

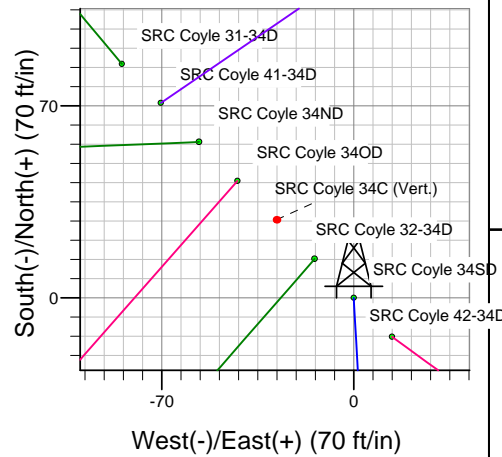
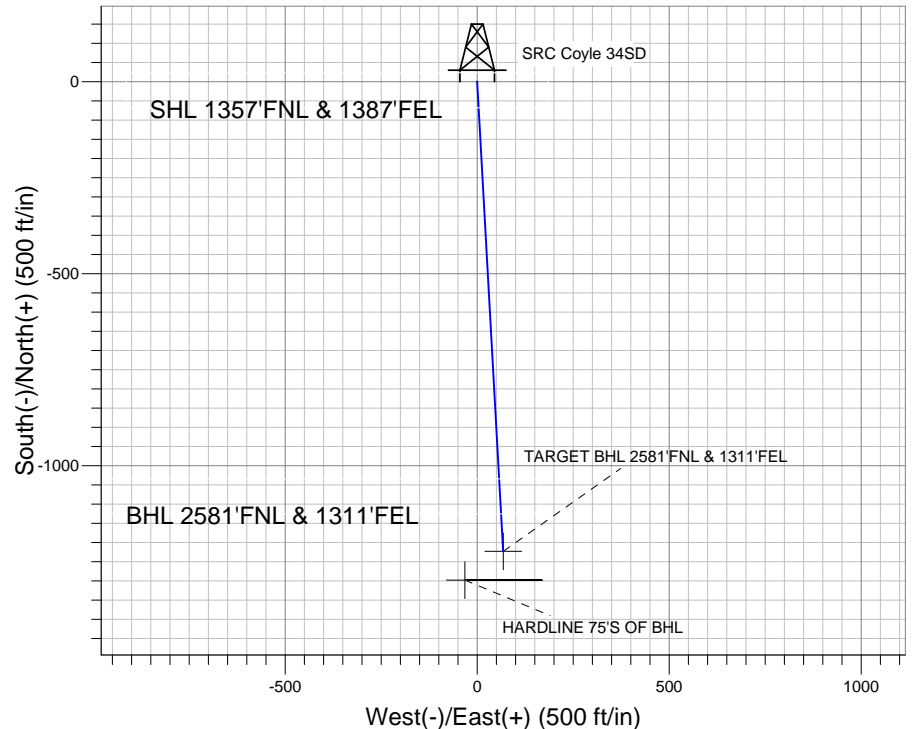
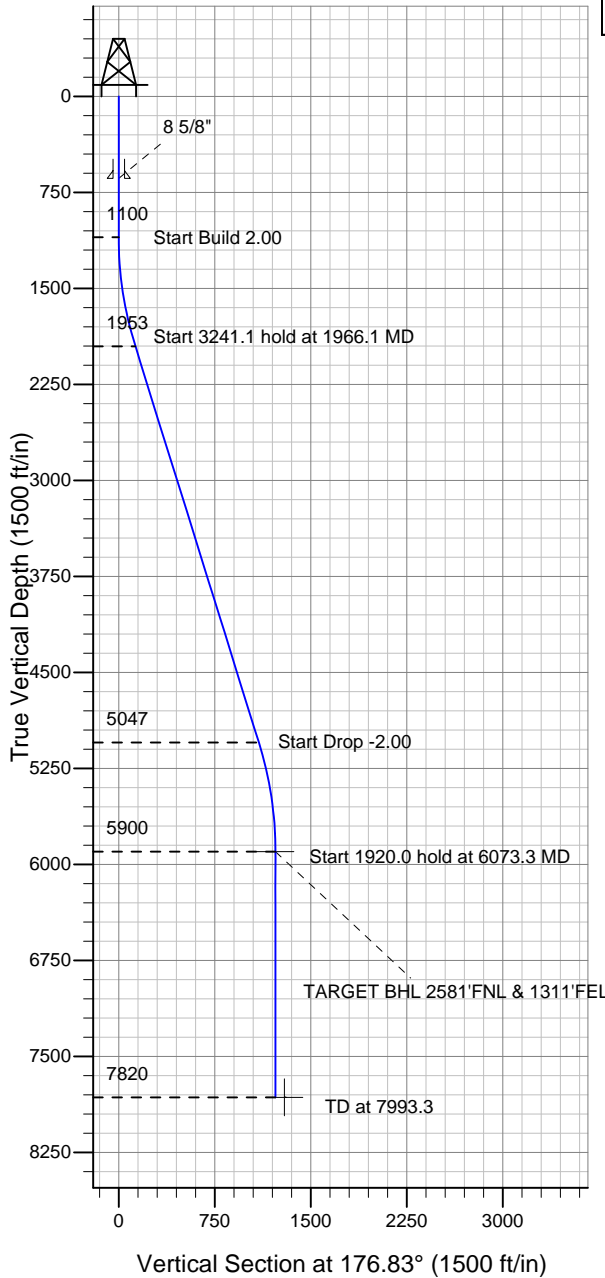
# ENSIGN

## Directional

### Well Name: SRC Coyle 34SD

Surface Location: SRC Coyle 31-34D Pad Sec.34-T4N-R68W  
 North American Datum 1983 US State Plane 1983 Colorado Northern Zone  
 Ground Elevation: 5112.0  
 +N/-S +E/-W Northing Easting Latitude Longitude Slot  
 0.0 0.0 1342886.37 3143769.19 40.273476 -104.984751  
 Original Well Elev WELL @ 5125.0ft (Original Well Elev)

### Synergy Resources



SRC Coyle 31-34D Pad Sec.34-T4N-R68W  
 SRC Coyle 34SD  
 Plan #1 (8-23-11)  
 8:40, August 25 2011



Azimuths to True North  
 Magnetic North: 8.94°

Magnetic Field  
 Strength: 53018.7snT  
 Dip Angle: 66.91°  
 Date: 8/23/2011  
 Model: IGRF2010

### WELLBORE TARGET DETAILS (LAT/LONG)

Name	TVD	+N/-S	+E/-W	Latitude	Longitude	Shape
TARGET BHL 2581'FNL & 1311'FEL	5900.0	-1223.0	67.8	40.270119	-104.984508	Point
HARDLINE 75'S OF BHL	7820.0	-1298.0	-32.2	40.269913	-104.984866	Polygon

### SECTION DETAILS

Sec	MD	Inc	Azi	TVD	+N/-S	+E/-W	DLeg	TFace	VSec	Target
1	0.0	0.00	0.00	0.0	0.0	0.0	0.00	0.00	0.0	
2	1100.0	0.00	0.00	1100.0	0.0	0.0	0.00	0.00	0.0	
3	1966.1	17.32	176.83	1952.9	-129.7	7.2	2.00	176.83	129.9	
4	5207.2	17.32	176.83	5047.1	-1093.2	60.6	0.00	0.00	1094.9	
5	6073.3	0.00	0.00	5900.0	-1223.0	67.8	2.00	180.00	1224.8	TARGET BHL 2581'FNL & 1311'FEL
6	7993.3	0.00	0.00	7820.0	-1223.0	67.8	0.00	0.00	1224.8	



## **Directional**

### **Synergy Resources**

**SEC.34-T4N-R68W**

**SRC Coyle 31-34D Pad Sec.34-T4N-R68W**

**SRC Coyle 34SD**

**Wellbore #1**

**Plan: Plan #1 (8-23-11)**

### **Standard Planning Report**

**25 August, 2011**

Plan Sections										
Measured Depth (ft)	Inclination (°)	Azimuth (°)	Vertical Depth (ft)	+N/-S (ft)	+E/-W (ft)	Dogleg Rate (°/100ft)	Build Rate (°/100ft)	Turn Rate (°/100ft)	TFO (°)	Target
0.0	0.00	0.00	0.0	0.0	0.0	0.00	0.00	0.00	0.00	
1,100.0	0.00	0.00	1,100.0	0.0	0.0	0.00	0.00	0.00	0.00	
1,966.1	17.32	176.83	1,952.9	-129.7	7.2	2.00	2.00	0.00	176.83	
5,207.2	17.32	176.83	5,047.1	-1,093.2	60.6	0.00	0.00	0.00	0.00	
6,073.3	0.00	0.00	5,900.0	-1,223.0	67.8	2.00	-2.00	0.00	180.00	TARGET BHL 2581
7,993.3	0.00	0.00	7,820.0	-1,223.0	67.8	0.00	0.00	0.00	0.00	

<b>Database:</b>	Landmark	<b>Local Co-ordinate Reference:</b>	Well SRC Coyle 34SD
<b>Company:</b>	Synergy Resources	<b>TVD Reference:</b>	WELL @ 5125.0ft (Original Well Elev)
<b>Project:</b>	SEC.34-T4N-R68W	<b>MD Reference:</b>	WELL @ 5125.0ft (Original Well Elev)
<b>Site:</b>	SRC Coyle 31-34D Pad Sec.34-T4N-R68W	<b>North Reference:</b>	True
<b>Well:</b>	SRC Coyle 34SD	<b>Survey Calculation Method:</b>	Minimum Curvature
<b>Wellbore:</b>	Wellbore #1		
<b>Design:</b>	Plan #1 (8-23-11)		

Planned Survey									
Measured Depth (ft)	Inclination (°)	Azimuth (°)	Vertical Depth (ft)	+N/-S (ft)	+E/-W (ft)	Vertical Section (ft)	Dogleg Rate (°/100ft)	Build Rate (°/100ft)	Turn Rate (°/100ft)
0.0	0.00	0.00	0.0	0.0	0.0	0.0	0.00	0.00	0.00
40.0	0.00	0.00	40.0	0.0	0.0	0.0	0.00	0.00	0.00
80.0	0.00	0.00	80.0	0.0	0.0	0.0	0.00	0.00	0.00
120.0	0.00	0.00	120.0	0.0	0.0	0.0	0.00	0.00	0.00
160.0	0.00	0.00	160.0	0.0	0.0	0.0	0.00	0.00	0.00
200.0	0.00	0.00	200.0	0.0	0.0	0.0	0.00	0.00	0.00
240.0	0.00	0.00	240.0	0.0	0.0	0.0	0.00	0.00	0.00
280.0	0.00	0.00	280.0	0.0	0.0	0.0	0.00	0.00	0.00
320.0	0.00	0.00	320.0	0.0	0.0	0.0	0.00	0.00	0.00
360.0	0.00	0.00	360.0	0.0	0.0	0.0	0.00	0.00	0.00
400.0	0.00	0.00	400.0	0.0	0.0	0.0	0.00	0.00	0.00
440.0	0.00	0.00	440.0	0.0	0.0	0.0	0.00	0.00	0.00
480.0	0.00	0.00	480.0	0.0	0.0	0.0	0.00	0.00	0.00
520.0	0.00	0.00	520.0	0.0	0.0	0.0	0.00	0.00	0.00
560.0	0.00	0.00	560.0	0.0	0.0	0.0	0.00	0.00	0.00
600.0	0.00	0.00	600.0	0.0	0.0	0.0	0.00	0.00	0.00
640.0	0.00	0.00	640.0	0.0	0.0	0.0	0.00	0.00	0.00
8 5/8"									
680.0	0.00	0.00	680.0	0.0	0.0	0.0	0.00	0.00	0.00
720.0	0.00	0.00	720.0	0.0	0.0	0.0	0.00	0.00	0.00
760.0	0.00	0.00	760.0	0.0	0.0	0.0	0.00	0.00	0.00
800.0	0.00	0.00	800.0	0.0	0.0	0.0	0.00	0.00	0.00
840.0	0.00	0.00	840.0	0.0	0.0	0.0	0.00	0.00	0.00
880.0	0.00	0.00	880.0	0.0	0.0	0.0	0.00	0.00	0.00
920.0	0.00	0.00	920.0	0.0	0.0	0.0	0.00	0.00	0.00
960.0	0.00	0.00	960.0	0.0	0.0	0.0	0.00	0.00	0.00
1,000.0	0.00	0.00	1,000.0	0.0	0.0	0.0	0.00	0.00	0.00
1,040.0	0.00	0.00	1,040.0	0.0	0.0	0.0	0.00	0.00	0.00
1,080.0	0.00	0.00	1,080.0	0.0	0.0	0.0	0.00	0.00	0.00
1,100.0	0.00	0.00	1,100.0	0.0	0.0	0.0	0.00	0.00	0.00
1,120.0	0.40	176.83	1,120.0	-0.1	0.0	0.1	2.00	2.00	0.00
1,160.0	1.20	176.83	1,160.0	-0.6	0.0	0.6	2.00	2.00	0.00
1,200.0	2.00	176.83	1,200.0	-1.7	0.1	1.7	2.00	2.00	0.00
1,240.0	2.80	176.83	1,239.9	-3.4	0.2	3.4	2.00	2.00	0.00
1,280.0	3.60	176.83	1,279.9	-5.6	0.3	5.7	2.00	2.00	0.00
1,320.0	4.40	176.83	1,319.8	-8.4	0.5	8.4	2.00	2.00	0.00
1,360.0	5.20	176.83	1,359.6	-11.8	0.7	11.8	2.00	2.00	0.00
1,400.0	6.00	176.83	1,399.5	-15.7	0.9	15.7	2.00	2.00	0.00
1,440.0	6.80	176.83	1,439.2	-20.1	1.1	20.2	2.00	2.00	0.00
1,480.0	7.60	176.83	1,478.9	-25.1	1.4	25.2	2.00	2.00	0.00
1,520.0	8.40	176.83	1,518.5	-30.7	1.7	30.7	2.00	2.00	0.00
1,560.0	9.20	176.83	1,558.0	-36.8	2.0	36.9	2.00	2.00	0.00
1,600.0	10.00	176.83	1,597.5	-43.5	2.4	43.5	2.00	2.00	0.00
1,640.0	10.80	176.83	1,636.8	-50.7	2.8	50.7	2.00	2.00	0.00
1,680.0	11.60	176.83	1,676.0	-58.4	3.2	58.5	2.00	2.00	0.00
1,720.0	12.40	176.83	1,715.2	-66.7	3.7	66.8	2.00	2.00	0.00
1,760.0	13.20	176.83	1,754.2	-75.6	4.2	75.7	2.00	2.00	0.00
1,800.0	14.00	176.83	1,793.1	-85.0	4.7	85.1	2.00	2.00	0.00
1,840.0	14.80	176.83	1,831.8	-94.9	5.3	95.0	2.00	2.00	0.00
1,880.0	15.60	176.83	1,870.4	-105.4	5.8	105.5	2.00	2.00	0.00
1,920.0	16.40	176.83	1,908.8	-116.4	6.5	116.6	2.00	2.00	0.00
1,960.0	17.20	176.83	1,947.1	-127.9	7.1	128.1	2.00	2.00	0.00
1,966.1	17.32	176.83	1,952.9	-129.7	7.2	129.9	2.00	2.00	0.00
2,000.0	17.32	176.83	1,985.3	-139.8	7.8	140.0	0.00	0.00	0.00

<b>Database:</b>	Landmark	<b>Local Co-ordinate Reference:</b>	Well SRC Coyle 34SD
<b>Company:</b>	Synergy Resources	<b>TVD Reference:</b>	WELL @ 5125.0ft (Original Well Elev)
<b>Project:</b>	SEC.34-T4N-R68W	<b>MD Reference:</b>	WELL @ 5125.0ft (Original Well Elev)
<b>Site:</b>	SRC Coyle 31-34D Pad Sec.34-T4N-R68W	<b>North Reference:</b>	True
<b>Well:</b>	SRC Coyle 34SD	<b>Survey Calculation Method:</b>	Minimum Curvature
<b>Wellbore:</b>	Wellbore #1		
<b>Design:</b>	Plan #1 (8-23-11)		

Planned Survey									
Measured Depth (ft)	Inclination (°)	Azimuth (°)	Vertical Depth (ft)	+N/-S (ft)	+E/-W (ft)	Vertical Section (ft)	Dogleg Rate (°/100ft)	Build Rate (°/100ft)	Turn Rate (°/100ft)
2,040.0	17.32	176.83	2,023.5	-151.7	8.4	151.9	0.00	0.00	0.00
2,080.0	17.32	176.83	2,061.7	-163.6	9.1	163.8	0.00	0.00	0.00
2,120.0	17.32	176.83	2,099.9	-175.5	9.7	175.7	0.00	0.00	0.00
2,160.0	17.32	176.83	2,138.1	-187.4	10.4	187.7	0.00	0.00	0.00
2,200.0	17.32	176.83	2,176.3	-199.3	11.0	199.6	0.00	0.00	0.00
2,240.0	17.32	176.83	2,214.4	-211.2	11.7	211.5	0.00	0.00	0.00
2,280.0	17.32	176.83	2,252.6	-223.0	12.4	223.4	0.00	0.00	0.00
2,320.0	17.32	176.83	2,290.8	-234.9	13.0	235.3	0.00	0.00	0.00
2,360.0	17.32	176.83	2,329.0	-246.8	13.7	247.2	0.00	0.00	0.00
2,400.0	17.32	176.83	2,367.2	-258.7	14.3	259.1	0.00	0.00	0.00
2,440.0	17.32	176.83	2,405.4	-270.6	15.0	271.0	0.00	0.00	0.00
2,480.0	17.32	176.83	2,443.6	-282.5	15.7	282.9	0.00	0.00	0.00
2,520.0	17.32	176.83	2,481.7	-294.4	16.3	294.8	0.00	0.00	0.00
2,560.0	17.32	176.83	2,519.9	-306.3	17.0	306.8	0.00	0.00	0.00
2,600.0	17.32	176.83	2,558.1	-318.2	17.6	318.7	0.00	0.00	0.00
2,640.0	17.32	176.83	2,596.3	-330.1	18.3	330.6	0.00	0.00	0.00
2,680.0	17.32	176.83	2,634.5	-342.0	19.0	342.5	0.00	0.00	0.00
2,720.0	17.32	176.83	2,672.7	-353.8	19.6	354.4	0.00	0.00	0.00
2,760.0	17.32	176.83	2,710.9	-365.7	20.3	366.3	0.00	0.00	0.00
2,800.0	17.32	176.83	2,749.0	-377.6	20.9	378.2	0.00	0.00	0.00
2,840.0	17.32	176.83	2,787.2	-389.5	21.6	390.1	0.00	0.00	0.00
2,880.0	17.32	176.83	2,825.4	-401.4	22.3	402.0	0.00	0.00	0.00
2,920.0	17.32	176.83	2,863.6	-413.3	22.9	413.9	0.00	0.00	0.00
2,960.0	17.32	176.83	2,901.8	-425.2	23.6	425.8	0.00	0.00	0.00
3,000.0	17.32	176.83	2,940.0	-437.1	24.2	437.8	0.00	0.00	0.00
3,040.0	17.32	176.83	2,978.2	-449.0	24.9	449.7	0.00	0.00	0.00
3,080.0	17.32	176.83	3,016.3	-460.9	25.6	461.6	0.00	0.00	0.00
3,120.0	17.32	176.83	3,054.5	-472.8	26.2	473.5	0.00	0.00	0.00
3,160.0	17.32	176.83	3,092.7	-484.6	26.9	485.4	0.00	0.00	0.00
3,200.0	17.32	176.83	3,130.9	-496.5	27.5	497.3	0.00	0.00	0.00
3,240.0	17.32	176.83	3,169.1	-508.4	28.2	509.2	0.00	0.00	0.00
3,280.0	17.32	176.83	3,207.3	-520.3	28.9	521.1	0.00	0.00	0.00
3,320.0	17.32	176.83	3,245.5	-532.2	29.5	533.0	0.00	0.00	0.00
3,360.0	17.32	176.83	3,283.7	-544.1	30.2	544.9	0.00	0.00	0.00
3,400.0	17.32	176.83	3,321.8	-556.0	30.8	556.8	0.00	0.00	0.00
3,440.0	17.32	176.83	3,360.0	-567.9	31.5	568.8	0.00	0.00	0.00
3,480.0	17.32	176.83	3,398.2	-579.8	32.1	580.7	0.00	0.00	0.00
3,520.0	17.32	176.83	3,436.4	-591.7	32.8	592.6	0.00	0.00	0.00
3,560.0	17.32	176.83	3,474.6	-603.6	33.5	604.5	0.00	0.00	0.00
3,600.0	17.32	176.83	3,512.8	-615.5	34.1	616.4	0.00	0.00	0.00
3,640.0	17.32	176.83	3,551.0	-627.3	34.8	628.3	0.00	0.00	0.00
3,680.0	17.32	176.83	3,589.1	-639.2	35.4	640.2	0.00	0.00	0.00
3,720.0	17.32	176.83	3,627.3	-651.1	36.1	652.1	0.00	0.00	0.00
3,760.0	17.32	176.83	3,665.5	-663.0	36.8	664.0	0.00	0.00	0.00
3,800.0	17.32	176.83	3,703.7	-674.9	37.4	675.9	0.00	0.00	0.00
3,840.0	17.32	176.83	3,741.9	-686.8	38.1	687.9	0.00	0.00	0.00
3,880.0	17.32	176.83	3,780.1	-698.7	38.7	699.8	0.00	0.00	0.00
3,920.0	17.32	176.83	3,818.3	-710.6	39.4	711.7	0.00	0.00	0.00
3,960.0	17.32	176.83	3,856.4	-722.5	40.1	723.6	0.00	0.00	0.00
4,000.0	17.32	176.83	3,894.6	-734.4	40.7	735.5	0.00	0.00	0.00
4,040.0	17.32	176.83	3,932.8	-746.3	41.4	747.4	0.00	0.00	0.00
4,080.0	17.32	176.83	3,971.0	-758.1	42.0	759.3	0.00	0.00	0.00
4,120.0	17.32	176.83	4,009.2	-770.0	42.7	771.2	0.00	0.00	0.00
4,160.0	17.32	176.83	4,047.4	-781.9	43.4	783.1	0.00	0.00	0.00

<b>Database:</b>	Landmark	<b>Local Co-ordinate Reference:</b>	Well SRC Coyle 34SD
<b>Company:</b>	Synergy Resources	<b>TVD Reference:</b>	WELL @ 5125.0ft (Original Well Elev)
<b>Project:</b>	SEC.34-T4N-R68W	<b>MD Reference:</b>	WELL @ 5125.0ft (Original Well Elev)
<b>Site:</b>	SRC Coyle 31-34D Pad Sec.34-T4N-R68W	<b>North Reference:</b>	True
<b>Well:</b>	SRC Coyle 34SD	<b>Survey Calculation Method:</b>	Minimum Curvature
<b>Wellbore:</b>	Wellbore #1		
<b>Design:</b>	Plan #1 (8-23-11)		

Planned Survey									
Measured Depth (ft)	Inclination (°)	Azimuth (°)	Vertical Depth (ft)	+N/-S (ft)	+E/-W (ft)	Vertical Section (ft)	Dogleg Rate (°/100ft)	Build Rate (°/100ft)	Turn Rate (°/100ft)
4,200.0	17.32	176.83	4,085.6	-793.8	44.0	795.0	0.00	0.00	0.00
4,240.0	17.32	176.83	4,123.7	-805.7	44.7	806.9	0.00	0.00	0.00
4,280.0	17.32	176.83	4,161.9	-817.6	45.3	818.9	0.00	0.00	0.00
4,320.0	17.32	176.83	4,200.1	-829.5	46.0	830.8	0.00	0.00	0.00
4,360.0	17.32	176.83	4,238.3	-841.4	46.7	842.7	0.00	0.00	0.00
4,400.0	17.32	176.83	4,276.5	-853.3	47.3	854.6	0.00	0.00	0.00
4,440.0	17.32	176.83	4,314.7	-865.2	48.0	866.5	0.00	0.00	0.00
4,480.0	17.32	176.83	4,352.9	-877.1	48.6	878.4	0.00	0.00	0.00
4,520.0	17.32	176.83	4,391.0	-888.9	49.3	890.3	0.00	0.00	0.00
4,560.0	17.32	176.83	4,429.2	-900.8	50.0	902.2	0.00	0.00	0.00
4,600.0	17.32	176.83	4,467.4	-912.7	50.6	914.1	0.00	0.00	0.00
4,640.0	17.32	176.83	4,505.6	-924.6	51.3	926.0	0.00	0.00	0.00
4,680.0	17.32	176.83	4,543.8	-936.5	51.9	938.0	0.00	0.00	0.00
4,720.0	17.32	176.83	4,582.0	-948.4	52.6	949.9	0.00	0.00	0.00
4,760.0	17.32	176.83	4,620.2	-960.3	53.2	961.8	0.00	0.00	0.00
4,800.0	17.32	176.83	4,658.3	-972.2	53.9	973.7	0.00	0.00	0.00
4,840.0	17.32	176.83	4,696.5	-984.1	54.6	985.6	0.00	0.00	0.00
4,880.0	17.32	176.83	4,734.7	-996.0	55.2	997.5	0.00	0.00	0.00
4,920.0	17.32	176.83	4,772.9	-1,007.9	55.9	1,009.4	0.00	0.00	0.00
4,960.0	17.32	176.83	4,811.1	-1,019.8	56.5	1,021.3	0.00	0.00	0.00
5,000.0	17.32	176.83	4,849.3	-1,031.6	57.2	1,033.2	0.00	0.00	0.00
5,040.0	17.32	176.83	4,887.5	-1,043.5	57.9	1,045.1	0.00	0.00	0.00
5,080.0	17.32	176.83	4,925.6	-1,055.4	58.5	1,057.0	0.00	0.00	0.00
5,120.0	17.32	176.83	4,963.8	-1,067.3	59.2	1,069.0	0.00	0.00	0.00
5,160.0	17.32	176.83	5,002.0	-1,079.2	59.8	1,080.9	0.00	0.00	0.00
5,200.0	17.32	176.83	5,040.2	-1,091.1	60.5	1,092.8	0.00	0.00	0.00
5,207.2	17.32	176.83	5,047.1	-1,093.2	60.6	1,094.9	0.00	0.00	0.00
5,240.0	16.67	176.83	5,078.4	-1,102.8	61.1	1,104.5	2.00	-2.00	0.00
5,280.0	15.87	176.83	5,116.8	-1,114.0	61.8	1,115.7	2.00	-2.00	0.00
5,320.0	15.07	176.83	5,155.4	-1,124.6	62.4	1,126.4	2.00	-2.00	0.00
5,360.0	14.27	176.83	5,194.1	-1,134.8	62.9	1,136.5	2.00	-2.00	0.00
5,400.0	13.47	176.83	5,232.9	-1,144.3	63.5	1,146.1	2.00	-2.00	0.00
5,440.0	12.67	176.83	5,271.9	-1,153.4	64.0	1,155.1	2.00	-2.00	0.00
5,480.0	11.87	176.83	5,311.0	-1,161.8	64.4	1,163.6	2.00	-2.00	0.00
5,520.0	11.07	176.83	5,350.2	-1,169.8	64.9	1,171.6	2.00	-2.00	0.00
5,560.0	10.27	176.83	5,389.5	-1,177.2	65.3	1,179.0	2.00	-2.00	0.00
5,600.0	9.47	176.83	5,428.9	-1,184.0	65.7	1,185.8	2.00	-2.00	0.00
5,640.0	8.67	176.83	5,468.4	-1,190.3	66.0	1,192.1	2.00	-2.00	0.00
5,680.0	7.87	176.83	5,508.0	-1,196.0	66.3	1,197.9	2.00	-2.00	0.00
5,720.0	7.07	176.83	5,547.6	-1,201.2	66.6	1,203.1	2.00	-2.00	0.00
5,760.0	6.27	176.83	5,587.4	-1,205.9	66.9	1,207.7	2.00	-2.00	0.00
5,800.0	5.47	176.83	5,627.2	-1,209.9	67.1	1,211.8	2.00	-2.00	0.00
5,840.0	4.67	176.83	5,667.0	-1,213.5	67.3	1,215.3	2.00	-2.00	0.00
5,880.0	3.87	176.83	5,706.9	-1,216.4	67.4	1,218.3	2.00	-2.00	0.00
5,920.0	3.07	176.83	5,746.8	-1,218.9	67.6	1,220.7	2.00	-2.00	0.00
5,960.0	2.27	176.83	5,786.8	-1,220.7	67.7	1,222.6	2.00	-2.00	0.00
6,000.0	1.47	176.83	5,826.8	-1,222.0	67.8	1,223.9	2.00	-2.00	0.00
6,040.0	0.67	176.83	5,866.7	-1,222.8	67.8	1,224.6	2.00	-2.00	0.00
6,073.3	0.00	0.00	5,900.0	-1,223.0	67.8	1,224.8	2.00	-2.00	0.00
TARGET BHL 2581'FNL & 1311'FEL									
6,080.0	0.00	0.00	5,906.7	-1,223.0	67.8	1,224.8	0.00	0.00	0.00
6,120.0	0.00	0.00	5,946.7	-1,223.0	67.8	1,224.8	0.00	0.00	0.00
6,160.0	0.00	0.00	5,986.7	-1,223.0	67.8	1,224.8	0.00	0.00	0.00
6,200.0	0.00	0.00	6,026.7	-1,223.0	67.8	1,224.8	0.00	0.00	0.00

<b>Database:</b>	Landmark	<b>Local Co-ordinate Reference:</b>	Well SRC Coyle 34SD
<b>Company:</b>	Synergy Resources	<b>TVD Reference:</b>	WELL @ 5125.0ft (Original Well Elev)
<b>Project:</b>	SEC.34-T4N-R68W	<b>MD Reference:</b>	WELL @ 5125.0ft (Original Well Elev)
<b>Site:</b>	SRC Coyle 31-34D Pad Sec.34-T4N-R68W	<b>North Reference:</b>	True
<b>Well:</b>	SRC Coyle 34SD	<b>Survey Calculation Method:</b>	Minimum Curvature
<b>Wellbore:</b>	Wellbore #1		
<b>Design:</b>	Plan #1 (8-23-11)		

Planned Survey									
Measured Depth (ft)	Inclination (°)	Azimuth (°)	Vertical Depth (ft)	+N/-S (ft)	+E/-W (ft)	Vertical Section (ft)	Dogleg Rate (°/100ft)	Build Rate (°/100ft)	Turn Rate (°/100ft)
6,240.0	0.00	0.00	6,066.7	-1,223.0	67.8	1,224.8	0.00	0.00	0.00
6,280.0	0.00	0.00	6,106.7	-1,223.0	67.8	1,224.8	0.00	0.00	0.00
6,320.0	0.00	0.00	6,146.7	-1,223.0	67.8	1,224.8	0.00	0.00	0.00
6,360.0	0.00	0.00	6,186.7	-1,223.0	67.8	1,224.8	0.00	0.00	0.00
6,400.0	0.00	0.00	6,226.7	-1,223.0	67.8	1,224.8	0.00	0.00	0.00
6,440.0	0.00	0.00	6,266.7	-1,223.0	67.8	1,224.8	0.00	0.00	0.00
6,480.0	0.00	0.00	6,306.7	-1,223.0	67.8	1,224.8	0.00	0.00	0.00
6,520.0	0.00	0.00	6,346.7	-1,223.0	67.8	1,224.8	0.00	0.00	0.00
6,560.0	0.00	0.00	6,386.7	-1,223.0	67.8	1,224.8	0.00	0.00	0.00
6,600.0	0.00	0.00	6,426.7	-1,223.0	67.8	1,224.8	0.00	0.00	0.00
6,640.0	0.00	0.00	6,466.7	-1,223.0	67.8	1,224.8	0.00	0.00	0.00
6,680.0	0.00	0.00	6,506.7	-1,223.0	67.8	1,224.8	0.00	0.00	0.00
6,720.0	0.00	0.00	6,546.7	-1,223.0	67.8	1,224.8	0.00	0.00	0.00
6,760.0	0.00	0.00	6,586.7	-1,223.0	67.8	1,224.8	0.00	0.00	0.00
6,800.0	0.00	0.00	6,626.7	-1,223.0	67.8	1,224.8	0.00	0.00	0.00
6,840.0	0.00	0.00	6,666.7	-1,223.0	67.8	1,224.8	0.00	0.00	0.00
6,880.0	0.00	0.00	6,706.7	-1,223.0	67.8	1,224.8	0.00	0.00	0.00
6,920.0	0.00	0.00	6,746.7	-1,223.0	67.8	1,224.8	0.00	0.00	0.00
6,960.0	0.00	0.00	6,786.7	-1,223.0	67.8	1,224.8	0.00	0.00	0.00
7,000.0	0.00	0.00	6,826.7	-1,223.0	67.8	1,224.8	0.00	0.00	0.00
7,040.0	0.00	0.00	6,866.7	-1,223.0	67.8	1,224.8	0.00	0.00	0.00
7,080.0	0.00	0.00	6,906.7	-1,223.0	67.8	1,224.8	0.00	0.00	0.00
7,120.0	0.00	0.00	6,946.7	-1,223.0	67.8	1,224.8	0.00	0.00	0.00
7,160.0	0.00	0.00	6,986.7	-1,223.0	67.8	1,224.8	0.00	0.00	0.00
7,200.0	0.00	0.00	7,026.7	-1,223.0	67.8	1,224.8	0.00	0.00	0.00
7,240.0	0.00	0.00	7,066.7	-1,223.0	67.8	1,224.8	0.00	0.00	0.00
7,280.0	0.00	0.00	7,106.7	-1,223.0	67.8	1,224.8	0.00	0.00	0.00
7,320.0	0.00	0.00	7,146.7	-1,223.0	67.8	1,224.8	0.00	0.00	0.00
7,360.0	0.00	0.00	7,186.7	-1,223.0	67.8	1,224.8	0.00	0.00	0.00
7,400.0	0.00	0.00	7,226.7	-1,223.0	67.8	1,224.8	0.00	0.00	0.00
7,440.0	0.00	0.00	7,266.7	-1,223.0	67.8	1,224.8	0.00	0.00	0.00
7,480.0	0.00	0.00	7,306.7	-1,223.0	67.8	1,224.8	0.00	0.00	0.00
7,520.0	0.00	0.00	7,346.7	-1,223.0	67.8	1,224.8	0.00	0.00	0.00
7,560.0	0.00	0.00	7,386.7	-1,223.0	67.8	1,224.8	0.00	0.00	0.00
7,600.0	0.00	0.00	7,426.7	-1,223.0	67.8	1,224.8	0.00	0.00	0.00
7,640.0	0.00	0.00	7,466.7	-1,223.0	67.8	1,224.8	0.00	0.00	0.00
7,680.0	0.00	0.00	7,506.7	-1,223.0	67.8	1,224.8	0.00	0.00	0.00
7,720.0	0.00	0.00	7,546.7	-1,223.0	67.8	1,224.8	0.00	0.00	0.00
7,760.0	0.00	0.00	7,586.7	-1,223.0	67.8	1,224.8	0.00	0.00	0.00
7,800.0	0.00	0.00	7,626.7	-1,223.0	67.8	1,224.8	0.00	0.00	0.00
7,840.0	0.00	0.00	7,666.7	-1,223.0	67.8	1,224.8	0.00	0.00	0.00
7,880.0	0.00	0.00	7,706.7	-1,223.0	67.8	1,224.8	0.00	0.00	0.00
7,920.0	0.00	0.00	7,746.7	-1,223.0	67.8	1,224.8	0.00	0.00	0.00
7,960.0	0.00	0.00	7,786.7	-1,223.0	67.8	1,224.8	0.00	0.00	0.00
7,993.3	0.00	0.00	7,820.0	-1,223.0	67.8	1,224.8	0.00	0.00	0.00
J-SAND - HARDLINE 75'S OF BHL									

<b>Database:</b>	Landmark	<b>Local Co-ordinate Reference:</b>	Well SRC Coyle 34SD
<b>Company:</b>	Synergy Resources	<b>TVD Reference:</b>	WELL @ 5125.0ft (Original Well Elev)
<b>Project:</b>	SEC.34-T4N-R68W	<b>MD Reference:</b>	WELL @ 5125.0ft (Original Well Elev)
<b>Site:</b>	SRC Coyle 31-34D Pad Sec.34-T4N-R68W	<b>North Reference:</b>	True
<b>Well:</b>	SRC Coyle 34SD	<b>Survey Calculation Method:</b>	Minimum Curvature
<b>Wellbore:</b>	Wellbore #1		
<b>Design:</b>	Plan #1 (8-23-11)		

Targets									
Target Name									
- hit/miss target	Dip Angle (°)	Dip Dir. (°)	TVD (ft)	+N/-S (ft)	+E/-W (ft)	Northing (ft)	Easting (ft)	Latitude	Longitude
- Shape									
HARDLINE 75'S OF E	0.00	0.00	7,820.0	-1,298.0	-32.2	1,341,588.27	3,143,744.54	40.269913	-104.984866
- plan misses target center by 125.0ft at 7993.3ft MD (7820.0 TVD, -1223.0 N, 67.8 E)									
- Polygon									
Point 1			7,820.0	0.0	0.0	1,341,588.27	3,143,744.54		
Point 2			7,820.0	0.0	200.0	1,341,589.43	3,143,944.52		
Point 3			7,820.0	0.0	0.0	1,341,588.27	3,143,744.54		
TARGET BHL 2581'F	0.00	0.00	5,900.0	-1,223.0	67.8	1,341,663.88	3,143,844.10	40.270119	-104.984508
- plan hits target center									
- Point									

Casing Points					
Measured Depth (ft)	Vertical Depth (ft)	Name	Casing Diameter (")	Hole Diameter (")	
640.0	640.0	8 5/8"	8-5/8	12-1/4	

Formations					
Measured Depth (ft)	Vertical Depth (ft)	Name	Lithology	Dip (°)	Dip Direction (°)
7,993.3	7,820.0	J-SAND		0.00	





# **Directional**

## **Synergy Resources**

**SEC.34-T4N-R68W**

**SRC Coyle 31-34D Pad Sec.34-T4N-R68W**

**SRC Coyle 34SD**

**Wellbore #1**

**Plan #1 (8-23-11)**

## **Anticollision Report**

**25 August, 2011**



<b>Company:</b>	Synergy Resources	<b>Local Co-ordinate Reference:</b>	Well SRC Coyle 34SD
<b>Project:</b>	SEC.34-T4N-R68W	<b>TVD Reference:</b>	WELL @ 5125.0ft (Original Well Elev)
<b>Reference Site:</b>	SRC Coyle 31-34D Pad Sec.34-T4N-R68W	<b>MD Reference:</b>	WELL @ 5125.0ft (Original Well Elev)
<b>Site Error:</b>	0.0ft	<b>North Reference:</b>	True
<b>Reference Well:</b>	SRC Coyle 34SD	<b>Survey Calculation Method:</b>	Minimum Curvature
<b>Well Error:</b>	0.0ft	<b>Output errors are at</b>	2.00 sigma
<b>Reference Wellbore</b>	Wellbore #1	<b>Database:</b>	Landmark
<b>Reference Design:</b>	Plan #1 (8-23-11)	<b>Offset TVD Reference:</b>	Offset Datum

Offset Design SRC Coyle 31-34D Pad Sec.34-T4N-R68W - SRC Coyle 32-34D - Wellbore #1 - Plan #1 (8-23-11)												Offset Site Error:	0.0ft
Survey Program: 0-MWD												Offset Well Error:	0.0ft
Reference		Offset		Semi Major Axis			Distance						
Measured Depth (ft)	Vertical Depth (ft)	Measured Depth (ft)	Vertical Depth (ft)	Reference (ft)	Offset (ft)	Highside Toolface (°)	Offset Wellbore Centre +N/-S (ft)	+E/-W (ft)	Between Centres (ft)	Between Ellipses (ft)	Minimum Separation (ft)	Separation Factor	Warning
1,966.1	1,952.9	1,946.5	1,925.3	4.7	5.6	86.86	-138.9	-147.7	157.4	147.8	9.61	16.386	
2,000.0	1,985.3	1,979.7	1,957.6	4.8	5.8	88.46	-144.9	-152.9	162.9	153.0	9.93	16.408	
2,100.0	2,080.8	2,077.5	2,052.6	5.3	6.3	92.61	-162.4	-168.1	179.8	168.9	10.90	16.494	
2,200.0	2,176.3	2,175.3	2,147.6	5.8	6.7	96.04	-180.0	-183.4	197.4	185.5	11.89	16.602	
2,300.0	2,271.7	2,273.1	2,242.5	6.4	7.2	98.91	-197.5	-198.7	215.6	202.7	12.89	16.722	
2,400.0	2,367.2	2,370.9	2,337.5	6.9	7.7	101.33	-215.0	-214.0	234.2	220.3	13.90	16.849	
2,500.0	2,462.7	2,468.7	2,432.5	7.5	8.2	103.40	-232.5	-229.2	253.2	238.3	14.91	16.978	
2,600.0	2,558.1	2,566.5	2,527.5	8.0	8.7	105.17	-250.1	-244.5	272.5	256.5	15.93	17.105	
2,700.0	2,653.6	2,664.3	2,622.5	8.6	9.2	106.71	-267.6	-259.8	292.0	275.0	16.95	17.229	
2,800.0	2,749.0	2,762.1	2,717.5	9.2	9.6	108.06	-285.1	-275.1	311.6	293.7	17.96	17.348	
2,900.0	2,844.5	2,859.9	2,812.5	9.8	10.1	109.25	-302.7	-290.3	331.4	312.5	18.98	17.463	
3,000.0	2,940.0	2,957.7	2,907.5	10.3	10.6	110.31	-320.2	-305.6	351.4	331.4	20.00	17.571	
3,100.0	3,035.4	3,055.5	3,002.5	10.9	11.1	111.25	-337.7	-320.9	371.4	350.4	21.01	17.674	
3,200.0	3,130.9	3,153.3	3,097.5	11.5	11.6	112.09	-355.3	-336.2	391.5	369.5	22.03	17.772	
3,300.0	3,226.4	3,251.1	3,192.5	12.1	12.1	112.86	-372.8	-351.5	411.7	388.7	23.05	17.864	
3,400.0	3,321.8	3,348.9	3,287.5	12.7	12.6	113.55	-390.3	-366.7	432.0	407.9	24.06	17.952	
3,500.0	3,417.3	3,446.7	3,382.5	13.3	13.1	114.18	-407.9	-382.0	452.3	427.2	25.08	18.034	
3,600.0	3,512.8	3,544.5	3,477.5	13.9	13.6	114.75	-425.4	-397.3	472.7	446.6	26.10	18.112	
3,700.0	3,608.2	3,642.3	3,572.5	14.5	14.1	115.28	-442.9	-412.6	493.1	466.0	27.11	18.186	
3,800.0	3,703.7	3,740.1	3,667.5	15.1	14.6	115.77	-460.5	-427.8	513.5	485.4	28.13	18.256	
3,900.0	3,799.2	3,837.9	3,762.4	15.7	15.1	116.22	-478.0	-443.1	534.0	504.8	29.14	18.323	
4,000.0	3,894.6	3,935.7	3,857.4	16.3	15.6	116.63	-495.5	-458.4	554.5	524.3	30.16	18.386	
4,100.0	3,990.1	4,033.5	3,952.4	16.9	16.1	117.02	-513.1	-473.7	575.0	543.9	31.17	18.445	
4,200.0	4,085.6	4,131.3	4,047.4	17.5	16.6	117.38	-530.6	-488.9	595.6	563.4	32.19	18.502	
4,300.0	4,181.0	4,229.1	4,142.4	18.1	17.1	117.71	-548.1	-504.2	616.2	583.0	33.20	18.556	
4,400.0	4,276.5	4,326.9	4,237.4	18.7	17.6	118.03	-565.6	-519.5	636.7	602.5	34.22	18.608	
4,500.0	4,372.0	4,425.5	4,333.2	19.3	18.1	118.33	-583.3	-534.9	657.4	622.1	35.23	18.661	
4,600.0	4,467.4	4,529.2	4,434.5	19.9	18.5	118.82	-600.1	-549.5	677.4	641.3	36.14	18.746	
4,700.0	4,562.9	4,632.7	4,536.3	20.5	18.8	119.59	-614.1	-561.7	696.7	659.8	36.94	18.863	
4,800.0	4,658.3	4,735.8	4,638.3	21.1	19.1	120.60	-625.3	-571.5	715.4	677.7	37.67	18.991	
4,900.0	4,753.8	4,838.2	4,740.1	21.7	19.3	121.84	-633.7	-578.8	733.6	695.3	38.33	19.139	
5,000.0	4,849.3	4,939.7	4,841.3	22.3	19.5	123.28	-639.3	-583.7	751.5	712.6	38.91	19.314	
5,100.0	4,944.7	5,040.0	4,941.5	23.0	19.6	124.90	-642.2	-586.2	769.3	729.9	39.40	19.523	
5,207.2	5,047.1	5,144.5	5,046.1	23.6	19.8	126.74	-642.6	-586.6	788.6	748.7	39.85	19.787	
5,300.0	5,136.1	5,233.5	5,135.1	24.1	19.8	128.46	-642.6	-586.6	805.0	764.8	40.18	20.033	
5,400.0	5,232.9	5,330.4	5,231.9	24.4	19.9	130.05	-642.6	-586.6	821.1	780.7	40.46	20.297	
5,500.0	5,330.6	5,428.0	5,329.6	24.8	20.1	131.38	-642.6	-586.6	835.4	794.7	40.71	20.520	
5,600.0	5,428.9	5,526.3	5,427.9	25.1	20.2	132.48	-642.6	-586.6	847.6	806.7	40.96	20.697	
5,700.0	5,527.8	5,625.2	5,526.8	25.4	20.3	133.35	-642.6	-586.6	857.7	816.5	41.19	20.825	
5,800.0	5,627.2	5,724.6	5,626.2	25.6	20.4	134.00	-642.6	-586.6	865.5	824.1	41.41	20.901	
5,900.0	5,726.9	5,824.3	5,725.9	25.8	20.5	134.45	-642.6	-586.6	871.0	829.3	41.62	20.925	
6,000.0	5,826.8	5,924.2	5,825.8	25.9	20.6	134.69	-642.6	-586.6	874.0	832.2	41.83	20.896	
6,073.3	5,900.0	5,997.4	5,899.0	26.0	20.7	-48.43	-642.6	-586.6	874.6	832.7	41.98	20.836	
6,100.0	5,926.7	6,024.2	5,925.7	26.0	20.7	-48.43	-642.6	-586.6	874.6	832.6	42.04	20.805	
6,200.0	6,026.7	6,124.2	6,025.7	26.1	20.9	-48.43	-642.6	-586.6	874.6	832.4	42.27	20.691	
6,300.0	6,126.7	6,224.2	6,125.7	26.2	21.0	-48.43	-642.6	-586.6	874.6	832.1	42.51	20.577	
6,400.0	6,226.7	6,324.2	6,225.7	26.3	21.1	-48.43	-642.6	-586.6	874.6	831.9	42.74	20.463	
6,500.0	6,326.7	6,424.2	6,325.7	26.4	21.2	-48.43	-642.6	-586.6	874.6	831.7	42.98	20.348	
6,600.0	6,426.7	6,524.2	6,425.7	26.5	21.4	-48.43	-642.6	-586.6	874.6	831.4	43.23	20.233	
6,700.0	6,526.7	6,624.2	6,525.7	26.6	21.5	-48.43	-642.6	-586.6	874.6	831.2	43.48	20.117	
6,800.0	6,626.7	6,724.2	6,625.7	26.7	21.6	-48.43	-642.6	-586.6	874.6	830.9	43.73	20.002	
6,900.0	6,726.7	6,824.2	6,725.7	26.8	21.8	-48.43	-642.6	-586.6	874.6	830.7	43.98	19.886	

CC - Min centre to center distance or convergent point, SF - min separation factor, ES - min ellipse separation

<b>Company:</b>	Synergy Resources	<b>Local Co-ordinate Reference:</b>	Well SRC Coyle 34SD
<b>Project:</b>	SEC.34-T4N-R68W	<b>TVD Reference:</b>	WELL @ 5125.0ft (Original Well Elev)
<b>Reference Site:</b>	SRC Coyle 31-34D Pad Sec.34-T4N-R68W	<b>MD Reference:</b>	WELL @ 5125.0ft (Original Well Elev)
<b>Site Error:</b>	0.0ft	<b>North Reference:</b>	True
<b>Reference Well:</b>	SRC Coyle 34SD	<b>Survey Calculation Method:</b>	Minimum Curvature
<b>Well Error:</b>	0.0ft	<b>Output errors are at</b>	2.00 sigma
<b>Reference Wellbore</b>	Wellbore #1	<b>Database:</b>	Landmark
<b>Reference Design:</b>	Plan #1 (8-23-11)	<b>Offset TVD Reference:</b>	Offset Datum

<b>Offset Design</b>												<b>Offset Site Error:</b>	0.0 ft
SRC Coyle 31-34D Pad Sec.34-T4N-R68W - SRC Coyle 32-34D - Wellbore #1 - Plan #1 (8-23-11)												<b>Offset Well Error:</b>	0.0 ft
Survey Program: 0-MWD													
Reference		Offset		Semi Major Axis			Distance						
Measured Depth (ft)	Vertical Depth (ft)	Measured Depth (ft)	Vertical Depth (ft)	Reference (ft)	Offset (ft)	Highside Toolface (°)	Offset Wellbore Centre +N/-S (ft)	+E/-W (ft)	Between Centres (ft)	Between Ellipses (ft)	Minimum Separation (ft)	Separation Factor	Warning
7,000.0	6,826.7	6,924.2	6,825.7	26.9	21.9	-48.43	-642.6	-586.6	874.6	830.4	44.24	19.771	
7,100.0	6,926.7	7,024.2	6,925.7	27.0	22.0	-48.43	-642.6	-586.6	874.6	830.1	44.50	19.655	
7,200.0	7,026.7	7,124.2	7,025.7	27.1	22.2	-48.43	-642.6	-586.6	874.6	829.9	44.76	19.539	
7,300.0	7,126.7	7,224.2	7,125.7	27.2	22.3	-48.43	-642.6	-586.6	874.6	829.6	45.03	19.424	
7,400.0	7,226.7	7,324.2	7,225.7	27.3	22.4	-48.43	-642.6	-586.6	874.6	829.3	45.30	19.309	
7,500.0	7,326.7	7,424.2	7,325.7	27.4	22.6	-48.43	-642.6	-586.6	874.6	829.1	45.57	19.193	
7,600.0	7,426.7	7,524.2	7,425.7	27.5	22.7	-48.43	-642.6	-586.6	874.6	828.8	45.84	19.078	
7,700.0	7,526.7	7,624.2	7,525.7	27.6	22.9	-48.43	-642.6	-586.6	874.6	828.5	46.12	18.964	
7,800.0	7,626.7	7,724.2	7,625.7	27.7	23.0	-48.43	-642.6	-586.6	874.6	828.2	46.40	18.849	
7,900.0	7,726.7	7,824.2	7,725.7	27.9	23.2	-48.43	-642.6	-586.6	874.6	828.0	46.69	18.735	
7,993.3	7,820.0	7,917.4	7,819.0	28.0	23.3	-48.43	-642.6	-586.6	874.6	827.7	46.95	18.629	

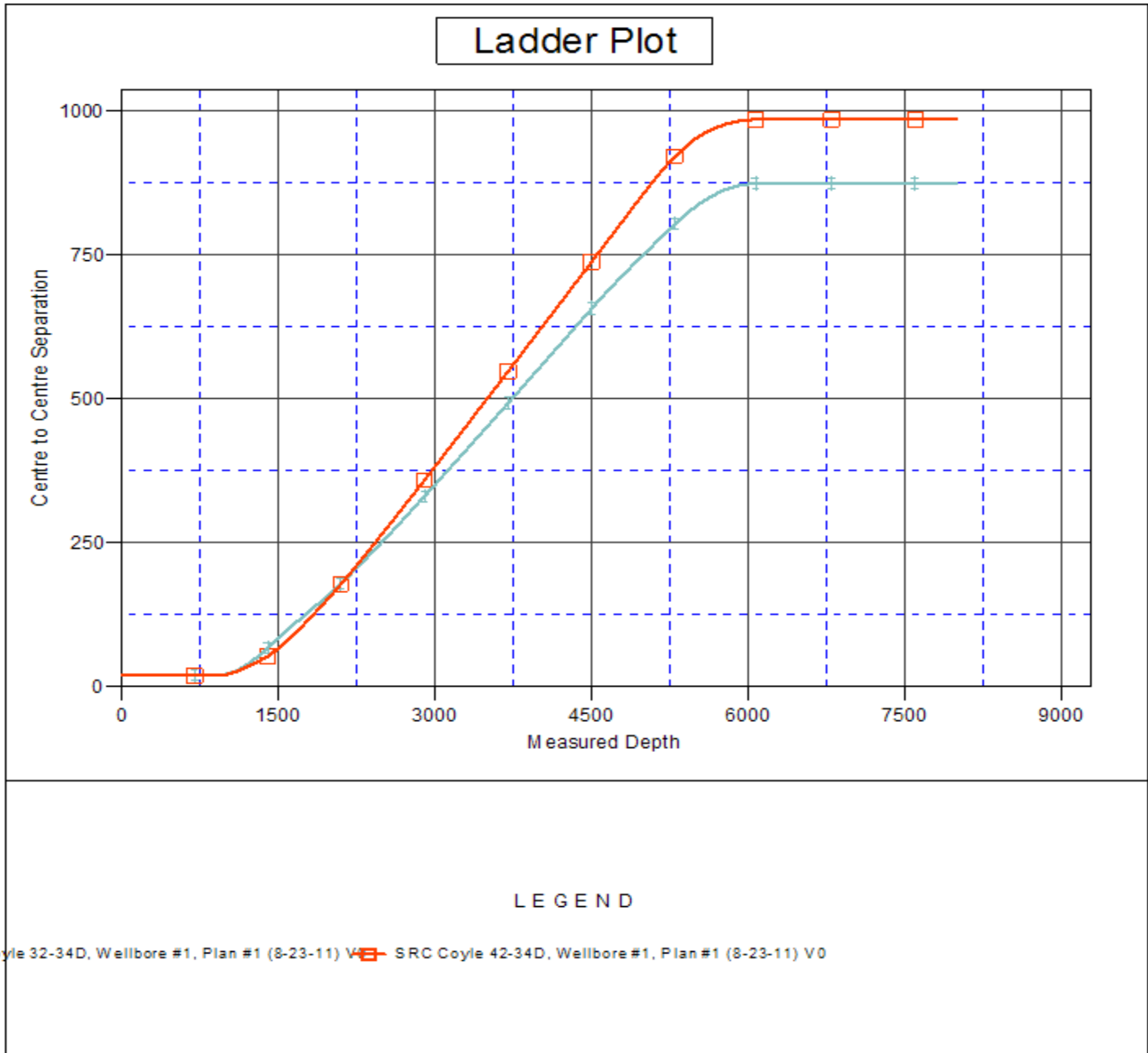
SRC Coyle 31-34D Pad Sec.34-T4N-R68W - SRC Coyle 42-34D - Wellbore #1 - Plan #1 (8-23-11)													Offset Site Error:	0.0 ft
Survey Program: 0-MWD													Offset Well Error:	0.0 ft
Reference		Offset		Semi Major Axis			Distance							
Measured Depth (ft)	Vertical Depth (ft)	Measured Depth (ft)	Vertical Depth (ft)	Reference (ft)	Offset (ft)	Highside Toolface (°)	Offset Wellbore Centre +N/-S (ft)	+E/-W (ft)	Between Centres (ft)	Between Ellipses (ft)	Minimum Separation (ft)	Separation Factor	Warning	
0.0	0.0	1.0	1.0	0.0	0.0	135.54	-14.2	14.0	19.9	19.9	0.00	N/A		
100.0	100.0	101.0	101.0	0.1	0.1	135.54	-14.2	14.0	19.9	19.7	0.23	87.743		
200.0	200.0	201.0	201.0	0.3	0.3	135.54	-14.2	14.0	19.9	19.2	0.68	29.442		
300.0	300.0	301.0	301.0	0.6	0.6	135.54	-14.2	14.0	19.9	18.8	1.13	17.689		
400.0	400.0	401.0	401.0	0.8	0.8	135.54	-14.2	14.0	19.9	18.3	1.58	12.642		
500.0	500.0	501.0	501.0	1.0	1.0	135.54	-14.2	14.0	19.9	17.9	2.03	9.836		
600.0	600.0	601.0	601.0	1.2	1.2	135.54	-14.2	14.0	19.9	17.4	2.47	8.049		
700.0	700.0	701.0	701.0	1.5	1.5	135.54	-14.2	14.0	19.9	17.0	2.92	6.812		
800.0	800.0	801.0	801.0	1.7	1.7	135.54	-14.2	14.0	19.9	16.5	3.37	5.904		
866.3	866.3	867.3	867.3	1.8	1.8	135.54	-14.2	14.0	19.9	16.2	3.67	5.425 CC		
900.0	900.0	901.0	901.0	1.9	1.9	135.54	-14.2	14.0	19.9	16.1	3.82	5.210 ES		
1,000.0	1,000.0	1,000.0	1,000.0	2.1	2.1	134.78	-15.2	15.4	21.7	17.4	4.25	5.099 SF		
1,100.0	1,100.0	1,099.3	1,099.1	2.4	2.3	133.10	-18.3	19.6	26.8	22.2	4.66	5.757		
1,200.0	1,200.0	1,198.0	1,197.4	2.6	2.5	-47.38	-23.3	26.5	34.3	29.2	5.05	6.784		
1,300.0	1,299.8	1,296.2	1,294.9	2.7	2.7	-53.24	-30.3	36.1	43.0	37.6	5.42	7.940		
1,400.0	1,399.5	1,393.8	1,391.4	2.9	3.0	-59.66	-39.2	48.3	53.7	47.9	5.81	9.236		
1,500.0	1,498.7	1,490.8	1,486.6	3.1	3.3	-65.78	-50.0	63.0	66.6	60.4	6.25	10.668		
1,600.0	1,597.5	1,586.9	1,580.4	3.4	3.7	-71.20	-62.5	80.2	82.1	75.4	6.74	12.189		
1,700.0	1,695.6	1,683.0	1,673.4	3.7	4.1	-75.90	-76.8	99.8	100.1	92.8	7.31	13.704		
1,800.0	1,793.1	1,780.8	1,767.8	4.0	4.5	-80.56	-91.7	120.4	118.8	110.8	7.97	14.899		
1,900.0	1,889.6	1,878.3	1,861.9	4.4	5.0	-85.28	-106.7	140.9	137.8	129.1	8.75	15.758		
1,966.1	1,952.9	1,942.6	1,924.0	4.7	5.3	-88.39	-116.5	154.4	150.8	141.5	9.32	16.187		
2,000.0	1,985.3	1,975.5	1,955.7	4.8	5.5	-90.05	-121.6	161.3	157.7	148.0	9.63	16.378		
2,100.0	2,080.8	2,072.6	2,049.5	5.3	5.9	-94.20	-136.5	181.8	178.5	167.9	10.56	16.894		
2,200.0	2,176.3	2,169.7	2,143.2	5.8	6.4	-97.49	-151.3	202.2	200.0	188.5	11.53	17.344		
2,300.0	2,271.7	2,266.7	2,236.9	6.4	7.0	-100.13	-166.2	222.6	222.0	209.5	12.52	17.738		
2,400.0	2,367.2	2,363.8	2,330.7	6.9	7.5	-102.30	-181.1	243.1	244.4	230.9	13.52	18.084		
2,500.0	2,462.7	2,460.9	2,424.4	7.5	8.0	-104.10	-196.0	263.5	267.1	252.6	14.53	18.388		
2,600.0	2,558.1	2,558.0	2,518.1	8.0	8.5	-105.62	-210.9	283.9	290.0	274.4	15.54	18.657		
2,700.0	2,653.6	2,655.0	2,611.9	8.6	9.0	-106.92	-225.7	304.3	313.1	296.5	16.57	18.897		
2,800.0	2,749.0	2,752.1	2,705.6	9.2	9.6	-108.04	-240.6	324.8	336.2	318.6	17.59	19.111		
2,900.0	2,844.5	2,849.2	2,799.3	9.8	10.1	-109.02	-255.5	345.2	359.5	340.9	18.63	19.303		
3,000.0	2,940.0	2,946.3	2,893.0	10.3	10.6	-109.88	-270.4	365.6	382.9	363.3	19.66	19.477		
3,100.0	3,035.4	3,043.4	2,986.8	10.9	11.1	-110.64	-285.3	386.1	406.4	385.7	20.70	19.634		
3,200.0	3,130.9	3,140.4	3,080.5	11.5	11.7	-111.31	-300.2	406.5	429.9	408.2	21.74	19.777		
3,300.0	3,226.4	3,237.5	3,174.2	12.1	12.2	-111.92	-315.0	426.9	453.5	430.7	22.78	19.907		
3,400.0	3,321.8	3,334.6	3,268.0	12.7	12.8	-112.47	-329.9	447.3	477.1	453.3	23.82	20.027		
3,500.0	3,417.3	3,431.7	3,361.7	13.3	13.3	-112.96	-344.8	467.8	500.7	475.9	24.87	20.137		
3,600.0	3,512.8	3,528.7	3,455.4	13.9	13.8	-113.41	-359.7	488.2	524.4	498.5	25.91	20.238		
3,700.0	3,608.2	3,625.8	3,549.1	14.5	14.4	-113.82	-374.6	508.6	548.1	521.2	26.96	20.332		
3,800.0	3,703.7	3,722.9	3,642.9	15.1	14.9	-114.20	-389.4	529.0	571.9	543.8	28.01	20.419		
3,900.0	3,799.2	3,820.0	3,736.6	15.7	15.4	-114.55	-404.3	549.5	595.6	566.6	29.05	20.499		
4,000.0	3,894.6	3,917.0	3,830.3	16.3	16.0	-114.87	-419.2	569.9	619.4	589.3	30.10	20.575		
4,100.0	3,990.1	4,014.1	3,924.1	16.9	16.5	-115.17	-434.1	590.3	643.2	612.0	31.15	20.645		
4,200.0	4,085.6	4,111.2	4,017.8	17.5	17.1	-115.44	-449.0	610.8	667.0	634.8	32.20	20.711		
4,300.0	4,181.0	4,208.3	4,111.5	18.1	17.6	-115.70	-463.8	631.2	690.8	657.5	33.26	20.773		
4,400.0	4,276.5	4,305.3	4,205.2	18.7	18.2	-115.94	-478.7	651.6	714.6	680.3	34.31	20.831		
4,500.0	4,372.0	4,402.4	4,299.0	19.3	18.7	-116.16	-493.6	672.0	738.5	703.1	35.36	20.885		
4,600.0	4,467.4	4,499.5	4,392.7	19.9	19.2	-116.37	-508.5	692.5	762.3	725.9	36.41	20.937		
4,700.0	4,562.9	4,596.6	4,486.4	20.5	19.8	-116.57	-523.4	712.9	786.2	748.7	37.46	20.985		
4,800.0	4,658.3	4,693.7	4,580.2	21.1	20.3	-116.76	-538.2	733.3	810.1	771.5	38.52	21.031		
4,900.0	4,753.8	4,790.7	4,673.9	21.7	20.9	-116.93	-553.1	753.8	833.9	794.4	39.57	21.075		

COMPASS 2003.21 Build 46

SRC Coyle 31-34D Pad Sec.34-T4N-R68W - SRC Coyle 42-34D - Wellbore #1 - Plan #1 (8-23-11)												Offset Site Error:	0.0 ft
Survey Program: 0-MWD												Offset Well Error:	0.0 ft
Reference		Offset		Semi Major Axis			Distance						Warning
Measured Depth (ft)	Vertical Depth (ft)	Measured Depth (ft)	Vertical Depth (ft)	Reference (ft)	Offset (ft)	Highside Toolface (°)	Offset Wellbore Centre +N/-S (ft)	+E/-W (ft)	Between Centres (ft)	Between Ellipses (ft)	Minimum Separation (ft)	Separation Factor	
5,000.0	4,849.3	4,889.5	4,769.3	22.3	21.4	-117.10	-568.2	774.5	857.8	817.2	40.62	21.117	
5,100.0	4,944.7	4,999.0	4,875.6	23.0	21.8	-117.45	-583.5	795.4	880.8	839.3	41.57	21.191	
5,207.2	5,047.1	5,116.5	4,990.8	23.6	22.2	-118.07	-597.2	814.2	904.0	861.5	42.50	21.269	
5,300.0	5,136.1	5,218.5	5,091.5	24.1	22.5	-119.05	-606.8	827.4	922.3	879.1	43.24	21.328	
5,400.0	5,232.9	5,328.7	5,200.9	24.4	22.8	-120.06	-614.8	838.4	939.2	895.3	43.88	21.406	
5,500.0	5,330.6	5,439.3	5,311.0	24.8	23.0	-121.02	-620.4	846.1	953.2	908.8	44.42	21.461	
5,600.0	5,428.9	5,550.0	5,421.6	25.1	23.2	-121.95	-623.4	850.2	964.3	919.5	44.86	21.496	
5,700.0	5,527.8	5,657.2	5,528.8	25.4	23.3	-122.82	-624.0	851.1	972.6	927.4	45.22	21.509	
5,800.0	5,627.2	5,756.6	5,628.2	25.6	23.4	-123.48	-624.0	851.1	978.8	933.2	45.52	21.503	
5,900.0	5,726.9	5,856.3	5,727.9	25.8	23.5	-123.93	-624.0	851.1	983.1	937.3	45.79	21.472	
6,000.0	5,826.8	5,956.2	5,827.8	25.9	23.6	-124.17	-624.0	851.1	985.5	939.5	46.02	21.414	
6,073.3	5,900.0	6,029.4	5,901.0	26.0	23.7	52.60	-624.0	851.1	986.0	939.8	46.18	21.351	
6,100.0	5,926.7	6,056.1	5,927.7	26.0	23.7	52.60	-624.0	851.1	986.0	939.8	46.24	21.323	
6,200.0	6,026.7	6,156.1	6,027.7	26.1	23.8	52.60	-624.0	851.1	986.0	939.6	46.45	21.226	
6,300.0	6,126.7	6,256.1	6,127.7	26.2	24.0	52.60	-624.0	851.1	986.0	939.4	46.67	21.127	
6,400.0	6,226.7	6,356.1	6,227.7	26.3	24.1	52.60	-624.0	851.1	986.0	939.1	46.89	21.028	
6,500.0	6,326.7	6,456.1	6,327.7	26.4	24.2	52.60	-624.0	851.1	986.0	938.9	47.11	20.929	
6,600.0	6,426.7	6,556.1	6,427.7	26.5	24.3	52.60	-624.0	851.1	986.0	938.7	47.34	20.829	
6,700.0	6,526.7	6,656.1	6,527.7	26.6	24.4	52.60	-624.0	851.1	986.0	938.5	47.57	20.728	
6,800.0	6,626.7	6,756.1	6,627.7	26.7	24.5	52.60	-624.0	851.1	986.0	938.2	47.80	20.627	
6,900.0	6,726.7	6,856.1	6,727.7	26.8	24.7	52.60	-624.0	851.1	986.0	938.0	48.04	20.526	
7,000.0	6,826.7	6,956.1	6,827.7	26.9	24.8	52.60	-624.0	851.1	986.0	937.8	48.28	20.425	
7,100.0	6,926.7	7,056.1	6,927.7	27.0	24.9	52.60	-624.0	851.1	986.0	937.5	48.52	20.323	
7,200.0	7,026.7	7,156.1	7,027.7	27.1	25.0	52.60	-624.0	851.1	986.0	937.3	48.76	20.221	
7,300.0	7,126.7	7,256.1	7,127.7	27.2	25.2	52.60	-624.0	851.1	986.0	937.0	49.01	20.119	
7,400.0	7,226.7	7,356.1	7,227.7	27.3	25.3	52.60	-624.0	851.1	986.0	936.8	49.26	20.017	
7,500.0	7,326.7	7,456.1	7,327.7	27.4	25.4	52.60	-624.0	851.1	986.0	936.5	49.51	19.914	
7,600.0	7,426.7	7,556.1	7,427.7	27.5	25.5	52.60	-624.0	851.1	986.0	936.3	49.77	19.812	
7,700.0	7,526.7	7,656.1	7,527.7	27.6	25.7	52.60	-624.0	851.1	986.0	936.0	50.03	19.709	
7,800.0	7,626.7	7,756.1	7,627.7	27.7	25.8	52.60	-624.0	851.1	986.0	935.7	50.29	19.607	
7,900.0	7,726.7	7,856.1	7,727.7	27.9	25.9	52.60	-624.0	851.1	986.0	935.5	50.55	19.505	
7,961.8	7,788.6	7,918.0	7,789.6	27.9	26.0	52.60	-624.0	851.1	986.0	935.3	50.72	19.441	
7,993.3	7,820.0	7,948.4	7,820.0	28.0	26.1	52.60	-624.0	851.1	986.0	935.2	50.80	19.410	

<b>Company:</b>	Synergy Resources	<b>Local Co-ordinate Reference:</b>	Well SRC Coyle 34SD
<b>Project:</b>	SEC.34-T4N-R68W	<b>TVD Reference:</b>	WELL @ 5125.0ft (Original Well Elev)
<b>Reference Site:</b>	SRC Coyle 31-34D Pad Sec.34-T4N-R68W	<b>MD Reference:</b>	WELL @ 5125.0ft (Original Well Elev)
<b>Site Error:</b>	0.0ft	<b>North Reference:</b>	True
<b>Reference Well:</b>	SRC Coyle 34SD	<b>Survey Calculation Method:</b>	Minimum Curvature
<b>Well Error:</b>	0.0ft	<b>Output errors are at</b>	2.00 sigma
<b>Reference Wellbore</b>	Wellbore #1	<b>Database:</b>	Landmark
<b>Reference Design:</b>	Plan #1 (8-23-11)	<b>Offset TVD Reference:</b>	Offset Datum

Reference Depths are relative to WELL @ 5125.0ft (Original Well Elev) Coordinates are relative to: SRC Coyle 34SD  
Offset Depths are relative to Offset Datum  
Coordinate System is US State Plane 1983, Colorado Northern Zone  
Central Meridian is -105.500000 °  
Grid Convergence at Surface is: 0.33°



<b>Company:</b>	Synergy Resources	<b>Local Co-ordinate Reference:</b>	Well SRC Coyle 34SD
<b>Project:</b>	SEC.34-T4N-R68W	<b>TVD Reference:</b>	WELL @ 5125.0ft (Original Well Elev)
<b>Reference Site:</b>	SRC Coyle 31-34D Pad Sec.34-T4N-R68W	<b>MD Reference:</b>	WELL @ 5125.0ft (Original Well Elev)
<b>Site Error:</b>	0.0ft	<b>North Reference:</b>	True
<b>Reference Well:</b>	SRC Coyle 34SD	<b>Survey Calculation Method:</b>	Minimum Curvature
<b>Well Error:</b>	0.0ft	<b>Output errors are at</b>	2.00 sigma
<b>Reference Wellbore</b>	Wellbore #1	<b>Database:</b>	Landmark
<b>Reference Design:</b>	Plan #1 (8-23-11)	<b>Offset TVD Reference:</b>	Offset Datum

Reference Depths are relative to WELL @ 5125.0ft (Original Well Elev) Coordinates are relative to: SRC Coyle 34SD  
 Offset Depths are relative to Offset Datum Coordinate System is US State Plane 1983, Colorado Northern Zone  
 Central Meridian is -105.500000 ° Grid Convergence at Surface is: 0.33°

