

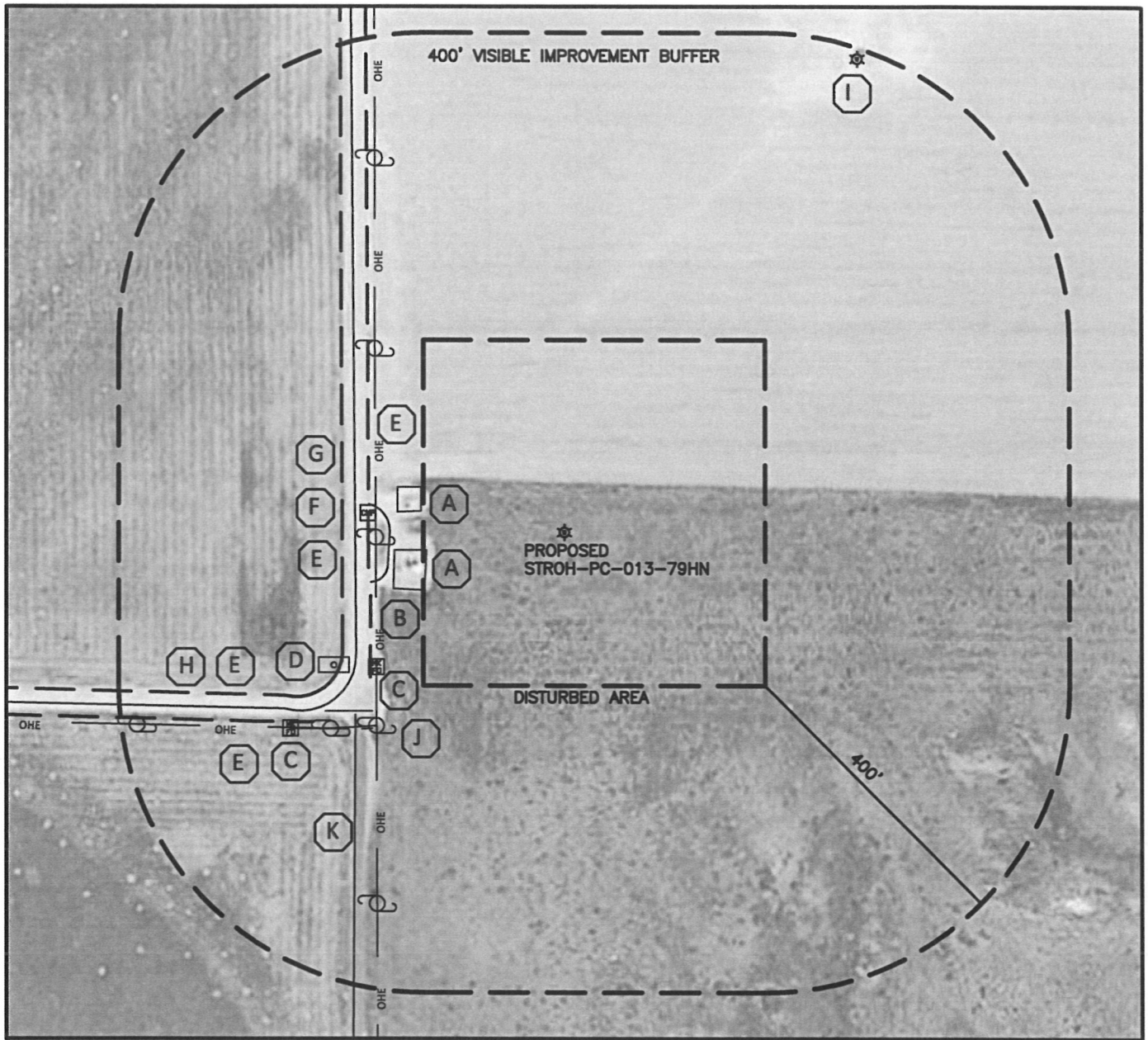
LOCATION DRAWING

FOR THE PROPOSED STROH-PC-013-79HN

SECTIONS 13&14
TOWNSHIP 4N
RANGE 67W

MAY 10, 2011

THIS MAP DOES NOT REPRESENT A BOUNDARY SURVEY



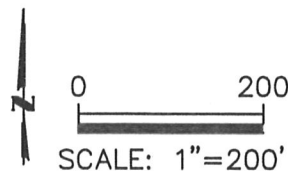
IMPROVEMENTS

- (A) EXISTING NOBLE PRODUCTION FACILITY, 184' WEST, 192' WEST
- (B) OVERHEAD POWER, 249' WEST
- (C) UTILITY MARKER, 304' SW, 442' SW
- (D) TELEPHONE PEDESTAL, 349' SW
- (E) DIRT DITCH, 258' WEST, 293' WEST, 384' SW, 413' SW
- (F) STORM PIPE, 260' WEST
- (G) COUNTY ROAD 23, 275' WEST
- (H) COUNTY ROAD 44, 389' SW

- (I) EXISTING UPRC 13-13E, 727' NE
- (J) FIELD GATE, 348' SW
- (K) FIELD ROAD 364' SW

NEW WELL DATA

ELEV=4846', PDOP=1.2
FSL=200', FWL=294'
LATITUDE: N 40.30519
LONGITUDE: W 104.84765
NEAREST PROPERTY LINE: 200' SOUTH
NEAREST ACTIVE RAILROAD: 2307' SOUTHEAST
NEAREST BUILDING: STORAGE SHED 2417' NE
NEAREST COUNTY ROAD (WCR 23): 275' WEST
NEAREST UTILITY (OHE): 249' WEST



THE ORIENTATION OF THE OIL AND GAS LOCATION AS SHOWN HEREON WAS DETERMINED BY NOBLE ENERGY.

DISTANCES FOR THE IMPROVEMENTS WERE MADE BY USING FIELD MEASUREMENTS AND AERIAL PHOTOGRAPHY. THE ACCURACY OF MEASUREMENTS MADE BY USING AERIAL PHOTOGRAPHY ARE WITHIN A TWENTY FOOT TOLERANCE.