

HALLIBURTON

WILLIAMS PRODUCTION RMT INC - EBUS

SG 31-27
GRAND VALLEY
Garfield County , Colorado

Cement Surface Casing
01-Oct-2011

Post Job Summary

The Road to Excellence Starts with Safety

| | | | |
|---|--------------------------------|---|------------------------|
| Sold To #: 300721 | Ship To #: 2881915 | Quote #: | Sales Order #: 8512789 |
| Customer: WILLIAMS PRODUCTION RMT INC - EBUS | | Customer Rep: Geary, Scott | |
| Well Name: SG | Well #: 31-27 | API/UWI #: 05-045-20489 | |
| Field: GRAND VALLEY | City (SAP): UNKNOWN | County/Parish: Garfield | State: Colorado |
| Lat: N 39.415 deg. OR N 39 deg. 24 min. 55.62 secs. | | Long: W 108.091 deg. OR W -109 deg. 54 min. 32.49 secs. | |
| Contractor: H&P Drilling | Rig/Platform Name/Num: H&P 278 | | |
| Job Purpose: Cement Surface Casing | | | |
| Well Type: Development Well | | Job Type: Cement Surface Casing | |
| Sales Person: KOHL, KYLE | | Srcv Supervisor: ANGLESTEIN, TROY MBU ID Emp #: 436099 | |

Job Personnel

| HES Emp Name | Exp Hrs | Emp # | HES Emp Name | Exp Hrs | Emp # | HES Emp Name | Exp Hrs | Emp # |
|-------------------------------|---------|--------|-------------------------|---------|--------|------------------------|---------|--------|
| ANGLESTEIN, TROY Edward WM | 6.5 | 436099 | JENSEN, JESSE Robert | 6.5 | 478774 | KEANE, JOHN Donovon | 6.5 | 486519 |
| WILKERSON, JAMES Michael | 6.5 | 496763 | | | | | | |

Equipment

| HES Unit # | Distance-1 way | HES Unit # | Distance-1 way | HES Unit # | Distance-1 way | HES Unit # | Distance-1 way |
|------------|----------------|------------|----------------|------------|----------------|------------|----------------|
| 10001431 | 60 mile | 10248065 | 60 mile | 10551730C | 60 mile | 10724643 | 60 mile |
| 10951247 | 60 mile | 10973571 | 60 mile | | | | |

Job Hours

| Date | On Location Hours | Operating Hours | Date | On Location Hours | Operating Hours | Date | On Location Hours | Operating Hours |
|------------|-------------------|-----------------|--|-------------------|-----------------|------|-------------------|-----------------|
| 10/01/2011 | 6.5 | 1 | | | | | | |
| TOTAL | | | Total is the sum of each column separately | | | | | |

Job

Job Times

| Formation Name | Top | Bottom | Called Out | Date | Time | Time Zone |
|------------------------|----------|-------------------|---------------|-----------------|-------|-----------|
| Formation Depth (MD) | | | On Location | 01 - Oct - 2011 | 02:30 | MST |
| Form Type | BHST | | Job Started | 01 - Oct - 2011 | 05:30 | MST |
| Job depth MD | 1436. ft | Job Depth TVD | Job Completed | 01 - Oct - 2011 | 09:40 | MST |
| Water Depth | | Wk Ht Above Floor | Job Completed | 01 - Oct - 2011 | 10:39 | MST |
| Perforation Depth (MD) | From | To | Departed Loc | 01 - Oct - 2011 | 12:00 | MST |

Well Data

| Description | New / Used | Max pressure psig | Size in | ID in | Weight lbm/ft | Thread | Grade | Top MD ft | Bottom MD ft | Top TVD ft | Bottom TVD ft |
|-----------------------|------------|-------------------|---------|-------|---------------|--------|-------|-----------|--------------|------------|---------------|
| 13 1/2" Open Hole | | | | 13.5 | | | | . | 1436. | | |
| 9 5/8" Surface Casing | New | | 9.625 | 9.001 | 32.3 | | H-40 | . | 1426. | | |

Sales/Rental/3rd Party (HES)

| Description | Qty | Qty uom | Depth | Supplier |
|--|-----|---------|-------|----------|
| PLUG,CMTG, TOP, 9 5/8, HWE, 8.16 MIN/9.06 MA | 1 | EA | | |

Tools and Accessories

| Type | Size | Qty | Make | Depth | Type | Size | Qty | Make | Depth | Type | Size | Qty | Make |
|--------------|------|-----|------|-------|-------------|------|-----|------|-------|----------------|-------|-----|------|
| Guide Shoe | | | | | Packer | | | | | Top Plug | 9.625 | 1 | HES |
| Float Shoe | | | | | Bridge Plug | | | | | Bottom Plug | | | |
| Float Collar | | | | | Retainer | | | | | SSR plug set | | | |
| Insert Float | | | | | | | | | | Plug Container | 9.625 | 1 | HES |
| Stage Tool | | | | | | | | | | Centralizers | | | |

Miscellaneous Materials

| Gelling Agt | Conc | Surfactant | Conc | Acid Type | Qty | Conc % |
|---------------|------|------------|------|-----------|------|--------|
| Treatment Fld | Conc | Inhibitor | Conc | Sand Type | Size | Qty |

Fluid Data

| |
|-----------------|
| Stage/Plug #: 1 |
|-----------------|

| Fluid # | Stage Type | Fluid Name | Qty | Qty uom | Mixing Density lbm/gal | Yield ft ³ /sk | Mix Fluid Gal/sk | Rate bbl/min | Total Mix Fluid Gal/sk |
|--|----------------------|-------------------------------|--------|-----------------------------------|------------------------|---------------------------|------------------|--------------|------------------------|
| 1 | Water Spacer | | 20.00 | bbl | 8.34 | .0 | .0 | 6 | |
| 2 | VersaCem Lead Cement | VERSACEM (TM) SYSTEM (452010) | 200.0 | sacks | 12.3 | 2.38 | 13.75 | 8 | 13.75 |
| | 13.75 Gal | FRESH WATER | | | | | | | |
| 3 | VersaCem Tail Cement | VERSACEM (TM) SYSTEM (452010) | 160.0 | sacks | 12.8 | 2.11 | 11.75 | 8 | 11.75 |
| | 11.75 Gal | FRESH WATER | | | | | | | |
| 4 | Displacement Fluid | | 110.00 | bbl | 8.34 | .0 | .0 | 10 | |
| Calculated Values | | Pressures | | Volumes | | | | | |
| Displacement | 110.3 | Shut In: Instant | | Lost Returns | 0 | Cement Slurry | 145 | Pad | |
| Top Of Cement | SURFACE | 5 Min | | Cement Returns | 40 | Actual Displacement | 110.3 | Treatment | |
| Frac Gradient | | 15 Min | | Spacers | 20 | Load and Breakdown | | Total Job | 276 |
| Rates | | | | | | | | | |
| Circulating | | Mixing | 8 | Displacement | 10 | Avg. Job | 8 | | |
| Cement Left In Pipe | Amount | 44.34 ft | Reason | Shoe Joint | | | | | |
| Frac Ring # 1 @ | ID | Frac ring # 2 @ | ID | Frac Ring # 3 @ | ID | Frac Ring # 4 @ | ID | | |
| The Information Stated Herein Is Correct | | | | Customer Representative Signature | | | | | |

The Road to Excellence Starts with Safety

| | | | |
|---|---------------------|---|------------------------|
| Sold To #: 300721 | Ship To #: 2881915 | Quote #: | Sales Order #: 8512789 |
| Customer: WILLIAMS PRODUCTION RMT INC - EBUS | | Customer Rep: Geary, Scott | |
| Well Name: SG | Well #: 31-27 | API/UWI #: 05-045-20489 | |
| Field: GRAND VALLEY | City (SAP): UNKNOWN | County/Parish: Garfield | State: Colorado |
| Legal Description: | | | |
| Lat: N 39.415 deg. OR N 39 deg. 24 min. 55.62 secs. | | Long: W 108.091 deg. OR W -109 deg. 54 min. 32.49 secs. | |
| Contractor: H&P Drilling | | Rig/Platform Name/Num: H&P 278 | |
| Job Purpose: Cement Surface Casing | | | Ticket Amount: |
| Well Type: Development Well | | Job Type: Cement Surface Casing | |
| Sales Person: KOHL, KYLE | | Srv Supervisor: ANGLESTEIN, TROY | MBU ID Emp #: 436099 |

| Activity Description | Date/Time | Cht # | Rate bbl/min | Volume bbl | | Pressure psig | | Comments |
|---------------------------------------|---------------------|-------|--------------|------------|-------|---------------|--------|--|
| | | | | Stage | Total | Tubing | Casing | |
| Call Out | 10/01/2011 02:30 | | | | | | | |
| Pre-Convoy Safety Meeting | 10/01/2011 04:00 | | | | | | | ALL HES EMPLOYEES |
| Arrive At Loc | 10/01/2011 05:30 | | | | | | | RIG STILL RUNNING CASING CIRCULATED FOR 1 HOUR |
| Assessment Of Location Safety Meeting | 10/01/2011 05:45 | | | | | | | ALL HES EMPLOYEES |
| Rig-Up Equipment | 10/01/2011 08:30 | | | | | | | 1 HT 400 PUMP TRUCK, 1 660 BULK TRUCK, 1 BODYLOAD, 1 9.625 QUICK LATCH PLUG CONTAINER, 1 F 450 P/U |
| Pre-Job Safety Meeting | 10/01/2011 09:30 | | | | | | | ALL HES EMPLOYEES, RIG CREW, CO REP. |
| Start Job | 10/01/2011 09:40 | | | | | | | 9.625 CASING SET AT 1126', FC 1401.38', TD: 1436, OPEN HOLE 13.5", MUD WT 9.0 PPG, 800 BBLs OF H2O ON LOCATION, WATER SAMPLE SUBMITTED. CASING WAS RECIPROCATED THROUGHOUT JOB |
| Pump Water | 10/01/2011 09:41 | | 2 | 2 | | | 30.0 | FILL LINES |
| Pressure Test | 10/01/2011 09:42 | | 0.5 | 0.5 | | | 3222.0 | NO LEAKS |
| Pump Spacer 1 | 10/01/2011 09:45 | | 6 | 20 | | | 245.0 | FRESH WATER |
| Activity Description | Date/Time | Cht # | Rate bbl/min | Volume bbl | | Pressure psig | | Comments |
| | | | | Stage | Total | Tubing | Casing | |

Sold To #: 300721

Ship To #: 2881915

Quote # :

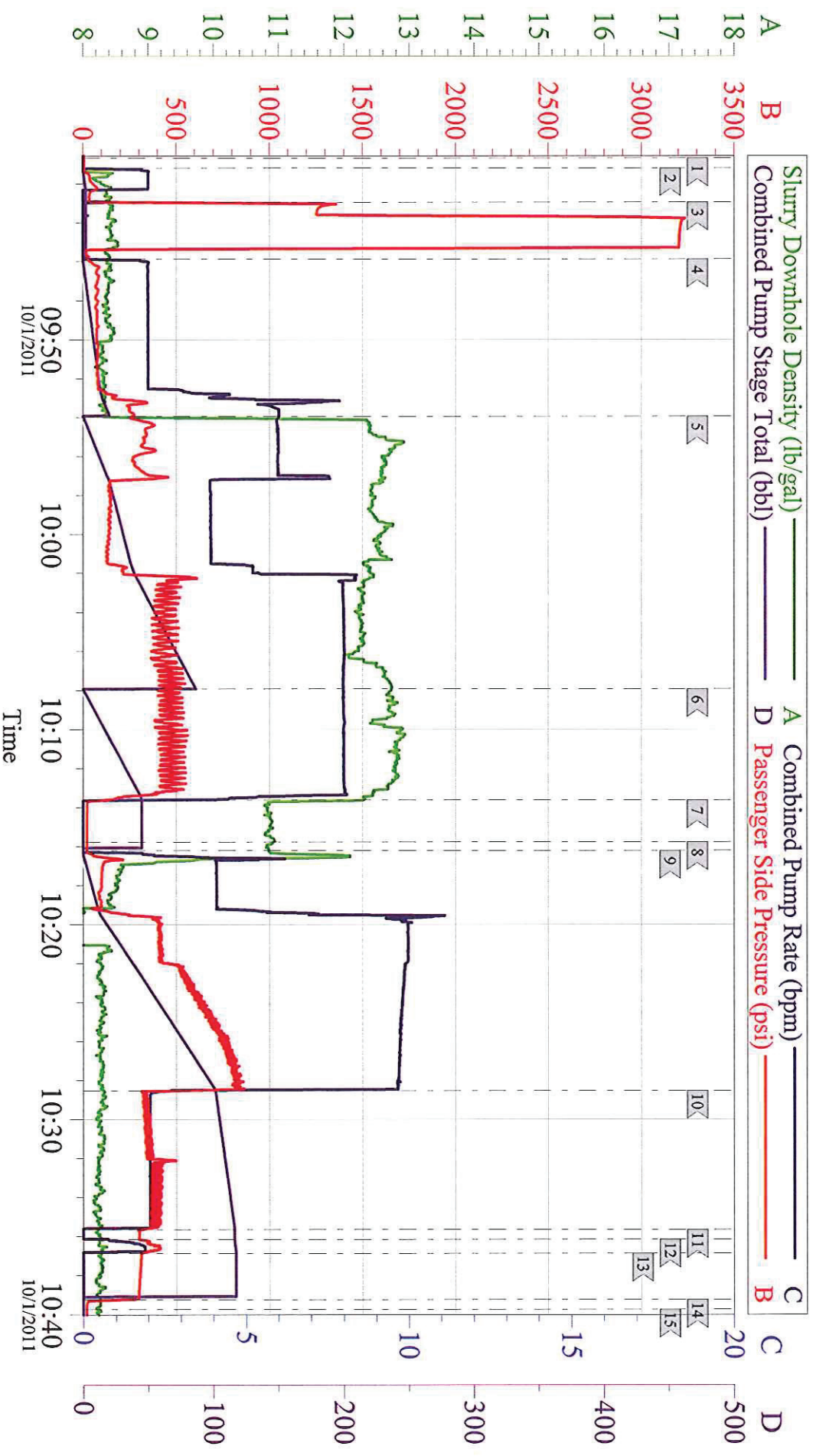
Sales Order # :

8512789

SUMMIT Version: 7.2.27

Saturday, October 01, 2011 12:16:00

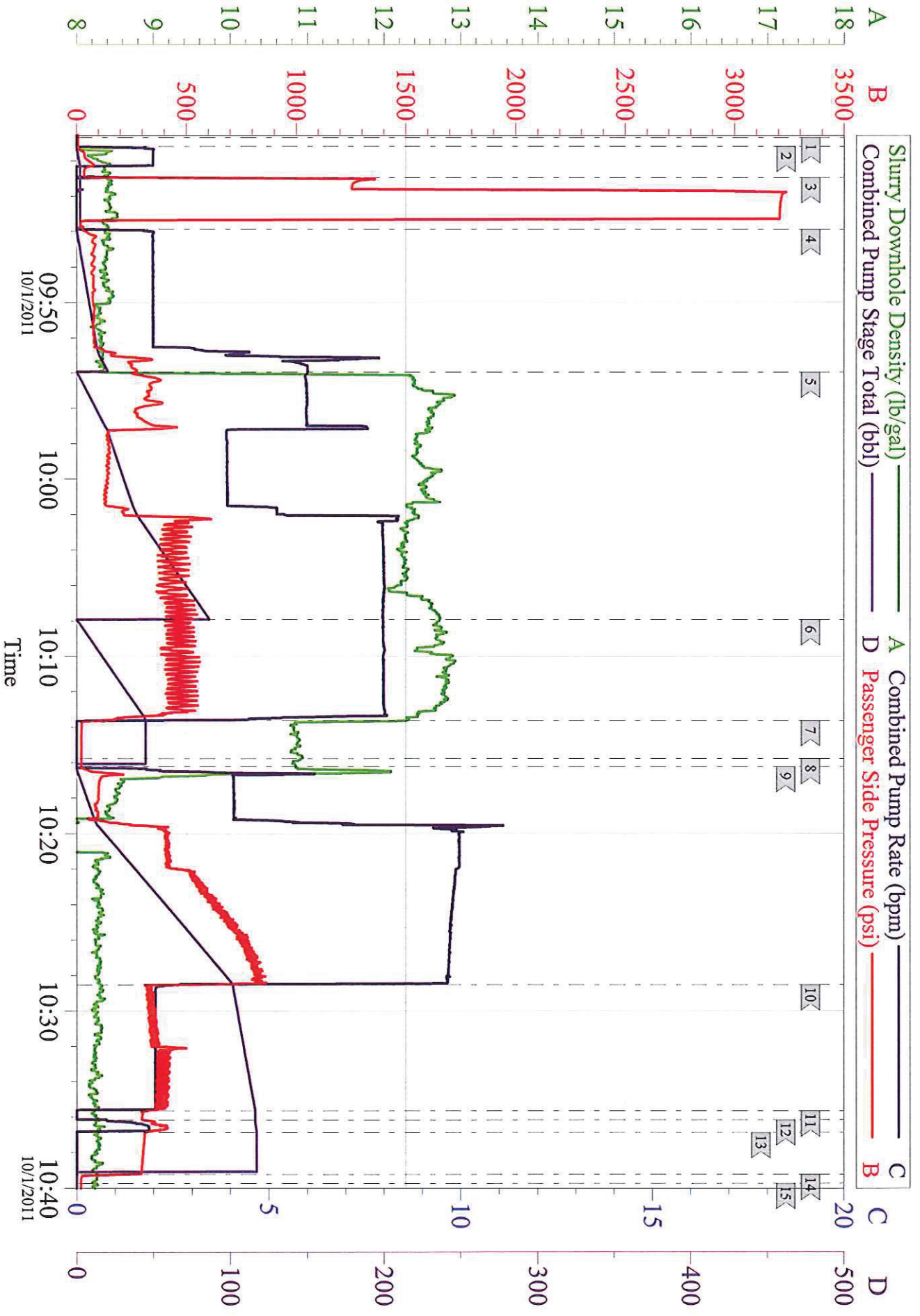
| | | | | | | | |
|---|---------------------|--|----|-------|--|-------|---|
| Pump Lead Cement | 10/01/2011 09:53 | | 8 | 84.8 | | 478.0 | 200 SKS VERSACEM CMT TO BE MIXED AT 12.3 PPG, 2.38 YIELD, 13.75 GAL/SK, CMT TO BE WEIGHED VIA PRESSURE BALANCED MUD SCALES WET AND DRY SAMPLES SUBMITTED |
| Pump Tail Cement | 10/01/2011 10:07 | | 8 | 60.1 | | 470.0 | 160 SKS VERSACEM CMT TO BE MIXED AT 12.8 PPG, 2.11 YIELD, 11.75 GAL/SK, CMT TO BE WEIGHED VIA PRESSURE BALANCED MUD SCALES. WET AND DRY SAMPLES SUBMITTED. |
| Drop Plug | 10/01/2011 10:15 | | | | | | PLUG LAUNCHED |
| Pump Displacement | 10/01/2011 10:16 | | 10 | 110.3 | | 800.0 | FRESHWATER |
| Cement Returns to Surface | 10/01/2011 10:25 | | 10 | 70 | | 680.0 | 40 BBLS OF CEMENT TO SURFACE. |
| Slow Rate | 10/01/2011 10:28 | | 2 | 100 | | 260.0 | 10 BBLS PRIOR TO CALCULATED DISPLACEMENT |
| Shutdown | 10/01/2011 10:35 | | | | | | FOR NO MORE THEN 5 MINUTES, |
| Pump Water | 10/01/2011 10:36 | | 2 | 4 | | 370.0 | DID NOT BUMP PLUG. OVER DISPLACED 4 BBLS PER CO. REP. STILL DID NOT BUMP PLUG |
| Check Floats | 10/01/2011 10:39 | | | | | | FLOATS HOLDING, NO ANNULAR FLOW |
| End Job | 10/01/2011 10:39 | | | | | | THANK YOU FOR USING HES FROM TROY ANGLESTEIN AND CREW. |
| Post-Job Safety Meeting (Pre Rig-Down) | 10/01/2011 10:40 | | | | | | ALL HES EMPLOYEES |
| Rig-Down Equipment | 10/01/2011 11:00 | | | | | | SAFELY |
| Pre-Convoy Safety Meeting | 10/01/2011 11:50 | | | | | | ALL HES EMPLOYEES |
| Crew Leave Location | 10/01/2011 12:00 | | | | | | SITE WAS AS CLEAN AS WHEN WE ARRIVED |



Local Event Log

| | | | | | | | | |
|----|-----------------|----------|----|------------------|----------|----|-------------------|----------|
| 1 | START JOB | 09:40:42 | 2 | FILL LINES | 09:41:11 | 3 | TEST LINES | 09:42:57 |
| 4 | PUMP H2O SPACER | 09:45:53 | 5 | PUMP LEAD CEMENT | 09:53:57 | 6 | PUMP TAIL CEMENT | 10:07:55 |
| 7 | SHUTDOWN | 10:13:37 | 8 | DROP PLUG | 10:15:46 | 9 | PUMP DISPLACEMENT | 10:16:13 |
| 10 | SLOW RATE | 10:28:32 | 11 | SHUTDOWN | 10:35:39 | 12 | PUMP WATER | 10:36:09 |
| 13 | SHUTDOWN | 10:36:53 | 14 | CHECK FLOATS | 10:39:15 | 15 | END JOB | 10:39:45 |

| | | | | | |
|-------------------|-------------|--------------------|-----------------|----------------|--------------|
| Customer: | WILLIAMS | Job Date: | 01-Oct-2011 | Sales Order #: | 8512789 |
| Well Description: | SG31-27 | Job Type: | SURFACE | ADC Used: | YES |
| Customer Rep: | SCOTT GEARY | Cement Supervisor: | TROY ANGLESTEIN | Elite 2: | JESSE JENSEN |



| | | | | | |
|-------------------|-------------|--------------------|-----------------|----------------|--------------|
| Customer: | WILLIAMS | Job Date: | 01-Oct-2011 | Sales Order #: | 8512789 |
| Well Description: | SG31-27 | Job Type: | SURFACE | ADC Used: | YES |
| Customer Rep: | SCOTT GEARY | Cement Supervisor: | TROY ANGLESTEIN | Elite 2: | JESSE JENSEN |

OptiCem v6.4.10
01-Oct-11 11:53