



End of Well Report

Prepared for



Dixon B06

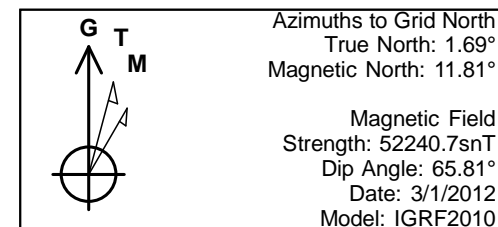
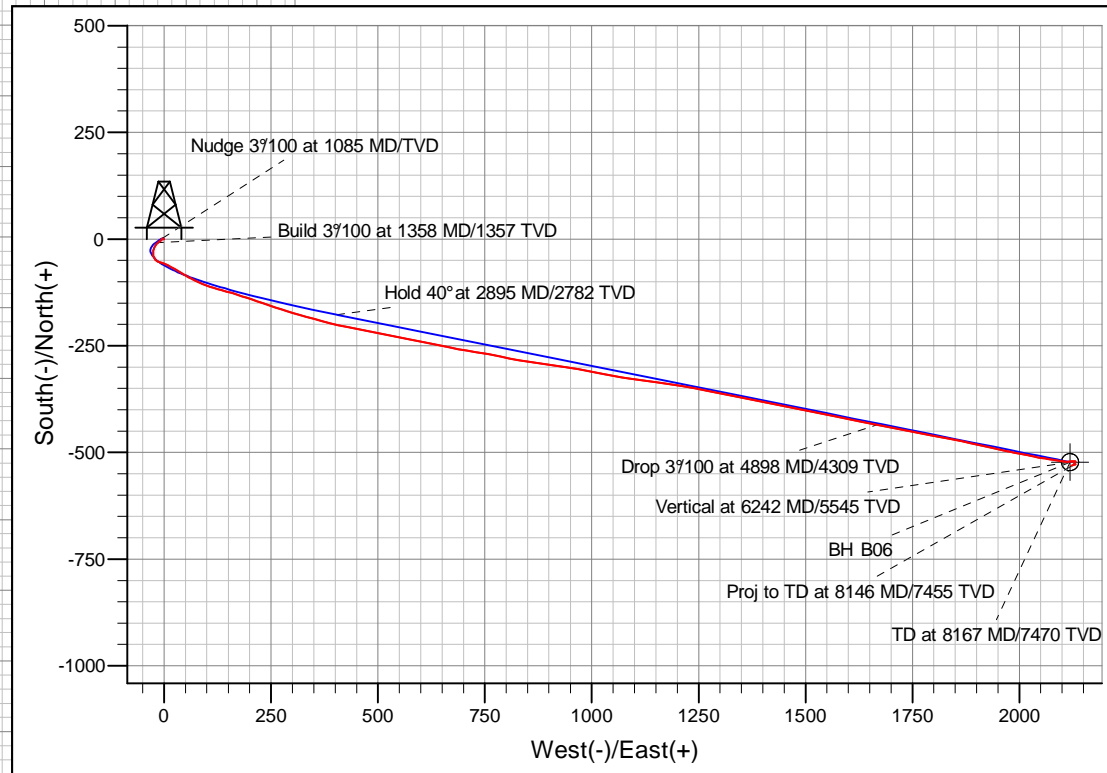
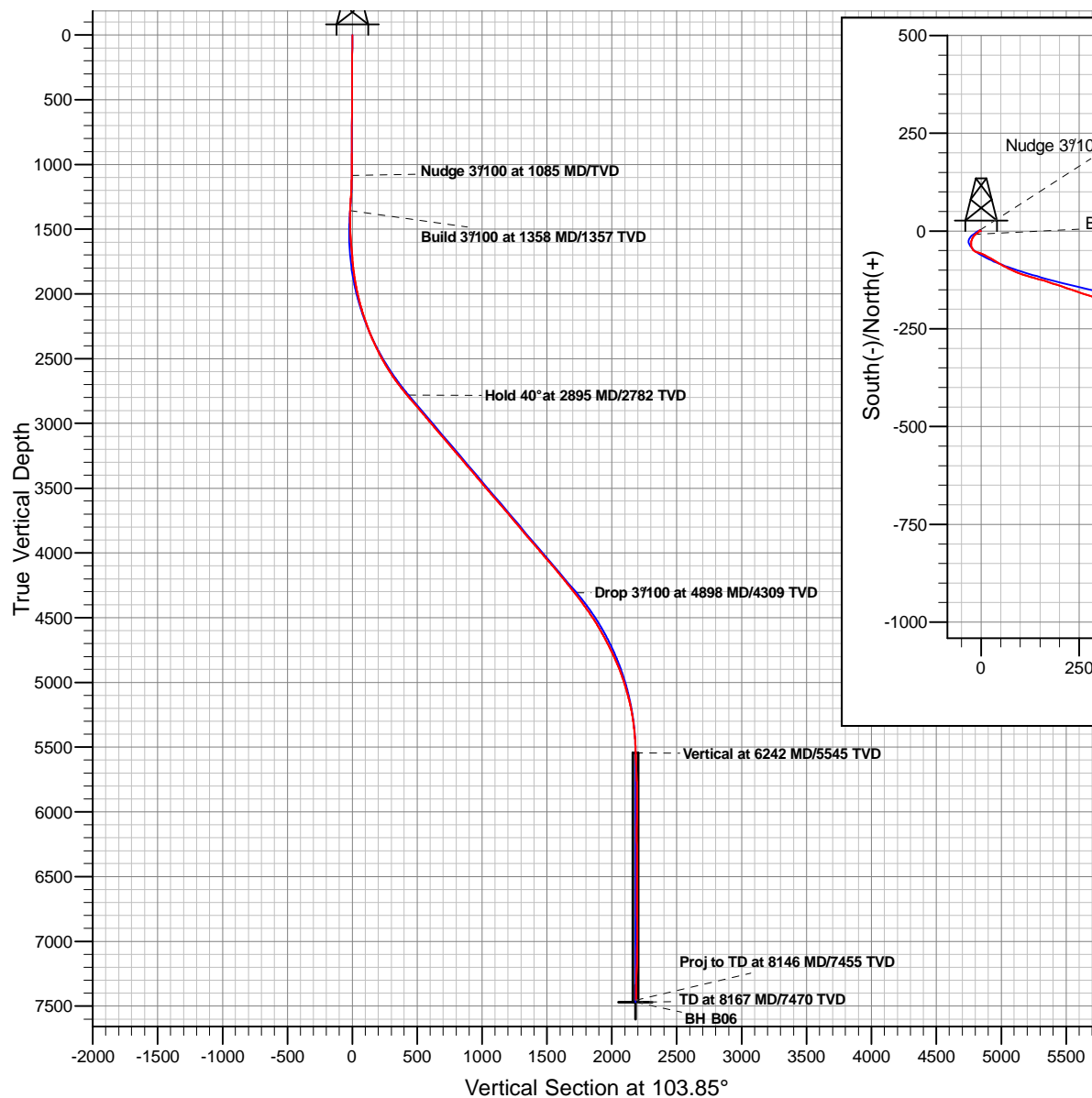
February 28, 2012

ARK Directional Services Inc
191 University Blvd, # 601
Denver, CO 80206



Antero Resources

Dixon B
Antero Dixon B06 (111307)
Planned Vs. Actual



PROJECT DETAILS: Dixon	
Geodetic System:	Universal Transverse Mercator
Datum:	North American Datum 1983
Ellipsoid:	GRS 1980
Zone:	Zone 13N (108 W to 102 W)
System Datum:	Mean Sea Level

Plan: Dixon B06
Created By: ARK Directional Services Inc.
Date: 8:00, February 26 2012

Antero Resources

Dixon

Dixon B

Antero Dixon B06 (111307) - Slot B06

Dixon B06

Survey: Dixon B06 MWD

Survey Report - Geographic

28 February, 2012

ARK Directional Services

Survey Report - Geographic

Company:	Antero Resources	Local Co-ordinate Reference:	Well Antero Dixon B06 (111307) - Slot B06
Project:	Dixon	TVD Reference:	KB @ 5544.00ft
Site:	Dixon B	MD Reference:	KB @ 5544.00ft
Well:	Antero Dixon B06 (111307)	North Reference:	Grid
Wellbore:	Dixon B06	Survey Calculation Method:	Minimum Curvature
Design:	Dixon B06	Database:	EDM5000

Project	Dixon		
Map System:	Universal Transverse Mercator	System Datum:	Mean Sea Level
Geo Datum:	North American Datum 1983		
Map Zone:	Zone 13N (108 W to 102 W)		

Site	Dixon B				
Site Position:		Northing:	14,364,517.56 usft	Latitude:	39.524071000°N
From:	Lat/Long	Easting:	890,418.04 usft	Longitude:	107.659523000°W
Position Uncertainty:	0.00 ft	Slot Radius:	13.20 in	Grid Convergence:	-1.69 °

Well	Antero Dixon B06 (111307) - Slot B06					
Well Position	+N/-S	0.00 ft	Northing:	14,364,536.27 usft	Latitude:	39.524116849°N
	+E/-W	0.00 ft	Easting:	890,350.53 usft	Longitude:	107.659764118°W
Position Uncertainty		0.00 ft	Wellhead Elevation:	ft	Ground Level:	5,520.00 ft

Wellbore	Dixon B06				
Magnetics	Model Name	Sample Date	Declination (°)	Dip Angle (°)	Field Strength (nT)
	IGRF2010	03/01/12	10.11	65.81	52,241

Design	Dixon B06				
Audit Notes:					
Version:	1.0	Phase:	ACTUAL	Tie On Depth:	0.00
Vertical Section:	Depth From (TVD) (ft)	+N/-S (ft)	+E/-W (ft)	Direction (°)	
	0.00	0.00	0.00	103.85	

Survey Program	Date	02/26/12			
From (ft)	To (ft)	Survey (Wellbore)	Tool Name	Description	
100.00	915.00	B06 Surf Gyro (Dixon B06)	NS-GYRO-MS	North sensing gyrocompassing m/s	
1,000.00	8,146.00	Dixon B06 MWD (Dixon B06)	MWD	MWD - Standard	

Survey										
Measured Depth (ft)	Inclination (°)	Azimuth (°)	Vertical Depth (ft)	+N/-S (ft)	+E/-W (ft)	Map Northing (usft)	Map Easting (usft)	Latitude	Longitude	
915.00	0.35	354.27	914.99	0.48	-3.72	14,364,536.75	890,346.81	39.524117868°N	107.659777349°W	
1,000.00	0.35	354.27	999.98	1.00	-3.77	14,364,537.26	890,346.75	39.524119282°N	107.659777586°W	
1,025.60	0.35	354.27	1,025.58	1.15	-3.79	14,364,537.42	890,346.74	39.524119707°N	107.659777658°W	
1,061.00	0.88	186.40	1,060.98	0.99	-3.83	14,364,537.26	890,346.70	39.524119258°N	107.659777787°W	
1,156.00	3.69	226.61	1,155.90	-1.83	-6.13	14,364,534.43	890,344.39	39.524111319°N	107.659785650°W	
1,250.00	6.42	233.91	1,249.53	-7.01	-12.58	14,364,529.26	890,337.95	39.524096600°N	107.659807944°W	
1,345.00	7.51	214.53	1,343.84	-15.25	-20.39	14,364,521.01	890,330.13	39.524073348°N	107.659834755°W	
1,439.00	8.22	189.92	1,436.98	-26.94	-25.03	14,364,509.33	890,325.49	39.524040918°N	107.659849972°W	
1,534.00	7.21	167.82	1,531.14	-39.46	-24.94	14,364,496.81	890,325.58	39.524006577°N	107.659848349°W	
1,628.00	6.42	140.00	1,624.50	-49.25	-20.32	14,364,487.01	890,330.21	39.523980081°N	107.659830944°W	
1,723.00	4.00	92.49	1,719.14	-53.47	-13.59	14,364,482.80	890,336.93	39.523969063°N	107.659806668°W	

ARK Directional Services

Survey Report - Geographic

Company:	Antero Resources	Local Co-ordinate Reference:	Well Antero Dixon B06 (111307) - Slot B06
Project:	Dixon	TVD Reference:	KB @ 5544.00ft
Site:	Dixon B	MD Reference:	KB @ 5544.00ft
Well:	Antero Dixon B06 (111307)	North Reference:	Grid
Wellbore:	Dixon B06	Survey Calculation Method:	Minimum Curvature
Design:	Dixon B06	Database:	EDM5000

Survey									
Measured Depth (ft)	Inclination (°)	Azimuth (°)	Vertical Depth (ft)	+N/-S (ft)	+E/-W (ft)	Map Northing (usft)	Map Easting (usft)	Latitude	Longitude
1,817.00	7.38	109.59	1,812.67	-55.63	-4.63	14,364,480.63	890,345.90	39.523963844°N	107.659774678°W
1,912.00	9.71	117.32	1,906.61	-61.36	8.24	14,364,474.91	890,358.77	39.523949185°N	107.659728494°W
2,006.00	13.49	120.22	1,998.68	-70.52	24.77	14,364,465.75	890,375.29	39.523925395°N	107.659669003°W
2,100.00	15.82	120.62	2,089.61	-82.56	45.27	14,364,453.70	890,395.79	39.523894010°N	107.659595111°W
2,195.00	19.38	116.93	2,180.15	-96.30	70.47	14,364,439.96	890,421.00	39.523858362°N	107.659504384°W
2,289.00	20.48	109.81	2,268.54	-108.94	99.86	14,364,427.32	890,450.38	39.523826071°N	107.659398979°W
2,384.00	23.71	105.11	2,356.55	-119.56	133.94	14,364,416.71	890,484.47	39.523799714°N	107.659277115°W
2,478.00	26.28	107.39	2,441.75	-130.71	172.05	14,364,405.56	890,522.58	39.523772220°N	107.659140941°W
2,578.00	30.10	109.41	2,529.87	-145.66	216.85	14,364,390.60	890,567.37	39.523734822°N	107.658980695°W
2,667.00	33.00	108.31	2,605.71	-160.69	260.92	14,364,375.57	890,611.44	39.523697150°N	107.658823013°W
2,767.00	36.61	106.20	2,687.81	-177.57	315.42	14,364,358.69	890,665.95	39.523655259°N	107.658628157°W
2,857.00	39.11	104.71	2,758.86	-192.27	368.66	14,364,343.99	890,719.18	39.523619252°N	107.658438032°W
2,951.00	40.69	101.50	2,830.98	-205.91	427.37	14,364,330.35	890,777.90	39.523586591°N	107.658228616°W
3,045.00	40.39	101.41	2,902.41	-218.05	487.25	14,364,318.22	890,837.78	39.523558156°N	107.658015222°W
3,140.00	39.68	101.41	2,975.15	-230.14	547.16	14,364,306.13	890,897.68	39.523529845°N	107.657801762°W
3,235.00	40.61	100.32	3,047.77	-241.67	607.30	14,364,294.59	890,957.83	39.523503063°N	107.657587480°W
3,329.00	40.61	102.51	3,119.13	-253.78	667.27	14,364,282.48	891,017.80	39.523474705°N	107.657373784°W
3,424.00	40.52	97.90	3,191.32	-264.72	728.04	14,364,271.54	891,078.56	39.523449612°N	107.657157379°W
3,518.00	40.30	102.69	3,262.91	-275.60	787.96	14,364,260.66	891,138.48	39.523424624°N	107.656943986°W
3,612.00	40.21	98.60	3,334.66	-286.82	847.63	14,364,249.45	891,198.15	39.523398684°N	107.656731441°W
3,707.00	40.69	98.12	3,406.95	-295.78	908.60	14,364,240.49	891,259.13	39.523379043°N	107.656514490°W
3,801.00	39.90	99.92	3,478.65	-305.30	968.64	14,364,230.96	891,319.16	39.523357782°N	107.656300823°W
3,896.00	41.09	101.19	3,550.90	-316.61	1,029.28	14,364,219.66	891,379.81	39.523331671°N	107.656084820°W
3,990.00	40.69	98.12	3,621.96	-326.93	1,089.93	14,364,209.33	891,440.45	39.523308259°N	107.655868911°W
4,085.00	40.52	97.81	3,694.09	-335.50	1,151.16	14,364,200.76	891,501.68	39.523289713°N	107.655651102°W
4,179.00	40.21	99.61	3,765.71	-344.72	1,211.33	14,364,191.55	891,561.86	39.523269303°N	107.655436982°W
4,273.00	39.59	101.41	3,837.83	-355.71	1,270.61	14,364,180.56	891,621.14	39.523243949°N	107.655225838°W
4,368.00	41.22	101.33	3,910.17	-367.85	1,330.98	14,364,168.42	891,681.50	39.523215535°N	107.655010723°W
4,462.00	39.90	101.11	3,981.58	-379.74	1,390.93	14,364,156.52	891,741.46	39.523187757°N	107.654797101°W
4,556.00	41.40	101.72	4,052.90	-391.86	1,450.95	14,364,144.40	891,801.48	39.523159355°N	107.654583216°W
4,650.00	39.90	101.11	4,124.21	-403.99	1,510.97	14,364,132.28	891,861.50	39.523130952°N	107.654369332°W
4,745.00	39.42	101.41	4,197.35	-415.83	1,570.44	14,364,120.44	891,920.96	39.523103288°N	107.654157446°W
4,839.00	38.50	101.19	4,270.44	-427.41	1,628.40	14,364,108.86	891,978.92	39.523076203°N	107.653950924°W
4,934.00	37.22	101.02	4,345.44	-438.64	1,685.61	14,364,097.63	892,036.13	39.523050021°N	107.653747083°W
5,028.00	35.42	101.19	4,421.18	-449.36	1,740.24	14,364,086.90	892,090.76	39.523025028°N	107.653552437°W
5,123.00	33.71	101.33	4,499.40	-459.88	1,793.10	14,364,076.38	892,143.62	39.523000437°N	107.653364092°W
5,217.00	30.10	100.62	4,579.19	-469.36	1,841.86	14,364,066.91	892,192.38	39.522978397°N	107.653190375°W
5,312.00	28.39	102.03	4,662.08	-478.45	1,887.36	14,364,057.81	892,237.89	39.522957118°N	107.653028222°W
5,406.00	26.19	102.82	4,745.61	-487.71	1,929.45	14,364,048.55	892,279.97	39.522935114°N	107.652878162°W
5,501.00	23.91	102.21	4,831.67	-496.44	1,968.72	14,364,039.83	892,319.24	39.522914355°N	107.652738165°W
5,595.00	20.61	100.49	4,918.65	-503.48	2,003.61	14,364,032.78	892,354.13	39.522897856°N	107.652613814°W
5,690.00	17.31	101.90	5,008.49	-509.44	2,033.89	14,364,026.82	892,384.41	39.522883953°N	107.652505931°W
5,784.00	15.38	99.39	5,098.69	-514.36	2,059.88	14,364,021.91	892,410.40	39.522872563°N	107.652413368°W
5,878.00	11.91	98.03	5,190.02	-517.75	2,081.78	14,364,018.52	892,432.31	39.522865035°N	107.652335402°W
5,973.00	8.31	100.71	5,283.53	-520.40	2,098.24	14,364,015.87	892,448.76	39.522859107°N	107.652276826°W
6,067.00	5.89	92.10	5,376.80	-521.84	2,109.74	14,364,014.43	892,460.26	39.522856088°N	107.652235950°W
6,162.00	3.52	78.30	5,471.48	-521.42	2,117.47	14,364,014.84	892,467.99	39.522857846°N	107.652208617°W
6,256.00	2.20	77.20	5,565.36	-520.44	2,122.05	14,364,015.83	892,472.57	39.522860919°N	107.652192477°W
6,445.00	2.11	101.11	5,754.23	-520.30	2,129.00	14,364,015.96	892,479.53	39.522861846°N	107.652167865°W
6,539.00	0.88	179.02	5,848.20	-521.36	2,130.71	14,364,014.91	892,481.24	39.522859090°N	107.652161695°W
6,634.00	0.48	241.51	5,943.20	-522.28	2,130.38	14,364,013.99	892,480.90	39.522856540°N	107.652162794°W
6,729.00	1.10	233.43	6,038.19	-523.01	2,129.30	14,364,013.25	892,479.82	39.522854442°N	107.652166551°W
6,824.00	0.31	258.12	6,133.18	-523.61	2,128.31	14,364,012.66	892,478.83	39.522852726°N	107.652169974°W
6,915.00	0.62	76.50	6,224.18	-523.54	2,128.55	14,364,012.72	892,479.07	39.522852922°N	107.652169138°W
7,009.00	0.48	53.12	6,318.18	-523.19	2,129.36	14,364,013.08	892,479.88	39.522853961°N	107.652166307°W

ARK Directional Services

Survey Report - Geographic

Company:	Antero Resources	Local Co-ordinate Reference:	Well Antero Dixon B06 (111307) - Slot B06
Project:	Dixon	TVD Reference:	KB @ 5544.00ft
Site:	Dixon B	MD Reference:	KB @ 5544.00ft
Well:	Antero Dixon B06 (111307)	North Reference:	Grid
Wellbore:	Dixon B06	Survey Calculation Method:	Minimum Curvature
Design:	Dixon B06	Database:	EDM5000

Survey									
Measured Depth (ft)	Inclination (°)	Azimuth (°)	Vertical Depth (ft)	+N/-S (ft)	+E/-W (ft)	Map Northing (usft)	Map Easting (usft)	Latitude	Longitude
7,104.00	0.31	159.11	6,413.17	-523.19	2,129.77	14,364,013.08	892,480.29	39.522853991°N	107.652164855°W
7,198.00	0.62	196.73	6,507.17	-523.92	2,129.71	14,364,012.35	892,480.23	39.522851998°N	107.652164977°W
7,293.00	1.01	223.10	6,602.16	-525.02	2,128.99	14,364,011.25	892,479.51	39.522848912°N	107.652167412°W
7,387.00	1.01	158.41	6,696.15	-526.39	2,128.73	14,364,009.87	892,479.25	39.522845118°N	107.652168194°W
7,482.00	0.79	93.72	6,791.14	-527.22	2,129.69	14,364,009.05	892,480.21	39.522842943°N	107.652164702°W
7,576.00	0.79	112.09	6,885.13	-527.50	2,130.94	14,364,008.77	892,481.46	39.522842260°N	107.652160254°W
7,671.00	0.31	207.41	6,980.13	-527.98	2,131.43	14,364,008.29	892,481.95	39.522840998°N	107.652158474°W
7,765.00	1.32	265.33	7,074.12	-528.29	2,130.23	14,364,007.98	892,480.75	39.522840040°N	107.652162679°W
7,859.00	1.71	258.83	7,168.09	-528.65	2,127.78	14,364,007.62	892,478.30	39.522838855°N	107.652171338°W
7,953.00	1.80	245.20	7,262.04	-529.54	2,125.06	14,364,006.73	892,475.58	39.522836191°N	107.652180866°W
8,048.00	1.71	233.60	7,357.00	-531.01	2,122.57	14,364,005.26	892,473.09	39.522831964°N	107.652189553°W
8,096.00	1.32	226.13	7,404.98	-531.82	2,121.59	14,364,004.45	892,472.11	39.522829668°N	107.652192922°W
8,146.00	1.32	226.13	7,454.97	-532.61	2,120.76	14,364,003.65	892,471.28	39.522827411°N	107.652195780°W
Proj to TD at 8146 MD/7455 TVD - BH B06									

Survey Annotations				
Measured Depth (ft)	Vertical Depth (ft)	Local Coordinates		Comment
		+N/-S (ft)	+E/-W (ft)	
8,146.00	7,454.97	-532.61	2,120.76	Proj to TD at 8146 MD/7455 TVD

Checked By: _____	Approved By: _____	Date: _____
-------------------	--------------------	-------------