

Downhole Schematic for JILLSON 4-8-22



Project : DJ Basin

API # : 05123325650000

Surface Location : SESW Sec 22 T2N - R68W 6th PM

Area : Wattenberg

County :

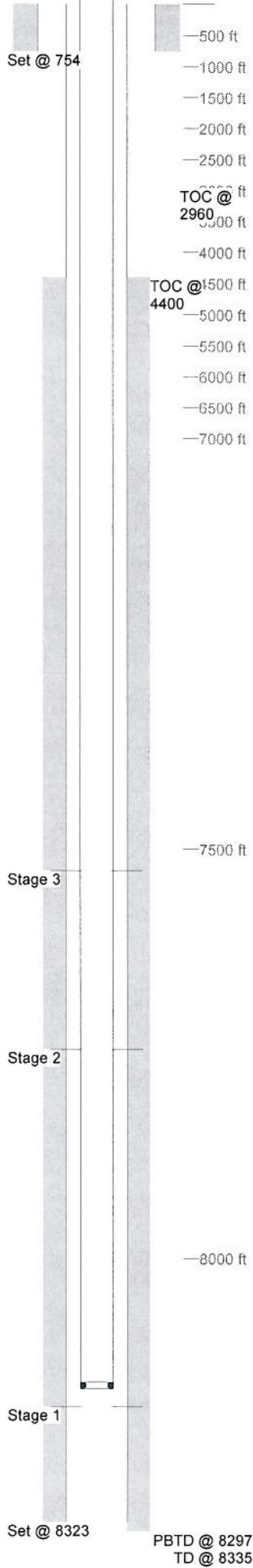
BHL : SESW-22-2N-68 W 6th PM

As Of : 03/08/2012

GL : 4968.0 ft

KB to GL : 13.0 ft

KB : 4981.0 ft



Casing Details		Hole	Casing	Mass	Set At	Length	Thread	Grade	Description
Section Surface		12.250	8.625	0	754	1		J55	GS
			8.625	24	753	41		J55	SJ / BAFFLE
				0	712	699			CSG
				0	13	13			LJ
Production	7.875		4.5	0	8,323	1		L-80	Guide Shoe
				11.6	8,322	23			Shoe Jt
				0	8,299	1			Float Collar
			4.5	11.6	8,298	863		L-80	Casing
			4.5	11.6	7,434	23		L-80	Marker Jt
			4.5	11.6	7,412	7,399		L-80	Casing
			4.5	11.6	13	13		L-80	Landing Jt

Cement Details		Top	Density	Blend / Additives
Section Surface	Sequence Lead	0	14.5	TYPE III / + .08 lbs/sk Static Free; 1.5% Calcium Chloride; 15 lbs/sk Cello Flake
Production	Lead	4,400	12.5	Premium Lite Cmt / +0.1% R-3 + 0.2% CD-32 +0.7% FL-52 + 0.2% ASA-301 + 6% Bentonite + 3 lbs/sx CSE-2
	Tail	6,950	13.5	(50:50 Poz,Fly Ash / Class G Cmt + 0.1% R-3 + 0.6% FL-52 + 3% Bentonite + 0.1% SM + 20% Silica Flour

Tubing and Downhole Equipment			
O.D.	Length	Depth	Description
0.000	13.00	13.00	KB
2.375	8,138.12	8,151.12	248 JTS 4.7# J55 EUE 8RD
2.375	1.90	8,153.02	SN & Partial Pump Out Sub

Perforations									
Stage 1						12/13/2011	7,744	7,765	42
	Date	From	To	Shots	Stage 3				
	12/06/2011	8,181	8,203	44	Date	From	To	Shots	
Stage 2					12/13/2011	7,526	7,546	80	
	Date	From	To	Shots					

Frac Summary
 Stage 1 : 8,181 - 8,203, 44 - 0.420" shots, 3907 bbls of Hybrid pHaserFrac, 250460 lbs of 20/40 Preferred
 Rock Report Date: 12/14/2011
 Stage 2 : 7,744 - 7,765, 42 - 0.420" shots, 2776 bbls of Hybrid pHaserFrac, 250000 lbs of 20/40 Sand
 Report Date: 12/16/2011
 Stage 3 : 7,526 - 7,546, 80 - 0.420" shots, 3319 bbls of Hybrid pHaserFrac, 250000 lbs of 20/40 Sand
 Report Date: 12/16/2011