
WILLIAMS PRODUCTION RMT INC - EBUS

**GM 23-27
GRAND VALLEY
Garfield County , Colorado**

Cement Surface Casing
23-Apr-2011

Post Job Report

The Road to Excellence Starts with Safety

Sold To #: 300721		Ship To #: 2850110		Quote #:		Sales Order #: 8123429	
Customer: WILLIAMS PRODUCTION RMT INC - EBUS				Customer Rep: Oaks, Rick			
Well Name: GM			Well #: 23-27		API/UWI #: 05-045-19730		
Field: GRAND VALLEY		City (SAP): PARACHUTE		County/Parish: Garfield		State: Colorado	
Lat: N 39.491 deg. OR N 39 deg. 29 min. 27.816 secs.				Long: W 108.095 deg. OR W -109 deg. 54 min. 17.298 secs.			
Contractor: H&P 278			Rig/Platform Name/Num: H&P 278				
Job Purpose: Cement Surface Casing							
Well Type: Development Well			Job Type: Cement Surface Casing				
Sales Person: KOHL, KYLE			Srvc Supervisor: TRIPLETT, MICHEAL			MBU ID Emp #: 447908	

Job Personnel

HES Emp Name	Exp Hrs	Emp #	HES Emp Name	Exp Hrs	Emp #	HES Emp Name	Exp Hrs	Emp #
DEUSSEN, EDWARD Eric	8	485182	STILLSON, ERIC W	8	393789	TRIPLETT, MICHEAL Anthony	8	447908
WEAVER, CARLTON Russell	8	457698						

Equipment

HES Unit #	Distance-1 way	HES Unit #	Distance-1 way	HES Unit #	Distance-1 way	HES Unit #	Distance-1 way
10248065	60 mile	10567589C	60 mile	10867423	60 mile	10897887	60 mile
10951246	60 mile	10995027	60 mile				

Job Hours

Date	On Location Hours	Operating Hours	Date	On Location Hours	Operating Hours	Date	On Location Hours	Operating Hours
04/22/2011	3	0	04/23/2011	5	1			

TOTAL	Total is the sum of each column separately							
--------------	--	--	--	--	--	--	--	--

Job

Formation Name	Top	Bottom	Called Out	Date	Time	Time Zone
Formation Depth (MD)			On Location	22 - Apr - 2011	18:00	MST
Form Type		BHST	Job Started	22 - Apr - 2011	21:00	MST
Job depth MD	1495. ft	Job Depth TVD	Job Completed	23 - Apr - 2011	03:10	MST
Water Depth		Wk Ht Above Floor	Departed Loc	23 - Apr - 2011	04:10	MST
Perforation Depth (MD)	From	To		23 - Apr - 2011	05:00	MST

Well Data

Description	New / Used	Max pressure psig	Size in	ID in	Weight lbm/ft	Thread	Grade	Top MD ft	Bottom MD ft	Top TVD ft	Bottom TVD ft
-------------	------------	-------------------	---------	-------	---------------	--------	-------	-----------	--------------	------------	---------------

Sales/Rental/3rd Party (HES)

Description	Qty	Qty uom	Depth	Supplier
PLUG,CMTG,TOP,9 5/8,HWE,8.16 MIN/9.06 MA	1	EA		

Tools and Accessories

Type	Size	Qty	Make	Depth	Type	Size	Qty	Make	Depth	Type	Size	Qty	Make
Guide Shoe					Packer					Top Plug			
Float Shoe					Bridge Plug					Bottom Plug			
Float Collar					Retainer					SSR plug set			
Insert Float										Plug Container			
Stage Tool										Centralizers			

Miscellaneous Materials

Gelling Agt	Conc	Surfactant	Conc	Acid Type	Qty	Conc	%
Treatment Fld	Conc	Inhibitor	Conc	Sand Type	Size		Qty

Fluid Data

Stage/Plug #: 1									
Fluid #	Stage Type	Fluid Name	Qty	Qty uom	Mixing Density lbm/gal	Yield ft3/sk	Mix Fluid Gal/sk	Rate bbl/min	Total Mix Fluid Gal/sk

Stage/Plug #: 1										
Fluid #	Stage Type	Fluid Name	Qty	Qty uom	Mixing Density lbm/gal	Yield ft ³ /sk	Mix Fluid Gal/sk	Rate bbl/min	Total Mix Fluid Gal/sk	
1	Water Spacer		20.00	bbl	8.4	.0	.0	.0		
2	VersaCem Lead Cement	VERSACEM (TM) SYSTEM (452010)	195.0	sacks	12.3	2.38	13.75		13.75	
	13.75 Gal	FRESH WATER								
3	VersaCem Tail Cement	VERSACEM (TM) SYSTEM (452010)	160.0	sacks	12.8	2.11	11.75		11.75	
	11.75 Gal	FRESH WATER								
4	Displacement Fluid		110.00	bbl	8.4	.0	.0	.0		
Calculated Values		Pressures		Volumes						
Displacement	110.7	Shut In: Instant		Lost Returns	0	Cement Slurry	143	Pad		
Top Of Cement	SURFACE	5 Min		Cement Returns	30	Actual Displacement	110.7	Treatment		
Frac Gradient		15 Min		Spacers	20	Load and Breakdown		Total Job	274	
Rates										
Circulating	10	Mixing	8	Displacement	10	Avg. Job	9			
Cement Left In Pipe	Amount	44.97 ft	Reason	Shoe Joint						
Frac Ring # 1 @	ID	Frac ring # 2 @	ID	Frac Ring # 3 @	ID	Frac Ring # 4 @	ID			
The Information Stated Herein Is Correct				Customer Representative Signature						

The Road to Excellence Starts with Safety

Sold To #: 300721		Ship To #: 2850110		Quote #:		Sales Order #: 8123429	
Customer: WILLIAMS PRODUCTION RMT INC - EBUS				Customer Rep: Oaks, Rick			
Well Name: GM			Well #: 23-27			API/UWI #: 05-045-19730	
Field: GRAND VALLEY		City (SAP): PARACHUTE		County/Parish: Garfield		State: Colorado	
Legal Description:							
Lat: N 39.491 deg. OR N 39 deg. 29 min. 27.816 secs.				Long: W 108.095 deg. OR W -109 deg. 54 min. 17.298 secs.			
Contractor: H&P 278			Rig/Platform Name/Num: H&P 278				
Job Purpose: Cement Surface Casing						Ticket Amount:	
Well Type: Development Well			Job Type: Cement Surface Casing				
Sales Person: KOHL, KYLE			Srvc Supervisor: TRIPLETT, MICHEAL			MBU ID Emp #: 447908	

Activity Description	Date/Time	Cht #	Rate bbl/min	Volume bbl		Pressure psig		Comments
				Stage	Total	Tubing	Casing	
Call Out	04/22/2011 18:00							
Pre-Convoy Safety Meeting	04/22/2011 19:30							
Crew Leave Yard	04/22/2011 19:40							
Arrive At Loc	04/22/2011 21:00							GET NUMBERS AND VERIFY CEMENT WITH COMPANY MAN
Assessment Of Location Safety Meeting	04/22/2011 21:10							
Other	04/22/2011 21:15							SPOT EQUIPMENT, 1 RCM PUMP TRUCK, 1 660, 1 BODY LOAD
Pre-Rig Up Safety Meeting	04/22/2011 21:25							GO OVER JSA WITH CREW AND HAVE SIGN
Rig-Up Equipment	04/22/2011 21:30							
Pre-Job Safety Meeting	04/23/2011 03:00							
Start Job	04/23/2011 03:09							TD:1495, TP:1476.40, SJ:44.97, MW:10.1, CASING: 9.625 36#, OH:13.5"
Test Lines	04/23/2011 03:11						3000.0	PRESSURE TEST PUMPS AND LINES, HOLD FOR TWO MINUTES NO LEAKS
Pump Spacer 1	04/23/2011 03:15			20			400.0	FRESH WATER
Pump Lead Cement	04/23/2011 03:24		8	82.7			425.0	195 SACKS MIXED @ 12.3PPG, 2.38 YIELD, 13.75GAL/SACK
Activity Description	Date/Time	Cht	Rate bbl/min	Volume bbl		Pressure psig		Comments

Sold To # : 300721

Ship To # :2850110

Quote # :

Sales Order # :

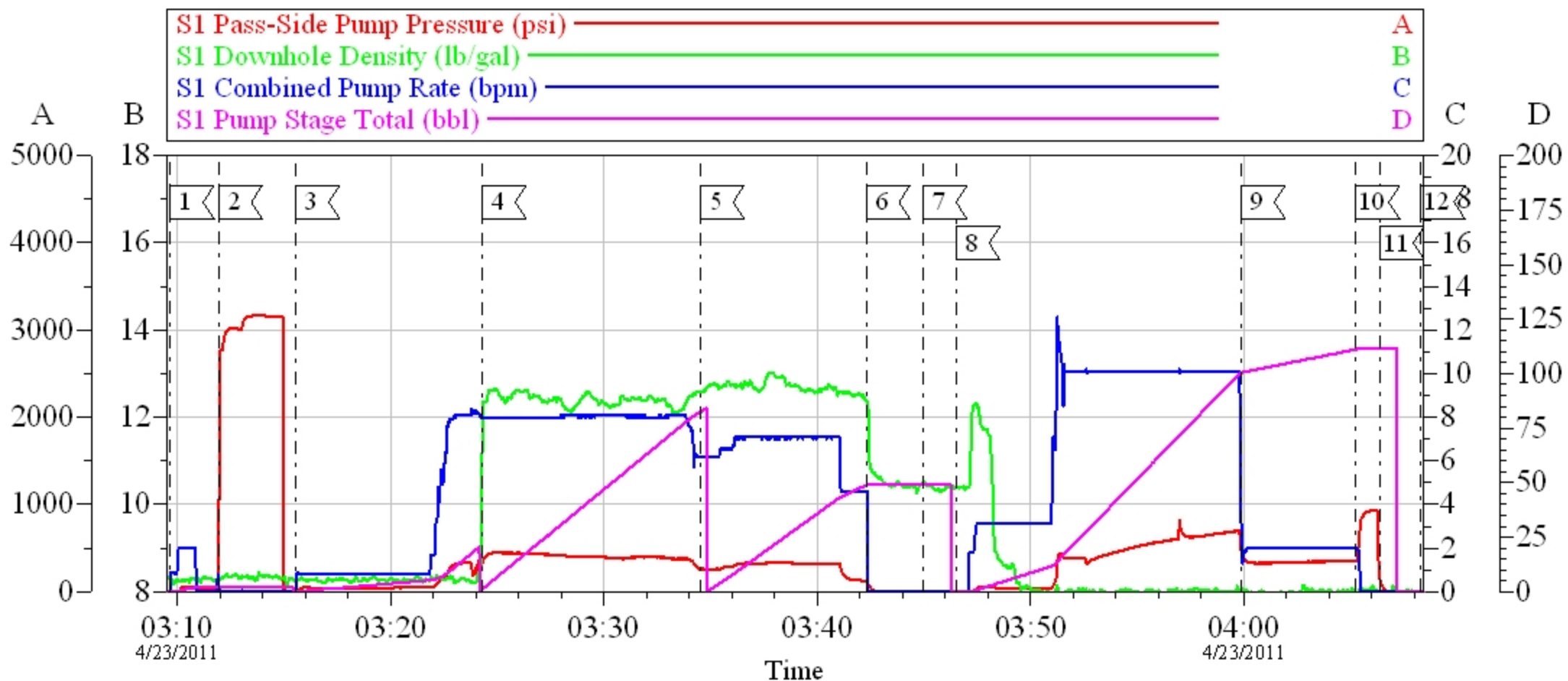
8123429

SUMMIT Version: 7.20.130

Saturday, April 23, 2011 04:31:00

		#		Stage	Total	Tubing	Casing	
Pump Tail Cement	04/23/2011 03:34		8	60.1			380.0	160 SACKS MIXED @ 12.8PPG, 2.11 YIELD, 11.75GAL/SACK, HAD TO SLOW RATE DUE TO NOT GETTING GOOD CEMENT FLOW TO TRUCK
Shutdown	04/23/2011 03:42							
Drop Top Plug	04/23/2011 03:44							VERIFY PLUG LEFT, COMPANY REP VERIFIED AS WELL, WASHED UP ON TOP OF PLUG
Pump Displacement	04/23/2011 03:45		10	110.7			685.0	FRESHWATER
Slow Rate	04/23/2011 03:59		2	100.7			400.0	SLOW LAST TEN BBLs PRIOR TO BUMPONG PLUG
Bump Plug	04/23/2011 04:05						385.0	BUMP PLUG AND WENT 500PSI OVER TO 885 PSI
Check Floats	04/23/2011 04:06							FLOATS HELD
End Job	04/23/2011 04:08							GOOD CIRCULATION THROUGHOUT JOB, GOT 30BBLs OF CEMENT BACK TO SURFACE, USED 100#'S OF SUGAR.
Post-Job Safety Meeting (Pre Rig-Down)	04/23/2011 04:10							
Rig-Down Equipment	04/23/2011 04:15							
Pre-Convoy Safety Meeting	04/23/2011 04:55							
Crew Leave Location	04/23/2011 05:00							THANKS FOR USING HALLIBURTON MIKE TRIPLETT AND CREW

WILLIAMS SURFACE GM 27-23



Local Event Log

1 START JOB	03:09:40	2 PRESSURE TEST	03:11:56
3 START FRESHWATER SPACER	03:15:33	4 START LEAD CEMENT	03:24:18
5 START TAIL CEMENT	03:34:31	6 SHUTDOWN	03:42:18
7 DROP PLUG	03:44:58	8 START DISPLACEMENT	03:46:31
9 SLOWRATE	03:59:53	10 BUMP PLUG	04:05:15
11 CHECK FLOATS	04:06:23	12 END JOB	04:08:18

Customer: WILLIAMS
Well Description: GM 27-23
ADC USED: YES

Job Date: 23-Apr-2011
JOB TYPE: SURFACE
SERVICE SUPERVISOR: MIKE TRIPLETT

Sales Order #: 8123429
COMPANY REP: RICK OAKS
ELITE/OPERATOR: 3/ED DEUSSEN

OptiCern v6.4.9
23-Apr-11 04:19