

---

**BILL BARRETT CORPORATION E-BILL**

---

**GGU MILLER 32D-31-691  
MAMM CREEK  
Garfield County , Colorado**

**Cement Surface Casing**  
01-Mar-2012

**Post Job Summary**

*The Road to Excellence Starts with Safety*

<b>Sold To #:</b> 343492	<b>Ship To #:</b> 2912644	<b>Quote #:</b>	<b>Sales Order #:</b> 9326682
<b>Customer:</b> BILL BARRETT CORPORATION E-BILL		<b>Customer Rep:</b> Lauer, Casey	
<b>Well Name:</b> GGU MILLER		<b>Well #:</b> 32D-31-691	<b>API/UWI #:</b> 05-045-21097
<b>Field:</b>	<b>City (SAP):</b> SILT	<b>County/Parish:</b> Garfield	<b>State:</b> Colorado
<b>Lat:</b> N 39.487 deg. OR N 39 deg. 29 min. 12.8 secs.		<b>Long:</b> W 107.591 deg. OR W -108 deg. 24 min. 32.137 secs.	
<b>Contractor:</b> ProPetro Services Inc.		<b>Rig/Platform Name/Num:</b> ProPetro	
<b>Job Purpose:</b> Cement Surface Casing			
<b>Well Type:</b> Development Well		<b>Job Type:</b> Cement Surface Casing	
<b>Sales Person:</b> METLI, MARSHALL		<b>Srvc Supervisor:</b> MAGERS, MICHAEL	<b>MBU ID Emp #:</b> 339439

**Job Personnel**

HES Emp Name	Exp Hrs	Emp #	HES Emp Name	Exp Hrs	Emp #	HES Emp Name	Exp Hrs	Emp #
ED DEUSSEN	4,5	485182	JENSEN, JESSE Robert	4.5	478774	MAGERS, MICHAEL Gerard	4.5	339439

**Equipment**

HES Unit #	Distance-1 way	HES Unit #	Distance-1 way	HES Unit #	Distance-1 way	HES Unit #	Distance-1 way
10297346	120 mile	10871245	120 mile	11071559	120 mile	11259886	120 mile
11360881	120 mile						

**Job Hours**

Date	On Location Hours	Operating Hours	Date	On Location Hours	Operating Hours	Date	On Location Hours	Operating Hours
03/01/2012	4.5	1						
<b>TOTAL</b>			<i>Total is the sum of each column separately</i>					

**Job**

**Job Times**

Formation Name	Top	Bottom	Called Out	Date	Time	Time Zone
<b>Form Type</b>		BHST	<b>On Location</b>	01 - Mar - 2012	14:30	MST
<b>Job depth MD</b>	760. ft	<b>Job Depth TVD</b>	760. ft	<b>Job Started</b>	01 - Mar - 2012	17:03
<b>Water Depth</b>		<b>Wk Ht Above Floor</b>	2. ft	<b>Job Completed</b>	01 - Mar - 2012	18:06
<b>Perforation Depth (MD)</b>	<i>From</i>	<i>To</i>	<b>Departed Loc</b>			

**Well Data**

Description	New / Used	Max pressure psig	Size in	ID in	Weight lbm/ft	Thread	Grade	Top MD ft	Bottom MD ft	Top TVD ft	Bottom TVD ft
-------------	------------	-------------------	---------	-------	---------------	--------	-------	-----------	--------------	------------	---------------

**Sales/Rental/3<sup>rd</sup> Party (HES)**

Description	Qty	Qty uom	Depth	Supplier
PLUG,CMTG, TOP, 9 5/8, HWE, 8.16 MIN/9.06 MA	1	EA		

**Tools and Accessories**

Type	Size	Qty	Make	Depth	Type	Size	Qty	Make	Depth	Type	Size	Qty	Make
Guide Shoe					Packer					Top Plug	9.625	1	HES
Float Shoe					Bridge Plug					Bottom Plug			
Float Collar					Retainer					SSR plug set			
Insert Float										Plug Container	SWAGE		
Stage Tool										Centralizers			

**Miscellaneous Materials**

Gelling Agt	Conc	Surfactant	Conc	Acid Type	Qty	Conc	%
Treatment Fld	Conc	Inhibitor	Conc	Sand Type	Size	Qty	

**Fluid Data**

Stage/Plug #: 1													
Fluid #	Stage Type	Fluid Name	Qty	Qty uom	Mixing Density lbm/gal	Yield ft <sup>3</sup> /sk	Mix Fluid Gal/sk	Rate bbl/min	Total Mix Fluid Gal/sk				

Stage/Plug #: 1

Stage/Plug #: 1									
Fluid #	Stage Type	Fluid Name	Qty	Qty uom	Mixing Density lbm/gal	Yield ft <sup>3</sup> /sk	Mix Fluid Gal/sk	Rate bbl/min	Total Mix Fluid Gal/sk
1	Water Spacer		20	bbl	8.34	.0	.0	.0	
2	VersaCem Lead Cement	VERSACEM (TM) SYSTEM (452010)	50.9	sacks	12.3	2.38	13.77		13.77
	13.77 Gal	FRESH WATER							
3	SwiftCem Tail Cement	SWIFTCEM (TM) SYSTEM (452990)	30.6	sacks	14.2	1.43	6.85		6.85
	6.85 Gal	FRESH WATER							
4	Fresh Water Displacement		53.8	bbl	8.34			.0	
Calculated Values		Pressures			Volumes				
Displacement	53.8	Shut In: Instant		Lost Returns	0	Cement Slurry	81.5	Pad	
Top Of Cement	SURFACE	5 Min		Cement Returns	25	Actual Displacement	53.8	Treatment	
Frac Gradient		15 Min		Spacers	20	Load and Breakdown		Total Job	155
Rates									
Circulating	NONE	Mixing	4	Displacement	4/2	Avg. Job	4		
Cement Left In Pipe	Amount	44.9ft	Reason	Shoe Joint					
Frac Ring # 1 @	ID	Frac ring # 2 @	ID	Frac Ring # 3 @	ID	Frac Ring # 4 @	ID		
The Information Stated Herein Is Correct				Customer Representative Signature					

*The Road to Excellence Starts with Safety*

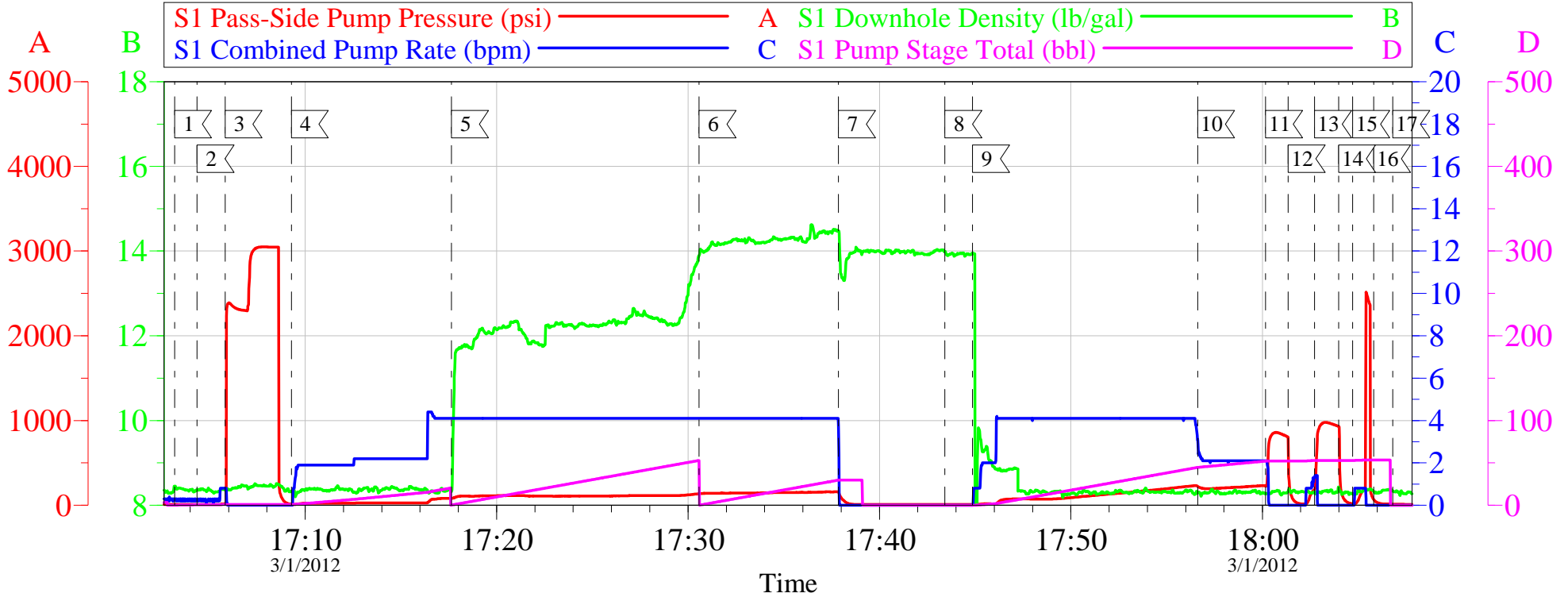
<b>Sold To #:</b> 343492	<b>Ship To #:</b> 2912644	<b>Quote #:</b>	<b>Sales Order #:</b> 9326682
<b>Customer:</b> BILL BARRETT CORPORATION E-BILL		<b>Customer Rep:</b> Lauer, Casey	
<b>Well Name:</b> GGU MILLER		<b>Well #:</b> 32D-31-691	<b>API/UWI #:</b> 05-045-21097
<b>Field:</b>	<b>City (SAP):</b> SILT	<b>County/Parish:</b> Garfield	<b>State:</b> Colorado
<b>Legal Description:</b>			
<b>Lat:</b> N 39.487 deg. OR N 39 deg. 29 min. 12.8 secs.		<b>Long:</b> W 107.591 deg. OR W -108 deg. 24 min. 32.137 secs.	
<b>Contractor:</b> ProPetro Services Inc.		<b>Rig/Platform Name/Num:</b> ProPetro	
<b>Job Purpose:</b> Cement Surface Casing			<b>Ticket Amount:</b>
<b>Well Type:</b> Development Well		<b>Job Type:</b> Cement Surface Casing	
<b>Sales Person:</b> METLI, MARSHALL		<b>Srvc Supervisor:</b> MAGERS, MICHAEL	<b>MBU ID Emp #:</b> 339439

Activity Description	Date/Time	Cht #	Rate bbl/min	Volume bbl		Pressure psig		Comments
				Stage	Total	Tubing	Casing	
Call Out	03/01/2012 10:00							
Pre-Convoy Safety Meeting	03/01/2012 12:15							WITH ALL HES PERSONNEL
Crew Leave Yard	03/01/2012 12:30							
Assessment Of Location Safety Meeting	03/01/2012 14:15							WITH ALL HES PERSONNEL
Arrive At Loc	03/01/2012 14:30							RIG WAS STILL RUNIING CASING WHEN HES ARRIVED
Pre-Rig Up Safety Meeting	03/01/2012 16:20							WITH ALL HES PERSONNEL
Rig-Up Equipment	03/01/2012 16:30							1 PICKUP 1 ELITE 1 BULK TRUCK
Pre-Job Safety Meeting	03/01/2012 16:50							WITH ALL PERSONNEL ON LOCATION
Start Job	03/01/2012 17:00							TD-760 TP-740.8 SJ-44.9 CSG- 9 5/8 36# J-55 OH-12 1/4"
Other	03/01/2012 17:04		2	2			6.0	FILL LINES WITH FRESH WATER
Test Lines	03/01/2012 17:05		0.5	0.5			3055.0	PSI TEST OK
Pump Spacer 1	03/01/2012 17:09		4	20			80.0	FRESH WATER
Pump Lead Cement	03/01/2012 17:17		4	50.9			138.0	VERSACEM 120 SKS 12.3 PPG 2.38 FT3/SK 13.77 GAL/SK
Pump Tail Cement	03/01/2012 17:30		4	30.6			147.0	SWIFTCEM 120 SKS 14.2 PPG 1.43 FT3/SK 6.85 GAL/SK
Shutdown	03/01/2012 17:37							
Drop Top Plug	03/01/2012 17:43							PLUG LAUNCHED

Activity Description	Date/Time	Cht #	Rate bbl/min	Volume bbl		Pressure psig		Comments
				Stage	Total	Tubing	Casing	
Pump Displacement	03/01/2012 17:44		4	53.8			207.0	FRESH WATER
Slow Rate	03/01/2012 17:56		2	44			190.0	SLOW RATE 10 BBLS PRIOR TO CALCULATED DISPLACEMENT
Bump Plug	03/01/2012 18:00		2	53.8			212.0	PLUG BUMPED
Check Floats	03/01/2012 18:01			53.8			800.0	FLOATS DID NOT HOLD
Bump Plug	03/01/2012 18:02		1	1			900.0	PLUG REBUMPED
Check Floats	03/01/2012 18:03			1				FLOATS DID NOT HOLD
Bump Plug	03/01/2012 18:04		1	1			200.0	PUMP PLUG
Other	03/01/2012 18:05							LOCK IN 2 INCH LO- TORC VAULE AT 200 PSI
End Job	03/01/2012 18:06							RELEASE PRESSURE/RIG DOWN/WAIT FOR NEXT JOB
Comment	03/01/2012 18:38							THANK YOU FOR USING HALLIBURTON CEMENT DEPARTMENT. MIKE MAGERS AND CREW.

# BILL BARRETT GGU MILLER 32D-31-691

## 9.625 SURFACE



### Local Event Log

1	START JOB	17:03:11	2	FILL LINES	17:04:21
3	PRESSURE TEST	17:05:49	4	PUMP SPACER	17:09:17
5	PUMP LEAD CEMENT	17:17:39	6	PUMP TAIL CEMENT	17:30:35
7	SHUT DOWN	17:37:52	8	DROP PLUG	17:43:25
9	PUMP FRSH WTR DISPLACEMENT	17:44:52	10	SLOW RATE	17:56:37
11	BUMP PLUG	18:00:10	12	CHECK FLOATS	18:01:21
13	REBUMP PLUG	18:02:44	14	CHECK FLOATS	18:03:59
15	REBUMP PLUG	18:04:43	16	LOCK-IN PRESSURE	18:05:49
17	END JOB	18:06:49			

Customer: BILL BARRETT PRO PETRO  
 Well Description: GGU MILLER 32D-31-691  
 Customer Rep: CASEY LAUER

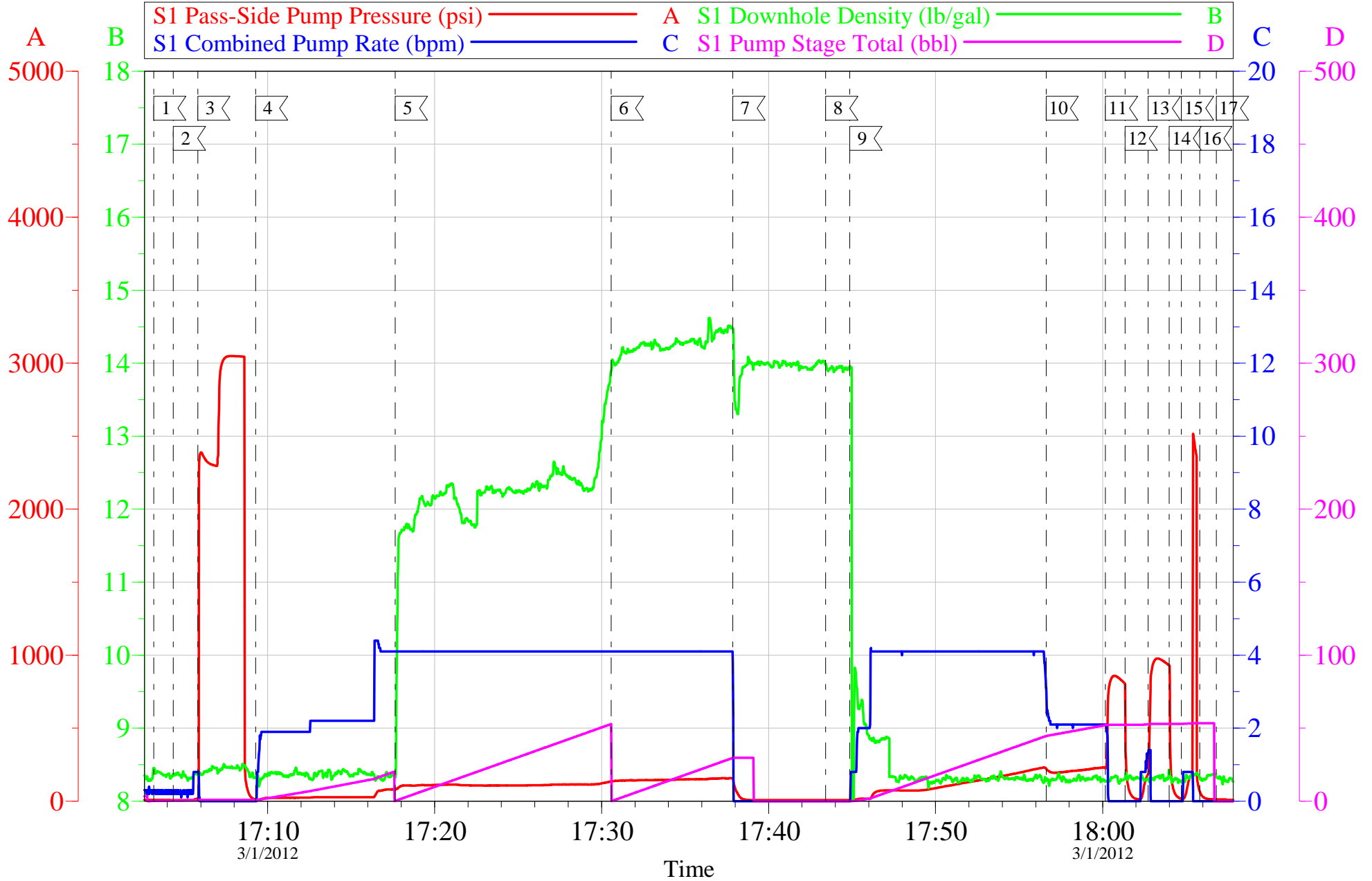
Job Date: 01-Mar-2012  
 Job Type: SURFACE  
 Cement Supervisor: MIKE MAGERS

Sales Order #: 9326682  
 ADC Used: YES  
 Elite #8 JESSIE JENSEN

OptiCem v6.4.10  
 01-Mar-12 18:22

# BILL BARRETT GGU MILLER 32D-31-691

## 9.625 SURFACE



Customer: BILL BARRETT PRO PETRO	Job Date: 01-Mar-2012	Sales Order #: 9326682
Well Description: GGU MILLER 32D-31-691	Job Type: SURFACE	ADC Used: YES
Customer Rep: CASEY LAUER	Cement Supervisor: MIKE MAGERS	Elite #8 JESSIE JENSEN

<b>Sales Order #:</b> 9326682	<b>Line Item:</b> 10	<b>Survey Conducted Date:</b> 3/1/2012
<b>Customer:</b> BILL BARRETT CORPORATION E-BILL		<b>Job Type (BOM):</b> CMT SURFACE CASING BOM
<b>Customer Representative:</b> CASEY LAUER		<b>API / UWI: (leave blank if unknown)</b> 05-045-21097
<b>Well Name:</b> GGU MILLER		<b>Well Number:</b> 32D-31-691
<b>Well Type:</b> Development Well	<b>Well Country:</b> United States of America	
<b>H2S Present:</b> No	<b>Well State:</b> Colorado	<b>Well County:</b> Garfield

Dear Customer,

We hope that you were satisfied with the service quality of this job performed by Halliburton. It is the aim of our management and service personnel to deliver equipment and service of a standard unmatched in the service sector of the energy industry.

Please take the time to let us know if our performance met with your satisfaction. Please be as critical as possible to ensure we constantly improve our service. Your comments are of great value to us and are intended for the exclusive use of Halliburton.

### CUSTOMER SATISFACTION SURVEY

CATEGORY	CUSTOMER SATISFACTION RESPONSE	
Survey Conducted Date	The date the survey was conducted	3/1/2012
Survey Interviewer	The survey interviewer is the person who initiated the survey.	MICHAEL MAGERS (HX13672)
Customer Participation	Did the customer participate in this survey? (Y/N)	Yes
Customer Representative	Enter the Customer representative name	CASEY LAUER
HSE	Was our HSE performance satisfactory? Circle Y or N	Yes
Equipment	Were you satisfied with our Equipment? Circle Y or N	Yes
Personnel	Were you satisfied with our people? Circle Y or N	Yes
Customer Comment	Customer's Comment	

<b>CUSTOMER SIGNATURE</b>
---------------------------

<b>Sales Order #:</b> 9326682	<b>Line Item:</b> 10	<b>Survey Conducted Date:</b> 3/1/2012
<b>Customer:</b> BILL BARRETT CORPORATION E-BILL		<b>Job Type (BOM):</b> CMT SURFACE CASING BOM
<b>Customer Representative:</b> CASEY LAUER		<b>API / UWI: (leave blank if unknown)</b> 05-045-21097
<b>Well Name:</b> GGU MILLER		<b>Well Number:</b> 32D-31-691
<b>Well Type:</b> Development Well	<b>Well Country:</b> United States of America	
<b>H2S Present:</b> No	<b>Well State:</b> Colorado	<b>Well County:</b> Garfield

### KEY PERFORMANCE INDICATORS

General	
<b>Survey Conducted Date</b>	3/1/2012
The date the survey was conducted	

Cementing KPI Survey	
<b>Type of Job</b>	0
Select the type of job. (Cementing or Non-Cementing)	
<b>Select the Maximum Deviation range for this Job</b>	Vertical
What is the highest deviation for the job you just completed? This may not be the maximum well deviation.	
<b>Total Operating Time (hours)</b>	2
Total Operating Hours Including Rig-up, Pumping, Rig-down. Enter in decimal format.	
<b>HSE Incident, Accident, Injury</b>	No
HSE Incident, Accident, Injury. This should be recordable incidents only.	
<b>Was the job purpose achieved?</b>	Yes
Was the job delivered correctly as per customer agreed design?	
<b>Operating Hours (Pumping Hours)</b>	1
Total number of hours pumping fluid on this job. Enter in decimal format.	
<b>Customer Non-Productive Rig Time (hrs)</b>	0
Lost time due to Halliburton in the start, execution, or completion of an ordered service or product, or delays in a follow-on service. Enter in decimal format. 0 if none.	
<b>Type of Rig Classification Job Was Performed</b>	Drilling Rig (Portable)
Type Of Rig (classification) Job Was Performed On	
<b>Number Of JSAs Performed</b>	4
Number Of Jsas Performed	
<b>Number of Unplanned Shutdowns</b>	0
Unplanned shutdown is when injection stops for any period of time.	
<b>Was this a Primary Cement Job (Yes / No)</b>	Yes

<b>Sales Order #:</b> 9326682	<b>Line Item:</b> 10	<b>Survey Conducted Date:</b> 3/1/2012
<b>Customer:</b> BILL BARRETT CORPORATION E-BILL		<b>Job Type (BOM):</b> CMT SURFACE CASING BOM
<b>Customer Representative:</b> CASEY LAUER		<b>API / UWI: (leave blank if unknown)</b> 05-045-21097
<b>Well Name:</b> GGU MILLER		<b>Well Number:</b> 32D-31-691
<b>Well Type:</b> Development Well	<b>Well Country:</b> United States of America	
<b>H2S Present:</b> No	<b>Well State:</b> Colorado	<b>Well County:</b> Garfield

Primary Cement Job= Casing job, Liner job, or Tie-back job.	
<b>Did We Run Wiper Plugs?</b> Did We Run Top And Bottom Casing Wiper Plugs?	Top
<b>Mixing Density of Job Stayed in Designed Density Range (0-100%)</b> Density Range defined as +/- .20 ppg. Calculation: Total BBLs cement mixed at designed density divided by total BBLs of cement multiplied by 100	92
<b>Was Automated Density Control Used?</b> Was Automated Density Control (ADC) Used ?	Yes
<b>Pump Rate (percent) of Job Stayed At Designed Pump Rate</b> Pump Rate range defined as +/- 1bbl/min. Calculation: Total BBLs of fluid pumped at the designed rate divided by Total BBLs of fluid pumped, multiplied by 100	95
<b>Nbr of Remedial Sqz Jobs Rqd - Competition</b> Number Of Remedial Squeeze Jobs Required After Primary Job Performed By Competition	0
<b>Nbr of Remedial Plug Jobs Rqd - HES</b> Number Of Remedial Plug Jobs Needed After Primary Plug Pumped By HES	0
<b>Nbr of Remedial Sqz Jobs Rqd - HES</b> Number Of Remedial Squeeze Jobs Required After Primary Job Performed By HES	0