
BILL BARRETT CORPORATION E-BILL

**GGU MILLER 32A-31-691
MAMM CREEK
Garfield County , Colorado**

Cement Surface Casing
02-Mar-2012

Post Job Summary

The Road to Excellence Starts with Safety

Sold To #: 343492	Ship To #: 2912645	Quote #:	Sales Order #: 9326665
Customer: BILL BARRETT CORPORATION E-BILL		Customer Rep: Lauer, Casey	
Well Name: GGU MILLER		Well #: 32A-31-691	API/UWI #: 05-045-21095
Field:	City (SAP): SILT	County/Parish: Garfield	State: Colorado
Lat: N 39.487 deg. OR N 39 deg. 29 min. 12.563 secs.		Long: W 107.591 deg. OR W -108 deg. 24 min. 32.141 secs.	
Contractor: ProPetro Services Inc.		Rig/Platform Name/Num: ProPetro	
Job Purpose: Cement Surface Casing			
Well Type: Development Well		Job Type: Cement Surface Casing	
Sales Person: METLI, MARSHALL		Srvc Supervisor: MAGERS, MICHAEL	MBU ID Emp #: 339439

Job Personnel

HES Emp Name	Exp Hrs	Emp #	HES Emp Name	Exp Hrs	Emp #	HES Emp Name	Exp Hrs	Emp #
DEUSSEN, EDWARD Eric	12	485182	JENSEN, JESSE Robert	12	478774	MAGERS, MICHAEL Gerard	12	339439

Equipment

HES Unit #	Distance-1 way	HES Unit #	Distance-1 way	HES Unit #	Distance-1 way	HES Unit #	Distance-1 way
10867531	120 mile	10871245	120 mile	10989685	120 mile	11259886	120 mile
11360881	120 mile						

Job Hours

Date	On Location Hours	Operating Hours	Date	On Location Hours	Operating Hours	Date	On Location Hours	Operating Hours
03/01/2012	4.5	0	03/02/2012	7.5	1			

TOTAL Total is the sum of each column separately

Job

Job Times

Formation Name	Top	Bottom	Called Out	Date	Time	Time Zone
Form Type		BHST	On Location	01 - Mar - 2012	10:00	MST
Job depth MD	724. ft	Job Depth TVD	Job Started	01 - Mar - 2012	14:00	MST
Water Depth		Wk Ht Above Floor	Job Completed	02 - Mar - 2012	06:21	MST
Perforation Depth (MD)	From	To	Departed Loc	02 - Mar - 2012	07:28	MST
				02 - Mar - 2012	00:00	MST

Well Data

Description	New / Used	Max pressure psig	Size in	ID in	Weight lbm/ft	Thread	Grade	Top MD ft	Bottom MD ft	Top TVD ft	Bottom TVD ft
Sales/Rental/3rd Party (HES)											

Description	Qty	Qty uom	Depth	Supplier
R/A DENSOMETER W/CHART RECORDER,/JOB,ZI	1	JOB		
ADC (AUTO DENSITY CTRL) SYS, /JOB,ZI	1	JOB		
PORT. DATA ACQUIS. W/OPTICEM RT W/HES	1	EA		
PLUG,CMTG, TOP, 9 5/8, HWE, 8.16 MIN/9.06 MA	1	EA		

Tools and Accessories

Type	Size	Qty	Make	Depth	Type	Size	Qty	Make	Depth	Type	Size	Qty	Make
Guide Shoe					Packer					Top Plug	9.625	1	HES
Float Shoe					Bridge Plug					Bottom Plug			
Float Collar					Retainer					SSR plug set			
Insert Float										SWAGE	9.625	1	HES
Stage Tool										Centralizers			

Miscellaneous Materials

Gelling Agt	Conc	Surfactant	Conc	Acid Type	Qty	Conc %
Treatment Fld	Conc	Inhibitor	Conc	Sand Type	Size	Qty

Fluid Data

Stage/Plug #: 1													
Fluid #	Stage Type	Fluid Name	Qty	Qty uom	Mixing Density lbm/gal	Yield ft ³ /sk	Mix Fluid Gal/sk	Rate bbl/min	Total Mix Fluid Gal/sk				

1	Water Spacer		20.00	bbl	8.34	.0	.0	.0	
2	VersaCem Lead Cement	VERSACEM (TM) SYSTEM (452010)	120.0	sacks	12.3	2.38	13.77		13.77
	13.77 Gal	FRESH WATER							
3	SwiftCem Tail Cement	SWIFTCEM (TM) SYSTEM (452990)	120.0	sacks	14.2	1.43	6.85		6.85
	6.85 Gal	FRESH WATER							
4	Fresh Water Displacement		51.00	bbl	8.34			.0	
Calculated Values		Pressures			Volumes				
Displacement	51	Shut In: Instant		Lost Returns	0	Cement Slurry	81.5	Pad	
Top Of Cement	SURFACE	5 Min		Cement Returns	25	Actual Displacement	51	Treatment	
Frac Gradient		15 Min		Spacers	20	Load and Breakdown		Total Job	155
Rates									
Circulating	NONE	Mixing	4	Displacement	4/2	Avg. Job	4		
Cement Left In Pipe	Amount	44.7ft	Reason	Shoe Joint					
Frac Ring # 1 @	ID	Frac ring # 2 @	ID	Frac Ring # 3 @	ID	Frac Ring # 4 @	ID		
The Information Stated Herein Is Correct				Customer Representative Signature					

The Road to Excellence Starts with Safety

Sold To #: 343492	Ship To #: 2912645	Quote #:	Sales Order #: 9326665
Customer: BILL BARRETT CORPORATION E-BILL		Customer Rep: Lauer, Casey	
Well Name: GGU MILLER		Well #: 32A-31-691	API/UWI #: 05-045-21095
Field:	City (SAP): SILT	County/Parish: Garfield	State: Colorado
Legal Description:			
Lat: N 39.487 deg. OR N 39 deg. 29 min. 12.563 secs.		Long: W 107.591 deg. OR W -108 deg. 24 min. 32.141 secs.	
Contractor: ProPetro Services Inc.		Rig/Platform Name/Num: ProPetro	
Job Purpose: Cement Surface Casing			Ticket Amount:
Well Type: Development Well		Job Type: Cement Surface Casing	
Sales Person: METLI, MARSHALL		Srvc Supervisor: MAGERS, MICHAEL	MBU ID Emp #: 339439

Activity Description	Date/Time	Cht #	Rate bbl/min	Volume bbl		Pressure psig		Comments
				Stage	Total	Tubing	Casing	
Arrive At Loc	03/01/2012 14:30							HES ALREADY ON LOCATION/WAITING FOR NEXT JOB/TIME BEGINS AT 19:30
Assessment Of Location Safety Meeting	03/01/2012 14:35							WITH ALL HES PERSONNEL
Pre-Rig Up Safety Meeting	03/02/2012 05:50							WITH ALL HES PERSONNEL
Rig-Up Equipment	03/02/2012 06:00							1 PICKUP 1 ELITE 1 BULK TRUCK
Pre-Job Safety Meeting	03/02/2012 06:15							WITH ALL PERSONNEL ON LOCATION
Start Job	03/02/2012 06:21							TD-724 TP-704 SJ-44.7 CSG- 9 5/8 36# J-55 OH-12 1/4"
Other	03/02/2012 06:23		2	2			70.0	FILL LINES WITH FRESH WATER
Test Lines	03/02/2012 06:26		0.5	0.5			3400.0	PSI TEST OK
Pump Spacer 1	03/02/2012 06:29		4	20			107.0	FRESH WATER
Pump Lead Cement	03/02/2012 06:36		4	50.9			186.0	VERSACEM 120 SKS 12.3 PPG 2.38 FT3/SK 13.77 GAL/SK
Pump Tail Cement	03/02/2012 06:49		4	30.6			204.0	SWIFTCEM 120 SKS 14.2 PPG 1.43 FT3/SK 6.85 GAL/SK
Shutdown	03/02/2012 06:56							
Drop Top Plug	03/02/2012 07:07							PLUG LAUNCHED
Pump Displacement	03/02/2012 07:08		4	51			222.0	FRESH WATER
Activity Description	Date/Time	Cht #	Rate bbl/min	Volume bbl		Pressure psig		Comments
				Stage	Total	Tubing	Casing	

Sold To # : 343492

Ship To # :2912645

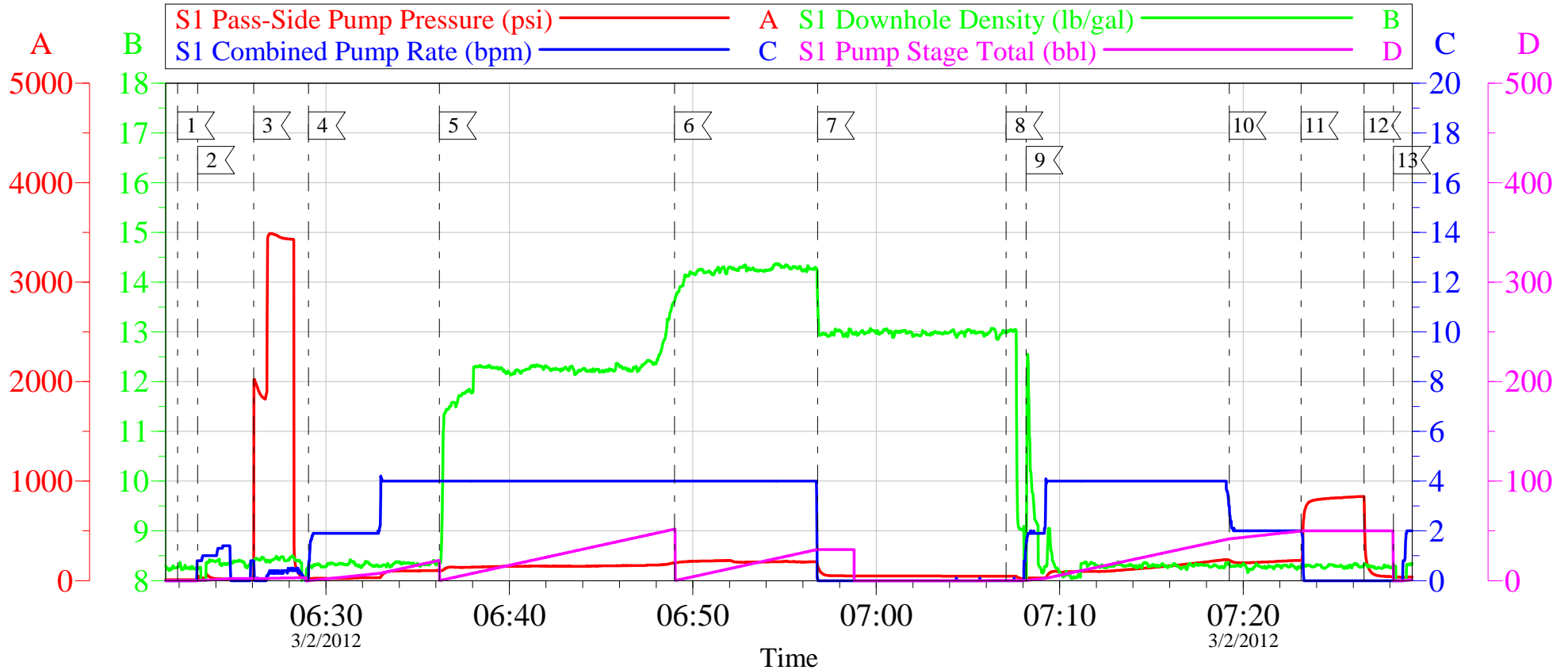
Quote # :

Sales Order # : 9326665

Slow Rate	03/02/2012 07:19		2	41			194.0	SLOW RATE 10 BBLs PRIOR TO CALCULATED DISPLACEMENT
Bump Plug	03/02/2012 07:23		2	51			220.0	PLUG BUMPED/GOT 25 BBLs OF CEMENT TO SURFACE
Check Floats	03/02/2012 07:26			51			780.0	FLOATS HOLDING./GOT .5 BBL BACK
End Job	03/02/2012 07:28							LOCK-IN LO-TORC VALUE
Rig-Down Equipment	03/02/2012 08:00							RID DOWN WAIT FOR NEXT HOLE
Comment	03/02/2012 22:14							THANK YOU FOR USING HALLIBURTON CEMENT DEPARTMENT. MIKE MAGERS AND CREW.

PRO PETRO GGU MILLER 32A-31-691

9.625 SURFACE



Local Event Log

1	START JOB	06:21:55	2	FILL LINES	06:23:00
3	PUMP SPACER	06:26:04	4	PRESSURE TEST	06:29:03
5	PUMP LEAD CEMENT	06:36:11	6	PUMP TAIL CEMENT	06:49:00
7	SHUT DOWN	06:56:48	8	DROP PLUG	07:07:04
9	PUMP FRSH WTR DISPLACEMENT	07:08:10	10	SLOW RATE	07:19:14
11	BUMP PLUG	07:23:10	12	CHECK FLOATS	07:26:35
13	END JOB	07:28:12			

Customer: BILL BARRETT
 Well Description: GGU MILLER 32A-31-691
 Customer Rep: CASEY LAUER

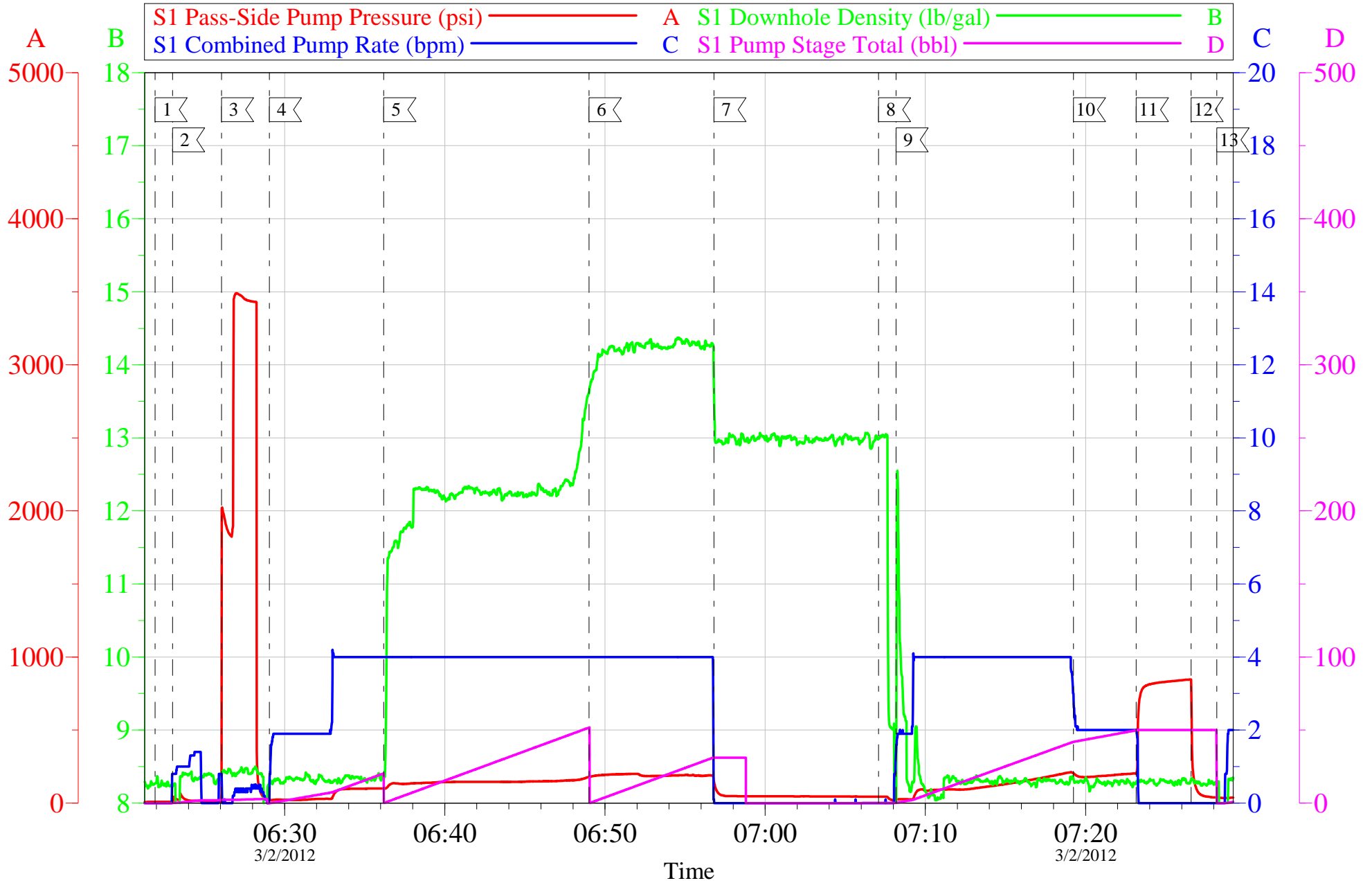
Job Date: 02-Mar-2012
 Job Type: SURFACE
 Cement Supervisor: MIKE MAGERS

Sales Order #: 9326665
 ADC Used: YES
 Elite # 8 JESSE JENSEN

OptiCem v6.4.10
 02-Mar-12 07:46

PRO PETRO GGU MILLER 32A-31-691

9.625 SURFACE



Customer: BILL BARRETT	Job Date: 02-Mar-2012	Sales Order #: 9326665
Well Description: GGU MILLER 32A-31-691	Job Type: SURFACE	ADC Used: YES
Customer Rep: CASEY LAUER	Cement Supervisor: MIKE MAGERS	Elite # 8 JESSE JENSEN

Sales Order #: 9326665	Line Item: 10	Survey Conducted Date: 3/2/2012
Customer: BILL BARRETT CORPORATION E-BILL		Job Type (BOM): CMT SURFACE CASING BOM
Customer Representative: CASEY LAUER		API / UWI: (leave blank if unknown) 05-045-21095
Well Name: GGU MILLER		Well Number: 32A-31-691
Well Type: Development Well	Well Country: United States of America	
H2S Present: No	Well State: Colorado	Well County: Garfield

Dear Customer,

We hope that you were satisfied with the service quality of this job performed by Halliburton. It is the aim of our management and service personnel to deliver equipment and service of a standard unmatched in the service sector of the energy industry.

Please take the time to let us know if our performance met with your satisfaction. Please be as critical as possible to ensure we constantly improve our service. Your comments are of great value to us and are intended for the exclusive use of Halliburton.

CUSTOMER SATISFACTION SURVEY

CATEGORY	CUSTOMER SATISFACTION RESPONSE	
Survey Conducted Date	The date the survey was conducted	3/2/2012
Survey Interviewer	The survey interviewer is the person who initiated the survey.	MICHAEL MAGERS (HX13672)
Customer Participation	Did the customer participate in this survey? (Y/N)	Yes
Customer Representative	Enter the Customer representative name	CASEY LAUER
HSE	Was our HSE performance satisfactory? Circle Y or N	Yes
Equipment	Were you satisfied with our Equipment? Circle Y or N	Yes
Personnel	Were you satisfied with our people? Circle Y or N	Yes
Customer Comment	Customer's Comment	

CUSTOMER SIGNATURE

Sales Order #: 9326665	Line Item: 10	Survey Conducted Date: 3/2/2012
Customer: BILL BARRETT CORPORATION E-BILL		Job Type (BOM): CMT SURFACE CASING BOM
Customer Representative: CASEY LAUER		API / UWI: (leave blank if unknown) 05-045-21095
Well Name: GGU MILLER		Well Number: 32A-31-691
Well Type: Development Well	Well Country: United States of America	
H2S Present: No	Well State: Colorado	Well County: Garfield

KEY PERFORMANCE INDICATORS

General	
Survey Conducted Date	3/2/2012
The date the survey was conducted	

Cementing KPI Survey	
Type of Job	0
Select the type of job. (Cementing or Non-Cementing)	
Select the Maximum Deviation range for this Job	Vertical
What is the highest deviation for the job you just completed? This may not be the maximum well deviation.	
Total Operating Time (hours)	2
Total Operating Hours Including Rig-up, Pumping, Rig-down. Enter in decimal format.	
HSE Incident, Accident, Injury	No
HSE Incident, Accident, Injury. This should be recordable incidents only.	
Was the job purpose achieved?	Yes
Was the job delivered correctly as per customer agreed design?	
Operating Hours (Pumping Hours)	1
Total number of hours pumping fluid on this job. Enter in decimal format.	
Customer Non-Productive Rig Time (hrs)	0
Lost time due to Halliburton in the start, execution, or completion of an ordered service or product, or delays in a follow-on service. Enter in decimal format. 0 if none.	
Type of Rig Classification Job Was Performed	Drilling Rig (Portable)
Type Of Rig (classification) Job Was Performed On	
Number Of JSAs Performed	4
Number Of Jsas Performed	
Number of Unplanned Shutdowns	0
Unplanned shutdown is when injection stops for any period of time.	
Was this a Primary Cement Job (Yes / No)	Yes

Sales Order #: 9326665	Line Item: 10	Survey Conducted Date: 3/2/2012
Customer: BILL BARRETT CORPORATION E-BILL		Job Type (BOM): CMT SURFACE CASING BOM
Customer Representative: CASEY LAUER		API / UWI: (leave blank if unknown) 05-045-21095
Well Name: GGU MILLER		Well Number: 32A-31-691
Well Type: Development Well	Well Country: United States of America	
H2S Present: No	Well State: Colorado	Well County: Garfield

Primary Cement Job= Casing job, Liner job, or Tie-back job.	
Did We Run Wiper Plugs? Did We Run Top And Bottom Casing Wiper Plugs?	Top
Mixing Density of Job Stayed in Designed Density Range (0-100%) Density Range defined as +/- .20 ppg. Calculation: Total BBLs cement mixed at designed density divided by total BBLs of cement multiplied by 100	94
Was Automated Density Control Used? Was Automated Density Control (ADC) Used ?	Yes
Pump Rate (percent) of Job Stayed At Designed Pump Rate Pump Rate range defined as +/- 1bbl/min. Calculation: Total BBLs of fluid pumped at the designed rate divided by Total BBLs of fluid pumped, multiplied by 100	95
Nbr of Remedial Sqz Jobs Rqd - Competition Number Of Remedial Squeeze Jobs Required After Primary Job Performed By Competition	0
Nbr of Remedial Plug Jobs Rqd - HES Number Of Remedial Plug Jobs Needed After Primary Plug Pumped By HES	0
Nbr of Remedial Sqz Jobs Rqd - HES Number Of Remedial Squeeze Jobs Required After Primary Job Performed By HES	0