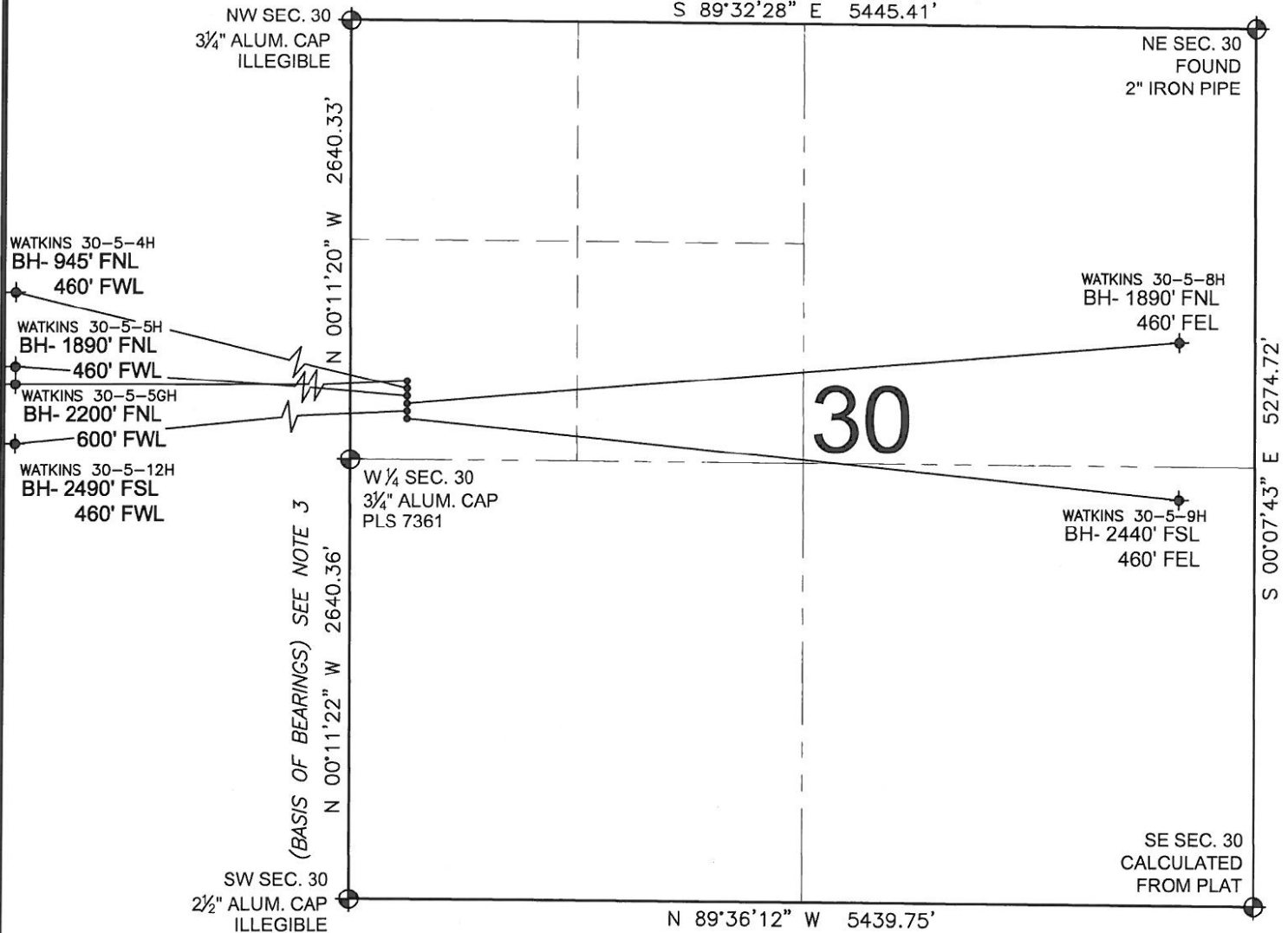


PAD DRAWING: WATKINS 6 PAD

SECTION 30, TOWNSHIP 4 SOUTH, RANGE 64 WEST, 6TH P.M.



LEGEND

- = EXISTING MONUMENT
 = BOTTOM HOLE
 BH= BOTTOM HOLE
 = PROPOSED WELL
 = EXISTING WELL

NOTES:

- THIS FIELD SURVEY CONFORMS TO THE MINIMUM STANDARDS SET BY THE C.O.G.C.C., RULE NO. 215
- HORIZONTAL POSITIONS AND ORTHOMETRIC ELEVATIONS SHOWN AT THE WELL HEAD, ARE BASED ON GPS-RTK POSITIONS DERIVED FROM MINIMUM 2-HOUR STATIC OBSERVATIONS CORRECTED BY THE NATIONAL GEODETIC SURVEY ONLINE POSITIONING USER SERVICE, O.P.U.S. DATUM: HORIZONTAL = NAD83/2007, VERTICAL = NAVD88
- THE BASIS OF BEARINGS ARE STATE PLANE COORDINATE SYSTEM GRID BEARINGS SHOWN HEREON BETWEEN THE DESCRIBED THE MONUMENTS SHOWN HEREON.
- GRID DISTANCES ARE SHOWN, AS MEASURED IN THE FIELD, WITH TIES TO WELLS MEASURED PERPENDICULAR TO SECTION LINES.

NOTES:

WATKINS 30-5-5GH TO BE AT 2190' FNL, 350' FWL.
 BOTTOM HOLE AT 2200' FNL & 600' FWL.
 WATKINS 30-5-4H TO BE AT 2220' FNL, 350' FWL.
 BOTTOM HOLE AT 945' FNL & 460' FWL.
 WATKINS 30-5-5H TO BE AT 2250' FNL, 350' FWL.
 BOTTOM HOLE AT 1890' FNL & 460' FWL.
 WATKINS 30-5-8H TO BE AT 2280' FNL, 350' FWL.
 BOTTOM HOLE AT 1890' FNL & 460' FWL.
 WATKINS 30-5-12H TO BE AT 2310' FNL, 350' FWL.
 BOTTOM HOLE AT 2490' FSL & 460' FWL.
 WATKINS 30-5-9H TO BE AT 2340' FNL, 350' FWL.
 BOTTOM HOLE AT 2440' FSL & 460' FWL.

PREPARED BY:



ANADARKO E&P CO LP

FIELD DATE: 02-08-12	PAD NAME: WATKINS 6 PAD
DRAWING DATE: 02-23-12	SURFACE LOCATION: ARAPAHOE COUNTY, COLORADO
BY: JAM	SW 1/4 NW 1/4, SEC. 30, T4S, R64W, 6TH P.M.

