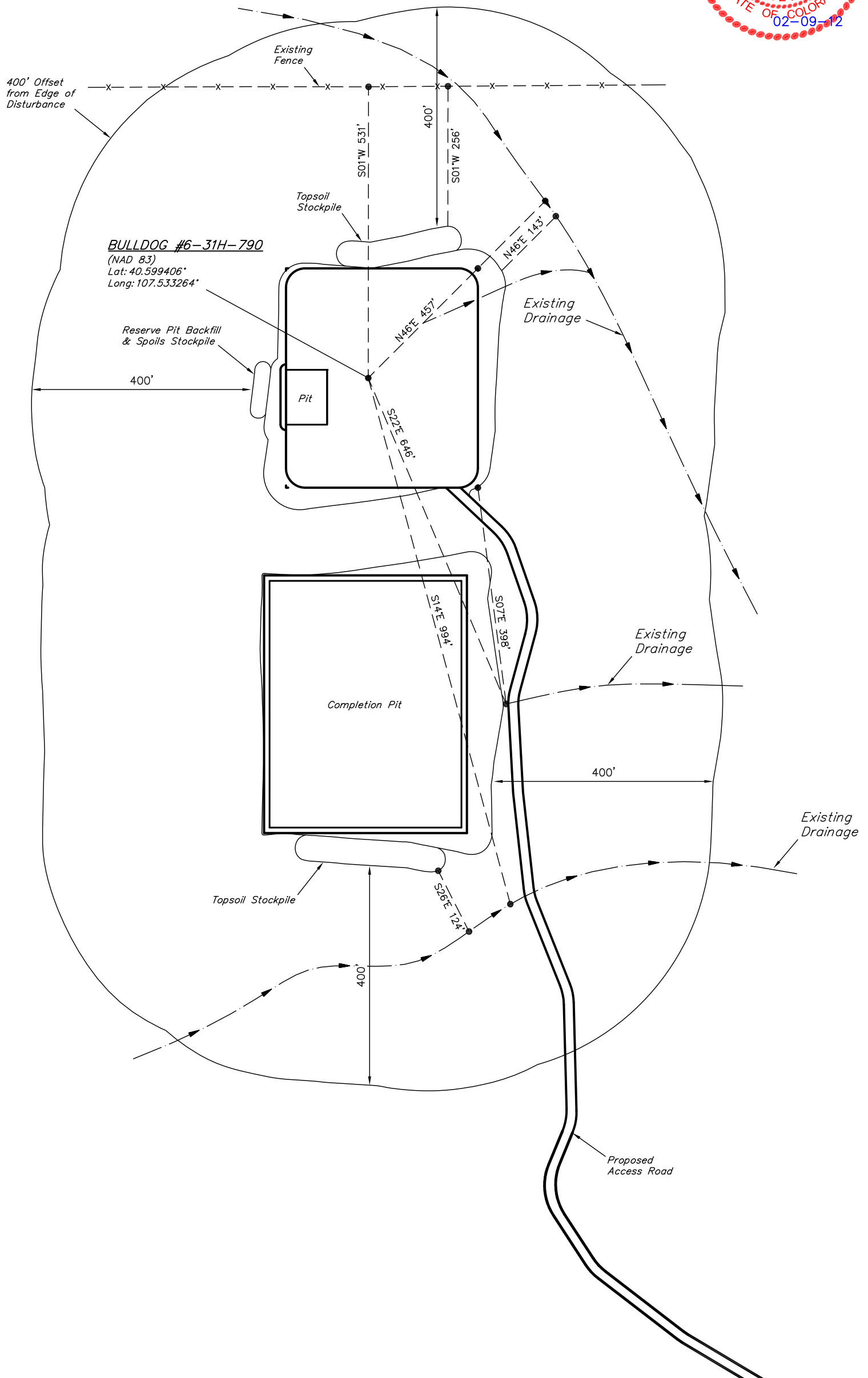




AXIA ENERGY
ADDENDUM TO LEGAL PLAT FOR
BULLDOG #6-31H-790
SECTION 6, T7N, R90W, 6th P.M.
533' FNL 2441' FEL

SCALE: 1" = 200'
DATE: 02-02-12
DRAWN BY: Z.L.



AXIA ENERGY

CONSTRUCTION LAYOUT FOR

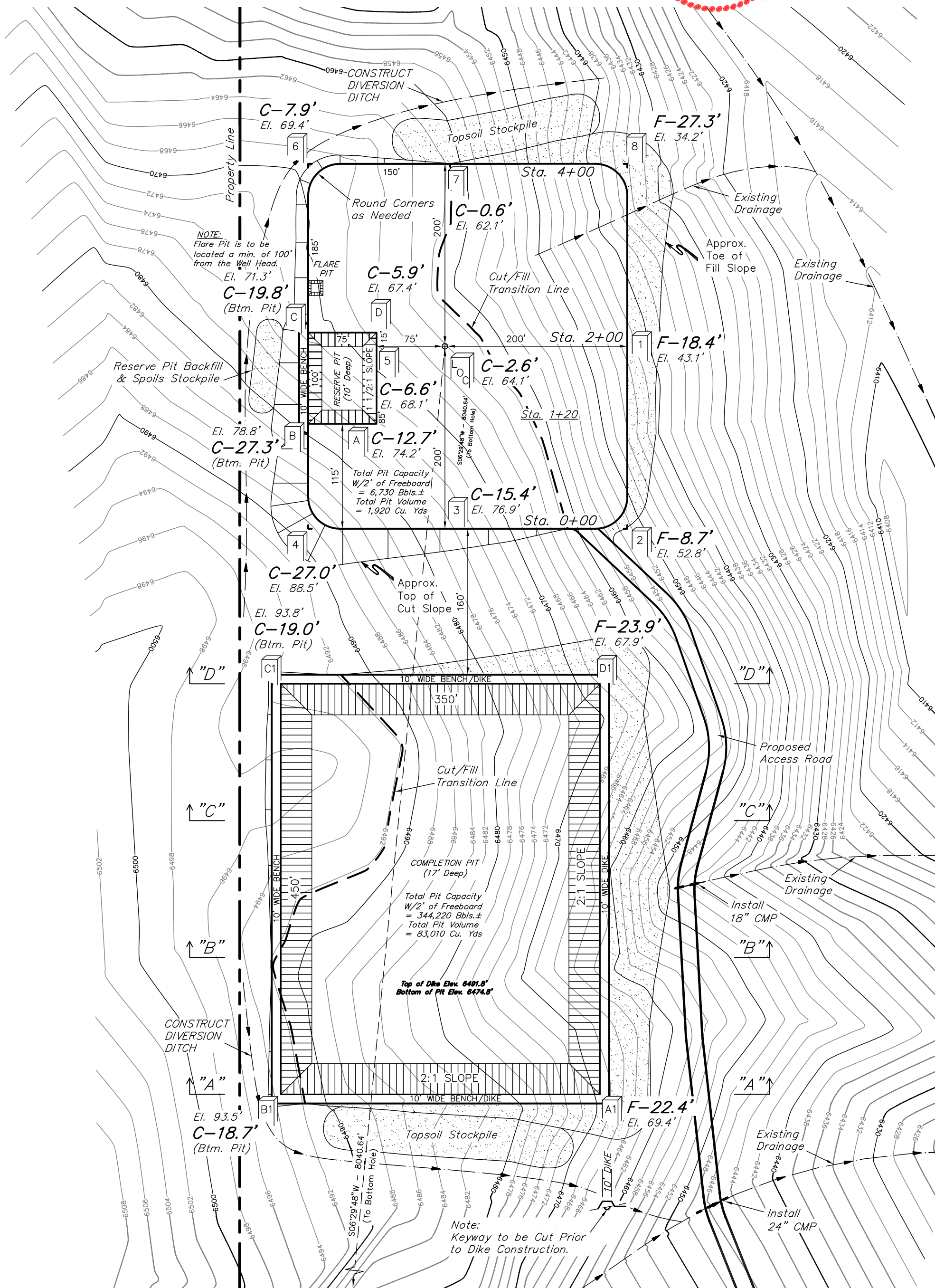
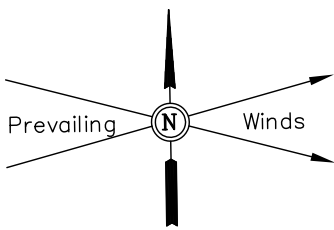
BULLDOG #6-31H-790

SECTION 6, T7N, R90W, 6th P.M.

533' FNL 2441' FEL

FIGURE #1

SCALE: 1" = 100'
DATE: 02-02-12
DRAWN BY: Z.L.
REVISED: 03-06-12



NOTE:
Flare Pit is to be located a min. of 100' from the Well Head.
El. 71.3'

Total Pit Capacity
W/2' of Freeboard
= 6,730 Bbls.±
Total Pit Volume
= 1,920 Cu. Yds

Total Pit Capacity
W/2' of Freeboard
= 344,220 Bbls.±
Total Pit Volume
= 83,010 Cu. Yds

Top of Dike Elev. 6491.8'
Bottom of Pit Elev. 6474.8'

Note:
Keyway to be Cut Prior to Dike Construction.

Elev. Ungraded Ground At Loc. Stake = 6464.1'
FINISHED GRADE ELEV. AT LOC. STAKE = 6461.5'

UINTAH ENGINEERING & LAND SURVEYING
85 So. 200 East * Vernal, Utah 84078 * (435) 789-1017

AXIA ENERGY

CONSTRUCTION LAYOUT CROSS SECTIONS FOR

BULLDOG #6-31H-790

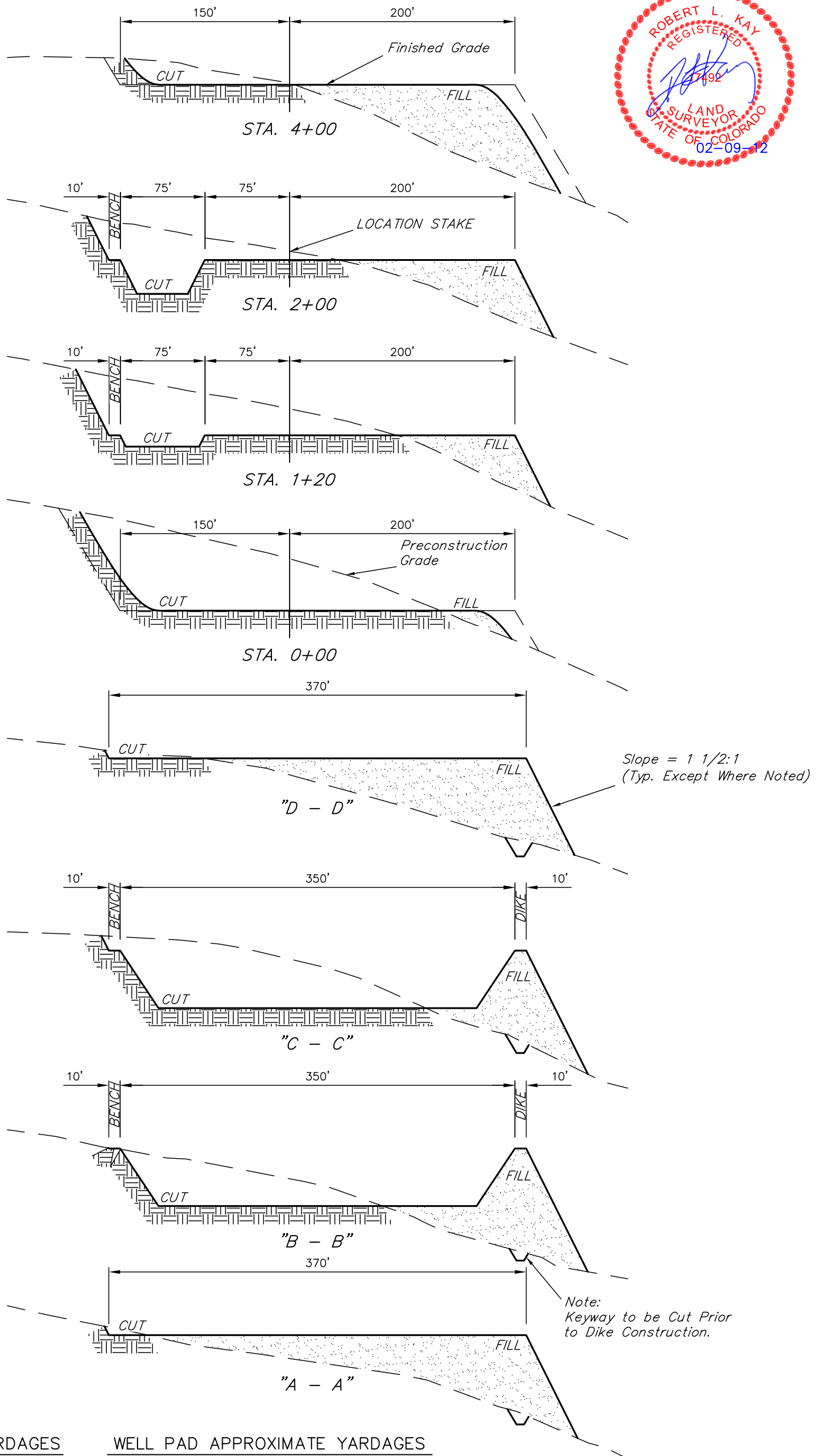
SECTION 6, T7N, R90W, 6th P.M.

533' FNL 2441' FEL

FIGURE #2

1" = 40'
X-Section Scale
1" = 100'

DATE: 02-02-12
DRAWN BY: Z.L.



NOTE:
Topsoil should not be Stripped Below Finished Grade on Substructure Area.

* NOTE:
FILL QUANTITY INCLUDES 5% FOR COMPACTION

COMPLETION PIT APPROXIMATE YARDAGES

(6") Topsoil Stripping	=	4,220 Cu. Yds.
Remaining Location	=	40,470 Cu. Yds.
TOTAL CUT	=	44,690 CU.YDS.
FILL	=	40,470 CU.YDS.
EXCESS MATERIAL	=	4,220 Cu. Yds.
Topsoil	=	4,220 Cu. Yds.
EXCESS UNBALANCE (After Interim Rehabilitation)	=	0 Cu. Yds.

WELL PAD APPROXIMATE YARDAGES

(6") Topsoil Stripping	=	3,440 Cu. Yds.
Remaining Location	=	30,920 Cu. Yds.
TOTAL CUT	=	34,360 CU.YDS.
FILL	=	29,960 CU.YDS.
EXCESS MATERIAL	=	4,400 Cu. Yds.
Topsoil & Pit Backfill (1/2 Pit Vol.)	=	4,400 Cu. Yds.
EXCESS UNBALANCE (After Interim Rehabilitation)	=	0 Cu. Yds.

APPROXIMATE ACREAGES
WELL SITE DISTURBANCE = ± 9.566 ACRES
ACCESS ROAD DISTURBANCE = ± 2.741 ACRES
TOTAL = ± 12.307 ACRES

UINTAH ENGINEERING & LAND SURVEYING
85 So. 200 East * Vernal, Utah 84078 * (435) 789-1017



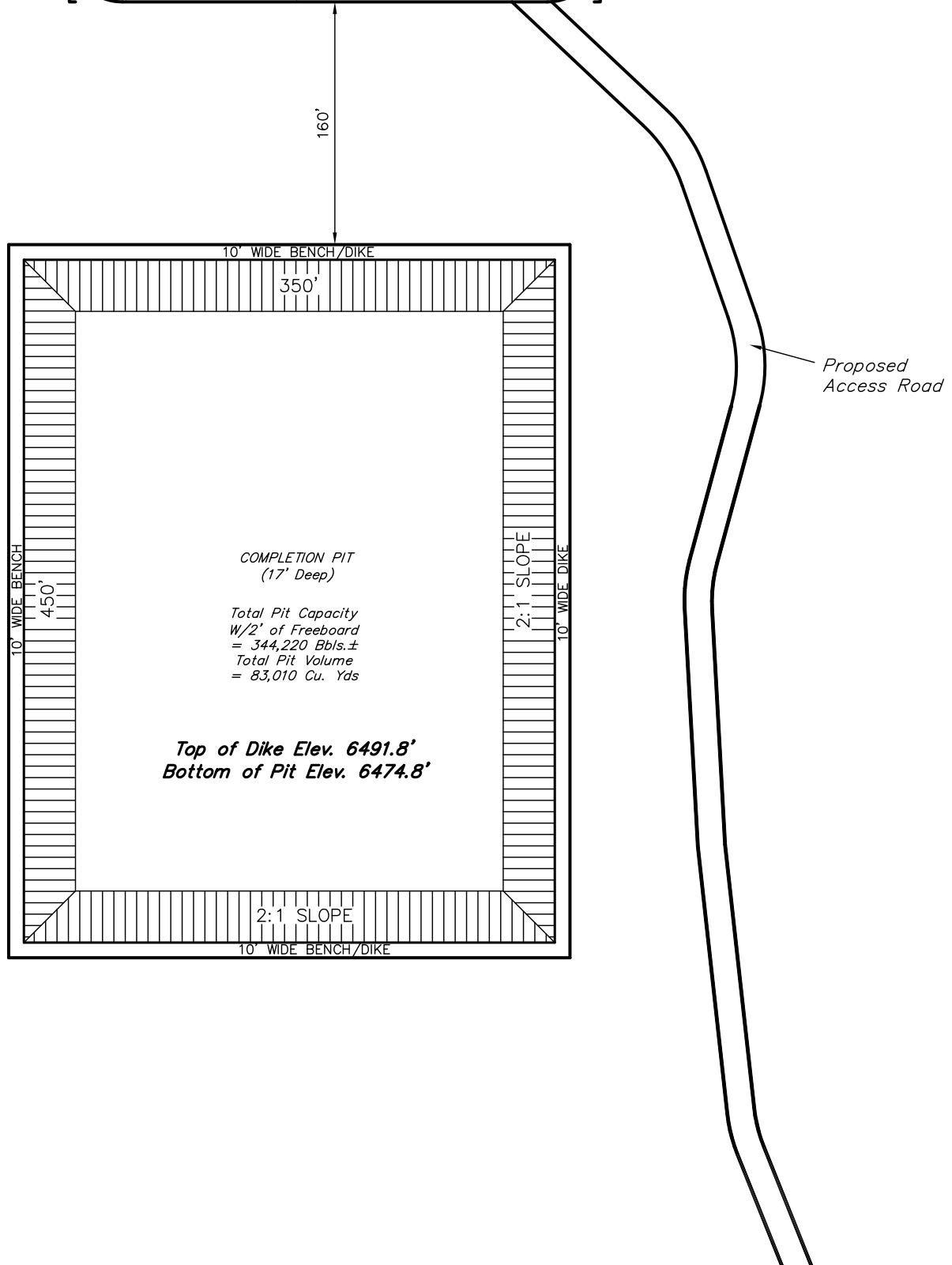
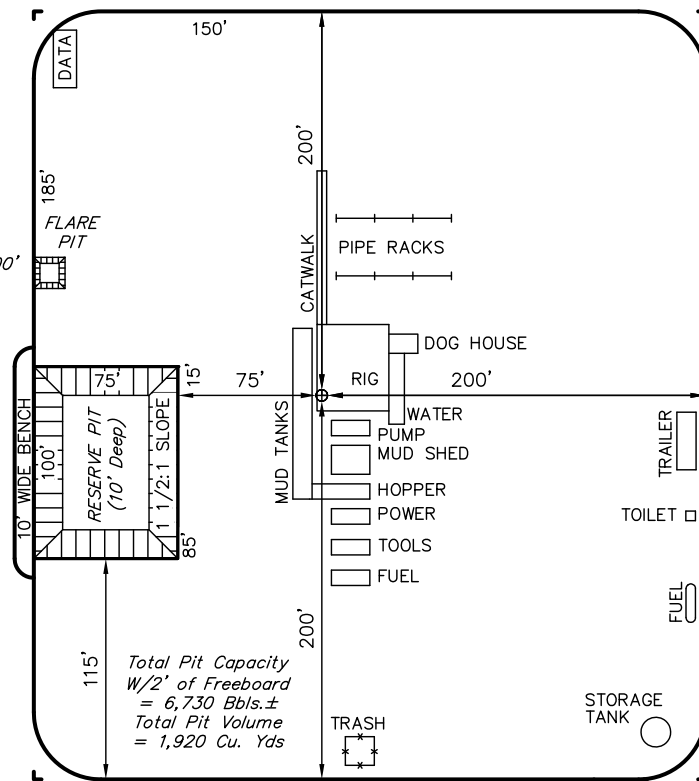
AXIA ENERGY
TYPICAL RIG LAYOUT FOR
BULLDOG #6-31H-790
SECTION 6, T7N, R90W, 6th P.M.
533' FNL 2441' FEL

FIGURE #3

SCALE: 1" = 100'
DATE: 02-02-12
DRAWN BY: Z.L.



NOTE:
Flare Pit is to be
located a min. of 100'
from the Well Head.





AXIA ENERGY
RECLAMATION DIAGRAM FOR
BULLDOG #6-31H-790
SECTION 6, T7N, R90W, 6th P.M.
533' FNL 2441' FEL

FIGURE #4

SCALE: 1" = 100'
DATE: 02-02-12
DRAWN BY: Z.L.

