

LOCATION DRAWING

VEGETATION:
PASTURE

SURFACE USE:
GRAZING

REFERENCE POINT

LATITUDE: 40.59714

LONGITUDE: -104.09309

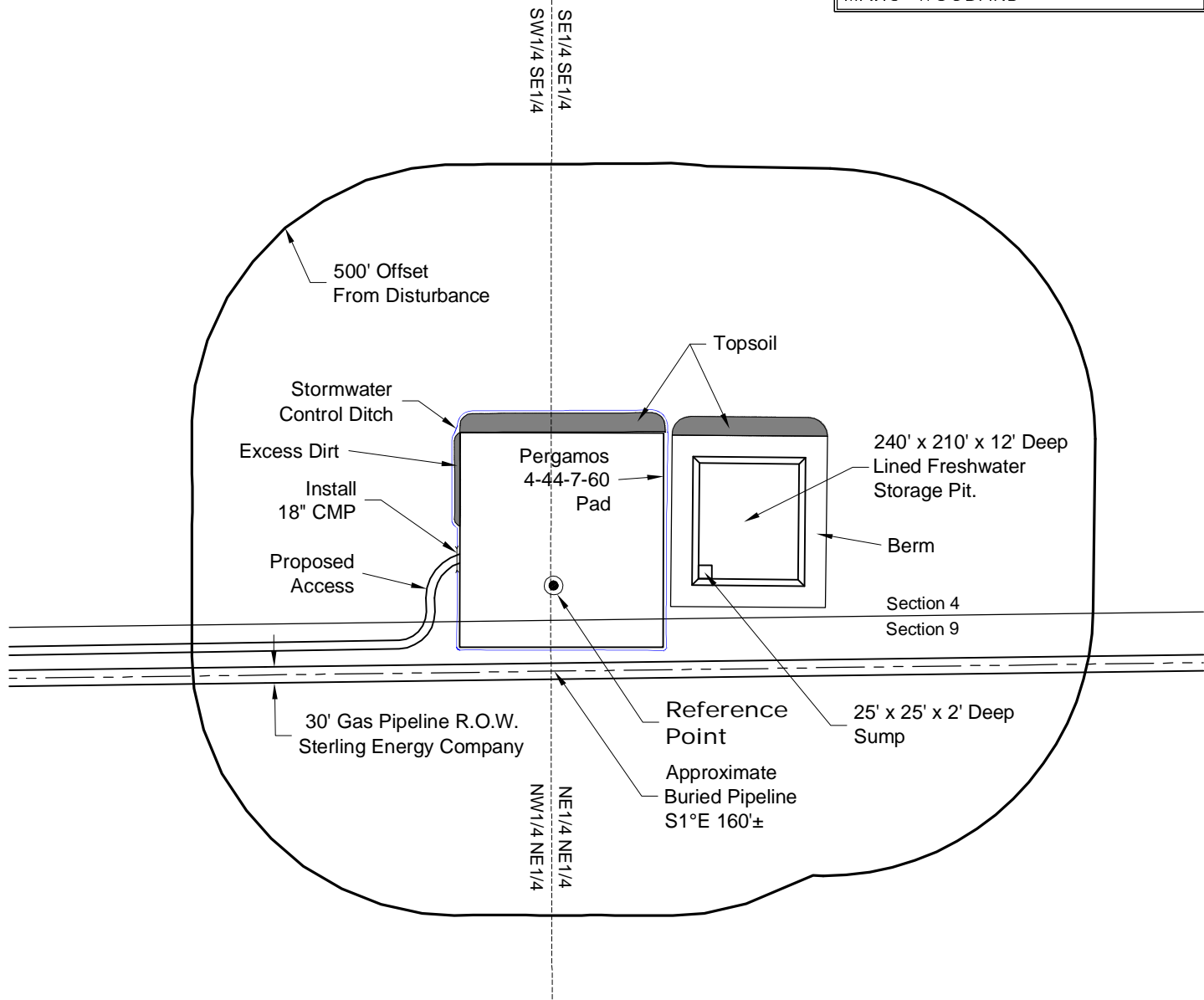
FOOTAGE: 65 FSL 1339 FEL

GROUND ELEVATION: 4910.4

PDOP: 1.8 DATE: 3/19/2012

INSTRUMENT OPERATOR:

MARC WOODARD

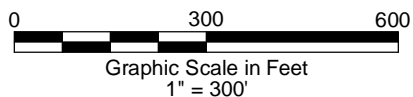


NOTE:

ALL PRODUCTION FACILITIES WILL BE ON PAD.

DISTURBANCE ACREAGE:
4.3± DRILLING OPERATIONS
2.3± FRESHWATER PIT
1.0± INTERIM RECLAIM

3/27/12



LAND SURVEYING AND MAPPING
LAFAYETTE - WINTER PARK
Ph 303 666 0379 Fx 303 665 6320

CARRIZO OIL & GAS, INC
PERGAMOS 4-44-7-60 PAD

SE1/4 SE1/4 SEC. 4 T7N R60W
6th PM WELD COUNTY COLORADO