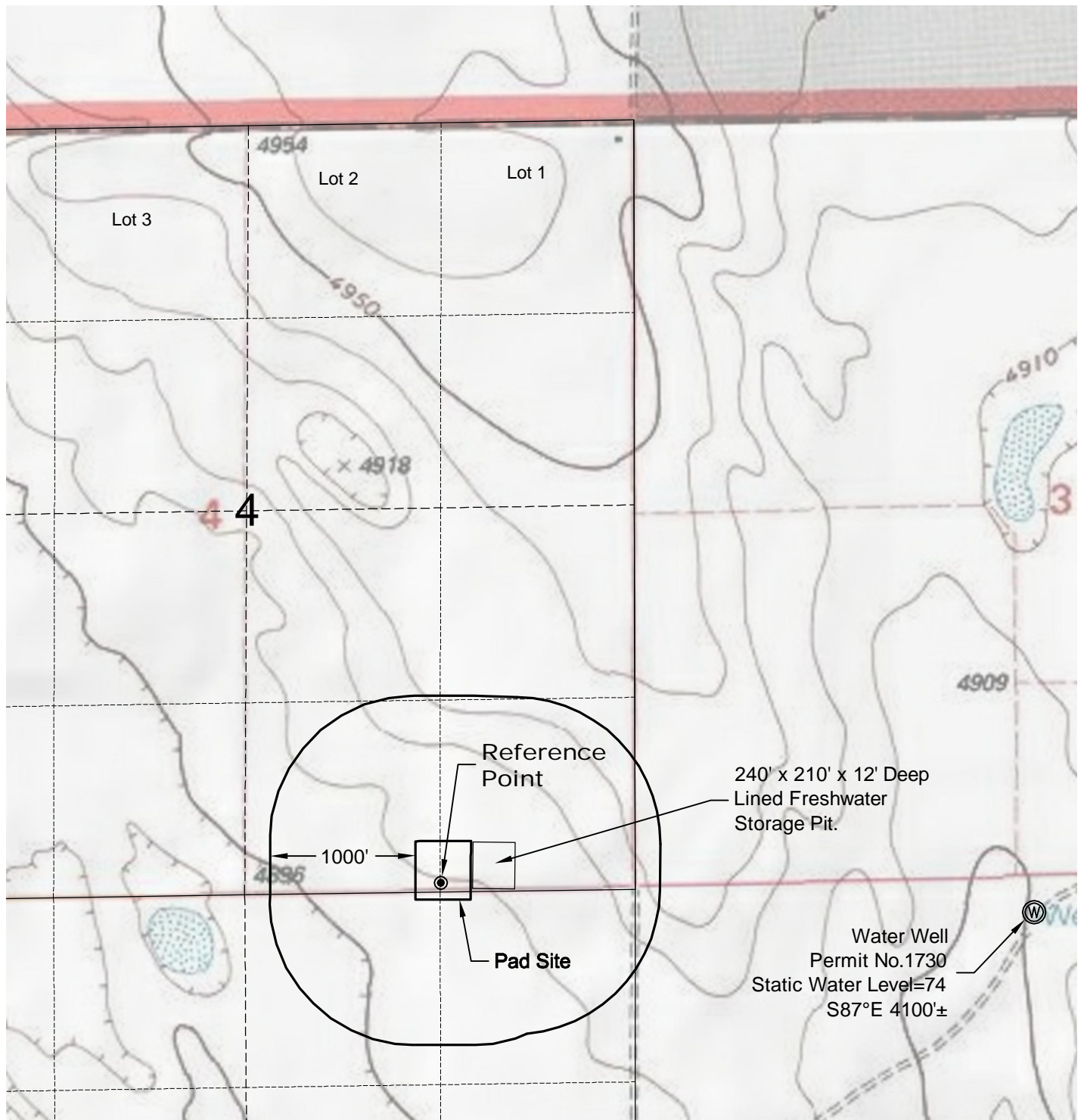


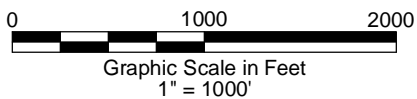
HYDROLOGY MAP



NOTE:

NO SURFACE WATERS WITHIN 1000' OF PAD SITE.

3/27/12



GEO SURV

LAND SURVEYING AND MAPPING
LAFAYETTE - WINTER PARK
Ph 303 666 0379 Fx 303 665 6320

CARRIZO OIL & GAS, INC
PERGAMOS 4-44-7-60 PAD

SE1/4 SE1/4 SEC. 4 T7N R6W
6th PM WELD COUNTY COLORADO