

# CONSTRUCTION LAYOUT DRAWING

1 of 2

VEGETATION:  
PASTURE

SURFACE USE:  
GRAZING

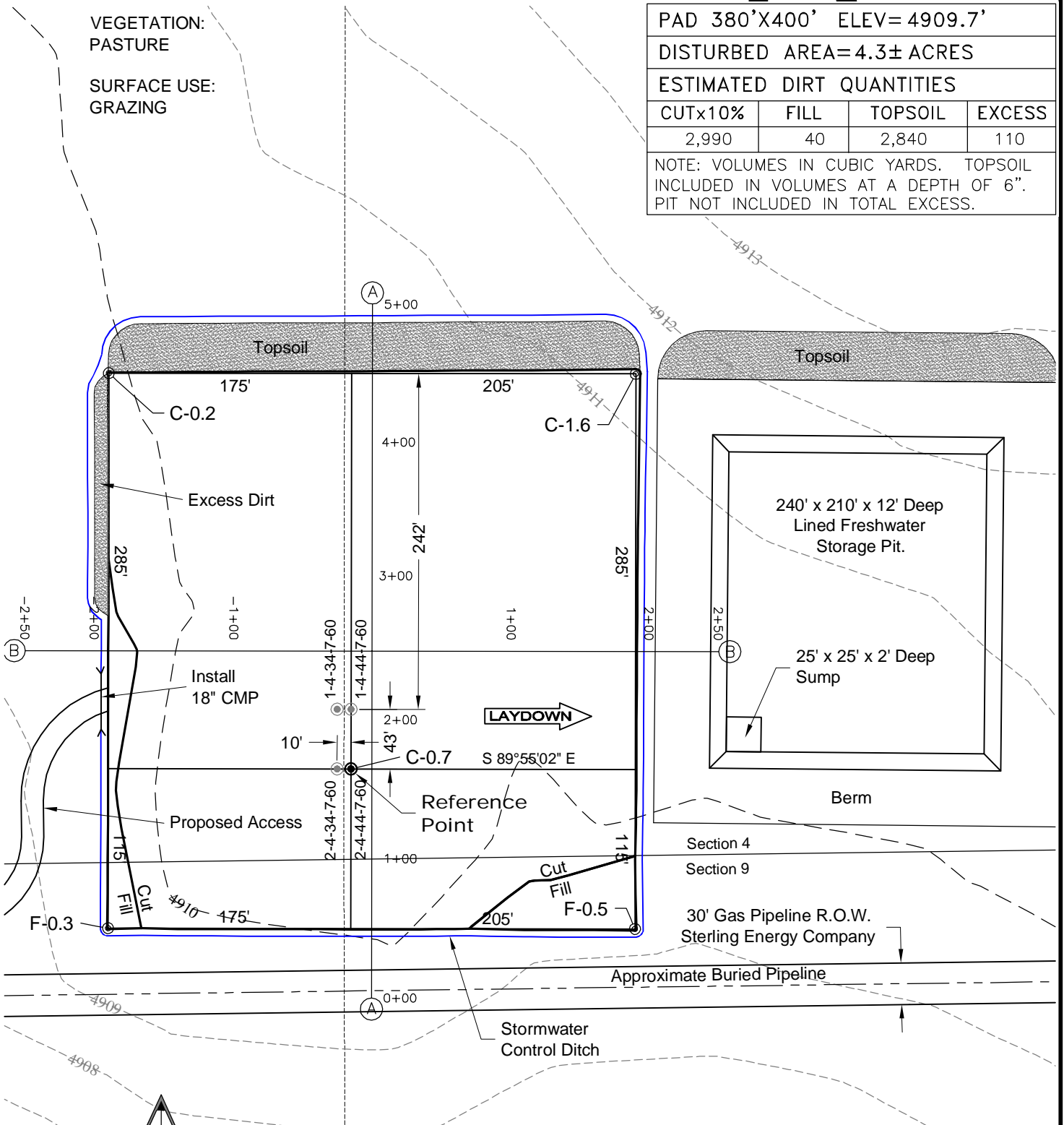
PAD 380'X400' ELEV= 4909.7'

DISTURBED AREA= 4.3± ACRES

ESTIMATED DIRT QUANTITIES

CUTx10%	FILL	TOPSOIL	EXCESS
2,990	40	2,840	110

NOTE: VOLUMES IN CUBIC YARDS. TOPSOIL INCLUDED IN VOLUMES AT A DEPTH OF 6". PIT NOT INCLUDED IN TOTAL EXCESS.



NOTE:  
10% ALLOWANCE IS MADE FOR SOIL EXPANSION.

3/27/12

**GEO SURV**

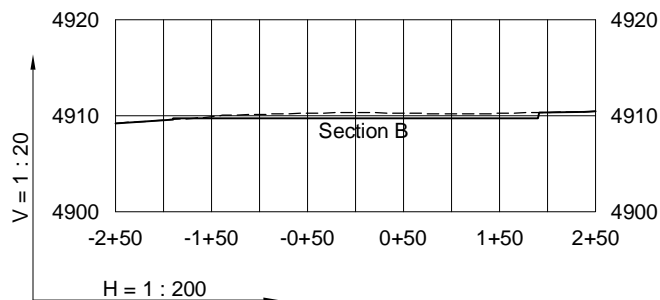
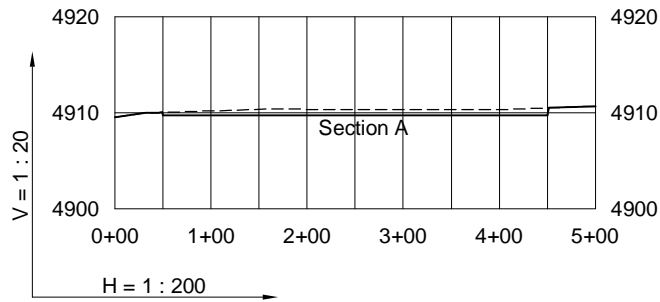
LAND SURVEYING AND MAPPING  
LAFAYETTE - WINTER PARK  
Ph 303 666 0379 Fx 303 665 6320

**CARRIZO OIL & GAS, INC**  
**PERGAMOS 4-44-7-60 PAD**

**SE1/4 SE1/4 SEC. 4 T7N R60W**  
**6th PM WELD COUNTY COLORADO**

# CONSTRUCTION LAYOUT DRAWING

2 of 2



3/27/12

----- Existing Ground  
 \_\_\_\_\_ Proposed Grade



**GEO  
SURV**

LAND SURVEYING AND MAPPING  
 LAFAYETTE - WINTER PARK  
 Ph 303 666 0379 Fx 303 665 6320

**CARRIZO OIL & GAS, INC**  
**PERGAMOS 4-44-7-60 PAD**

**SE1/4 SE1/4 SEC. 4 T7N R60W**  
**6th PM WELD COUNTY COLORADO**