

PROPOSED WELLBORE SPACING UNIT

T6N, R67W, 6th P.M.

GREAT WESTERN OIL & GAS COMPANY

Well location, H-Y #29-31-8, located as shown in the NE 1/4 NW 1/4 of Section 29, T6N, R67W, 6th P.M., Weld County, Colorado.

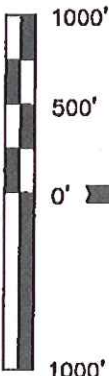
BASIS OF ELEVATION

USGS COOPERATIVE BASE NETWORK CONTROL STATION, DESIGNATION 'VERMILYEA'. NGS DATA SHEET LISTS THE NAVD 88 ELEVATION AS BEING 5026 FEET

BASIS OF BEARINGS

BASIS OF BEARINGS IS A G.P.S. OBSERVATION.

LINE	DIRECTION	LENGTH
L1	S54.34.14"E	840.38'



CERTIFICATE

THIS IS TO CERTIFY THAT THE ABOVE PLAT WAS PREPARED FROM FIELD NOTES OF ACTUAL SURVEYS MADE BY ME OR UNDER MY SUPERVISION AND THAT THE SAME ARE TRUE AND CORRECT TO THE BEST OF MY KNOWLEDGE AND BELIEF.

REGISTERED LAND SURVEYOR
REGISTRATION NO. 17422
STATE OF COLORADO
02-22-12

REVISED: 02-22-12

UTIAH ENGINEERING & LAND SURVEYING

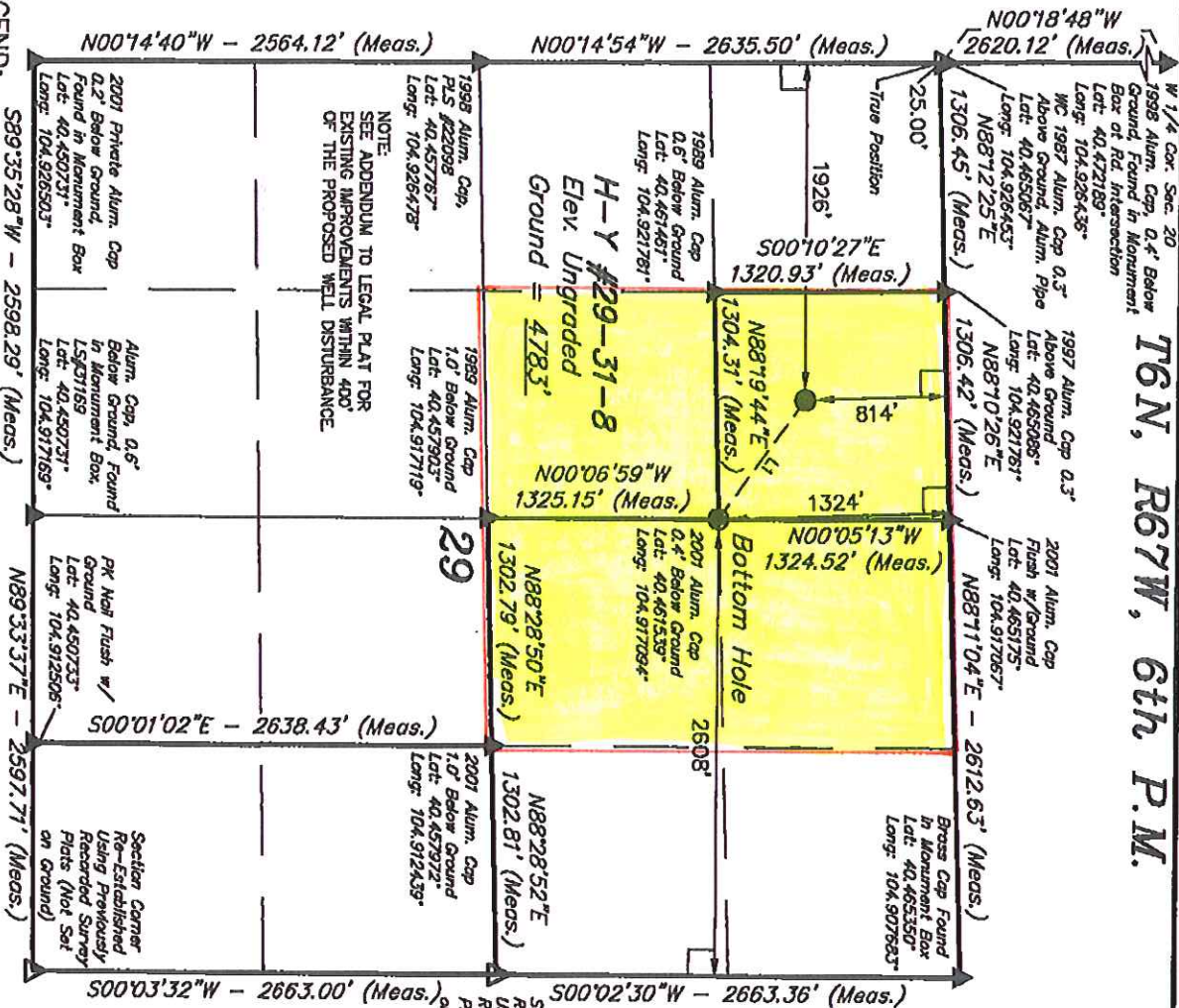
85 SOUTH 200 EAST - VERNAL, UTAH 84078

(435) 789-1017

SCALE 1" = 1000'

DATE SURVEYED: 02-07-12 DATE DRAWN: 02-10-12

PARTY L.S. A.J. S.L. REFERENCES G.L.O. PLAT WEATHER COOL FILE GREAT WESTERN OIL & GAS COMPANY



NOTE:
SEE ADDENDUM TO LEGAL PLAT FOR
EXISTING IMPROVEMENTS WITHIN 400'
OF THE PROPOSED WELL DISTURBANCE.

LEGEND:

- = 90° SYMBOL
- ▲ = PROPOSED WELL HEAD.
- △ = SECTION CORNERS LOCATED.
- = SECTION CORNERS RE-ESTABLISHED.
- (Not Set on Ground.)

PDOP = 2.0