

# PROPOSED WELLBORE SPACING UNIT

T6N, R67W, 6th P.M.

GREAT WESTERN OIL & GAS COMPANY

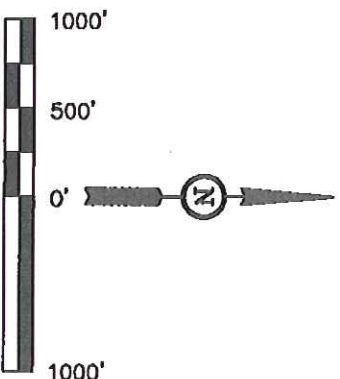
Well location, H-Y #20-23-18 (TARGET BOTTOM HOLE), located as shown in the S 1/2 of Section 20, T6N, R67W, 6th P.M., Weld County, Colorado.

## BASIS OF ELEVATION

USGS COOPERATIVE BASE NETWORK CONTROL STATION, DESIGNATION "VERMILYEA". NGS DATA SHEET LISTS THE NAVD 88 ELEVATION AS BEING 5026 FEET

## BASIS OF BEARINGS

BASIS OF BEARINGS IS A G.P.S. OBSERVATION.



## CERTIFICATE

THIS IS TO CERTIFY THAT THE ABOVE PLAT WAS PREPARED FROM FIELD NOTES OF ACTUAL SURVEYS MADE BY ME OR UNDER MY SUPERVISION AND THAT THE SAME ARE TRUE AND CORRECT TO THE BEST OF MY KNOWLEDGE AND BELIEF.

REGISTERED LAND SURVEYOR  
REGISTRATION NO. 15492  
STATE OF COLORADO  
02-16-12

UTAH ENGINEERING & LAND SURVEYING

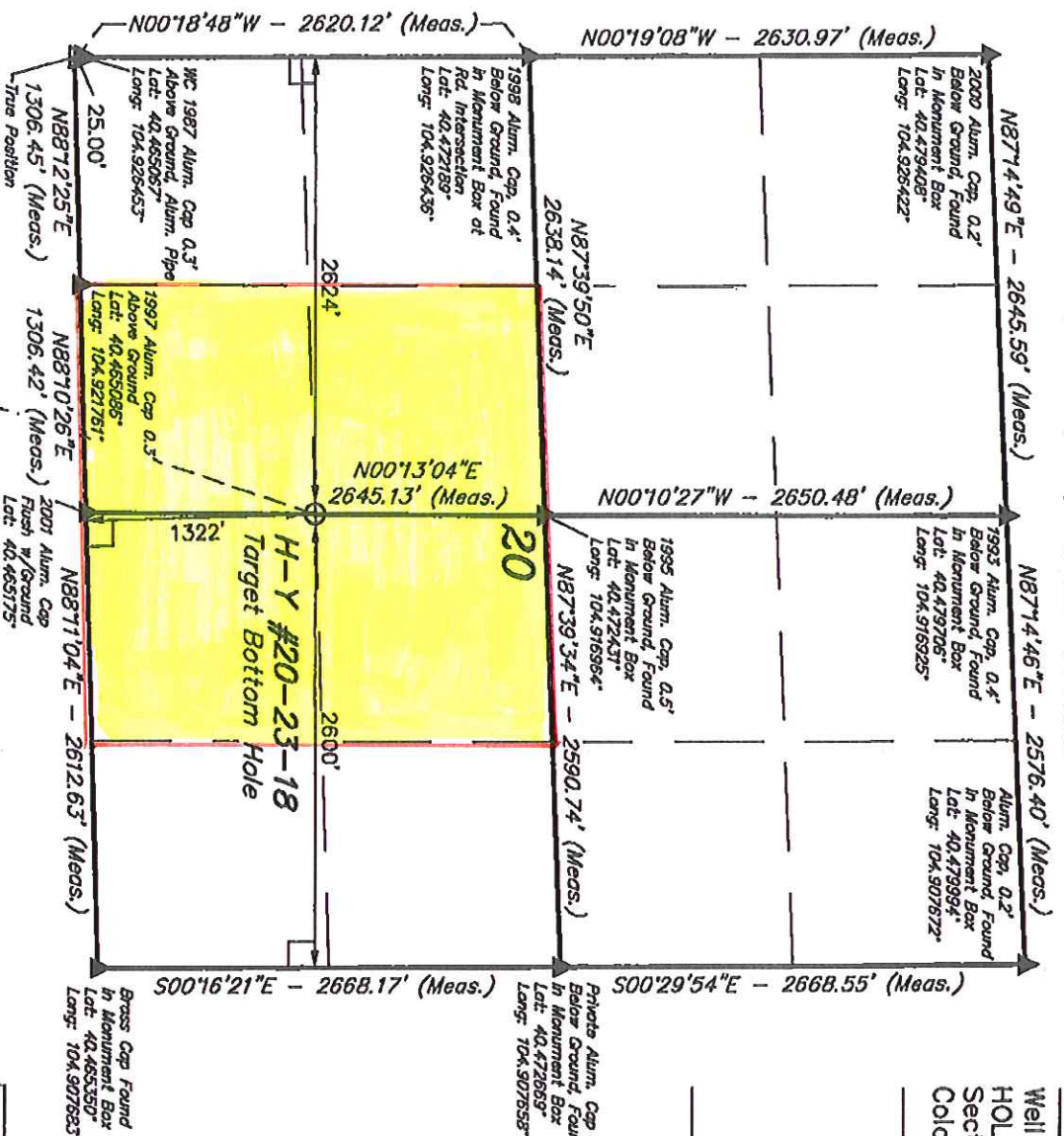
85 SOUTH 200 EAST - VERNAL, UTAH 84078

(435) 789-1017

SCALE	DATE SURVEYED:	DATE DRAWN:
1" = 1000'	02-07-12	02-10-12

PARTY	REFERENCES
L.S. A.J. S.L.	G.L.O. PLAT

WEATHER	FILE
COOL	GREAT WESTERN OIL & GAS COMPANY



## LEGEND:

- = PROPOSED WELL HEAD.
- ▲ = SECTION CORNERS LOCATED.
- △ = SECTION CORNERS RE-ESTABLISHED.
- (Not Set on Ground.)

## NOTE:

THE PROPOSED BOTTOM HOLE BEARS N87°10'49"E 2177.27' FROM THE PROPOSED WELL HEAD WHICH IS LOCATED IN THE NE 1/4 NW 1/4 OF SECTION 20, T6N, R67W, 6th P.M., AT 724' FNL 1934' FNL.

MONUMENT	COORDINATES
NAD 83 (TARGET BOTTOM HOLE)	LATITUDE = 40°28'07.69" (40.4689033)
	LONGITUDE = 104°55'01.28" (104.917017)
NAD 27 (TARGET BOTTOM HOLE)	LATITUDE = 40°28'07.75" (40.468919)
	LONGITUDE = 104°54'59.36" (104.915489)



# PROPOSED WELLBORE SPACING UNIT

## GREAT WESTERN OIL & GAS COMPANY

Well location, H-Y #20-23-18 (SURFACE LOCATION), located as shown in the NE 1/4 NW 1/4 of Section 29, T6N, R67W, 6th P.M., Weld County, Colorado.

### BASIS OF ELEVATION

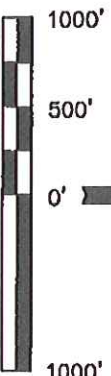
USGS COOPERATIVE BASE NETWORK CONTROL STATION, DESIGNATION "VERMILYEA". NGS DATA SHEET LISTS THE NAVD 88 ELEVATION AS BEING 5026 FEET

### BASIS OF BEARINGS

BASIS OF BEARINGS IS A G.P.S. OBSERVATION.

LINE	DIRECTION	LENGTH
L1	N1810'49"E	2177.27'

Section Corner  
Re-Established  
Using Previously  
Recorded Survey  
Plots (Not Set  
on Ground)



### CERTIFICATE

THIS IS TO CERTIFY THAT THE ABOVE PLAT WAS PREPARED FROM FIELD NOTES OF ACTUAL SURVEYS MADE BY ME OR UNDER MY SUPERVISION AND THAT THE SAME ARE TRUE AND CORRECT TO THE BEST OF MY KNOWLEDGE AND BELIEF.

REGISTERED LAND SURVEYOR  
STATE OF COLORADO  
02-16-12

UTAH ENGINEERING & LAND SURVEYING

85 SOUTH 200 EAST - VERNAL, UTAH 84078

(435) 789-1017

PDOP = 2.1

SCALE  
1" = 1000'

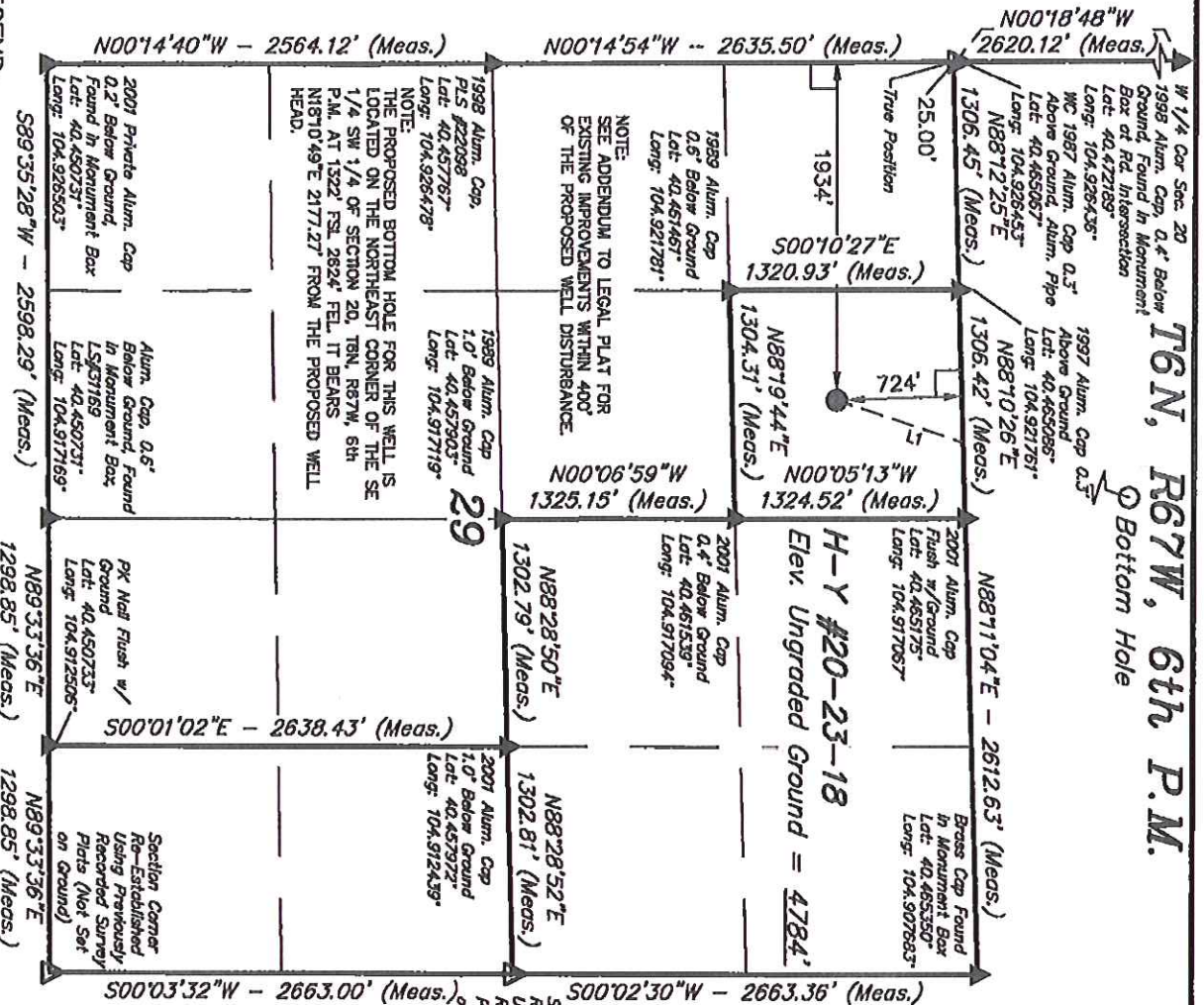
DATE SURVEYED: 02-07-12  
DATE DRAWN: 02-10-12

PARTY: L.S. A.J. S.L. REFERENCES: G.L.O. PLAT

WEATHER: COOL FILE: GREAT WESTERN OIL & GAS COMPANY

T6N, R67W, 6th P.M.

Bottom Hole



### LEGEND:

- = 90° SYMBOL
- = PROPOSED WELL HEAD.
- ▲ = SECTION CORNERS LOCATED.
- △ = SECTION CORNERS RE-ESTABLISHED. (Not Set on Ground.)

NAD 83 (SURFACE LOCATION)	NAD 27 (SURFACE LOCATION)
LATITUDE = 40°27'47.30" (40.463139)	LATITUDE = 40°27'47.36" (40.463156)
LONGITUDE = 104°55'10.25" (104.919508)	LONGITUDE = 104°55'08.32" (104.918978)