

The Road to Excellence Starts with Safety

Sold To #: 300721		Ship To #: 2865758		Quote #:		Sales Order #: 8320398	
Customer: WILLIAMS PRODUCTION RMT INC - EBUS				Customer Rep: MOORE, FRANK			
Well Name: RWF		Well #: 334-31		API/UWI #: 05-045-19790			
Field: Rulison		City (SAP): RIFLE		County/Parish: Garfield		State: Colorado	
Lat: N 39.475 deg. OR N 39 deg. 28 min. 30.45 secs.				Long: W 107.929 deg. OR W -108 deg. 4 min. 14.398 secs.			
Contractor: NABORS 573		Rig/Platform Name/Num: NABORS 573					
Job Purpose: Cement Surface Casing							
Well Type: Development Well				Job Type: Cement Surface Casing			
Sales Person: KOHL, KYLE		Srv Supervisor: STILLSON, ERIC		MBU ID Emp #: 393789			
Job Personnel							
HES Emp Name	Exp Hrs	Emp #	HES Emp Name	Exp Hrs	Emp #	HES Emp Name	Exp Hrs
NICKLE, RYON	4	454759	SINGLETON, AUSTIN W	4	487406	STILLSON, ERIC W	4
WEAVER, CARLTON Russell	4	457698					
Equipment							
HES Unit #	Distance-1 way	HES Unit #	Distance-1 way	HES Unit #	Distance-1 way	HES Unit #	Distance-1 way
10567589C	60 mile	10784064	60 mile	10995027	60 mile	11006314	60 mile
11259884	60 mile						
Job Hours							
Date	On Location Hours	Operating Hours	Date	On Location Hours	Operating Hours	Date	On Location Hours
08-19-11	4	1					
TOTAL		Total is the sum of each column separately					
Job				Job Times			
Formation Name				Date	Time	Time Zone	
Formation Depth (MD)	Top		Bottom	Called Out	19 - Aug - 2011	13:00	MST
Form Type		BHST		On Location	19 - Aug - 2011	16:00	MST
Job depth MD	1146. ft	Job Depth TVD	1146. ft	Job Started	19 - Aug - 2011	18:21	MST
Water Depth		Wk Ht Above Floor	4. ft	Job Completed	19 - Aug - 2011	19:13	MST
Perforation Depth (MD)	From		To	Departed Loc	19 - Aug - 2011	20:30	MST
Well Data							
Description	New / Used	Max pressure psig	Size in	ID in	Weight lbm/ft	Thread	Grade
OPEN HOLE SECTION				13.5			
SURFACE CASING	Unknown		9.625	9.001	32.3		
Sales/Rental/3 rd Party (HES)							
Description	Qty	Qty uom	Depth	Supplier			
PLUG,CMTG,TOP,9 5/8,HWE,8.16 MIN/9.06 MA	1	EA					
Tools and Accessories							
Type	Size	Qty	Make	Depth	Type	Size	Qty
Guide Shoe					Packer		
Float Shoe					Bridge Plug		
Float Collar					Retainer		
Insert Float							
Stage Tool							
Miscellaneous Materials							
Gelling Agt		Conc		Surfactant		Conc	
Treatment Fld		Conc		Inhibitor		Conc	
						Acid Type	
						Sand Type	
						Qty	
						Conc	%
						Size	Qty

Fluid Data									
Stage/Plug #: 1									
Fluid #	Stage Type	Fluid Name	Qty	Qty uom	Mixing Density lbm/gal	Yield ft ³ /sk	Mix Fluid Gal/sk	Rate bbl/min	Total Mix Fluid Gal/sk
1	Fresh Water Spacer		20.00	bbl	.	.0	.0	4	
2	Lead Cement	VERSACEM (TM) SYSTEM (452010)	160.0	sacks	12.3	2.38	13.75	8	13.75
		13.75 Gal FRESH WATER							
3	Tail Cement	VERSACEM (TM) SYSTEM (452010)	160.0	sacks	12.8	2.11	11.75	8	11.75
		11.75 Gal FRESH WATER							
		0.25 lbm POLY-E-FLAKE (101216940)							
		0.25 % FDP-C991-10, 50 LB SACK (101984055)							
4	Displacement Fluid		86.00	bbl	8.34	.0	.0	9	
Calculated Values		Pressures		Volumes					
Displacement	86.2	Shut In: Instant		Lost Returns	0	Cement Slurry	128	Pad	
Top Of Cement	SURF	5 Min		Cement Returns	10	Actual Displacement	86	Treatment	
Frac Gradient		15 Min		Spacers	20	Load and Breakdown		Total Job	
Rates									
Circulating		Mixing	8	Displacement	9	Avg. Job			8
Cement Left In Pipe	Amount	43.5 ft	Reason	Shoe Joint					
Frac Ring # 1 @	ID	Frac ring # 2 @	ID	Frac Ring # 3 @	ID	Frac Ring # 4 @	ID		
The Information Stated Herein Is Correct				Customer Representative Signature					

The Road to Excellence Starts with Safety

Sold To #: 300721	Ship To #: 2865758	Quote #:	Sales Order #: 8320398
Customer: WILLIAMS PRODUCTION RMT INC - EBUS	Customer Rep: MOORE, FRANK		
Well Name: RWF	Well #: 334-31	API/UWI #: 05-045-19790	
Field: Rulison	City (SAP): RIFLE	County/Parish: Garfield	State: Colorado
Legal Description:			
Lat: N 39.475 deg. OR N 39 deg. 28 min. 30.45 secs.		Long: W 107.929 deg. OR W -108 deg. 4 min. 14.398 secs.	
Contractor: NABORS 573	Rig/Platform Name/Num: NABORS 573		
Job Purpose: Cement Surface Casing	Ticket Amount:		
Well Type: Development Well	Job Type: Cement Surface Casing		
Sales Person: KOHL, KYLE	Srv Supervisor: STILLSON, ERIC	MBU ID Emp #: 393789	

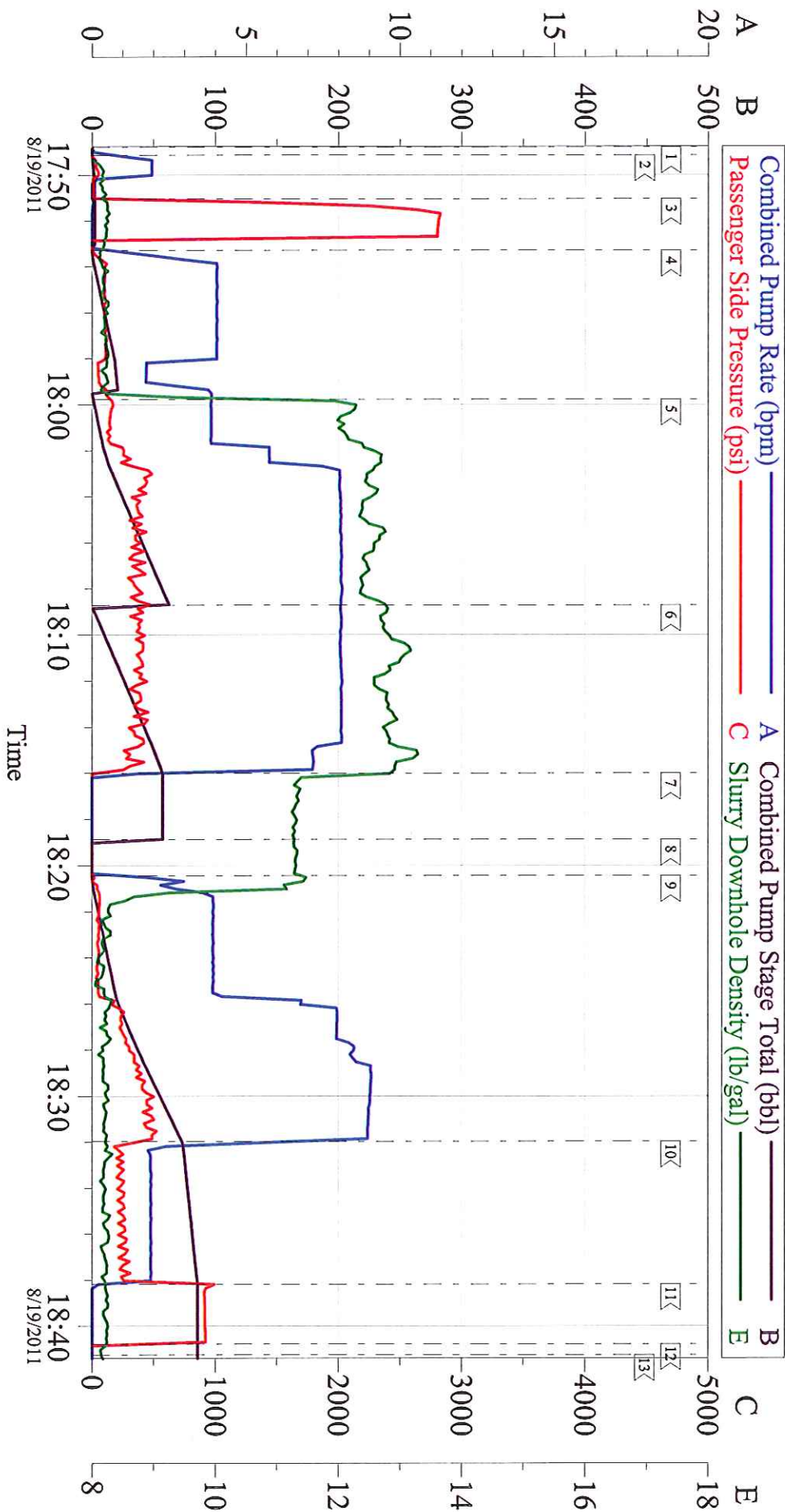
Activity Description	Date/Time	Cht #	Rate bbl/min	Volume bbl		Pressure psig		Comments
				Stage	Total	Tubing	Casing	
Call Out	08/19/2011 13:00							9 5/8 SURFACE, WILLIAMS, NABORS 573, RWF 334-31
Pre-Convoy Safety Meeting	08/19/2011 14:25							ENTIRE CREW, OBSERVE ALL SAFE DRIVING PROCEDURES
Arrive At Loc	08/19/2011 16:00							ARRIVED EARLY. RIG JUST STARTING CASING.
Assessment Of Location Safety Meeting	08/19/2011 16:30							REVIEWED EMERGENCY PLAN, ASSESSED WORK AREA AND SPOTTED EQUIPMENT.
Pre-Rig Up Safety Meeting	08/19/2011 16:50							ENTIRE CREW, WALKED THROUGH RIG UP LOOKING FOR HAZARDS.
Rig-Up Equipment	08/19/2011 17:00							1 PICK UP, 1 HT400 PUMP TRUCK, 1 660 BULK CEMENT TRUCK, 1 QUICK LATCH HEAD WITH PLUG,
Pre-Job Safety Meeting	08/19/2011 18:00							ENTIRE CREW, CO REP AND RIG CREW.
Start Job	08/19/2011 18:21							TD 1146 TP 1139 SJ 43.49 FC 1095.51 MW 10.9 PPG, 9 5/8 32.3# CASING IN 13 1/2 HOLE. RIG CIRC APPROX 1 HR
Pump Water	08/19/2011 18:21		1	1			46.0	FILL LINES BEFORE TESTING

Activity Description	Date/Time	Cht #	Rate bbl/min	Volume bbl		Pressure psig		Comments
				Stage	Total	Tubing	Casing	
Pressure Test	08/19/2011 18:23		0.5	0.1			2805.0	HELD PRESSURE FOR 2 MIN, PRESSURE HELD, NO LEAKS.
Pump Spacer 1	08/19/2011 18:25		4	20			100.0	FRESH WATER, PUMPED AT 4 BPM TO BRING CEMENT TUB UP TO WEIGHT AND WEIGH WITH SCALES
Comment	08/19/2011 18:31							WHILE PREMIXING TUB, CEMENT HEAD NOT WORKING PROPERLY, AND WOULD NOT MIX ON ADC, MIXED ENTIRE JOB ON HAND, AND TOOK ADC CHARGE OFF TICKET.
Pump Lead Cement	08/19/2011 18:32		8	67.8			380.0	160 SKS VERSACEM, 12.3 PPG, 2.38 CUFT/SK, 13.75 GAL/SK. WALKED RATE UP TO 8 BPM FROM 4 BPM.
Pump Tail Cement	08/19/2011 18:41		8	60.1			390.0	160 SKS VERSACEM, 12.8 PPG, 2.11 CUFT/SK, 11.75 GAL/SK.
Shutdown	08/19/2011 18:48							WASH UP ON TOP OF PLUG PER CO REP.
Drop Top Plug	08/19/2011 18:51							VARIIFIED PLUG LEFT CONTAINER.
Pump Displacement	08/19/2011 18:52		9	86.2			480.0	FRESH WATER, CEMENT TO SURFACE AT 76 BBLS GONE, 10 BBLS OF CEMENT TO SURFACE. USED 40 LBS SUGAR.
Slow Rate	08/19/2011 19:04		2	73			330.0	SLOWED RATE TO 2 BPM TO BUMP PLUG.
Bump Plug	08/19/2011 19:10		2	86			970.0	PLUG LANDED AT 330 PSI, BUMPED UP TO 970 PSI AND HELD FOR 3 MIN PER CO REP.

Activity Description	Date/Time	Cht #	Rate bbl/min	Volume bbl		Pressure psig		Comments
				Stage	Total	Tubing	Casing	
Check Floats	08/19/2011 19:13							FLOATS HELD, WHEN RELEASED PRESSURE GOT 1/2 BBL OF WATER BACK TO TRUCK.
End Job	08/19/2011 19:13							GOOD RETURNS THROUGHOUT, DID NOT RECIPROCATATE PIPE.
Comment	08/19/2011 19:14							THE CHART WAS PICKING UP SOME INTERFERENCE CAUSING THE LINES TO JUMP OFF THE SCREEN MULTIPLE TIMES.
Post-Job Safety Meeting (Pre Rig-Down)	08/19/2011 19:20							ENTIRE CREW
Rig-Down Equipment	08/19/2011 19:30							
Pre-Convoy Safety Meeting	08/19/2011 20:25							ENTIRE CREW, OBSERVE ALL SAFE DRIVING PROCEDURES
Crew Leave Location	08/19/2011 21:30							THANK YOU FOR USING HALLIBURTON, ERIC STILLSON AND CREW.

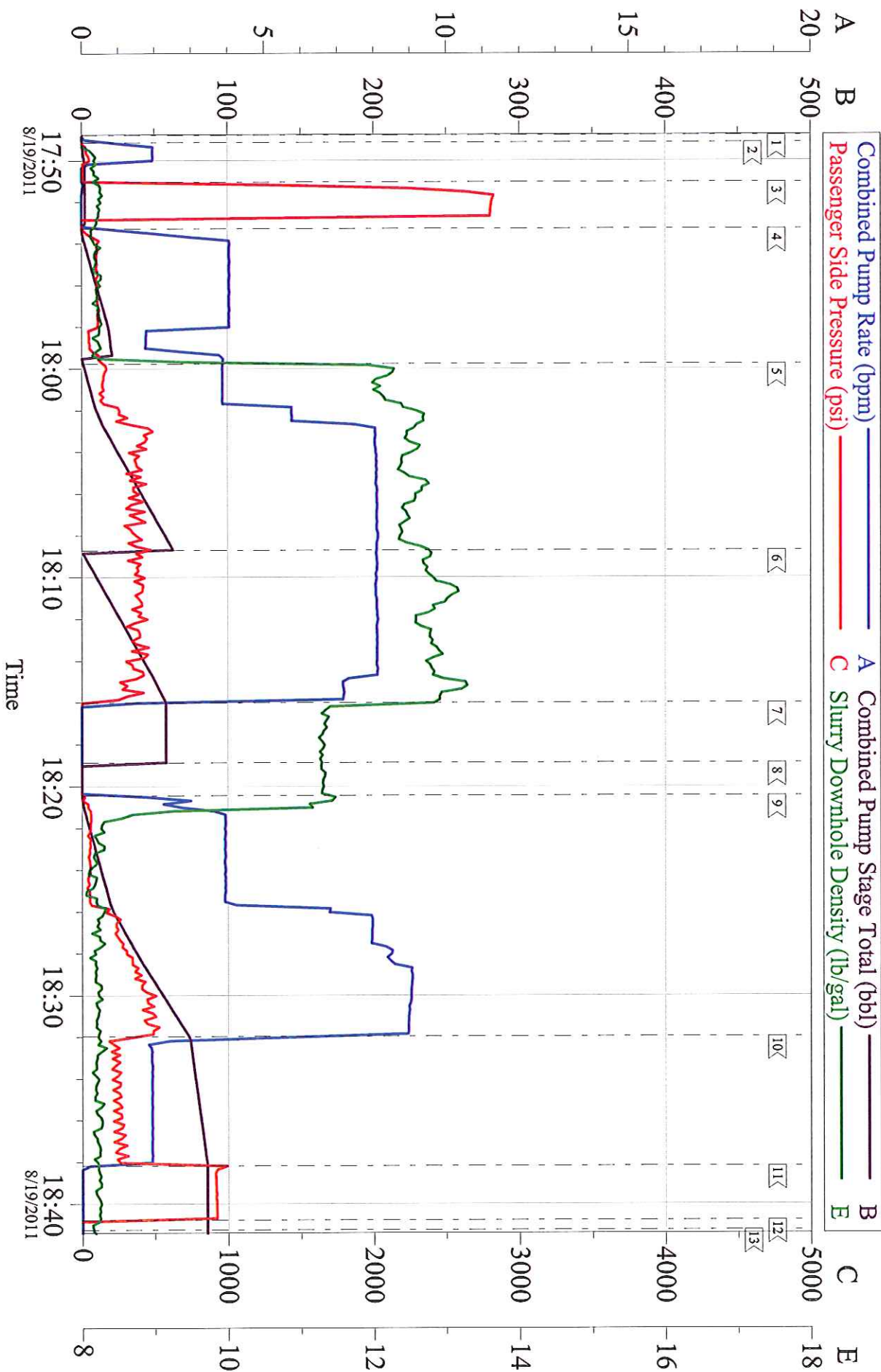
WILLIAMS

9 5/8 SURFACE



Customer:	Williams	Job Date:	19-Aug-2011	Sales Order #:	8320398
Well Description:	RWF 334-31	Job Type:	Surface	ADC Used:	NO
Company Rep	Frank Moore	Cement Supervisor:	Eric Stilson	Elite #:	3
				Rusty Weaver	

WILLIAMS 9 5/8 SURFACE



Customer: Williams
Well Description: RWF 334-31
Company Rep: Frank Moore

Job Date: 19-Aug-2011
Job Type: Surface
Cement Supervisor: Eric Stillson

Sales Order #: 8320398
ADC Used: NO
Elite #: 3 Rusty Weaver