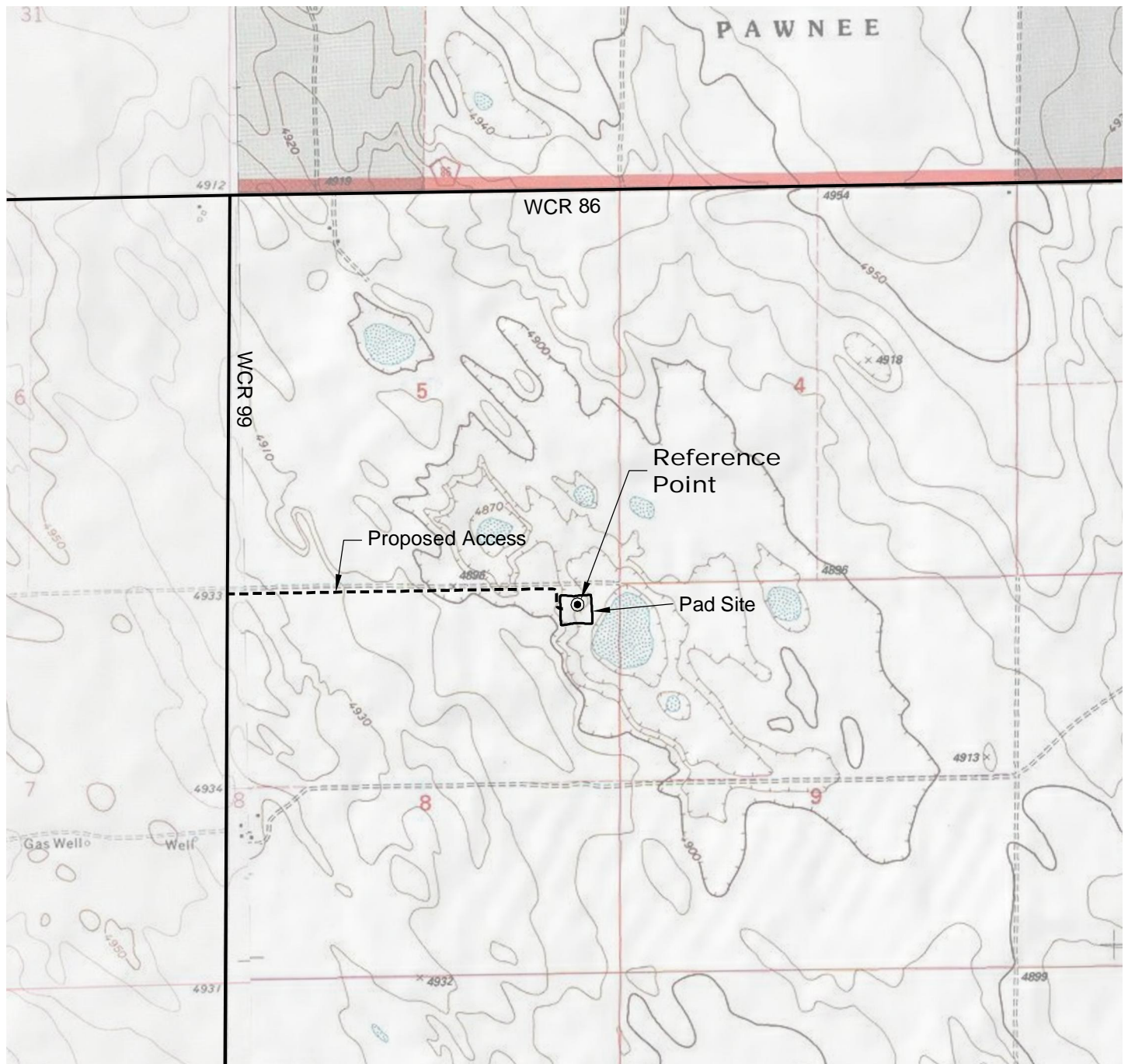


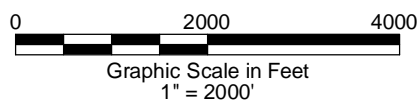
ACCESS ROAD MAP



DRIVING DIRECTIONS:

MP 0.0 - Intersection of Highway 14 a.k.a. WCR 90 & Highway 392 a.k.a. WCR 77 in Briggsdale; East on Highway 14
 MP 10.0 - Right on WCR 97
 MP 11.9 - Left on WCR 86
 MP 12.9 - Right on WCR 99
 MP 13.9 - Left onto to pad
 MP 14.8 - Pergamos 8-41-7-60 Pad

3/23/12



GEO SURV

LAND SURVEYING AND MAPPING
 LAFAYETTE - WINTER PARK
 Ph 303 666 0379 Fx 303 665 6320

CARRIZO OIL & GAS, INC
 PERGAMOS 8-41-7-60 PAD

NE1/4 NE1/4 SECTION 8 T7N R60W
6th PM WELD COUNTY COLORADO