
WILLIAMS PRODUCTION RMT INC - EBUS

**SG 413-35
PARACHUTE
Garfield County , Colorado**

Cement Surface Casing
29-Nov-2011

Post Job Summary

The Road to Excellence Starts with Safety

Sold To #: 300721		Ship To #: 2891542		Quote #:		Sales Order #: 9069451	
Customer: WILLIAMS PRODUCTION RMT INC - EBUS				Customer Rep: Geary, Scott			
Well Name: SG		Well #: 413-35		API/UWI #:			
Field: PARACHUTE		City (SAP): PARACHUTE		County/Parish: Garfield		State: Colorado	
Contractor: H&P 278		Rig/Platform Name/Num: H&P 278					
Job Purpose: Cement Surface Casing							
Well Type: Development Well				Job Type: Cement Surface Casing			
Sales Person: SCOTT, KYLE		Srcv Supervisor: JAMISON, PRICE		MBU ID Emp #: 229155			
Job Personnel							
HES Emp Name	Exp Hrs	Emp #	HES Emp Name	Exp Hrs	Emp #	HES Emp Name	Exp Hrs
DEUSSEN, EDWARD Eric	9.5	485182	JAMISON, PRICE W	9.5	229155	JENSEN, SHANE Lynn	9.5
VANALSTYNE, TROY L	9.5	420256					
Equipment							
HES Unit #	Distance-1 way	HES Unit #	Distance-1 way	HES Unit #	Distance-1 way	HES Unit #	Distance-1 way
10205677	60 mile	10784053	60 mile	11560046	60 mile	11562538	60 mile
11583934	60 mile						
Job Hours							
Date	On Location Hours	Operating Hours	Date	On Location Hours	Operating Hours	Date	On Location Hours
11/29/11	9.5	2					
TOTAL		Total is the sum of each column separately					
Job				Job Times			
Formation Name				Date	Time	Time Zone	
Formation Depth (MD)	Top	Bottom		Called Out	29 - Nov - 2011	10:00	MST
Form Type	BHST			On Location	29 - Nov - 2011	12:30	MST
Job depth MD	1013. ft	Job Depth TVD	1025. ft	Job Started	29 - Nov - 2011	20:07	MST
Water Depth		Wk Ht Above Floor	4. ft	Job Completed	29 - Nov - 2011	21:03	MST
Perforation Depth (MD)	From	To		Departed Loc	29 - Nov - 2011	22:00	MST
Well Data							
Description	New / Used	Max pressure psig	Size in	ID in	Weight lbm/ft	Thread	Grade
OPEN HOLE				13.5			
SURFACE CASING	Unknow n		9.625	9.001	32.3		H-40
Sales/Rental/3rd Party (HES)							
Description	Qty	Qty uom	Depth	Supplier			
PLUG,CMTG,TOP,9 5/8,HWE,8.16 MIN/9.06 MA	1	EA					
Tools and Accessories							
Type	Size	Qty	Make	Depth	Type	Size	Qty
Guide Shoe					Packer		
Float Shoe					Bridge Plug		
Float Collar					Retainer		
Insert Float							
Stage Tool							
Miscellaneous Materials							
Gelling Agt		Conc		Surfactant		Conc	
Treatment Fld		Conc		Inhibitor		Conc	
Fluid Data							
Stage/Plug #: 1							

HALLIBURTON***Cementing Job Summary***

Fluid #	Stage Type	Fluid Name	Qty	Qty uom	Mixing Density lbm/gal	Yield ft ³ /sk	Mix Fluid Gal/sk	Rate bbl/min	Total Mix Fluid Gal/sk
1	Fresh Water		20.00	bbl	8.33	.0	.0	6.0	
2	Tail Cement	VERSACEM (TM) SYSTEM (452010)	280.0	sacks	12.8	2.11	11.75	8.0	11.75
3	Displacement Fluid		76.4	bbl	8.34	.0	.0	10.0	
Calculated Values		Pressures		Volumes					
Displacement	76.4	Shut In: Instant		Lost Returns	NO	Cement Slurry	105	Pad	
Top Of Cement	SURFACE	5 Min		Cement Returns	15	Actual Displacement	76.4	Treatment	
Frac Gradient		15 Min		Spacers	20	Load and Breakdown		Total Job	210
Rates									
Circulating	11.9	Mixing	8	Displacement	10	Avg. Job	8		
Cement Left In Pipe	Amount	42.7 ft	Reason	Shoe Joint					
Frac Ring # 1 @	ID	Frac ring # 2 @	ID	Frac Ring # 3 @	ID	Frac Ring # 4 @	ID		
The Information Stated Herein Is Correct				Customer Representative Signature					

The Road to Excellence Starts with Safety

Sold To #: 300721	Ship To #: 2891542	Quote #:	Sales Order #: 9069451
Customer: WILLIAMS PRODUCTION RMT INC - EBUS		Customer Rep: Geary, Scott	
Well Name: SG		Well #: 413-35	API/UWI #:
Field: PARACHUTE	City (SAP): PARACHUTE	County/Parish: Garfield	State: Colorado
Legal Description:			
Lat: N 0 deg. OR N 0 deg. 0 min. 0 secs.		Long: E 0 deg. OR E 0 deg. 0 min. 0 secs.	
Contractor: H&P 278		Rig/Platform Name/Num: H&P 278	
Job Purpose: Cement Surface Casing			Ticket Amount:
Well Type: Development Well		Job Type: Cement Surface Casing	
Sales Person: SCOTT, KYLE		Srv Supervisor: JAMISON, PRICE	MBU ID Emp #: 229155

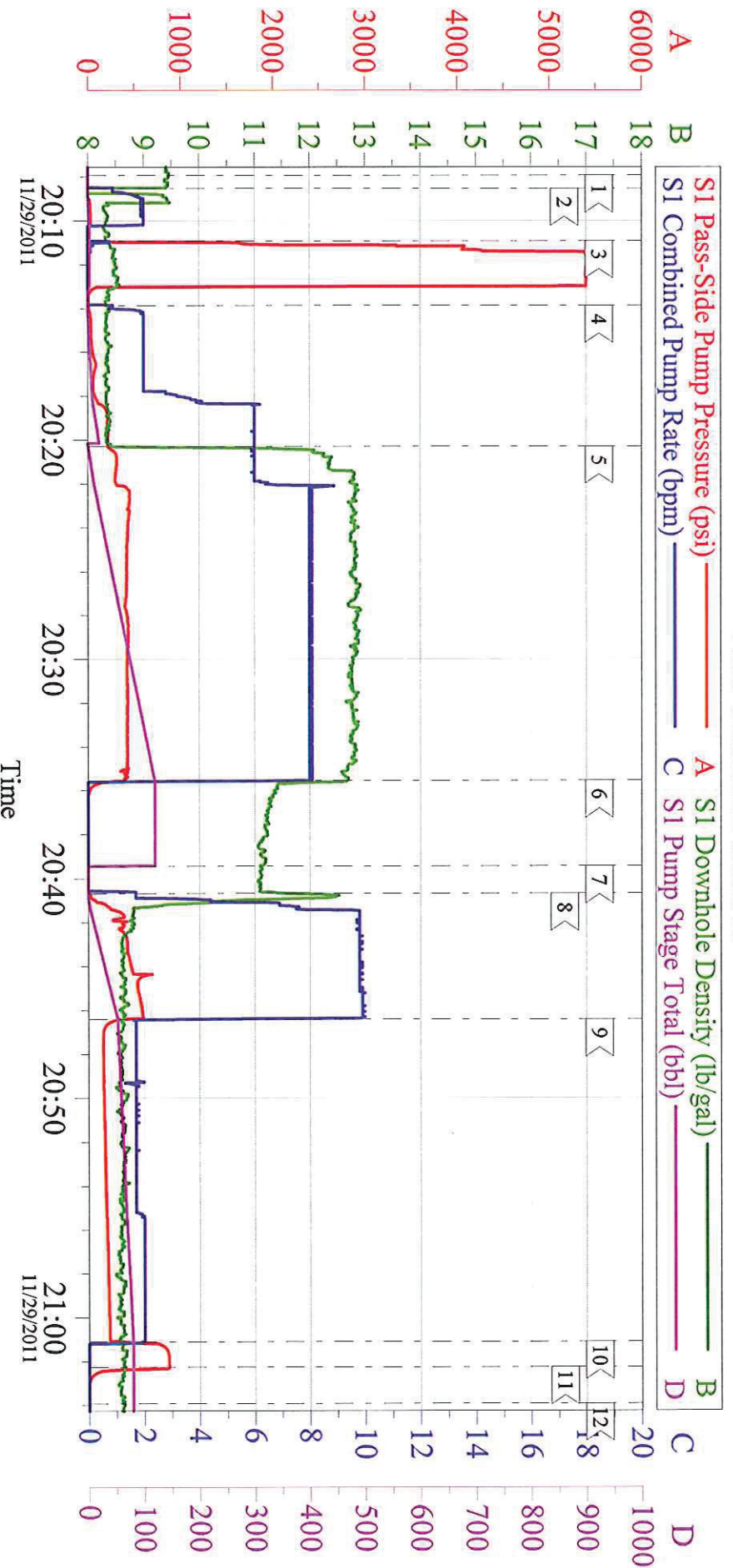
Activity Description	Date/Time	Cht #	Rate bbl/min	Volume bbl		Pressure psig		Comments
				Stage	Total	Tubing	Casing	
Call Out	11/29/2011 10:00							TD 1025 TP 1013 SJ 42.7 CASING 32.3 PPF HOLE SIZE 13.5 MUD 9.7 PPG
Depart Yard Safety Meeting	11/29/2011 11:20							
Crew Leave Yard	11/29/2011 11:30							
Arrive At Loc	11/29/2011 12:30							
Assessment Of Location Safety Meeting	11/29/2011 12:40							
Wait on Customer or Customer Sub-Contractor Equip	11/29/2011 15:00							RUNNING CASING
Wait on Customer or Customer Sub-Contractor Equipm	11/29/2011 18:59							
Pre-Rig Up Safety Meeting	11/29/2011 19:00							
Pre-Job Safety Meeting	11/29/2011 19:35							
Start Job	11/29/2011 20:07							
Prime Pumps	11/29/2011 20:08		2	2			29.0	FRESH WATER
Test Lines	11/29/2011 20:10						5000.0	
Pump Water	11/29/2011 20:13		6	20			220.0	FRESH WATER
Pump Cement	11/29/2011 20:20		8	105.2			451.0	MIXED @ 12.8 PPG YIELD 2.11 WAT/REQ 11.75 280 SKS
Shutdown	11/29/2011 20:35							

Cementing Job Log

Activity Description	Date/Time	Cht #	Rate bbl/ min	Volume bbl		Pressure psig		Comments
				Stage	Total	Tubing	Casing	
Drop Plug	11/29/2011 20:39							
Pump Displacement	11/29/2011 20:40		10					FRESH WATER
Slow Rate	11/29/2011 20:46		2	66			500.0	
Bump Plug	11/29/2011 21:01		2	76.4			227.0	PRESSURED UP TO 864 PSI
Check Floats	11/29/2011 21:02							FLOATS HELD
End Job	11/29/2011 21:03							CEMENT BACK TO SURFACE 15 BBLS
Post-Job Safety Meeting (Pre Rig-Down)	11/29/2011 21:15							GOOD CIRCULATION THROUGHOUT JOB
Depart Location Safety Meeting	11/29/2011 21:50							CASING WAS BEING MOVED THROUGHOUT JOB
Crew Leave Location	11/29/2011 22:00							THANKS FOR USING HALLIBURTON BILL JAMISON & CREW

WILLIAMS SG 413-35

9.625 SURFACE CASING

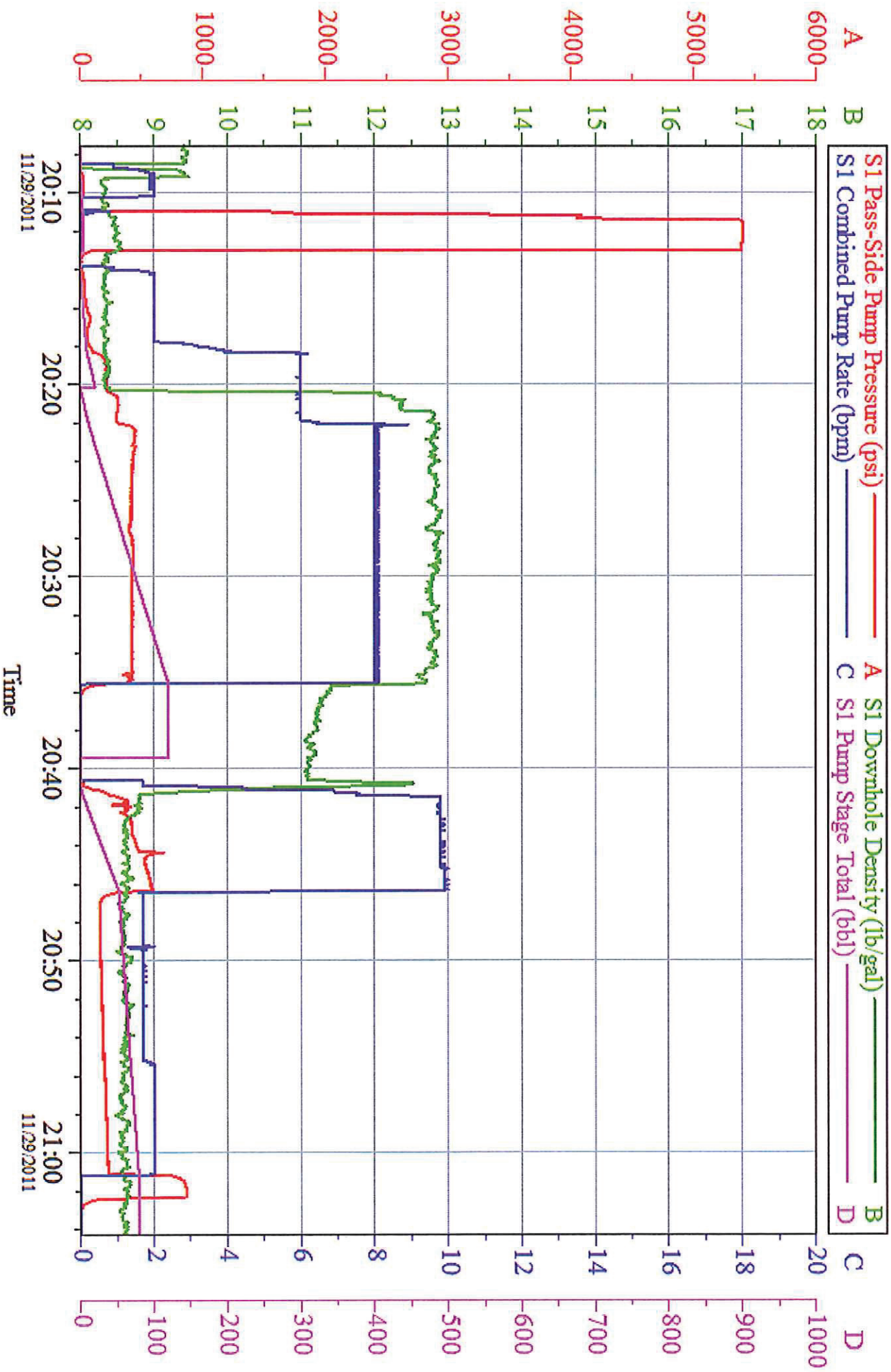


Customer: WILLIAMS
Well Description: SG 413-35
Company Rep: SCOTT GEARY

Job Date: 29-Nov-2011
Job Type: CEMENT
Cement Supervisor: BILL JAMISON

Sales Order #: 9069451
ADC Used: YES
Elite #: 5 ED DEUSSEN

WILLIAMS SG 413-35 9.625 SURFACE CASING



Customer: WILLIAMS
Well Description: SG 413-35
Company Rep: SCOTT GEARY

Job Date: 29-Nov-2011
Job Type: CEMENT
Cement Supervisor: BILL JAMISON

Sales Order #: 9069451
ADC Used: YES
File #: 5
ED DEUSSEN