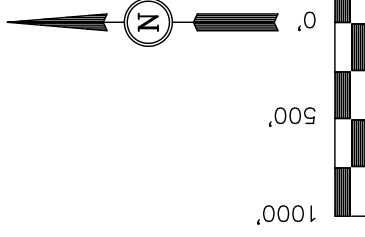


AXIA ENERGY

BASIS OF ELEVATION

BASIS OF BEARINGS

BASIS OF BEARINGS IS A G.P.S. OBSERVATION.

S C A L E
C E R T I F I C A T E

THIS IS TO CERTIFY THAT THE ABOVE PLAT WAS PREPARED FROM
FIELD NOTES OF ACTUAL SURVEYS MADE BY ME OR UNDER MY
SUPERVISION AND THAT THE SAME ARE TRUE AND CORRECT TO THE
BEST OF MY KNOWLEDGE AND BELIEF

Set Marked Stone
N-S Fence
Lat: 40.608597
Long: 107.904719

REVISÉ: 02-15-12

UTAH ENGINEERING & LAND SURVEYING

85 SOUTH 200 EAST - VERNAL, UTAH 84078

(435) 789-1017

SCALE	1" = 100'	DATE SURVEYED:	DATE DRAWN:
PARTY	B.H. N.F. Z.L.	REFERENCES	02-08-12
WEATHER	COLD	FILE	
		AXIA ENERGY	

$$\text{PDOP} = 1.3$$

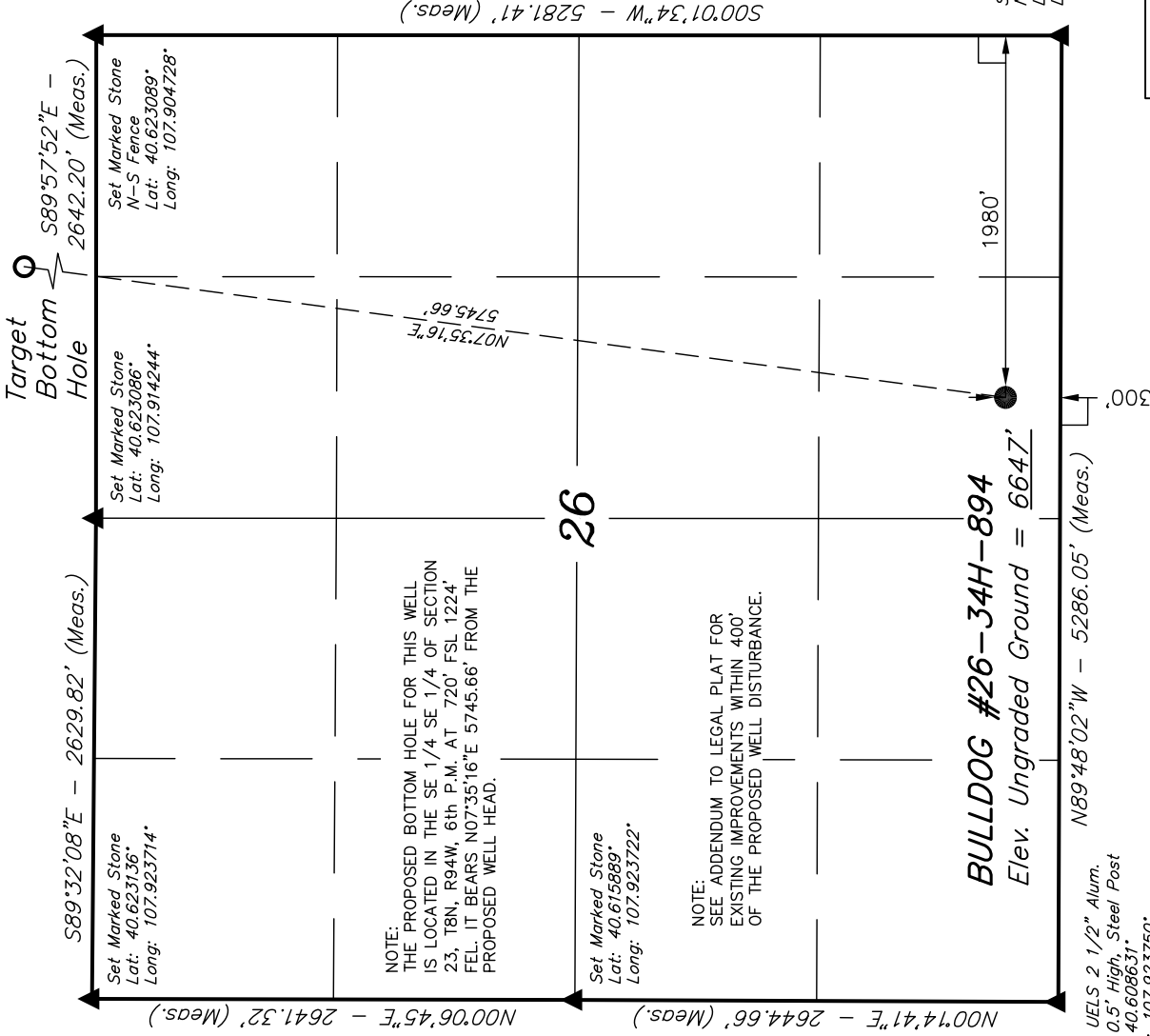
NAD 83 (SURFACE LOCATION)	
LATITUDE =	40°36'33.96" (40.609433)
LONGITUDE =	107°54'42.65" (107.911847)
NAD 27 (SURFACE LOCATION)	
LATITUDE =	40°36'34.07" (40.609464)
LONGITUDE =	107°54'40.37" (107.911214)
STATE PLANE NAD 83	
N: 1473964.48	E: 2350433.34
STATE PLANE NAD 27	
N: 473963.03	E: 1330591.64

LEGEND:

$\angle = 90^\circ$ SYMBOL

● = PROPOSED WELL HEAD.

▲ = SECTION CORNERS LOCATED.



T8N, R94W, 6th P.M.

AXIA ENERGY

Well location, BULLDOG #26-34H-894 (TARGET BOTTOM HOLE) located as shown in the SE 1/4 SE 1/4 of Section 23, T8N, R94W, 6th P.M., Moffat County, Colorado.

BASIS OF ELEVATION

SPOT ELEVATION LOCATED AT THE NORTHEAST CORNER OF SECTION 10, T6N, R93W, 6th. P.M., TAKEN FROM THE HORSE GULCH QUADRANGLE, COLORADO, MOFFAT COUNTY, 7.5 MINUTE QUAD. (TOPOGRAPHIC MAP) PUBLISHED BY THE UNITED STATES DEPARTMENT OF THE INTERIOR, GEOLOGICAL SURVEY. SAID ELEVATION IS MARKED AS BEING 6246 FEET.

BASIS OF BEARINGS

BASIS OF BEARINGS IS A G.P.S. OBSERVATION.

N89°56'W - 5273.40' (G.L.O.)

NOTE:

THE PROPOSED BOTTOM HOLE BEARS N07°35'16"E 5745.66' FROM THE PROPOSED WELL HEAD WHICH IS LOCATED IN SW 1/4 SE 1/4 OF SECTION 26, T8N, R94W, 6th P.M. AT A DISTANCE OF 300' FSL 1980' FEL.

23

N00°02'W - 5280.00' (G.L.O.)

Set Marked Stone
Lat: 40.630328°
Long: 107.904731°

N00°02'24"E - 2637.92' (Meas.)

Target
Bottom
Hole

Set Marked Stone
Lat: 40.623136°
Long: 107.923714°

S89°32'08"E - 2629.82' (Meas.)

Set Marked Stone
Lat: 40.623086°
Long: 107.914244°

Set Marked Stone
N-S Fence
Lat: 40.623089°
Long: 107.904728°

S89°57'52"E -
2642.20' (Meas.)

S74°56'16"E

LEGEND:

— = 90° SYMBOL

● = PROPOSED WELL HEAD. Surface Location

▲ = SECTION CORNERS LOCATED.

BULLDOG #26-34H-894
Surface Location

NAD 83 (TARGET BOTTOM HOLE)

LATITUDE = 40°37'30.20" (40.625056)
LONGITUDE = 107°54'32.95" (107.909153)

NAD 27 (TARGET BOTTOM HOLE)

LATITUDE = 40°37'30.31" (40.625086)
LONGITUDE = 107°54'30.67" (107.908519)

STATE PLANE NAD 83

N: 1479633.48 E: 2331335.79

STATE PLANE NAD 27
N: 479631.98 E: 1331494.06

REVISED: 02-15-12

UINTAH ENGINEERING & LAND SURVEYING
85 SOUTH 200 EAST - VERNAL, UTAH 84078
(435) 789-1017

SCALE
1" = 1000'
DATE SURVEYED: 02-02-12
DATE DRAWN: 02-08-12

PARTY
B.H. N.F. Z.L.
REFERENCES
G.L.O. PLAT

WEATHER
COLD
FILE

AXIA ENERGY

1000'
500'
0'
500'
1000'

S C A L E
CERTIFICATE

THIS IS TO CERTIFY THAT THE ABOVE PLAT WAS PREPARED FROM FIELD NOTES OF ACTUAL SURVEYS MADE BY ME OR UNDER MY SUPERVISION AND THAT THE SAME ARE TRUE AND CORRECT TO THE BEST OF MY KNOWLEDGE AND BELIEF.

ERT L
02-15-12
REGISTERED LAND SURVEYOR
REGISTRATION NO. 17492
STATE OF COLORADO