

QUICKSILVER RESOURCES, INC.

CONSTRUCTION LAYOUT FOR

SIMOES #12-30

SECTION 30, T6N, R90W, 6th P.M.

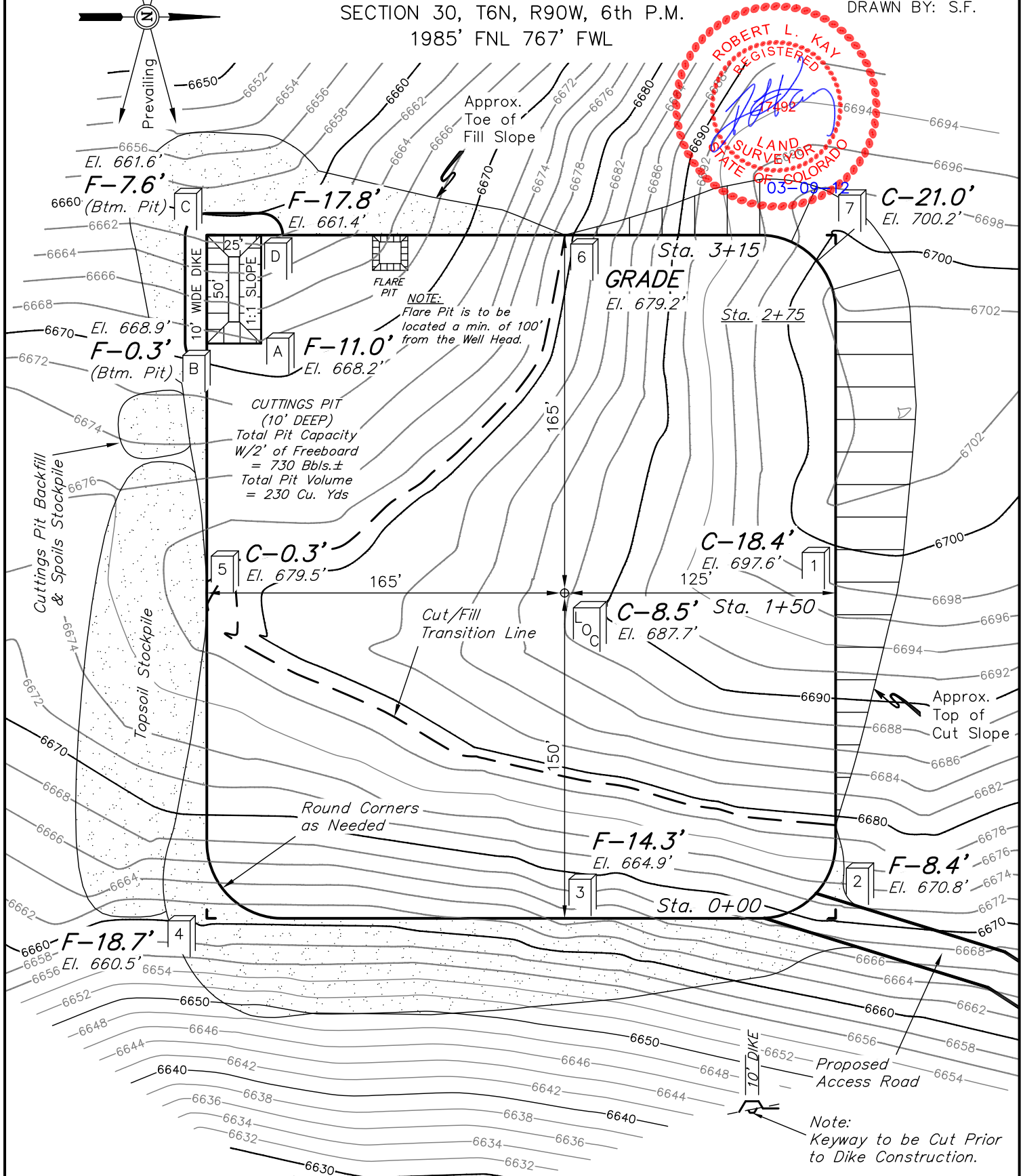
1985' FNL 767' FWL

FIGURE #1

SCALE: 1" = 60'

DATE: 03-07-12

DRAWN BY: S.F.



Elev. Ungraded Ground At Loc. Stake = 6687.7'
FINISHED GRADE ELEV. AT LOC. STAKE = 6679.2'

UINTAH ENGINEERING & LAND SURVEYING
85 So. 200 East * Vernal, Utah 84078 * (435) 789-1017

QUICKSILVER RESOURCES, INC.

CONSTRUCTION LAYOUT CROSS SECTIONS FOR

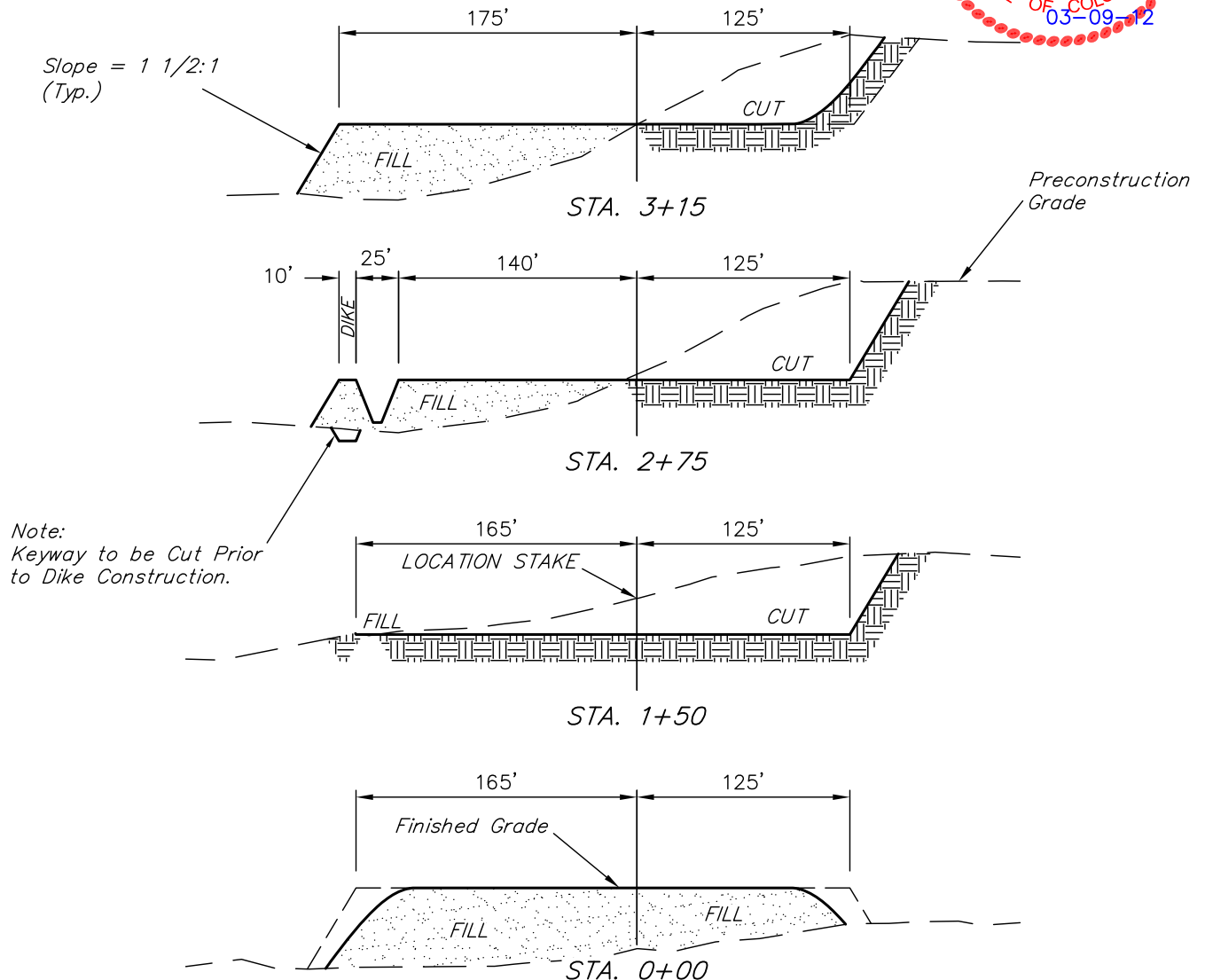
SIMOES #12-30

SECTION 30, T6N, R90W, 6th P.M.

1985' FNL 767' FWL

FIGURE #2

1" = 40'
X-Section
Scale
1" = 100'
DATE: 03-07-12
DRAWN BY: S.F.



NOTE:

Topsoil should not be Stripped Below Finished Grade on Substructure Area.

APPROXIMATE ACREAGES

WELL SITE DISTURBANCE = ± 3.012 ACRES
ACCESS ROAD DISTURBANCE = ± 1.393 ACRES
TOTAL = ± 4.405 ACRES

* NOTE:
FILL QUANTITY INCLUDES 5% FOR COMPACTION

APPROXIMATE YARDAGES

(6") Topsoil Stripping = 2,370 Cu. Yds.
Remaining Location = 18,640 Cu. Yds.
TOTAL CUT = 21,010 CU. YDS.
FILL = 18,520 CU. YDS.

EXCESS MATERIAL = 2,490 Cu. Yds.
Topsoil & Pit Backfill = 2,490 Cu. Yds.
(1/2 Pit Vol.)
EXCESS UNBALANCE = 0 Cu. Yds.
(After Interim Rehabilitation)

UINTAH ENGINEERING & LAND SURVEYING
85 So. 200 East * Vernal, Utah 84078 * (435) 789-1017