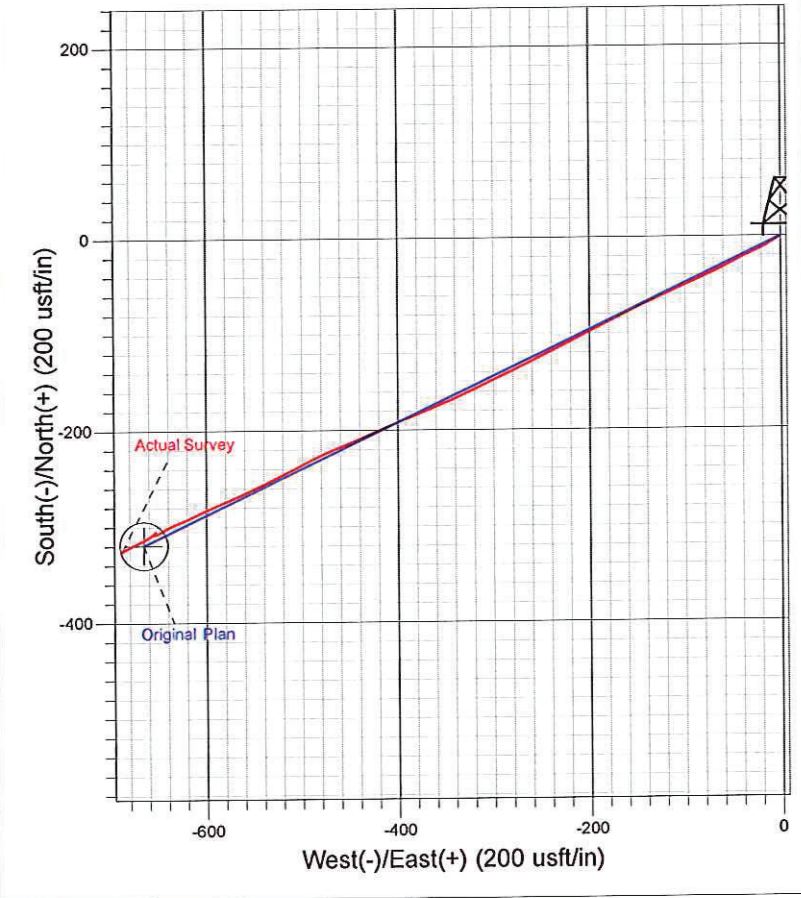
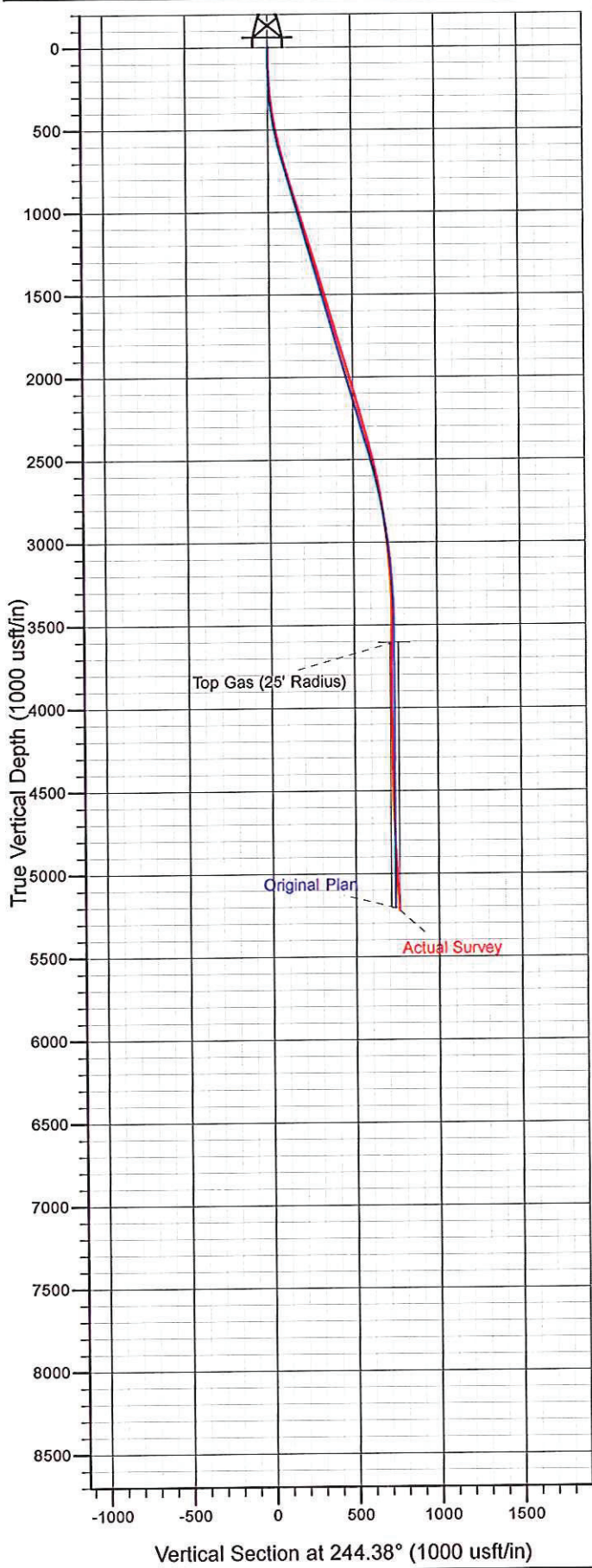




Surface Location: SG 14-23 Pad
North American Datum 1983 , US State Plane 1983 . Colorado Central Zone
Ground Elevation: 5070.00

+N/-S	+E/-W	Northing	Easting	Latitude	Longitude	Slot
0.00	0.00	1587594.90	2269423.30	39° 25' 5.375 N	108° 5' 10.848 W	A4

KELLY BUSHING @ 5094.00usft (H&P 280 (24' RKB) kjs)



Azimuths to True North
Magnetic North: 10.32°

Magnetic Field
Strength: 52154.9snT
Dip Angle: 65.65°
Date: 12/6/2011
Model: IGRF2010