

# GREAT WESTERN OIL & GAS COMPANY

## BOTTOM HOLE DRAWING FOR

H-Y #29-21, #20-23, #20-24, #20-53, #29-21-4,  
#29-52, #20-23-18, #29-21-3, #20-34, #29-31-2,  
#29-31, #29-51, #29-31-8 & #20-54

SECTION 29, T6N, R67W, 6th P.M.

NE 1/4 NW 1/4

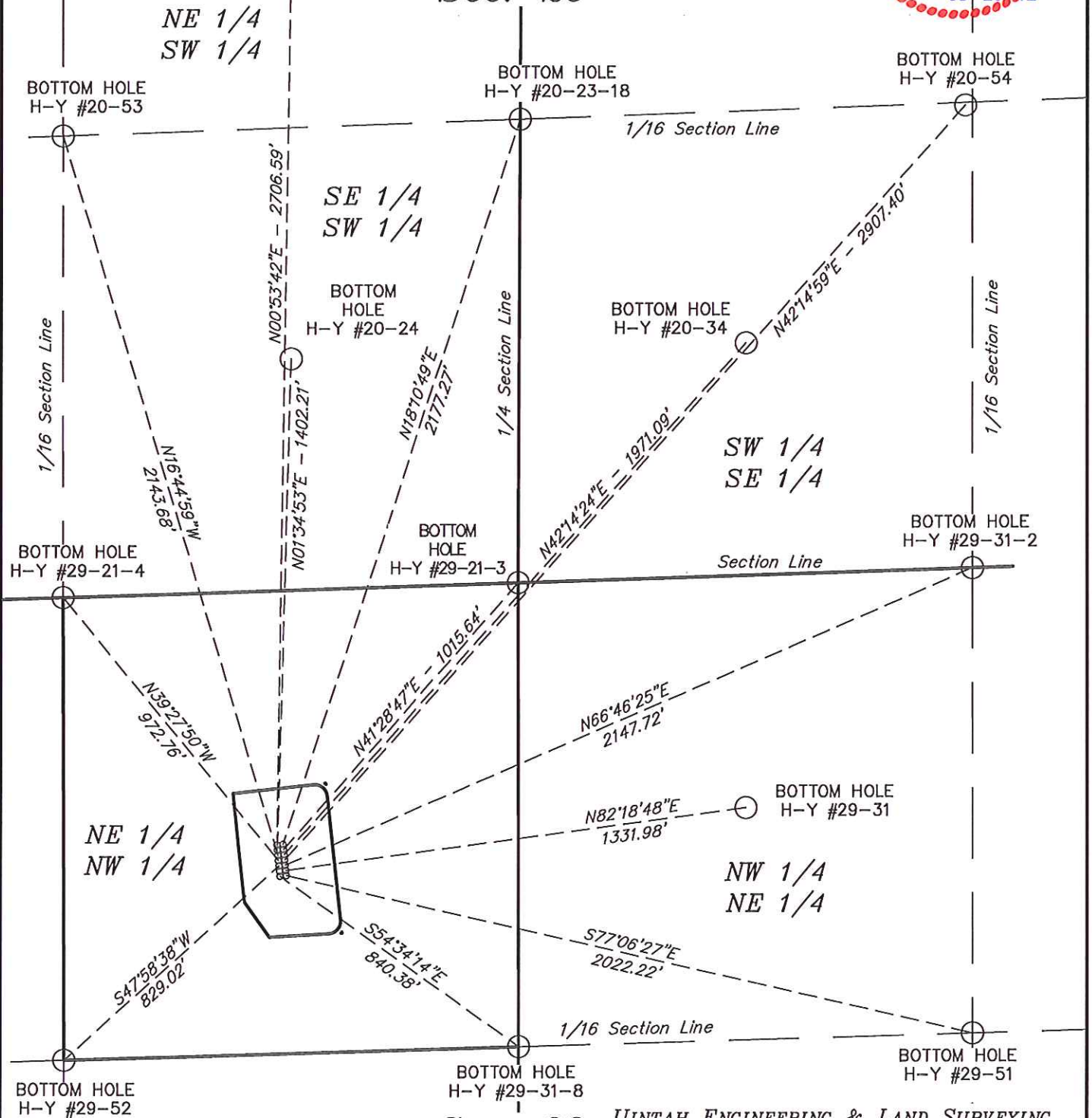
FIGURE #6

SCALE: 1" = 400'  
DATE: 03-26-12  
DRAWN BY: B.L.B.

①  
BOTTOM HOLE  
H-Y #20-23



Sec. 20



Sec. 29

UINTAH ENGINEERING & LAND SURVEYING  
85 So. 200 East \* Vernal, Utah 84078 \* (435) 789-1017