

# GREAT WESTERN OIL & GAS COMPANY

## CONSTRUCTION LAYOUT FOR

H-Y #29-21, #20-23, #20-24, #20-53, #29-21-4,  
#29-52, #20-23-18, #29-21-3, #20-34, #29-31-2,  
#29-31, #29-51, #29-31-8 & #20-54

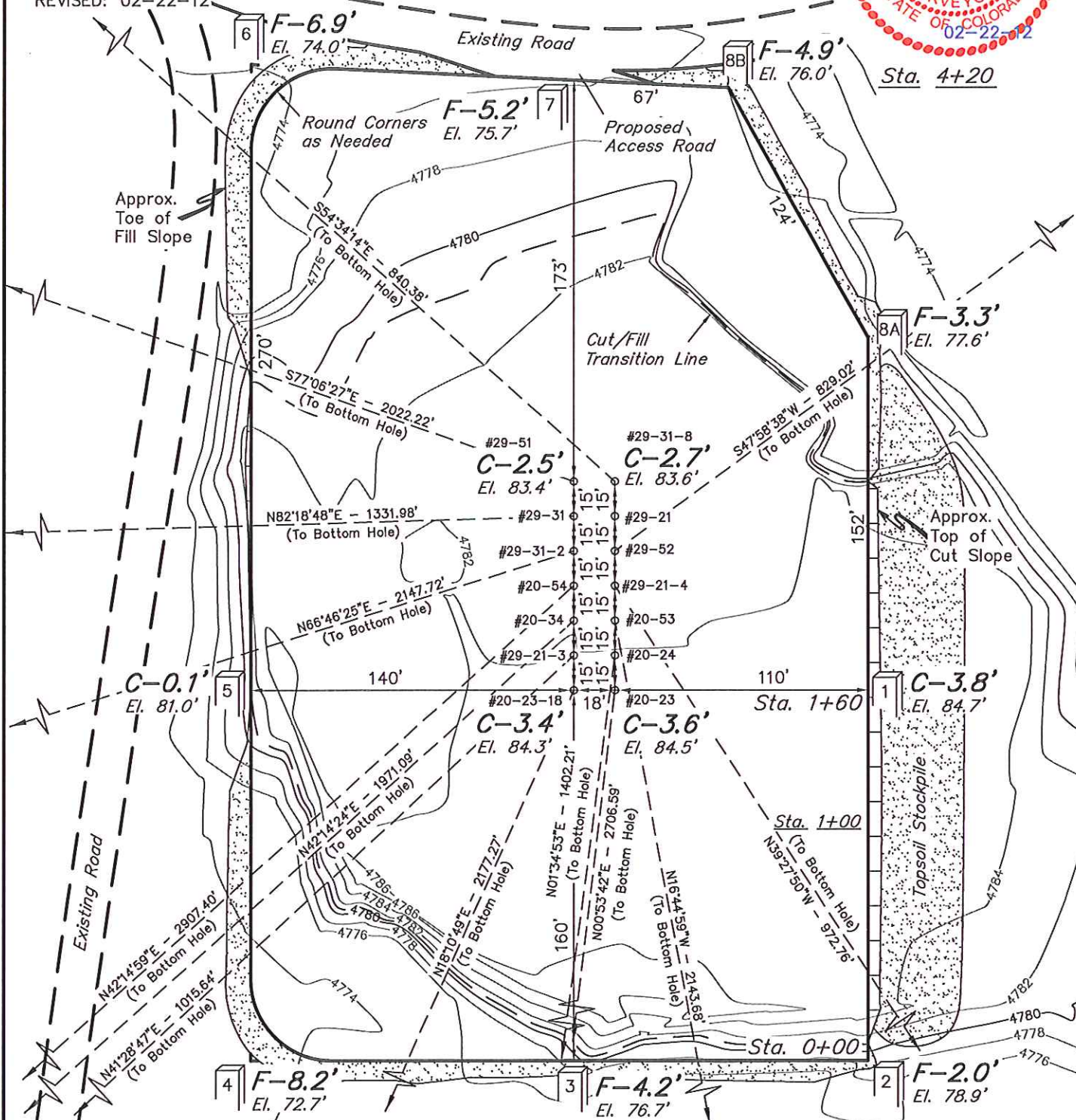
SECTION 29, T6N, R67W, 6th P.M.

NE 1/4 NW 1/4

FIGURE #1



SCALE: 1" = 60'  
DATE: 02-10-12  
DRAWN BY: S.L.  
REVISED: 02-22-12



Elev. Ungraded Ground At #29-21 Loc. Stake = 4783.8'  
FINISHED GRADE ELEV. AT #29-21 LOC. STAKE = 4780.9'

UINTAH ENGINEERING & LAND SURVEYING  
85 So. 200 East \* Vernal, Utah 84078 \* (435) 789-1017

# GREAT WESTERN OIL & GAS COMPANY

## CONSTRUCTION LAYOUT CROSS SECTIONS FOR

H-Y #29-21, #20-23, #20-24, #20-53, #29-21-4,  
#29-52, #20-23-18, #29-21-3, #20-34, #29-31-2,  
#29-31, #29-51, #29-31-8 & #20-54

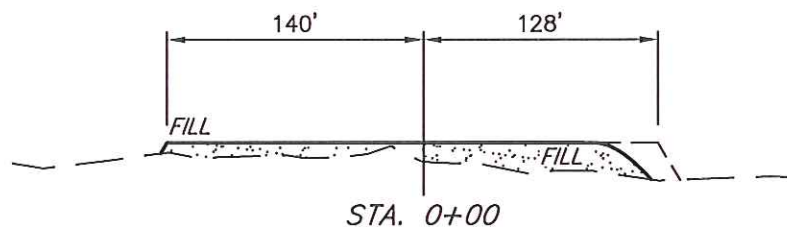
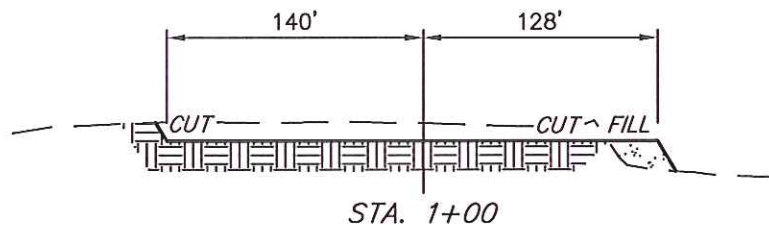
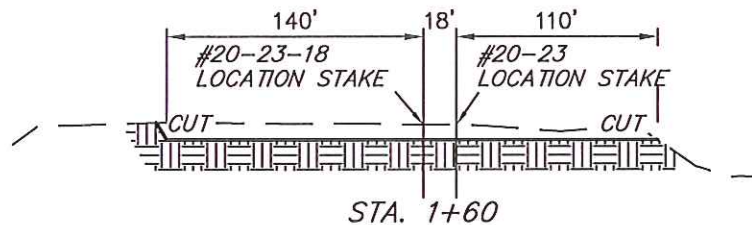
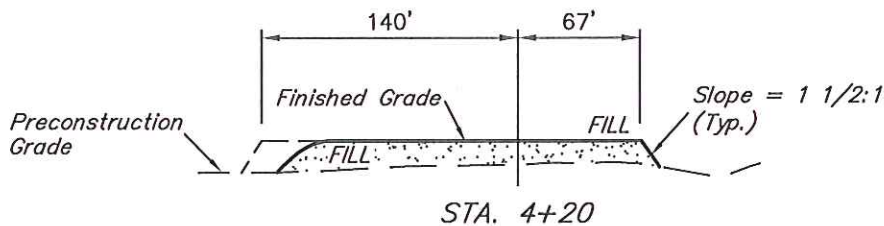
SECTION 29, T6N, R67W, 6th P.M.

NE 1/4 NW 1/4

FIGURE #2

1" = 40'  
X-Section  
Scale  
1" = 100'

DATE: 02-10-12  
DRAWN BY: S.L.  
REVISED: 02-22-12



### NOTE:

Topsoil should not be  
Stripped Below Finished  
Grade on Substructure Area.

\* NOTE:  
FILL QUANTITY INCLUDES  
5% FOR COMPACTION

APPROXIMATE ACREAGES  
WELL SITE DISTURBANCE = ± 2.597 ACRES  
ACCESS ROAD DISTURBANCE = ± 0.048 ACRES  
TOTAL = ± 2.645 ACRES

### APPROXIMATE YARDAGES

(6") Topsoil Stripping	= 2,250 Cu. Yds.	EXCESS MATERIAL	= 2,250 Cu. Yds.
Remaining Location	= 6,640 Cu. Yds.	Topsoil	= 2,250 Cu. Yds.
TOTAL CUT	= 8,890 CU.YDS.	EXCESS UNBALANCE	= 0 Cu. Yds.
FILL	= 6,640 CU.YDS.	(After Interim Rehabilitation)	

UINTAH ENGINEERING & LAND SURVEYING  
85 So. 200 East \* Vernal, Utah 84078 \* (435) 789-1017