

**CONFIDENTIALITY NOTES:**  
The information contained in this plat is legally privileged and confidential information intended only for the use of the recipients. If you are not the intended recipients, you are hereby notified that any use, dissemination, distribution or copying of this information is strictly prohibited.

**WILLIAM H. SMITH & ASSOCIATES P.C.**  
SURVEYING CONSULTANTS  
550 EAST SECOND NORTH GREEN RIVER, WY  
PHONE: 307-875-3638 307-875-3639  
www.wsmithpc.com

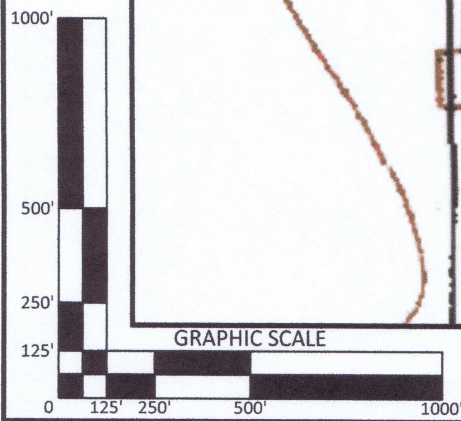
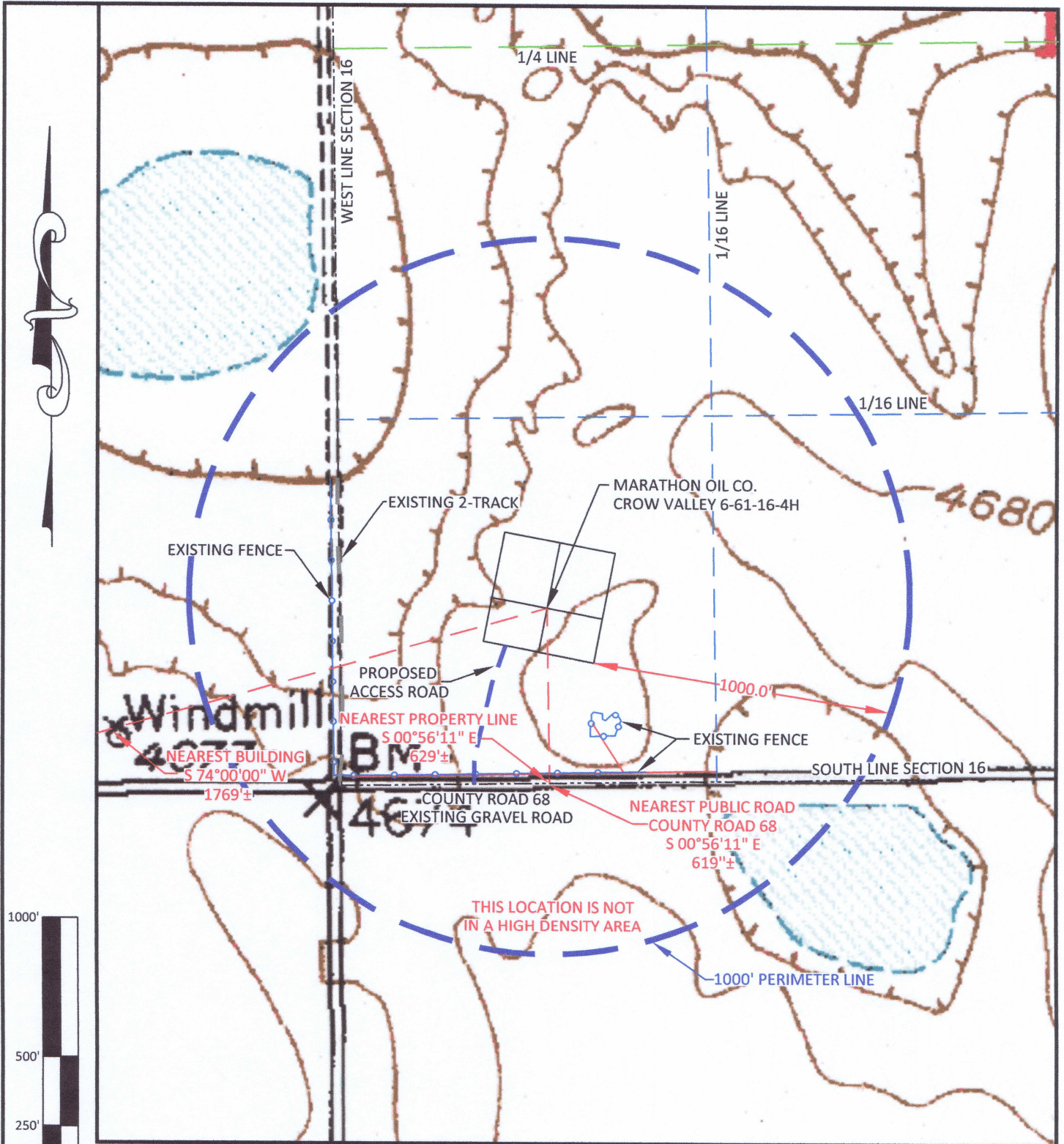
LEGEND	
400' PERIMETER	
PROPOSED ACCESS	
EXISTING ROAD	
EXISTING FENCE	
EXISTING OHP	
SECTION LINE	
1/16 LINE	

**LOCATION:**  
CROW VALLEY  
6-61-16-4H  
WITHIN SW/4 SW/4  
SECTION 16,  
T 6 N, R 61 W,  
6TH PM.  
WELD COUNTY,  
COLORADO

**MARATHON OIL COMPANY**  
PO BOX 3128, HOUSTON TX, 77253  
5555 SAN FELIPE, HOUSTON TX, 77056

DRAWN BY: IBB	CHECKED BY: RAW
PROJECT NO: 661164H	JOB NO: 2011001
REVISIONS:	

LOCATION DRAWING	
SCALE: 1"=200'	EXHIBIT "C"
DATE: 3/14/2012	SHEET 2 OF 14



**CONFIDENTIALITY NOTES:**  
 The information contained in this plat is legally privileged and confidential information intended only for the use of the recipients. If you are not the intended recipients, you are hereby notified that any use, dissemination, distribution or copying of this information is strictly prohibited.

**WILLIAM H. SMITH & ASSOCIATES P.C.**  
 SURVEYING CONSULTANTS  
 550 EAST SECOND NORTH GREEN RIVER, WY  
 PHONE: 307-875-3638  
 307-875-3639  
 www.whsmithpc.com

LEGEND	
1000' RADIUS	
PROPOSED ACCESS	
EXISTING 2-TRACK	
FENCE	
1/16 LINE	
1/4 LINE	
SECTION LINE	

**LOCATION:**  
 CROW VALLEY 6-61-16-4H  
 WITHIN SW/4 SW/4 SECTION 16,  
 T 6 N, R 61 W,  
 6TH PM.  
 WELD COUNTY,  
 COLORADO

**MARATHON OIL COMPANY**  
 PO BOX 3128, HOUSTON TX, 77253  
 5555 SAN FELIPE, HOUSTON TX, 77056

DRAWN BY: IBB	CHECKED BY: RAW
PROJECT NO: 661164H	JOB NO: 2011001
REVISIONS:	

CULTURE MAP	
SCALE: 1"=500'	EXHIBIT "H"
DATE: 3/14/2012	SHEET 7 OF 14