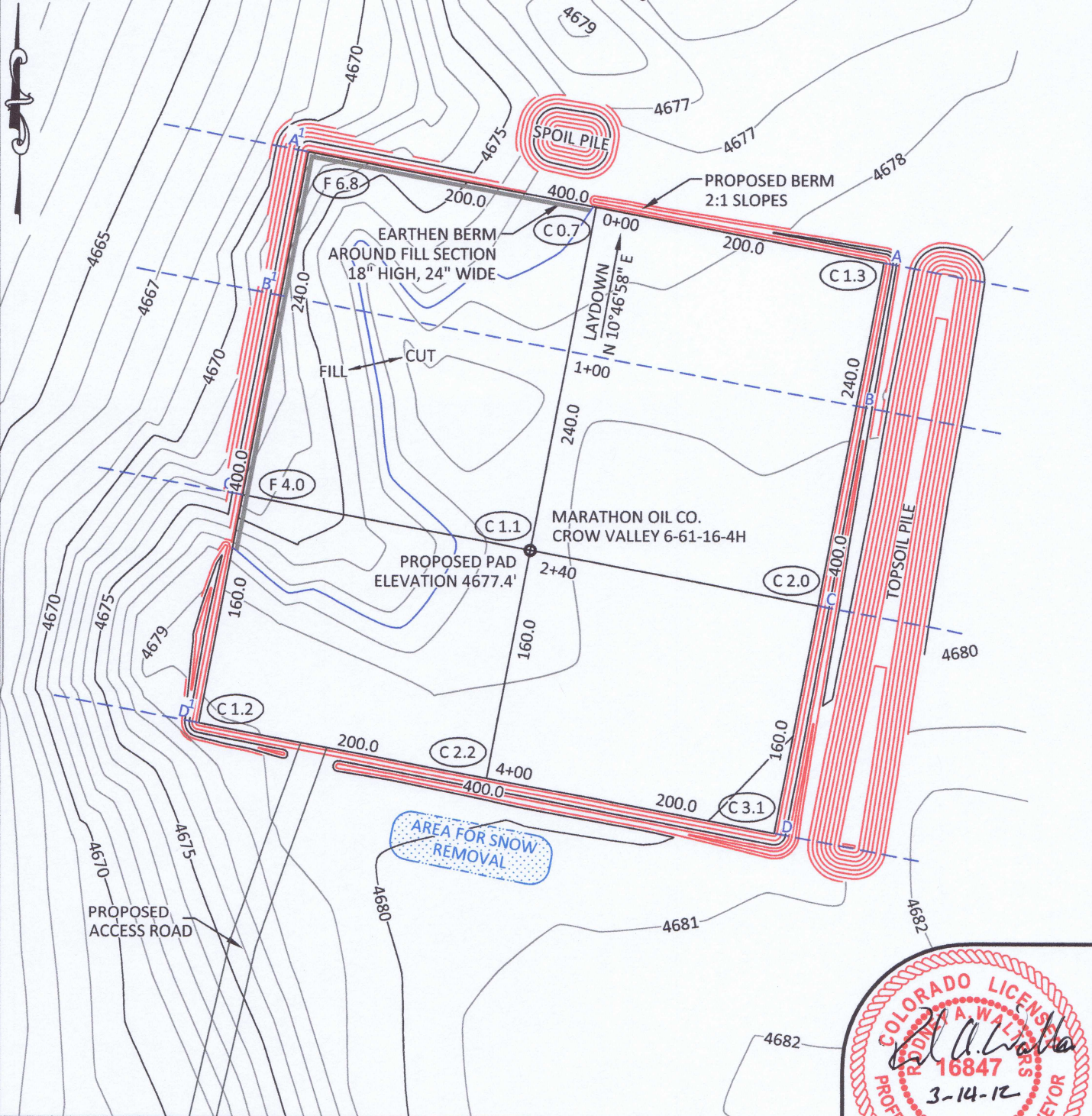


SCALE: 1" = 100'  
 CONTOUR  
 INTERVAL 1'



**NOTES:**

- Elevation of pad shown on plans are to constructed pad without final gravel padding placement. Depth, volume, and padding material to be determined by operator.
- The information contained in this plat is legally privileged and confidential information intended only for the use of the recipients. If you are not the intended recipients, you are hereby notified that any use, dissemination, distribution or copying of this information is strictly prohibited.



**WILLIAM H. SMITH  
 & ASSOCIATES P.C.**  
 SURVEYING CONSULTANTS  
 550 EAST SECOND NORTH PHONE: 307-875-3638  
 GREEN RIVER, WY 307-875-3639  
 www.whsmithpc.com

DRAWN BY: IBB CHECKED BY: RAW  
 PROJECT NO: 661164H JOB NO: 2011001  
 REVISIONS:

**CONSTRUCTION DATA**

CUT SLOPE:	3:1
FILL SLOPE:	3:1
TOTAL CUT:	8,206 CU. YDS.
TOTAL FILL:	4,484 CU. YDS.
TOP SOIL AT 6"	3,384 CU. YDS.
SPOIL:	338 CU. YDS.
DISTURBED AREA	182,745 SQ. FT.
DISTURBED AREA	4.20 ACRES

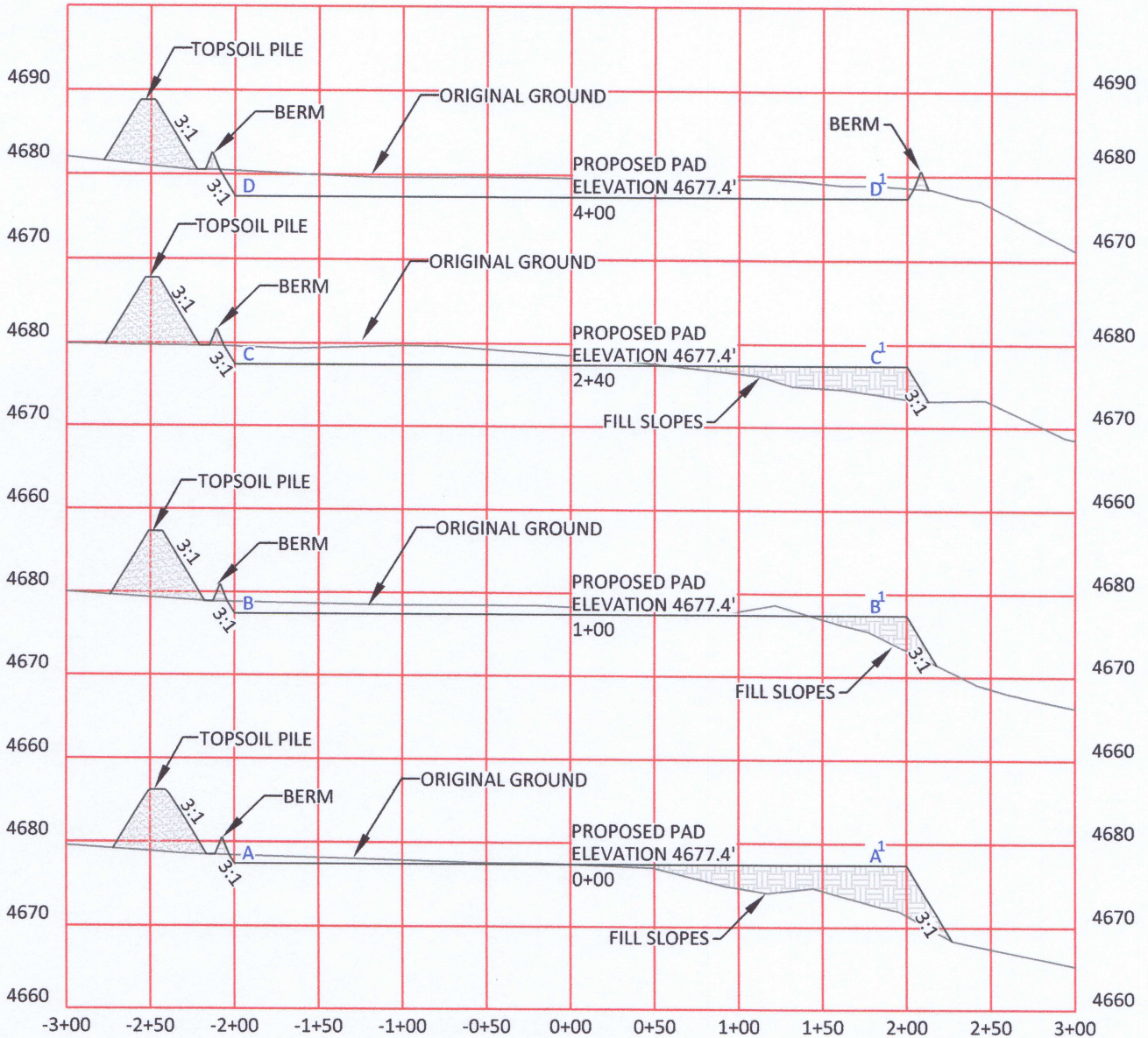
**LOCATION:**

CROW VALLEY  
 6-61-16-4H  
 WITHIN SW/4  
 SW/4 SECTION 16,  
 T 6 N, R 61 W,  
 6TH PM.  
 WELD COUNTY,  
 COLORADO

**MARATHON OIL COMPANY**  
 PO BOX 3128, HOUSTON TX, 77253  
 5555 SAN FELIPE, HOUSTON TX, 77056

**CONSTRUCTION LAYOUT**

629' FSL	739' FWL
SCALE: 1"=100'	EXHIBIT "I"
DATE: 3/14/2012	SHEET 8 OF 14



HORIZONTAL SCALE: 1"=100' - VERTICAL SCALE: 1"=20'

NOTES:

- Elevation of pad shown on plans are to constructed pad without final gravel padding placement. Depth, volume, and padding material to be determined by operator.
- The information contained in this plat is legally privileged and confidential information intended only for the use of the recipients. If you are not the intended recipients, you are hereby notified that any use, dissemination, distribution or copying of this information is strictly prohibited.



**WILLIAM H. SMITH  
& ASSOCIATES P.C.**  
SURVEYING CONSULTANTS  
550 EAST SECOND NORTH PHONE: 307-875-3638  
GREEN RIVER, WY 307-875-3639  
www.whsmithpc.com

DRAWN BY: IBB

CHECKED BY: RAW

PROJECT NO: 661164H

JOB NO: 2011001

REVISIONS:

**CONSTRUCTION DATA**

CUT SLOPE:	3:1
FILL SLOPE:	3:1
TOTAL CUT:	8,206 CU. YDS.
TOTAL FILL:	4,484 CU. YDS.
TOP SOIL AT 6"	3,384 CU. YDS.
SPOIL:	338 CU. YDS.
DISTURBED AREA	182,745 SQ. FT.
DISTURBED AREA	4.20 ACRES

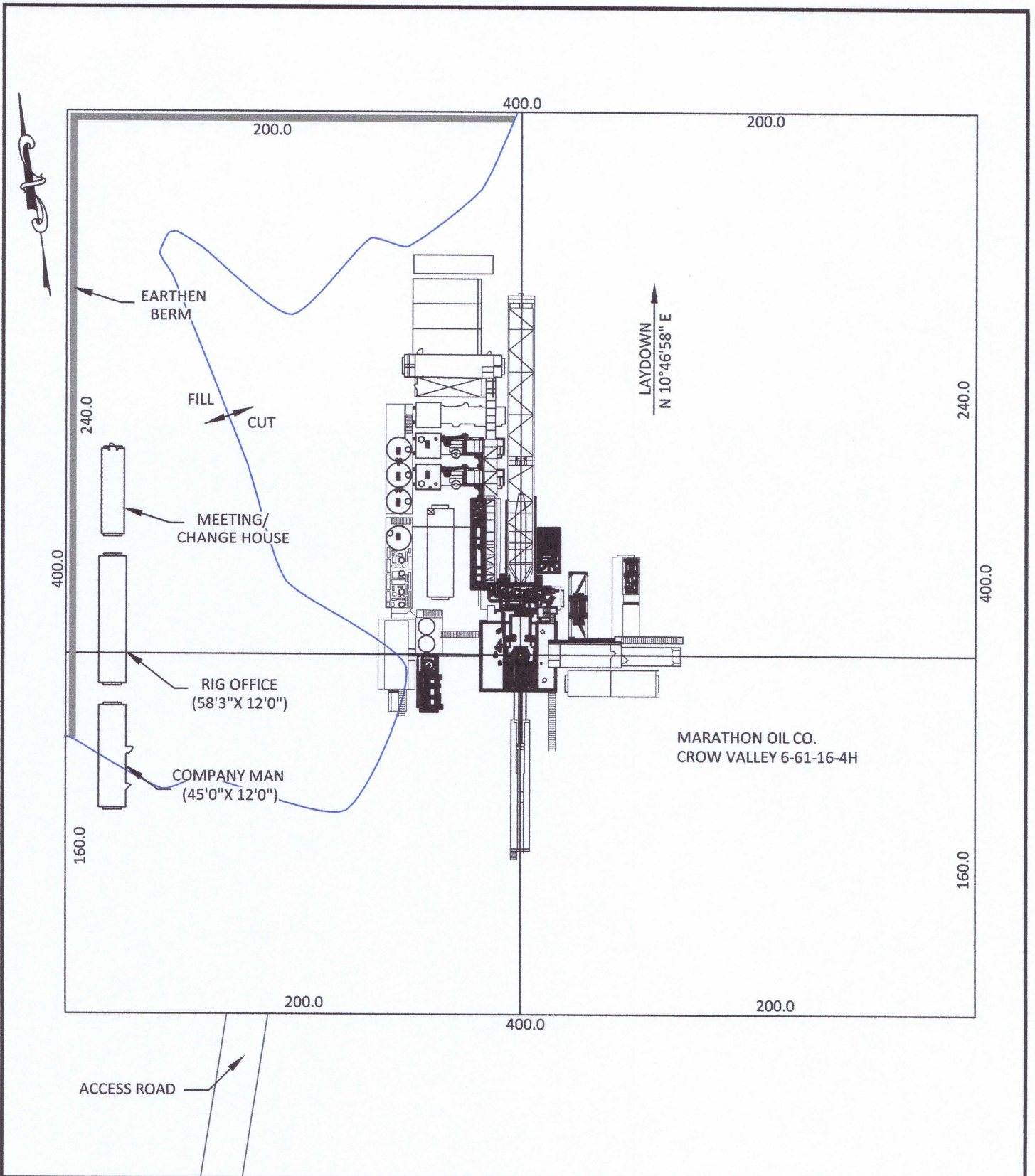
**LOCATION:**

CROW VALLEY  
6-61-16-4H  
WITHIN SW/4  
SW/4 SECTION 16,  
T 6 N, R 61 W,  
6TH PM.  
WELD COUNTY,  
COLORADO

**MARATHON OIL COMPANY**  
PO BOX 3128, HOUSTON TX, 77253  
5555 SAN FELIPE, HOUSTON TX, 77056

**CONSTRUCTION LAYOUT  
CROSS SECTIONS**

SCALE: AS NOTED	EXHIBIT "J"
DATE: 3/14/2012	SHEET 9 OF 14



**WILLIAM H. SMITH & ASSOCIATES P.C.**  
**SURVEYING CONSULTANTS**  
 550 EAST SECOND NORTH    PHONE: 307-875-3638  
 GREEN RIVER, WY    307-875-3639  
 www.whsmithpc.com

DRAWN BY: IBB	CHECKED BY: RAW
PROJECT NO: 661164H	JOB NO: 2011001
REVISIONS:	

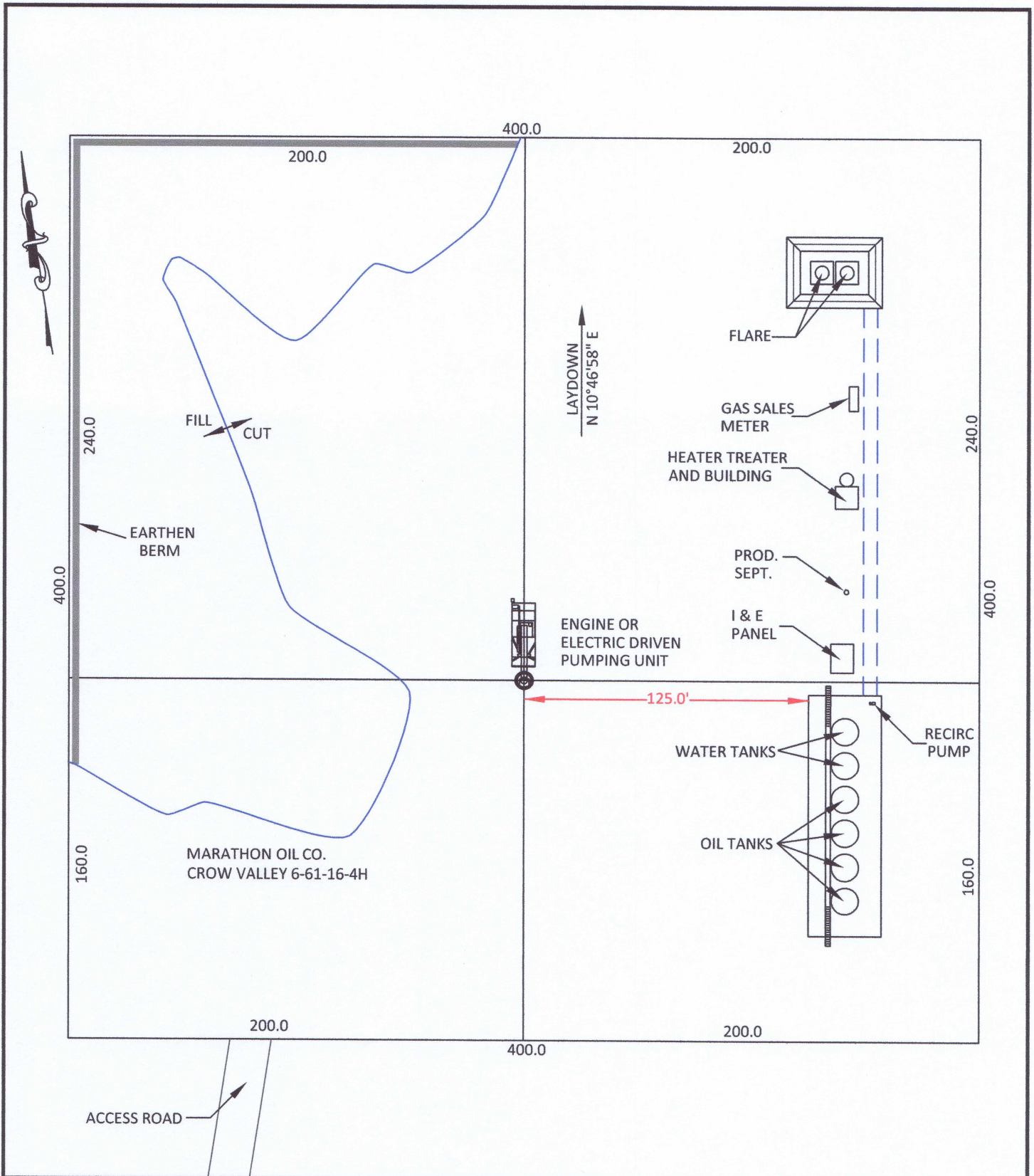
**CONFIDENTIALITY NOTES:**  
 The information contained in this plat is legally privileged and confidential information intended only for the use of the recipients. If you are not the intended recipients, you are hereby notified that any use, dissemination, distribution or copying of this information is strictly prohibited.

**LOCATION:**  
 CROW VALLEY  
 6-61-16-4H  
 WITHIN SW/4  
 SW/4 SECTION 16,  
 T 6 N, R 61 W,  
 6TH PM.  
 WELD COUNTY,  
 COLORADO

**MARATHON OIL COMPANY**  
 PO BOX 3128, HOUSTON TX, 77253  
 5555 SAN FELIPE, HOUSTON TX, 77056

**DRILLING FACILITIES**

SCALE: 1"=60'	EXHIBIT "K"
DATE: 3/14/2012	SHEET 10 OF 14



**WILLIAM H. SMITH & ASSOCIATES P.C.**  
**SURVEYING CONSULTANTS**  
 550 EAST SECOND NORTH PHONE: 307-875-3638  
 GREEN RIVER, WY 307-875-3639  
 www.whsmithpc.com

DRAWN BY: IBB	CHECKED BY: RAW
PROJECT NO: 661164H	JOB NO: 2011001
REVISIONS:	

**CONFIDENTIALITY NOTES:**  
 The information contained in this plat is legally privileged and confidential information intended only for the use of the recipients. If you are not the intended recipients, you are hereby notified that any use, dissemination, distribution or copying of this information is strictly prohibited.

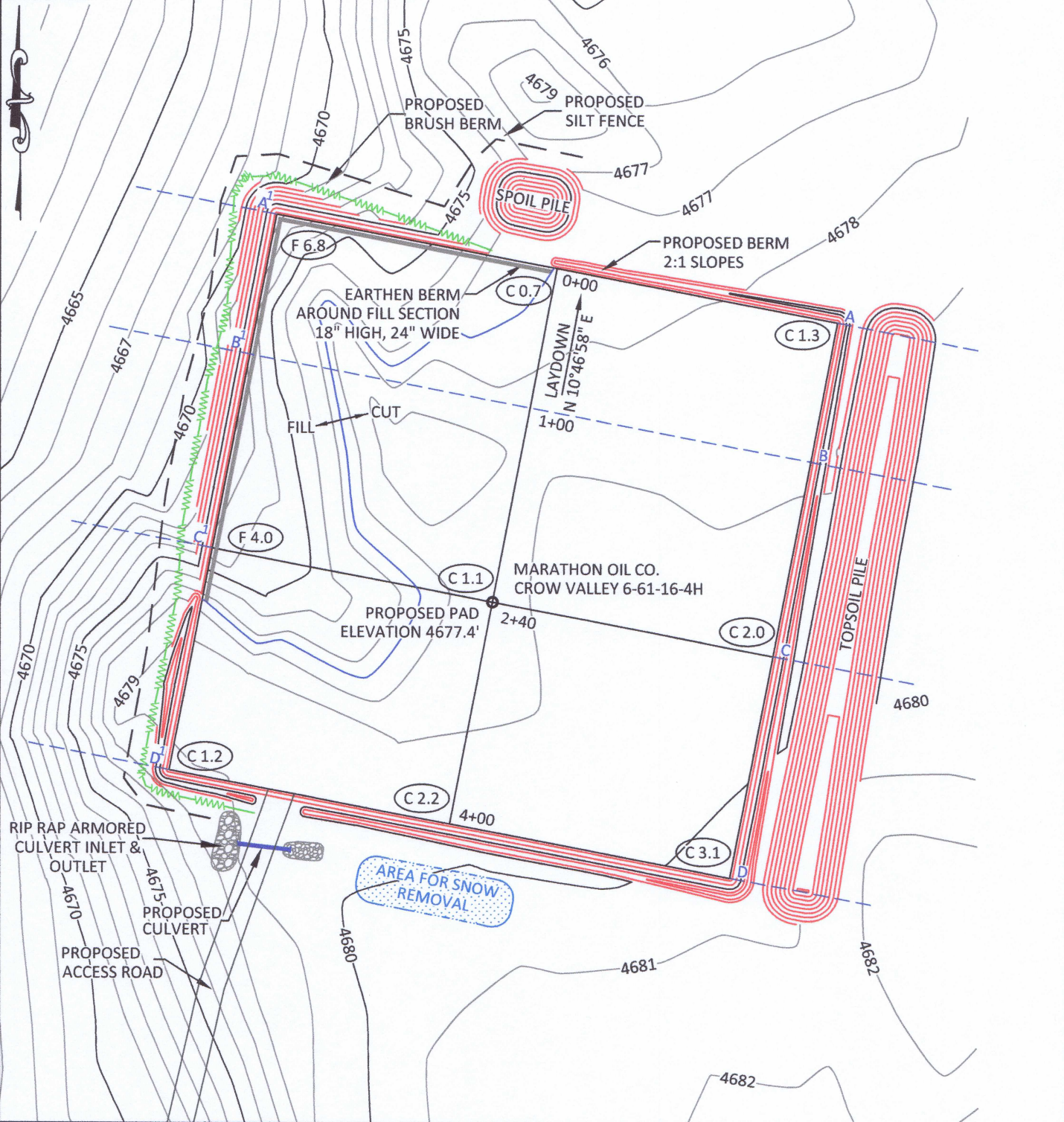
**LOCATION:**  
 CROW VALLEY  
 6-61-16-4H  
 WITHIN SW/4  
 SW/4 SECTION 16,  
 T 6 N, R 61 W,  
 6TH PM.  
 WELD COUNTY,  
 COLORADO

**MARATHON OIL COMPANY**  
 PO BOX 3128, HOUSTON TX, 77253  
 5555 SAN FELIPE, HOUSTON TX, 77056

**PRODUCTION FACILITIES**

SCALE: 1"=60'	EXHIBIT "L"
DATE: 3/14/2012	SHEET 11 OF 14

SCALE: 1" = 100'  
 CONTOUR  
 INTERVAL 1'



**CONFIDENTIALITY NOTES:**  
 The information contained in this plat is legally privileged and confidential information intended only for the use of the recipients. If you are not the intended recipients, you are hereby notified that any use, dissemination, distribution or copying of this information is strictly prohibited.

**WILLIAM H. SMITH & ASSOCIATES P.C.**  
 SURVEYING CONSULTANTS  
 550 EAST SECOND NORTH    PHONE: 307-875-3638  
 GREEN RIVER, WY            307-875-3639  
 www.whsmithpc.com

DRAWN BY: IBB                      CHECKED BY: RAW  
 PROJECT NO: 661164H              JOB NO: 2011001  
 REVISIONS:

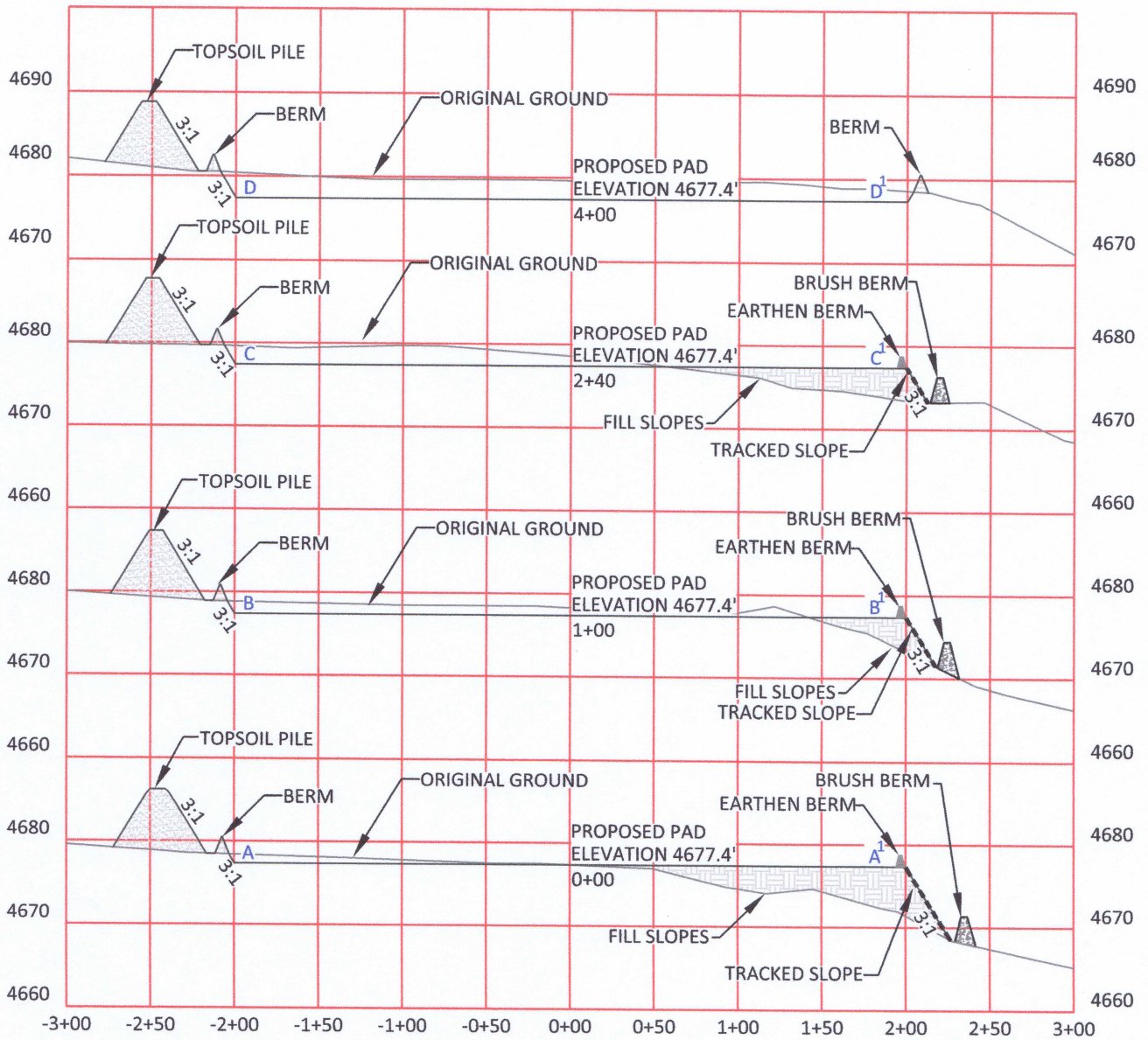
LEGEND	
SILT FENCE	— — — — —
BRUSH BERM	— — — — —

**LOCATION:**  
 CROW VALLEY  
 6-61-16-4H  
 WITHIN SW/4  
 SW/4 SECTION 16,  
 T 6 N, R 61 W,  
 6TH PM.  
 WELD COUNTY,  
 COLORADO

**MARATHON OIL COMPANY**  
 PO BOX 3128, HOUSTON TX, 77253  
 5555 SAN FELIPE, HOUSTON TX, 77056

**STORM WATER PREVENTION PLAN**

SCALE: 1" = 100'	EXHIBIT "M"
DATE: 3/14/2012	SHEET 12 of 14



HORIZONTAL SCALE: 1"=100'  
 VERTICAL SCALE: 1"=20'



**WILLIAM H. SMITH  
 & ASSOCIATES P.C.**  
 SURVEYING CONSULTANTS  
 550 EAST SECOND NORTH    PHONE: 307-875-3638  
 GREEN RIVER, WY    307-875-3639  
 www.whsmithpc.com

DRAWN BY: IBB    CHECKED BY: RAW  
 PROJECT NO: 661164H    JOB NO: 2011001  
 REVISIONS:

**CONFIDENTIALITY NOTES:**  
 The information contained in this plat is legally privileged and confidential information intended only for the use of the recipients. If you are not the intended recipients, you are hereby notified that any use, dissemination, distribution or copying of this information is strictly prohibited.

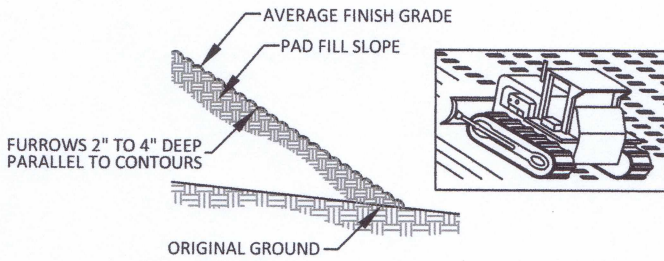
**LOCATION:**  
 CROW VALLEY  
 6-61-16-4H  
 WITHIN SW/4  
 SW/4 SECTION 16,  
 T 6 N, R 61 W,  
 6TH PM.  
 WELD COUNTY,  
 COLORADO

**MARATHON OIL COMPANY**  
 PO BOX 3128, HOUSTON TX, 77253  
 5555 SAN FELIPE, HOUSTON TX, 77056

**STORM WATER PREVENTION  
 CROSS SECTIONS**

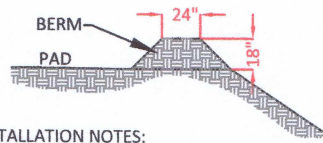
SCALE: AS NOTED    EXHIBIT "N"  
 DATE: 3/14/2012    SHEET 13 of 14

**A. FILL SLOPE TRACKING DETAILS**



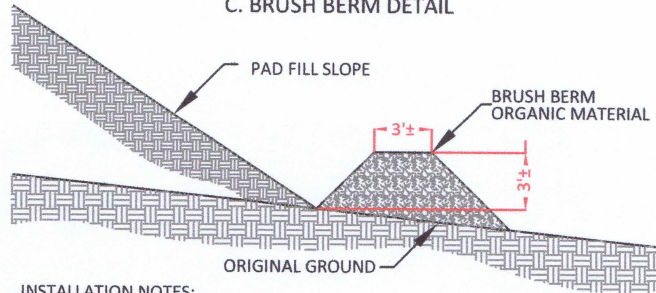
- INSTALLATION NOTES:**
1. DISTURBED SURFACES SHALL BE ROUGHENED USING RIPPING OR TILLING EQUIPMENT ON THE CONTOURS OR TRACKING UP AND DOWN THE SLOPE USING EQUIPMENT TREADS

**B. EARTHEN BERM DETAIL**



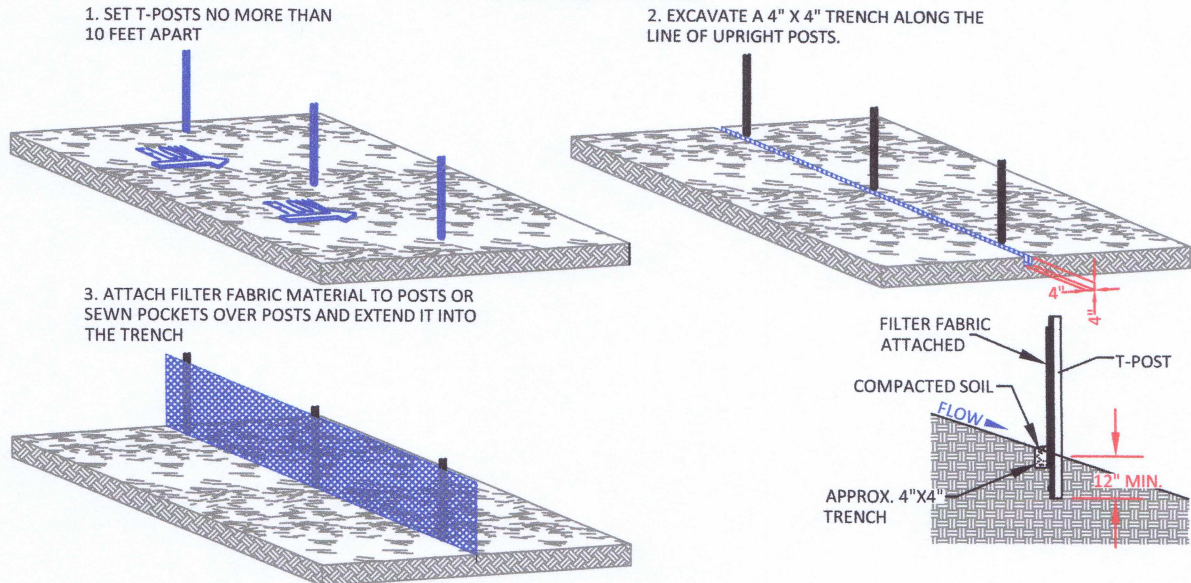
- INSTALLATION NOTES:**
1. BERM SHALL BE CONSTRUCTED OF WELL COMPACTED GRANULAR MATERIAL.
  2. BERM SHALL BE CONSTRUCTED ON THE PERIMETER OF THE PAD IN ALL AREAS THAT COULD RECEIVE STORMWATER RUNOFF.
  3. DIMENSIONS ARE APPROXIMATE. FIELD CONDITIONS WILL DETERMINE ACTUAL DIMENSIONS OF STRUCTURE.

**C. BRUSH BERM DETAIL**




- INSTALLATION NOTES:**
1. BERM TO BE CONSTRUCTED AFTER SITE HAS BEEN GRUBBED PRIOR TO PAD CONSTRUCTION.
  2. ONSITE ORGANIC MATERIAL TO BE PUSHED INTO BERM ON EDGE PERIMETER OF FILL SLOPE IN A MANNER NOT TO CREATE ADDITIONAL DISTURBANCE BEYOND THE CATCH LINE.
  3. BERM TO BE COMPACTED WITH FRONT END LOADER BUCKET OR SIMILAR METHOD TO ACHIEVE ADEQUATE COMPACTION.

**D. SILT FENCE DETAILS**



**CONFIDENTIALITY NOTES:**  
The information contained in this plat is legally privileged and confidential information intended only for the use of the recipients. If you are not the intended recipients, you are hereby notified that any use, dissemination, distribution or copying of this information is strictly prohibited.

 <p><b>WILLIAM H. SMITH &amp; ASSOCIATES P.C.</b> SURVEYING CONSULTANTS 550 EAST SECOND NORTH    PHONE: 307-875-3638 GREEN RIVER, WY    307-875-3639 www.whsmithpc.com</p>	<b>USED ON THIS SITE</b>		<p><b>LOCATION:</b> CROW VALLEY 6-61-16-4H WITHIN SW/4 SW/4 SECTION 16, T 6 N, R 61 W, 6TH PM. WELD COUNTY, COLORADO</p>	<p><b>MARATHON OIL COMPANY</b> PO BOX 3128, HOUSTON TX, 77253 5555 SAN FELIPE, HOUSTON TX, 77056</p>
	<p>A: EARTHEN BERM AT TOP OF SLOPE AROUND FILL SECTIONS</p> <p>B: BRUSH BERM AT TOE OF SLOPE AROUND FILL SECTIONS</p> <p>C: SILT FENCE</p> <p>D: FILL SLOPE TRACKING</p>			
<p>DRAWN BY: IBB    CHECKED BY: RAW PROJECT NO: 661164H    JOB NO: 2011001 REVISIONS:</p>	<p><b>STORM WATER PREVENTION DETAILS</b></p>			
			<p>SCALE: NOT TO SCALE    EXHIBIT "O" DATE: 3/14/2012    SHEET 14 of 14</p>	