

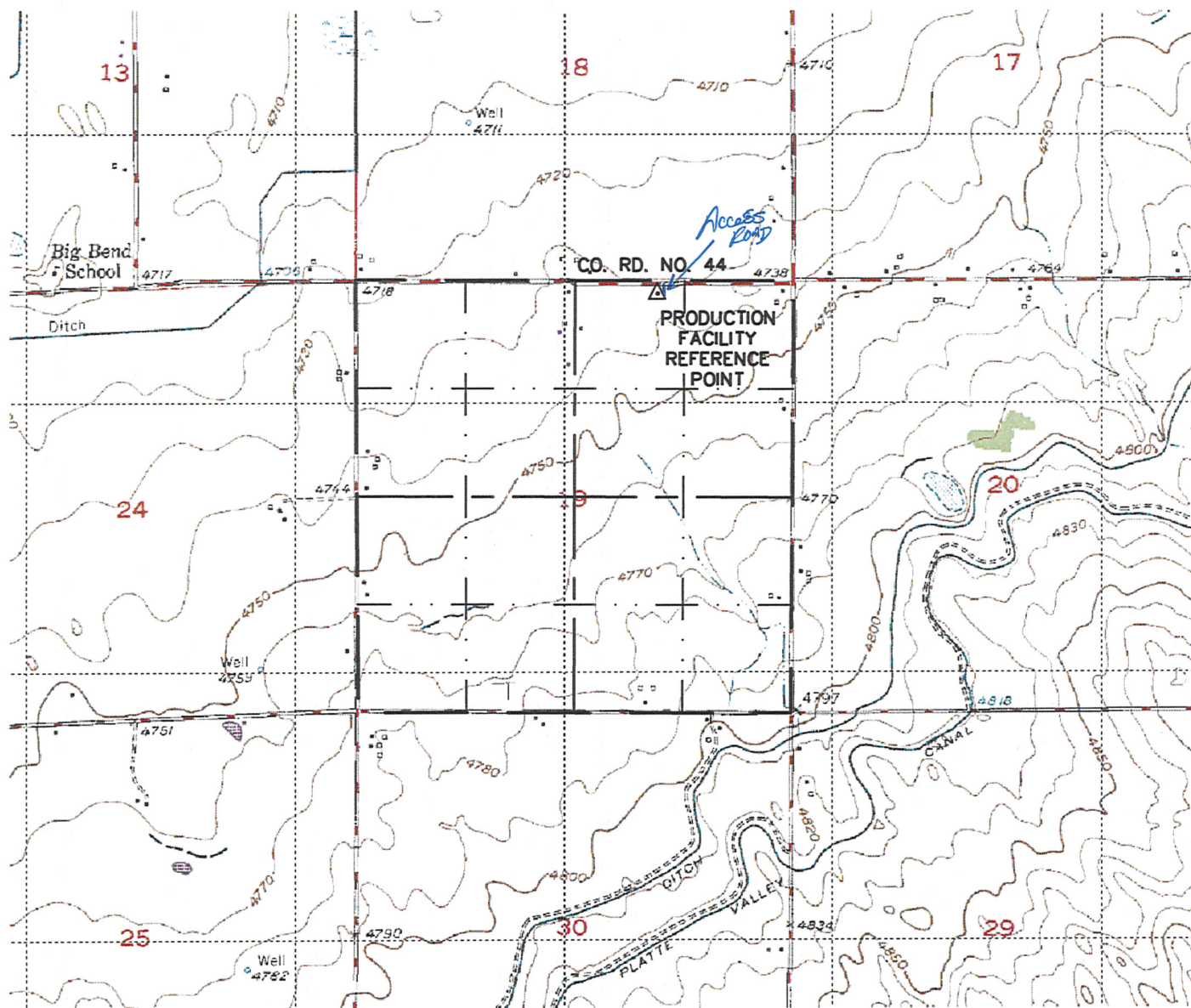
Steil Surveying Services, LLC

1102 West 19th Street P.O. BOX 2073

Cheyenne, Wyoming 82001

PRODUCTION FACILITY  
ACCESS ROAD MAP  
FOR THE PROPOSED MCMILLEN G20-30D AND  
MCMILLEN G19-27D WELLS

SECTION 19  
TOWNSHIP 4 NORTH  
RANGE 65 WEST



0 2000

Scale: 1" = 2000'