

Well Name: McMillen G19-27D

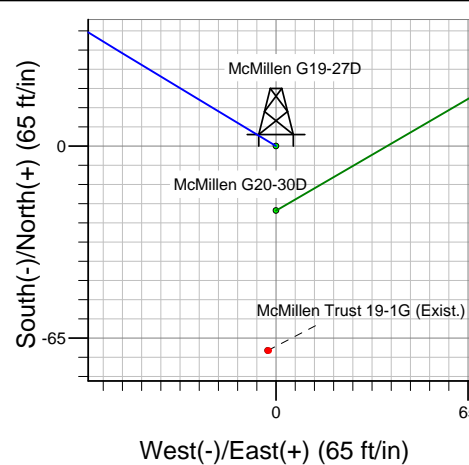
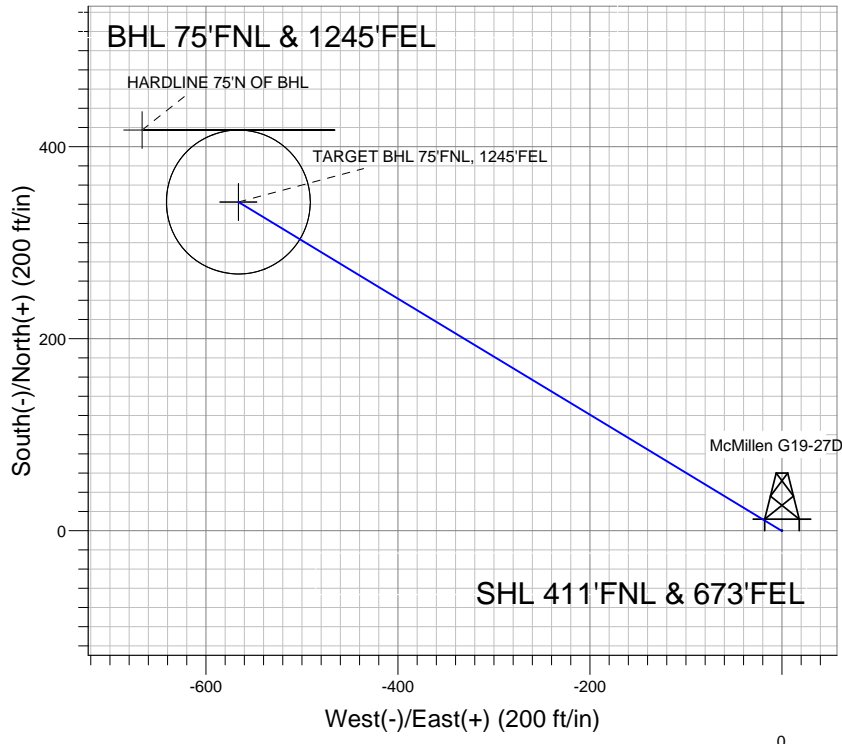
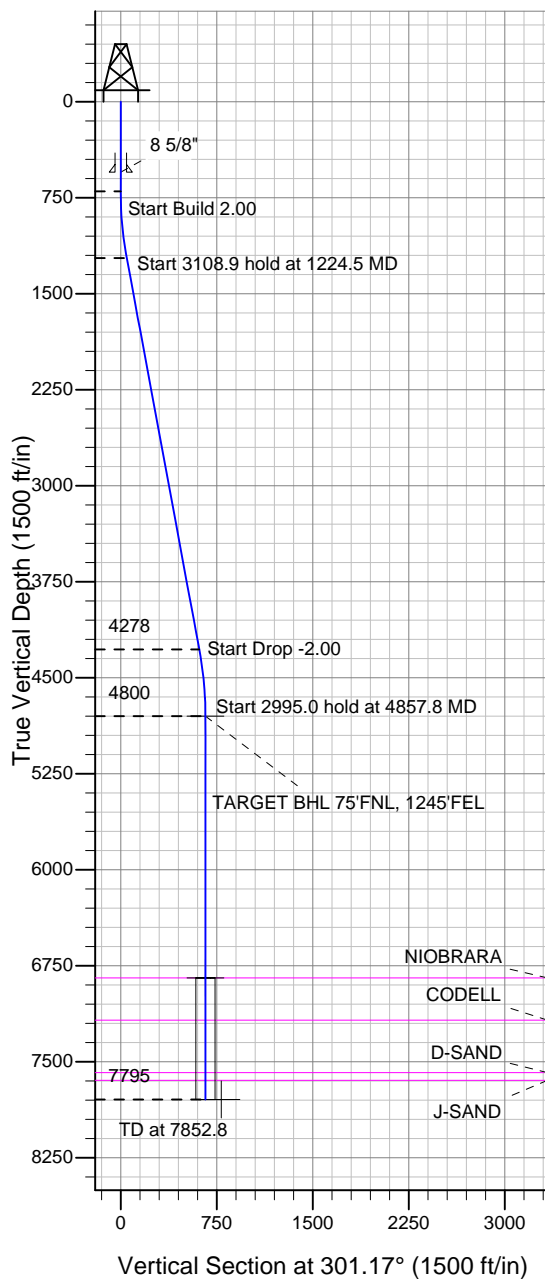
Surface Location: McMillen G19-27D Pad Sec.19-T4N-R65W
North American Datum 1983 , US State Plane 1983 , Colorado Northern Zone

Ground Elevation: 4737.0

+N/-S	+E/-W	Northing	Easting	Latitude	Longitude	Slot
0.0	0.0	1354608.83	3223474.86	40.304030	-104.698730	

Original Well Elev WELL @ 4750.0ft (Original Well Elev)

NOBLE ENERGY INC WELD COUNTY CO



McMillen G19-27D Pad Sec.19-T4N-R65W
McMillen G19-27D
Noble McMillen G19-27D Plan #2 (2-20-12)
12:21, February 21 2012



Azimuths to True North
Magnetic North: 8.75°
Magnetic Field
Strength: 53036.0snT
Dip Angle: 66.97°
Date: 12/15/2011
Model: IGRF2010

WELLBORE TARGET DETAILS (LAT/LONG)

Name	TVD	+N/-S	+E/-W	Latitude	Longitude	Shape
TARGET BHL 75'FNL, 1245'FEL	4800.0	342.5	-566.2	40.304970	-104.700760	Point
TARGET CIRCLE 75'FNL, 1245'FEL	6845.0	342.5	-566.2	40.304970	-104.700760	Circle (Radius: 75.0)
HARDLINE 75'N OF BHL	7795.0	417.5	-666.2	40.305176	-104.701119	Polygon

SECTION DETAILS

Sec	MD	Inc	Azi	TVD	+N/-S	+E/-W	DLeg	TFace	VSec	Target
1	0.0	0.00	0.00	0.0	0.0	0.0	0.00	0.00	0.0	
2	700.0	0.00	0.00	700.0	0.0	0.0	0.00	0.00	0.0	
3	1224.5	10.49	301.17	1221.5	24.8	-41.0	2.00	301.17	47.9	
4	4333.3	10.49	301.17	4278.5	317.7	-525.2	0.00	0.00	613.8	
5	4857.8	0.00	0.00	4800.0	342.5	-566.2	2.00	180.00	661.7	TARGET BHL 75'FNL, 1245'FEL
6	7852.8	0.00	0.00	7795.0	342.5	-566.2	0.00	0.00	661.7	