

Steil Surveying Services, LLC

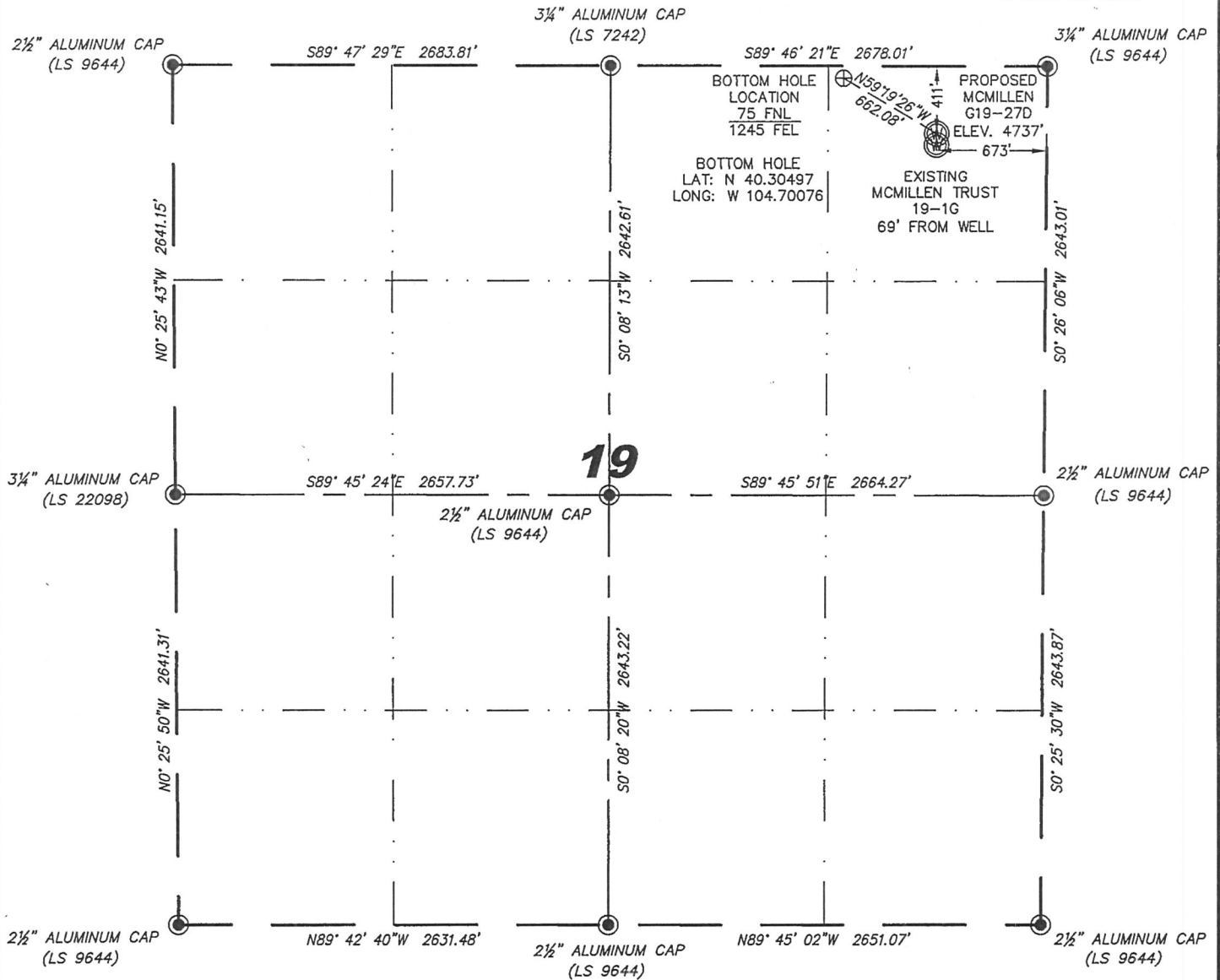
1102 West 19th Street P.O. BOX 2073

Cheyenne, Wyoming 82001

WELL LOCATION CERTIFICATE

THIS MAP DOES NOT REPRESENT A BOUNDARY SURVEY

SECTION 19
TOWNSHIP 4 NORTH
RANGE 65 WEST



Scale: 1" = 1000'

IN ACCORDANCE WITH A REQUEST FROM SCOTT LEWIS - NOBLE ENERGY INC, STEIL SURVEYING SERVICES, LLC HAS DETERMINED THE SURFACE HOLE LOCATION OF THE MCMILLEN G19-27D WELL TO BE 411' FNL, 673' FEL, AS MEASURED AT NINETY (90) DEGREES FROM THE SECTION LINES, SECTION 19, TOWNSHIP 4 NORTH, RANGE 65 WEST, 6TH PRINCIPLE MERIDIAN, WELD COUNTY, COLORADO.

I HEREBY CERTIFY THAT THIS WELL LOCATION CERTIFICATE WAS PREPARED BY ME, OR UNDER MY DIRECT SUPERVISION, THAT THE FIELD WORK WAS COMPLETED ON 09/29/2011, FOR AND ON BEHALF OF NOBLE ENERGY INC, THAT IT IS NOT A LAND SURVEY PLAT OR AN IMPROVEMENT SURVEY PLAT, AND THAT IT IS NOT TO BE RELIED UPON FOR ESTABLISHMENT OF FENCE, BUILDING, OR OTHER FUTURE IMPROVEMENT LINES.

NOTES:

- 1) BASIS OF BEARINGS FOR THIS MAP ARE BASED UPON GPS OBSERVATIONS MADE ON 03/01/2009 BETWEEN MONUMENTS LOCATED AT THE SOUTHEAST SECTION CORNER AND THE NORTHEAST SECTION CORNER OF SAID SECTION AND WITH ALL BEARINGS SHOWN HEREON RELATIVE THERETO.
- 2) COORDINATES SHOWN ARE COLORADO STATE PLANE (NORTH ZONE) NAD 83
- 3) ELEVATIONS ARE BASED UPON NGS OPUS SOLUTION NAVD 88 DATUM.
- 4) THE NEAREST EXISTING WELL IN THIS QUARTER: MCMILLEN TRUST 19-1G, 69' SOUTH.
- 5) SEE LOCATION DRAWING FOR ALL IMPROVEMENTS WITHIN VISIBLE IMPROVEMENT LIMIT.
- 6) THE LOCATION FALLS IN IRRIGATED CROP LAND.

LATITUDE & LONGITUDE (NAD 83 SURFACE HOLE)
LATITUDE: N 40.30403
LONGITUDE: W 104.69873
PDOP: 2.1
QUARTER-QUARTER: NE/4NE/4 SEC 19
NEAREST PROPERTY LINE: 411' NORTH

LEGEND

- FOUND SURVEY MONUMENT PER MONUMENT RECORD - EXCEPTIONS NOTED.
- (C) CALCULATED DIMENSION

David C. Holmes
Professional Land Surveyor Registration No. 32828
State of Colorado

JOB #: 11086

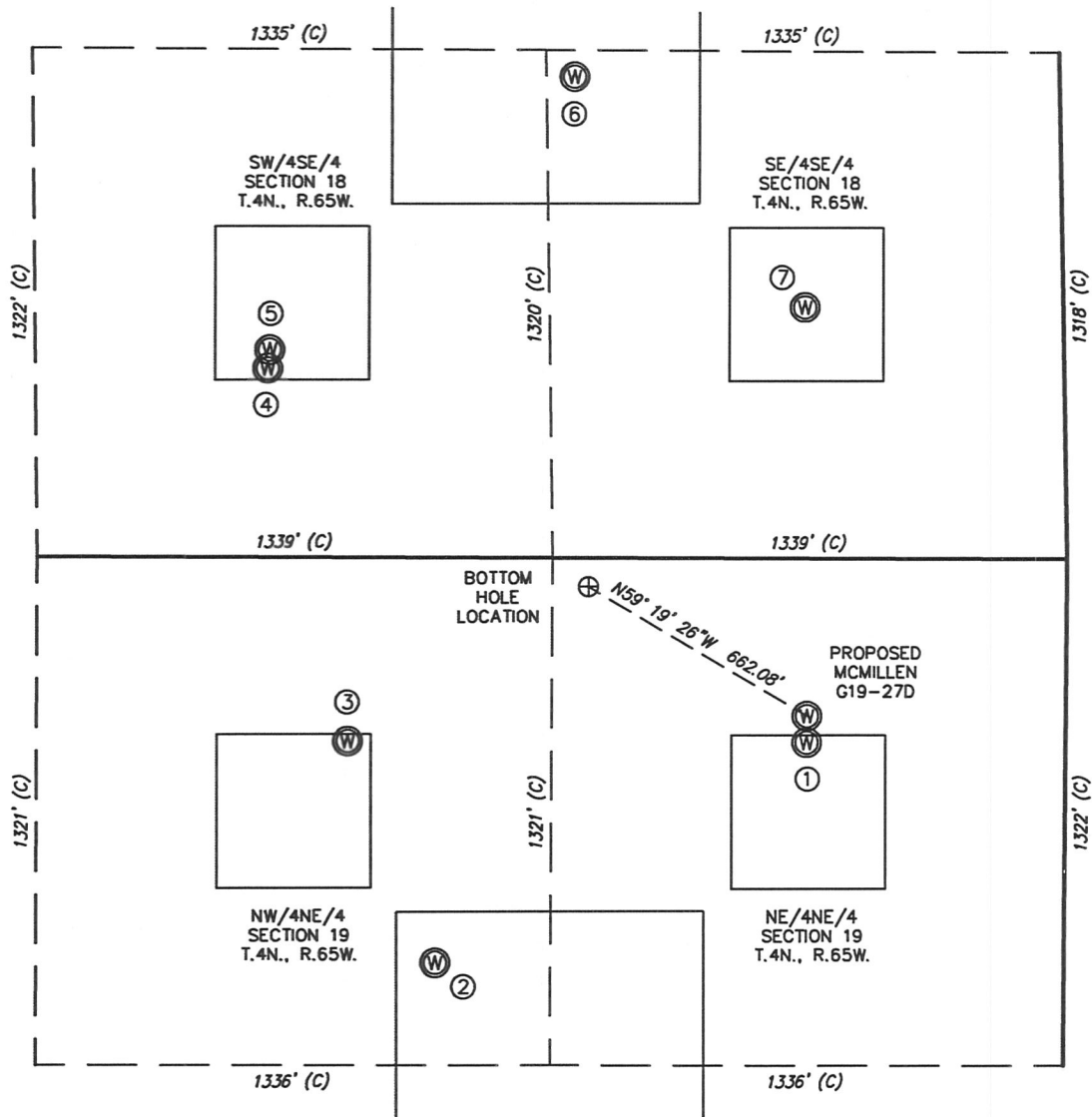
Completed 10/06/2011



NOTICE: According to Colorado law you MUST commence any legal action based upon any defect in this W.L.C. within three years after you first discover such defect. In no event may any action based upon any defect in this W.L.C. be commenced more than ten years from this sold date of the certification shown hereon.

SKETCH - MCMILLEN G19-27D

SECTIONS 18 & 19
TOWNSHIP 4 NORTH
RANGE 65 WEST



①

MCMILLEN
TRUST 19-1G
NE/NE SEC. 19
480' FNL
673' FEL
EL 4738'
N 40.30384
W 104.69874
PDOP 2.3

②

C.J. SCHMIDT
UNIT NO. 2
NW/NE SEC. 19
1055' FNL
1636' FEL
EL 4743'
N 40.30230
W 104.70222
PDOP 2.3

③

MCMILLEN
TRUST 19-2G
NW/NE SEC. 19
478' FNL
1868' FEL
EL 4735'
N 40.30389
W 104.70302
PDOP 2.3

④

KINSMAN
36-18
SW/SE SEC. 18
490' FSL
2071' FEL
EL 4724'
N 40.30655
W 104.70374
PDOP 2.0

⑤

KINSMAN
34-18
SW/SE SEC. 18
539' FSL
2065' FEL
EL 4724'
N 40.30669
W 104.70372
PDOP 2.1

⑥

ROOT 20-18
SE/SE SEC. 18
1251' FSL
1261' FEL
EL 4719'
N 40.30861
W 104.70085
PDOP 2.4

⑦

ROOT TRUST
18-16G
SE/SE SEC. 18
653' FSL
671' FEL
EL 4726'
N 40.30695
W 104.69872
PDOP 2.2

NOTES:

- 1) THIS SKETCH DOES NOT REPRESENT A BOUNDARY SURVEY.
- 2) THE DATUM FOR THE LATITUDES AND LONGITUDES ON THIS SKETCH IS NAD83.



0 500

Scale: 1" = 500'