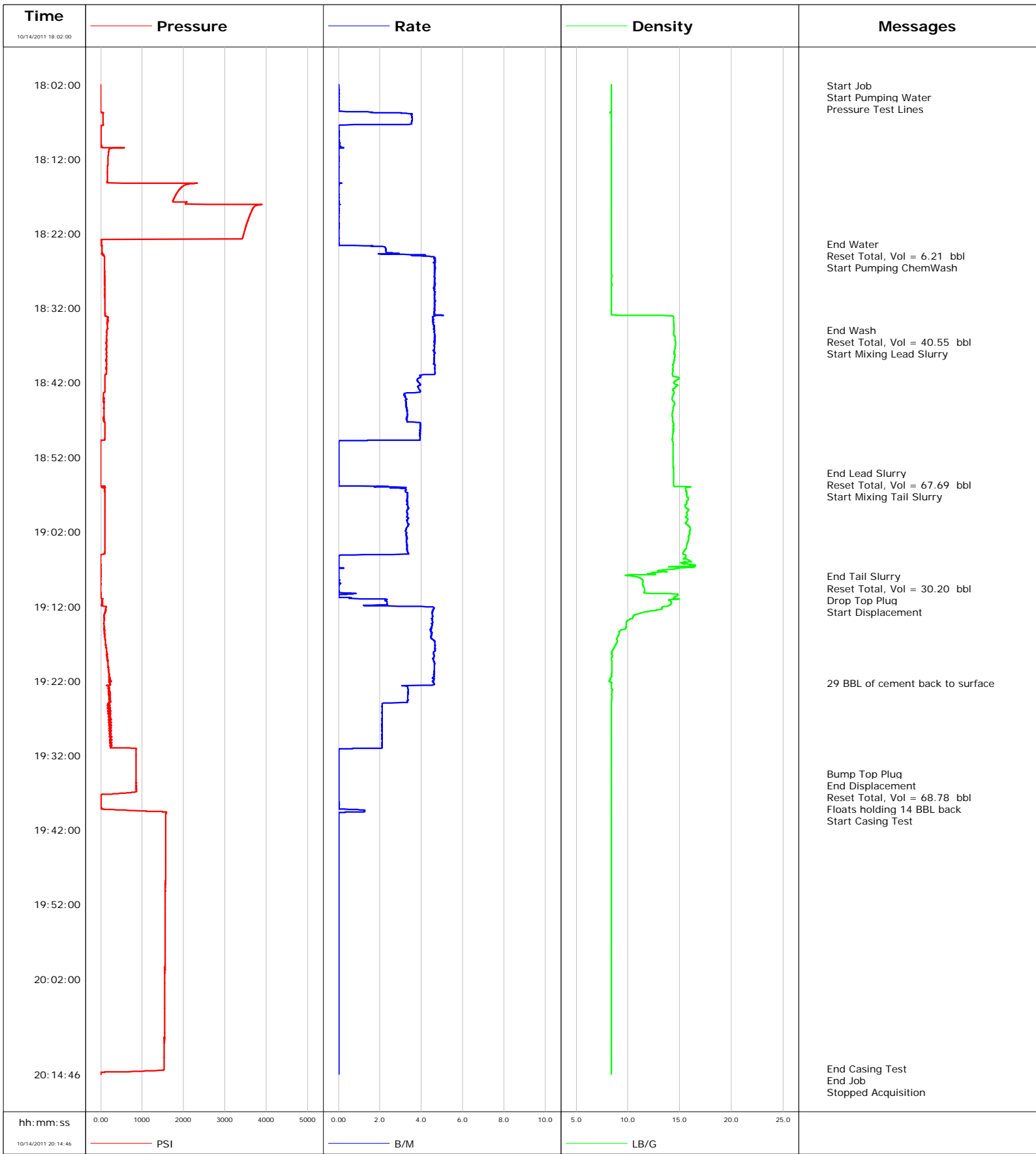


Well	Durham 1-31	Client	Shell Oil
Field	WFU/Swan	SIR No.	BC74-00116
Engineer	Tony Fowler	Job Type	10 3/4" Surface
Country	United States	Job Date	10-14-2011



Well		Field		Job Start		Customer		Job Number	
Durham 1-31		WFU/Swan		Oct/14/2011		Shell Oil		BC74-00116	
Date	Time 24-hr clock	Treating Pressure PSI	Flow Rate B/M	Density LB/G	Volume BBL	Message			
10/14/2011	18:16:40	1829	0.0	8.42	6.1				
10/14/2011	18:17:40	1736	0.0	8.42	6.1				
10/14/2011	18:18:40	3672	0.0	8.42	6.1				
10/14/2011	18:19:40	3592	0.0	8.42	6.1				
10/14/2011	18:20:40	3525	0.0	8.42	6.2				
10/14/2011	18:21:40	3471	0.0	8.42	6.2				
10/14/2011	18:22:40	3422	0.0	8.42	6.2				
10/14/2011	18:23:24					End Water			
10/14/2011	18:23:24	13	0.0	8.42	6.2				
10/14/2011	18:23:26					Reset Total, Vol = 6.21 bbl			
10/14/2011	18:23:26	12	0.0	8.42	6.2				
10/14/2011	18:23:34					Start Pumping ChemWash			
10/14/2011	18:23:34	14	0.0	8.42	0.0				
10/14/2011	18:23:40	21	1.7	8.42	0.1				
10/14/2011	18:24:40	43	2.9	8.42	2.3				
10/14/2011	18:25:40	84	4.7	8.42	6.5				
10/14/2011	18:26:40	89	4.6	8.42	11.1				
10/14/2011	18:27:40	90	4.6	8.43	15.8				
10/14/2011	18:28:40	92	4.6	8.42	20.4				
10/14/2011	18:29:40	99	4.6	8.42	25.0				
10/14/2011	18:30:40	99	4.6	8.42	29.7				
10/14/2011	18:31:40	105	4.7	8.42	34.3				
10/14/2011	18:32:40	102	4.6	8.42	39.0				
10/14/2011	18:33:40	163	4.6	14.41	43.6				
10/14/2011	18:34:40	162	4.6	14.44	48.2				
10/14/2011	18:34:56					End Wash			
10/14/2011	18:34:56	150	4.6	14.44	49.4				
10/14/2011	18:34:58					Reset Total, Vol = 40.55 bbl			
10/14/2011	18:34:58	147	4.6	14.44	49.6				
10/14/2011	18:35:01					Start Mixing Lead Slurry			
10/14/2011	18:35:01	145	4.6	14.44	0.2				
10/14/2011	18:35:40	143	4.6	14.46	3.2				
10/14/2011	18:36:40	136	4.7	14.59	7.9				
10/14/2011	18:37:40	135	4.6	14.49	12.5				
10/14/2011	18:38:40	141	4.6	14.50	17.1				
10/14/2011	18:39:40	140	4.7	14.33	21.8				
10/14/2011	18:40:40	138	4.7	14.32	26.4				
10/14/2011	18:41:40	102	3.8	14.70	30.5				
10/14/2011	18:42:40	100	3.9	14.55	34.4				
10/14/2011	18:43:40	69	3.2	14.35	38.1				
10/14/2011	18:44:40	71	3.3	14.50	41.3				
10/14/2011	18:45:40	74	3.3	14.35	44.6				
10/14/2011	18:46:40	72	3.3	14.33	47.9				
10/14/2011	18:47:40	99	4.0	14.40	51.5				
10/14/2011	18:48:40	98	3.9	14.37	55.4				
10/14/2011	18:49:40	98	3.9	14.26	59.4				
10/14/2011	18:50:40	-3	0.0	14.34	59.7				
10/14/2011	18:51:40	-2	0.0	14.36	59.7				
10/14/2011	18:52:40	-2	0.0	14.37	59.7				
10/14/2011	18:53:40	-2	0.0	14.38	59.7				
10/14/2011	18:54:06					End Lead Slurry			
10/14/2011	18:54:06	-2	0.0	14.39	59.7				
10/14/2011	18:54:07					Reset Total, Vol = 67.69 bbl			
10/14/2011	18:54:07	-2	0.0	14.39	59.7				

Well		Field		Job Start		Customer		Job Number	
Durham 1-31		WFU/Swan		Oct/14/2011		Shell Oil		BC74-00116	
Date	Time 24-hr clock	Treating Pressure PSI	Flow Rate B/M	Density LB/G	Volume BBL	Message			
10/14/2011	18:54:09	-3	0.0	14.39	0.0				
10/14/2011	18:54:40	-2	0.0	14.39	0.0				
10/14/2011	18:55:40	-3	0.0	14.40	0.0				
10/14/2011	18:56:40	94	3.2	15.64	2.3				
10/14/2011	18:57:40	102	3.3	15.82	5.6				
10/14/2011	18:58:40	101	3.4	15.53	8.9				
10/14/2011	18:59:40	102	3.3	15.69	12.3				
10/14/2011	19:00:40	100	3.3	15.66	15.6				
10/14/2011	19:01:40	105	3.3	16.04	18.9				
10/14/2011	19:02:40	101	3.3	15.84	22.2				
10/14/2011	19:03:40	100	3.3	15.71	25.5				
10/14/2011	19:04:40	96	3.3	15.39	28.8				
10/14/2011	19:05:40	-1	0.0	15.36	30.2				
10/14/2011	19:06:40	-0	0.0	14.75	30.2				
10/14/2011	19:07:40	-0	0.0	11.89	30.2				
10/14/2011	19:07:59					End Tail Slurry			
10/14/2011	19:07:59	1	0.0	10.48	30.2				
10/14/2011	19:08:01					Reset Total, Vol = 30.20 bbl			
10/14/2011	19:08:01	1	0.0	10.60	30.2				
10/14/2011	19:08:11					Drop Top Plug			
10/14/2011	19:08:11	-1	0.0	11.10	0.0				
10/14/2011	19:08:14					Start Displacement			
10/14/2011	19:08:14	-1	0.0	11.16	0.0				
10/14/2011	19:08:40	-0	0.0	11.47	0.0				
10/14/2011	19:09:40	-0	0.0	11.59	0.0				
10/14/2011	19:10:40	3	0.0	14.62	0.2				
10/14/2011	19:11:40	35	2.3	14.18	1.8				
10/14/2011	19:12:40	114	4.6	12.14	5.4				
10/14/2011	19:13:40	89	4.5	10.43	10.0				
10/14/2011	19:14:40	82	4.5	9.83	14.5				
10/14/2011	19:15:40	97	4.5	9.14	19.0				
10/14/2011	19:16:40	116	4.6	8.98	23.5				
10/14/2011	19:17:40	137	4.7	8.62	28.1				
10/14/2011	19:18:40	148	4.6	8.49	32.8				
10/14/2011	19:19:40	170	4.6	8.46	37.4				
10/14/2011	19:20:40	192	4.6	8.44	42.0				
10/14/2011	19:21:40	197	4.6	8.34	46.6				
10/14/2011	19:22:15					29 BBL of cement back to surface			
10/14/2011	19:22:15	228	4.6	8.41	49.3				
10/14/2011	19:22:40	208	3.1	8.42	51.1				
10/14/2011	19:23:40	185	3.3	8.44	54.5				
10/14/2011	19:24:40	227	3.3	8.42	57.8				
10/14/2011	19:25:40	205	2.1	8.42	60.3				
10/14/2011	19:26:40	215	2.1	8.42	62.4				
10/14/2011	19:27:40	191	2.1	8.41	64.5				
10/14/2011	19:28:40	207	2.1	8.42	66.6				
10/14/2011	19:29:40	241	2.1	8.42	68.7				
10/14/2011	19:30:40	233	2.1	8.42	70.8				
10/14/2011	19:31:40	852	0.0	8.42	71.7				
10/14/2011	19:32:40	853	0.0	8.42	71.8				
10/14/2011	19:33:40	855	0.0	8.42	71.8				
10/14/2011	19:34:28					Bump Top Plug			
10/14/2011	19:34:28	855	0.0	8.42	71.8				
10/14/2011	19:34:29					End Displacement			

Well		Field		Job Start	Customer	Job Number
Durham 1-31		WFU/Swan		Oct/14/2011	Shell Oil	BC74-00116
Date	Time 24-hr clock	Treating Pressure PSI	Flow Rate B/M	Density LB/G	Volume BBL	Message
10/14/2011	19:34:30					Reset Total, Vol = 68.78 bbl
10/14/2011	19:34:30	855	0.0	8.42	71.8	
10/14/2011	19:34:40	855	0.0	8.42	0.0	
10/14/2011	19:35:40	856	0.0	8.42	0.0	
10/14/2011	19:36:40	857	0.0	8.42	0.0	
10/14/2011	19:37:19					Floats holding 14 BBL back
10/14/2011	19:37:19	2	0.0	8.42	0.0	
10/14/2011	19:37:40	4	0.0	8.42	0.0	
10/14/2011	19:38:40	9	0.0	8.42	0.1	
10/14/2011	19:39:40	1568	0.1	8.42	0.5	
10/14/2011	19:40:01					Start Casing Test
10/14/2011	19:40:01	1570	0.0	8.42	0.5	
10/14/2011	19:40:40	1567	0.0	8.42	0.5	
10/14/2011	19:41:40	1566	0.0	8.42	0.5	
10/14/2011	19:42:40	1565	0.0	8.42	0.6	
10/14/2011	19:43:40	1564	0.0	8.42	0.6	
10/14/2011	19:44:40	1563	0.0	8.42	0.6	
10/14/2011	19:45:40	1563	0.0	8.42	0.6	
10/14/2011	19:46:40	1562	0.0	8.42	0.6	
10/14/2011	19:47:40	1561	0.0	8.42	0.6	
10/14/2011	19:48:40	1560	0.0	8.42	0.6	
10/14/2011	19:49:40	1559	0.0	8.42	0.7	
10/14/2011	19:50:40	1558	0.0	8.42	0.7	
10/14/2011	19:51:40	1557	0.0	8.42	0.7	
10/14/2011	19:52:40	1557	0.0	8.42	0.7	
10/14/2011	19:53:40	1555	0.0	8.42	0.7	
10/14/2011	19:54:40	1554	0.0	8.42	0.7	
10/14/2011	19:55:40	1553	0.0	8.42	0.7	
10/14/2011	19:56:40	1553	0.0	8.42	0.7	
10/14/2011	19:57:40	1551	0.0	8.42	0.8	
10/14/2011	19:58:40	1550	0.0	8.42	0.8	
10/14/2011	19:59:40	1549	0.0	8.42	0.8	
10/14/2011	20:00:40	1548	0.0	8.42	0.8	
10/14/2011	20:02:40	1546	0.0	8.42	0.8	
10/14/2011	20:03:40	1545	0.0	8.42	0.8	
10/14/2011	20:04:40	1543	0.0	8.42	0.8	
10/14/2011	20:05:40	1542	0.0	8.42	0.9	
10/14/2011	20:06:40	1540	0.0	8.42	0.9	
10/14/2011	20:07:40	1539	0.0	8.42	0.9	
10/14/2011	20:08:40	1538	0.0	8.42	0.9	
10/14/2011	20:09:40	1537	0.0	8.42	0.9	
10/14/2011	20:10:40	1534	0.0	8.42	0.9	
10/14/2011	20:11:40	1534	0.0	8.42	0.9	
10/14/2011	20:12:40	1533	0.0	8.42	0.9	
10/14/2011	20:13:40	1531	0.0	8.42	1.0	
10/14/2011	20:14:01					End Casing Test
10/14/2011	20:14:01	1530	0.0	8.42	1.0	
10/14/2011	20:14:40	6	0.0	8.42	1.0	
10/14/2011	20:14:42					End Job
10/14/2011	20:14:42	5	0.0	8.42	1.0	

Well Durham 1-31	Field WFU/Swan	Job Start Oct/14/2011	Customer Shell Oil	Job Number BC74-00116
----------------------------	--------------------------	---------------------------------	------------------------------	---------------------------------

Post Job Summary

Average Pump Rates, bbl/min				Volume of Fluid Injected, bbl			
Slurry 1.8	N2	Mud 0.0	Maximum Rate 5.1	Total Slurry 97.0	Mud 0.0	Spacer 0.0	N2
Treating Pressure Summary, psi				Breakdown Fluid			
Maximum 3891	Final 6	Average 750	Bump Plug to	Breakdown	Type	Volume	Density
Avg. N2 Percent	Designed Slurry Volume 100.0 bbl	Displacement 69.0 bbl	Mix Water Temp	Cement Circulated to Surface? <input checked="" type="checkbox"/>	Volume		
Customer or Authorized Representative				Schlumberger Supervisor Tony Fowler	Washed Thru Perfs <input type="checkbox"/>	To	
					Circulation Lost <input type="checkbox"/>	Job Completed <input checked="" type="checkbox"/>	
					-	-	