

---

**WILLIAMS PRODUCTION RMT INC - EBUS**

---

SG 444-22  
GRAND VALLEY  
Garfield County , Colorado

**Cement Surface Casing**  
23-Dec-2011

**Post Job Report**

*The Road to Excellence Starts with Safety*

Sold To #: 300721	Ship To #: 2896005	Quote #:	Sales Order #: 9124194
Customer: WILLIAMS PRODUCTION RMT INC - EBUS	Customer Rep: Wilson, W.C.		
Well Name: SG	Well #: 444-22	API/UWI #: 05-045-20680	
Field: GRAND VALLEY	City (SAP): PARACHUTE	County/Parish: Garfield	State: Colorado
Lat: N 39.418 deg. OR N 39 deg. 25 min. 5.416 secs.	Long: W 108.086 deg. OR W -109 deg. 54 min. 48.967 secs.		
Contractor: H&P 280	Rig/Platform Name/Num: H&P 280		
Job Purpose: Cement Surface Casing			
Well Type: Development Well	Job Type: Cement Surface Casing		
Sales Person: MAYO, MARK	Srvc Supervisor: MAGERS, MICHAEL	MBU ID Emp #: 339439	

## Job Personnel

HES Emp Name	Exp Hrs	Emp #	HES Emp Name	Exp Hrs	Emp #	HES Emp Name	Exp Hrs	Emp #
ANDERSON, ADAM S	8	456683	MAGERS, MICHAEL Gerard	8	339439	SINCLAIR, DAN J	8	338784

## Equipment

HES Unit #	Distance-1 way	HES Unit #	Distance-1 way	HES Unit #	Distance-1 way	HES Unit #	Distance-1 way
10722398	60 mile	10871245	60 mile	11139330	60 mile	11259886	60 mile
11360881	60 mile						

## Job Hours

Date	On Location Hours	Operating Hours	Date	On Location Hours	Operating Hours	Date	On Location Hours	Operating Hours
12/23/2011	8	1						

TOTAL Total is the sum of each column separately

Job				Job Times			
Formation Name				Date	Time	Time Zone	
Formation Depth (MD)	Top	Bottom		Called Out	22 - Dec - 2011	21:30	MST
Form Type	BHST			On Location	23 - Dec - 2011	01:00	MST
Job depth MD	640. ft	Job Depth TVD	640. ft	Job Started	23 - Dec - 2011	07:30	MST
Water Depth	Wk Ht Above Floor			Job Completed	23 - Dec - 2011	08:27	MST
Perforation Depth (MD)	From	To		Departed Loc	23 - Dec - 2011	09:30	MST

## Well Data

Description	New / Used	Max pressure psig	Size in	ID in	Weight lbm/ft	Thread	Grade	Top MD ft	Bottom MD ft	Top TVD ft	Bottom TVD ft
-------------	------------	-------------------	---------	-------	---------------	--------	-------	-----------	--------------	------------	---------------

## Sales/Rental/3<sup>rd</sup> Party (HES)

Description	Qty	Qty uom	Depth	Supplier
PLUG,CMTG,TOP,9 5/8,HWE,8.16 MIN/9.06 MA	1	EA		

## Tools and Accessories

Type	Size	Qty	Make	Depth	Type	Size	Qty	Make	Depth	Type	Size	Qty	Make
Guide Shoe					Packer					Top Plug	9.625	1	HES
Float Shoe					Bridge Plug					Bottom Plug			
Float Collar					Retainer					SSR plug set			
Insert Float										Plug Container	9.625	1	HES
Stage Tool										Centralizers			

## Miscellaneous Materials

Gelling Agt	Conc	Surfactant	Conc	Acid Type	Qty	Conc	%
Treatment Fld	Conc	Inhibitor	Conc	Sand Type	Size	Qty	

## Fluid Data

Stage/Plug #: 1													
Fluid #	Stage Type	Fluid Name	Qty	Qty uom	Mixing Density lbm/gal	Yield ft <sup>3</sup> /sk	Mix Fluid Gal/sk	Rate bbl/min	Total Mix Fluid Gal/sk				

Stage/Plug #: 1



Stage/Plug #: 1									
Fluid #	Stage Type	Fluid Name	Qty	Qty uom	Mixing Density lbm/gal	Yield ft <sup>3</sup> /sk	Mix Fluid Gal/sk	Rate bbl/min	Total Mix Fluid Gal/sk
1	Water Spacer		20.00	bbl	8.34	.0	.0	.0	
2	Tail Cement	VERSACEM (TM) SYSTEM (452010)	170.0	sacks	12.8	2.11	11.75		11.75
3	Displacement Fluid		46.00	bbl	8.34	.0	.0	.0	
Calculated Values		Pressures		Volumes					
Displacement	46	Shut In: Instant		Lost Returns	0	Cement Slurry	63	Pad	
Top Of Cement	SURFACE	5 Min		Cement Returns	10	Actual Displacement	46	Treatment	
Frac Gradient		15 Min		Spacers	20	Load and Breakdown		Total Job	130
Rates									
Circulating	RIG	Mixing	5	Displacement	5	Avg. Job	5		
Cement Left In Pipe	Amount	42 ft	Reason	Shoe Joint					
Frac Ring # 1 @	ID	Frac ring # 2 @	ID	Frac Ring # 3 @	ID	Frac Ring # 4 @	ID		
The Information Stated Herein Is Correct				Customer Representative Signature					

*The Road to Excellence Starts with Safety*

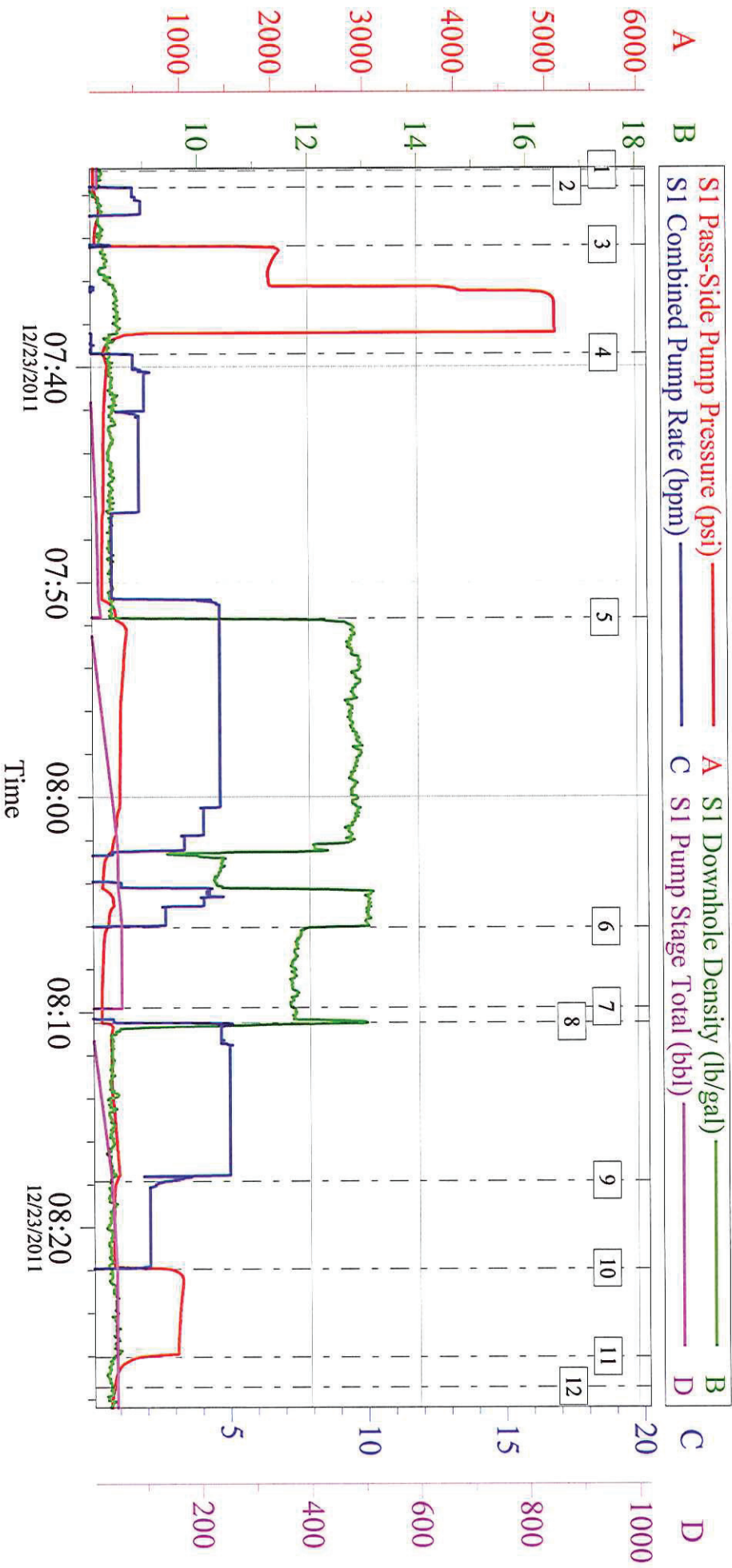
Sold To #: 300721	Ship To #: 2896005	Quote #:	Sales Order #: 9124194
Customer: WILLIAMS PRODUCTION RMT INC - EBUS	Customer Rep: Wilson, W.C.		
Well Name: SG	Well #: 444-22	API/UWI #:	05-045-20680
Field: GRAND VALLEY	City (SAP): PARACHUTE	County/Parish: Garfield	State: Colorado
Legal Description:			
Lat: N 39.418 deg. OR N 39 deg. 25 min. 5.416 secs.		Long: W 108.086 deg. OR W -109 deg. 54 min. 48.967 secs.	
Contractor: H&P 280	Rig/Platform Name/Num: H&P 280		
Job Purpose: Cement Surface Casing	Ticket Amount:		
Well Type: Development Well	Job Type: Cement Surface Casing		
Sales Person: MAYO, MARK	Srv Supervisor: MAGERS, MICHAEL	MBU ID Emp #:	339439

Activity Description	Date/Time	Cht #	Rate bbl/ min	Volume bbl		Pressure psig		Comments
				Stage	Total	Tubing	Casing	
Crew Leave Yard	12/22/2011 23:30							HES ALL PRESENT
Arrive At Loc	12/23/2011 01:00							RIG WAS PULLING DRILL PIPE WHEN HES ARRIVED. CASERS RAN CASING/RIG CIRCULATED FOR 45 MINUTES WHILE CASERS RIGGED DOWN
Assessment Of Location Safety Meeting	12/23/2011 01:15							LOCATION IN GOOD CONDITION/COLD OUTSIDE
Pre-Rig Up Safety Meeting	12/23/2011 01:50							JSA ON RIGGING UP
Rig-Up Equipment	12/23/2011 02:00							1 PICKUP 1 ELITE 1 BULK TRUCK
Safety Huddle	12/23/2011 07:15							RIG CREW AND HES ALL PRESENT
Start Job	12/23/2011 07:30							TD-640 TP-629 SJ- 42.1 MW-10.2 CSG- 9 5/8 32.3# N-80 OH- 13 1/2"
Other	12/23/2011 07:31		2	2			118.0	FILL LINES
Pressure Test	12/23/2011 07:34		0.5	0.5			4900. 0	PSI TEST OK
Pump Spacer 1	12/23/2011 07:39		2	20			155.0	FRESH WATER
Pump Tail Cement	12/23/2011 07:51		5	63.9			336.0	VERSACEM 170 SKS 12.8 PPG 2.11 FT3/SK 11.75 GAL/SK
Activity Description	Date/Time	Cht #	Rate bbl/ min	Volume bbl		Pressure psig		Comments
				Stage	Total	Tubing	Casing	



Shutdown	12/23/2011 08:06							WASHED UP ON TOP OF PLUG PER COMPANY REP
Drop Plug	12/23/2011 08:09							PLUG AWAY NO PROBLEMS
Pump Displacement	12/23/2011 08:10		5	46.1			280.0	FRESH WATER
Slow Rate	12/23/2011 08:17		2	36			240.0	GOT 10 BBLS OF CEMENT TO SURFACE
Bump Plug	12/23/2011 08:21		2	46.1			240.0	BUMPED PLUG
Check Floats	12/23/2011 08:26			46.1			990.0	FLOATS HELD/GOT 3/4 BBL BACK INTO TANK
End Job	12/23/2011 08:27							HAD GOOD CIRCULATION THROUGHOUT JOB/THANKS FOR USING HES AND THE CREW OF MIKE MAGERS

# WILLIAMS H&P 280 SG 444-22 SURFACE 9.625



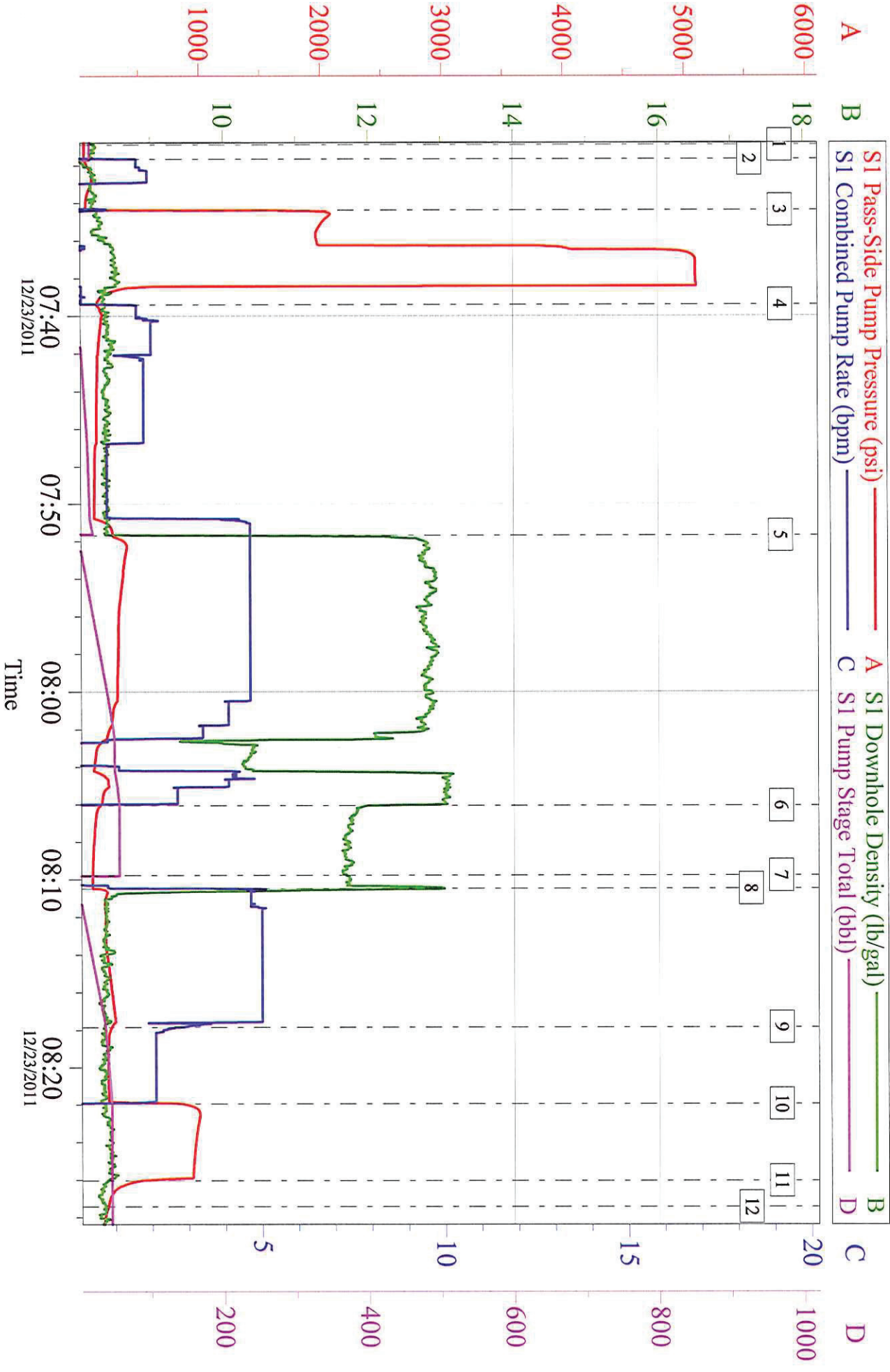
## Local Event Log

1	START JOB	07:30:54	2	FILL LINES	07:31:40
3	PRESSURE TEST	07:34:22	4	PUMP SPACER	07:39:25
5	PUMP TAIL CEMENT	07:51:42	6	SHUT DOWN	08:06:04
7	DROP PLUG	08:09:47	8	PUMP WATER DISPLACEMENT	08:10:29
9	SLOW RATE	08:17:51	10	BUMP PLUG	08:21:56
11	CHECK FLOATS	08:26:03	12	END JOB	08:27:25

Customer:	WILLIAMS H&P 280	Job Date:	23-Dec-2011	Sales Order #:	9124194
Well Description:	SG 444-22	Job Type:	SURFACE	ADC Used:	YES
Company Rep:	W.C. WILSON	Cement Supervisor:	MIKE MAGERS	Elite #	8
					DAN SINCLAIR

# WILLIAMS H&P 280 SG 444-22

## SURFACE 9.625



Customer: WILLIAMS H&P 280	Job Date: 23-Dec-2011	Sales Order #: 9124194
Well Description: SG 444-22	Job Type: SURFACE	ADC Used: YES
Company Rep: W.C. WILSON	Cement Supervisor: MIKE MAGERS	Elite # 8 DAN SINCLAIR

OptiCem v6.4.10  
23-Dec-11 09:24