

SYNERGY RESOURCES CORPORATION
20203 HIGHWAY 60
PLATTEVILLE, Colorado

Margil
Margil 34A

Ensign/33

Post Job Summary

Cement Production Casing

Date Prepared: 9/6/11
Version: 1

Service Supervisor: KELEHER, JASON

Submitted by: FRY, DOMINIK

HALLIBURTON

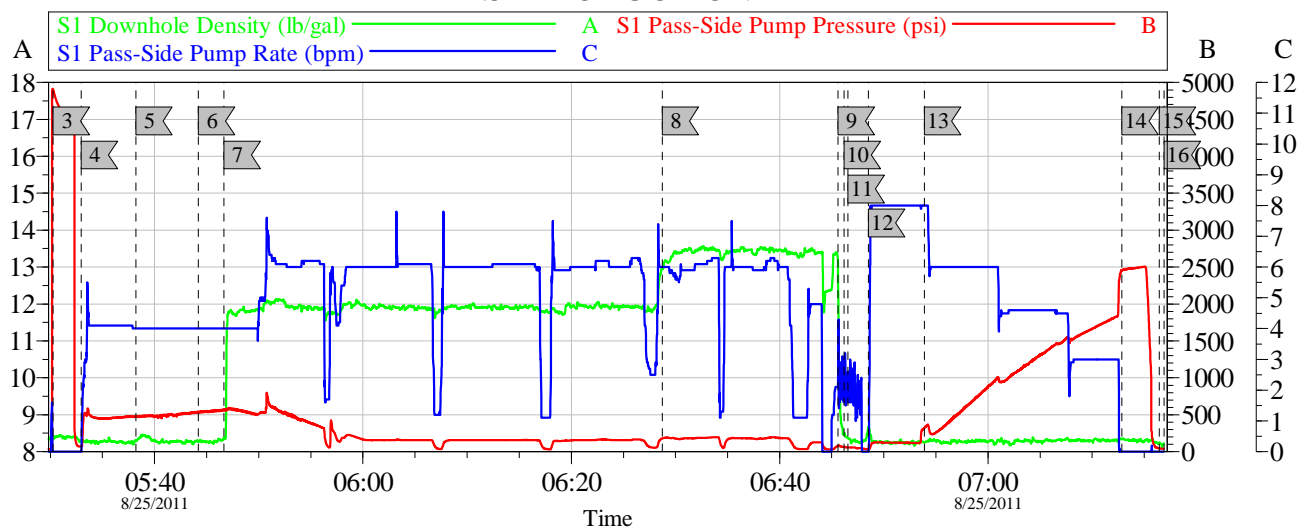
HALLIBURTON

Pumping Schedule

Stage /Plug #	Fluid #	Fluid Type	Fluid Name	Surface Density lbm/gal	Avg Rate bbl/min	Surface Volume	Downhole Volume
1	1	Spacer	Water Spacer	8.33	5.00	20.0 bbl	20.0 bbl
1	2	Spacer	MUD FLUSH III	8.40	5.00	24.0 bbl	24.0 bbl
1	3	Spacer	Water Spacer	8.33	5.00	10.0 bbl	10.0 bbl
1	4	Cement Slurry	Fillcem 12#	12.00	5.00	675.0 sacks	675.0 sacks
1	5	Cement Slurry	13.5# Fraccem	13.50	5.00	270.0 sacks	270.0 sacks
1	6	Spacer	ClaFix III Water Displacement	8.33	7.00	15.0 Gal	15.0 Gal

Data Acquisition

SYNERGY - MARGIL 34A 4.5" PRODUCTION



Global Event Log

Intersection	SPPP	Intersection	SPPP	Intersection	SPPP
1 Starting Job	05:00:35 122.0	2 Start Job	05:27:57 201.0	3 Test Lines	05:30:16 4902
4 Fresh Water Spacer	05:32:58 68.00	5 Mud Flush III	05:38:12 472.0	6 Fresh Water Spacer	05:44:12 541.0
7 12.0 FillCem B1	05:46:39 564.0	8 13.5 ppg FracCem B1	06:28:44 179.0	9 Shutdown	06:45:36 75.28
10 Clean Lines	06:46:11 62.00	11 Drop Top Plug	06:46:34 58.27	12 Pump Displacement	06:48:32 32.00
13 Displ Reached Cmmt	06:53:54 325.0	14 Bump Plug	07:12:51 2459	15 End Job	07:16:26 47.00
16 Ending Job	07:16:55 40.00				

Customer: SYNERGY
Well Description: PRODUCTION

Job Date: 25-Aug-2011
UWI: 05-123-33831-00

Sales Order #: 8414767

OptiCem v6.4.2
25-Aug-11 07:18

Service Supervisor Reports

Job Log

Date/Time	Chart #	Activity Code	Pump Rate	Cum Vol	Pump		Pressure (psig)	Comments
08/25/2011 04:00		Arrive at Location from Service Center						
08/25/2011 04:10		Assessment Of Location Safety Meeting						
08/25/2011 05:30		Test Lines						PRESSURE TEST TO 3500 PSI
08/25/2011 05:32		Pump Spacer 1	4	20			472.0	RIG WATER
08/25/2011 05:38		Pump Spacer 2	4	24			500.0	MUDFLUSH III MIXED IN RIG WATER
08/25/2011 05:44		Pump Spacer 1	4	10			539.0	RIG WATER
08/25/2011 05:46		Pump Lead Cement	6	233			160.0	675 SKS FILLCEM B1 MIXED AT 12.0 PPG WITH RIG WATER
08/25/2011 06:28		Pump Tail Cement	6	81			186.0	270 SKS FRACCEM MIXED AT 13.5 PPG WITH RIG WATER
08/25/2011 06:45		Shutdown						
08/25/2011 06:46		Drop Top Plug						PLUG PRE LOADED
08/25/2011 06:46		Clean Lines						
08/25/2011 06:48		Pump Displacement	3	124			1900.0	RIG WATER WITH CLAYFIX III ADDED
08/25/2011 07:12		Bump Plug					2400.0	GOOD RETURNS THROUGHOUT JOB. AT 116 BBL OF DISPLACEMENT
08/25/2011 07:15		Check Floats					2505.0	MUDFLUSH III BACK TO SURFACE
08/25/2011 07:16		End Job						FLOATS HELD

HALLIBURTON

The Road to Excellence Starts with Safety

Sold To #: 359915		Ship To #: 2873755		Quote #:		Sales Order #: 8414767	
Customer: SYNERGY RESOURCES CORPORATION				Customer Rep: HOPE, CRAIG			
Well Name: Margil			Well #: 34A			API/UWI #:	
Field: Wattenberg		City (SAP): MEAD		County/Parish: Weld			State: Colorado
Contractor: Ensign			Rig/Platform Name/Num: 33				
Job Purpose: Cement Production Casing							
Well Type: Development Well			Job Type: Cement Production Casing				
Sales Person: FLING, MATTHEW			Srvc Supervisor: KELEHER, JASON			MBU ID Emp #: 437348	

Job Personnel

HES Emp Name	Exp Hrs	Emp #	HES Emp Name	Exp Hrs	Emp #	HES Emp Name	Exp Hrs	Emp #
AARON, WESLEY J		403606	BARNES, BRIAN L		485204	CARPENTER, JACOB Paul		499500
FANTASIA, JOSEPH Brandon		485445	KELEHER, JASON E		437348	OZBUN, RYAN Jacob		475709

Equipment

HES Unit #	Distance-1 way	HES Unit #	Distance-1 way	HES Unit #	Distance-1 way	HES Unit #	Distance-1 way
10246780C	31 mile	10866493C	31 mile	10982754C	31 mile	11106651	31 mile
11410470C	31 mile	11562562	31 mile	11606995	31 mile		

Job Hours

Date	On Location Hours	Operating Hours	Date	On Location Hours	Operating Hours	Date	On Location Hours	Operating Hours
TOTAL			Total is the sum of each column separately					

Job

Formation Name					Job Times			
Formation Depth (MD)	Top	Bottom			Called Out	Date	Time	Time Zone
Form Type		BHST			On Location	25 - Aug - 2011	04:00	MST
Job depth MD	8026. ft	Job Depth TVD	8026. ft		Job Started	25 - Aug - 2011	05:27	MST
Water Depth		Wk Ht Above Floor			Job Completed	25 - Aug - 2011	07:16	MST
Perforation Depth (MD)	From	To			Departed Loc	25 - Aug - 2011	08:00	MST

Well Data

Description	New / Used	Max pressure psig	Size in	ID in	Weight lbm/ft	Thread	Grade	Top MD ft	Bottom MD ft	Top TVD ft	Bottom TVD ft
Open Hole				7.875				687.	8065.	.	.
Production Casing	New		4.5	4.	11.6			.	8026.		
Surface Casing	Used		8.625	8.097	24.		J-55	.	687.	.	.

Sales/Rental/3rd Party (HES)

Description	Qty	Qty uom	Depth	Supplier
SHOE,FLT,4-1/2 8RD,2-3/4 SSII	1	EA		
CLR,FLT,4-1/2 8RD,9.5-13.5PPF,2-3/4	1	EA		
CENTRALIZER ASSY - API - 4-1/2 CSG X	36	EA		
CLAMP - LIMIT - 4-1/2 - HINGED -	1	EA		
KIT,HALL WELD-A	1	EA		
PLUG ASSY - 3W LATCHDOWN - 4-1/2 IN	1	EA		
Description	Qty	Qty uom	Depth	Supplier
BAFFLE ASSY - 4-1/2 8RD LATCHDOWN PLUG	1	EA		

Tools and Accessories

HALLIBURTON

Type	Size	Qty	Make	Depth	Type	Size	Qty	Make	Depth	Type	Size	Qty	Make
Guide Shoe					Packer					Top Plug			
Float Shoe					Bridge Plug					Bottom Plug			
Float Collar					Retainer					SSR plug set			
Insert Float										Plug Container			
Stage Tool										Centralizers			

Miscellaneous Materials

Gelling Agt		Conc		Surfactant		Conc		Acid Type		Qty		Conc	%
Treatment Fld		Conc		Inhibitor		Conc		Sand Type		Size		Qty	

Fluid Data

Stage/Plug #: 1

Fluid #	Stage Type	Fluid Name	Qty	Qty uom	Mixing Density lbm/gal	Yield ft3/sk	Mix Fluid Gal/sk	Rate bbl/min	Total Mix Fluid Gal/sk
1	Water Spacer		20.00	bbl	8.33	.0	.0	5.0	
2	MUD FLUSH III	MUD FLUSH III - SBM (528788)	24.00	bbl	8.4	.0	.0	5.0	
3	Water Spacer		10.00	bbl	.	.0	.0	.0	
4	Fillcem 12#	EXTENDACEM (TM) SYSTEM (452981)	675.0	sacks	12.	1.94	10.42	5.0	10.42
	0.1 %	SUPER CBL, 50 LB PAIL (100003668)							
	10.42 Gal	FRESH WATER							
5	13.5# Fraccem	FRACCEM (TM) SYSTEM (452963)	270.0	sacks	13.5	1.69	8.04	5.0	8.04
	8.04 Gal	FRESH WATER							
6	ClaFix III Water Displacement		15.00	Gal	8.33	.0	.0	7.0	

Calculated Values

Pressures

Volumes

Displacement		Shut In: Instant		Lost Returns		Cement Slurry		Pad	
Top Of Cement		5 Min		Cement Returns		Actual Displacement		Treatment	
Frac Gradient		15 Min		Spacers		Load and Breakdown		Total Job	

Rates

Circulating		Mixing		Displacement		Avg. Job	
Cement Left In Pipe	Amount	18 ft	Reason	Shoe Joint			
Frac Ring # 1 @	ID	Frac ring # 2 @	ID	Frac Ring # 3 @	ID	Frac Ring # 4 @	ID

The Information Stated Herein Is Correct	Customer Representative Signature
--	-----------------------------------