

**HALLIBURTON**

---

**WILLIAMS PRODUCTION RMT INC - EBUS**

---

SG 531-27  
Parachute  
Garfield County , Colorado

**Cement Surface Casing**  
17-Oct-2011

**Post Job Summary**

*The Road to Excellence Starts with Safety*

Sold To #: 300721	Ship To #: 2884419	Quote #:	Sales Order #: 8543892
Customer: WILLIAMS PRODUCTION RMT INC - EBUS	Customer Rep: OAKS, RICK		
Well Name: SG	Well #: 531-27	API/UWI #: 05-045-20488	
Field: Parachute	City (SAP): PARACHUTE	County/Parish: Garfield	State: Colorado
Lat: N 39.415 deg. OR N 39 deg. 24 min. 55.3 secs.	Long: W 108.091 deg. OR W -109 deg. 54 min. 32.242 secs.		
Contractor: H&P 278	Rig/Platform Name/Num: H&P 278		
Job Purpose: Cement Surface Casing			
Well Type: Development Well	Job Type: Cement Surface Casing		
Sales Person: KOHL, KYLE	Srv Supervisor: KUKUS, CRAIG	MBU ID Emp #: 369124	

**Job Personnel**

HES Emp Name	Exp Hrs	Emp #	HES Emp Name	Exp Hrs	Emp #	HES Emp Name	Exp Hrs	Emp #
KUKUS, CRAIG A	4	369124	REEVES, BRANDON W	4	287883	SLAUGHTER, JESSE Dean	4	454315
SMITH, DUSTIN Michael	4	418015	JACOB DOUT	4				

**Equipment**

HES Unit #	Distance-1 way	HES Unit #	Distance-1 way	HES Unit #	Distance-1 way	HES Unit #	Distance-1 way
10001431	60 mile	10871245	60 mile	11071463	60 mile	11259883	60 mile
11360883	60 mile						

**Job Hours**

Date	On Location Hours	Operating Hours	Date	On Location Hours	Operating Hours	Date	On Location Hours	Operating Hours
10/17/11	4	1.5						

**TOTAL** Total is the sum of each column separately

Job				Job Times			
Formation Name				Date	Time	Time Zone	
Formation Depth (MD)	Top	Bottom		Called Out	17 - Oct - 2011	04:00	MST
Form Type		BHST		On Location	17 - Oct - 2011	08:00	MST
Job depth MD	1245. ft	Job Depth TVD	1245. ft	Job Started	17 - Oct - 2011	09:41	MST
Water Depth		Wk Ht Above Floor	4. ft	Job Completed	17 - Oct - 2011	10:34	MST
Perforation Depth (MD)	From	To		Departed Loc	17 - Oct - 2011	11:40	MST

**Well Data**

Description	New / Used	Max pressure psig	Size in	ID in	Weight lbm/ft	Thread	Grade	Top MD ft	Bottom MD ft	Top TVD ft	Bottom TVD ft
-------------	------------	-------------------	---------	-------	---------------	--------	-------	-----------	--------------	------------	---------------

**Sales/Rental/3<sup>rd</sup> Party (HES)**

Description	Qty	Qty uom	Depth	Supplier
PLUG,CMTG,TOP,9 5/8,HWE,8.16 MIN/9.06 MA	1	EA		

**Tools and Accessories**

Type	Size	Qty	Make	Depth	Type	Size	Qty	Make	Depth	Type	Size	Qty	Make
Guide Shoe					Packer					Top Plug	9 5/8	1	HES
Float Shoe					Bridge Plug					Bottom Plug			
Float Collar					Retainer					SSR plug set			
Insert Float										Plug Container	9 5/8	1	HES
Stage Tool										Centralizers			

**Miscellaneous Materials**

Gelling Agt	Conc	Surfactant	Conc	Acid Type	Qty	Conc	%
Treatment Fld	Conc	Inhibitor	Conc	Sand Type	Size	Qty	

**Fluid Data**

Stage/Plug #: 1									
Fluid #	Stage Type	Fluid Name	Qty	Qty uom	Mixing Density lbm/gal	Yield ft <sup>3</sup> /sk	Mix Fluid Gal/sk	Rate bbl/min	Total Mix Fluid Gal/sk

Stage/Plug #: 1									
Fluid #	Stage Type	Fluid Name	Qty	Qty uom	Mixing Density lbm/gal	Yield ft <sup>3</sup> /sk	Mix Fluid Gal/sk	Rate bbl/min	Total Mix Fluid Gal/sk
1	Water Spacer		20.00	bbl	8.34	.0	.0	4	
2	Lead Cement	VERSACEM (TM) SYSTEM (452010)	160.0	sacks	12.3	2.38	13.75	7	13.75
	13.75 Gal	FRESH WATER							
3	Tail Cement	VERSACEM (TM) SYSTEM (452010)	160.0	sacks	12.8	2.11	11.75	7	11.75
	11.75 Gal	FRESH WATER							
4	Displacement Fluid		92.00	bbl	8.34	.0	.0	8	
Calculated Values		Pressures		Volumes					
Displacement	93	Shut In: Instant		Lost Returns	0	Cement Slurry	128	Pad	
Top Of Cement	SURFACE	5 Min		Cement Returns	35	Actual Displacement	93	Treatment	
Frac Gradient		15 Min		Spacers	20	Load and Breakdown		Total Job	240
Rates									
Circulating	RIG	Mixing	7	Displacement	8	Avg. Job	7.5		
Cement Left In Pipe	Amount	43.28 ft	Reason	Shoe Joint					
Frac Ring # 1 @	ID	Frac ring # 2 @	ID	Frac Ring # 3 @	ID	Frac Ring # 4 @	ID		
The Information Stated Herein Is Correct				Customer Representative Signature					



*The Road to Excellence Starts with Safety*

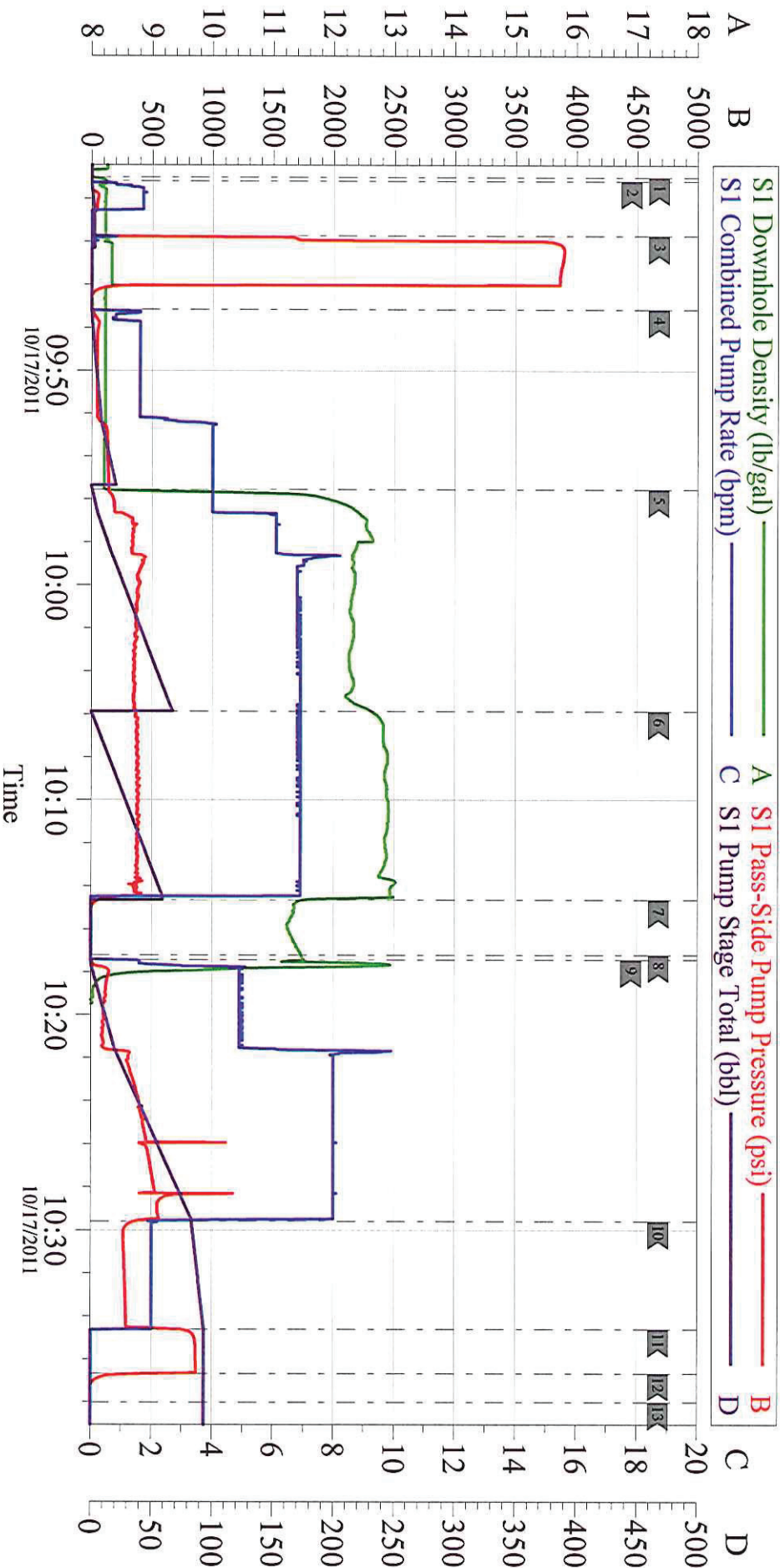
Sold To #: 300721	Ship To #: 2884419	Quote #:	Sales Order #: 8543892
Customer: WILLIAMS PRODUCTION RMT INC - EBUS	Customer Rep: OAKS, RICK		
Well Name: SG	Well #: 531-27	API/UWI #: 05-045-20488	
Field: Parachute	City (SAP): PARACHUTE	County/Parish: Garfield	State: Colorado
Legal Description:			
Lat: N 39.415 deg. OR N 39 deg. 24 min. 55.3 secs.		Long: W 108.091 deg. OR W -109 deg. 54 min. 32.242 secs.	
Contractor: H&P 278	Rig/Platform Name/Num: H&P 278		
Job Purpose: Cement Surface Casing		Ticket Amount:	
Well Type: Development Well	Job Type: Cement Surface Casing		
Sales Person: KOHL, KYLE	Srv Supervisor: KUKUS, CRAIG	MBU ID Emp #: 369124	

Activity Description	Date/Time	Cht #	Rate bbl/min	Volume bbl		Pressure psig		Comments
				Stage	Total	Tubing	Casing	
Call Out	10/17/2011 04:00							
Depart Yard Safety Meeting	10/17/2011 06:45							SAFETY MEETING INVOLVING THE ENTIRE CMT CREW
Arrive At Loc	10/17/2011 08:00							RIG ON BOTTOM/ RIG LOAD UP CSG CREW/MOVE CAT WALK
Circulate Well	10/17/2011 08:00							RIG
Assessment Of Location Safety Meeting	10/17/2011 08:10							ASSESSMENT OF LOCATION INVOLVING THE ENTIRE CMT CREW
Pre-Rig Up Safety Meeting	10/17/2011 08:35							SAFETY MEETING INVOLVING THE ENTIRE CMT CREW
Rig-Up Equipment	10/17/2011 08:45							RIG UP TO STAND PIPE / WATER TO UP RIGHT
Pre-Job Safety Meeting	10/17/2011 09:30							SAFETY MEETING INVOLVING EVERYONE ON LOCATION
Start Job	10/17/2011 09:41							TD 1245 FT TP 1205.86 FT SJ 43.28 FT OH 13.5 IN PIPE 9 5/8 IN 32.3 # MUD WT 10.4 # LANDING JT 28 FT
Other	10/17/2011 09:41		2	2			71.0	FILL LINES WITH FRESH WATER
Pressure Test	10/17/2011 09:43		0.5			3500.0		PRESSURE TEST GOOD



Activity Description	Date/Time	Cht #	Rate bbl/min	Volume bbl		Pressure psig		Comments
				Stage	Total	Tubing	Casing	
Pump Spacer 1	10/17/2011 09:47		4	20			151.0	FRESH WATER SPACER
Pump Lead Cement	10/17/2011 09:55		7	67.8			447.0	PUMP 160 SKS LEAD CEMENT AT 12.3 PPG 2.38 Y 13.73 GAL/SK
Pump Tail Cement	10/17/2011 10:05		7	60.1			411.0	PUMP 160 SKS TAIL CEMENT AT 12.8 PPG 2.11 Y 11.75 GAL/SK
Shutdown	10/17/2011 10:14							SHUT DOWN/READY TUB FOR WASH UP ON TOP OF PLUG
Drop Top Plug	10/17/2011 10:17							PLUG LEFT THE PLUG CONTAINER
Pump Displacement	10/17/2011 10:17		8	93.7			570.0	PUMP H2O DISPLACEMENT
Slow Rate	10/17/2011 10:29		2	83			330.0	SLOW RATE TO 2 BBL MIN LAST 10 BBLS
Bump Plug	10/17/2011 10:34		2	93			865.0	PLUG LANDED AT 340 PSI
Check Floats	10/17/2011 10:36							FLOATS HELD / GOT 1 BBL BACK TO TANKS
End Job	10/17/2011 10:38							HAD GOOD CIRCULATION THRU OUT THE JOB / GOT CEMENT TO SURFACE TOTAL 35 BBLS
Pre-Rig Down Safety Meeting	10/17/2011 10:40							SAFETY MEETING INVOLVING THE ENTIRE CMT CREW
Rig-Down Equipment	10/17/2011 10:45							RIG FLOOR DOWN/ WASH UP PUMP UNIT
Safety Meeting - Departing Location	10/17/2011 11:30							SAFETY MEETING INVOLVING THE ENTIRE CMT CREW
Comment	10/17/2011 11:40							THANK YOU FOR USING HALLIBURTON, CRAIG KUKUS AND CREW

# WILLIAMS SURFACE HP 278



## Local Event Log

1	START JOB	09:41:00	2	PRIME LINES	09:41:11	3	PRESSURE TEST	09:43:44
4	PUMP H2O SPACER	09:47:10	5	PUMP LEAD CEMENT	09:55:32	6	PUMP TAIL CEMENT	10:05:53
7	SHUT DOWN	10:14:39	8	DROP PLUG	10:17:12	9	PUMP H2O DISPLACEMENT	10:17:26
10	SLOW RATE	10:29:36	11	BUMP PLUG	10:34:37	12	CHECK FLOATS	10:36:40
13	END JOB	10:38:01						

Customer: **WILLIAMS**  
Well Description: **SG 531-27**  
Company Rep: **RICK OAKS**

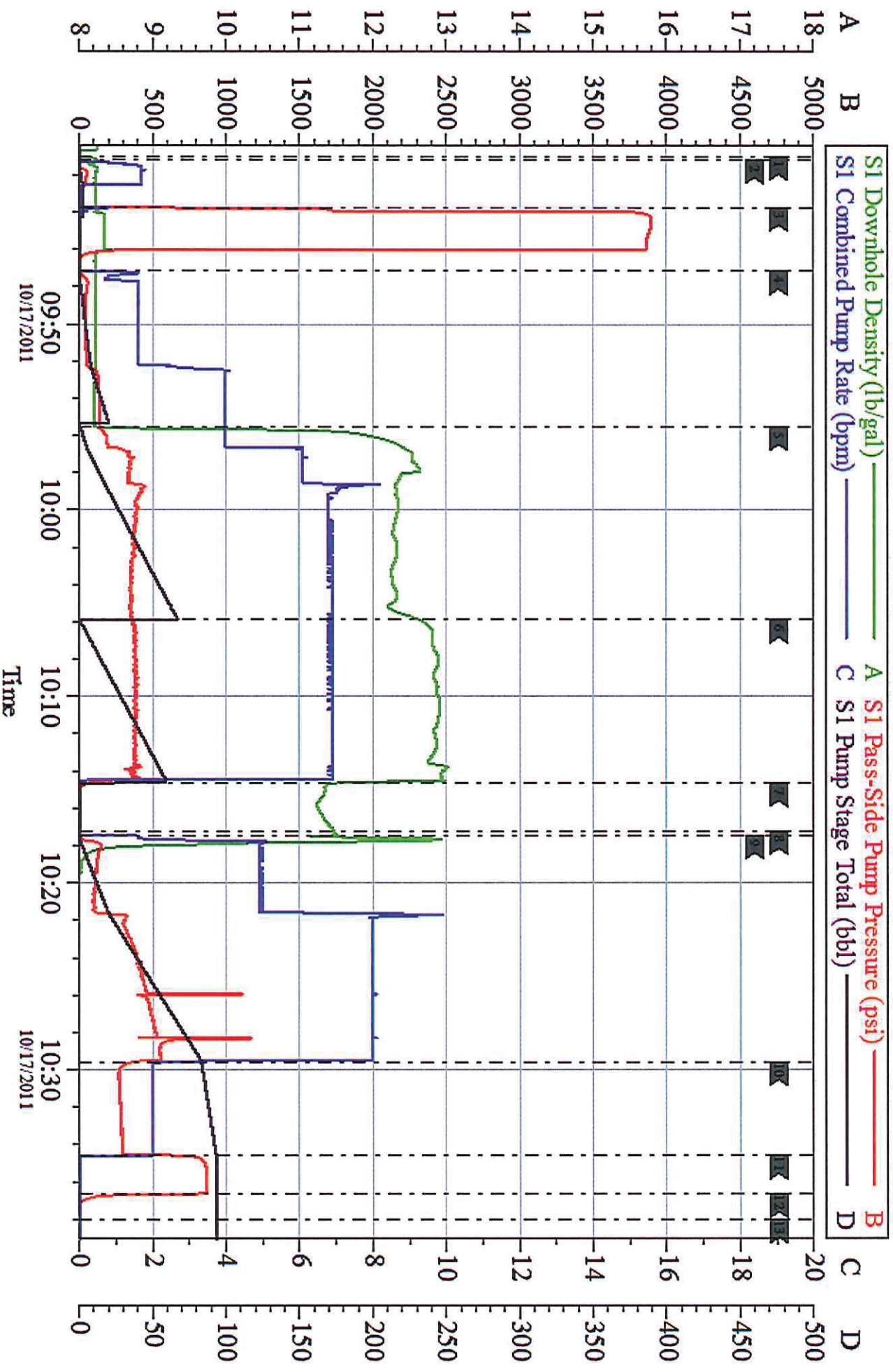
Job Date: **17-Oct-2011**  
Job Type: **SURFACE**  
Cement Supervisor: **CRAIG KUKUS**

Sales Order #: **8543892**  
ADC Used: **YES**  
Elite #/Operator: **E-7 DUSTIN SMITH**



# WILLIAMS

## SURFACE HP 278



Customer:	WILLIAMS	Job Date:	17-Oct-2011	Sales Order #:	8543892
Well Description:	SG 531-27	Job Type:	SURFACE	ADC Used:	YES
Company Rep:	RICK OAKS	Cement Supervisor:	CRAIG KUKUS	File #/Operator:	E-7 DUSTIN SMITH

**HALLIBURTON**

---

# **WILLIAMS PRODUCTION RMT INC - EBUS**

---

SG 531-27  
GRAND VALLEY  
Garfield County , Colorado

**Squeeze Perfs**

**Job Site Documents**



*The Road to Excellence Starts with Safety*

Sold To #: 300721	Ship To #: 2884419	Quote #:	Sales Order #: 8493102
Customer: WILLIAMS PRODUCTION RMT INC - EBUS		Customer Rep: SNOW, MIKE	
Well Name: SG		Well #: 531-27	API/UWI #: 05-045-20488
Field: GRAND VALLEY	City (SAP): PARACHUTE	County/Parish: Garfield	State: Colorado
Lat: N 39.415 deg. OR N 39 deg. 24 min. 54 secs.		Long: W 108.091 deg. OR W -109 deg. 54 min. 32.4 secs.	
Contractor: WORKOVER		Rig/Platform Name/Num: WORKOVER	
Job Purpose: Squeeze Perfs			
Well Type: Development Well		Job Type: Squeeze Perfs	
Sales Person: KOHL, KYLE		Srvc Supervisor: ROSS, CHARLES	MBU ID Emp #: 453128

**Job Personnel**

HES Emp Name	Exp Hrs	Emp #	HES Emp Name	Exp Hrs	Emp #	HES Emp Name	Exp Hrs	Emp #
BECK, MICHAEL George	9	489151	BLANCHETTE, JAMES George	9	371360	DOUT, JACOB J	9	430298
ROSS, CHARLES Raymond	9	453128	SPARKS, CLIFFORD Paul	9	502476			

**Equipment**

HES Unit #	Distance-1 way	HES Unit #	Distance-1 way	HES Unit #	Distance-1 way	HES Unit #	Distance-1 way
10011429	60 mile	10551730C	60 mile	10565341	60 mile	10741119	60 mile
10973571	60 mile	11164589	60 mile	11259881	60 mile		

**Job Hours**

Date	On Location Hours	Operating Hours	Date	On Location Hours	Operating Hours	Date	On Location Hours	Operating Hours
11/7/2011	4	3						
TOTAL			Total is the sum of each column separately					

**Job**

**Job Times**

Formation Name							Date	Time	Time Zone
Formation Depth (MD)	Top			Bottom		Called Out	07 - Nov - 2011	12:50	MST
Form Type				BHST		On Location	07 - Nov - 2011	04:47	MST
Job depth MD	4766. ft			Job Depth TVD	4766. ft	Job Started	07 - Nov - 2011	09:19	MST
Water Depth				Wk Ht Above Floor		Job Completed	07 - Nov - 2011	11:36	MST
Perforation Depth (MD)	From	4,766.00 ft		To	4,766.00 ft	Departed Loc	07 - Nov - 2011	12:45	MST

**Well Data**

Description	New / Used	Max pressure psig	Size in	ID in	Weight lbm/ft	Thread	Grade	Top MD ft	Bottom MD ft	Top TVD ft	Bottom TVD ft
Perforation Interval								4766.	4766.	.	.
4 1/2" CASING	Unknown		4.5	4.	11.6		J-55	.	5021.		
2 3/8" TUBING	Unknown		2.375	1.995	4.7		J-55	.	4650.		

**Sales/Rental/3<sup>rd</sup> Party (HES)**

Description	Qty	Qty uom	Depth	Supplier
ADC (AUTO DENSITY CTRL) SYS, /JOB,ZI	1	JOB		
R/A DENSOMETER W/CHART RECORDER,/JOB,ZI	1	JOB		
PORT. DAS W/CEMWIN;ACQUIRE W/HES, ZI	1	JOB		

**Tools and Accessories**

Type	Size	Qty	Make	Depth	Type	Size	Qty	Make	Depth	Type	Size	Qty	Make
Guide Shoe					Packer					Top Plug			
Float Shoe					Bridge Plug					Bottom Plug			
Float Collar					Retainer					SSR plug set			
Insert Float										Plug Container			
Stage Tool										Centralizers			

Miscellaneous Materials												
Gelling Agt		Conc		Surfactant		Conc		Acid Type		Qty		Conc %
Treatment Fld		Conc		Inhibitor		Conc		Sand Type		Size		Qty
Fluid Data												
Stage/Plug #: 1												
Fluid #	Stage Type	Fluid Name			Qty	Qty uom	Mixing Density lbm/gal	Yield ft3/sk	Mix Fluid Gal/sk	Rate bbl/min	Total Mix Fluid Gal/sk	
1	Water Spacer				8.00	bbl	8.33	.0	.0	.0		
2	Tail Cement	SQUEEZECEM (TM) SYSTEM (452971)			500.0	sacks	17.	.99	3.76		3.76	
		3.76 Gal			FRESH WATER							
3	Displacement				18.00	bbl	8.33	.0	.0	.0		
Calculated Values			Pressures			Volumes						
Displacement	18	Shut In: Instant			Lost Returns		Cement Slurry		88.2	Pad		
Top Of Cement		5 Min			Cement Returns		3	Actual Displacement		18.25	Treatment	
Frac Gradient		15 Min			Spacers		8	Load and Breakdown			Total Job 114.85	
Rates												
Circulating		Mixing		2	Displacement		0.5	Avg. Job				
Cement Left In Pipe	Amount	0 ft	Reason	Shoe Joint								
Frac Ring # 1 @	ID	Frac ring # 2 @	ID	Frac Ring # 3 @	ID	Frac Ring # 4 @	ID					
The Information Stated Herein Is Correct					Customer Representative Signature							



*The Road to Excellence Starts with Safety*

Sold To #: 300721	Ship To #: 2884419	Quote #:	Sales Order #: 8493102
Customer: WILLIAMS PRODUCTION RMT INC - EBUS	Customer Rep: SNOW, MIKE		
Well Name: SG	Well #: 531-27	API/UWI #: 05-045-20488	
Field: GRAND VALLEY	City (SAP): PARACHUTE	County/Parish: Garfield	State: Colorado
Legal Description:			
Lat: N 39.415 deg. OR N 39 deg. 24 min. 54 secs.		Long: W 108.091 deg. OR W -109 deg. 54 min. 32.4 secs.	
Contractor: WORKOVER	Rig/Platform Name/Num: WORKOVER		
Job Purpose: Squeeze Perfs	Ticket Amount:		
Well Type: Development Well	Job Type: Squeeze Perfs		
Sales Person: KOHL, KYLE	Srv Supervisor: ROSS, CHARLES	MBU ID Emp #: 453128	

Activity Description	Date/Time	Cht #	Rate bbl/min	Volume bbl		Pressure psig		Comments
				Stage	Total	Tubing	Casing	
Call Out	11/07/2011 00:50							
Pre-Convoy Safety Meeting	11/07/2011 03:25							WITH ALL HES EE'S
Depart from Service Center or Other Site	11/07/2011 03:30							
Arrive at Location from Service Center	11/07/2011 04:47							
Assessment Of Location Safety Meeting	11/07/2011 05:15							WITH ALL HES EE'S
Pre-Rig Up Safety Meeting	11/07/2011 05:25							WITH ALL HES EE'S
Rig-Up Equipment	11/07/2011 05:30							1-F550 PICKUP, 1-ELITE PUMP TRUCK, 1-660 CEMENT BULK TRUCK, 1-CEMENT BODYLOAD, 1-HARD LINE TO RIG AND WASH UP OUT TO THE PIT FROM MANIFOLD, 1- 2 3/8" SWAGE.
Pre-Job Safety Meeting	11/07/2011 06:19							WITH ALL HES EE'S AND RIG CREW
Start Job	11/07/2011 06:19							TP 5021, MW# 8.4, PACKER @ 4650, PERFS @ 4766, PRODUCTION CASING , 11.6# J-55 4 1/2"
Pump Water	11/07/2011 09:27		1	1			700.0	FILL LINES, FRESH WATER
Test Lines	11/07/2011 09:29							TEST TO 5000 PSI
Injection Test	11/07/2011 09:39		1	8.4			1571.0	ISIP 1500 PSI.
Activity Description	Date/Time	Cht	Rate bbl/min	Volume bbl		Pressure psig		Comments

Sold To #: 300721

Ship To #: 2884419

Quote # :

Sales Order # :

8493102

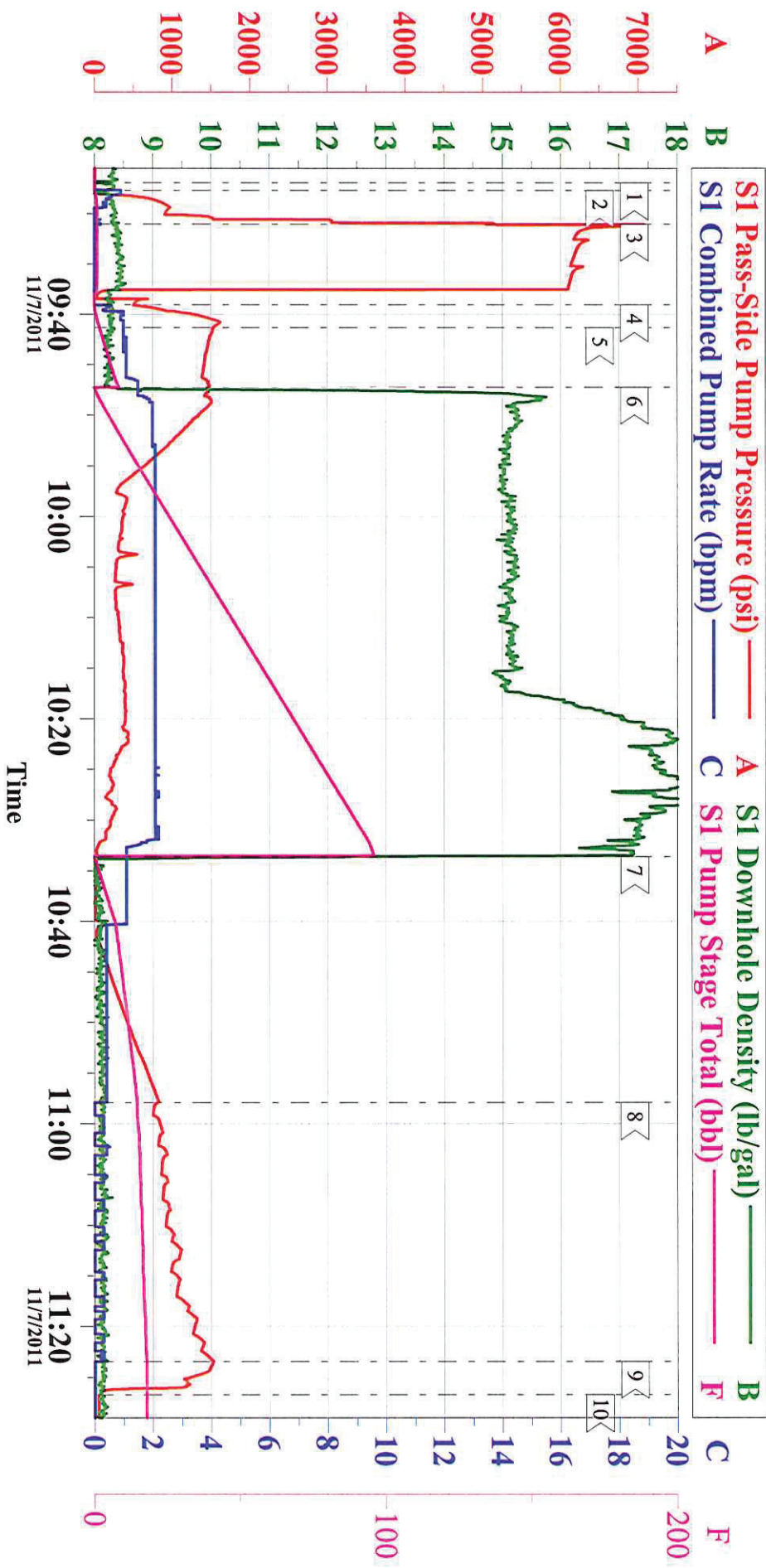
SUMMIT Version: 7.2.27

Wednesday, November 09, 2011 08:46:00

		#		Stage	Total	Tubing	Casing	
Pump Tail Cement	11/07/2011 09:47		2	88.2			1500. 0	500 SKS OF SQUEEZECM PUMPED @ 17 PPG, YIELD 0.99, WATER 3.76
Pump Displacement	11/07/2011 10:33		0.5	15			807.0	FRESH WATER
Shutdown	11/07/2011 10:58							
Stage Cement	11/07/2011 11:01		0.5	3.25			1527. 0	HESITATED AND RESUMED 11 TIMES
Shutdown	11/07/2011 11:25				18.25			
Reverse Circ Well	11/07/2011 11:26							
End Job	11/07/2011 11:27							GOOD RETURNS THROUGHOUT JOB, MOVEMENT OF PIPE THROUGHOUT JOB, 86.65 BBLs OF CEMENT PUMPED THROUGH THE PERFS
Post-Job Safety Meeting (Pre Rig-Down)	11/07/2011 11:30							
Rig-Down Equipment	11/07/2011 11:35							
Pre-Convoy Safety Meeting	11/07/2011 12:35							
Depart Location for Service Center or Other Site	11/07/2011 12:40							THANKS FOR USING GRAND JUNCTION HALLIBURTON CEMENT DEPARTMENT, CHUCK ROSS AND CREW

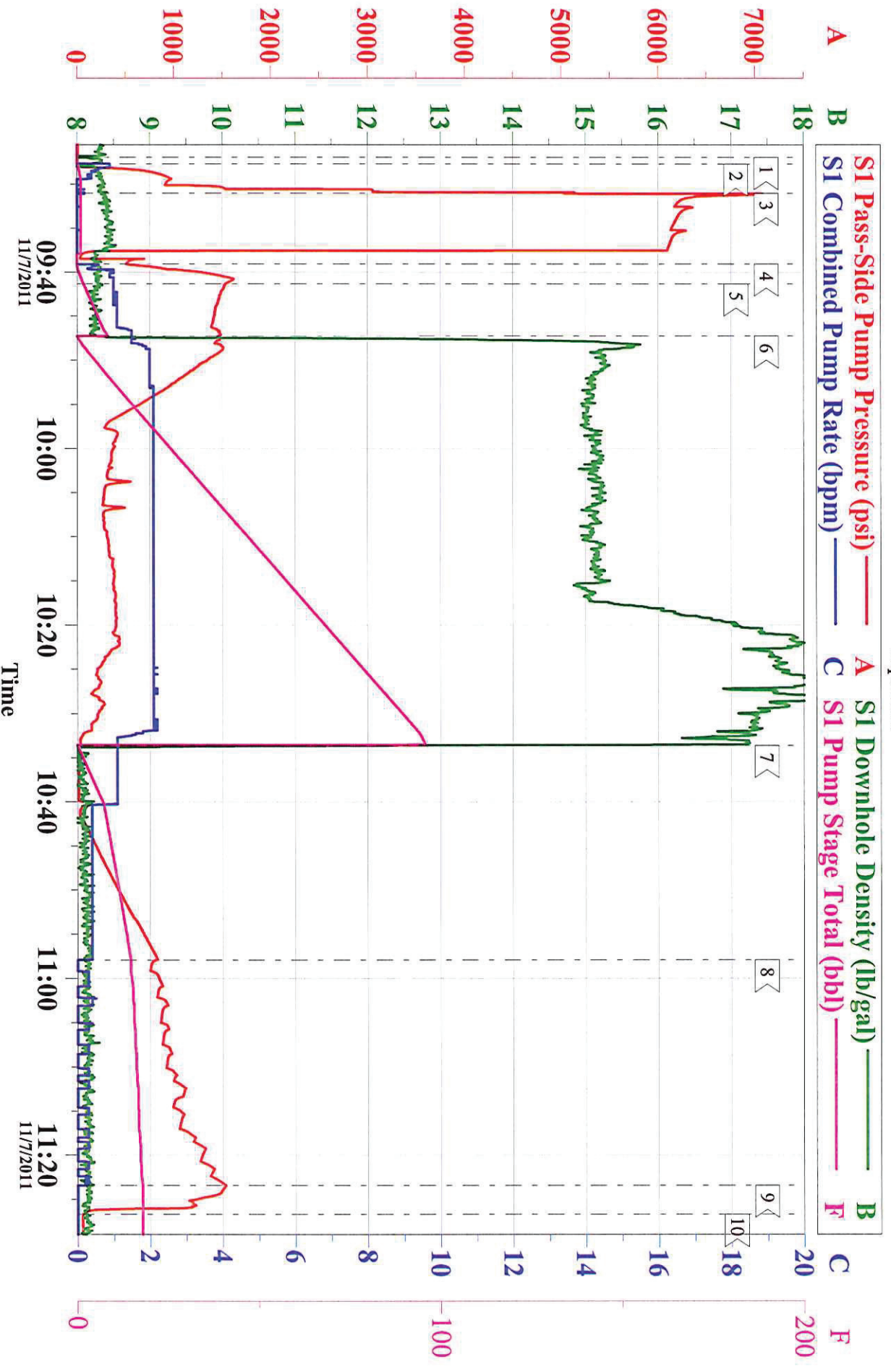


# Williams - SG 531-27 Squeeze



Customer:	Williams	Job Date:	07-Nov-2011	Sales Order #:	8493102
Well Description:	SG 531-27	Job type:	Squeeze	ADC Used:	Yes
Customer Rep:	Mike Snow	Service Supervisor:	Chuck Ross	Operator/ Pump:	Jacob Dout

# Williams - SG 531-27 Squeeze



Customer: Williams  
Well Description: SG 531-27  
Customer Rep: Mike Snow

Job Date: 07-Nov-2011  
Job type: Squeeze  
Service Supervisor: Chuck Ross

Sales Order #: 8493102  
ADC Used: Yes  
Operator/ Pump: Jacob Dout

# HALLIBURTON

## Water Analysis Report

Company: WILLIAMS  
Submitted by: CHUCK ROSS  
Attention: JON TROUT  
Lease: SG  
Well #: 531-27

Date: 11/7/2011  
Date Rec.: 11/7/2011  
S.O.#: 8493102  
Job Type: SQUEEZE

Specific Gravity	<i>MAX</i>	<b>1</b>
pH	<i>8</i>	<b>8</b>
Potassium (K)	<i>5000</i>	<b>200 Mg / L</b>
Calcium (Ca)	<i>500</i>	<b>Mg / L</b>
Iron (FE2)	<i>300</i>	<b>15 Mg / L</b>
Chlorides (Cl)	<i>3000</i>	<b>0 Mg / L</b>
Sulfates (SO <sub>4</sub> )	<i>1500</i>	<b>200 Mg / L</b>
Chlorine (Cl <sub>2</sub> )		<b>NA Mg / L</b>
Temp	<i>40-80</i>	<b>76 Deg</b>
Total Dissolved Solids		<b>440 Mg / L</b>

Respectfully: CHUCK ROSS

Title: CEMENTING SUPERVISOR

Location: Grand Junction, CO

NOTICE:

This report is limited to the described sample tested. Any person using or relying on this report agrees that Halliburton shall not be liable for any loss or damage whether due to act or omission resulting from such report or



**HALLIBURTON**

---

# **WILLIAMS PRODUCTION RMT INC - EBUS**

---

**SG 531-27  
GRAND VALLEY  
Garfield County , Colorado**

**Squeeze Perfs**  
**02-Nov-2011**

**Post Job Summary**

*The Road to Excellence Starts with Safety*

Sold To #: 300721	Ship To #: 2884419	Quote #:	Sales Order #: 8493095
Customer: WILLIAMS PRODUCTION RMT INC - EBUS	Customer Rep: SNOW, MIKE		
Well Name: SG	Well #: 531-27	API/UWI #: 05-045-20488	
Field: GRAND VALLEY	City (SAP): PARACHUTE	County/Parish: Garfield	State: Colorado
Lat: N 39.415 deg. OR N 39 deg. 24 min. 55.3 secs.	Long: W 108.091 deg. OR W -109 deg. 54 min. 32.242 secs.		
Contractor: WORKOVER	Rig/Platform Name/Num: WORKOVER		
Job Purpose: Squeeze Perfs			
Well Type: Development Well	Job Type: Squeeze Perfs		
Sales Person: KOHL, KYLE	Srvc Supervisor: ANGLESTEIN, TROY	MBU ID Emp #: 436099	

**Job Personnel**

HES Emp Name	Exp Hrs	Emp #	HES Emp Name	Exp Hrs	Emp #	HES Emp Name	Exp Hrs	Emp #
ANGLESTEIN, TROY Edward WM	11	436099	HONE, AARON D	11	381285	KEANE, JOHN Donovon	11	486519
PHILLIPS, MARK Bejar	11	445272	WINKER, STEVEN	11	478776			

**Equipment**

HES Unit #	Distance-1 way	HES Unit #	Distance-1 way	HES Unit #	Distance-1 way	HES Unit #	Distance-1 way
10722398	60 mile	11139330	60 mile	11259884	60 mile	11360871	60 mile
11542767	60 mile						

**Job Hours**

Date	On Location Hours	Operating Hours	Date	On Location Hours	Operating Hours	Date	On Location Hours	Operating Hours
11/2/11	11	3						

**TOTAL** Total is the sum of each column separately

**Job**

**Job Times**

Formation Name			Date	Time	Time Zone
Formation Depth (MD)	Top	Bottom	Called Out	02 - Nov - 2011 06:00	MST
Form Type		BHST	On Location	02 - Nov - 2011 09:00	MST
Job depth MD	5012. ft	Job Depth TVD	Job Started	02 - Nov - 2011 15:24	MST
Water Depth		Wk Ht Above Floor	Job Completed	02 - Nov - 2011 17:43	MST
Perforation Depth (MD)	From 4,810.00 ft	To 4,810.00 ft	Departed Loc	02 - Nov - 2011 20:00	MST

**Well Data**

Description	New / Used	Max pressure psig	Size in	ID in	Weight lbm/ft	Thread	Grade	Top MD ft	Bottom MD ft	Top TVD ft	Bottom TVD ft
Perforation Interval								4810.	4810.	.	.

**Sales/Rental/3<sup>rd</sup> Party (HES)**

Description	Qty	Qty uom	Depth	Supplier
ADC (AUTO DENSITY CTRL) SYS, /JOB,ZI	1	JOB		
R/A DENSOMETER W/CHART RECORDER,/JOB,ZI	1	JOB		
PORT. DAS W/CEMWIN;ACQUIRE W/HES, ZI	1	JOB		

**Tools and Accessories**

Type	Size	Qty	Make	Depth	Type	Size	Qty	Make	Depth	Type	Size	Qty	Make
Guide Shoe					Packer					Top Plug			
Float Shoe					Bridge Plug					Bottom Plug			
Float Collar					Retainer	4.5	1		4900	SSR plug set			
Insert Float										Plug Container			
Stage Tool										Centralizers			

**Miscellaneous Materials**

Gelling Agt	Conc	Surfactant	Conc	Acid Type	Qty	Conc	%
Treatment Fld	Conc	Inhibitor	Conc	Sand Type	Size	Qty	

**Fluid Data**

Stage/Plug #: 1



**HALLIBURTON*****Cementing Job Summary***

Fluid #	Stage Type	Fluid Name	Qty	Qty uom	Mixing Density lbm/gal	Yield ft <sup>3</sup> /sk	Mix Fluid Gal/sk	Rate bbl/min	Total Mix Fluid Gal/sk
1	Water Spacer		18.00	bbl	8.33	.0	.0	3	
2	Lead Cement	HALCEM (TM) SYSTEM (452986)	350.0	sacks	13.5	1.41	6.43	1.5	6.43
3	Tail Cement	SQUEEZECHEM (TM) SYSTEM (452971)	200.0	sacks	17.	.99	3.76	1.5	3.76
		3.76 Gal FRESH WATER							
4	Displacement		19.00	bbl	8.33	.0	.0	1.5	
<b>Calculated Values</b>		<b>Pressures</b>		<b>Volumes</b>					
Displacement	19	Shut In: Instant	1330	Lost Returns		Cement Slurry	104.7	Pad	
Top Of Cement		5 Min	850	Cement Returns		Actual Displacement	19	Treatment	
Frac Gradient		15 Min		Spacers		Load and Breakdown		Total Job	138.7
<b>Rates</b>									
Circulating		Mixing	1.5	Displacement	1.5	Avg. Job		1.5	
Cement Left In Pipe	Amount	0 ft	Reason	Shoe Joint					
Frac Ring # 1 @	ID		Frac ring # 2 @	ID		Frac Ring # 3 @	ID		Frac Ring # 4 @
The Information Stated Herein Is Correct				Customer Representative Signature					

*The Road to Excellence Starts with Safety*

Sold To #: 300721	Ship To #: 2884419	Quote #:	Sales Order #: 8493095
Customer: WILLIAMS PRODUCTION RMT INC - EBUS	Customer Rep: SNOW, MIKE		
Well Name: SG	Well #: 531-27	API/UWI #: 05-045-20488	
Field: GRAND VALLEY	City (SAP): PARACHUTE	County/Parish: Garfield	State: Colorado
Legal Description:			
Lat: N 39.415 deg. OR N 39 deg. 24 min. 55.3 secs.		Long: W 108.091 deg. OR W -109 deg. 54 min. 32.242 secs.	
Contractor: WORKOVER	Rig/Platform Name/Num: WORKOVER		
Job Purpose: Squeeze Perfs	Ticket Amount:		
Well Type: Development Well	Job Type: Squeeze Perfs		
Sales Person: KOHL, KYLE	Srv Supervisor: ANGLESTEIN, TROY	MBU ID Emp #: 436099	

Activity Description	Date/Time	Cht #	Rate bbl/min	Volume bbl		Pressure psig		Comments
				Stage	Total	Tubing	Casing	
Call Out	11/02/2011 06:00							
Pre-Convoy Safety Meeting	11/02/2011 08:00							ALL HES EMPLOYEES
Arrive At Loc	11/02/2011 09:00							CREW ARRIVED AT 09:00 2ND BULK TRUCK ARRIVED AT 15:45
Assessment Of Location Safety Meeting	11/02/2011 09:15							ALL HES EMPLOYEES
Pre-Job Safety Meeting	11/02/2011 09:34							ALL HES EMPLOYEES, RIG CREW, CO REP AND ANY 3RD PARTY VENDORS
Rig-Up Equipment	11/02/2011 09:34							1 HT-400 PUMP TRUCK, 2 660 BULK TRUCKS, 1 F-450 P/U, 1 F-350 P/U .
Start Job	11/02/2011 10:40							2 3/8 TUBING SET AT 4900', RETAINER SET AT 4900', PERFS AT 5012', 4 1/2" FC. AT 5300'
Pump Water	11/02/2011 10:40		1	1			700.0	FILL LINES PRIOR TO PRESSURE TESTING LINES
Pressure Test	11/02/2011 10:41		0.5	0.5		6000.0		HES HAD PROBLEMS HOLDING PRESSURE TEST DUE TO VALVE ON TRUCK, VALVE REPLACED PRESSURE TEST HELD NO LEAKS
Activity Description	Date/Time	Cht #	Rate bbl/min	Volume bbl		Pressure psig		Comments
				Stage	Total	Tubing	Casing	



Injection Test	11/02/2011 10:46		1	6.6			1300. 0	FRESH WATER. HES MIXED UP A TUB OF CMT PER CO. REP. 6 BBLS INTO INJECTION TEST THERE WERE RETURNS THROUGH THE BRAIDEN HEAD HES SHUTDOWN PUMPED 9 BBLS OF CEMENT TO HALF ROUND TANK. 350 SKS OF CMT WAS ORDER FOR RE CEMENT AT 11:05. HES WAITED ON LOCATION
Start Job	11/02/2011 15:24							START RE CEMENT JOB. BULK TRUCK ARRIVED ON LOCATION AT 15:45
Pump Water	11/02/2011 15:25		1	1			630.0	FILL LINES PRIOR TO PRESSURE TEST
Pressure Test	11/02/2011 15:27		0.5			5896. 0		NO LEAKS
Injection Test	11/02/2011 15:32		3	15			1880. 0	FRESH WATER. HES PUMPED 4 BBLS AT 1 BPM 1230 PSI, 10 BBLS AT 2 BPM 1630 PSI, 1 BBL AT 3 BPM 1880 PSI PER CO. REP.
ISIP	11/02/2011 15:43						1330. 0	HELD PSI TILL BULK TRUCK ARRIVED
Pump Cement	11/02/2011 16:03		1.5	81			640.0	350 SKS OF HALCEM CMT MIXED AT 13.5 PPG, 1.41 YIELD, 3.76 GAL/SK. CMT TO WEIGHED VIA PRESSURE BALANCED MUD SCALES. WET AND DRY SAMPLES SUBMITTED.
Pump Tail Cement	11/02/2011 16:55		1.5	23.7			410.0	145 SKS OF SQUEEZECM CMT MIXED AT 17.0 PPG TO 18.0 PPG PER CO REP. 52 SKS WERE MIXED UP AND PUMPED TO HALF ROUND TANK ON INTIAL JOB.
Activity Description	Date/Time	Cht #	Rate bbl/ min	Volume bbl		Pressure psig		Comments
				Stage	Total	Tubing	Casing	

## Cementing Job Log

Pump Displacement	11/02/2011 17:08		1.5	19			1138. 0	FRESH WATER. RIG SHUT BRAIDEN HEAD DURING DISPLACEMENT. STEADY INCREASE IN PSI THOUGHOUT DISP. HESITATED TWICE PUMPING .5 BBL EACH TIME.
Shutdown	11/02/2011 17:40							SHUTDOWN. RIG TO STING OUT OF RETAINER
Release Tubing Pressure	11/02/2011 17:41							HES RELEASED TUBING PRESSURE TO HALF ROUND TANK TURNED OVER TO RIG TO REVERSE OUT
Reverse Circ Well	11/02/2011 17:42							RIG REVERSED OUT GETTING 1 BBL OF CEMENT BACK. HES SUPPLIED SUGAR AT HALF ROUND TANK.
End Job	11/02/2011 17:43							
Pre-Rig Down Safety Meeting	11/02/2011 18:10							ALL HES EMPLOYEES
Rig-Down Equipment	11/02/2011 18:30							THANK YOU FOR USING HES FROM TROY ANGLESTEIN AND CREW
Pre-Convoy Safety Meeting	11/02/2011 19:15							ALL HES EMPLOYEES
Crew Leave Location	11/02/2011 20:00							LOCATION CLEAN



# HALLIBURTON

## Water Analysis Report

Company: WILLIAMS  
Submitted by: TROY ANGLESTEIN  
Attention: \_\_\_\_\_  
Lease SG  
Well # 531-27

Date: 11/2/2011  
Date Rec.: \_\_\_\_\_  
S.O.# 8493095  
Job Type: SQUEEZE

Specific Gravity	<i>MAX</i>	<b>1</b>
pH	<i>8</i>	<b>0</b>
Potassium (K)	<i>5000</i>	<b>220 Mg / L</b>
Hrdness	<i>500</i>	<b>0 Mg / L</b>
Iron (FE2)	<i>300</i>	<b>200 Mg / L</b>
Chlorides (Cl)	<i>3000</i>	<b>0 Mg / L</b>
Sulfates (SO <sub>4</sub> )	<i>1500</i>	<b>&lt;200 Mg / L</b>
Temp	<i>40-80</i>	<b>60 Deg</b>
Total Dissolved Solids		<b>380 Mg / L</b>

Respectfully: TROY ANGLESTEIN

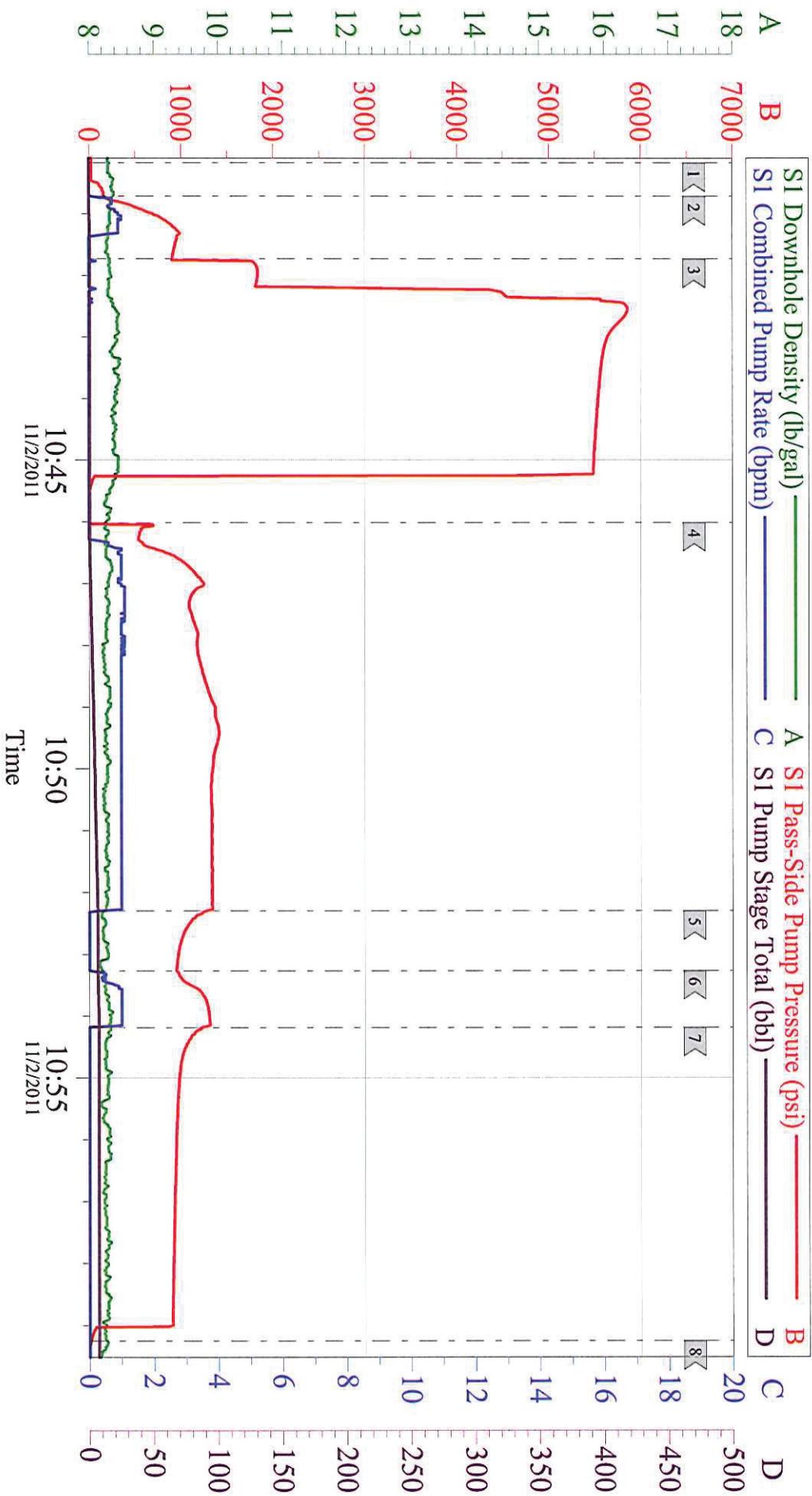
Title: CEMENTING SUPERVISOR

Location: Grand Junction, CO

**NOTICE:**

This report is limited to the described sample tested. Any person using or relying on this report agrees that Halliburton shall not be liable for any loss or damage whether due to act or omission resulting from such report.

# WILLIAMS SG 531-27 SQUEEZE



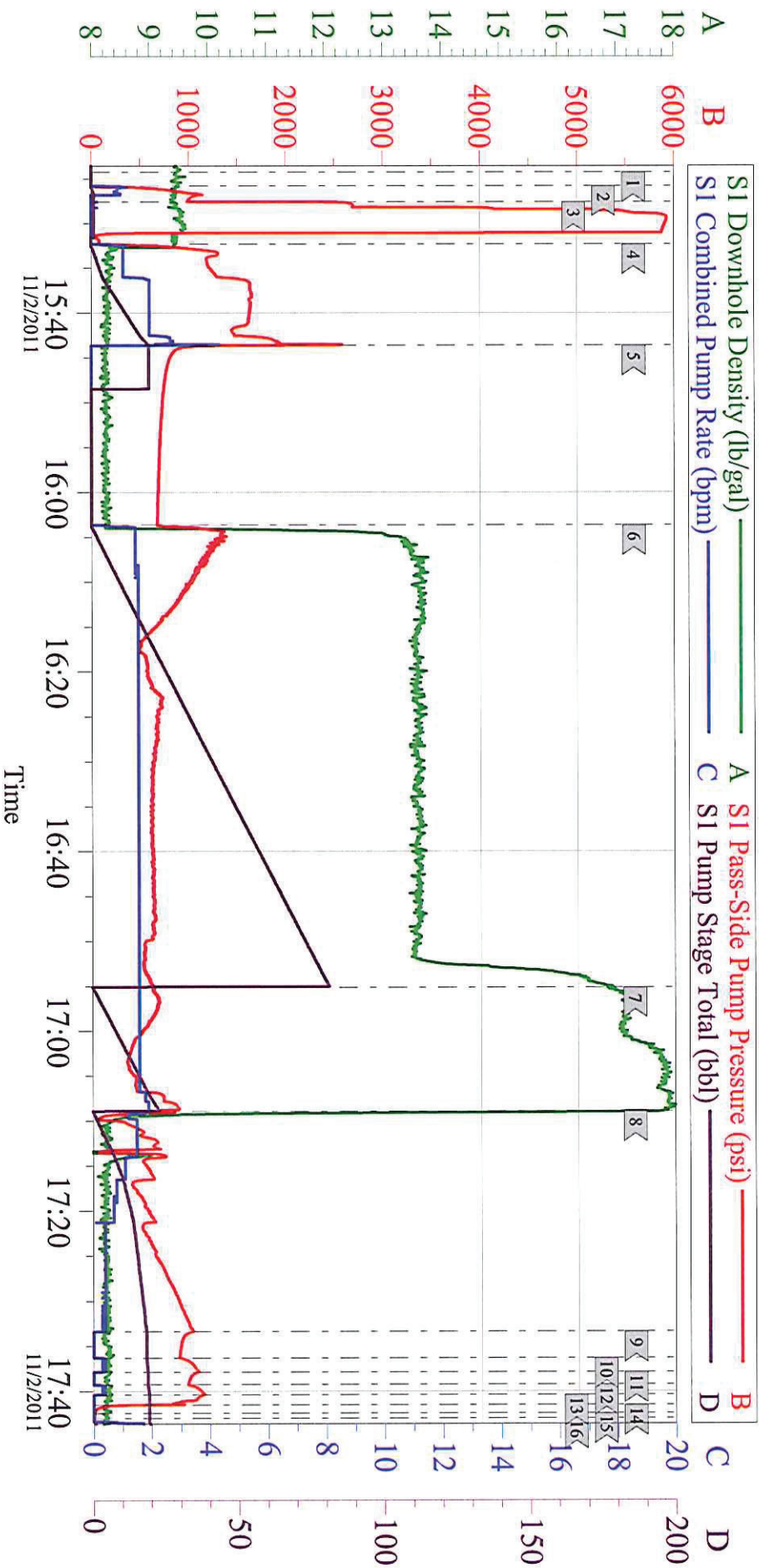
Customer: WILLIAMS  
Well Description: SG 531-27  
Company Rep: MIKE SNOW

Job Date: 02-Nov-2011  
Job Type: SQUEEZE  
Cement Supervisor: TROY ANGLESTEIN

Sales Order #: 8493095  
ADC Used: YES  
Elite #: 1 MARK PHILLIPS



# WILLIAMS SG 531-27 RECEMENT



Local Event Log

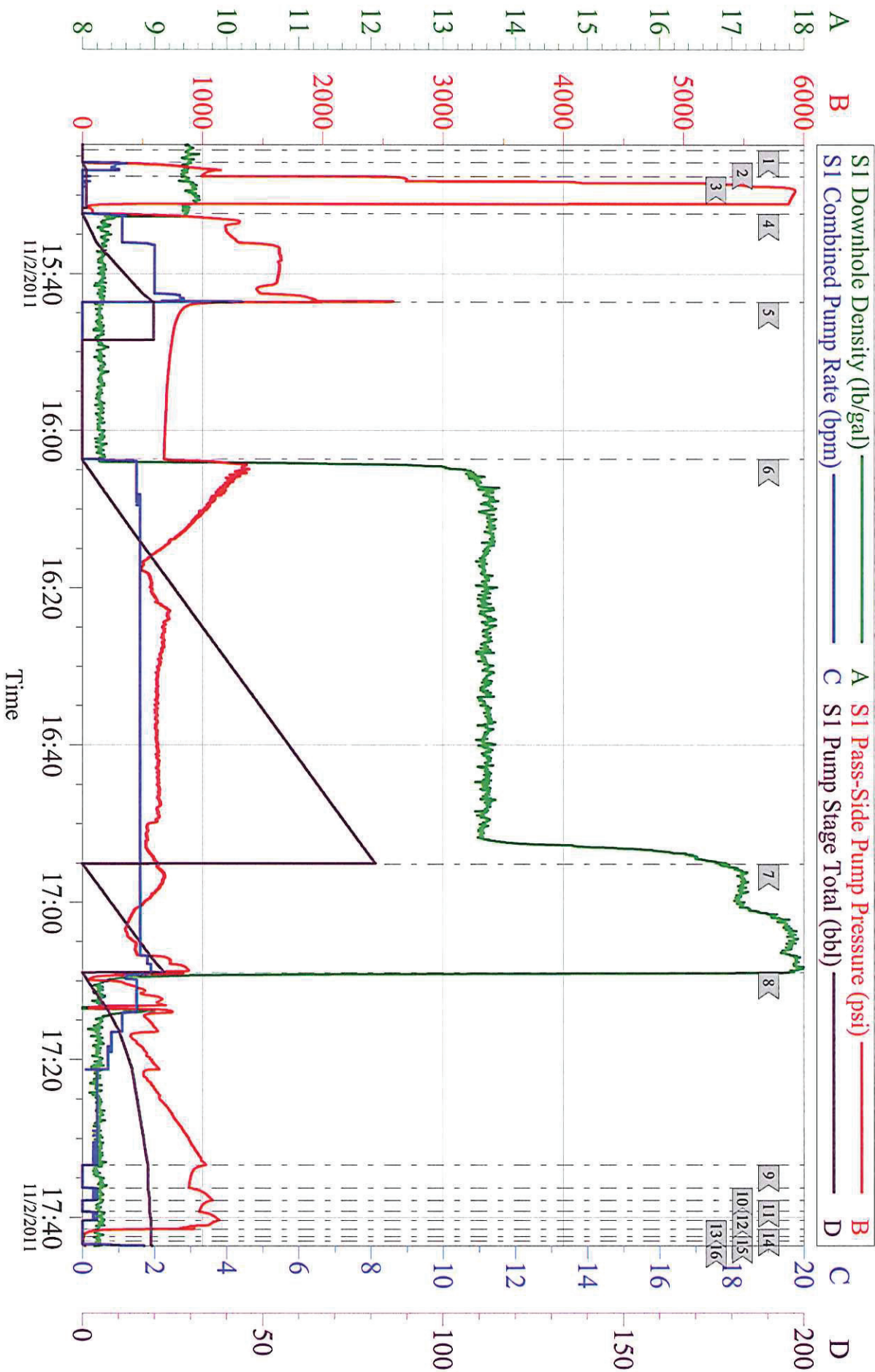
1 < START JOB	15:24:15	2 < FILL LINES	15:25:48	3 < TEST LINES	15:27:34
4 < INJECTION TEST	15:32:18	5 < ISIP	15:43:36	6 < PUMP LEAD	16:03:38
7 < PUMP TAIL	16:55:06	8 < PUMP DISPLACEMENT	17:08:54	9 < HESITATE 1	17:33:23
10 < RESUME	17:36:19	11 < HESITATE 2	17:37:53	12 < RESUME	17:39:15
13 < SHUT DOWN/ STING OUT	17:40:25	14 < RELEASE PSI	17:41:32	15 < RIG REVERSE OUT	17:42:26
16 < END JOB	17:43:00				

Customer: WILLIAMS  
Well Description: SG 531-27  
Company Rep: MIKE SNOW

Job Date: 02-Nov-2011  
Job Type: SQUEEZE/RECEMENT  
Cement Supervisor: TROY ANGLESTEIN

Sales Order #: 8493095  
ADC Used: YES  
Elite #: 1 MARK PHILLIPS

# WILLIAMS SG 531-27 RECEMENT



Customer: WILLIAMS  
Well Description: SG 531-27  
Company Rep: MIKE SNOW

Job Date: 02-Nov-2011  
Job Type: SQUEEZE/RECEMENT  
Cement Supervisor: TROY ANGLESTEIN

Sales Order #: 8493095  
ADC Used: YES  
Elite #: 1 MARK PHILLIPS