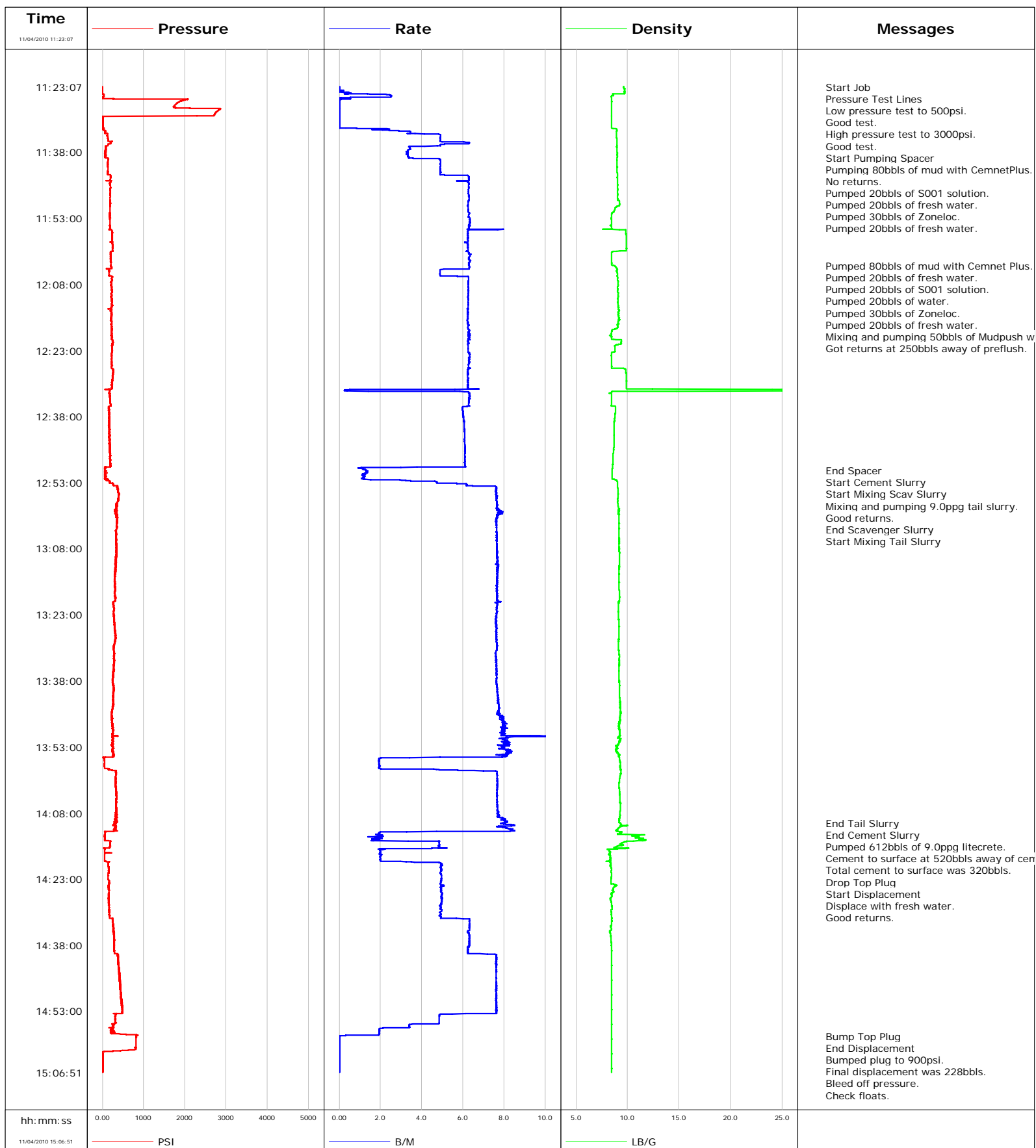


Well SGU 8503D-36 B36 496
Field STORY GULCH
Engineer JEFF PATTERSON
Country United States

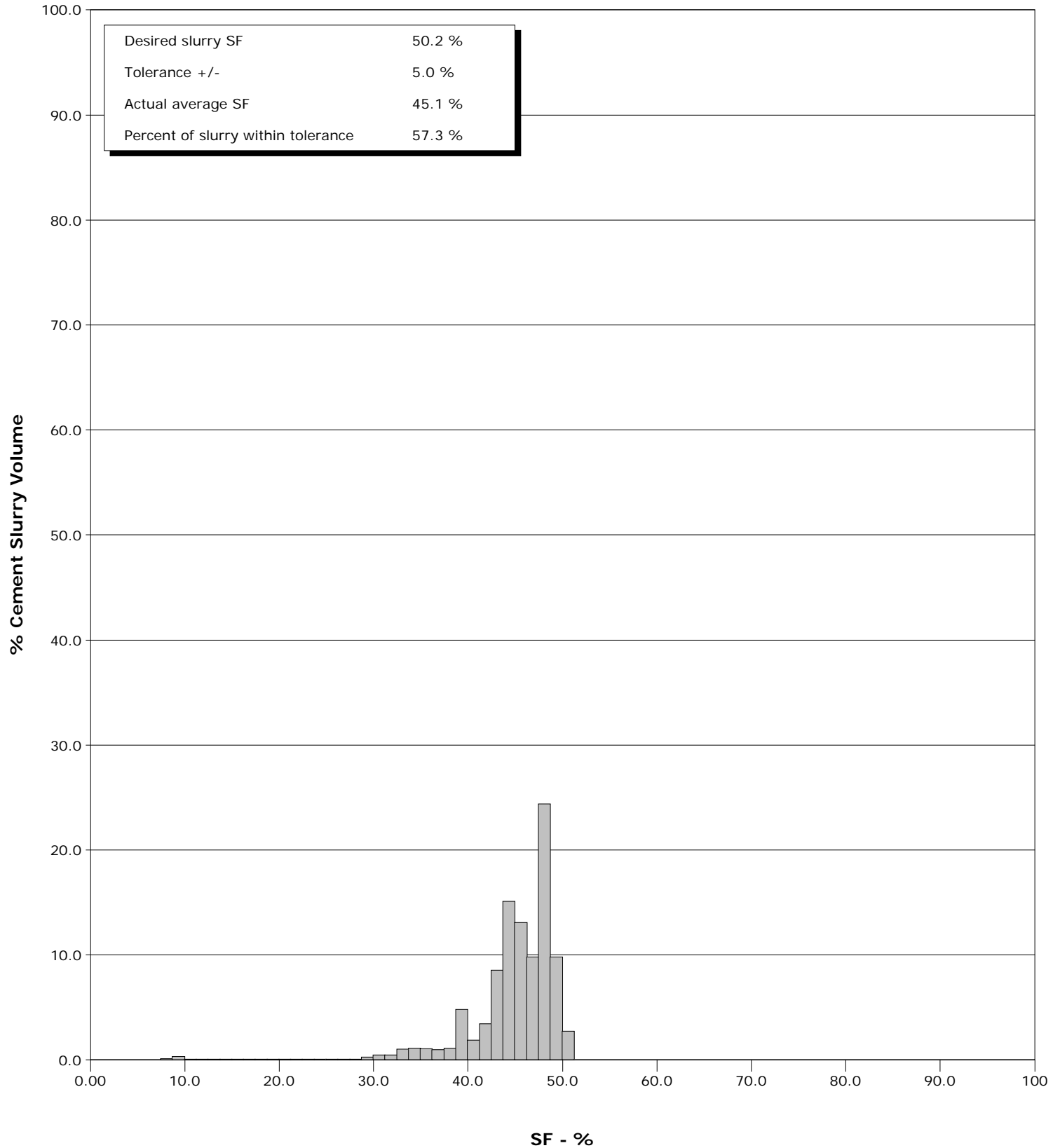
Client ENCANA
SIR No. B708-00184
Job Type 9 5/8" SURFACE
Job Date 11-04-2010



Well SGU 8503D-36 B36 496
Field STORY GULCH
Engineer JEFF PATTERSON
Country United States

Client ENCANA
SIR No. B708-00184
Job Type 9 5/8" SURFACE
Job Date 11-04-2010

Cement Slurry - 11/04/2010 12:50:12 to 11/04/2010 14:10:19



Well			Field		Job Start		Customer		Job Number	
SGU 8503D-36 B36 496 SGU 8503D-36 B36 496			STORY GULCH		Nov/04/2010		ENCANA		B708-00184	
Date	Time 24-hr clock	Treating Pressure PSI	Flow Rate B/M	Density LB/G	Volume BBL	Message				
11/04/2010	11:23:21	-7	0.0	9.61	0.0					
11/04/2010	11:23:32	-7	0.0	9.69	0.0					
11/04/2010	11:24:02	-7	0.2	9.76	0.0					
11/04/2010	11:24:32	-7	0.4	9.69	0.1					
11/04/2010	11:25:02	35	2.5	8.65	0.8					
11/04/2010	11:25:32	0	1.7	8.44	2.0					
11/04/2010	11:26:02	2052	0.0	8.46	2.1					
11/04/2010	11:26:32	1866	0.0	8.46	2.1					
11/04/2010	11:27:02	1790	0.0	8.46	2.1					
11/04/2010	11:27:32	1736	0.0	8.46	2.1					
11/04/2010	11:28:02	2118	0.0	8.45	2.1					
11/04/2010	11:28:32	2808	0.0	8.45	2.1					
11/04/2010	11:29:02	2745	0.0	8.45	2.1					
11/04/2010	11:29:32	2714	0.0	8.46	2.1					
11/04/2010	11:30:02	4	0.0	8.46	2.1					
11/04/2010	11:30:32	5	0.0	8.46	2.1					
11/04/2010	11:31:02	5	0.0	8.46	2.1					
11/04/2010	11:31:32	5	0.0	8.46	2.1					
11/04/2010	11:32:02	5	0.0	8.46	2.1					
11/04/2010	11:32:32	1	0.3	8.46	2.1					
11/04/2010	11:33:02	44	2.4	8.97	3.1					
11/04/2010	11:33:32	70	3.5	8.93	4.7					
11/04/2010	11:34:02	130	4.9	8.93	6.7					
11/04/2010	11:34:32	127	4.9	8.94	9.1					
11/04/2010	11:35:02	137	4.9	8.96	11.6					
11/04/2010	11:35:32	143	4.9	8.98	14.0					
11/04/2010	11:36:02	206	6.3	8.98	17.0					
11/04/2010	11:36:32	141	4.9	8.98	19.6					
11/04/2010	11:37:02	85	3.4	8.96	21.4					
11/04/2010	11:37:32	83	3.3	8.98	23.1					
11/04/2010	11:38:02	75	3.3	8.98	24.8					
11/04/2010	11:38:32	63	3.3	9.00	26.4					
11/04/2010	11:39:02	82	3.3	9.00	28.1					
11/04/2010	11:39:32	133	4.9	8.98	29.9					
11/04/2010	11:40:02	138	4.9	8.98	32.4					
11/04/2010	11:40:32	133	4.9	9.00	34.8					
11/04/2010	11:41:02	129	4.9	8.99	37.3					
11/04/2010	11:41:32	138	4.9	9.00	39.7					
11/04/2010	11:42:02	137	4.9	8.99	42.2					
11/04/2010	11:42:32	130	4.9	8.99	44.6					
11/04/2010	11:43:02	129	4.9	9.02	47.1					
11/04/2010	11:43:32	198	6.3	9.01	50.0					
11/04/2010	11:44:02	197	6.3	9.01	53.1					
11/04/2010	11:44:32	197	5.7	9.04	56.3					
11/04/2010	11:45:02	187	6.3	9.04	59.4					
11/04/2010	11:45:32	193	6.3	9.04	62.5					
11/04/2010	11:46:02	206	6.3	9.01	65.6					
11/04/2010	11:46:32	192	6.3	9.05	68.8					
11/04/2010	11:47:02	199	6.3	9.04	71.9					
11/04/2010	11:47:32	191	6.3	9.05	75.1					
11/04/2010	11:48:02	197	6.3	9.03	78.2					
11/04/2010	11:48:32	189	6.3	9.04	81.3					
11/04/2010	11:49:02	186	6.3	9.20	84.5					
11/04/2010	11:49:32	187	6.3	9.20	87.6					

Well			Field		Job Start		Customer		Job Number	
SGU 8503D-36 B36 496 SGU 8503D-36 B36 496			STORY GULCH		Nov/04/2010		ENCANA		B708-00184	
Date	Time 24-hr clock	Treating Pressure PSI	Flow Rate B/M	Density LB/G	Volume BBL	Message				
11/04/2010	11:50:32	185	6.3	8.84	93.9					
11/04/2010	11:51:02	185	6.3	8.77	97.0					
11/04/2010	11:51:32	180	6.3	8.68	100.1					
11/04/2010	11:52:02	178	6.3	8.47	103.3					
11/04/2010	11:52:32	179	6.3	8.46	106.4					
11/04/2010	11:53:02	183	6.3	8.42	109.5					
11/04/2010	11:53:32	183	6.3	8.44	112.7					
11/04/2010	11:54:02	182	6.3	8.44	115.9					
11/04/2010	11:54:32	183	6.3	8.45	119.0					
11/04/2010	11:55:02	189	6.3	8.45	122.2					
11/04/2010	11:55:32	169	8.0	7.60	125.4					
11/04/2010	11:56:02	236	6.2	9.85	128.6					
11/04/2010	11:56:32	242	6.2	9.86	131.7					
11/04/2010	11:57:02	236	6.3	9.86	134.8					
11/04/2010	11:57:32	239	6.2	9.86	137.9					
11/04/2010	11:58:02	242	6.3	9.87	141.0					
11/04/2010	11:58:32	243	6.2	9.87	144.1					
11/04/2010	11:59:02	247	6.2	9.87	147.3					
11/04/2010	11:59:32	240	6.2	9.87	150.4					
11/04/2010	12:00:02	244	6.2	9.87	153.5					
11/04/2010	12:00:32	229	6.2	8.62	156.6					
11/04/2010	12:01:02	196	6.3	8.45	159.8					
11/04/2010	12:01:32	200	6.3	8.44	162.9					
11/04/2010	12:02:02	203	6.3	8.45	166.1					
11/04/2010	12:02:32	203	6.3	8.45	169.2					
11/04/2010	12:03:02	207	6.3	8.45	172.4					
11/04/2010	12:03:32	207	6.3	8.45	175.5					
11/04/2010	12:03:44					Pumped 80bbls of mud with Cemnet Plus.				
11/04/2010	12:03:44					Pumped 20bbls of fresh water.				
11/04/2010	12:03:44	194	6.3	8.71	176.8					
11/04/2010	12:03:45					Pumped 20bbls of S001 solution.				
11/04/2010	12:03:45					Pumped 20bbls of water.				
11/04/2010	12:03:45					Pumped 30bbls of Zoneloc.				
11/04/2010	12:03:45					Pumped 20bbls of fresh water.				
11/04/2010	12:03:45	204	6.3	8.71	176.9					
11/04/2010	12:03:46					Mixing and pumping 50bbls of Mudpush with CemnetPlus at 8.6ppg.				
11/04/2010	12:03:46	204	6.3	8.75	177.0					
11/04/2010	12:03:47					Got returns at 250bbls away of preflush.				
11/04/2010	12:03:47	214	6.3	8.77	177.1					
11/04/2010	12:04:02	207	6.3	8.84	178.7					
11/04/2010	12:04:32	167	5.7	9.01	181.8					
11/04/2010	12:05:02	169	4.9	8.95	184.3					
11/04/2010	12:05:32	159	4.9	9.01	186.7					
11/04/2010	12:06:02	171	4.9	9.00	189.2					
11/04/2010	12:06:32	228	6.3	9.04	192.2					
11/04/2010	12:07:02	242	6.3	9.04	195.3					
11/04/2010	12:07:32	215	6.3	9.09	198.4					
11/04/2010	12:08:02	223	6.3	9.08	201.6					
11/04/2010	12:08:32	228	6.3	9.04	204.7					
11/04/2010	12:09:02	227	6.3	9.05	207.8					
11/04/2010	12:09:32	237	6.3	9.04	211.0					
11/04/2010	12:10:02	218	6.3	9.11	214.1					
11/04/2010	12:10:32	236	6.3	9.08	217.2					

Well			Field		Job Start		Customer		Job Number	
SGU 8503D-36 B36 496 SGU 8503D-36 B36 496			STORY GULCH		Nov/04/2010		ENCANA		B708-00184	
Date	Time 24-hr clock	Treating Pressure PSI	Flow Rate B/M	Density LB/G	Volume BBL	Message				
11/04/2010	12:11:32	220	6.3	9.07	223.5					
11/04/2010	12:12:02	239	6.3	9.05	226.6					
11/04/2010	12:12:32	224	6.3	9.07	229.7					
11/04/2010	12:13:02	229	6.3	9.09	232.9					
11/04/2010	12:13:32	221	6.2	9.13	236.0					
11/04/2010	12:14:02	204	6.2	9.17	239.1					
11/04/2010	12:14:32	220	6.3	9.13	242.2					
11/04/2010	12:15:02	231	6.2	9.13	245.4					
11/04/2010	12:15:32	221	6.2	9.19	248.5					
11/04/2010	12:16:02	208	6.2	9.25	251.6					
11/04/2010	12:16:32	233	6.2	9.08	254.7					
11/04/2010	12:17:02	218	6.2	9.08	257.8					
11/04/2010	12:17:32	231	6.2	9.06	260.9					
11/04/2010	12:18:02	221	6.2	8.95	264.1					
11/04/2010	12:18:32	223	6.3	8.48	267.2					
11/04/2010	12:19:02	227	6.3	8.45	270.3					
11/04/2010	12:19:32	227	6.3	8.43	273.5					
11/04/2010	12:20:02	229	6.3	8.46	276.6					
11/04/2010	12:20:32	234	6.3	8.90	279.8					
11/04/2010	12:21:02	250	6.2	9.38	282.9					
11/04/2010	12:21:32	249	6.2	9.35	286.0					
11/04/2010	12:22:02	239	6.3	8.78	289.1					
11/04/2010	12:22:32	231	6.3	8.80	292.3					
11/04/2010	12:23:02	233	6.2	8.79	295.4					
11/04/2010	12:23:32	228	6.3	8.45	298.5					
11/04/2010	12:24:02	233	6.3	8.44	301.7					
11/04/2010	12:24:32	231	6.3	8.45	304.9					
11/04/2010	12:25:02	236	6.3	8.45	308.0					
11/04/2010	12:25:32	230	6.3	8.45	311.2					
11/04/2010	12:26:02	226	6.3	8.45	314.3					
11/04/2010	12:26:32	229	6.3	8.45	317.4					
11/04/2010	12:27:02	221	6.4	8.96	320.6					
11/04/2010	12:27:32	259	6.2	9.83	323.7					
11/04/2010	12:28:02	263	6.2	9.86	326.8					
11/04/2010	12:28:32	261	6.2	9.86	329.9					
11/04/2010	12:29:02	250	6.2	9.86	333.1					
11/04/2010	12:29:32	241	6.2	9.87	336.2					
11/04/2010	12:30:02	243	6.2	9.87	339.3					
11/04/2010	12:30:32	239	6.3	9.87	342.4					
11/04/2010	12:31:02	243	6.2	9.87	345.5					
11/04/2010	12:31:32	230	6.2	9.87	348.7					
11/04/2010	12:32:02	186	0.3	25.00	350.6					
11/04/2010	12:32:32	174	6.3	8.45	352.3					
11/04/2010	12:33:02	170	6.3	8.44	355.5					
11/04/2010	12:33:32	178	6.3	8.45	358.6					
11/04/2010	12:34:02	185	6.3	8.45	361.8					
11/04/2010	12:34:32	191	6.3	8.45	364.9					
11/04/2010	12:35:02	197	6.3	8.45	368.1					
11/04/2010	12:35:32	203	6.3	8.41	371.2					
11/04/2010	12:36:02	154	6.0	8.85	374.2					
11/04/2010	12:36:32	155	6.0	8.85	377.2					
11/04/2010	12:37:02	155	6.0	8.82	380.2					
11/04/2010	12:37:32	162	6.0	8.80	383.2					
11/04/2010	12:38:02	159	6.0	8.78	386.2					

Well			Field		Job Start		Customer		Job Number	
SGU 8503D-36 B36 496 SGU 8503D-36 B36 496			STORY GULCH		Nov/04/2010		ENCANA		B708-00184	
Date	Time 24-hr clock	Treating Pressure PSI	Flow Rate B/M	Density LB/G	Volume BBL	Message				
11/04/2010	12:39:02	164	6.1	8.73	392.3					
11/04/2010	12:39:32	169	6.1	8.70	395.3					
11/04/2010	12:40:02	171	6.1	8.68	398.3					
11/04/2010	12:40:32	166	6.1	8.67	401.3					
11/04/2010	12:41:02	178	6.1	8.68	404.4					
11/04/2010	12:41:32	171	6.1	8.70	407.4					
11/04/2010	12:42:02	173	6.1	8.70	410.5					
11/04/2010	12:42:32	162	6.1	8.70	413.5					
11/04/2010	12:43:02	180	6.1	8.69	416.6					
11/04/2010	12:43:32	175	6.1	8.68	419.6					
11/04/2010	12:44:02	180	6.1	8.68	422.6					
11/04/2010	12:44:32	175	6.1	8.70	425.7					
11/04/2010	12:45:02	187	6.1	8.67	428.7					
11/04/2010	12:45:32	180	6.1	8.65	431.8					
11/04/2010	12:46:02	183	6.1	8.63	434.8					
11/04/2010	12:46:32	189	6.1	8.61	437.9					
11/04/2010	12:47:02	185	6.1	8.60	440.9					
11/04/2010	12:47:32	185	6.1	8.60	444.0					
11/04/2010	12:48:02	200	6.1	8.60	447.0					
11/04/2010	12:48:32	187	6.1	8.60	450.1					
11/04/2010	12:49:02	189	6.1	8.57	453.1					
11/04/2010	12:49:32	54	3.0	8.54	456.0					
11/04/2010	12:50:02	54	1.2	8.52	456.6					
11/04/2010	12:50:11					End Spacer				
11/04/2010	12:50:11	67	1.3	8.52	456.8					
11/04/2010	12:50:12					Start Cement Slurry				
11/04/2010	12:50:12	54	1.3	8.52	456.8					
11/04/2010	12:50:13					Start Mixing Scav Slurry				
11/04/2010	12:50:13	54	1.3	8.52	456.8					
11/04/2010	12:50:15					Mixing and pumping 9.0ppg tail slurry.				
11/04/2010	12:50:15					Good returns.				
11/04/2010	12:50:15	57	1.3	8.52	456.9					
11/04/2010	12:50:32	58	1.4	8.52	457.3					
11/04/2010	12:51:02	58	1.2	8.51	457.9					
11/04/2010	12:51:32	66	1.3	8.50	458.5					
11/04/2010	12:52:02	55	1.2	8.50	459.1					
11/04/2010	12:52:32	111	3.2	8.96	460.1					
11/04/2010	12:53:02	188	4.7	9.00	462.2					
11/04/2010	12:53:32	259	6.2	9.02	465.1					
11/04/2010	12:54:02	369	7.6	9.04	468.6					
11/04/2010	12:54:32	384	7.6	9.06	472.4					
11/04/2010	12:55:02	384	7.6	9.08	476.2					
11/04/2010	12:55:32	395	7.6	9.07	480.0					
11/04/2010	12:56:02	398	7.6	9.06	483.8					
11/04/2010	12:56:32	388	7.6	9.05	487.6					
11/04/2010	12:57:02	380	7.6	9.06	491.5					
11/04/2010	12:57:32	350	7.6	9.04	495.3					
11/04/2010	12:58:02	337	7.7	9.08	499.1					
11/04/2010	12:58:32	349	7.6	9.11	502.9					
11/04/2010	12:59:02	321	7.7	9.16	506.7					
11/04/2010	12:59:32	296	7.8	9.15	510.6					
11/04/2010	13:00:02	337	7.9	9.12	514.5					
11/04/2010	13:00:32					End Scavenger Slurry				
11/04/2010	13:00:32	340	7.7	9.17	518.4					

Well			Field		Job Start		Customer		Job Number	
SGU 8503D-36 B36 496 SGU 8503D-36 B36 496			STORY GULCH		Nov/04/2010		ENCANA		B708-00184	
Date	Time 24-hr clock	Treating Pressure PSI	Flow Rate B/M	Density LB/G	Volume BBL	Message				
11/04/2010	13:00:34	346	7.7	9.17	518.6					
11/04/2010	13:01:02	361	7.6	9.19	522.2					
11/04/2010	13:01:32	361	7.6	9.18	526.0					
11/04/2010	13:02:02	360	7.6	9.19	529.8					
11/04/2010	13:02:32	354	7.6	9.18	533.6					
11/04/2010	13:03:02	357	7.6	9.19	537.4					
11/04/2010	13:03:32	354	7.6	9.17	541.3					
11/04/2010	13:04:02	336	7.6	9.17	545.1					
11/04/2010	13:04:32	342	7.6	9.19	548.9					
11/04/2010	13:05:02	338	7.6	9.18	552.7					
11/04/2010	13:05:32	344	7.6	9.18	556.5					
11/04/2010	13:06:02	345	7.6	9.19	560.3					
11/04/2010	13:06:32	341	7.6	9.19	564.2					
11/04/2010	13:07:02	346	7.6	9.18	568.0					
11/04/2010	13:07:32	341	7.6	9.19	571.8					
11/04/2010	13:08:02	344	7.7	9.19	575.6					
11/04/2010	13:08:32	342	7.6	9.20	579.4					
11/04/2010	13:09:02	346	7.7	9.19	583.3					
11/04/2010	13:09:32	356	7.6	9.20	587.1					
11/04/2010	13:10:02	335	7.6	9.20	590.9					
11/04/2010	13:10:32	328	7.6	9.20	594.8					
11/04/2010	13:11:02	338	7.6	9.21	598.6					
11/04/2010	13:11:32	333	7.6	9.19	602.4					
11/04/2010	13:12:02	317	7.7	9.19	606.3					
11/04/2010	13:12:32	318	7.7	9.17	610.1					
11/04/2010	13:13:02	325	7.7	9.18	613.9					
11/04/2010	13:13:32	307	7.7	9.17	617.8					
11/04/2010	13:14:02	301	7.7	9.18	621.6					
11/04/2010	13:14:32	308	7.6	9.18	625.4					
11/04/2010	13:15:02	299	7.6	9.18	629.3					
11/04/2010	13:15:32	304	7.7	9.17	633.1					
11/04/2010	13:16:02	307	7.7	9.18	636.9					
11/04/2010	13:16:32	310	7.7	9.17	640.7					
11/04/2010	13:17:02	302	7.7	9.18	644.6					
11/04/2010	13:17:32	301	7.6	9.20	648.4					
11/04/2010	13:18:02	297	7.6	9.21	652.2					
11/04/2010	13:18:32	306	7.6	9.22	656.0					
11/04/2010	13:19:02	307	7.7	9.22	659.9					
11/04/2010	13:19:32	317	7.7	9.21	663.7					
11/04/2010	13:20:02	277	7.8	9.15	667.5					
11/04/2010	13:20:32	258	7.7	9.11	671.4					
11/04/2010	13:21:02	274	7.6	9.13	675.2					
11/04/2010	13:21:32	274	7.6	9.14	679.0					
11/04/2010	13:22:02	275	7.6	9.13	682.8					
11/04/2010	13:22:32	268	7.6	9.12	686.7					
11/04/2010	13:23:02	273	7.6	9.13	690.5					
11/04/2010	13:23:32	284	7.6	9.14	694.3					
11/04/2010	13:24:02	285	7.6	9.14	698.1					
11/04/2010	13:24:32	295	7.6	9.15	701.9					
11/04/2010	13:25:02	292	7.6	9.16	705.7					
11/04/2010	13:25:32	292	7.6	9.16	709.5					
11/04/2010	13:26:02	300	7.6	9.16	713.3					
11/04/2010	13:26:32	302	7.6	9.16	717.1					
11/04/2010	13:27:02	303	7.6	9.15	720.9					

Well			Field		Job Start		Customer		Job Number	
SGU 8503D-36 B36 496 SGU 8503D-36 B36 496			STORY GULCH		Nov/04/2010		ENCANA		B708-00184	
Date	Time 24-hr clock	Treating Pressure PSI	Flow Rate B/M	Density LB/G	Volume BBL	Message				
11/04/2010	13:28:02	315	7.6	9.16	728.5					
11/04/2010	13:28:32	312	7.6	9.14	732.3					
11/04/2010	13:29:02	311	7.6	9.13	736.1					
11/04/2010	13:29:32	296	7.6	9.12	740.0					
11/04/2010	13:30:02	280	7.7	9.11	743.8					
11/04/2010	13:30:32	272	7.7	9.12	747.6					
11/04/2010	13:31:02	277	7.6	9.14	751.4					
11/04/2010	13:31:32	278	7.6	9.16	755.2					
11/04/2010	13:32:02	285	7.6	9.19	759.0					
11/04/2010	13:32:32	289	7.6	9.19	762.8					
11/04/2010	13:33:02	295	7.6	9.19	766.6					
11/04/2010	13:33:32	287	7.6	9.19	770.4					
11/04/2010	13:34:02	284	7.6	9.19	774.2					
11/04/2010	13:34:32	280	7.6	9.19	778.1					
11/04/2010	13:35:02	268	7.6	9.19	781.9					
11/04/2010	13:36:02	257	7.6	9.18	789.5					
11/04/2010	13:36:32	263	7.6	9.18	793.3					
11/04/2010	13:37:02	262	7.6	9.18	797.1					
11/04/2010	13:37:32	248	7.6	9.19	800.9					
11/04/2010	13:38:02	254	7.6	9.19	804.7					
11/04/2010	13:38:32	256	7.6	9.20	808.6					
11/04/2010	13:39:02	274	7.6	9.20	812.4					
11/04/2010	13:39:32	281	7.6	9.21	816.2					
11/04/2010	13:40:02	273	7.7	9.21	820.0					
11/04/2010	13:40:32	271	7.7	9.23	823.8					
11/04/2010	13:41:02	273	7.7	9.23	827.7					
11/04/2010	13:41:32	266	7.7	9.23	831.5					
11/04/2010	13:42:02	256	7.7	9.25	835.4					
11/04/2010	13:42:32	265	7.7	9.29	839.2					
11/04/2010	13:43:02	268	7.7	9.29	843.1					
11/04/2010	13:43:32	262	7.7	9.28	846.9					
11/04/2010	13:44:02	251	7.7	9.30	850.8					
11/04/2010	13:44:32	232	7.8	9.31	854.7					
11/04/2010	13:45:02	237	7.7	9.32	858.6					
11/04/2010	13:45:32	219	7.7	9.31	862.4					
11/04/2010	13:46:02	219	7.9	9.28	866.3					
11/04/2010	13:46:32	214	8.0	9.26	870.2					
11/04/2010	13:47:02	229	8.0	9.26	874.2					
11/04/2010	13:47:32	229	7.9	9.24	878.2					
11/04/2010	13:48:02	238	7.9	9.20	882.2					
11/04/2010	13:48:32	247	7.9	9.24	886.2					
11/04/2010	13:49:02	251	8.0	9.22	890.1					
11/04/2010	13:49:32	248	7.9	9.23	894.1					
11/04/2010	13:50:02	242	8.0	9.22	898.1					
11/04/2010	13:50:32	372	10.1	9.24	902.2					
11/04/2010	13:51:02	272	7.9	9.21	906.5					
11/04/2010	13:51:32	244	8.1	9.27	910.5					
11/04/2010	13:52:02	245	8.1	9.18	914.5					
11/04/2010	13:52:32	253	7.8	9.05	918.6					
11/04/2010	13:53:02	252	7.9	8.95	922.6					
11/04/2010	13:53:32	236	8.1	8.84	926.5					
11/04/2010	13:54:02	267	8.2	8.91	930.6					
11/04/2010	13:54:32	270	8.2	9.09	934.7					
11/04/2010	13:55:02	275	8.0	9.16	938.7					

Well			Field		Job Start		Customer		Job Number	
SGU 8503D-36 B36 496 SGU 8503D-36 B36 496			STORY GULCH		Nov/04/2010		ENCANA		B708-00184	
Date	Time 24-hr clock	Treating Pressure PSI	Flow Rate B/M	Density LB/G	Volume BBL	Message				
11/04/2010	13:56:02	49	1.9	9.25	942.7					
11/04/2010	13:56:32	49	1.9	9.29	943.7					
11/04/2010	13:57:02	48	1.9	9.32	944.7					
11/04/2010	13:57:32	48	1.9	9.30	945.6					
11/04/2010	13:58:02	164	4.3	9.34	946.7					
11/04/2010	13:58:32	330	7.6	9.35	949.6					
11/04/2010	13:59:02	334	7.7	9.34	953.4					
11/04/2010	13:59:32	327	7.7	9.29	957.2					
11/04/2010	14:00:02	330	7.7	9.24	961.1					
11/04/2010	14:00:32	318	7.6	9.20	964.9					
11/04/2010	14:01:02	329	7.7	9.19	968.7					
11/04/2010	14:01:32	324	7.7	9.18	972.6					
11/04/2010	14:02:02	325	7.7	9.18	976.4					
11/04/2010	14:02:32	334	7.7	9.20	980.2					
11/04/2010	14:03:02	343	7.7	9.23	984.1					
11/04/2010	14:03:32	333	7.7	9.23	987.9					
11/04/2010	14:04:02	331	7.6	9.24	991.7					
11/04/2010	14:04:32	351	7.6	9.26	995.5					
11/04/2010	14:05:02	330	7.6	9.26	999.4					
11/04/2010	14:05:32	335	7.7	9.28	1003.2					
11/04/2010	14:06:02	341	7.7	9.29	1007.0					
11/04/2010	14:06:32	330	7.6	9.30	1010.9					
11/04/2010	14:07:02	337	7.7	9.30	1014.7					
11/04/2010	14:07:32	351	7.6	9.30	1018.5					
11/04/2010	14:08:02	347	7.7	9.27	1022.4					
11/04/2010	14:08:32	324	7.7	9.28	1026.2					
11/04/2010	14:09:02	348	7.8	9.24	1030.1					
11/04/2010	14:09:32	335	7.8	9.22	1034.1					
11/04/2010	14:10:02	329	8.1	9.19	1038.1					
11/04/2010	14:10:18					End Tail Slurry				
11/04/2010	14:10:18	332	7.9	9.32	1040.2					
11/04/2010	14:10:19					End Cement Slurry				
11/04/2010	14:10:19	332	7.9	9.33	1040.4					
11/04/2010	14:10:20					Pumped 612bbbls of 9.0ppg litecrete.				
11/04/2010	14:10:20	336	7.9	9.33	1040.5					
11/04/2010	14:10:21					Cement to surface at 520bbbls away of cement.				
11/04/2010	14:10:21					Total cement to surface was 320bbbls.				
11/04/2010	14:10:21	336	7.9	9.33	1040.6					
11/04/2010	14:10:26					Drop Top Plug				
11/04/2010	14:10:26	324	8.0	9.33	1041.3					
11/04/2010	14:10:27					Start Displacement				
11/04/2010	14:10:27	324	8.0	9.35	1041.4					
11/04/2010	14:10:32	274	8.1	9.36	1042.1					
11/04/2010	14:10:46					Displace with fresh water.				
11/04/2010	14:10:46					Good returns.				
11/04/2010	14:10:46	307	8.5	9.30	1044.0					
11/04/2010	14:11:02	313	7.6	9.45	1046.2					
11/04/2010	14:11:32	293	8.2	9.12	1050.2					
11/04/2010	14:12:02	292	8.5	8.88	1054.4					
11/04/2010	14:12:32	68	1.9	9.23	1056.5					
11/04/2010	14:13:02	67	1.9	11.10	1057.4					
11/04/2010	14:13:32	56	2.0	11.16	1058.4					
11/04/2010	14:14:02	59	1.9	11.27	1059.3					
11/04/2010	14:14:32	196	4.8	9.70	1060.7					

Well			Field		Job Start		Customer		Job Number	
SGU 8503D-36 B36 496 SGU 8503D-36 B36 496			STORY GULCH		Nov/04/2010		ENCANA		B708-00184	
Date	Time 24-hr clock	Treating Pressure PSI	Flow Rate B/M	Density LB/G	Volume BBL	Message				
11/04/2010	14:15:32	181	4.8	8.99	1065.6					
11/04/2010	14:16:02	38	4.5	9.79	1068.0					
11/04/2010	14:16:32	52	2.0	8.21	1069.1					
11/04/2010	14:17:02	222	2.0	8.27	1070.1					
11/04/2010	14:17:32	55	2.0	8.29	1071.1					
11/04/2010	14:18:02	56	2.0	8.34	1072.1					
11/04/2010	14:18:32	55	2.0	8.33	1073.1					
11/04/2010	14:19:02	94	3.2	8.27	1074.1					
11/04/2010	14:19:32	139	5.0	8.39	1076.4					
11/04/2010	14:20:02	145	5.0	8.32	1078.9					
11/04/2010	14:20:32	153	4.9	8.43	1081.3					
11/04/2010	14:21:02	154	4.9	8.43	1083.8					
11/04/2010	14:21:32	159	4.9	8.42	1086.3					
11/04/2010	14:22:02	138	4.9	8.44	1088.7					
11/04/2010	14:22:32	142	5.0	8.43	1091.2					
11/04/2010	14:23:02	142	5.0	8.38	1093.7					
11/04/2010	14:23:32	161	4.9	8.39	1096.1					
11/04/2010	14:24:02	163	4.9	8.40	1098.6					
11/04/2010	14:24:32	141	5.1	8.85	1101.1					
11/04/2010	14:25:02	151	4.9	8.65	1103.6					
11/04/2010	14:25:32	159	4.9	8.52	1106.0					
11/04/2010	14:26:02	161	5.0	8.62	1108.5					
11/04/2010	14:26:32	156	5.0	8.44	1111.0					
11/04/2010	14:27:02	158	5.0	8.45	1113.5					
11/04/2010	14:27:32	149	5.0	8.33	1116.0					
11/04/2010	14:28:02	150	5.0	8.42	1118.5					
11/04/2010	14:28:32	154	5.0	8.45	1120.9					
11/04/2010	14:29:02	157	4.9	8.48	1123.4					
11/04/2010	14:29:32	164	4.9	8.48	1125.9					
11/04/2010	14:30:02	167	5.0	8.40	1128.3					
11/04/2010	14:30:32	170	4.9	8.46	1130.8					
11/04/2010	14:31:02	176	4.9	8.43	1133.2					
11/04/2010	14:31:32	176	4.9	8.45	1135.7					
11/04/2010	14:32:02	244	6.3	8.48	1138.3					
11/04/2010	14:33:02	260	6.3	8.46	1144.6					
11/04/2010	14:33:32	255	6.3	8.47	1147.8					
11/04/2010	14:34:02	275	6.3	8.38	1150.9					
11/04/2010	14:34:32	264	6.3	8.44	1154.1					
11/04/2010	14:35:02	258	6.3	8.27	1157.2					
11/04/2010	14:35:32	278	6.3	8.35	1160.3					
11/04/2010	14:36:02	279	6.3	8.37	1163.5					
11/04/2010	14:36:32	291	6.3	8.42	1166.7					
11/04/2010	14:37:02	286	6.3	8.42	1169.8					
11/04/2010	14:37:32	290	6.3	8.44	1173.0					
11/04/2010	14:38:02	282	6.3	8.43	1176.1					
11/04/2010	14:38:32	291	6.2	8.47	1179.3					
11/04/2010	14:39:02	285	6.2	8.47	1182.4					
11/04/2010	14:39:32	291	6.2	8.46	1185.5					
11/04/2010	14:40:02	365	7.4	8.46	1188.7					
11/04/2010	14:40:32	391	7.6	8.46	1192.5					
11/04/2010	14:41:02	376	7.6	8.46	1196.3					
11/04/2010	14:41:32	390	7.6	8.46	1200.1					
11/04/2010	14:42:02	390	7.6	8.46	1203.9					
11/04/2010	14:42:32	385	7.6	8.46	1207.7					

Well			Field		Job Start		Customer		Job Number	
SGU 8503D-36 B36 496 SGU 8503D-36 B36 496			STORY GULCH		Nov/04/2010		ENCANA		B708-00184	
Date	Time 24-hr clock	Treating Pressure PSI	Flow Rate B/M	Density LB/G	Volume BBL	Message				
11/04/2010	14:43:32	392	7.6	8.46	1215.3					
11/04/2010	14:44:02	405	7.6	8.46	1219.1					
11/04/2010	14:44:32	410	7.6	8.46	1222.9					
11/04/2010	14:45:02	410	7.6	8.46	1226.7					
11/04/2010	14:45:32	419	7.6	8.46	1230.5					
11/04/2010	14:46:02	432	7.6	8.46	1234.3					
11/04/2010	14:46:32	437	7.6	8.46	1238.1					
11/04/2010	14:47:02	422	7.6	8.46	1241.9					
11/04/2010	14:47:32	433	7.6	8.46	1245.7					
11/04/2010	14:48:02	427	7.6	8.46	1249.6					
11/04/2010	14:48:32	444	7.6	8.46	1253.4					
11/04/2010	14:49:02	439	7.6	8.46	1257.2					
11/04/2010	14:49:32	452	7.6	8.46	1261.0					
11/04/2010	14:50:02	455	7.6	8.46	1264.8					
11/04/2010	14:50:32	463	7.6	8.46	1268.6					
11/04/2010	14:51:02	456	7.6	8.46	1272.4					
11/04/2010	14:51:32	483	7.6	8.46	1276.2					
11/04/2010	14:52:02	472	7.6	8.46	1280.0					
11/04/2010	14:52:32	477	7.6	8.46	1283.8					
11/04/2010	14:53:02	479	7.6	8.46	1287.6					
11/04/2010	14:53:32	269	7.5	8.46	1291.4					
11/04/2010	14:54:02	312	4.8	8.46	1294.0					
11/04/2010	14:54:32	315	4.8	8.46	1296.4					
11/04/2010	14:55:02	307	4.8	8.46	1298.8					
11/04/2010	14:55:32	307	4.8	8.46	1301.3					
11/04/2010	14:56:02	265	3.4	8.46	1303.4					
11/04/2010	14:56:32	279	3.4	8.46	1305.1					
11/04/2010	14:57:02	215	1.9	8.46	1306.5					
11/04/2010	14:57:32	198	1.9	8.46	1307.5					
11/04/2010	14:58:02	295	1.9	8.46	1308.4					
11/04/2010	14:58:32	823	0.1	8.46	1309.3					
11/04/2010	14:58:39					Bump Top Plug				
11/04/2010	14:58:39	819	0.0	8.46	1309.3					
11/04/2010	14:58:40					End Displacement				
11/04/2010	14:58:40	821	0.0	8.46	1309.3					
11/04/2010	14:58:41					Bumped plug to 900psi.				
11/04/2010	14:58:41					Final displacement was 228bbls.				
11/04/2010	14:58:41					Bleed off pressure.				
11/04/2010	14:58:41					Check floats.				
11/04/2010	14:58:41	823	0.0	8.46	1309.3					
11/04/2010	14:58:42					Floats held.				
11/04/2010	14:58:42					Got 1bbl back.				
11/04/2010	14:58:42					Total cement to surface was 321bbls.				
11/04/2010	14:58:42					Good returns.				
11/04/2010	14:58:42	823	0.0	8.46	1309.3					
11/04/2010	14:59:02	815	0.0	8.46	1309.3					
11/04/2010	14:59:32	814	0.0	8.46	1309.3					
11/04/2010	15:00:02	815	0.0	8.46	1309.3					
11/04/2010	15:00:32	814	0.0	8.46	1309.3					
11/04/2010	15:01:02	814	0.0	8.46	1309.3					
11/04/2010	15:01:32	813	0.0	8.46	1309.3					
11/04/2010	15:02:02	308	0.0	8.46	1309.3					
11/04/2010	15:02:32	0	0.0	8.46	1309.3					
11/04/2010	15:03:02	1	0.0	8.46	1309.3					

Well SGU 8503D-36 B36 496 SGU 8503D-36 B36 496			Field STORY GULCH		Job Start Nov/04/2010		Customer ENCANA		Job Number B708-00184	
Date	Time 24-hr clock	Treating Pressure PSI		Flow Rate B/M	Density LB/G	Volume BBL	Message			
11/04/2010	15:04:02	1		0.0	8.46	1309.3				
11/04/2010	15:04:32	1		0.0	8.46	1309.3				
11/04/2010	15:05:02	1		0.0	8.46	1309.3				
11/04/2010	15:05:32	1		0.0	8.46	1309.3				
11/04/2010	15:06:02	1		0.0	8.46	1309.3				
11/04/2010	15:06:32	1		0.0	8.46	1309.3				
11/04/2010	15:06:48						End Job			
11/04/2010	15:06:48	1		0.0	8.46	1309.3				

Post Job Summary

Average Pump Rates, bbl/min					Volume of Fluid Injected, bbl			
Slurry 6.0	N2	Mud	Maximum Rate 8.0	Total Slurry 559.0	Mud 160.0	Spacer 160.0	N2	
Treating Pressure Summary, psi					Breakdown Fluid			
Maximum 3000	Final 900	Average 300	Bump Plug to 900	Breakdown	Type	Volume	Density	
Avg. N2 Percent		Designed Slurry Volume 559.0 bbl	Displacement 229.0 bbl	Mix Water Temp 50 degF	Cement Circulated to Surface? <input checked="" type="checkbox"/>	Volume 321.0 bbl		
					Washed Thru Perfs <input type="checkbox"/>	To		
Customer or Authorized Representative IRA COX			Schlumberger Supervisor JEFF PATTERSON			Circulation Lost <input type="checkbox"/>	Job Completed <input checked="" type="checkbox"/>	
					-		-	