

HALLIBURTON

WILLIAMS PRODUCTION RMT INC - EBUS

**SG 331-27
GRAND VALLEY
Garfield County , Colorado**

**Cement Surface Casing
08-Oct-2011**

Post Job Report

The Road to Excellence Starts with Safety

Sold To #: 300721	Ship To #: 2881944	Quote #:	Sales Order #: 8512793
Customer: WILLIAMS PRODUCTION RMT INC - EBUS		Customer Rep: OAKS, RICK	
Well Name: SG	Well #: 331-27	API/UWI #:	
Field: GRAND VALLEY	City (SAP): PARACHUTE	County/Parish: Garfield	State: Colorado
Contractor: H&P 278	Rig/Platform Name/Num: H&P 278		
Job Purpose: Cement Surface Casing			
Well Type: Development Well		Job Type: Cement Surface Casing	
Sales Person: KOHL, KYLE		Srvc Supervisor: SMITH, DUSTIN	MBU ID Emp #: 418015

Job Personnel

HES Emp Name	Exp Hrs	Emp #	HES Emp Name	Exp Hrs	Emp #	HES Emp Name	Exp Hrs	Emp #
KUKUS, CRAIG A	30.5	369124	ROMKEE, DALE Alan	30.5	488215	SMITH, DUSTIN Michael	30.5	418015
WYCKOFF, RYAN Scott	30.5	476117						

Equipment

HES Unit #	Distance-1 way	HES Unit #	Distance-1 way	HES Unit #	Distance-1 way	HES Unit #	Distance-1 way
10025118	60 mile	10741259	60 mile	10867094	60 mile	10871245	60 mile
10897925	60 mile	11259883	60 mile	11360881	60 mile		

Job Hours

Date	On Location Hours	Operating Hours	Date	On Location Hours	Operating Hours	Date	On Location Hours	Operating Hours
10/6/11	4.5	0	10/7/11	24	2	10/8/11	2	2
TOTAL			<i>Total is the sum of each column separately</i>					

Job

Job Times

Formation Name	Top	Bottom	Called Out	Date	Time	Time Zone
Formation Depth (MD)			On Location	06 - Oct - 2011	16:20	MST
Form Type	BHST		Job Started	06 - Oct - 2011	19:30	MST
Job depth MD	1500. ft	Job Depth TVD	Job Completed	07 - Oct - 2011	23:10	MST
Water Depth		Wk Ht Above Floor	Departed Loc	08 - Oct - 2011	00:06	MST
Perforation Depth (MD)	From	To		08 - Oct - 2011	02:00	MST

Well Data

Description	New / Used	Max pressure psig	Size in	ID in	Weight lbm/ft	Thread	Grade	Top MD ft	Bottom MD ft	Top TVD ft	Bottom TVD ft
SURFACE CSG	New		9.625	9.001	32.3			.	1462.		

Sales/Rental/3rd Party (HES)

Description	Qty	Qty uom	Depth	Supplier
PLUG,CMTG, TOP, 9 5/8, HWE, 8.16 MIN/9.06 MA	1	EA		

Tools and Accessories

Type	Size	Qty	Make	Depth	Type	Size	Qty	Make	Depth	Type	Size	Qty	Make
Guide Shoe					Packer					Top Plug	9 5/8	1	
Float Shoe					Bridge Plug					Bottom Plug			
Float Collar					Retainer					SSR plug set			
Insert Float										Plug Container	9 5/8	1	
Stage Tool										Centralizers			

Miscellaneous Materials

Gelling Agt	Conc	Surfactant	Conc	Acid Type	Qty	Conc	%
Treatment Fld	Conc	Inhibitor	Conc	Sand Type	Size	Qty	

Fluid Data

Stage/Plug #: 1										
Fluid #	Stage Type	Fluid Name	Qty	Qty uom	Mixing Density lbm/gal	Yield ft ³ /sk	Mix Fluid Gal/sk	Rate bbl/min	Total Mix Fluid Gal/sk	

Stage/Plug #: 1									
Fluid #	Stage Type	Fluid Name	Qty	Qty uom	Mixing Density lbm/gal	Yield ft ³ /sk	Mix Fluid Gal/sk	Rate bbl/min	Total Mix Fluid Gal/sk
1	Water Spacer		20.00	bbl	8.34	.0	.0	4.0	
2	Lead Cement	VERSACEM (TM) SYSTEM (452010)	205.0	sacks	12.3	2.38	13.75	7.0	13.75
3	Tail Cement	VERSACEM (TM) SYSTEM (452010)	160.0	sacks	12.8	2.11	11.75	7.0	11.75
4	Displacement Fluid		111.60	bbl	8.34	.0	.0	10.0	
Calculated Values		Pressures		Volumes					
Displacement	111.6	Shut In: Instant		Lost Returns	0	Cement Slurry	147	Pad	
Top Of Cement	SURFACE	5 Min		Cement Returns	30	Actual Displacement	111.6	Treatment	
Frac Gradient		15 Min		Spacers	20	Load and Breakdown		Total Job	278.6
Rates									
Circulating		Mixing	7	Displacement	10	Avg. Job			8
Cement Left In Pipe	Amount	43.6 ft	Reason	Shoe Joint					
Frac Ring # 1 @	ID	Frac ring # 2 @	ID	Frac Ring # 3 @	ID	Frac Ring # 4 @	ID		
The Information Stated Herein Is Correct				Customer Representative Signature					

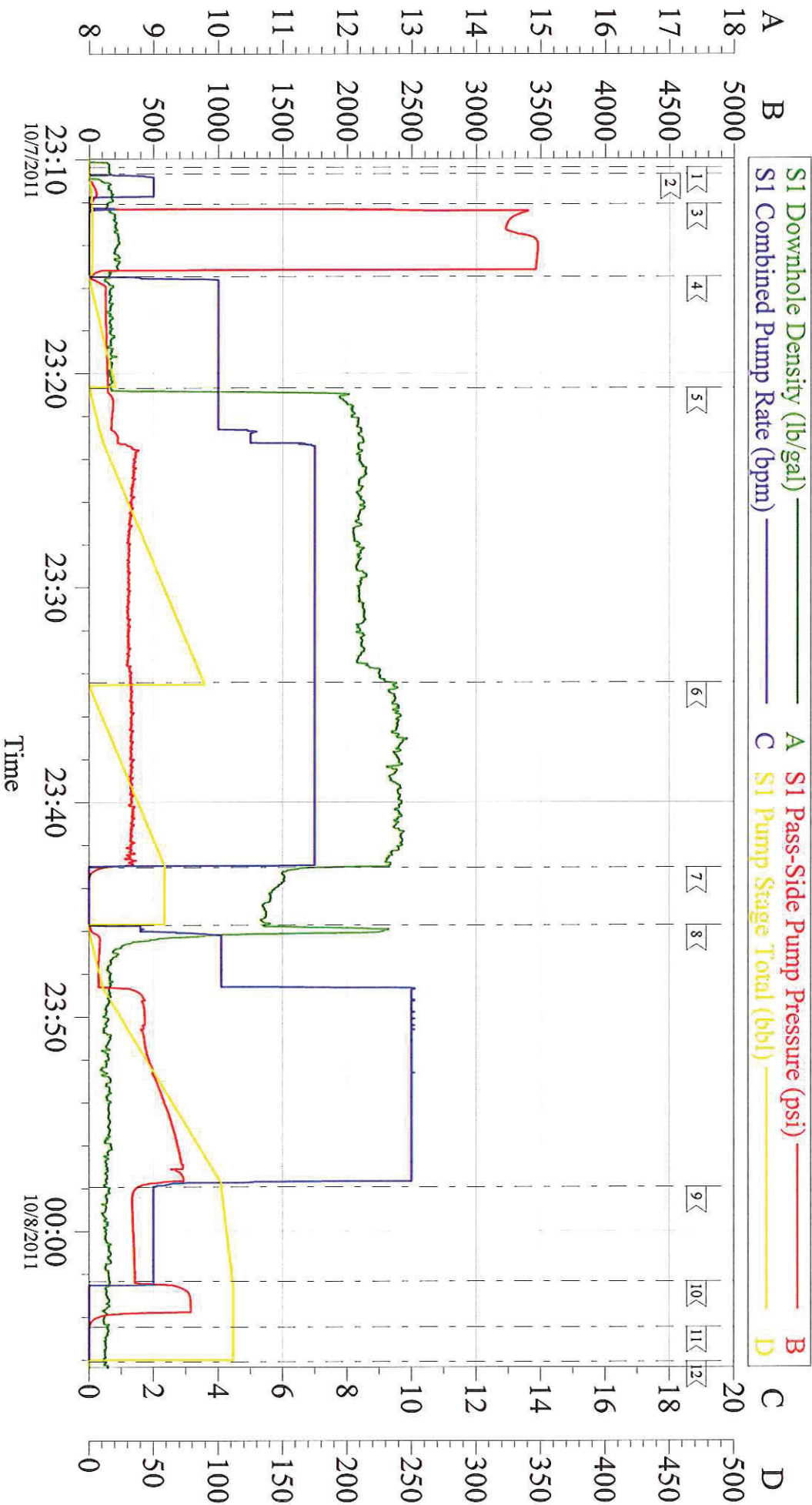
The Road to Excellence Starts with Safety

Sold To #: 300721	Ship To #: 2881944	Quote #:	Sales Order #: 8512793
Customer: WILLIAMS PRODUCTION RMT INC - EBUS		Customer Rep: OAKS, RICK	
Well Name: SG	Well #: 331-27	API/UWI #:	
Field: GRAND VALLEY	City (SAP): PARACHUTE	County/Parish: Garfield	State: Colorado
Legal Description:			
Lat: N 0 deg. OR N 0 deg. 0 min. 0 secs.		Long: E 0 deg. OR E 0 deg. 0 min. 0 secs.	
Contractor: H&P 278		Rig/Platform Name/Num: H&P 278	
Job Purpose: Cement Surface Casing			Ticket Amount:
Well Type: Development Well		Job Type: Cement Surface Casing	
Sales Person: KOHL, KYLE		Srvc Supervisor: SMITH, DUSTIN	MBU ID Emp #: 418015

Activity Description	Date/Time	Cht #	Rate bbl/min	Volume bbl		Pressure psig		Comments
				Stage	Total	Tubing	Casing	
Call Out	10/06/2011 16:20							ELITE # 8
Depart Yard Safety Meeting	10/06/2011 18:40							ALL HES EMPLOYEES
Arrive At Loc	10/06/2011 19:30							ARRIVED ON LOCATION 1 1/2 HOURS EARLY DIDNT START CHARGING TIME UNTIL REQUESTED ON LOCATION TIME RIG STILL RUNNING CSG RIG HAD PROBLEMS RUNNING CSG HAD TO PULL CSG AND GO BACK TO DRILLING ONCE BACK TO RUNNING CSG RIG HAD TO CIRCULATE CSG DOWN
Assessment Of Location Safety Meeting	10/07/2011 17:41							ALL HES EMPLOYEES
Pre-Rig Up Safety Meeting	10/07/2011 21:45							ALL HES EMPLOYEES
Rig-Up Equipment	10/07/2011 22:00							1 F-550 PICKUP 1 HT-400 PUMP TRUCK 2 660 BULK TRUCKS
Pre-Job Safety Meeting	10/07/2011 22:55							ALL HES EMPLOYEES AND RIG CREW
Rig-Up Completed	10/07/2011 23:10							RIG CIRCULATED FOR 1 HOUR PRIOR TO JOB
Start Job	10/07/2011 23:10							TD:1500 TP: 1462 SJ: 43.6 MUD WT: 10.2 PPG 9 5/8 32.3# CSG 13 1/2 OH

Activity Description	Date/Time	Cht #	Rate bbl/min	Volume bbl		Pressure psig		Comments
				Stage	Total	Tubing	Casing	
Test Lines	10/07/2011 23:12					3492.0		PRESSURE TEST OK
Pump Spacer	10/07/2011 23:15		4	20	20		160.0	FRESH WATER
Pump Lead Cement	10/07/2011 23:20		7	86.9	86.9		361.0	205 SKS 12.3 PPG 2.38 YIELD 13.75 GAL/SK CEMENT WEIGHED UP VIA MUD SCALES THROUGHOUT LEAD CEMENT
Pump Tail Cement	10/07/2011 23:34		7	60.1	60.1		362.0	160 SKS 12.8 2.11 YIELD 11.75 GAL/SK CEMENT WEIGHED UP VIA MUD SCALES THROUGHOUT TAIL CEMENT
Shutdown	10/07/2011 23:43							
Drop Plug	10/07/2011 23:43							PLUG AWAY NO PROBLEMS
Pump Displacement	10/07/2011 23:45		10	111.6	111.6		759.0	FRESH WATER WASHED UP ON TOP OF PLUG AS PER COMPANY REP
Slow Rate	10/07/2011 23:57		2	101	101		390.0	SLOW RATE TO BUMP PLUG
Bump Plug	10/08/2011 00:02		2	111.6	111.6		810.0	PSI BEFORE BUMPING WAS 390 PSI BUMPED PLUG UP TO 810 PSI
Check Floats	10/08/2011 00:04							FLOATS HELD 1/2 BBL BACK INTO DISPLACEMENT TANK
End Job	10/08/2011 00:06							GOOD CIRCULATION THROUGHOUT JOB NO PIPE MOVEMENT DURING JOB 30 BBLS CEMENT TO SURFACE
Pre-Rig Down Safety Meeting	10/08/2011 00:10							ALL HES EMPLOYEES
Rig-Down Equipment	10/08/2011 01:00							
Pre-Convoy Safety Meeting	10/08/2011 01:45							ALL HES EMPLOYEES
Crew Leave Location	10/08/2011 02:00							THANK YOU FOR USING HALLIBURTON CEMENT DUSTIN SMITH AND CREW

WILLIAMS PRODUCTION SG 331-27 9 5/8 SURFACE



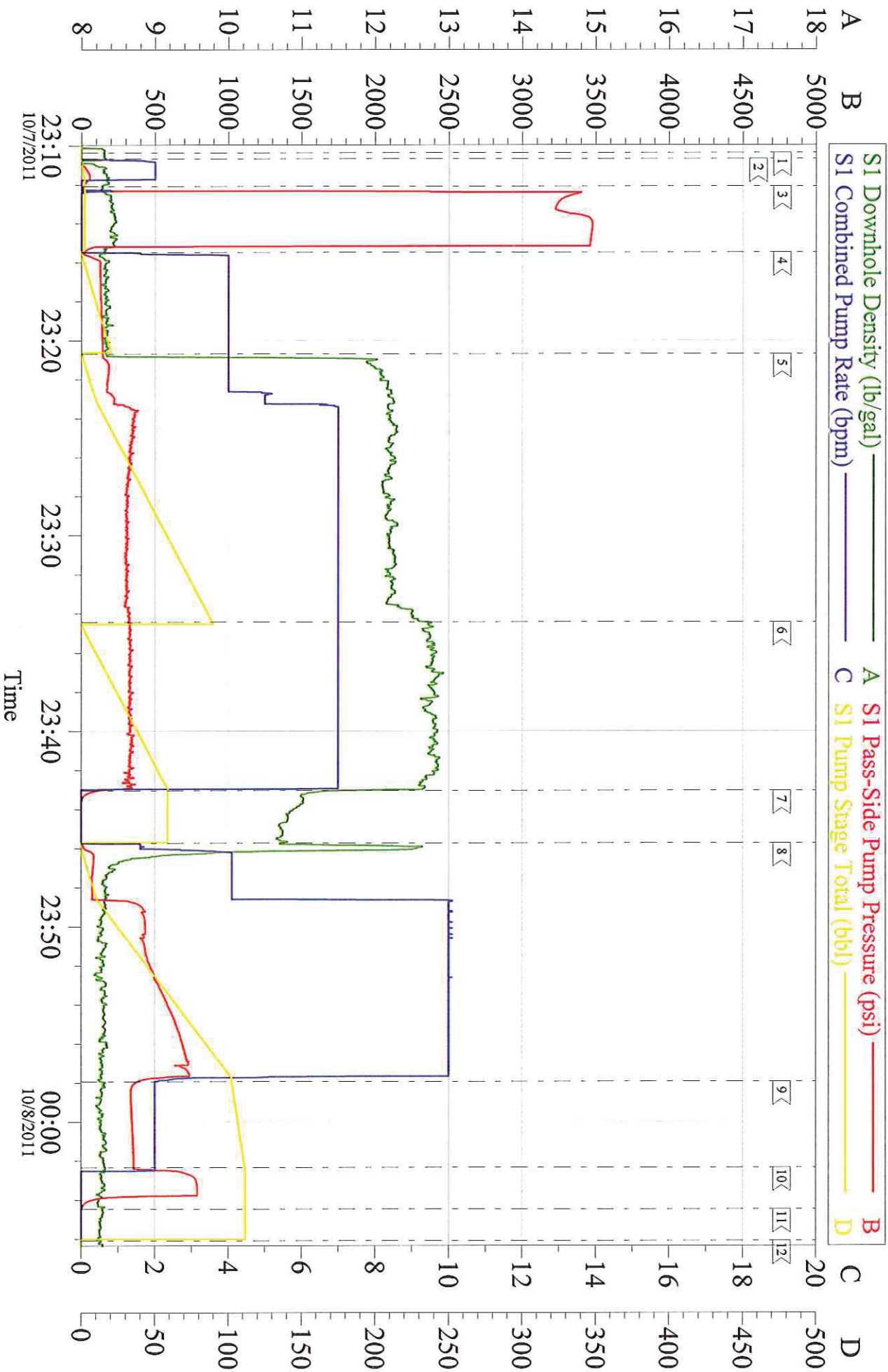
Local Event Log

1	START JOB	10/7/2011 23:10:22	2	FILL LINES	10/7/2011 23:10:40	3	TEST LINES	10/7/2011 23:12:05
4	PUMP H2O SPACER	10/7/2011 23:15:29	5	PUMP LEAD CEMENT	10/7/2011 23:20:42	6	PUMP TAIL CEMENT	10/7/2011 23:34:26
7	SHUTDOWN/ DROP PLUG	10/7/2011 23:43:02	8	PUMP DISPLACEMENT	10/7/2011 23:45:43	9	SLOW RATE	10/7/2011 23:57:56
10	BUMP PLUG	10/8/2011 00:02:21	11	CHECK FLOATS	10/8/2011 00:04:28	12	END JOB	10/8/2011 00:06:06

Customer:	WILLIAMS PRODUCTION	Job Date:	07-Oct-2011	Sales Order #:	8512793
Well Description:	SG 331-27	Job Type:	9 5/8 SURFACE	ADC Used:	YES
Company Rep:	RICK OAKS	Cement Supervisor:	DUSTIN SMITH	Elite #:	8
					RYAN WYCKOFF

WILLIAMS PRODUCTION

SG 331-27 9 5/8 SURFACE



Customer: WILLIAMS PRODUCTION
 Well Description: SG 331-27
 Company Rep: RICK OAKS

Job Date: 07-Oct-2011
 Job Type: 9 5/8 SURFACE
 Cement Supervisor: DUSTIN SMITH

Sales Order #: 8512793
 ADC Used: YES
 Elite #: 8 RYAN WYCKOFF

OptiCem v6.4.10
 08-Oct-11 00:13