
BILL BARRETT CORPORATION

**GGU 24C-30-691
MAMM CREEK
Garfield County , Colorado**

Cement Surface Casing
26-Feb-2012

Post Job Report

The Road to Excellence Starts with Safety

Sold To #: 343492		Ship To #: 2908831		Quote #:		Sales Order #: 9306414	
Customer: BILL BARRETT CORPORATION E-BILL				Customer Rep: Lauer, Casey			
Well Name: GGU			Well #: 24C-30-691			API/UWI #: 05-045-21251	
Field: MAMM CREEK		City (SAP): UNKNOWN		County/Parish: Garfield		State: Colorado	
Lat: N 39.492 deg. OR N 39 deg. 29 min. 32.622 secs.				Long: W 107.606 deg. OR W -108 deg. 23 min. 40.15 secs.			
Contractor: ProPetro Services Inc.			Rig/Platform Name/Num: ProPetro				
Job Purpose: Cement Surface Casing							
Well Type: Development Well			Job Type: Cement Surface Casing				
Sales Person: METLI, MARSHALL			Srvc Supervisor: SMITH, DUSTIN			MBU ID Emp #: 418015	

Job Personnel

HES Emp Name	Exp Hrs	Emp #	HES Emp Name	Exp Hrs	Emp #	HES Emp Name	Exp Hrs	Emp #
HYDE, DUSTIN C	5.0	453940	KUKUS, CHRISTOPHER A	5.0	413952	MILLER II, MATTHEW Reginald	5.0	425164
SMITH, DUSTIN Michael	5.0	418015						

Equipment

HES Unit #	Distance-1 way	HES Unit #	Distance-1 way	HES Unit #	Distance-1 way	HES Unit #	Distance-1 way
10567589C	120 mile	10783493	120 mile	10822007	120 mile	11259883	120 mile
11808829	120 mile						

Job Hours

Date	On Location Hours	Operating Hours	Date	On Location Hours	Operating Hours	Date	On Location Hours	Operating Hours
02/26/2012	5.0	2						

TOTAL	Total is the sum of each column separately							
--------------	--	--	--	--	--	--	--	--

Job

Formation Name	Top	Bottom	Called Out	Date	Time	Time Zone
Formation Depth (MD)			On Location	26 - Feb - 2012	03:00	MST
Form Type	BHST		Job Started	26 - Feb - 2012	05:14	MST
Job depth MD	725. ft	Job Depth TVD	725. ft	Job Completed	26 - Feb - 2012	06:08
Water Depth		Wk Ht Above Floor	. ft	Departed Loc	26 - Feb - 2012	08:00
Perforation Depth (MD)	From	To				

Well Data

Description	New / Used	Max pressure psig	Size in	ID in	Weight lbm/ft	Thread	Grade	Top MD ft	Bottom MD ft	Top TVD ft	Bottom TVD ft
12 1/4" Open Hole				12.25				.	725.		
9 5/8" Surface Casing	New		9.625	8.921	36.		J-55	.	705.1		

Sales/Rental/3rd Party (HES)

Description	Qty	Qty uom	Depth	Supplier
R/A DENSOMETER W/CHART RECORDER,/JOB,ZI	1	JOB		
ADC (AUTO DENSITY CTRL) SYS, /JOB,ZI	1	JOB		
PORT. DATA ACQUIS. W/OPTICEM RT W/HES	1	EA		
PLUG,CMTG,TOP,9 5/8,HWE,8.16 MIN/9.06 MA	1	EA		

Tools and Accessories

Type	Size	Qty	Make	Depth	Type	Size	Qty	Make	Depth	Type	Size	Qty	Make
Guide Shoe					Packer					Top Plug	9 5/8	1	HES
Float Shoe					Bridge Plug					Bottom Plug			
Float Collar					Retainer					SSR plug set			
Insert Float										Plug Container			
Stage Tool										Centralizers			

Miscellaneous Materials

Gelling Agt	Conc	Surfactant	Conc	Acid Type	Qty	Conc	%
-------------	------	------------	------	-----------	-----	------	---

Treatment Fld		Conc		Inhibitor		Conc		Sand Type		Size		Qty	
Fluid Data													
Stage/Plug #: 1													
Fluid #	Stage Type	Fluid Name			Qty	Qty uom	Mixing Density lbm/gal	Yield ft ³ /sk	Mix Fluid Gal/sk	Rate bbl/min	Total Mix Fluid Gal/sk		
1	Water Spacer				20.00	bbl	8.34	.0	.0	4.0			
2	Lead Cement	VERSACEM (TM) SYSTEM (452010)			120.0	sacks	12.3	2.38	13.77	6.0	13.77		
		13.77 Gal			FRESH WATER								
3	Tail Cement	SWIFTCEM (TM) SYSTEM (452990)			120.0	sacks	14.2	1.43	6.85	6.0	6.85		
		6.85 Gal			FRESH WATER								
4	Displacement				51.00	bbl	8.33			6.0			
Calculated Values		Pressures			Volumes								
Displacement	51.0	Shut In: Instant			Lost Returns		0	Cement Slurry		80.5	Pad		
Top Of Cement	SURFACE	5 Min			Cement Returns		30	Actual Displacement		51.0	Treatment		
Frac Gradient		15 Min			Spacers		20	Load and Breakdown			Total Job		152.5
Rates													
Circulating		Mixing			6	Displacement		6	Avg. Job		6		
Cement Left In Pipe	Amount	44.9 ft	Reason		Shoe Joint								
Frac Ring # 1 @	ID		Frac ring # 2 @	ID		Frac Ring # 3 @	ID		Frac Ring # 4 @	ID			
The Information Stated Herein Is Correct					Customer Representative Signature								

The Road to Excellence Starts with Safety

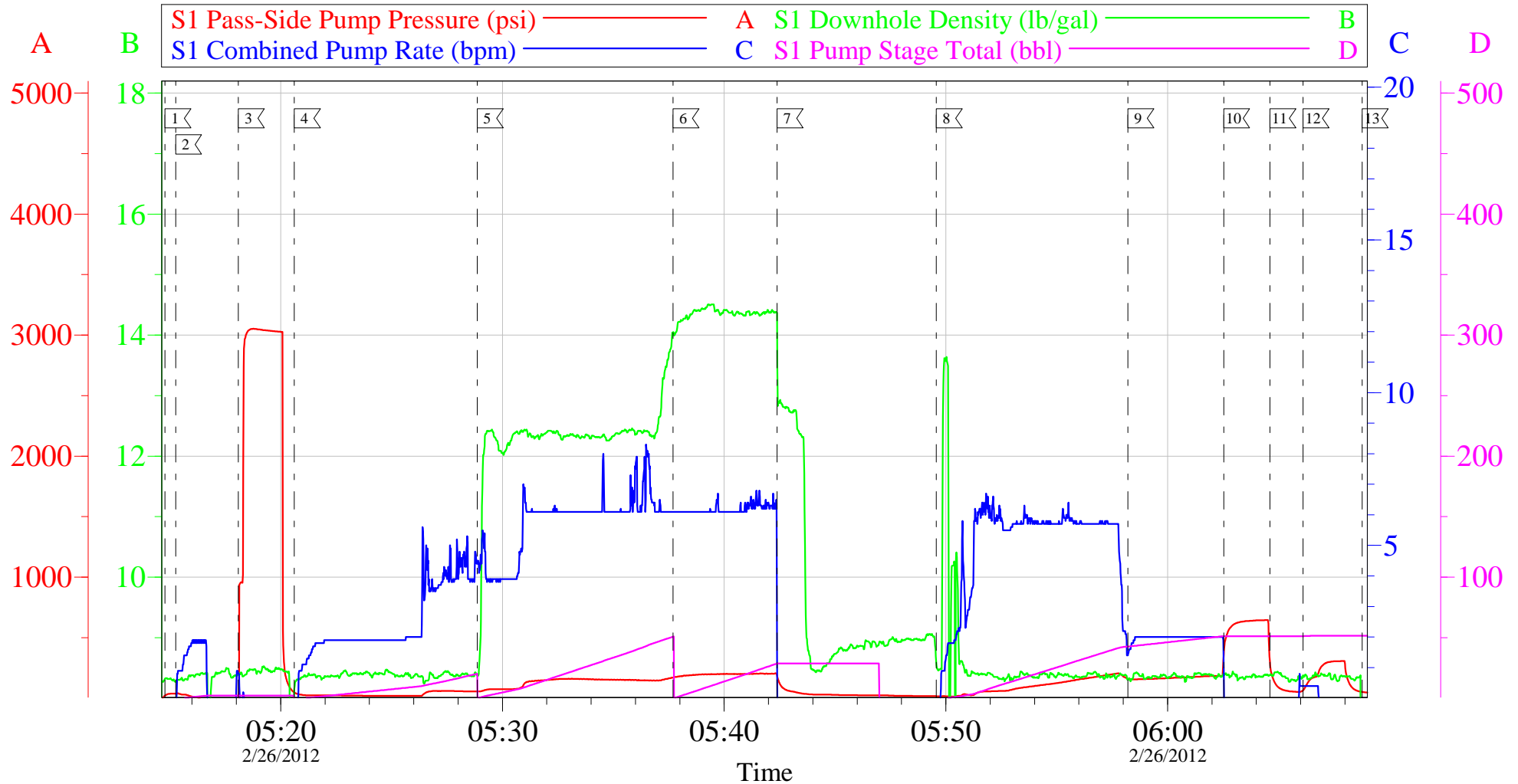
Sold To #: 343492	Ship To #: 2908831	Quote #:	Sales Order #: 9306414
Customer: BILL BARRETT CORPORATION E-BILL		Customer Rep: Lauer, Casey	
Well Name: GGU	Well #: 24C-30-691	API/UWI #: 05-045-21251	
Field: MAMM CREEK	City (SAP): UNKNOWN	County/Parish: Garfield	State: Colorado
Legal Description:			
Lat: N 39.492 deg. OR N 39 deg. 29 min. 32.622 secs.		Long: W 107.606 deg. OR W -108 deg. 23 min. 40.15 secs.	
Contractor: ProPetro Services Inc.		Rig/Platform Name/Num: ProPetro	
Job Purpose: Cement Surface Casing			Ticket Amount:
Well Type: Development Well		Job Type: Cement Surface Casing	
Sales Person: METLI, MARSHALL		Srvc Supervisor: SMITH, DUSTIN	MBU ID Emp #: 418015

Activity Description	Date/Time	Cht #	Rate bbl/ min	Volume bbl		Pressure psig		Comments
				Stage	Total	Tubing	Casing	
Call Out	02/26/2012 03:00							ELITE # 3
Arrive At Loc	02/26/2012 03:00							CREW ON LOCATION FROM PREVIOUS JOB
Assessment Of Location Safety Meeting	02/26/2012 03:30							ALL HES EMPLOYEES
Pre-Rig Up Safety Meeting	02/26/2012 03:40							ALL HES EMPLOYEES
Rig-Up Equipment	02/26/2012 03:50							1 F-550 PICKUP 1 HT- 400 PUMP TRUCK 1 660 BULK TRUCK
Pre-Job Safety Meeting	02/26/2012 05:00							ALL HES EMPLOYEES AND RIG CREW
Rig-Up Completed	02/26/2012 05:14							
Start Job	02/26/2012 05:14							TD: 725 TP: 705.1 SJ: 44.9 9 5/8 35# CSG 12 1/4 O.H. HOLE WAS DRILLED WITH AIR NO WELL FLUID
Test Lines	02/26/2012 05:18					3059. 0		PRESSURE TEST OK
Pump Spacer	02/26/2012 05:20		4	20	20		76.0	FRESH WATER
Pump Lead Cement	02/26/2012 05:28		6	50.9	50.9		188.0	120 SKS 12.3 PPG 2.38 YIELD 13.77 GAL/SK LEAD CEMENT WEIGHT VERIFIED VIA MUD SCALES THROUGHOUT LEAD CEMENT
Activity Description	Date/Time	Cht #	Rate bbl/ min	Volume bbl		Pressure psig		Comments
				Stage	Total	Tubing	Casing	

Pump Tail Cement	02/26/2012 05:37		6	30.6	30.6		218.0	120 SKS 14.2 PPG 1.43 GAL/SK 6.85 GAL/SK TAIL CEMENT WEIGHT VERIFIED VIA MUD SCALES THROUGHOUT TAIL CEMENT
Shutdown	02/26/2012 05:42							GOT RETURNS 40 BBL INTO LEAD CEMENT
Drop Plug	02/26/2012 05:42							JOB PUMPED THROUGH SWAGE.
Pump Displacement	02/26/2012 05:49		6	51	51		220.0	FRESH WATER
Slow Rate	02/26/2012 05:58		2	41	41		200.0	SLOW RATE TO BUMP PLUG
Bump Plug	02/26/2012 06:02		2	51	51		636.0	PSI BEFORE BUMPING @ 200 PSI BUMPED PLUG UP TO 636 PSI
Check Floats	02/26/2012 06:04							FLOATS HELD 3/4 BBL BACK TO DISPLACEMENT TANK
End Job	02/26/2012 06:08							PRESSURED UP TO 200 PSI AND SHUT IN 2 INCH ON SWAGE 30 BBL CEMENT TO SURFACE
Pre-Rig Down Safety Meeting	02/26/2012 06:10							ALL HES EMPLOYEES
Rig-Down Equipment	02/26/2012 06:20							RIG DOWN AND WAIT FOR RIG TO DRILL NEXT WELL
Pre-Convoy Safety Meeting	02/26/2012 07:50							ALL HES EMPLOYEES
Crew Leave Location	02/26/2012 08:00							CREW HEAD TO YARD AND GET 2 MORE BULK TRUCKS FOR NEXT 2 JOBS PUMP REMAINS ON LOCATION
Comment	02/26/2012 08:00							THANK YOU FOR USING HALLIBURTON CEMENT DUSTIN SMITH AND CREW

BILL BARRETT GGU 24C-30-691

9 5/8 SURFACE



Local Event Log

1 START JOB	05:14:47	2 PRIME LINES	05:15:16	3 PRESSURE TEST	05:18:05
4 PUMP SPACER	05:20:37	5 PUMP LEAD CEMENT	05:28:52	6 PUMP TAIL CEMENT	05:37:42
7 SHUT DOWN / DROP PLUG	05:42:23	8 PUMP DISPLACEMENT	05:49:34	9 SLOW RATE	05:58:12
10 BUMP PLUG	06:02:32	11 CHECK FLOATS	06:04:37	12 PRESSURE UP / SHUT IN WELL	06:06:06
13 RELEASE PRESSURE / END JOB	06:08:47				

Customer: BILL BARRETT
Well Description: GGU 24C-30-691
Company Rep: CASEY LAUER

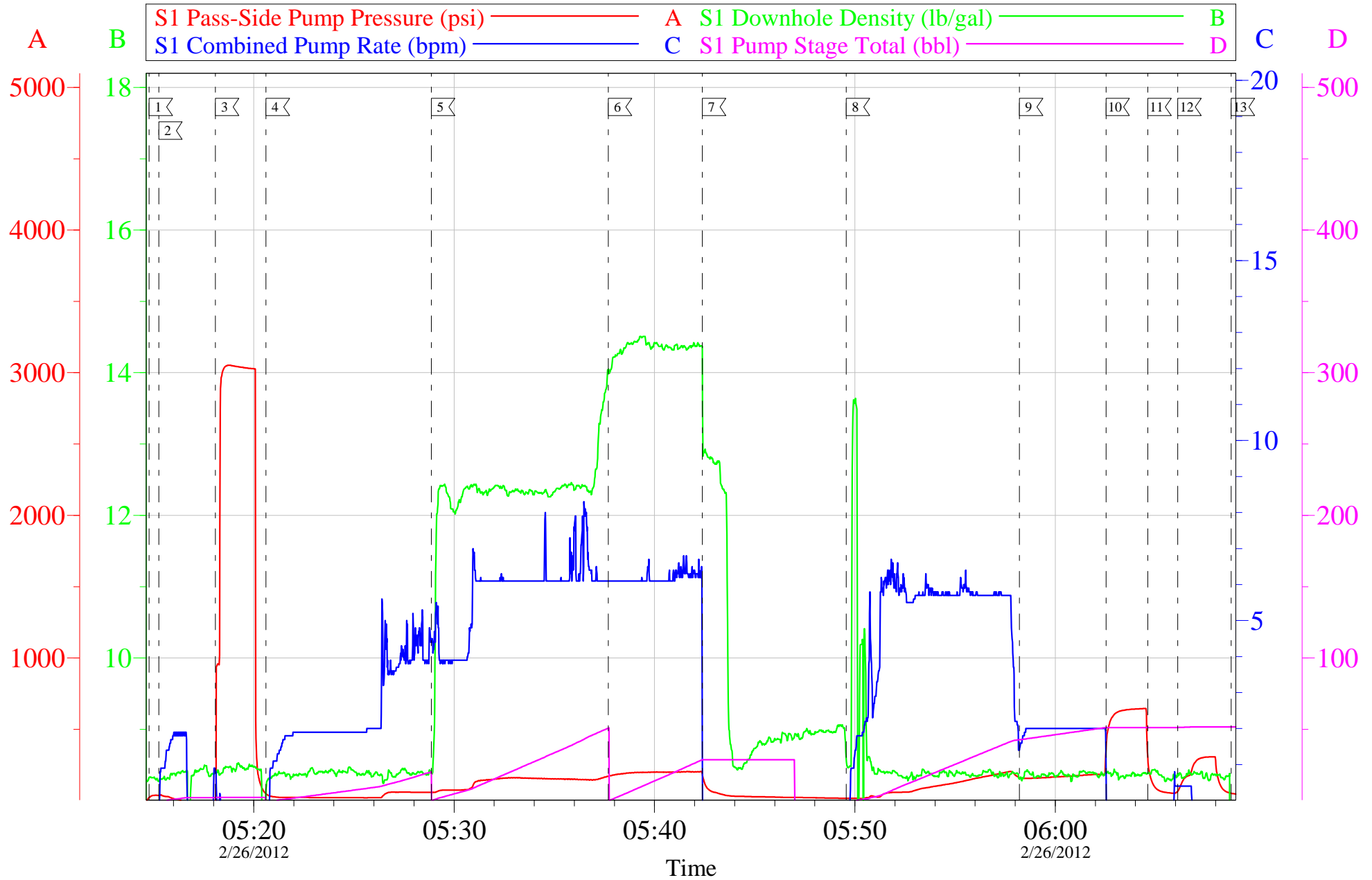
Job Date: 26-Feb-2012
Job Type: 9 5/8 SURFACE
Cement Supervisor: DUSTIN SMITH

Sales Order #: 9306414
ADC Used: YES
Elite #: 3 REGGIE MILLER

OptiCem v6.4.10
26-Feb-12 06:18

BILL BARRETT GGU 24C-30-691

9 5/8 SURFACE



Customer: BILL BARRETT	Job Date: 26-Feb-2012	Sales Order #: 9306414
Well Description: GGU 24C-30-691	Job Type: 9 5/8 SURFACE	ADC Used: YES
Company Rep: CASEY LAUER	Cement Supervisor: DUSTIN SMITH	Elite #: 3 REGGIE MILLER

OptiCem v6.4.10
26-Feb-12 06:19

HALLIBURTON

Water Analysis Report

Company: BILL BARRETT

Submitted by: DUSTIN SMITH

Attention: J. TROUT/C.MARTINEZ

Lease GGU FED

Well # 24C-30-691

Date: 2/26/2012

Date Rec.: 2/26/2012

S.O.# 9306414

Job Type: SURFACE

Specific Gravity	<i>MAX</i>	1
pH	<i>8</i>	6.8
Potassium (K)	<i>5000</i>	0 Mg / L
Calcium (Ca)	<i>500</i>	120 Mg / L
Iron (FE2)	<i>300</i>	0 Mg / L
Chlorides (Cl)	<i>3000</i>	0 Mg / L
Sulfates (SO ₄)	<i>1500</i>	UNDER 200 Mg / L
Chlorine (Cl ₂)		0 Mg / L
Temp	<i>40-80</i>	40 Deg
Total Dissolved Solids		380 Mg / L

Respectfully: DUSTIN SMITH

Title: CEMENTING SUPERVISOR

Location: Grand Junction, CO

NOTICE:

This report is limited to the described sample tested. Any person using or relying on this report agrees that Halliburton shall not be liable for any loss or damage whether due to act or omission resulting from such report or

Sales Order #: 9306414	Line Item: 10	Survey Conducted Date: 2/26/2012
Customer: BILL BARRETT CORPORATION E-BILL		Job Type (BOM): CMT SURFACE CASING BOM
Customer Representative:		API / UWI: (leave blank if unknown) 05-045-21251
Well Name: GGU		Well Number: 24C-30-691
Well Type: Development Well	Well Country: United States of America	
H2S Present: No	Well State: Colorado	Well County: Garfield

Dear Customer,

We hope that you were satisfied with the service quality of this job performed by Halliburton. It is the aim of our management and service personnel to deliver equipment and service of a standard unmatched in the service sector of the energy industry.

Please take the time to let us know if our performance met with your satisfaction. Please be as critical as possible to ensure we constantly improve our service. Your comments are of great value to us and are intended for the exclusive use of Halliburton.

CUSTOMER SATISFACTION SURVEY

CATEGORY	CUSTOMER SATISFACTION RESPONSE	
Survey Conducted Date	The date the survey was conducted	2/26/2012
Survey Interviewer	The survey interviewer is the person who initiated the survey.	DUSTIN SMITH (HX37079)
Customer Participation	Did the customer participate in this survey? (Y/N)	No
Customer Representative	Enter the Customer representative name	
HSE	Was our HSE performance satisfactory? Circle Y or N	
Equipment	Were you satisfied with our Equipment? Circle Y or N	
Personnel	Were you satisfied with our people? Circle Y or N	
Customer Comment	Customer's Comment	

CUSTOMER SIGNATURE

Sales Order #: 9306414	Line Item: 10	Survey Conducted Date: 2/26/2012
Customer: BILL BARRETT CORPORATION E-BILL		Job Type (BOM): CMT SURFACE CASING BOM
Customer Representative:		API / UWI: (leave blank if unknown) 05-045-21251
Well Name: GGU		Well Number: 24C-30-691
Well Type: Development Well	Well Country: United States of America	
H2S Present: No	Well State: Colorado	Well County: Garfield

KEY PERFORMANCE INDICATORS

General	
Survey Conducted Date	2/26/2012
The date the survey was conducted	

Cementing KPI Survey	
Type of Job	0
Select the type of job. (Cementing or Non-Cementing)	
Select the Maximum Deviation range for this Job	Vertical
What is the highest deviation for the job you just completed? This may not be the maximum well deviation.	
Total Operating Time (hours)	2
Total Operating Hours Including Rig-up, Pumping, Rig-down. Enter in decimal format.	
HSE Incident, Accident, Injury	No
HSE Incident, Accident, Injury. This should be recordable incidents only.	
Was the job purpose achieved?	Yes
Was the job delivered correctly as per customer agreed design?	
Operating Hours (Pumping Hours)	1
Total number of hours pumping fluid on this job. Enter in decimal format.	
Customer Non-Productive Rig Time (hrs)	0
Lost time due to Halliburton in the start, execution, or completion of an ordered service or product, or delays in a follow-on service. Enter in decimal format. 0 if none.	
Type of Rig Classification Job Was Performed	Drilling Rig (Portable)
Type Of Rig (classification) Job Was Performed On	
Number Of JSAs Performed	6
Number Of Jsas Performed	
Number of Unplanned Shutdowns	0
Unplanned shutdown is when injection stops for any period of time.	
Was this a Primary Cement Job (Yes / No)	Yes

Sales Order #: 9306414	Line Item: 10	Survey Conducted Date: 2/26/2012
Customer: BILL BARRETT CORPORATION E-BILL		Job Type (BOM): CMT SURFACE CASING BOM
Customer Representative:		API / UWI: (leave blank if unknown) 05-045-21251
Well Name: GGU		Well Number: 24C-30-691
Well Type: Development Well	Well Country: United States of America	
H2S Present: No	Well State: Colorado	Well County: Garfield

Primary Cement Job= Casing job, Liner job, or Tie-back job.	
Did We Run Wiper Plugs? Did We Run Top And Bottom Casing Wiper Plugs?	Top
Mixing Density of Job Stayed in Designed Density Range (0-100%) Density Range defined as +/- .20 ppg. Calculation: Total BBLs cement mixed at designed density divided by total BBLs of cement multiplied by 100	90
Was Automated Density Control Used? Was Automated Density Control (ADC) Used ?	Yes
Pump Rate (percent) of Job Stayed At Designed Pump Rate Pump Rate range defined as +/- 1bbl/min. Calculation: Total BBLs of fluid pumped at the designed rate divided by Total BBLs of fluid pumped, multiplied by 100	90
Nbr of Remedial Sqz Jobs Rqd - Competition Number Of Remedial Squeeze Jobs Required After Primary Job Performed By Competition	0
Nbr of Remedial Plug Jobs Rqd - HES Number Of Remedial Plug Jobs Needed After Primary Plug Pumped By HES	0
Nbr of Remedial Sqz Jobs Rqd - HES Number Of Remedial Squeeze Jobs Required After Primary Job Performed By HES	0