

**LEGEND:**

 PROPOSED LOCATION

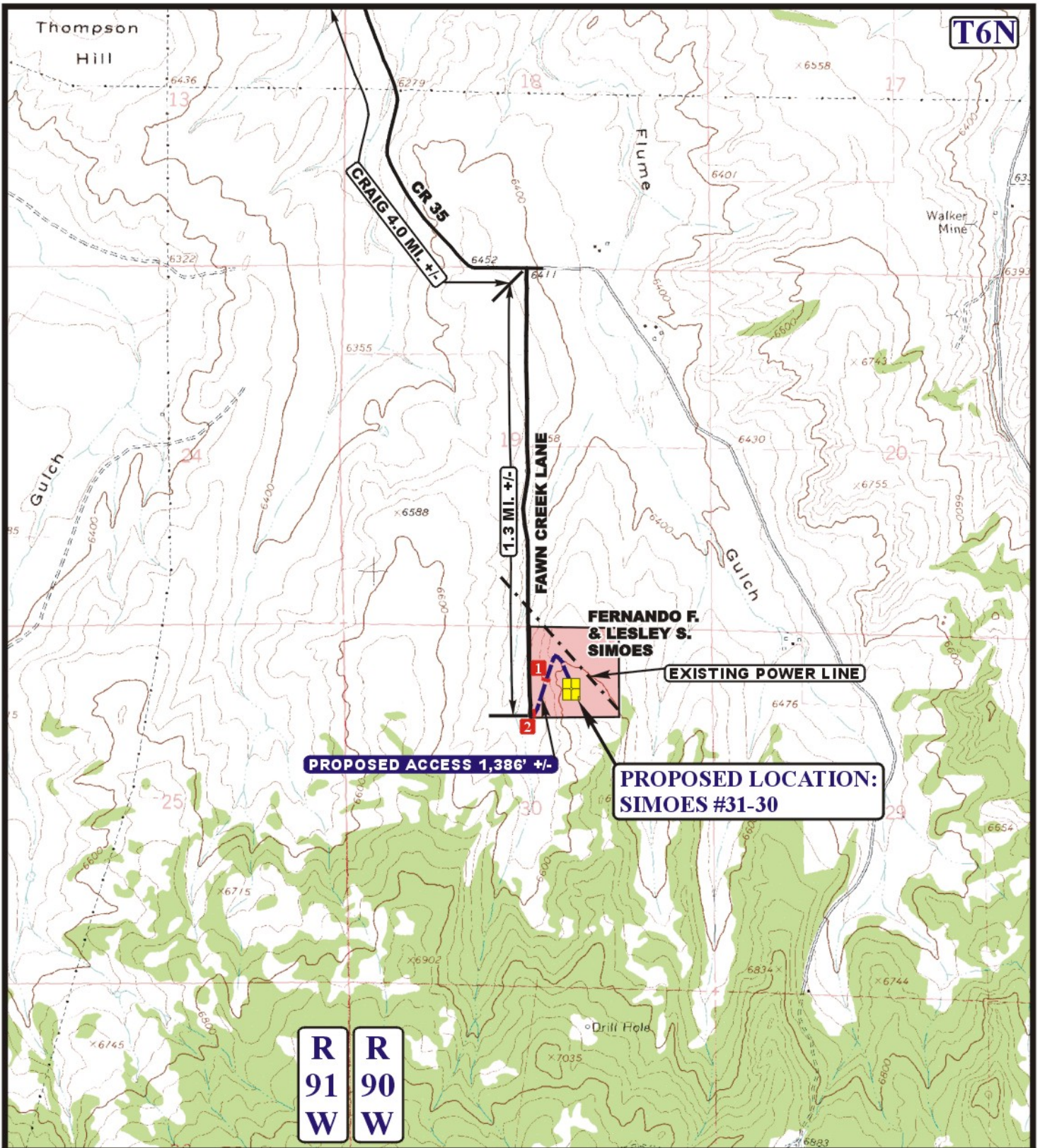


**QUICKSILVER RESOURCES, INC.**

**SIMOES #31-30**  
**SECTION 30, T6N, R90W, 6th P.M.**  
**895' FNL 2057' FEL**

**UES** Uintah Engineering & Land Surveying  
 85 South 200 East Vernal, Utah 84078  
 (435) 789-1017 \* FAX (435) 789-1813

<b>ACCESS ROAD</b>	<b>03</b>	<b>06</b>	<b>12</b>	<b>A</b> <b>TOPO</b>
<b>MAP</b>	MONTH	DAY	YEAR	
SCALE: 1:100,000	DRAWN BY: A.T.		REVISED: 00-00-00	



**R 91 W**  
**R 90 W**

**LEGEND:**

- EXISTING ROAD
- PROPOSED ACCESS ROAD
- EXISTING POWER LINE
- 24" CMP REQUIRED
- CATTLE GUARD REQUIRED

**U&L S** Uintah Engineering & Land Surveying  
85 South 200 East Vernal, Utah 84078  
(435) 789-1017 \* FAX (435) 789-1813



**QUICKSILVER RESOURCES, INC.**

**SIMOES #31-30**  
**SECTION 30, T6N, R90W, 6th P.M.**  
**895' FNL 2057' FEL**

**ACCESS ROAD MAP**    **03 06 12**  
MONTH    DAY    YEAR

SCALE: 1" = 2000'    DRAWN BY: A.T.    REVISED: 00-00-00    **B TOPO**