

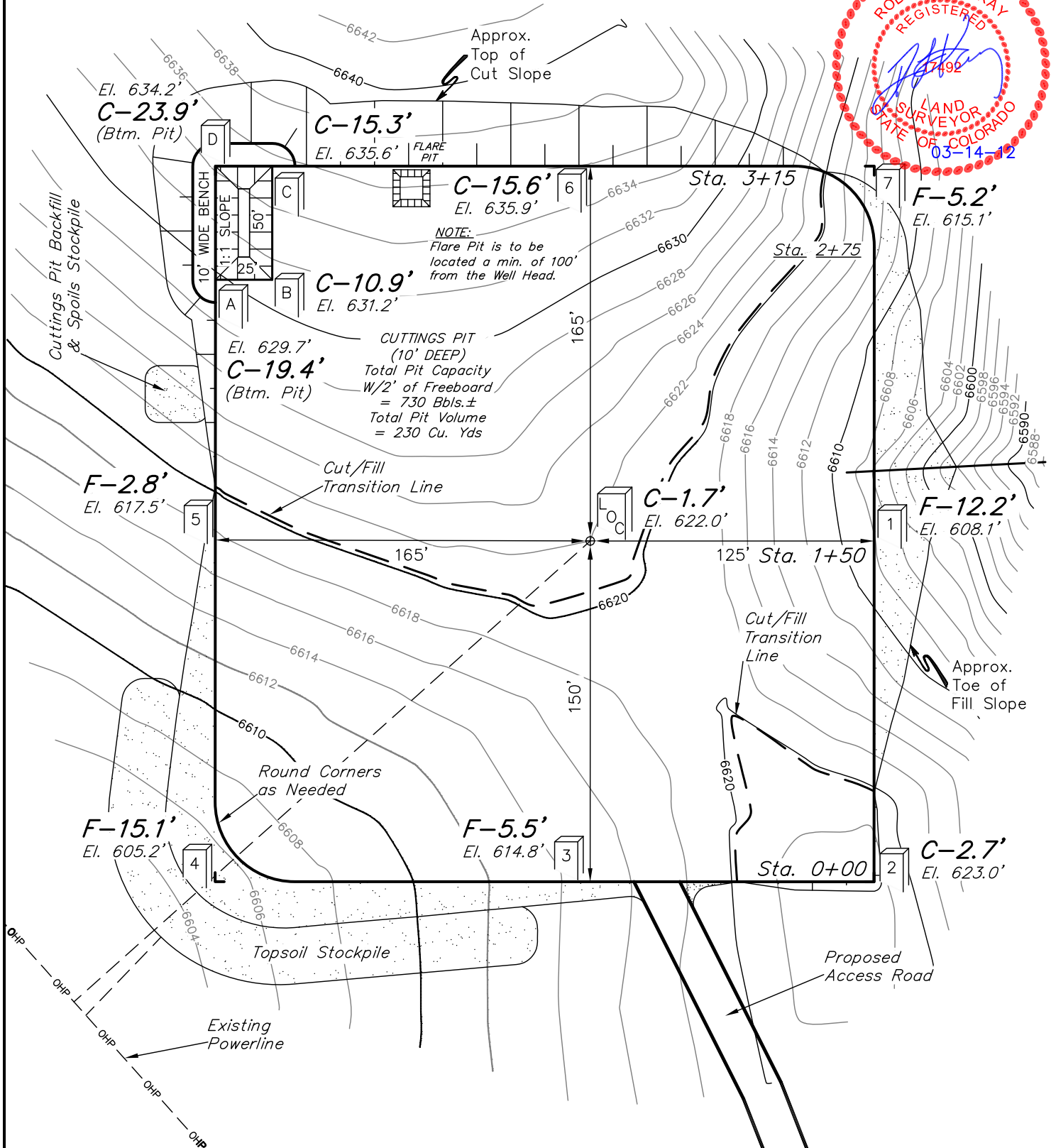
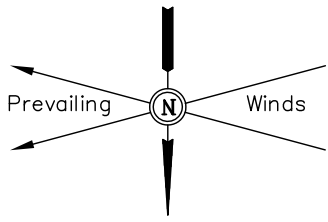
QUICKSILVER RESOURCES, INC.

CONSTRUCTION LAYOUT FOR

SIMOES #31-30  
SECTION 30, T6N, R90W, 6th P.M.  
895' FNL 2057' FEL

FIGURE #1

SCALE: 1" = 60'  
DATE: 03-09-12  
DRAWN BY: S.R.L.



Elev. Ungraded Ground At Loc. Stake = 6622.0'  
FINISHED GRADE ELEV. AT LOC. STAKE = 6620.3'

UINTAH ENGINEERING & LAND SURVEYING  
85 So. 200 East \* Vernal, Utah 84078 \* (435) 789-1017

QUICKSILVER RESOURCES, INC.

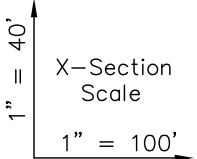
CONSTRUCTION LAYOUT CROSS SECTIONS FOR

SIMOES #31-30

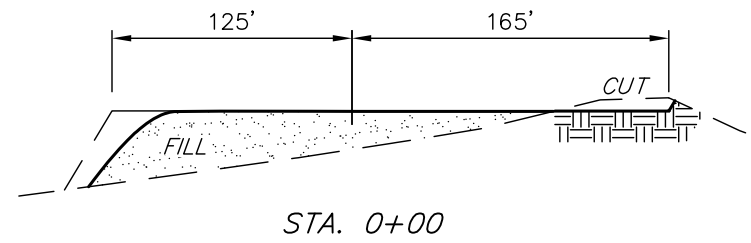
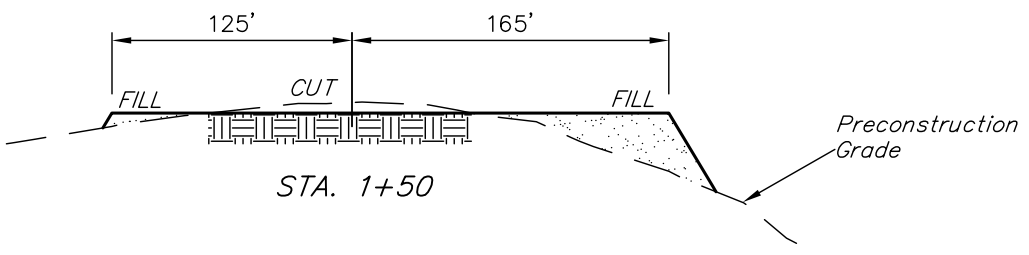
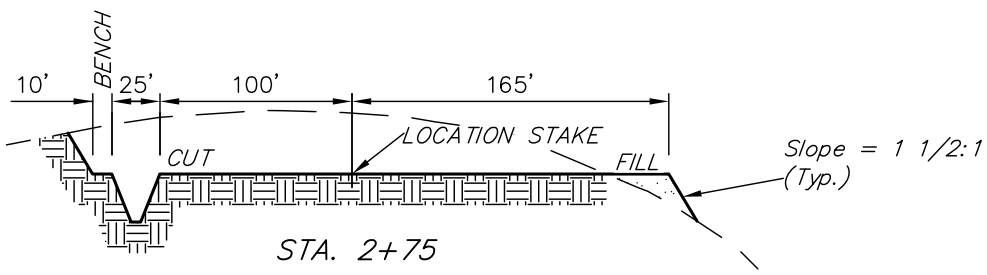
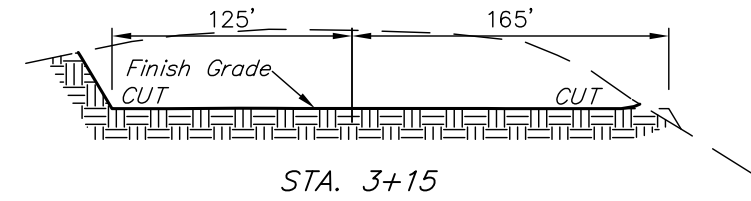
SECTION 30, T6N, R90W, 6th P.M.

895' FNL 2057' FEL

FIGURE #2



DATE: 03-09-12  
DRAWN BY: S.R.L.



NOTE:

Topsoil should not be Stripped Below Finished Grade on Substructure Area.

APPROXIMATE ACREAGES

WELL SITE DISTURBANCE	= ± 2.723 ACRES
ACCESS ROAD DISTURBANCE	= ± 0.955 ACRES
<b>TOTAL</b>	<b>= ± 3.678 ACRES</b>

\* NOTE:  
FILL QUANTITY INCLUDES 5% FOR COMPACTION

APPROXIMATE YARDAGES

(6") Topsoil Stripping	= 2,140 Cu. Yds.
Remaining Location	= 12,870 Cu. Yds.
<b>TOTAL CUT</b>	<b>= 15,010 CU. YDS.</b>
<b>FILL</b>	<b>= 12,750 CU. YDS.</b>

EXCESS MATERIAL	= 2,260 Cu. Yds.
Topsoil & Pit Backfill (1/2 Pit Vol.)	= 2,260 Cu. Yds.
EXCESS UNBALANCE (After Interim Rehabilitation)	= 0 Cu. Yds.

UINTAH ENGINEERING & LAND SURVEYING  
85 So. 200 East \* Vernal, Utah 84078 \* (435) 789-1017