

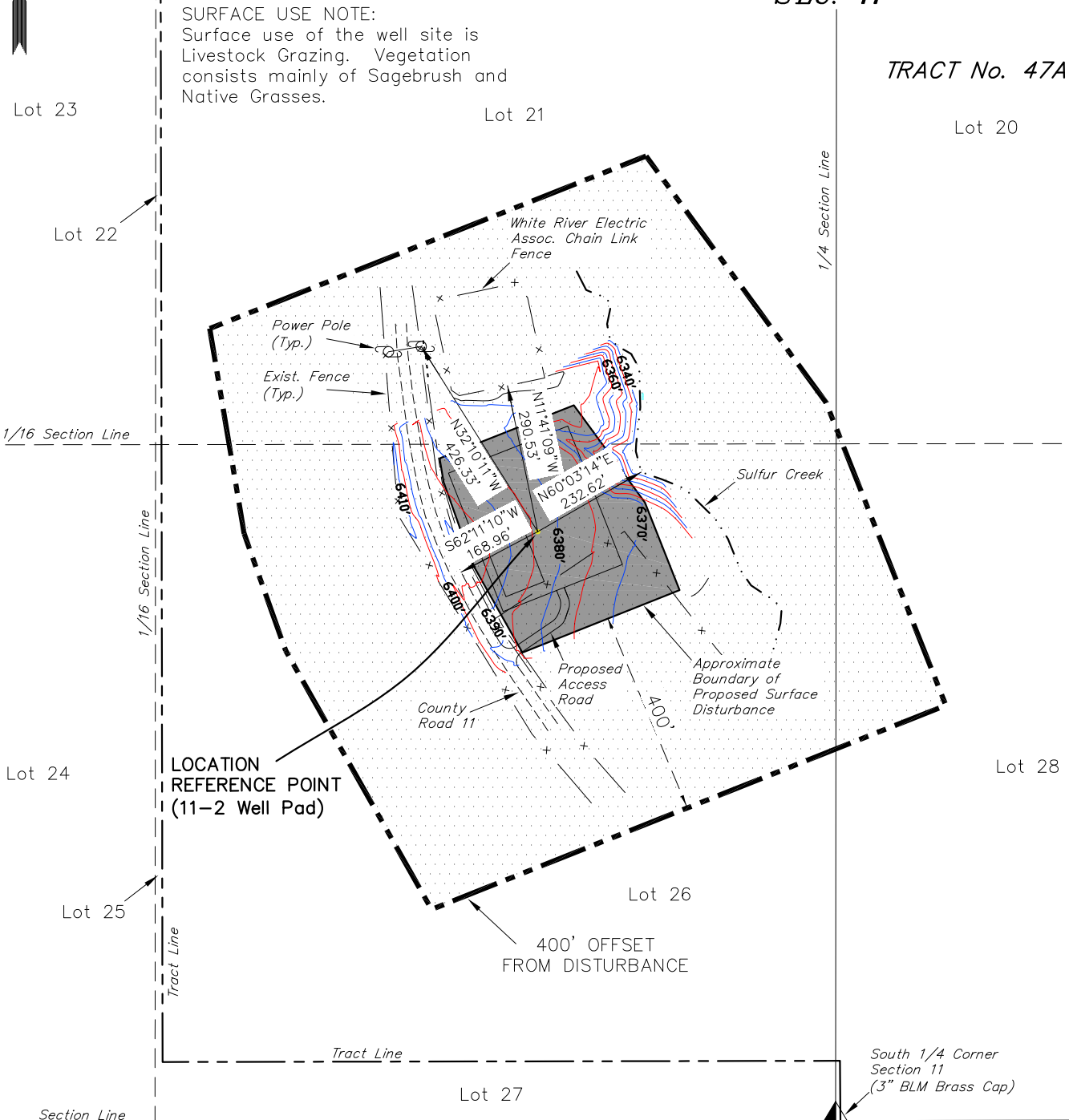
# MATRIX OIL CORPORATION

## LOCATION DRAWING SHERIDAN 11-2

Pad Location: LOT 26 SECTION 11, T1N, R94W, 6th P.M.

SEC. 11

TRACT No. 47A



### Distances from Well Head

WELL	BUILDING	ABOVE GROUND UTILITY	PUBLIC ROAD	RAILROAD
11-2	S2°W 5,570'	N32°W 426'	S62°W 169'	S07°E 38 MILES



SURVEYED BY: S.Y. DATE SURVEYED: 02-24-12  
 DRAWN BY: R.B.T. DATE DRAWN: 02-27-12  
 SCALE: 1" = 300' REVISED:

**Tri State**  
 Land Surveying, Inc.  
 180 NORTH VERNAL AVE. VERNAL, UTAH 84078

(435) 781-2501

SHEET  
1b