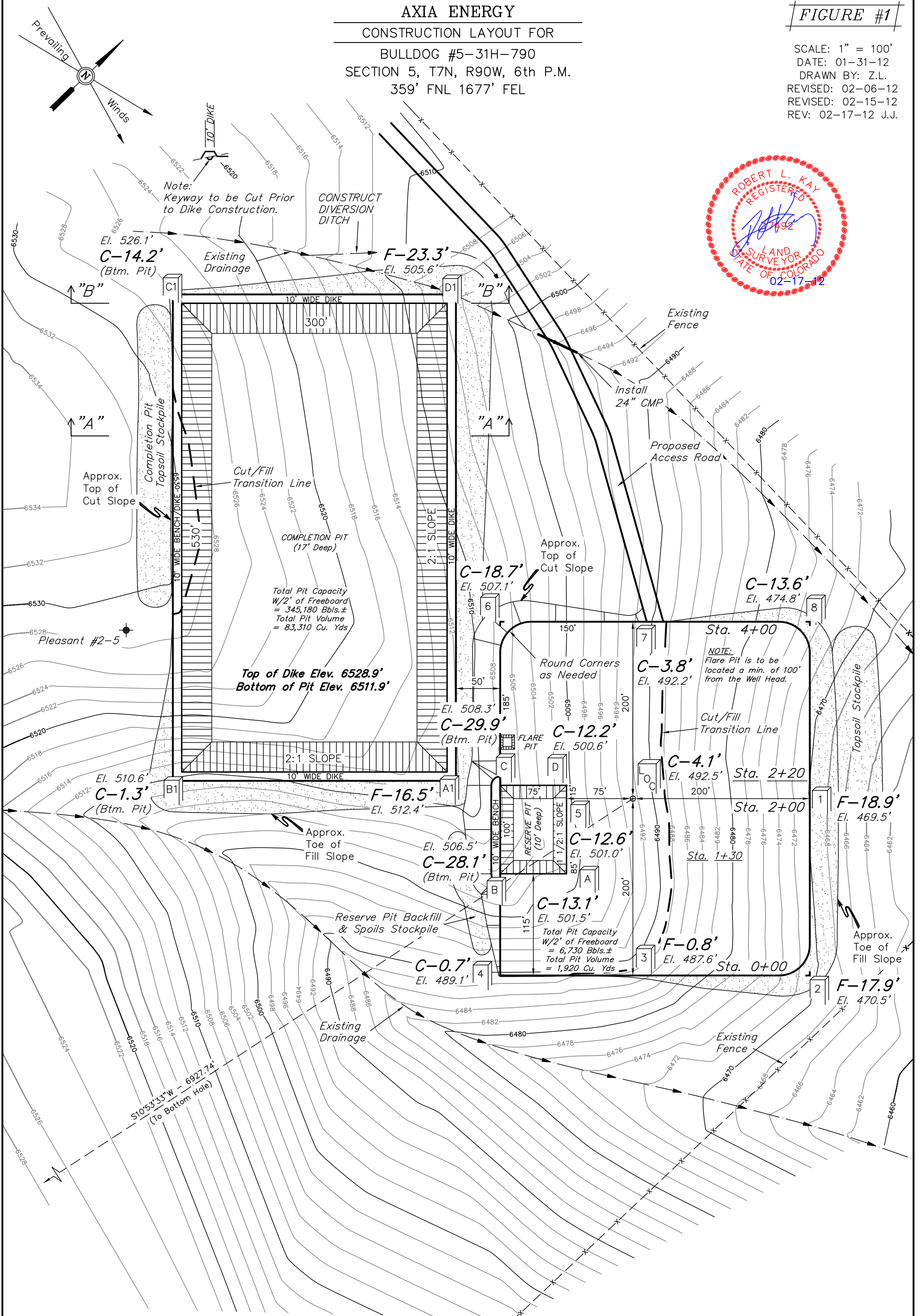


AXIA ENERGY
CONSTRUCTION LAYOUT FOR
BULLDOG #5-31H-790
SECTION 5, T7N, R90W, 6th P.M.
359' FNL 1677' FEL

FIGURE #1

SCALE: 1" = 100'
DATE: 01-31-12
DRAWN BY: Z.L.
REVISED: 02-06-12
REVISED: 02-15-12
REV: 02-17-12 J.J.



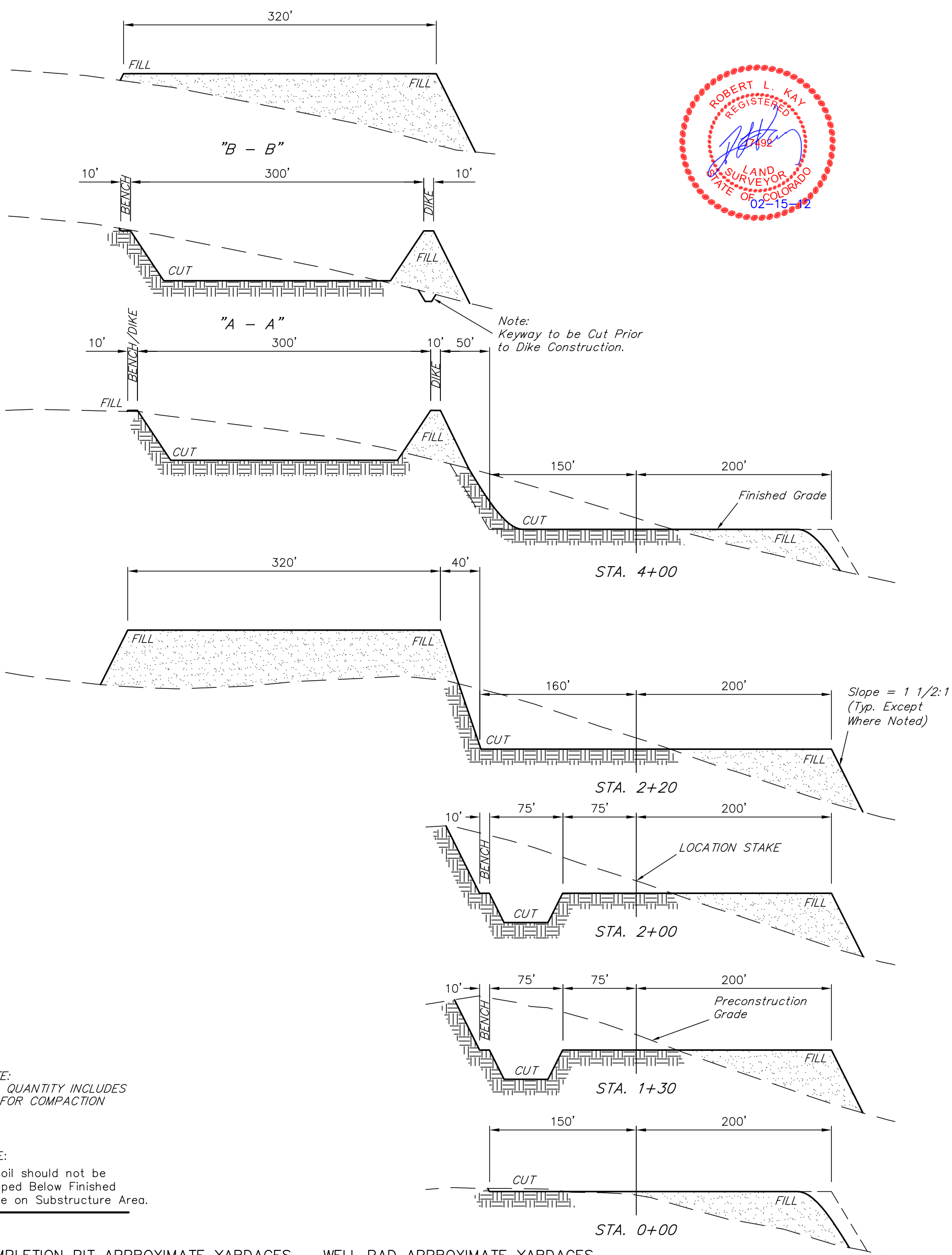
Elev. Ungraded Ground At Loc. Stake = 6492.5'
FINISHED GRADE ELEV. AT LOC. STAKE = 6488.4'

UINTAH ENGINEERING & LAND SURVEYING
85 So. 200 East * Vernal, Utah 84078 * (435) 789-1017

1" = 40'
X-Section
Scale
1" = 100'
DATE: 01-31-12
DRAWN BY: Z.L.
REVISED: 02-15-12

AXIA ENERGY
CONSTRUCTION LAYOUT CROSS SECTIONS FOR
BULLDOG #5-31H-790
SECTION 5, T7N, R90W, 6th P.M.
359' FNL 1677' FEL

FIGURE #2



* NOTE:
FILL QUANTITY INCLUDES
5% FOR COMPACTION

NOTE:
Topsoil should not be
Stripped Below Finished
Grade on Substructure Area.

COMPLETION PIT APPROXIMATE YARDAGES

(6") Topsoil Stripping	=	4,300 Cu. Yds.
Remaining Location	=	34,540 Cu. Yds.
TOTAL CUT	=	38,840 CU.YDS.
FILL	=	34,540 CU.YDS.

EXCESS MATERIAL	=	4,300 Cu. Yds.
Topsoil	=	4,300 Cu. Yds.
EXCESS UNBALANCE (After Interim Rehabilitation)	=	0 Cu. Yds.

WELL PAD APPROXIMATE YARDAGES

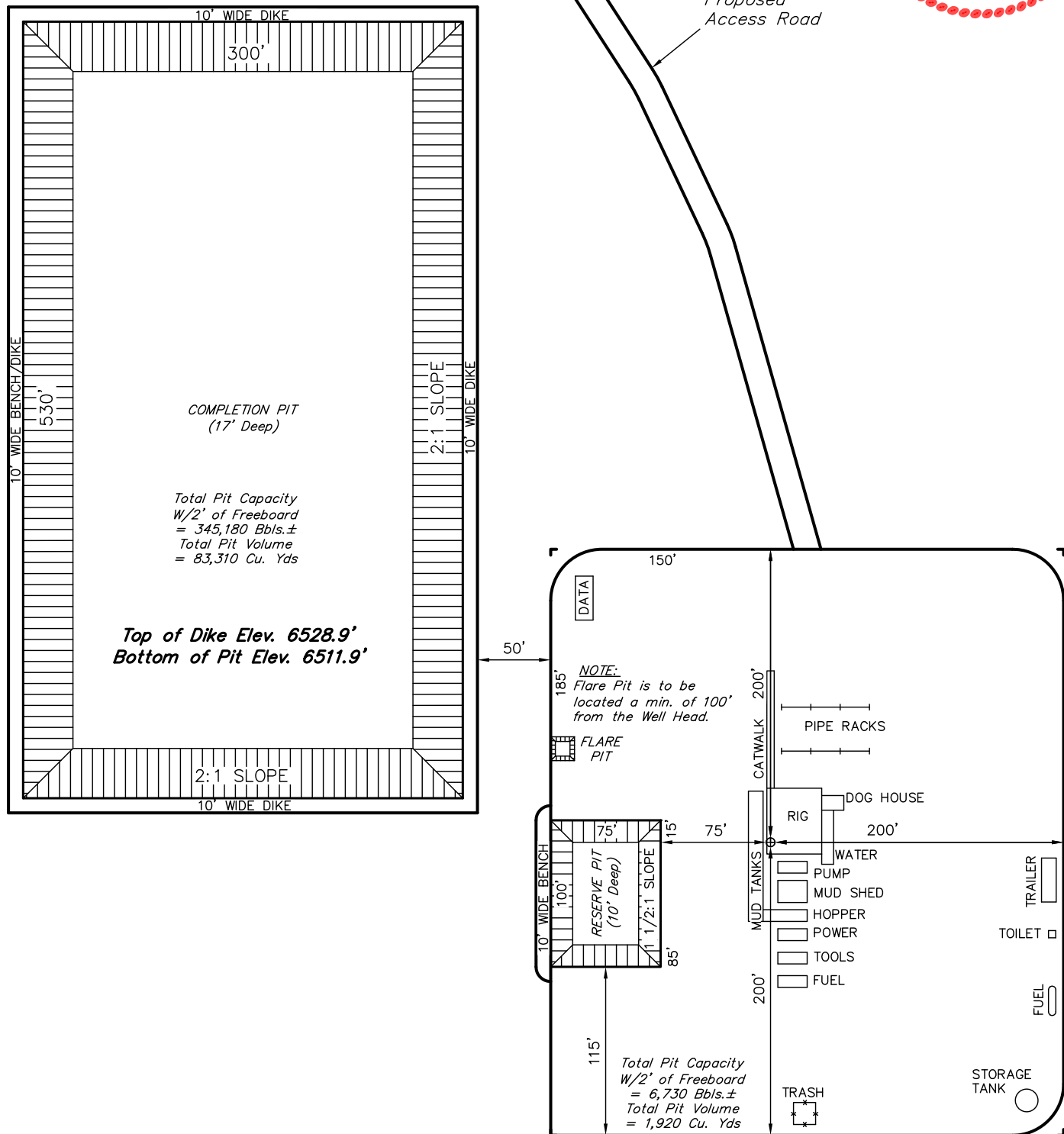
(6") Topsoil Stripping	=	3,310 Cu. Yds.
Remaining Location	=	30,050 Cu. Yds.
TOTAL CUT	=	33,360 CU.YDS.
FILL	=	29,090 CU.YDS.

EXCESS MATERIAL	=	4,270 Cu. Yds.
Topsoil & Pit Backfill (1/2 Pit Vol.)	=	4,270 Cu. Yds.
EXCESS UNBALANCE (After Interim Rehabilitation)	=	0 Cu. Yds.

APPROXIMATE ACREAGES
WELL SITE DISTURBANCE = ± 4.229 ACRES
COMPLETION PIT DISTURBANCE = ± 5.212 ACRES
ACCESS ROAD DISTURBANCE = ± 2.641 ACRES
TOTAL = ± 12.082 ACRES
UINTAH ENGINEERING & LAND SURVEYING
85 So. 200 East * Vernal, Utah 84078 * (435) 789-1017

BULLDOG #5-31H-790
SECTION 5, T7N, R90W, 6th P.M.
359' FNL 1677' FEL

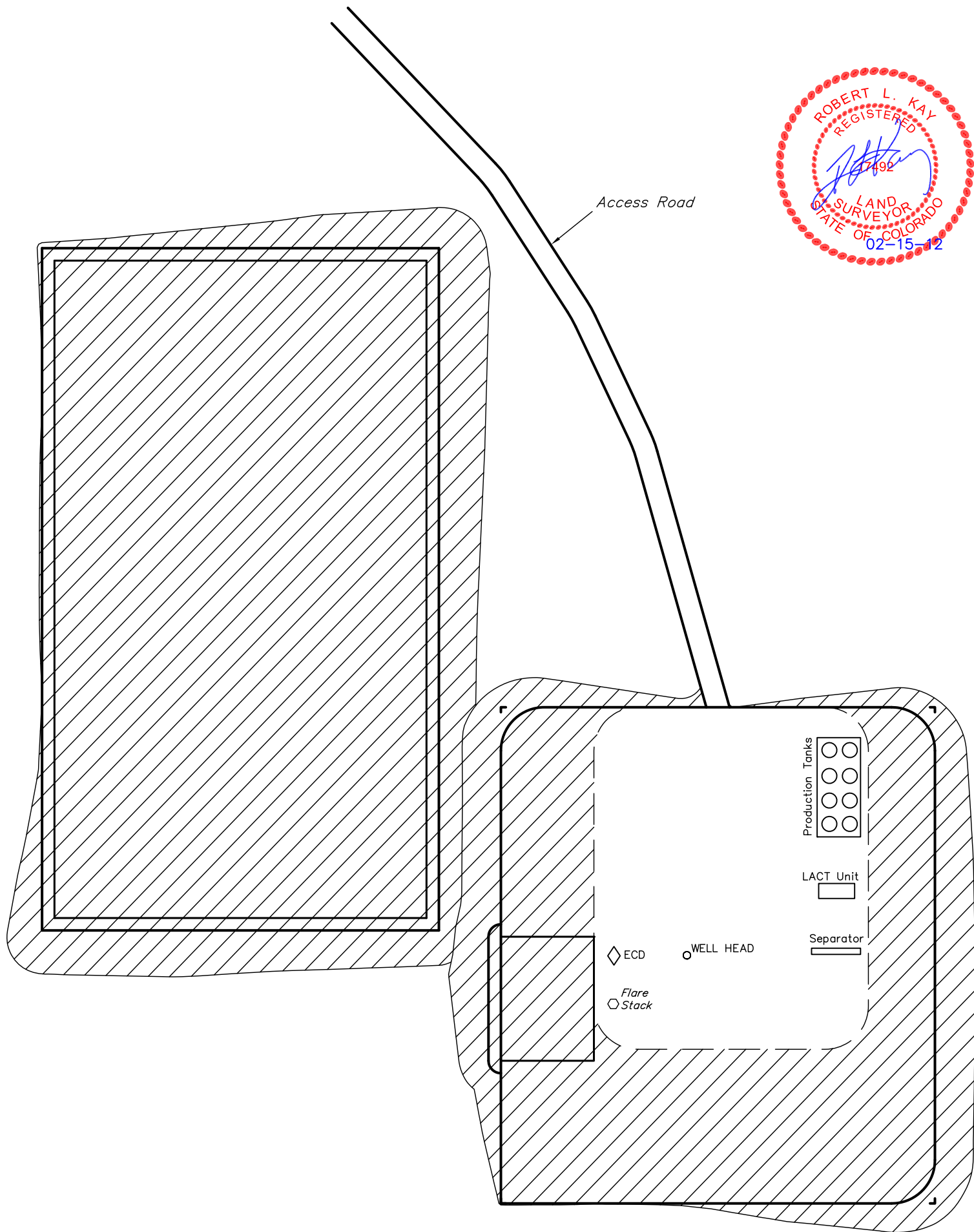
SCALE: 1" = 100'
DATE: 01-31-12
DRAWN BY: Z.L.
REVISED: 02-15-12



AXIA ENERGY
RECLAMATION DIAGRAM FOR
BULLDOG #5-31H-790
SECTION 5, T7N, R90W, 6th P.M.
359' FNL 1677' FEL

FIGURE #4

SCALE: 1" = 100'
DATE: 01-31-12
DRAWN BY: Z.L.
REVISED: 02-15-12



RECLAIMED AREA

APPROXIMATE ACREAGES
UN-RECLAIMED = ± 1.377 ACRES

UINTAH ENGINEERING & LAND SURVEYING
85 So. 200 East * Vernal, Utah 84078 * (435) 789-1017