

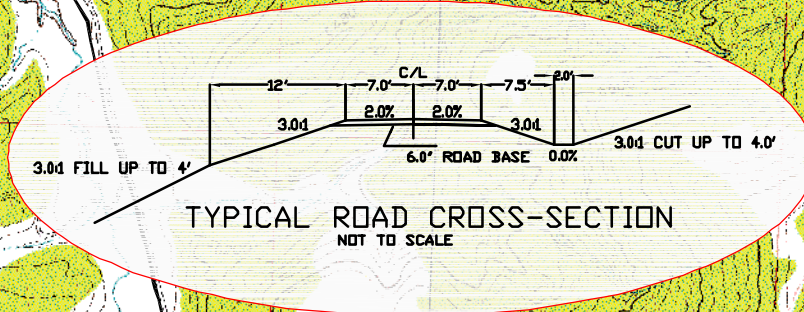
RIO BLANCO CO., CO

**T2N
T1N**

R 100 W

WYATT, O. S., JR.

WYATT, O. S., JR.



**QUADRANGLES
GILLAM DRAW
CALAMITY RIDGE**

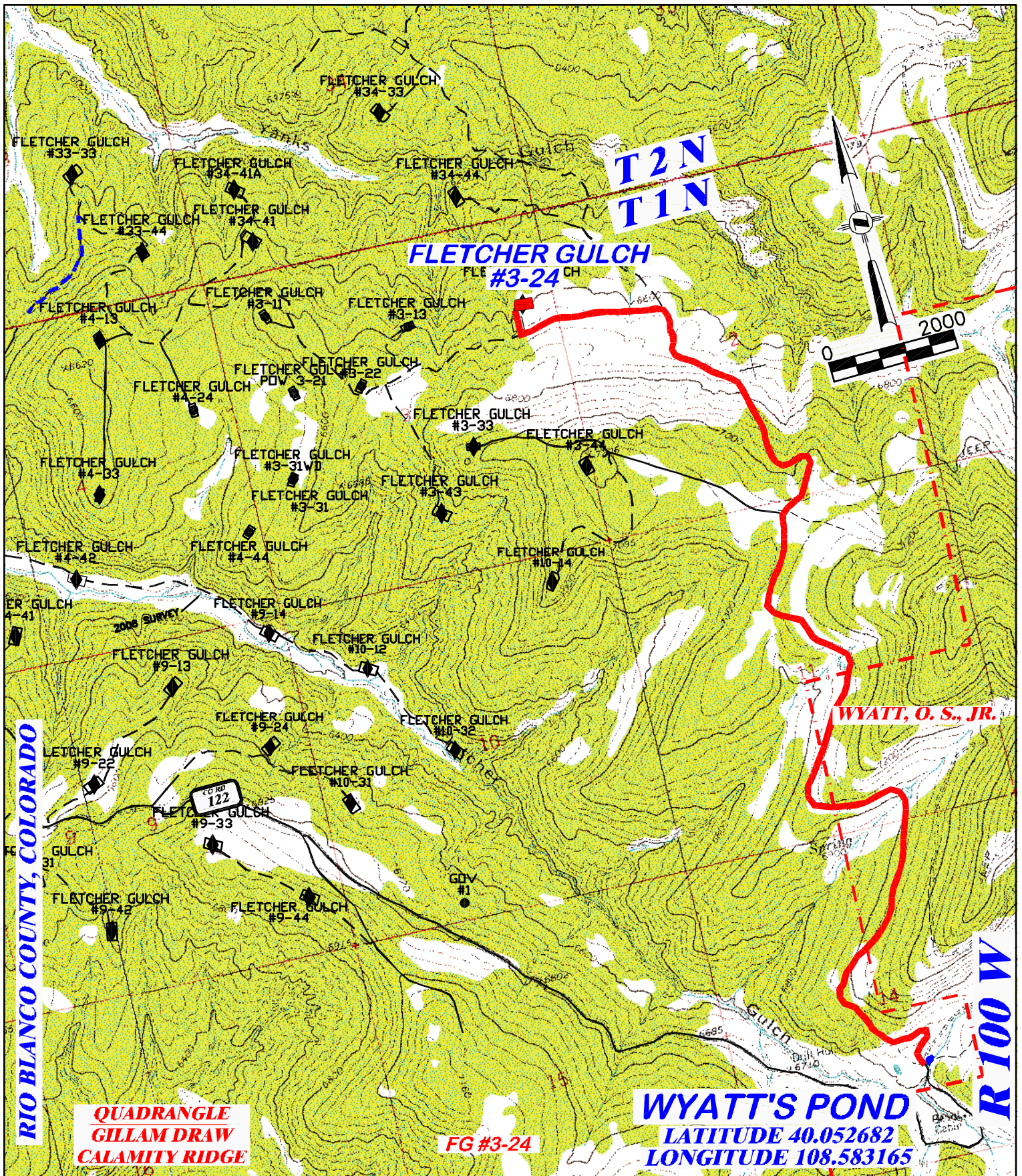
FG #3-24


KEY

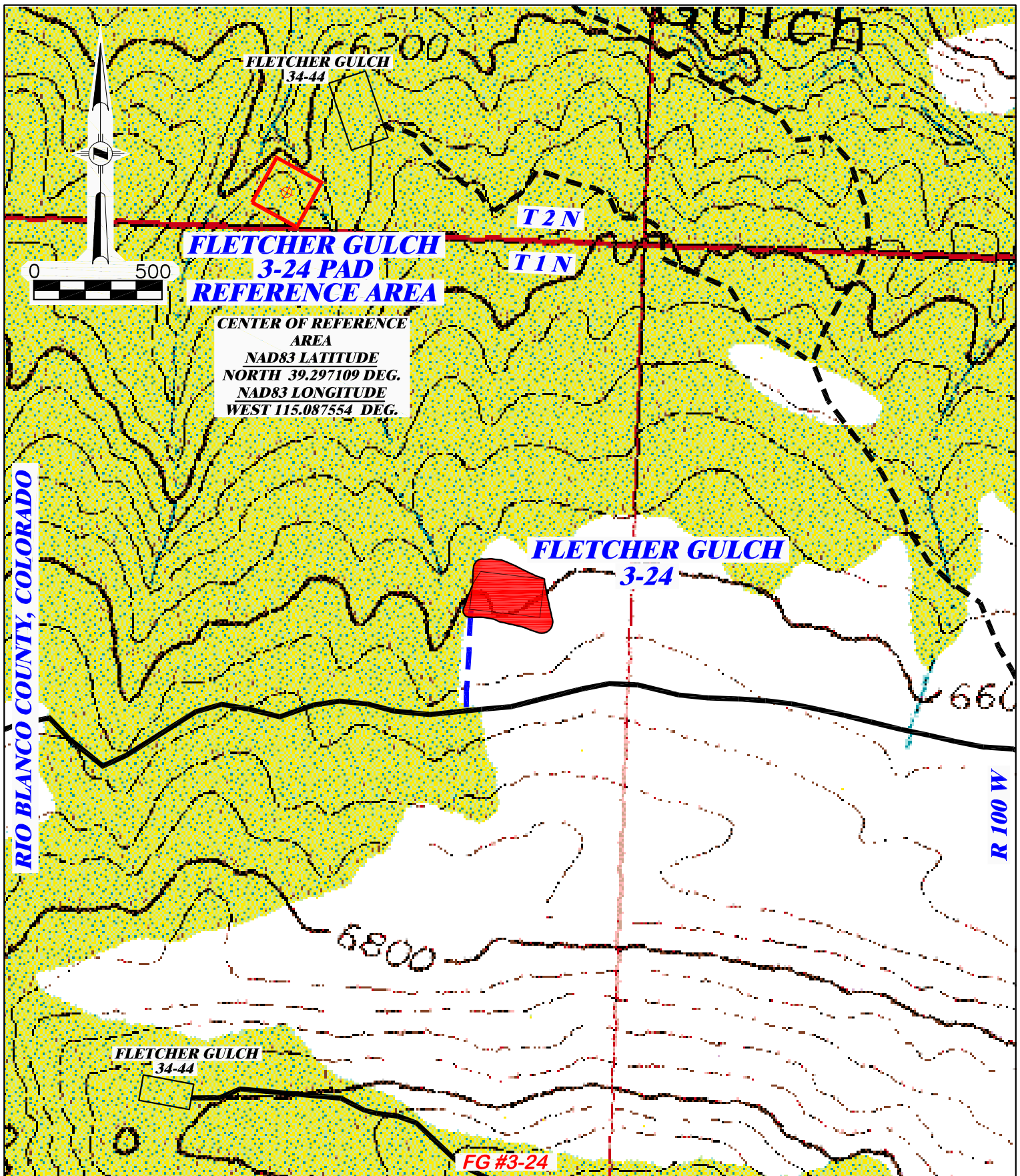
	LOCATIONS WITH PIPELINES IN CENTER OF ROAD
	LOCATIONS WITH PIPELINES IN DITCH BESIDE ROAD

DRG RIFFIN & ASSOCIATES, INC. <small>(307) 362-5028 1414 ELK ST., ROCK SPRINGS, WY 82901</small>	
<small>DRAWN: 5/15/09 - MMM</small>	<small>SCALE: 1" = 2000'</small>
<small>REVISED: 09/14/2011 - CDC</small>	<small>DRG JOB No.: 16505</small>
<small>UPDATE TITLE BLOCK</small>	<small>EXHIBIT 4A</small>

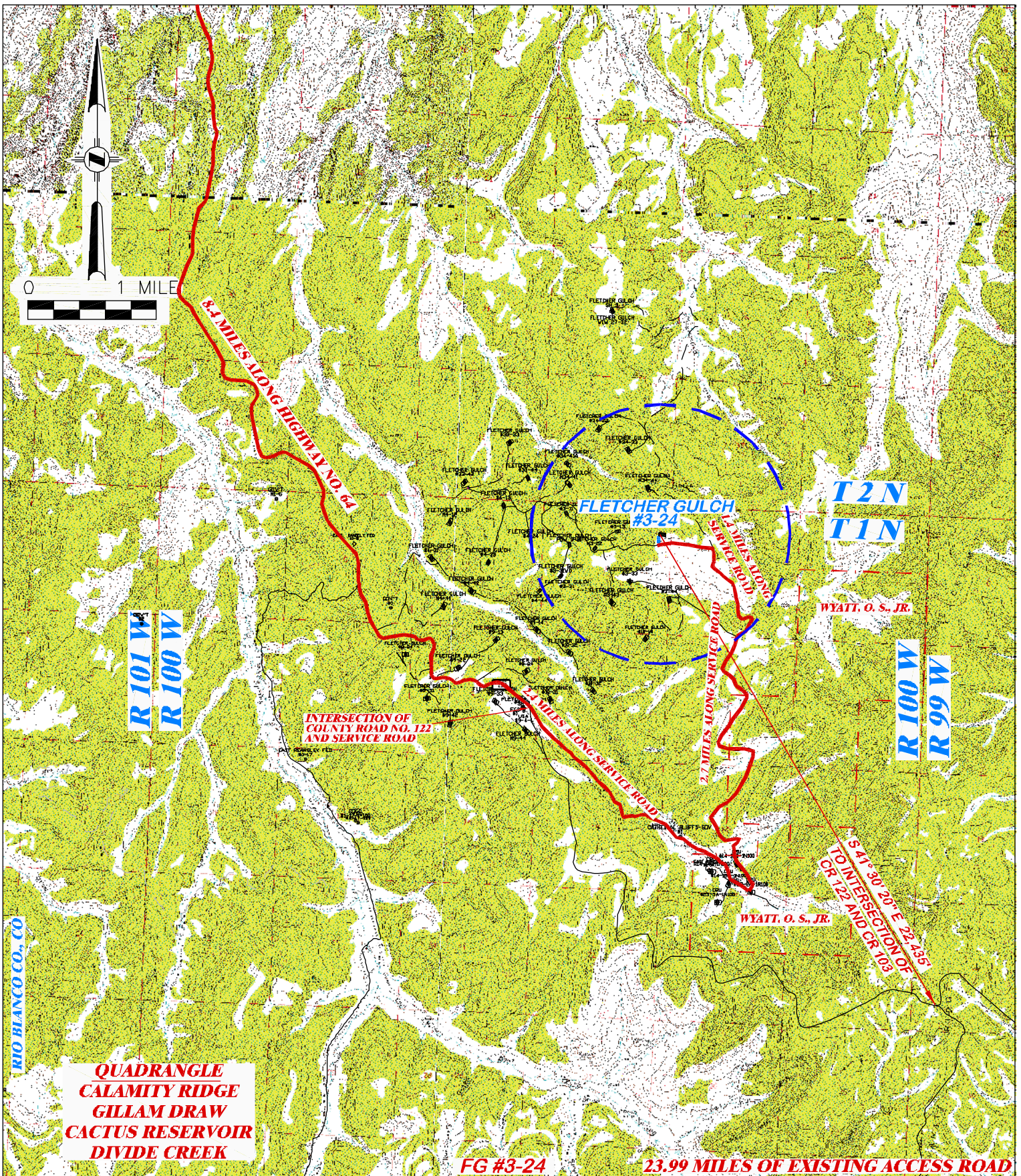
PIPELINE MAP
GENESIS GAS & OIL LLC.
FLETCHER GULCH #3-24
SE1/4 OF NE1/4 SECTION 3,
T1N, R100W, 6th P.M.,
RIO BLANCO COUNTY, COLORADO



 DRG RIFFIN & ASSOCIATES, INC. (307) 362-5028 1414 ELK ST., ROCK SPRINGS, WY 82901		CONSTRUCTION WATER ROUTE GENESIS GAS & OIL LLC. FLETCHER GULCH #3-24 SE1/4 OF NE1/4 SECTION 3, T1N, R100W, 6th P.M., RIO BLANCO COUNTY, COLORADO	
		DRAWN: 09/14/2011 - CDC REVISIONS:	SCALE: 1" = 2000' DRG JOB No.: 16505 EXHIBIT 4B



<p>DRG RIFFIN & ASSOCIATES, INC. (307) 362-5028 1414 ELK ST., ROCK SPRINGS, WY 82901</p>		REFERENCE AREA MAP	
		GENESIS GAS & OIL LLC. FLETCHER GULCH #3-24 SE1/4 OF NE1/4 SECTION 3, T1N, R100W, 6th P.M., RIO BLANCO COUNTY, COLORADO	
DRAWN: 2/21/2012 - RAS	SCALE: 1" = 500'	PROPOSED WELL ROAD — — — EXISTING ROAD —	
REVISED: N/A	DRG JOB No.: 16505		
EXHIBIT 4D			



**QUADRANGLE
CALAMITY RIDGE
GILLAM DRAW
CACTUS RESERVOIR
DIVIDE CREEK**

FG #3-24

23.99 MILES OF EXISTING ACCESS ROAD



DRIFIN & ASSOCIATES, INC.
1414 ELK ST., ROCK SPRINGS, WY 82901

(307) 362-5028

DRAWN: 9/16/08 - MMM

SCALE: 1" = MILE

REVISED: 09/14/2011 - CDC

DRG JOB No. 16505

UPDATED TITLE BLOCK

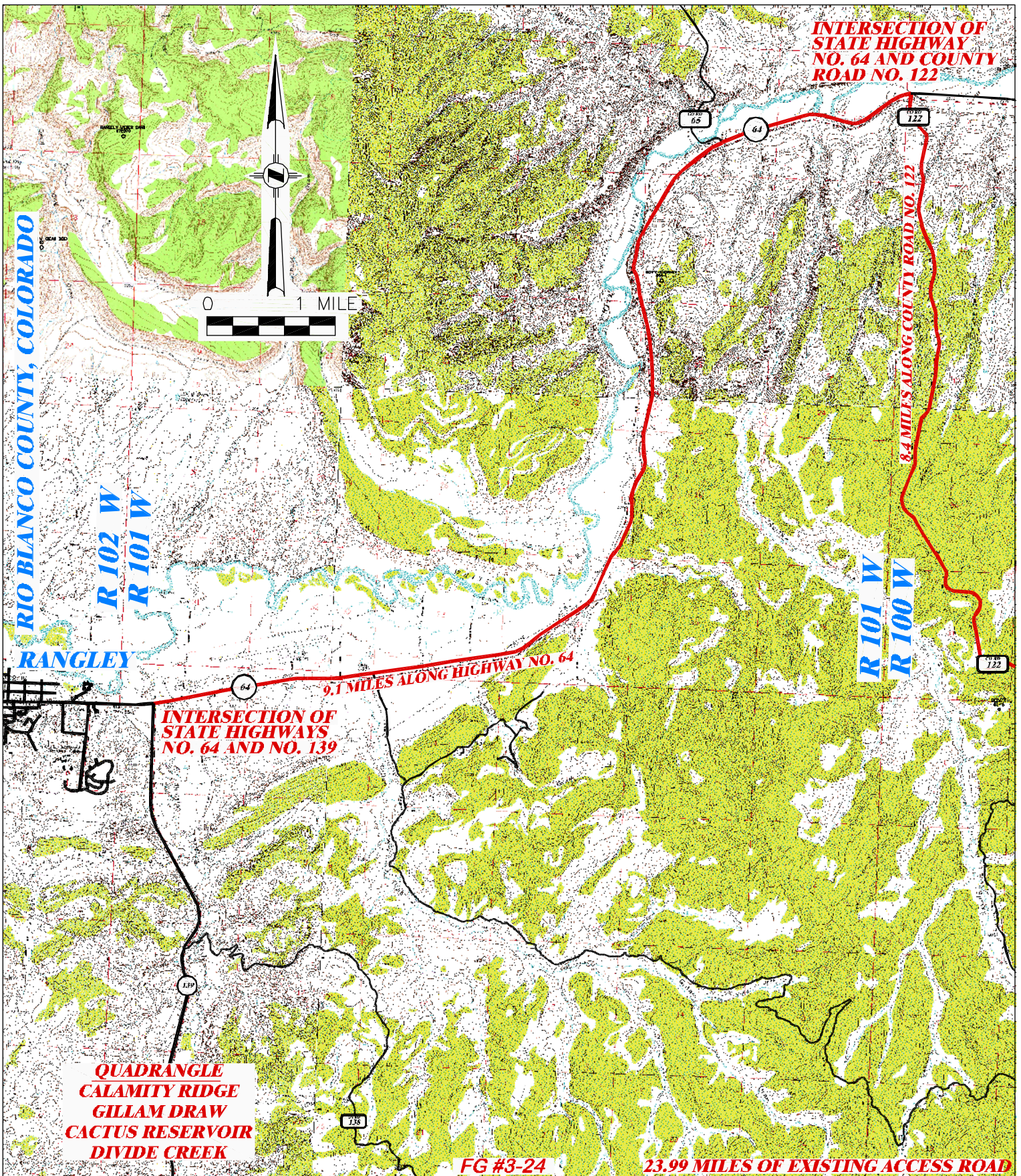
EXHIBIT 5

ACCESS ROAD MAP

**GENESIS GAS & OIL LLC.
FLETCHER GULCH #3-24
SE1/4 OF NE1/4 SECTION 3, T1N, R100W, 6th P.M.,
RIO BLANCO COUNTY, COLORADO**

PROPOSED ROAD — — — —

EXISTING ROAD —————



DRG RIFFIN & ASSOCIATES, INC.
 (307) 362-5028 1414 ELK ST., ROCK SPRINGS, WY 82901

DRAWN: 0/9/14/2011 - CDC

SCALE: 1" = MILE

REVISED:

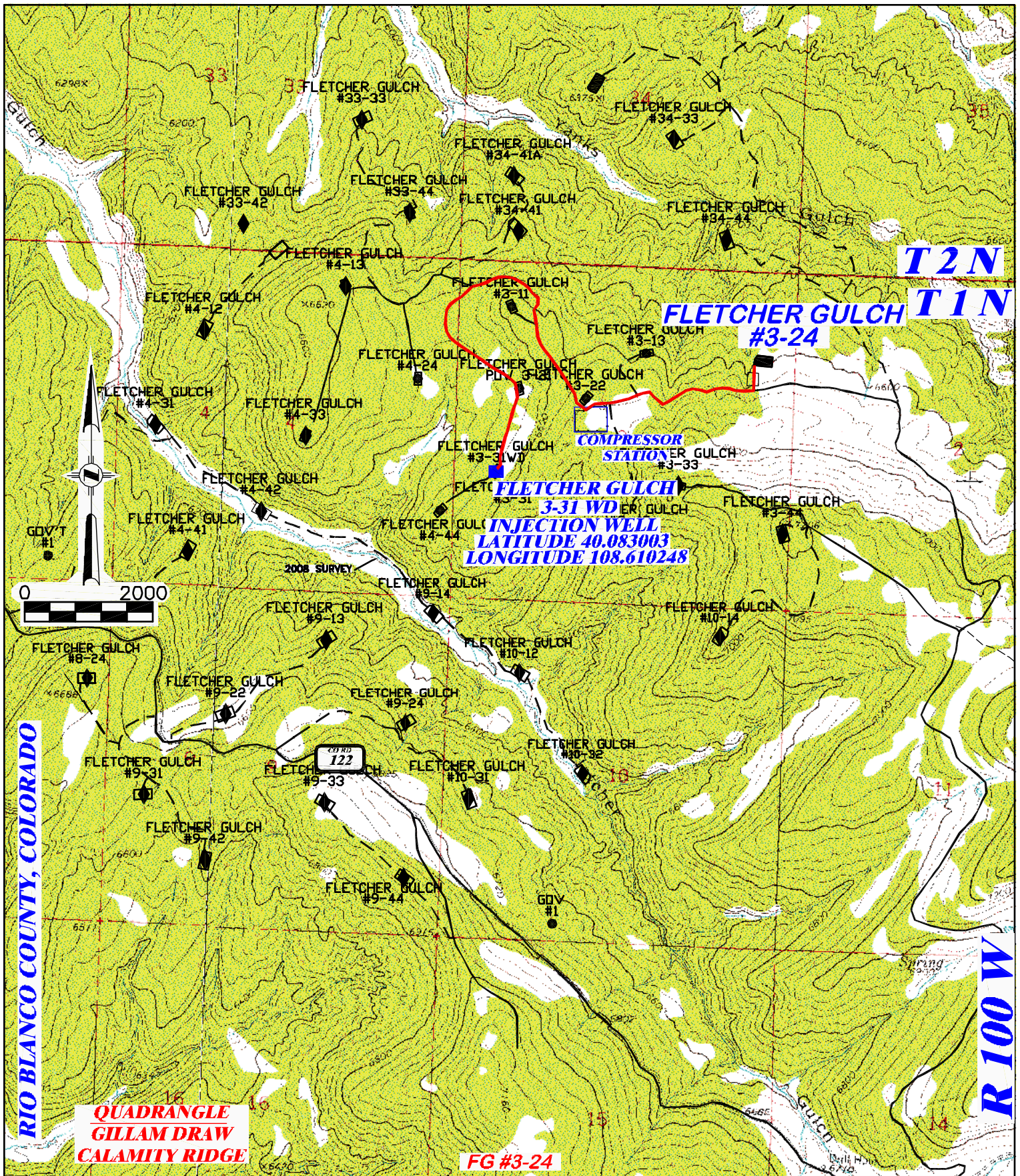
DRG JOB No. 16505

EXHIBIT 5A

ACCESS ROAD MAP

GENESIS GAS & OIL LLC.
FLETCHER GULCH #3-24
SE1/4 OF NE1/4 SECTION 3, T1N, R100W, 6th P.M.,
RIO BLANCO COUNTY, COLORADO

PROPOSED ROAD ——— EXISTING ROAD ———



DRG RIFFIN & ASSOCIATES, INC.
 1414 ELK ST., ROCK SPRINGS, WY 82901

(307) 362-5028

DRAWN: 01/9/14/2011 - CDC

SCALE: 1" = 2000'

REVISED:

DRG JOB No. 16505

EXHIBIT 7

PRODUCED WATER ROUTE

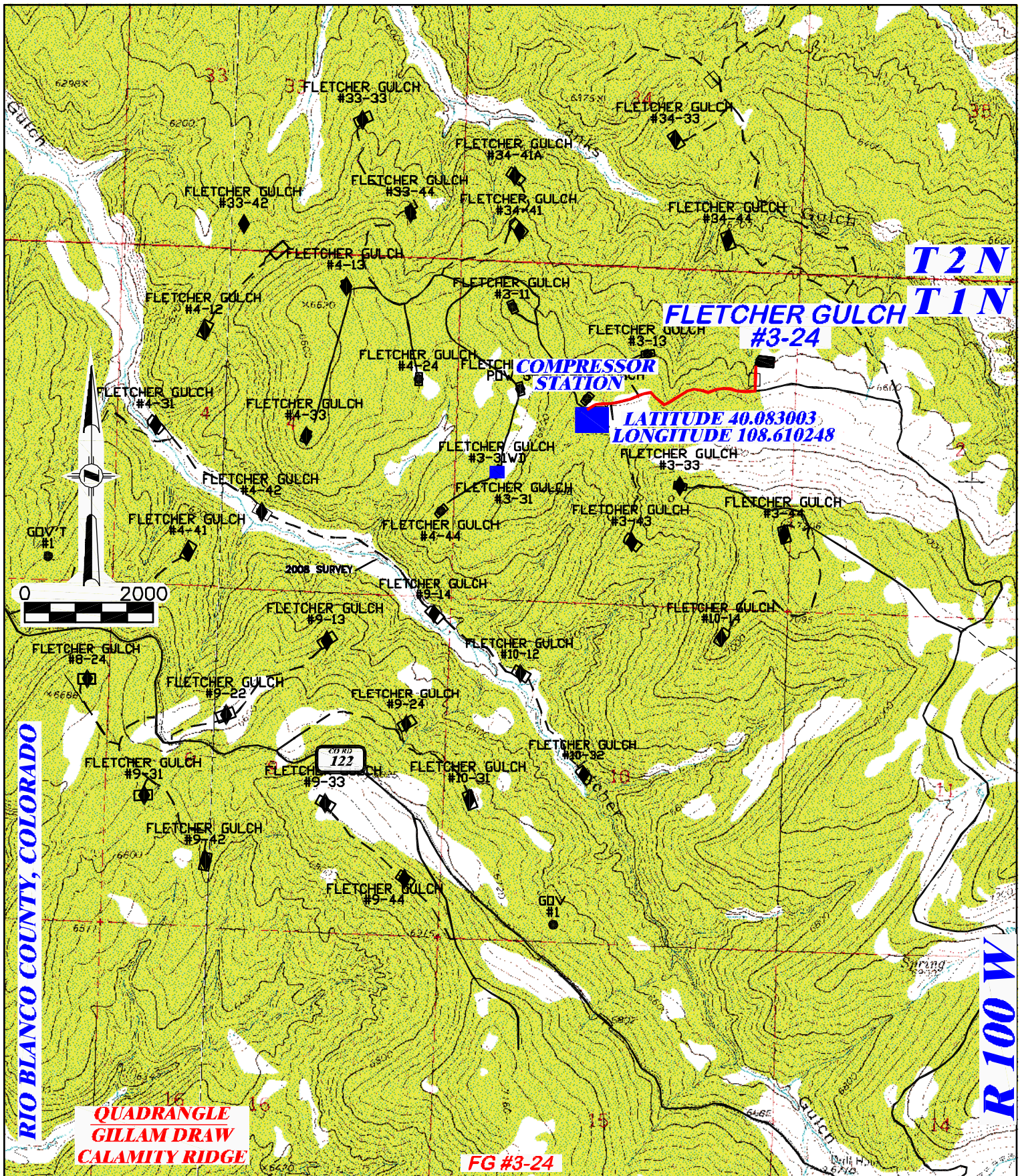
GENESIS GAS & OIL LLC.


FLETCHER GULCH #3-24

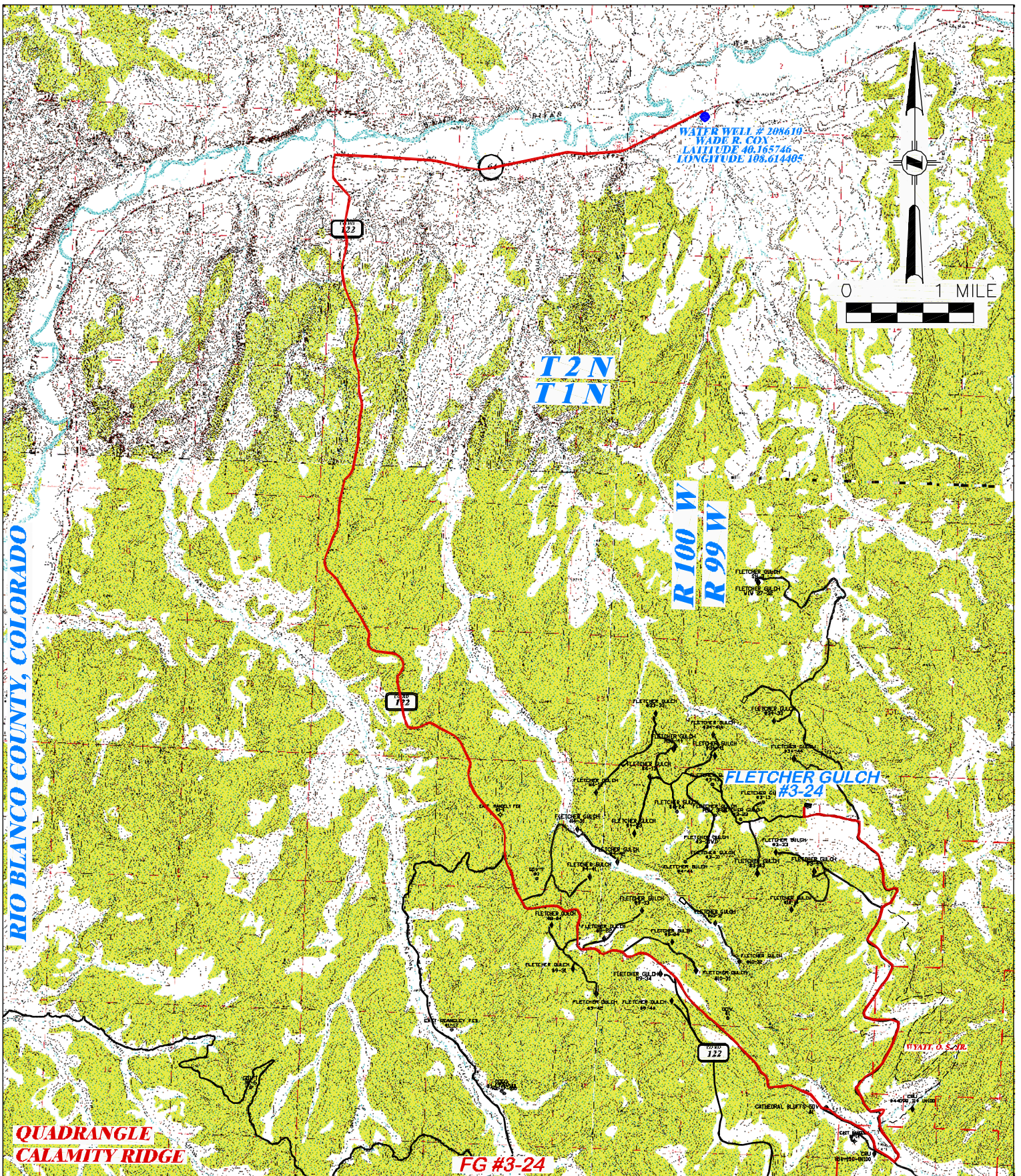
**SE1/4 OF NE1/4 SECTION 3, T1N, R100W, 6th P.M.,
 RIO BLANCO COUNTY, COLORADO**


TOTAL PROPOSED LENGTH: 1.9 MILES ±

PRODUCED WATER ROUTE — EXISTING ROAD —



 DRG RIFFIN & ASSOCIATES, INC. (307) 362-5028 1414 ELK ST., ROCK SPRINGS, WY 82901		PRODUCED WATER ROUTE GENESIS GAS & OIL LLC. FLETCHER GULCH #3-24 SE1/4 OF NE1/4 SECTION 3, T1N, R100W, 6th P.M., RIO BLANCO COUNTY, COLORADO	
		DRAWN: 01/9/14/2011 - CDC REVISED:	SCALE: 1" = 2000' DRG JOB No. 16505 EXHIBIT 8



 DRG RIFFIN & ASSOCIATES, INC. (307) 362-5028 1414 ELK ST., ROCK SPRINGS, WY 82901		SURFACE CASING FRESHWATER GENESIS GAS & OIL LLC. FLETCHER GULCH #3-24 SE1/4 OF NE1/4 SECTION 3, T1N, R100W, 6th P.M., RIO BLANCO COUNTY, COLORADO	
		DRAWN: 0/9/14/2011 - CDC	SCALE: 1" = MILE
REVISED:	DRG JOB No. 16505	PROPOSED ROAD — — — — — EXISTING ROAD —————	
EXHIBIT 9			