

R. 100 W.

N



SCALE 1" = 1000'

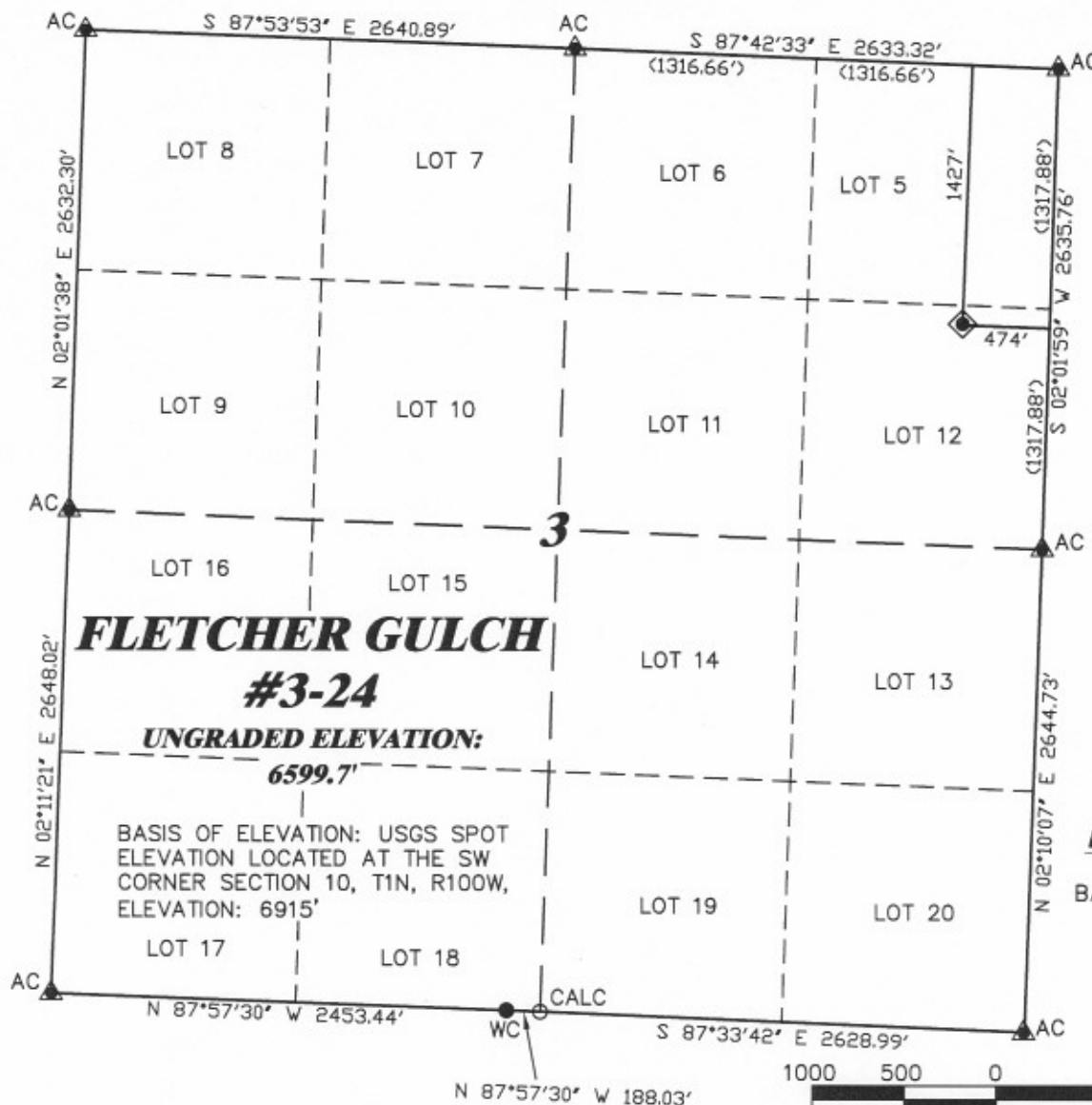
T. 1 N.

LATITUDE (NAD 83)
NORTH 40.088078 DEG.
LONGITUDE (NAD 83)
WEST 108.595611 DEG.

LATITUDE (NAD 27)
NORTH 40.088104 DEG.
LONGITUDE (NAD 27)
WEST 108.594956 DEG.

NORTHING
290046.63
EASTING
1134210.21

BASIS OF BEARING/DATUM
SPCS CO NORTH NAD 27
BASED ON NGS TRIANGULATION
STATION "BOIES"



SURVEYOR'S STATEMENT

I, CLEMENT R. WILLIAMS, OF ROCK SPRINGS, WYOMING, HEREBY STATE: THIS MAP WAS MADE FROM NOTES TAKEN DURING AN ACTUAL FIELD SURVEY DONE UNDER MY DIRECT SUPERVISION ON SEPTEMBER 16, 2008 AND THAT THIS PLAT CORRECTLY SHOWS THE LOCATION OF FLETCHER GULCH #3-24 AS STAKED ON THE GROUND.

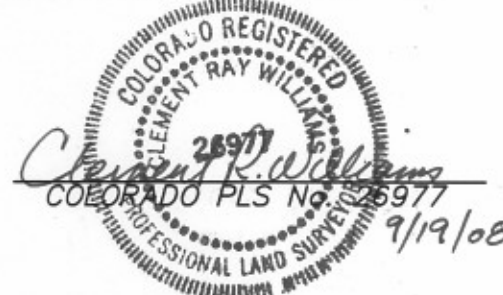
GPS OPERATOR CHRIS HAMILTON
OBSERVED A PDOP OF 2.4.
ALL GPS OBSERVATIONS ARE IN
COMPLIANCE WITH COGCC RULE No.215.

NOTES

HIGH PLATEAU DESERT
NO EXISTING FEATURES WITHIN
200' RADIUS OF WELL SITE.

LEGEND

- ◆ WELL LOCATION
- CALCULATED CORNER
- FOUND MONUMENT
- ▲ PREVIOUSLY FOUND MONUMENT



DRG RIFFIN & ASSOCIATES, INC.
1414 ELK ST., ROCK SPRINGS, WY 82901

DRAWN: 9/19/08 - MMM

SCALE: 1" = 1000'

REVISED: NA

DRG JOB No. 16505

EXHIBIT 1

**PLAT OF DRILLING LOCATION
FOR
GENESIS GAS & OIL LLC.**

**1427' F/NL & 474' F/EL, SECTION 3,
T. 1 N., R. 100 W., 6th P.M.
RIO BLANCO COUNTY, COLORADO**