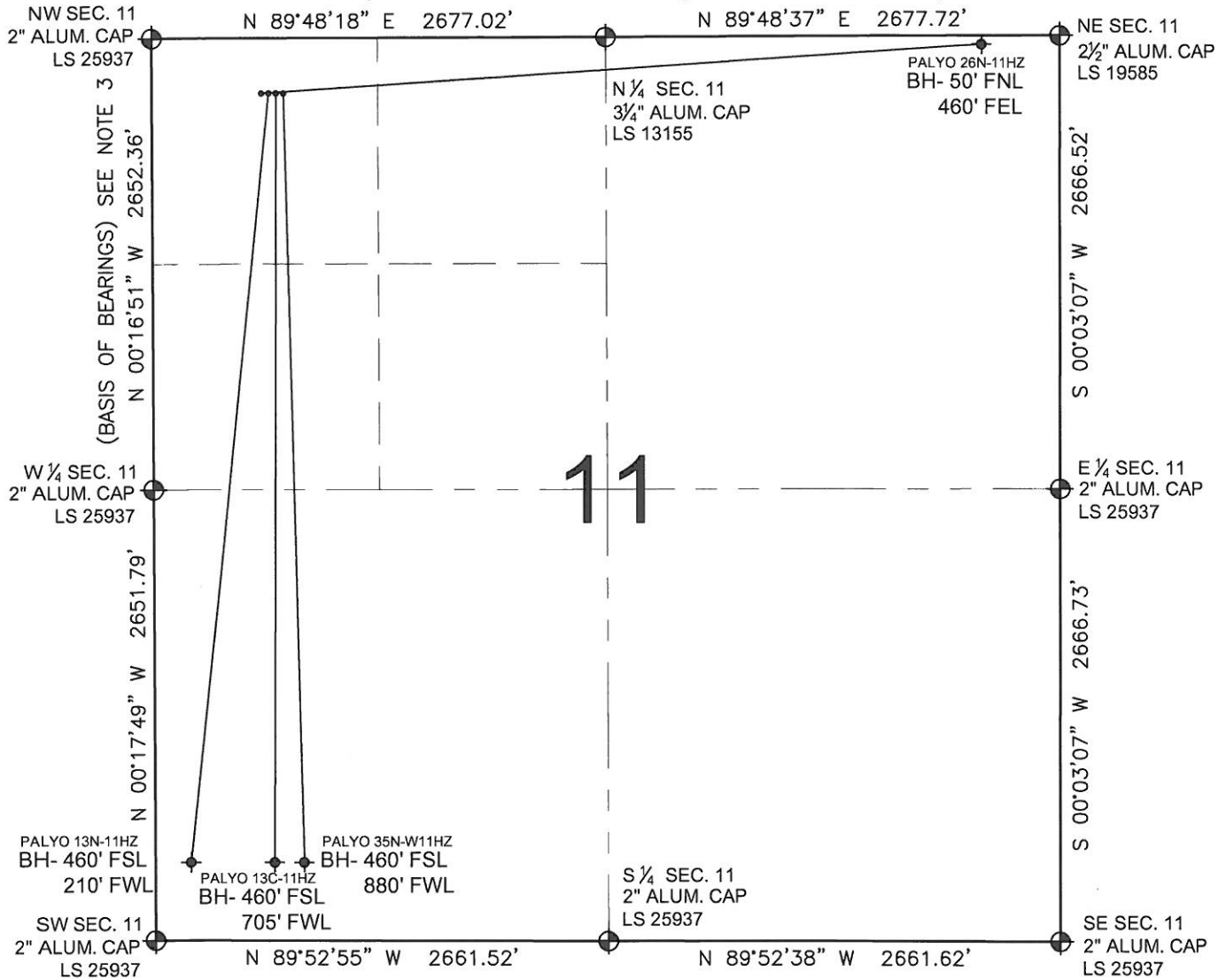


PAD DRAWING: PALYO 4 PAD

SECTION 11, TOWNSHIP 2 NORTH, RANGE 65 WEST, 6TH P.M.



LEGEND

- = EXISTING MONUMENT
 = BOTTOM HOLE
 BH= BOTTOM HOLE
 = PROPOSED WELL
 = EXISTING WELL

NOTES:

- THIS FIELD SURVEY CONFORMS TO THE MINIMUM STANDARDS SET BY THE C.O.G.C.C., RULE NO. 215
- HORIZONTAL POSITIONS AND ORTHOMETRIC ELEVATIONS SHOWN AT THE WELL HEAD, ARE BASED ON GPS-RTK POSITIONS DERIVED FROM MINIMUM 2-HOUR STATIC OBSERVATIONS CORRECTED BY THE NATIONAL GEODETIC SURVEY ONLINE POSITIONING USER SERVICE, O.P.U.S. DATUM: HORIZONTAL = NAD83/2007, VERTICAL = NAVD88
- THE BASIS OF BEARINGS ARE STATE PLANE COORDINATE SYSTEM GRID BEARINGS SHOWN HEREON BETWEEN THE DESCRIBED THE MONUMENTS SHOWN HEREON.
- GRID DISTANCES ARE SHOWN, AS MEASURED IN THE FIELD, WITH TIES TO WELLS MEASURED PERPENDICULAR TO SECTION LINES.

NOTES:

- PALYO 26N-11HZ TO BE AT 324' FNL, 676' FWL.
 BOTTOM HOLE AT 50' FNL & 460' FEL.
 PALYO 13N-11HZ TO BE AT 324' FNL, 706' FWL.
 BOTTOM HOLE AT 460' FSL & 210' FWL.
 PALYO 13C-11HZ TO BE AT 324' FNL, 736' FWL.
 BOTTOM HOLE AT 460' FSL & 705' FWL.
 PALYO 35N-W11HZ TO BE AT 324' FNL, 766' FWL.
 BOTTOM HOLE AT 460' FSL & 880' FWL.

PREPARED BY:

PFS

Petroleum Field Services, LLC
1801 W. 13th Ave.
Denver, CO 80204



KERR-MCGEE OIL & GAS ONSHORE LP

FIELD DATE:

12-01-11

PAD NAME:

PALYO 4 PAD

DRAWING DATE:

12-08-11

SURFACE LOCATION:

WELD COUNTY, COLORADO

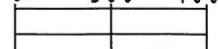
BY:

SMF

NW 1/4 NW 1/4, SEC. 11, T2N, R65W, 6TH P.M.



0 500 1000



SCALE: 1"=1000'