



Mesa Wireline

CEMENT BOND LOG

Company	ENCANA OIL & GAS (USA) INC
Well	MARTINSON 3-24
Field	WATTENBERG
County	WELD
State	COLORADO
Location:	APL #: 05-123-32228-0000
SHL: 1328' FNL & 1230' FWL NWSW	Other Services
SEC. 24 TWP. 4N RGE. 68W	NONE
Permanent Datum	GROUNDLEVEL Elevation 4741'
Log Measured From	KELLY BUSHING = 12'
Drilling Measured From	KELLY BUSHING
Elevation	K.B. 4753' D.F. 4752' G.L. 4741'

Date	18 JANUARY 2012					
Run Number	ONE					
Depth Driller	7860'					
Depth Logger	7804'					
Bottom Logged Interval	7804'					
Top Log Interval	3800'					
Open Hole Size	7.875"					
Type Fluid	WATER					
Density / Viscosity	~8.3#					
Max. Recorded Temp.	261 DEGF					
Estimated Cement Top	4020'					
Time Well Ready	N/A					
Time Logger on Bottom	N/A					
Equipment Number	19701/PRB001					
Location	AULT CO					
Recorded By	V.FULLER					
Witnessed By	TOM MAJORS					
Borehole Record			Tubing Record			
Run Number	Bit	From	To	Size	Weight	From To
ONE	12.25"	0"	UNK			
TWO	7.875"	UNK	7860'			
Casing Record	Size		Wgt/Ft		Top	Bottom
Surface String	8.625"		24#		0'	542'
Prot. String						
Production String	4.5"		11.6#		0'	UNK
Liner						

<<< Fold Here >>>

All interpretations are opinions based on inferences from electrical or other measurements and we cannot and do not guarantee the accuracy or correctness of any interpretation, and we shall not, except in the case of gross or willful negligence on our part, be liable or responsible for any loss, costs, damages, or expenses incurred or sustained by anyone resulting from any interpretation made by any of our officers, agents or employees. These interpretations are also subject to our general terms and conditions set out in our current Price Schedule.

Comments

LOG CORRELATED TO PSI HIGH RESOLUTION INDUCTION LOG DATED JANUARY 16 2012
SHORT JOINT 6790' - 6813'

WE APPRECIATE YOUR BUSINESS, MESA WIRELINE LLC, GRAND JUNCTION CO. (970) 257-0458



TOP PASS

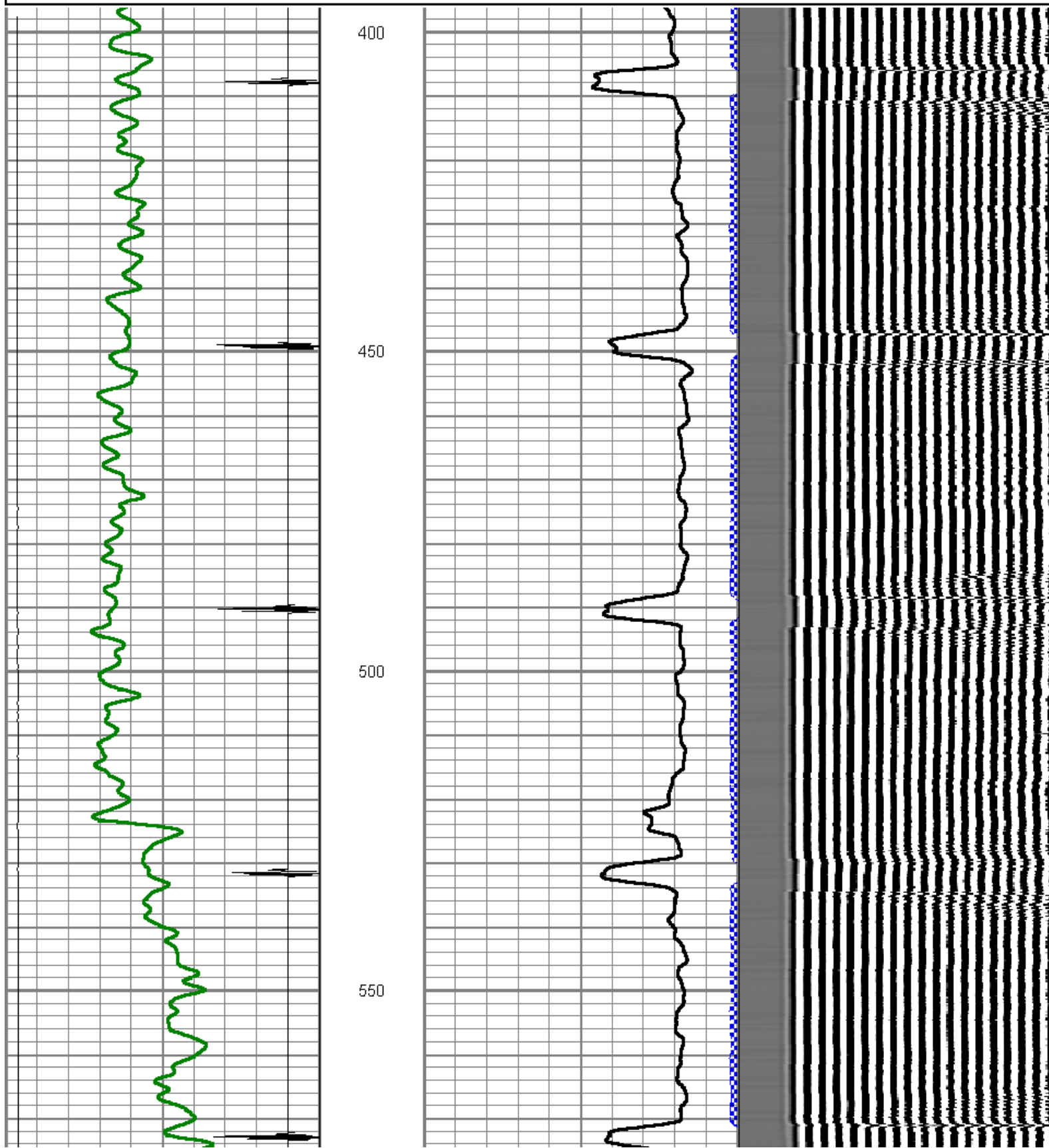
5" = 100'

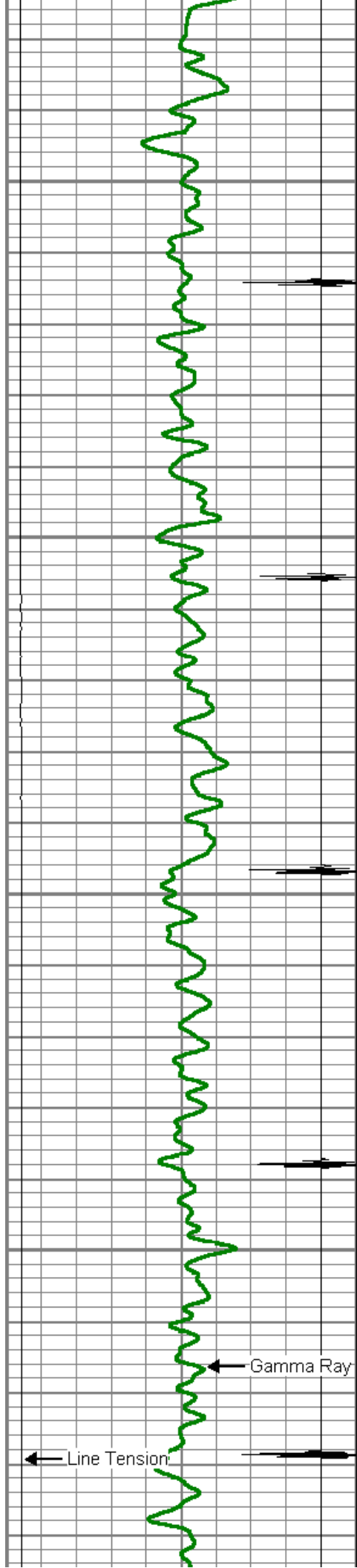
Mesa Wireline

Database File: martinson 3-24.db
Dataset Pathname: pass8
Presentation Format: dcbl_prb
Dataset Creation: Wed Jan 18 12:20:07 2012 by Log SCH 110722
Charted by: Depth in Feet scaled 1:240

0	Gamma Ray (GAPI)	200
0	LTEN (lb)	5000
9	CCL	-1

0	Amplified Amplitude (mV)	20	200	Variable Density	1200
0	Amplitude (mV)	100			
0	TT3 (usec)	280			





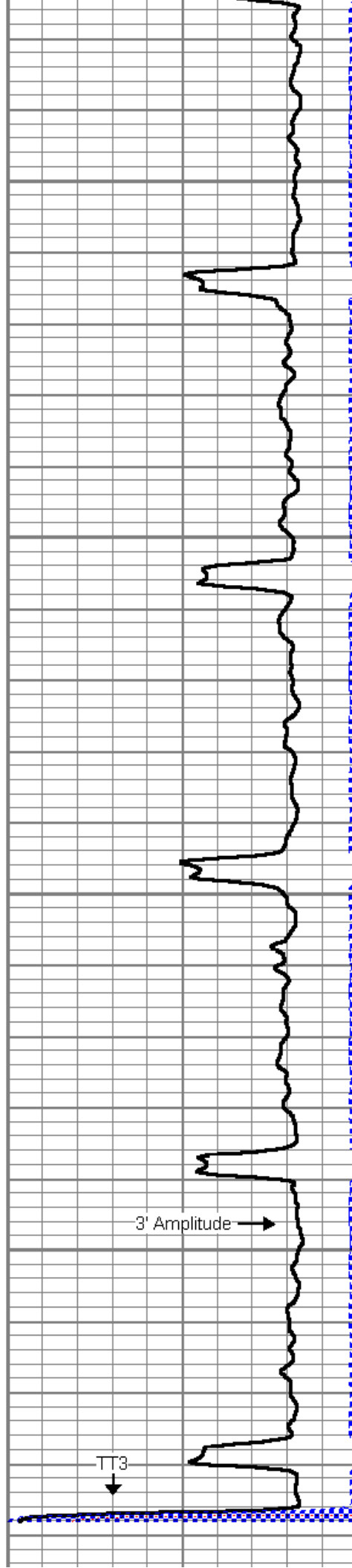
600

650

700

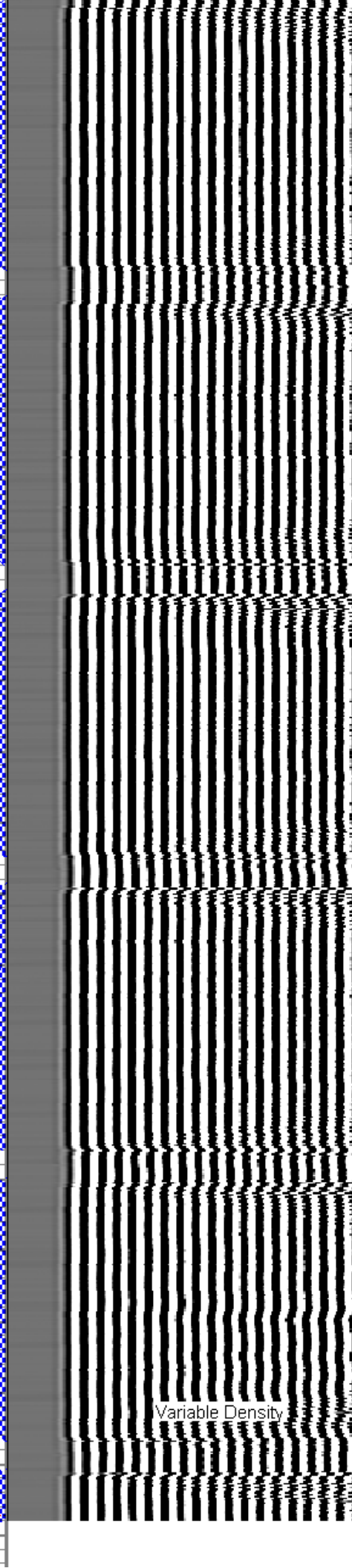
750

← CCL

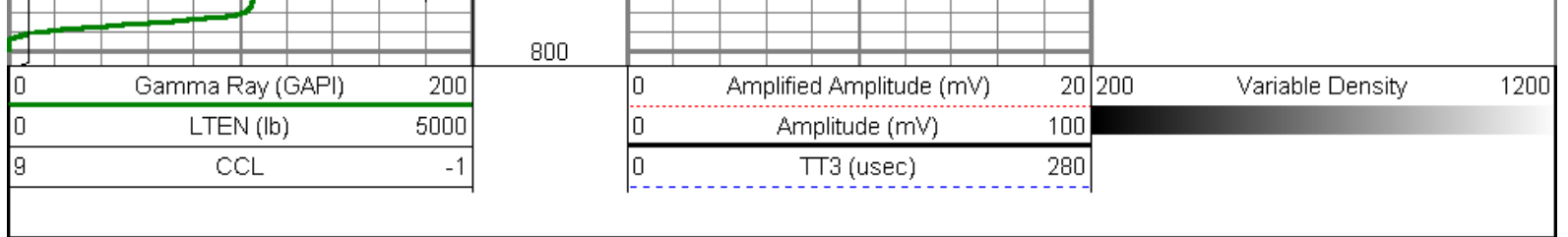


3' Amplitude →

TT3



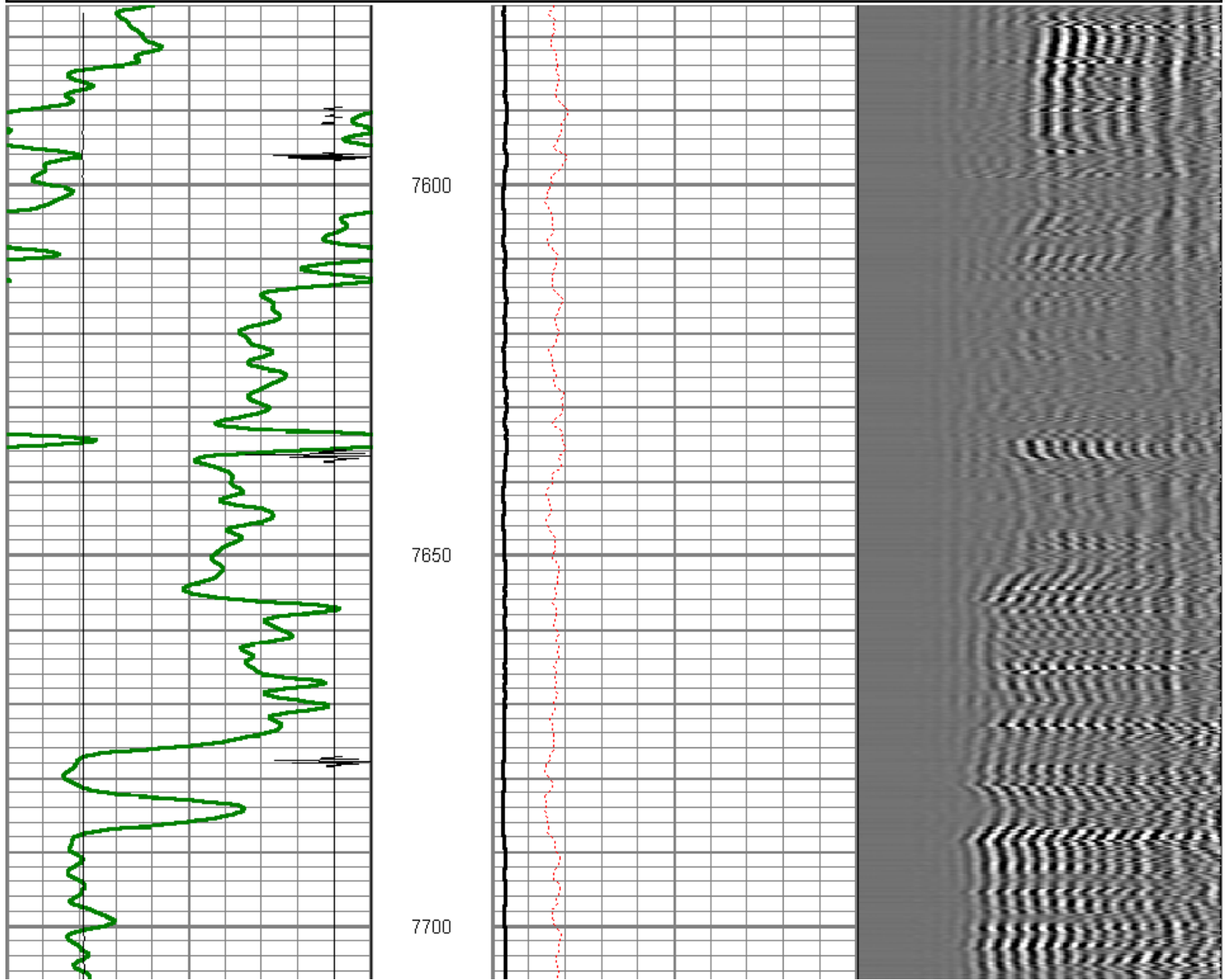
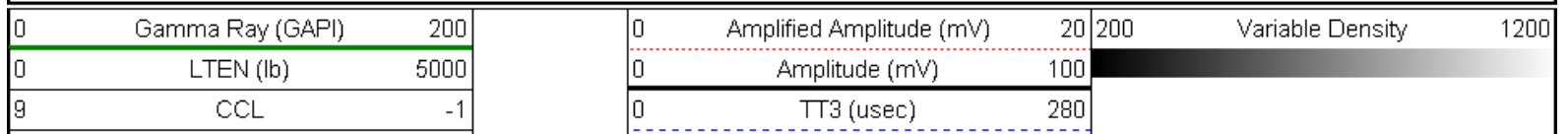
Variable Density

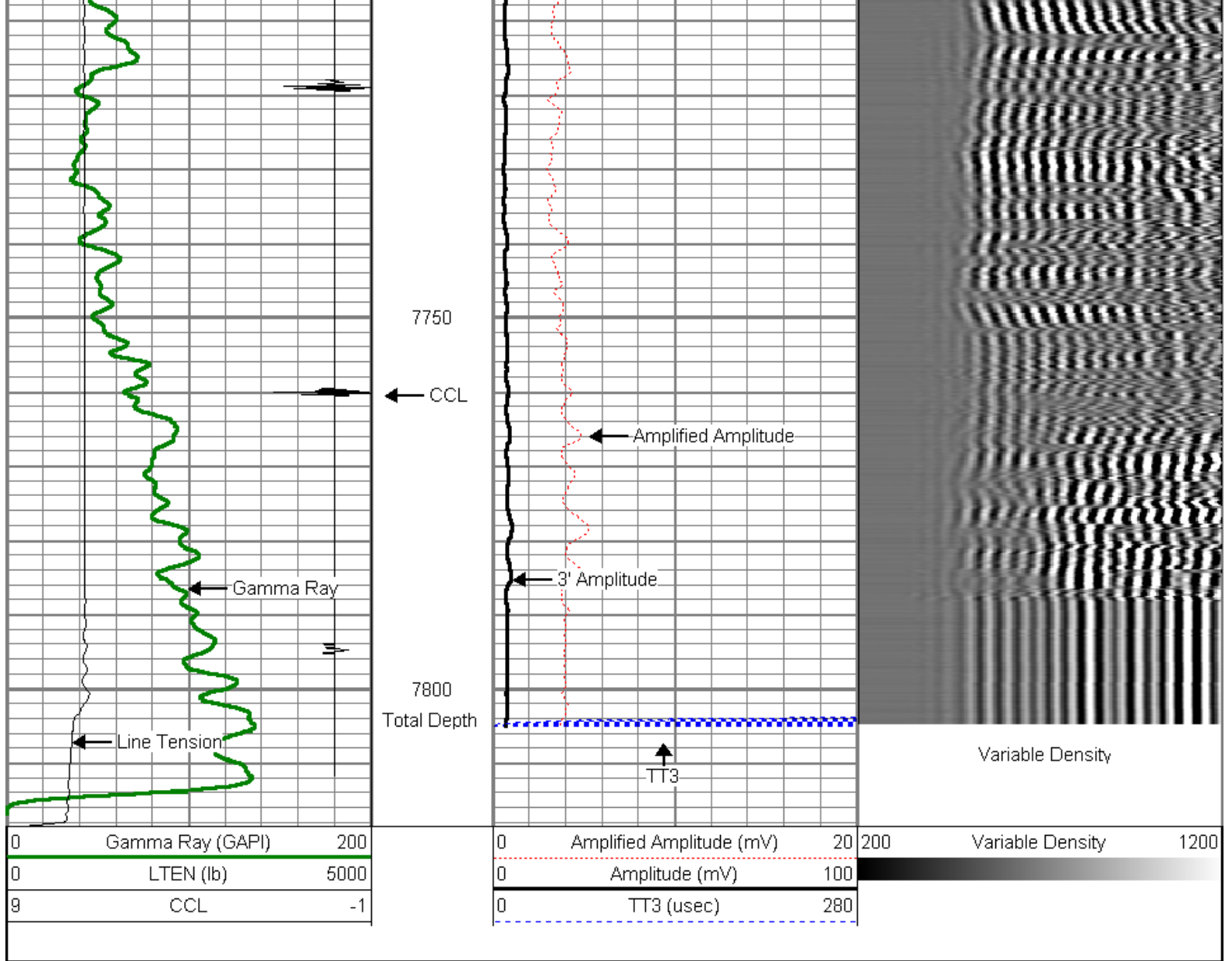


REPEAT PASS

5" = 100'

Database File: martinson 3-24.db
 Dataset Pathname: pass5
 Presentation Format: dcbl_prb
 Dataset Creation: Wed Jan 18 10:55:44 2012 by Log SCH 110722
 Charted by: Depth in Feet scaled 1:240

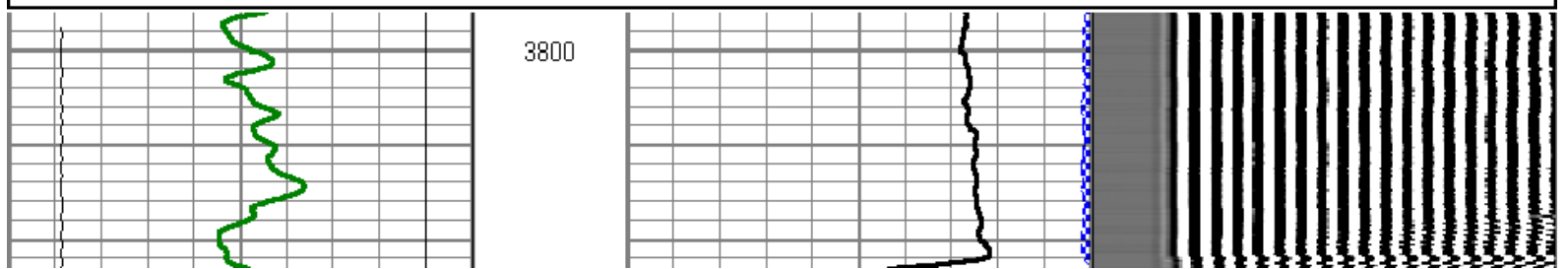
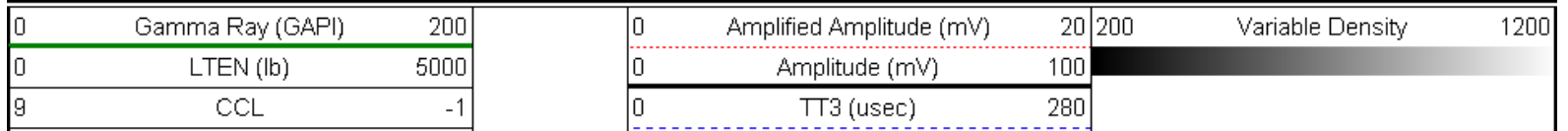


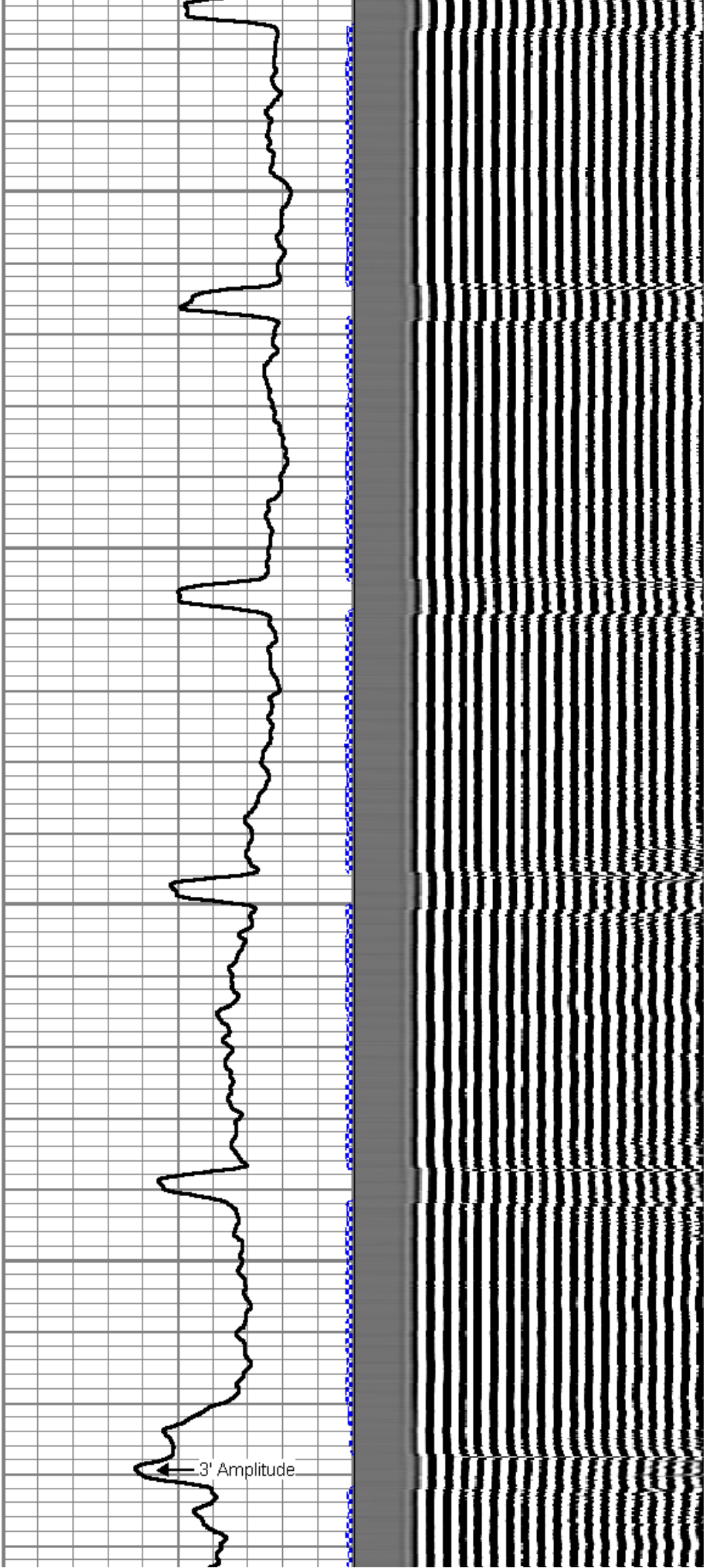
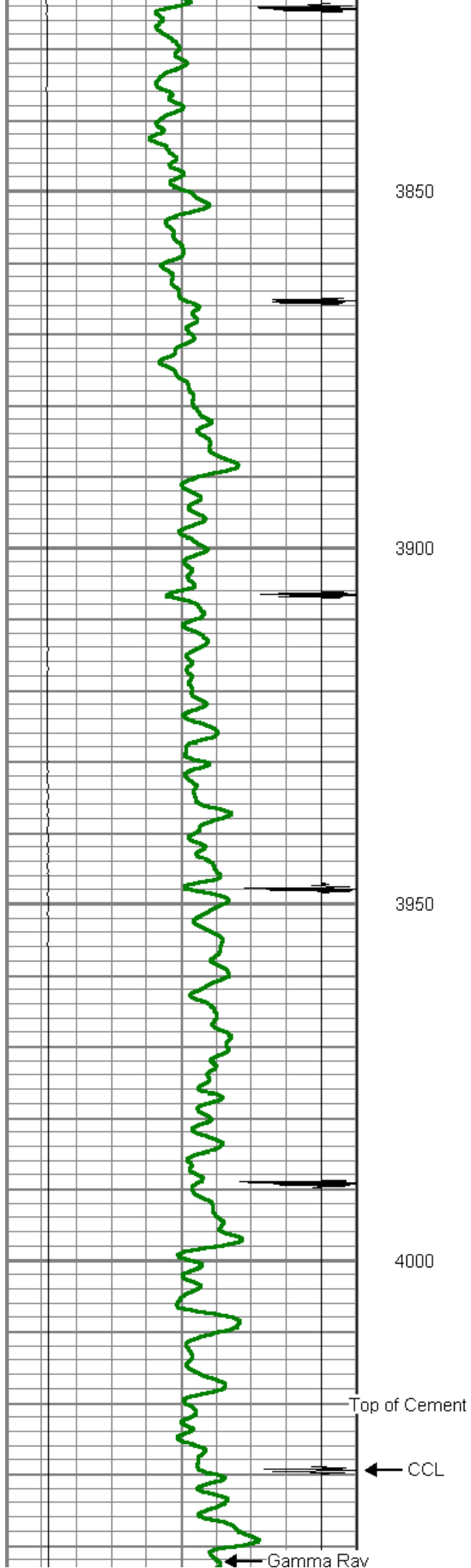


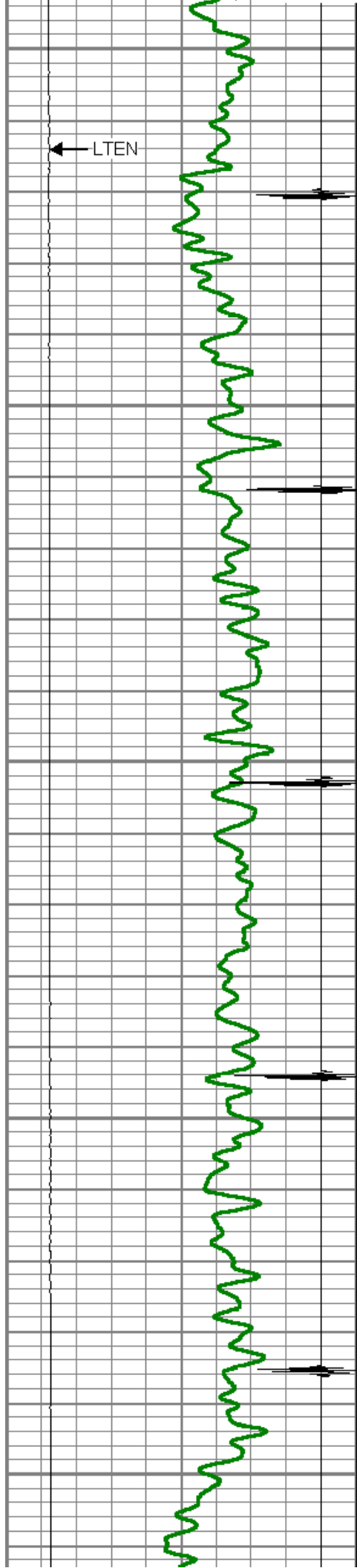
MAIN PASS

5" = 100'

Database File: martinson 3-24.db
 Dataset Pathname: pass6
 Presentation Format: dcbl_prb
 Dataset Creation: Wed Jan 18 11:02:39 2012 by Log SCH 110722
 Charted by: Depth in Feet scaled 1:240







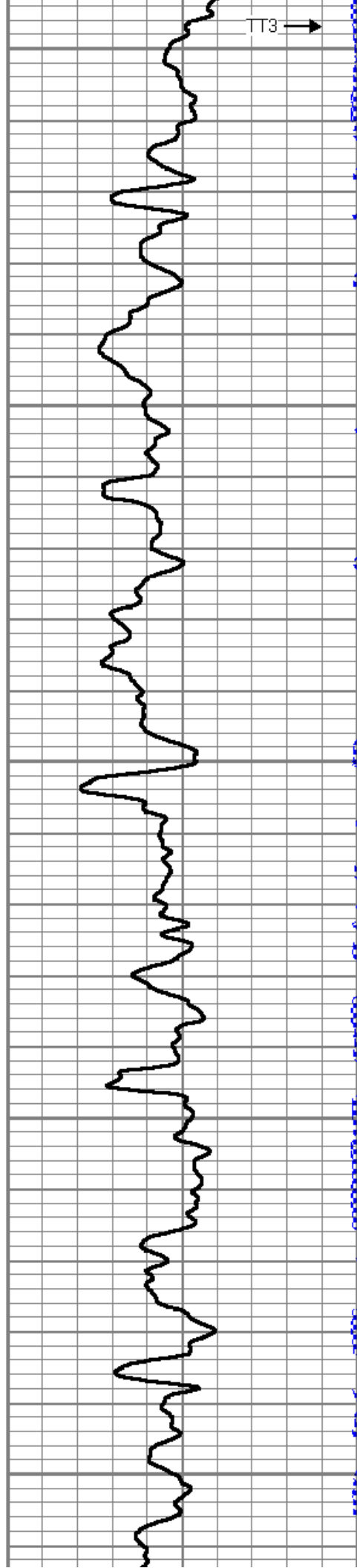
4050

4100

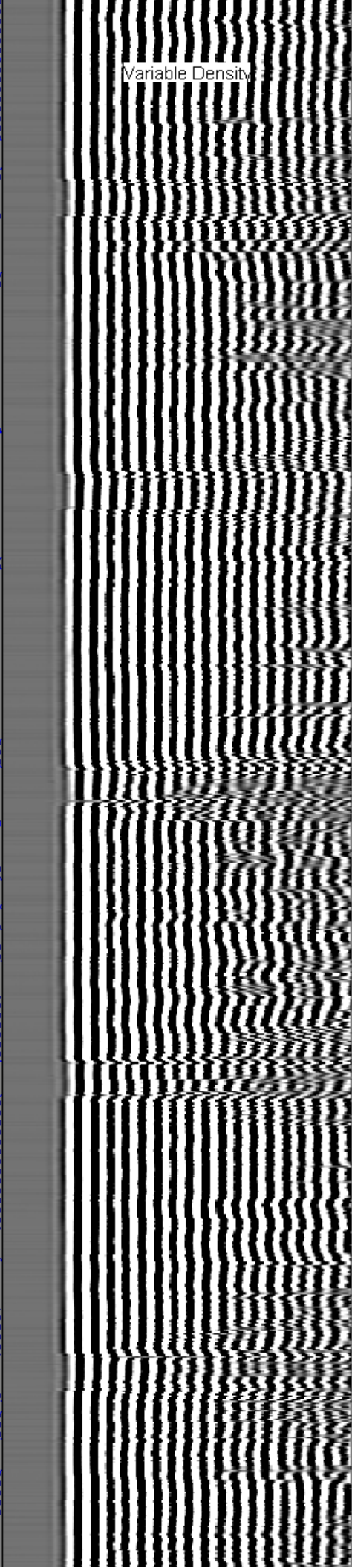
4150

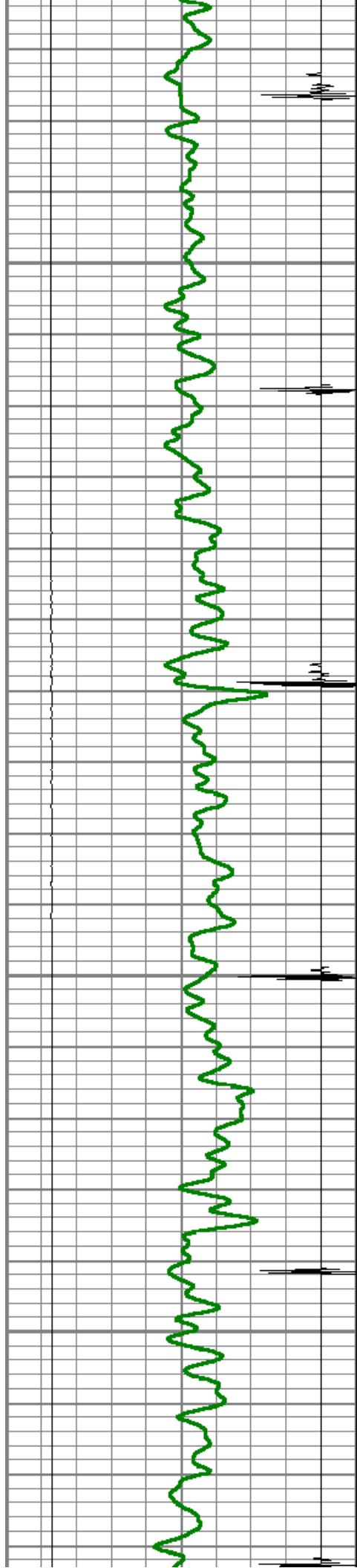
4200

4250



Variable Density



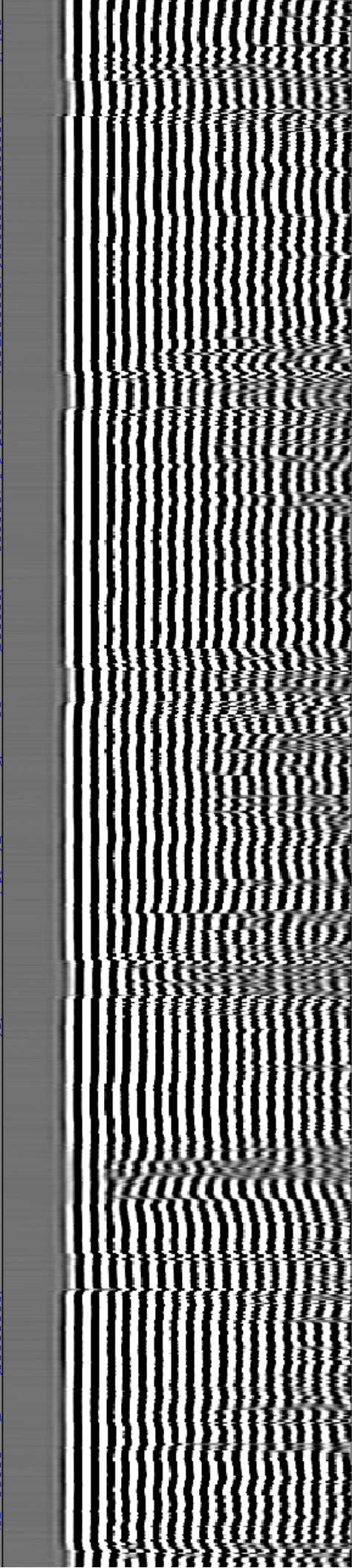
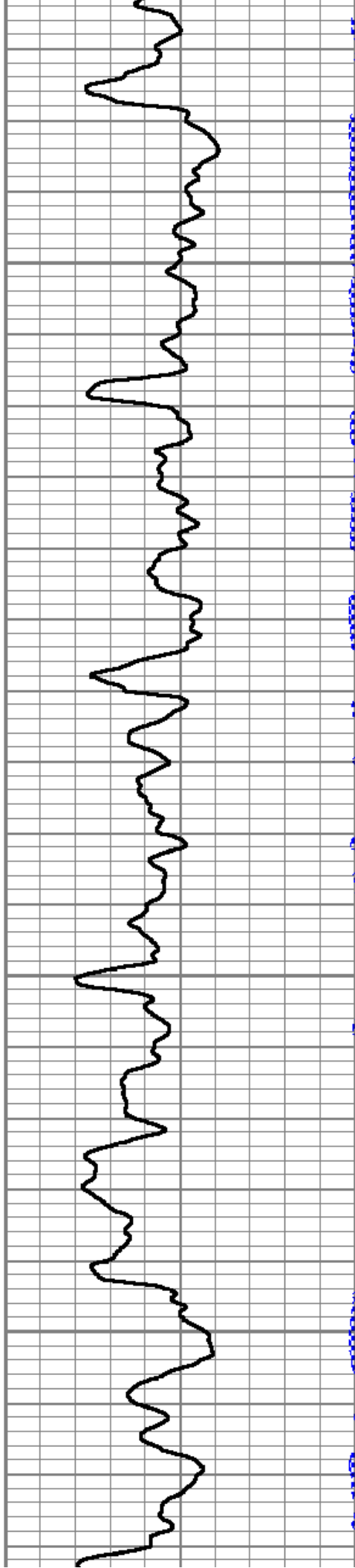


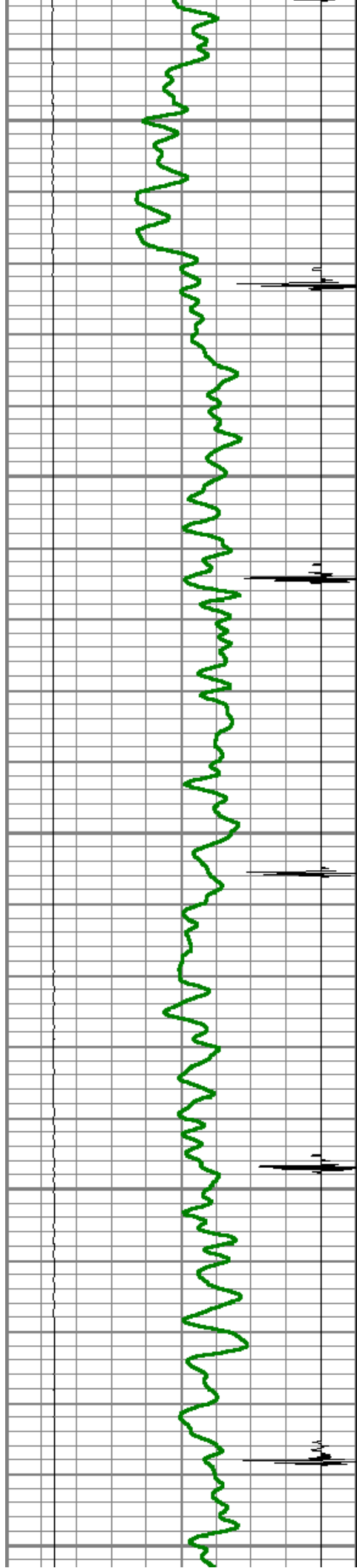
4300

4350

4400

4450





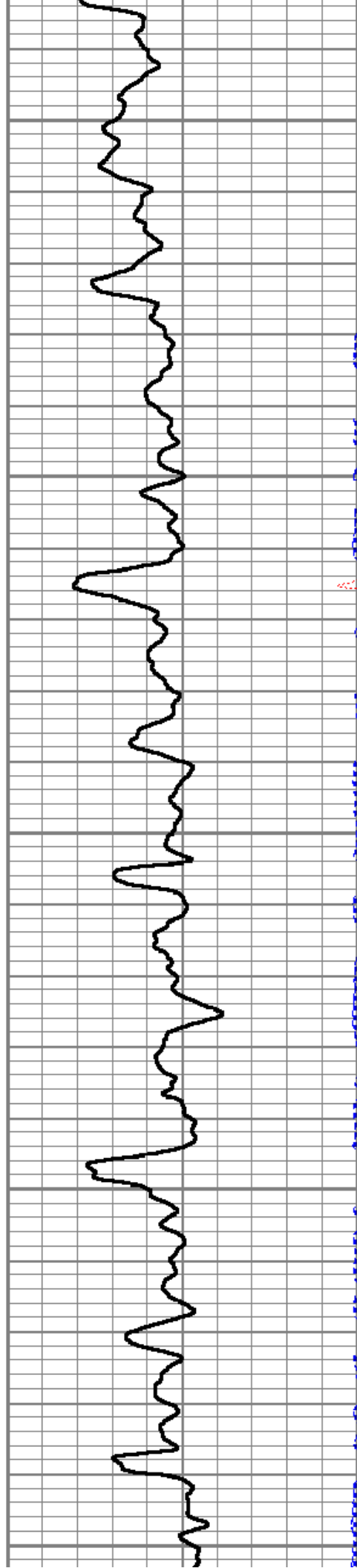
4500

4550

4600

4650

4700



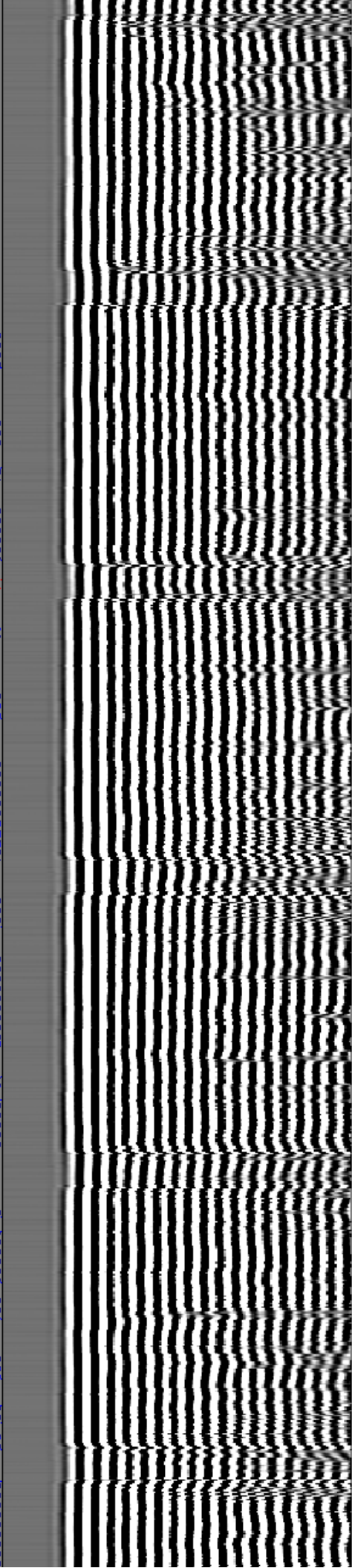
4500

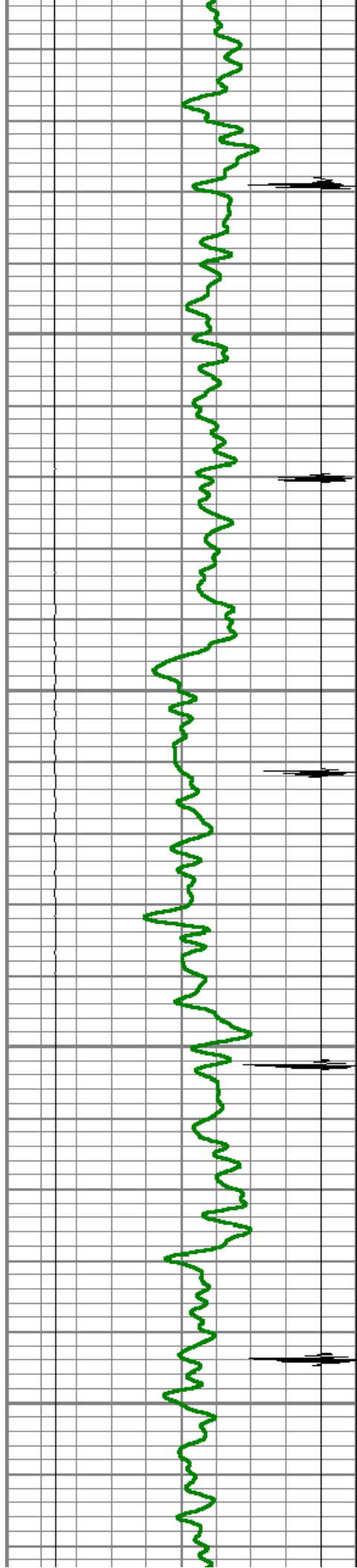
4550

4600

4650

4700



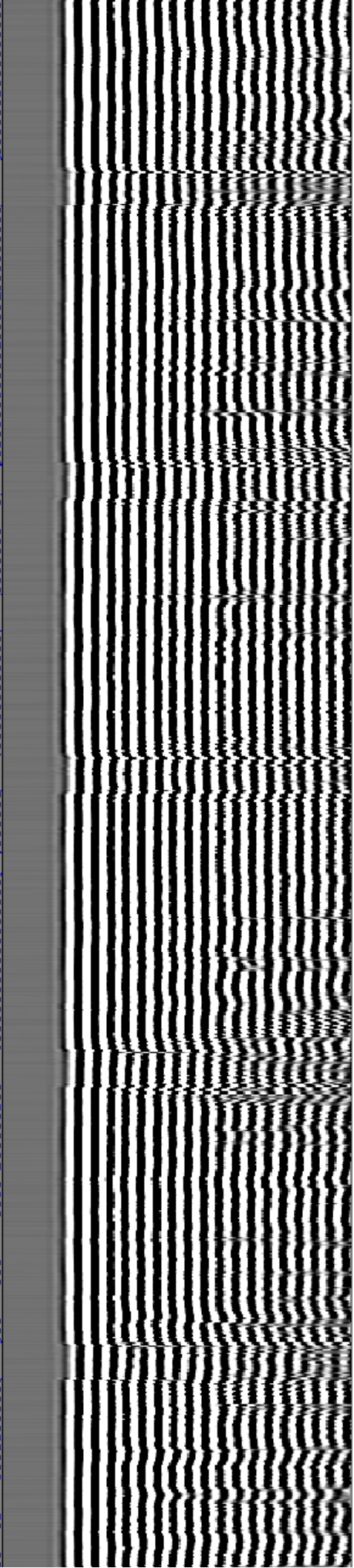
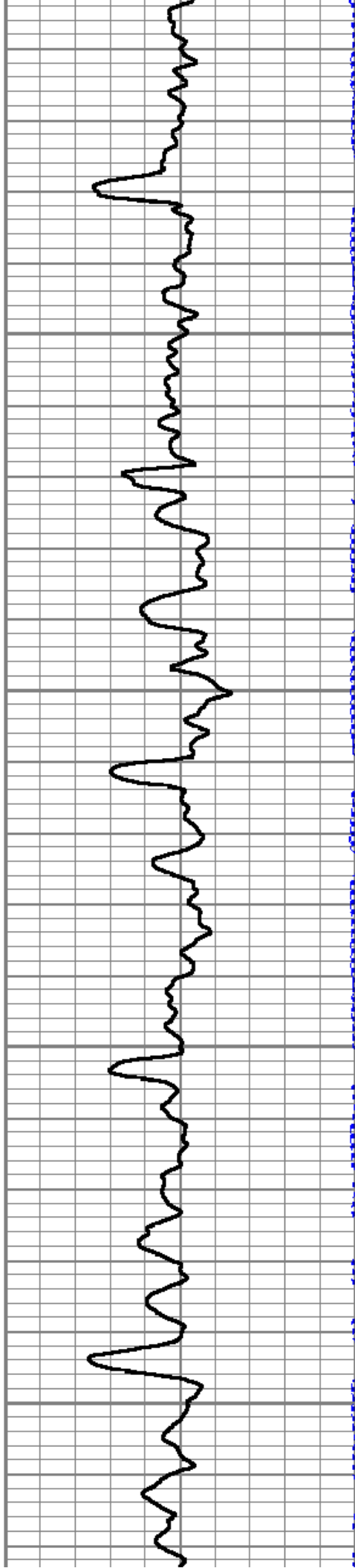


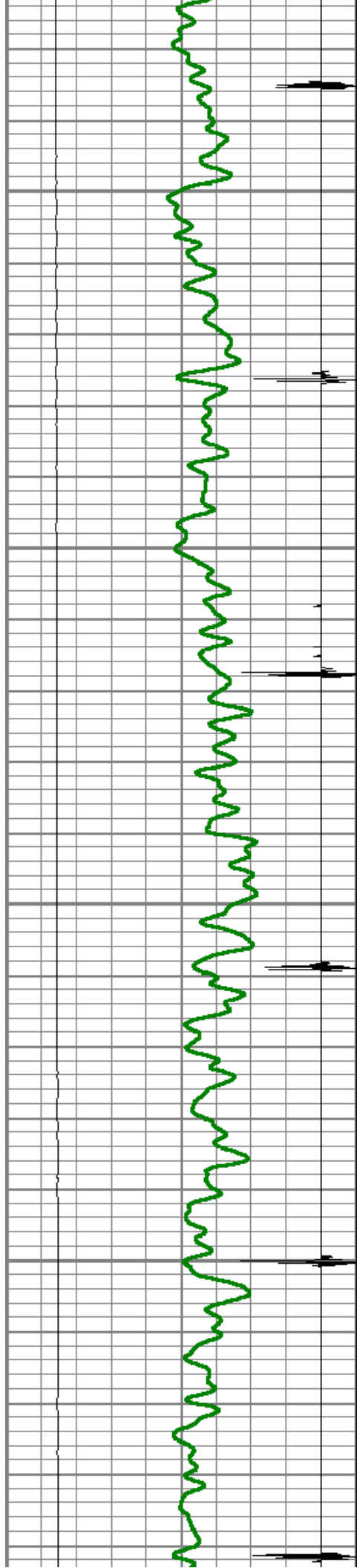
4750

4800

4850

4900



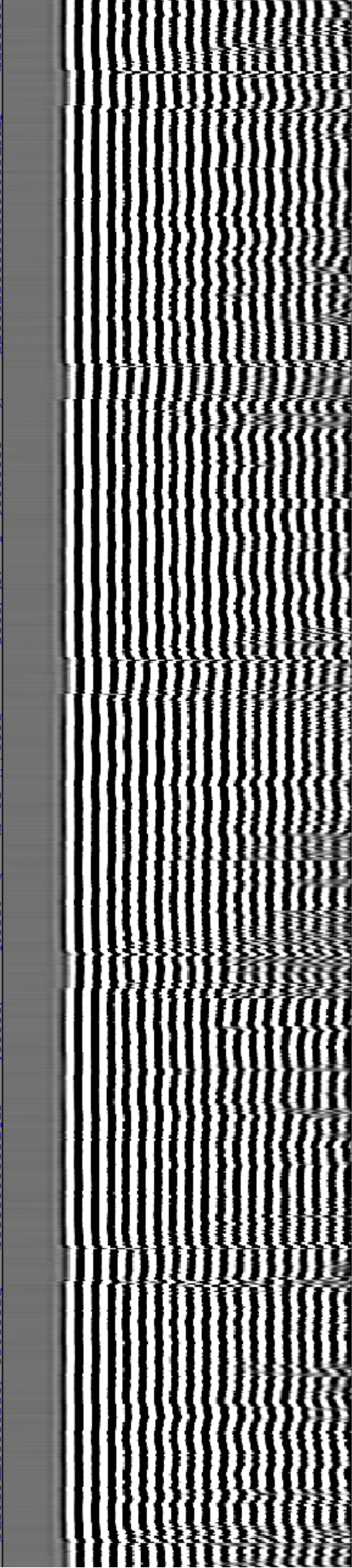
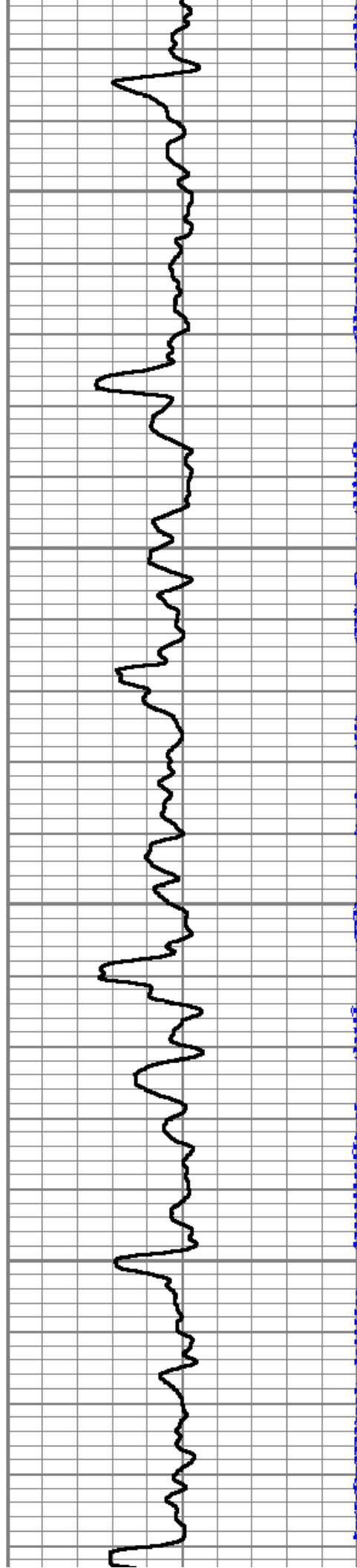


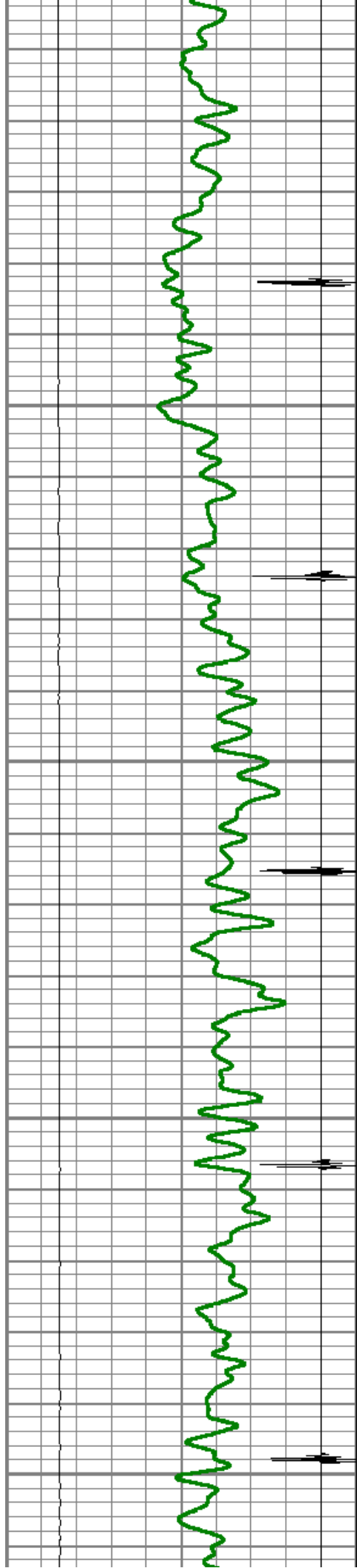
4950

5000

5050

5100





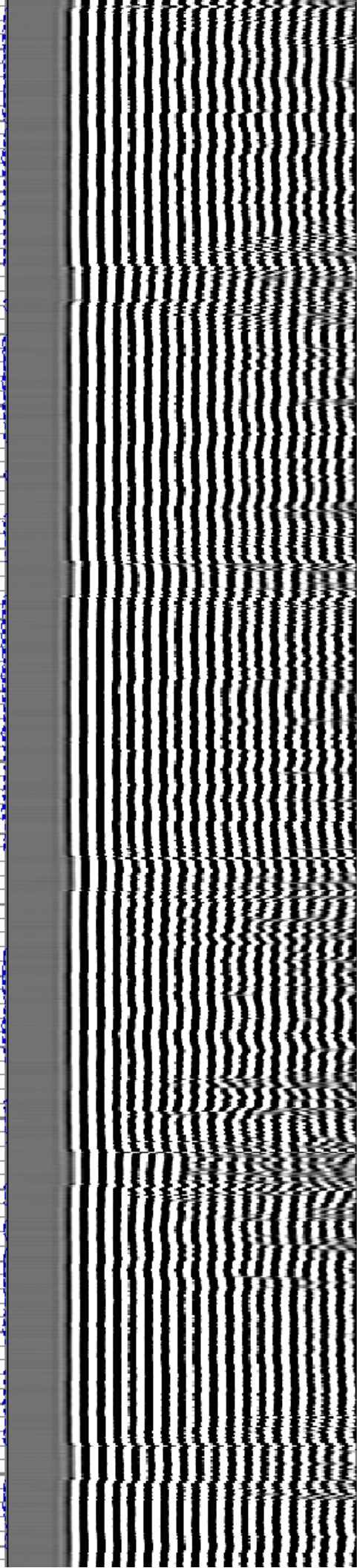
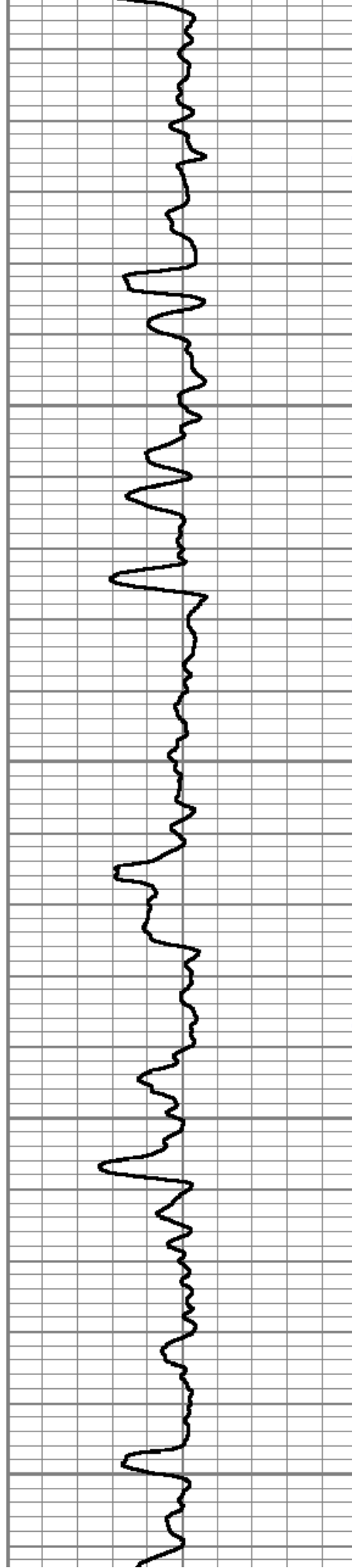
5150

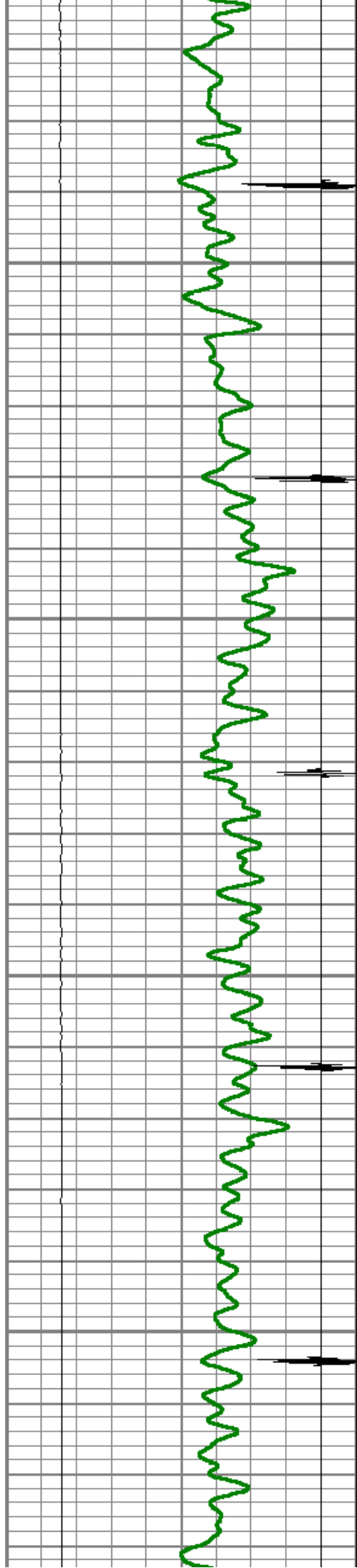
5200

5250

5300

5350



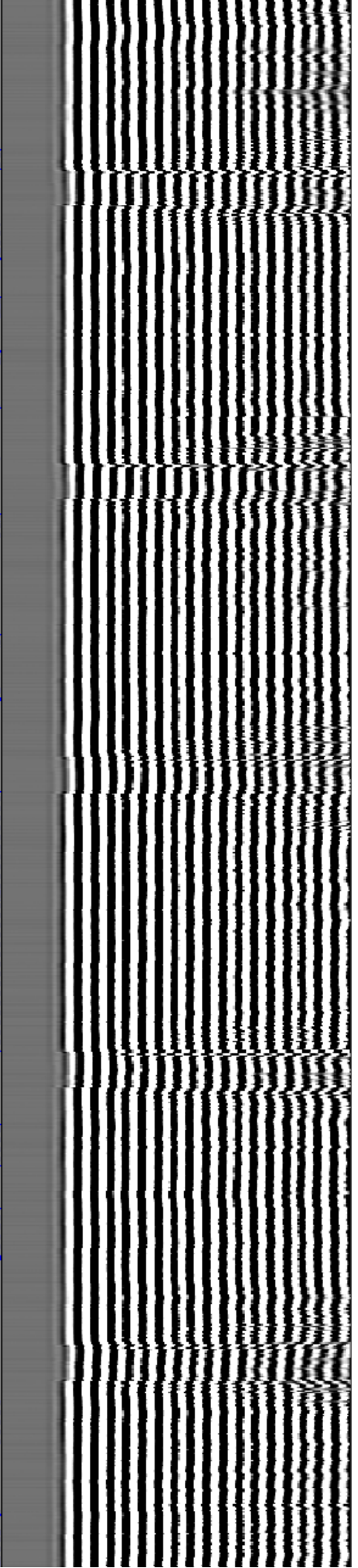
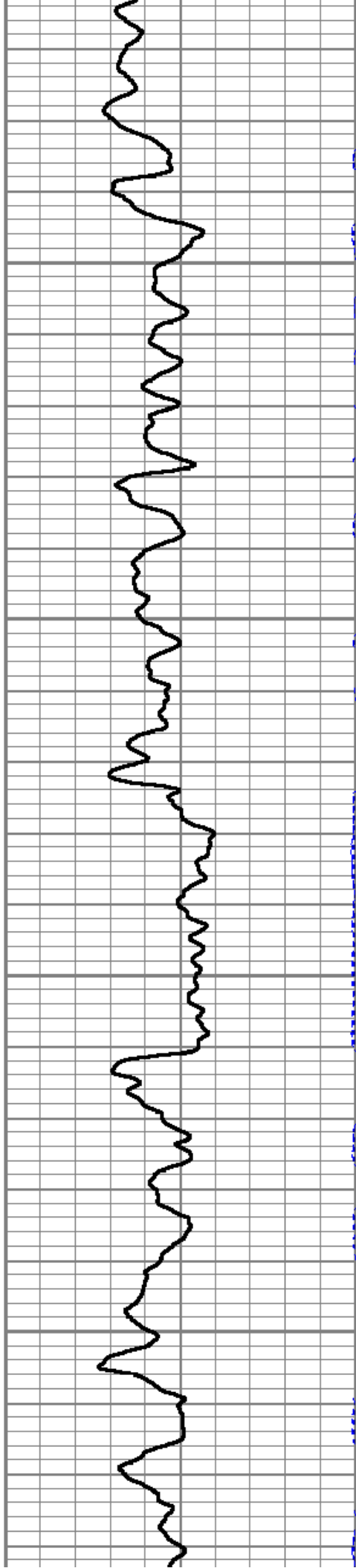


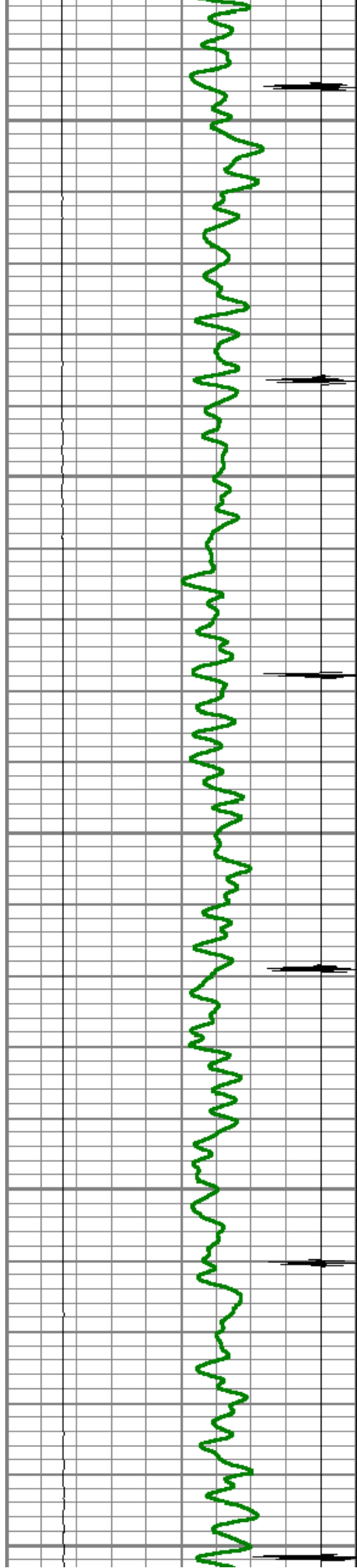
5400

5450

5500

5550





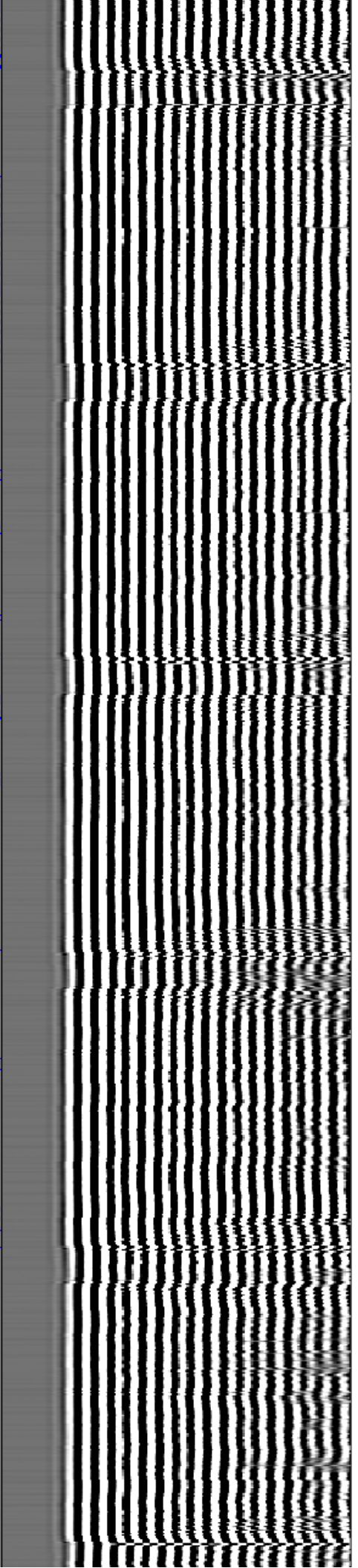
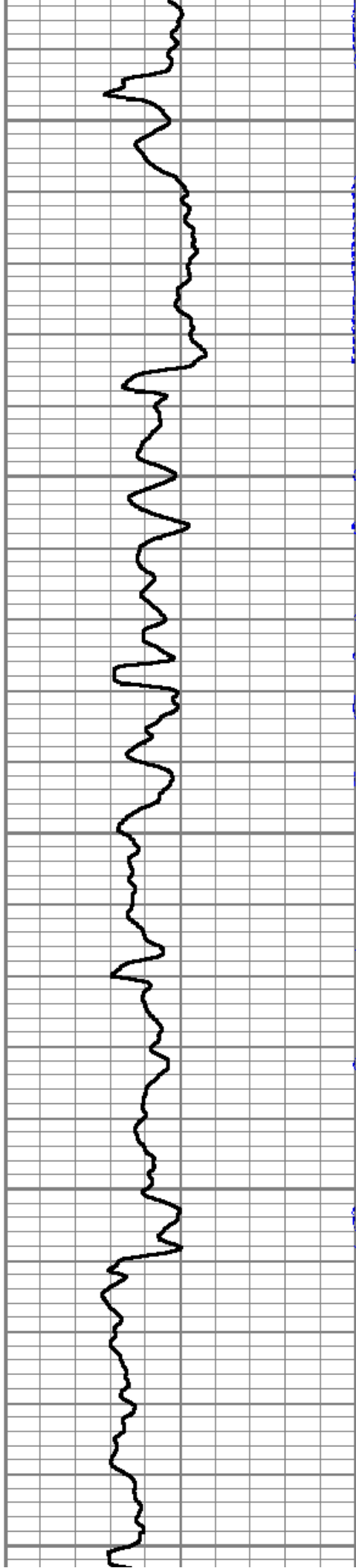
5600

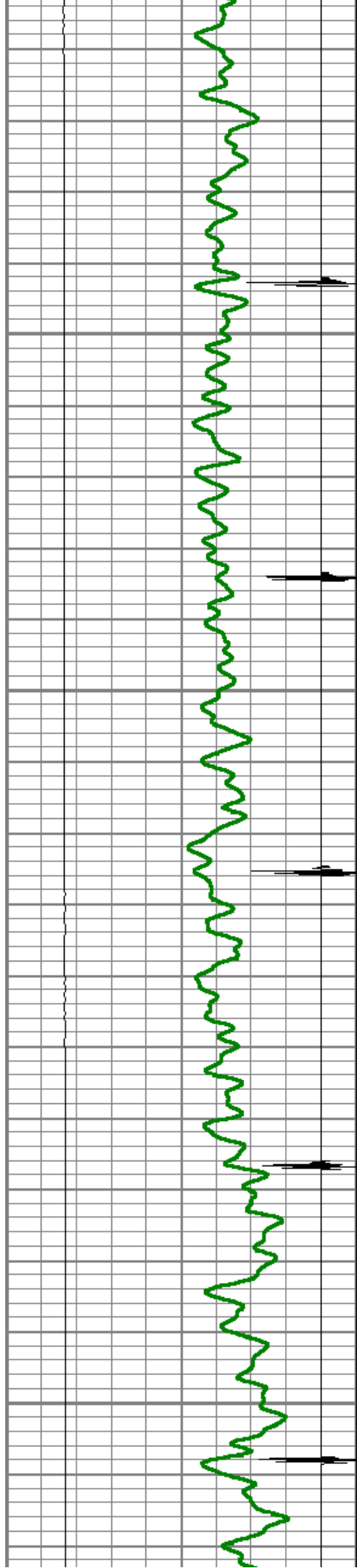
5650

5700

5750

5800



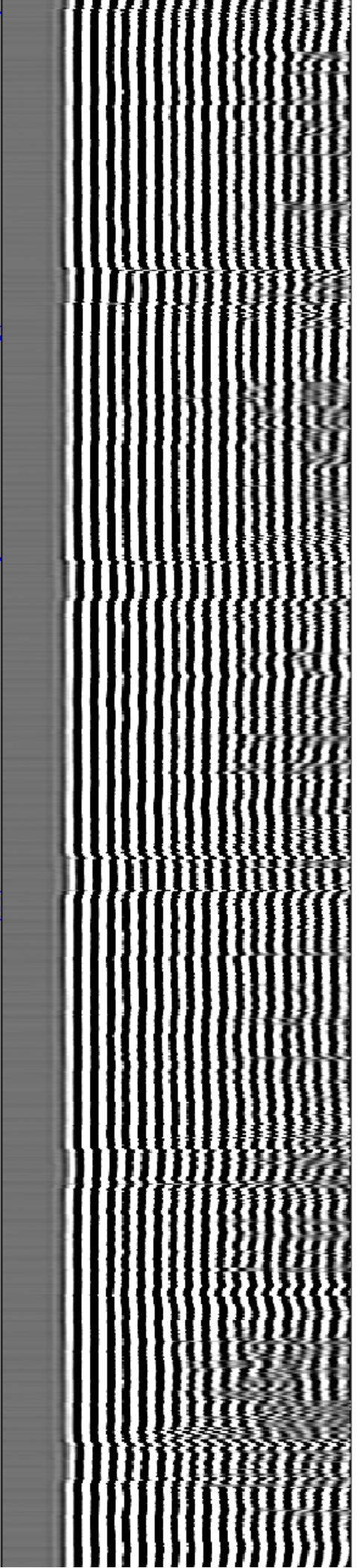
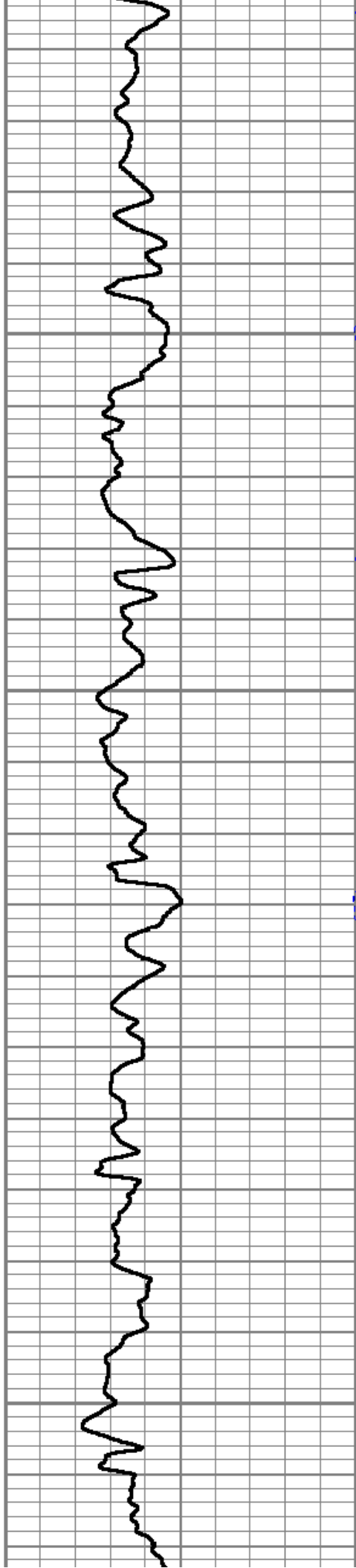


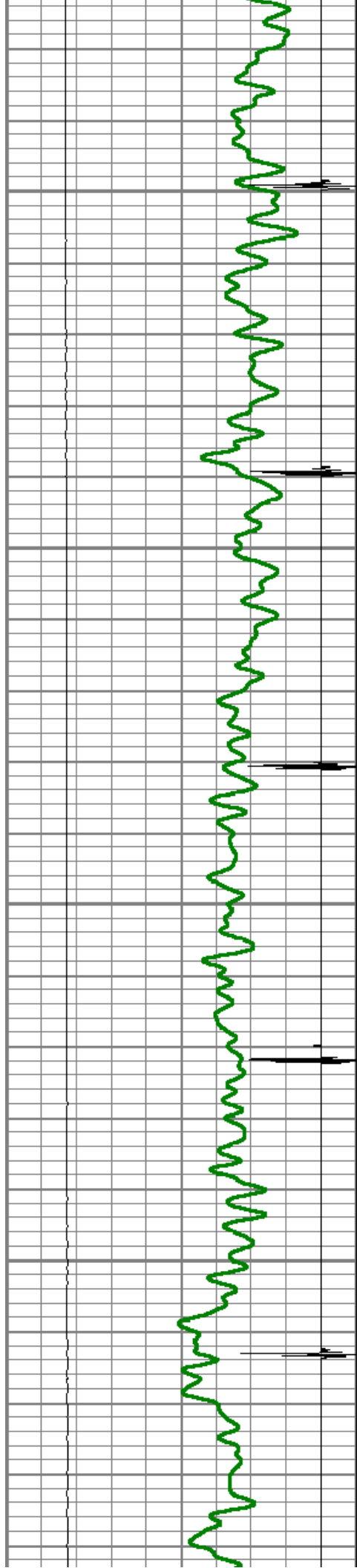
5850

5900

5950

6000



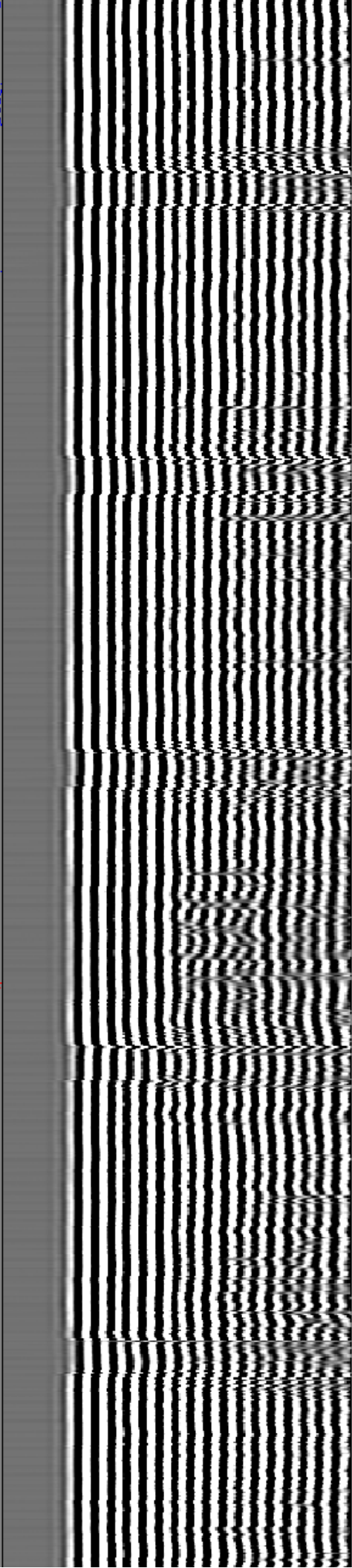
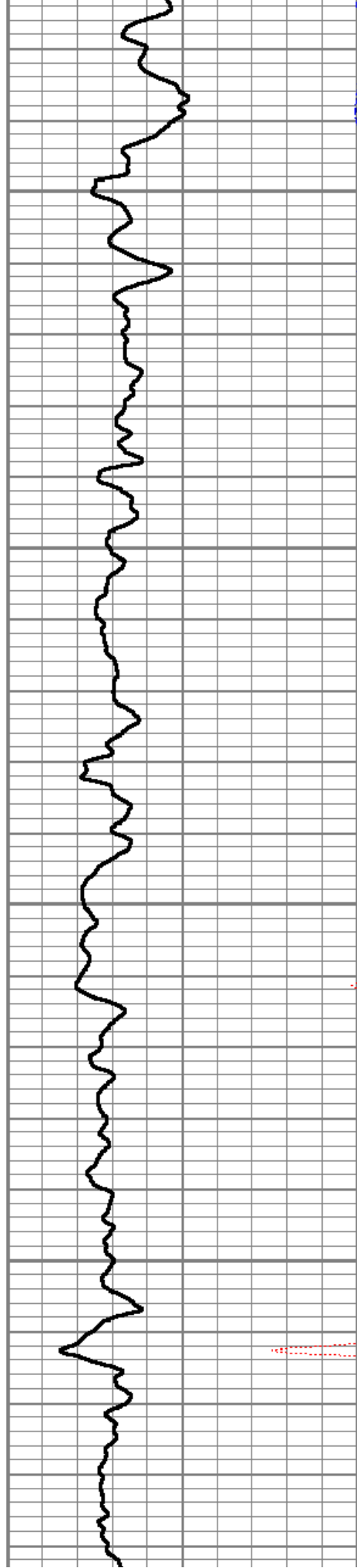


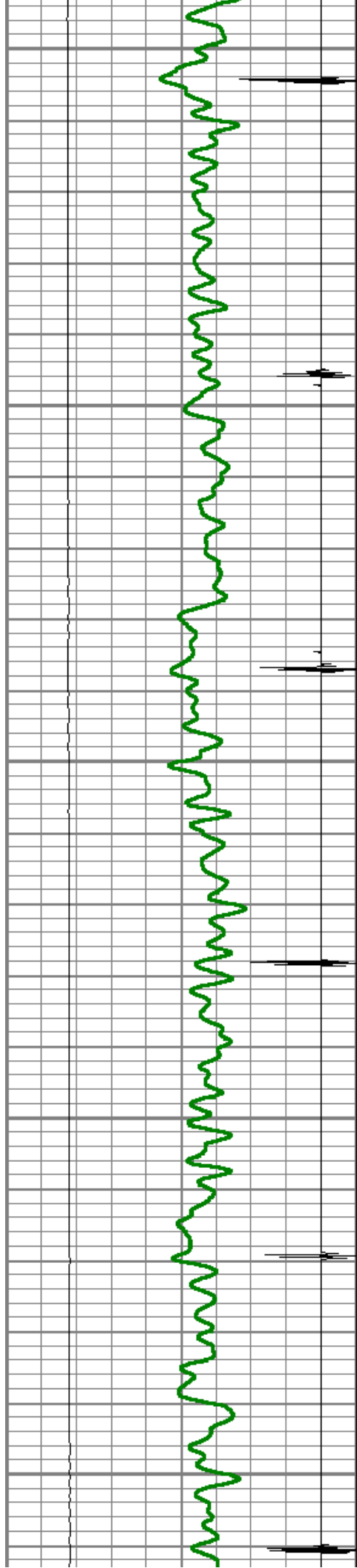
6050

6100

6150

6200





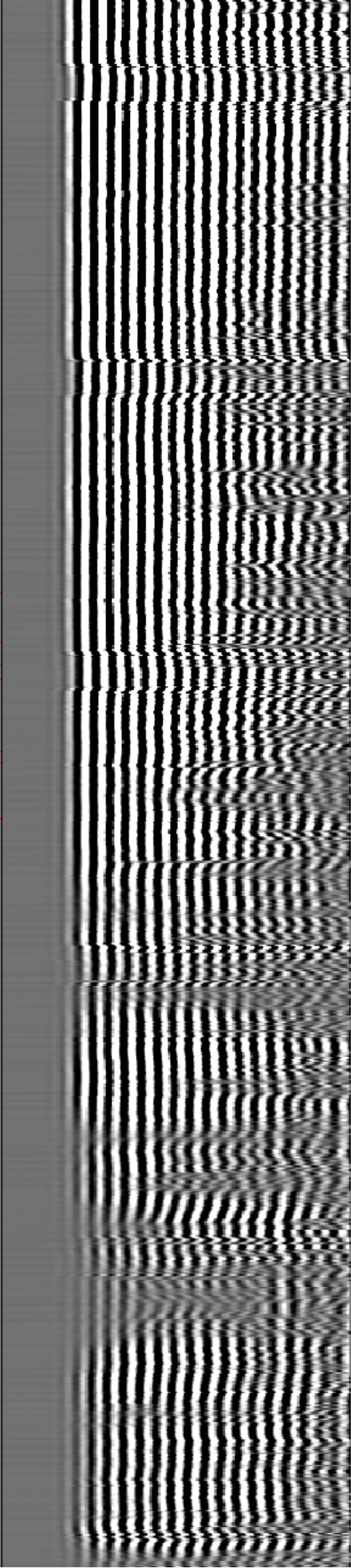
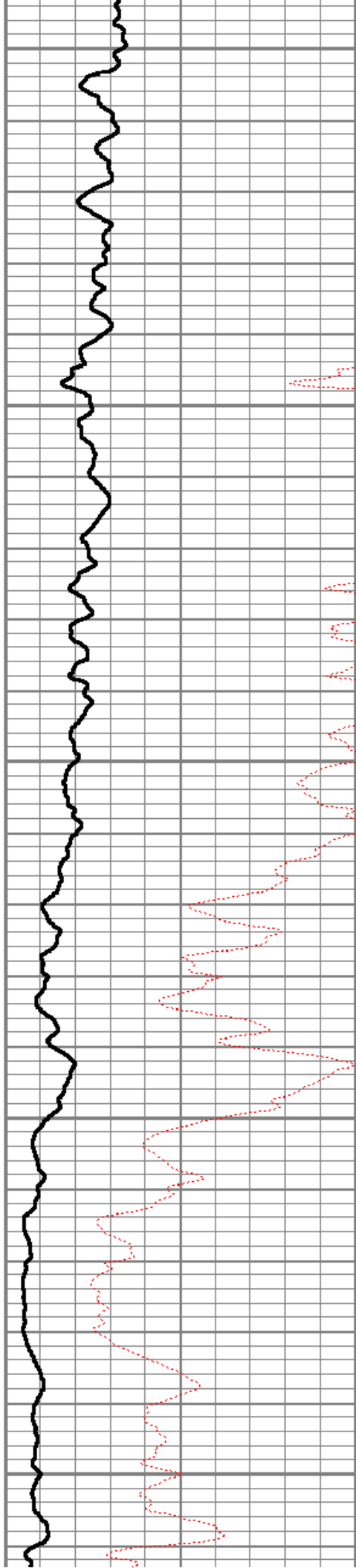
6250

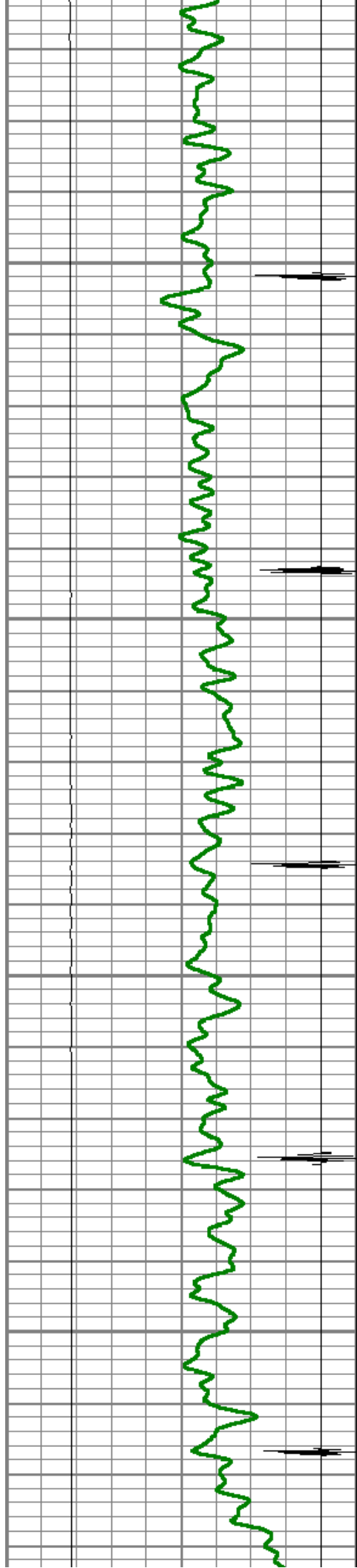
6300

6350

6400

6450



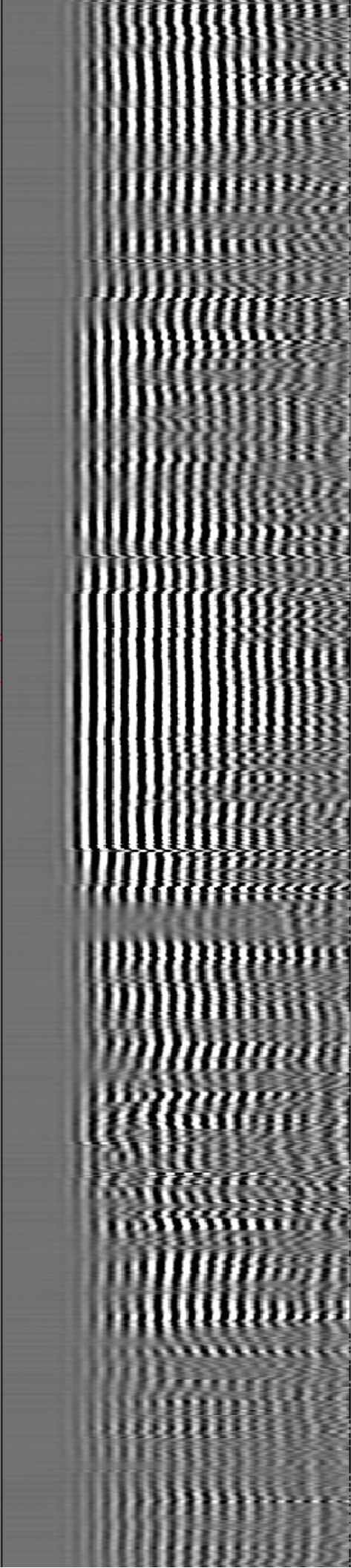
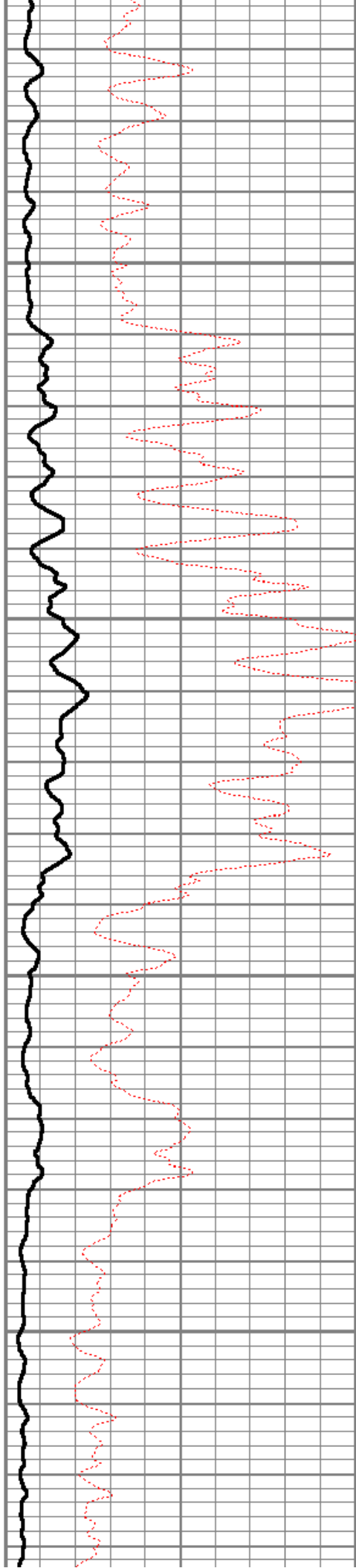


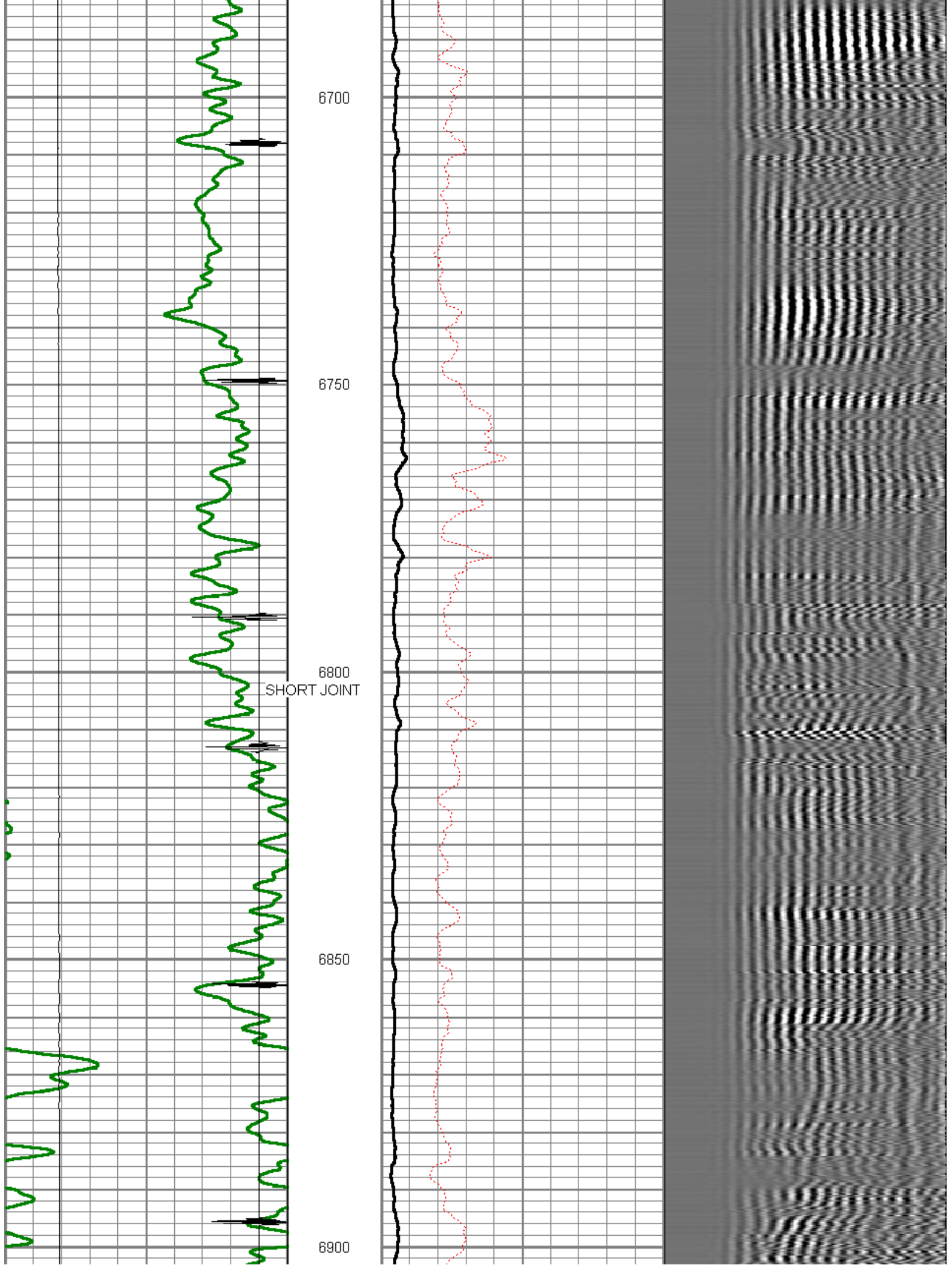
6500

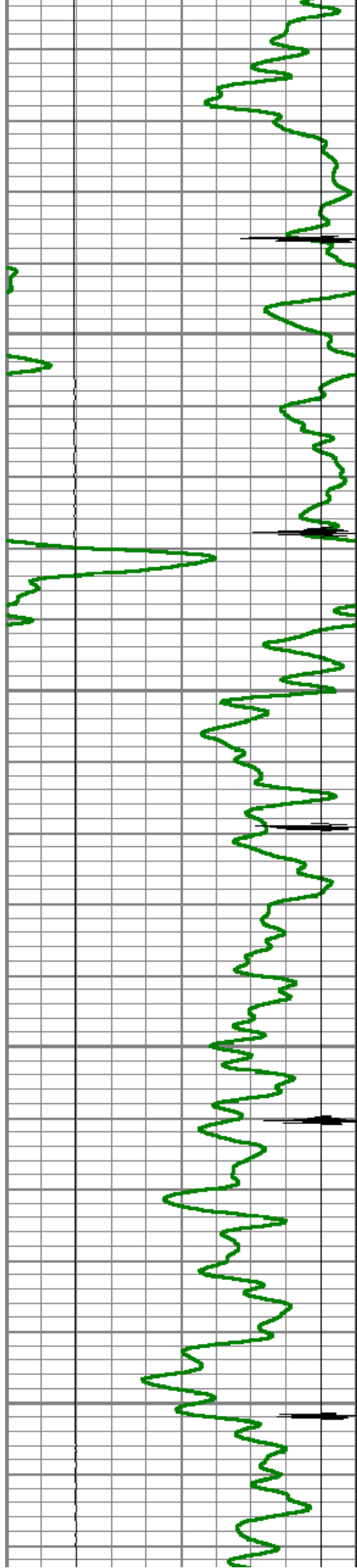
6550

6600

6650





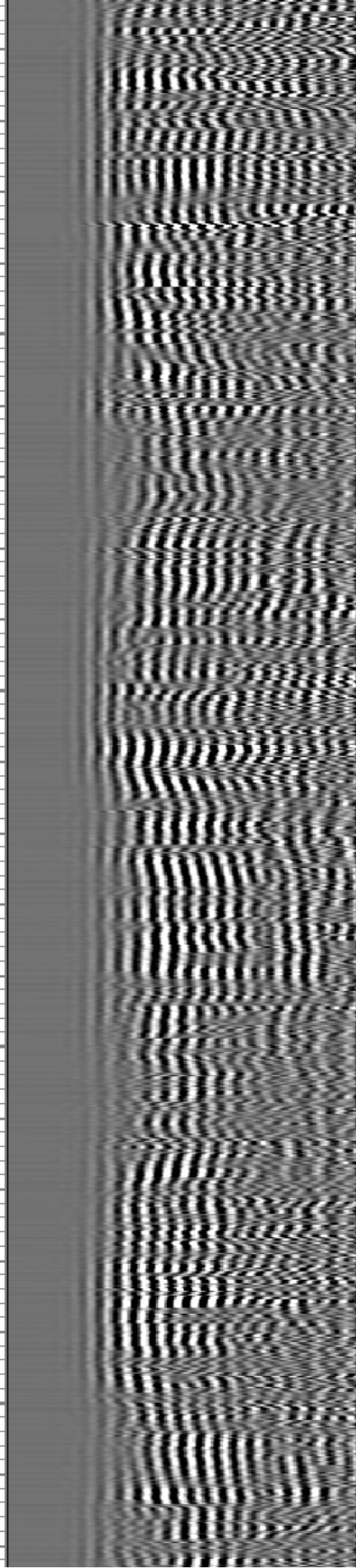
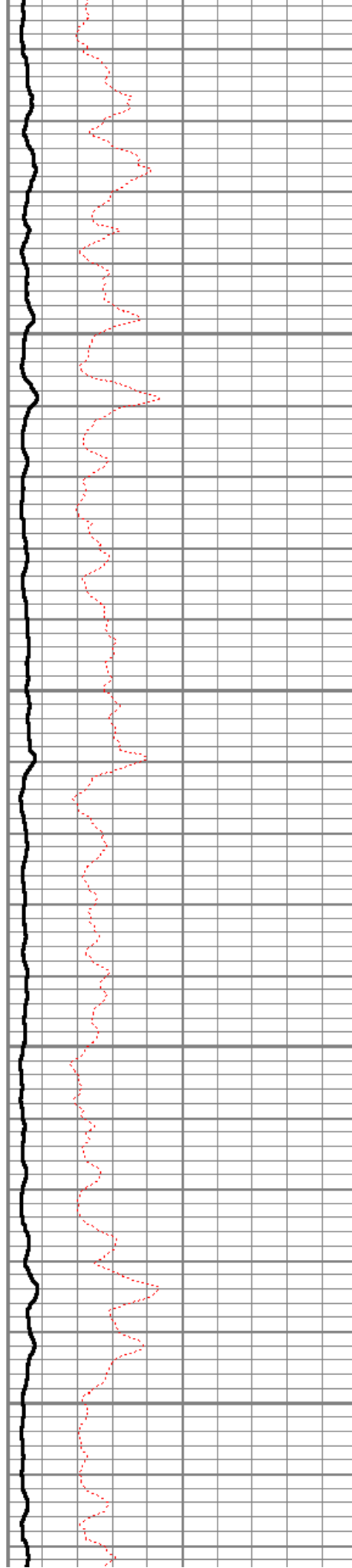


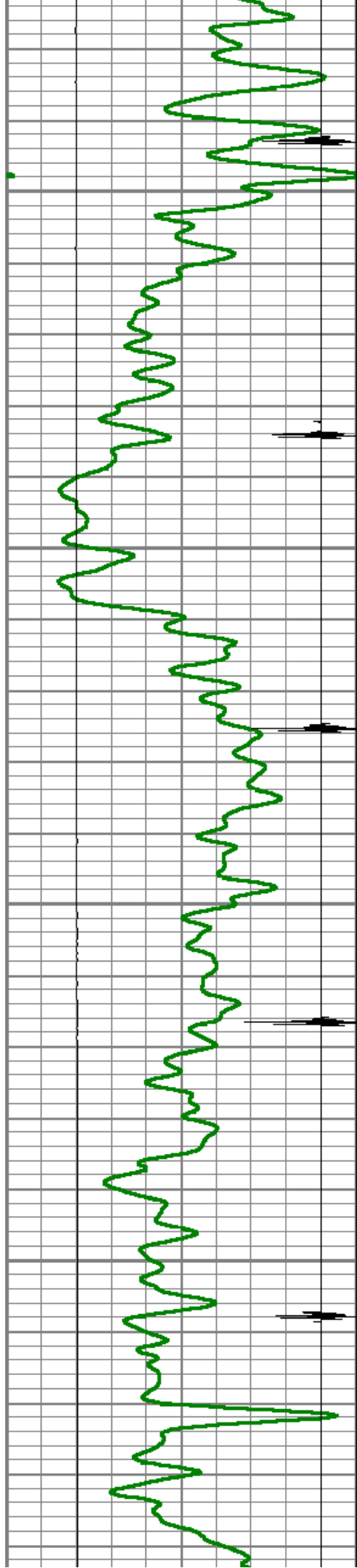
6950

7000

7050

7100



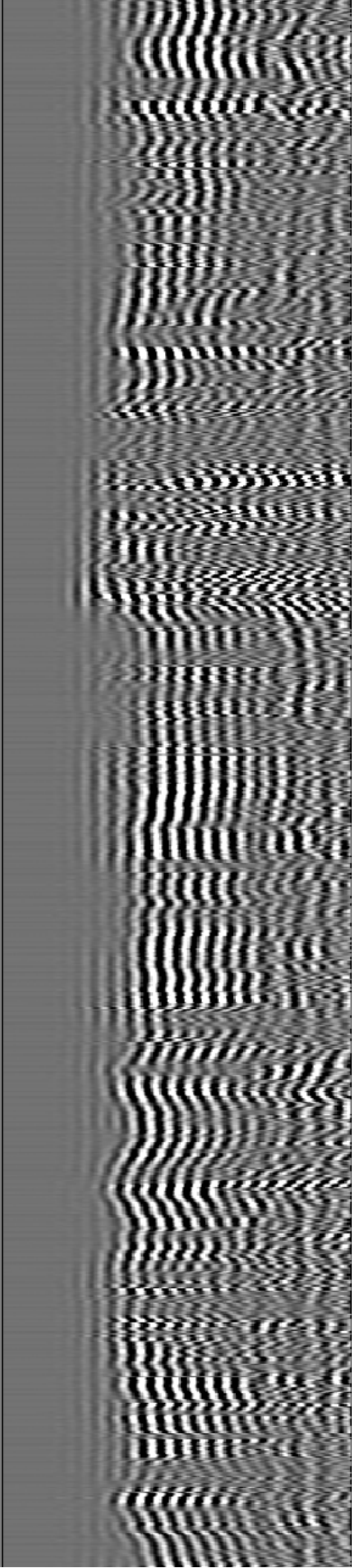
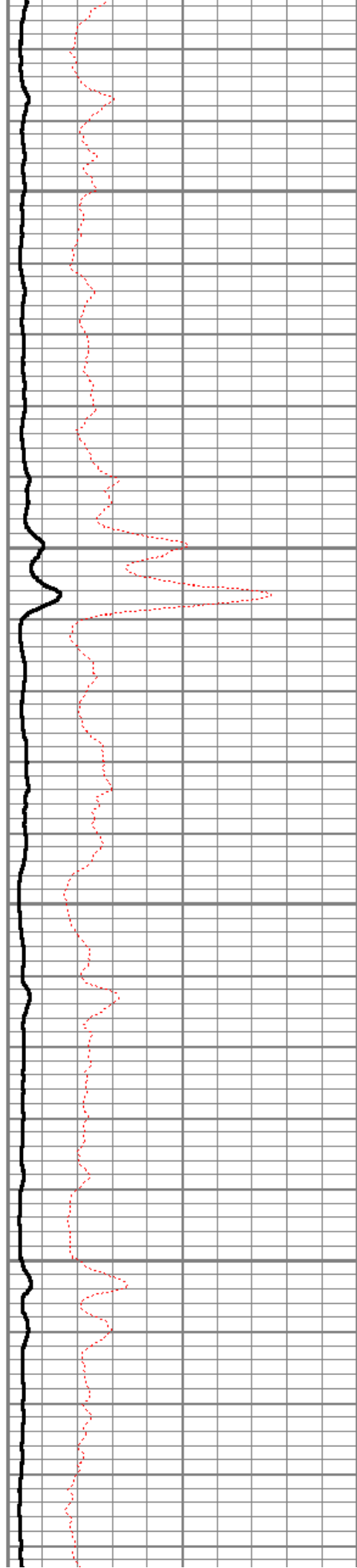


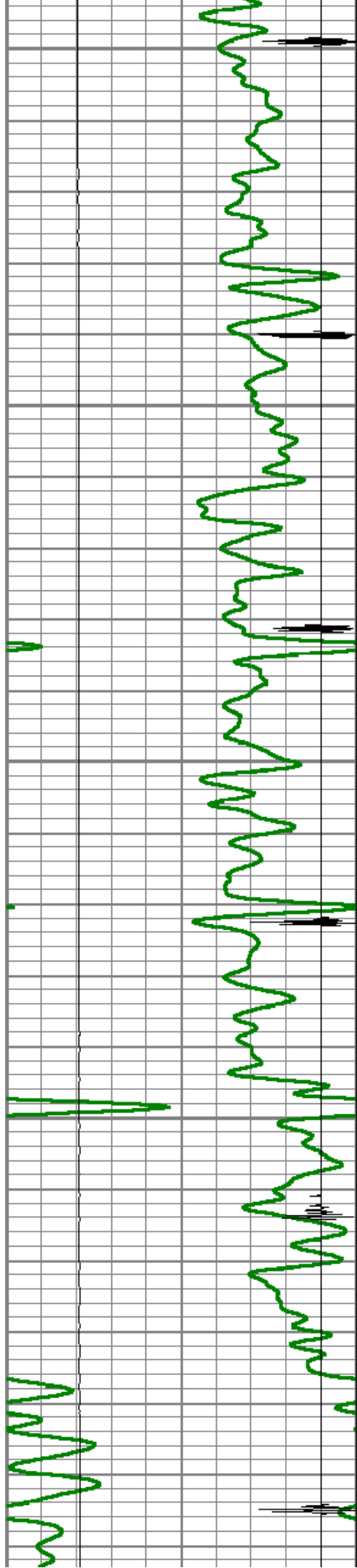
7150

7200

7250

7300





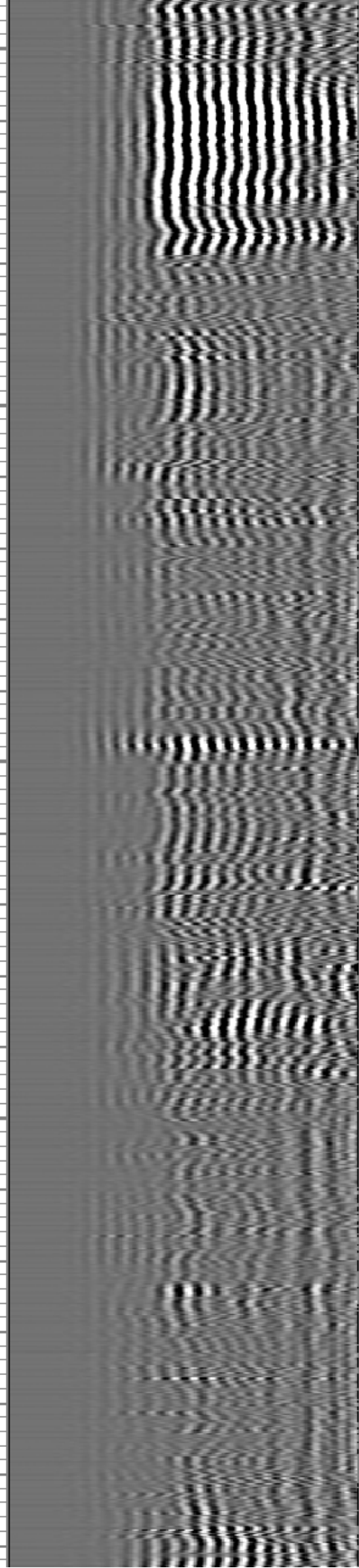
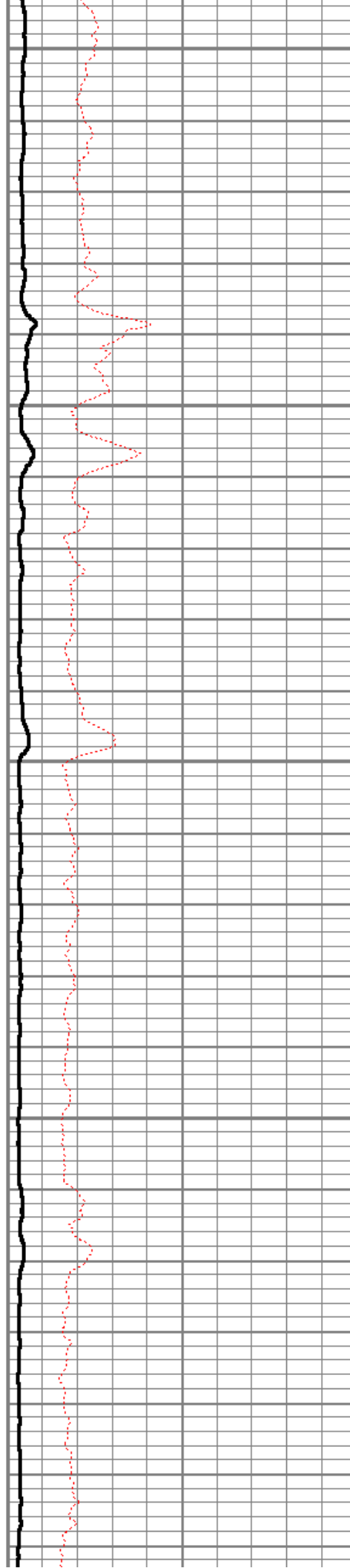
7350

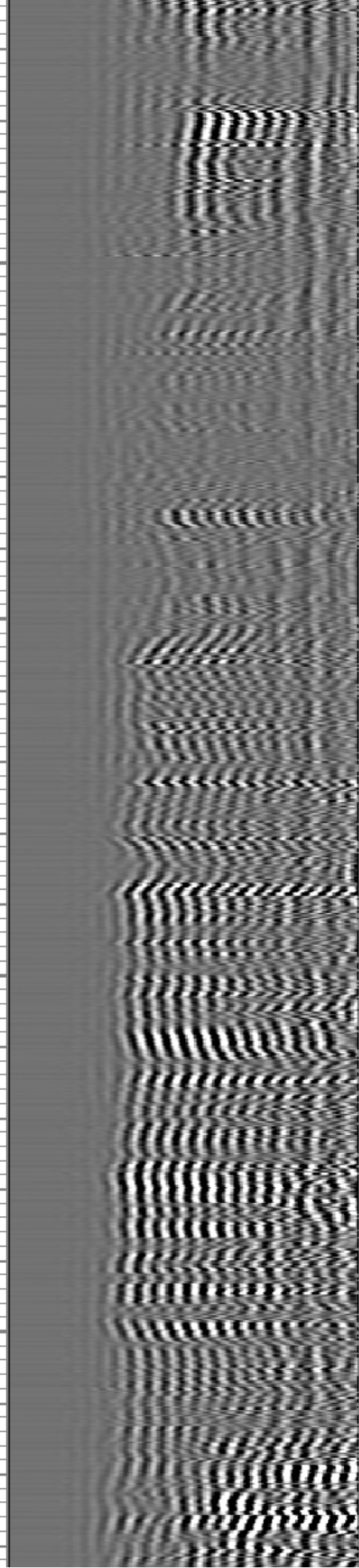
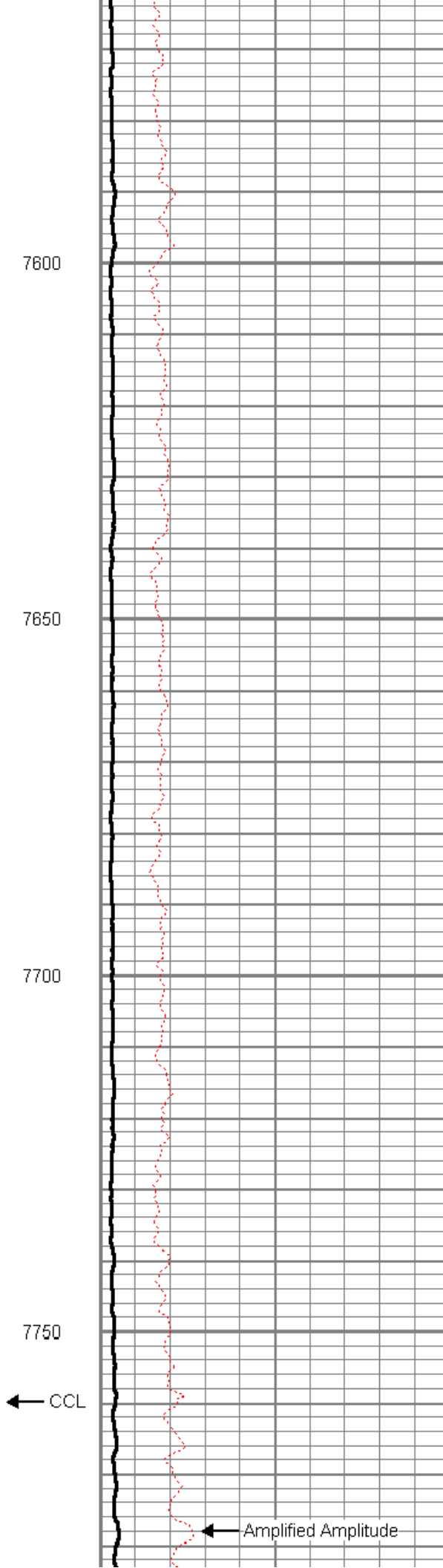
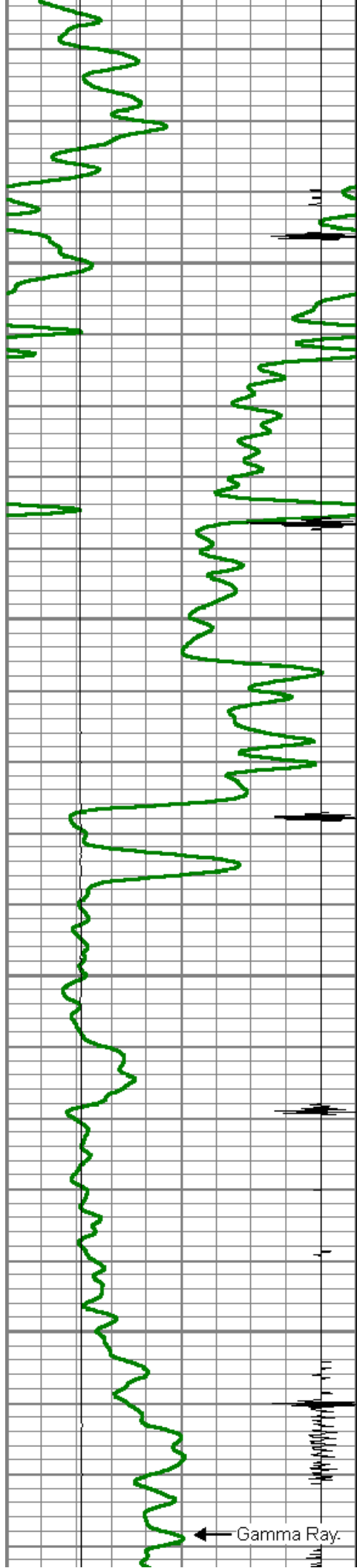
7400

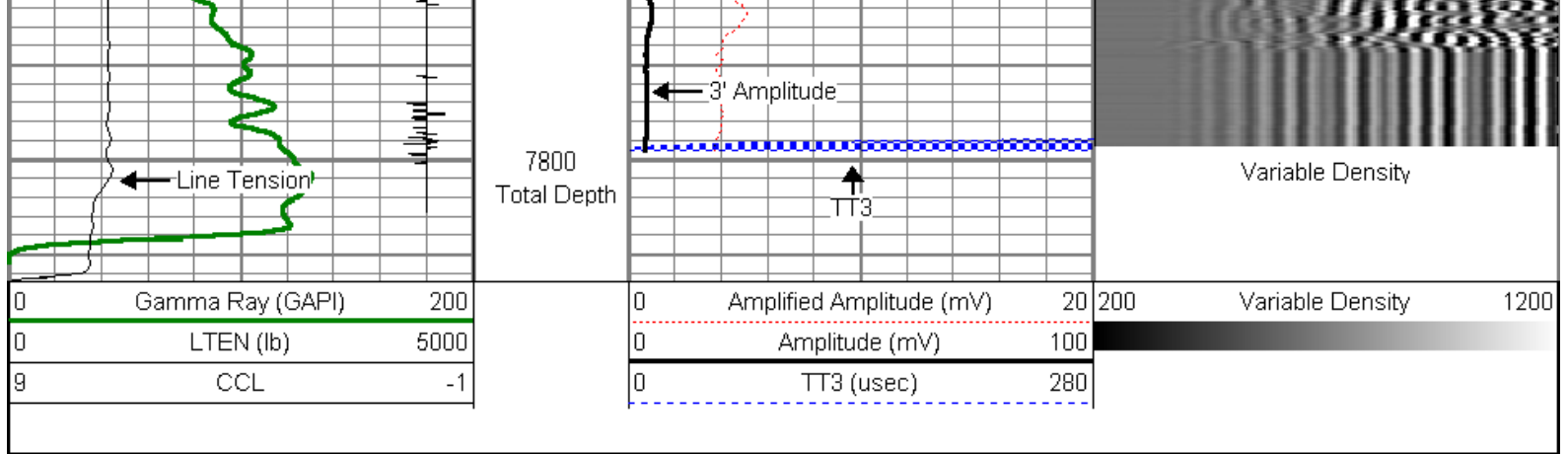
7450

7500

7550







Company	ENCANA OIL & GAS (USA) INC
Well	MARTINSON 3-24
Field	WATTENBERG
County	WELD
State	COLORADO