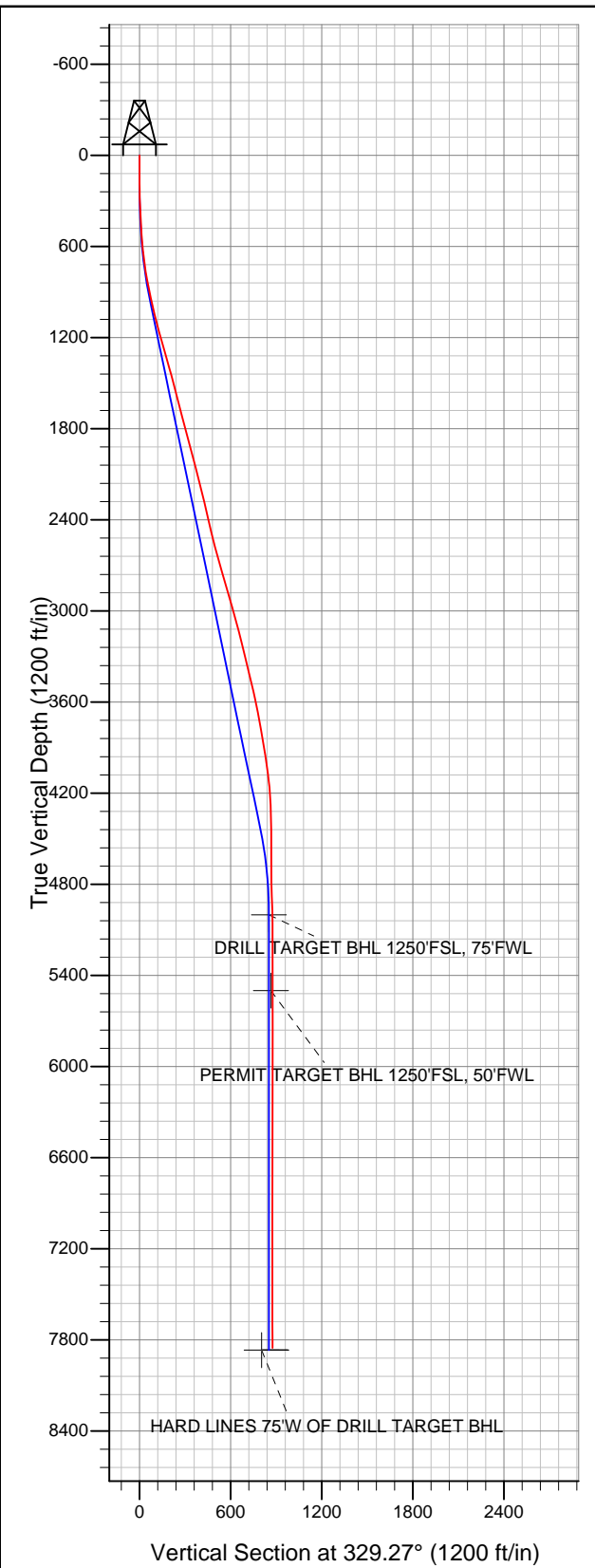


Well Name: Martinson 0-6-24

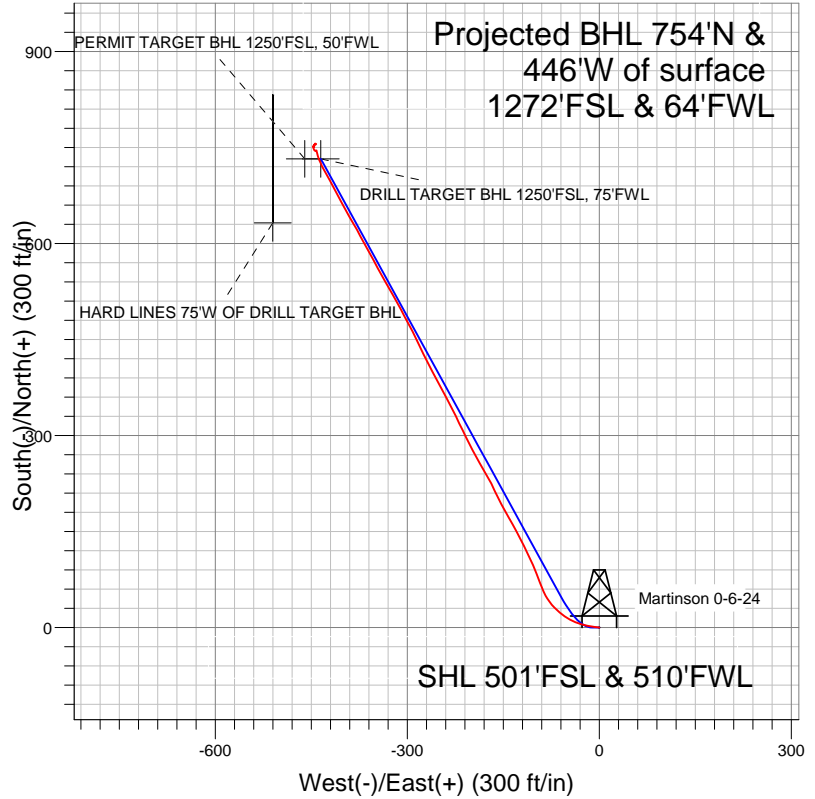
Surface Location: Martinson 0-6-24 Pad Sec.24-T4N-R66W
 North American Datum 1983 US State Plane 1983 Colorado Northern Zone
 Ground Elevation: 4744.0

+N/-S	+E/-W	Northing	Easting	Latitude	Longitude	Slot
0.0	0.0	1350003.41	3213928.38	40.291620	-104.733100	

 Original Well Elev WELL @ 4757.0ft (Original Well Elev)



EnCana Oil & Gas Weld County CO



LEGEND

- ✕ Martinson 0-6-24, Wellbore #1, Plan #1 (11-16-11) V0
- Wellbore #1

Final Survey Plot

Projected Final Survey -
 7957'MD & 7853'TVD @ 876'VS
 0.7 deg Inc 10.3 deg AZ

Project: SEC.24-T4N-R66W
 Site: Martinson 0-6-24 Pad Sec.24-T4N-R66W
 Well: Martinson 0-6-24
 Plan: Wellbore #1



EnCana Oil & Gas Weld County CO

SEC.24-T4N-R66W

Martinson 0-6-24 Pad Sec.24-T4N-R66W

Martinson 0-6-24

Wellbore #1

Design: Wellbore #1

Standard Survey Report

03 January, 2012

Company:	EnCana Oil & Gas Weld County CO	Local Co-ordinate Reference:	Well Martinson 0-6-24
Project:	SEC.24-T4N-R66W	TVD Reference:	WELL @ 4757.0ft (Original Well Elev)
Site:	Martinson 0-6-24 Pad Sec.24-T4N-R66W	MD Reference:	WELL @ 4757.0ft (Original Well Elev)
Well:	Martinson 0-6-24	North Reference:	True
Wellbore:	Wellbore #1	Survey Calculation Method:	Minimum Curvature
Design:	Wellbore #1	Database:	Landmark

Survey

Measured Depth (ft)	Inclination (°)	Azimuth (°)	Vertical Depth (ft)	+N/-S (ft)	+E/-W (ft)	Vertical Section (ft)	Dogleg Rate (°/100ft)	Build Rate (°/100ft)	Turn Rate (°/100ft)
1,142.0	15.10	340.00	1,129.6	82.0	-97.2	120.1	1.25	1.17	1.70
1,235.0	15.50	333.40	1,219.3	104.5	-106.9	144.4	1.92	0.43	-7.10
1,329.0	16.00	334.50	1,309.7	127.4	-118.1	169.9	0.62	0.53	1.17
1,423.0	15.90	332.00	1,400.1	150.4	-129.7	195.6	0.74	-0.11	-2.66
1,516.0	14.60	329.40	1,489.8	171.8	-141.7	220.1	1.58	-1.40	-2.80
1,610.0	14.80	333.20	1,580.8	192.7	-153.1	243.9	1.05	0.21	4.04
1,704.0	14.90	334.40	1,671.6	214.3	-163.8	267.9	0.34	0.11	1.28
1,797.0	15.10	330.50	1,761.5	235.6	-174.9	291.9	1.11	0.22	-4.19
1,891.0	14.50	329.50	1,852.3	256.4	-186.9	315.9	0.69	-0.64	-1.06
1,985.0	14.60	333.10	1,943.3	277.1	-198.2	339.5	0.97	0.11	3.83
2,078.0	14.20	333.30	2,033.4	297.8	-208.7	362.6	0.43	-0.43	0.22
2,172.0	15.10	335.10	2,124.4	319.2	-219.0	386.3	1.07	0.96	1.91
2,266.0	14.10	332.60	2,215.3	340.5	-229.4	409.9	1.26	-1.06	-2.66
2,359.0	12.80	332.00	2,305.8	359.6	-239.5	431.5	1.41	-1.40	-0.65
2,453.0	13.00	331.00	2,397.4	378.1	-249.5	452.5	0.32	0.21	-1.06
2,546.0	13.80	333.10	2,487.9	397.1	-259.6	474.0	1.01	0.86	2.26
2,640.0	14.30	333.60	2,579.0	417.5	-269.8	496.7	0.55	0.53	0.53
2,743.0	16.10	334.30	2,678.4	441.8	-281.7	523.7	1.76	1.75	0.68
2,827.0	16.10	332.50	2,759.1	462.6	-292.1	546.9	0.59	0.00	-2.14
2,921.0	17.10	332.70	2,849.2	486.4	-304.5	573.7	1.07	1.06	0.21
3,015.0	15.20	329.80	2,939.5	509.4	-317.0	599.8	2.20	-2.02	-3.09
3,108.0	15.60	330.80	3,029.2	530.8	-329.2	624.5	0.52	0.43	1.08
3,202.0	14.80	331.10	3,119.9	552.4	-341.2	649.1	0.86	-0.85	0.32
3,296.0	14.00	331.50	3,210.9	572.9	-352.4	672.5	0.86	-0.85	0.43
3,389.0	13.30	331.70	3,301.3	592.2	-362.9	694.4	0.75	-0.75	0.22
3,483.0	14.20	331.70	3,392.6	611.8	-373.5	716.8	0.96	0.96	0.00
3,577.0	13.30	329.80	3,483.9	631.3	-384.4	739.1	1.07	-0.96	-2.02
3,670.0	12.20	330.00	3,574.6	649.1	-394.7	759.6	1.18	-1.18	0.22
3,764.0	11.40	332.10	3,666.6	665.9	-404.0	778.8	0.97	-0.85	2.23
3,858.0	9.40	331.80	3,759.1	680.9	-411.9	795.8	2.13	-2.13	-0.32
3,951.0	9.60	332.70	3,850.8	694.5	-419.1	811.1	0.27	0.22	0.97
4,045.0	9.60	331.30	3,943.5	708.3	-426.4	826.8	0.25	0.00	-1.49
4,139.0	7.60	331.70	4,036.4	720.7	-433.2	840.8	2.13	-2.13	0.43
4,232.0	6.30	339.60	4,128.8	730.8	-437.8	852.0	1.73	-1.40	8.49
4,326.0	4.20	345.30	4,222.4	739.0	-440.5	860.3	2.30	-2.23	6.06
4,420.0	0.90	338.90	4,316.2	743.0	-441.7	864.4	3.52	-3.51	-6.81
4,513.0	1.10	1.20	4,409.2	744.6	-441.9	865.9	0.47	0.22	23.98
4,607.0	0.40	258.30	4,503.2	745.4	-442.2	866.7	1.33	-0.74	-109.47
4,701.0	0.80	246.80	4,597.2	745.1	-443.1	866.9	0.44	0.43	-12.23
4,794.0	0.50	283.20	4,690.2	745.0	-444.1	867.3	0.53	-0.32	39.14
4,888.0	1.30	323.30	4,784.2	745.9	-445.2	868.6	1.03	0.85	42.66
4,982.0	2.10	333.90	4,878.2	748.3	-446.6	871.4	0.91	0.85	11.28
5,075.0	1.50	359.60	4,971.1	751.1	-447.3	874.2	1.07	-0.65	27.63
5,103.6	1.22	7.85	4,999.7	751.7	-447.3	874.7	1.18	-0.96	28.84
DRILL TARGET BHL 1250'FSL, 75'FWL									
5,169.0	0.80	45.80	5,065.1	752.7	-446.9	875.4	1.18	-0.65	58.03
5,263.0	0.90	43.90	5,159.1	753.7	-445.9	875.7	0.11	0.11	-2.02
5,356.0	0.80	38.50	5,252.1	754.8	-445.0	876.2	0.14	-0.11	-5.81
5,450.0	0.50	346.30	5,346.1	755.7	-444.6	876.8	0.67	-0.32	-55.53
5,544.0	0.20	81.50	5,440.1	756.1	-444.6	877.1	0.59	-0.32	101.28
5,603.9	0.32	98.23	5,499.9	756.1	-444.3	877.0	0.24	0.21	27.95
PERMIT TARGET BHL 1250'FSL, 50'FWL									
5,637.0	0.40	102.80	5,533.1	756.0	-444.1	876.8	0.24	0.23	13.79
5,731.0	0.30	110.00	5,627.1	755.9	-443.6	876.4	0.12	-0.11	7.66

Company:	EnCana Oil & Gas Weld County CO	Local Co-ordinate Reference:	Well Martinson 0-6-24
Project:	SEC.24-T4N-R66W	TVD Reference:	WELL @ 4757.0ft (Original Well Elev)
Site:	Martinson 0-6-24 Pad Sec.24-T4N-R66W	MD Reference:	WELL @ 4757.0ft (Original Well Elev)
Well:	Martinson 0-6-24	North Reference:	True
Wellbore:	Wellbore #1	Survey Calculation Method:	Minimum Curvature
Design:	Wellbore #1	Database:	Landmark

Survey									
Measured Depth (ft)	Inclination (°)	Azimuth (°)	Vertical Depth (ft)	+N/-S (ft)	+E/-W (ft)	Vertical Section (ft)	Dogleg Rate (°/100ft)	Build Rate (°/100ft)	Turn Rate (°/100ft)
5,825.0	0.60	93.20	5,721.1	755.8	-442.8	875.9	0.35	0.32	-17.87
5,918.0	0.20	259.20	5,814.1	755.7	-442.5	875.7	0.86	-0.43	178.49
6,012.0	0.30	158.70	5,908.1	755.5	-442.6	875.5	0.41	0.11	-106.92
6,106.0	0.40	281.80	6,002.1	755.3	-442.8	875.5	0.66	0.11	130.96
6,199.0	0.30	180.40	6,095.1	755.1	-443.1	875.5	0.59	-0.11	-109.03
6,293.0	0.40	257.70	6,189.1	754.8	-443.4	875.4	0.47	0.11	82.23
6,387.0	0.30	10.80	6,283.1	755.0	-443.7	875.7	0.62	-0.11	120.32
6,480.0	0.50	282.30	6,376.1	755.3	-444.1	876.2	0.62	0.22	-95.16
6,575.0	0.10	143.60	6,471.1	755.3	-444.4	876.4	0.61	-0.42	-146.00
6,669.0	0.40	226.70	6,565.1	755.0	-444.6	876.2	0.43	0.32	88.40
6,763.0	0.30	191.90	6,659.1	754.6	-444.9	876.0	0.24	-0.11	-37.02
6,858.0	0.40	250.40	6,754.1	754.2	-445.3	875.8	0.37	0.11	61.58
6,952.0	0.40	156.10	6,848.1	753.8	-445.5	875.6	0.62	0.00	-100.32
7,046.0	0.40	205.80	6,942.0	753.2	-445.5	875.1	0.36	0.00	52.87
7,140.0	0.70	178.20	7,036.0	752.3	-445.6	874.4	0.42	0.32	-29.36
7,235.0	0.40	197.10	7,131.0	751.4	-445.7	873.7	0.36	-0.32	19.89
7,329.0	0.40	251.70	7,225.0	751.0	-446.1	873.5	0.39	0.00	58.09
7,423.0	0.40	334.20	7,319.0	751.2	-446.5	873.9	0.56	0.00	87.77
7,518.0	0.30	94.80	7,414.0	751.5	-446.4	874.1	0.64	-0.11	126.95
7,612.0	0.30	87.80	7,508.0	751.5	-445.9	873.8	0.04	0.00	-7.45
7,706.0	0.40	337.90	7,602.0	751.8	-445.8	874.0	0.61	0.11	-116.92
7,800.0	0.30	327.50	7,696.0	752.3	-446.1	874.6	0.13	-0.11	-11.06
7,912.0	0.70	10.30	7,808.0	753.2	-446.1	875.4	0.47	0.36	38.21
7,957.0	0.70	10.30	7,853.0	753.8	-446.0	875.8	0.00	0.00	0.00
HARD LINES 75°W OF DRILL TARGET BHL									

Checked By: _____ Approved By: _____ Date: _____