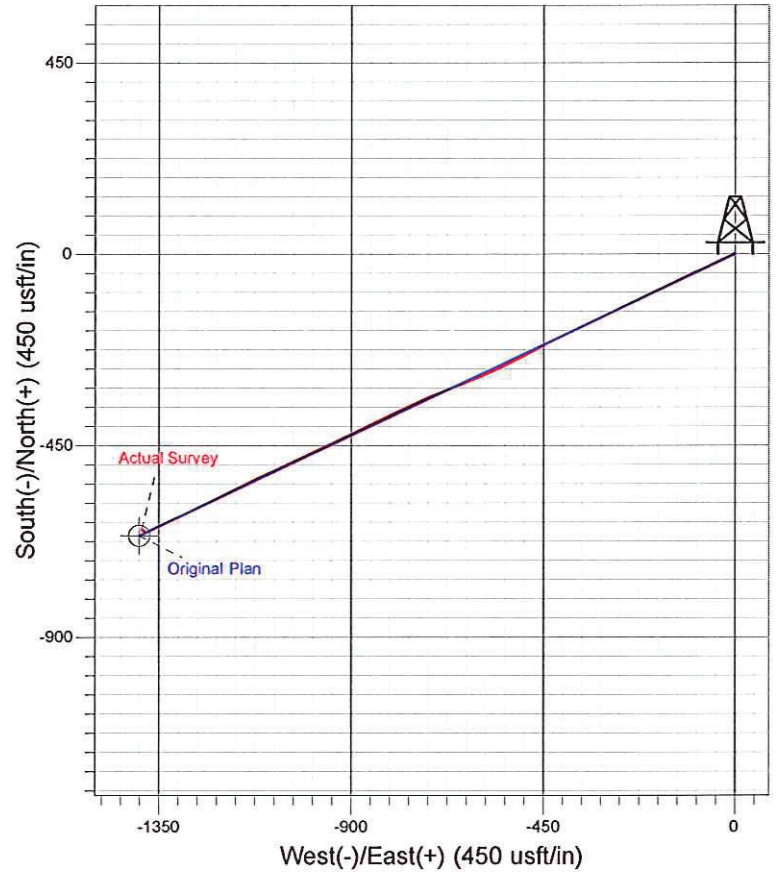
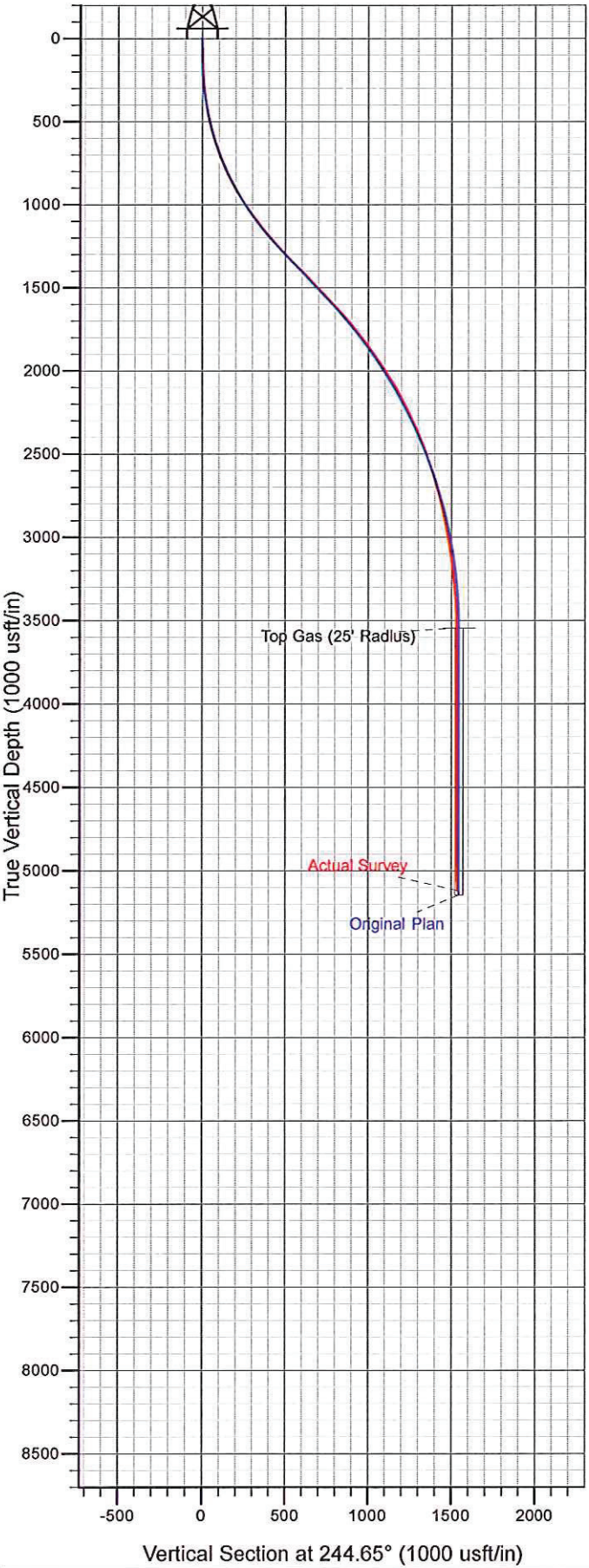




Surface Location: SG 14-23 Pad
North American Datum 1983 , US State Plane 1983 . Colorado Central Zone
Ground Elevation: 5070.00
+N/-S +E/-W Northing Easting Latitude Longitude Slot
0.00 0.00 1587597.10 2269416.20 39° 25' 5.395 N 108° 5' 10.939 W A3
KELLY BUSHING @ 5094.00usft (H&P 280 (24' RKB) kjs)



Azimuths to True North
Magnetic North: 10.32°
Magnetic Field
Strength: 52152.1snT
Dip Angle: 65.64°
Date: 12/16/2011
Model: IGRF2010