

---

**WILLIAMS PRODUCTION RMT INC - EBUS**

---

**SG 44-22  
GRAND VALLEY  
Garfield County , Colorado**

**Cement Surface Casing  
18-Dec-2011**

**Job Site Documents**

*The Road to Excellence Starts with Safety*

Sold To #: 300721		Ship To #: 2891541		Quote #:		Sales Order #: 9069459	
Customer: WILLIAMS PRODUCTION RMT INC - EBUS				Customer Rep: Wilson, W.C.			
Well Name: SG		Well #: 44-22		API/UWI #: 05-045-07260			
Field: GRAND VALLEY		City (SAP): PARACHUTE		County/Parish: Garfield		State: Colorado	
Lat: N 39.417 deg. OR N 39 deg. 25 min. 2.852 secs.				Long: W 108.089 deg. OR W -109 deg. 54 min. 40.23 secs.			
Contractor: H&P Drilling		Rig/Platform Name/Num: H&P 280					
Job Purpose: Cement Surface Casing							
Well Type: Development Well				Job Type: Cement Surface Casing			
Sales Person: SCOTT, KYLE		Srvs Supervisor: NICKLE, RYON		MBU ID Emp #: 454759			
Job Personnel							
HES Emp Name	Exp Hrs	Emp #	HES Emp Name	Exp Hrs	Emp #	HES Emp Name	Exp Hrs
CARTER, ERIC Earl	8	345598	NICKLE, RYON	8	454759	PARKER, BRANDON	8
ROSE, BENJAMIN Keith	8	487022					
Equipment							
HES Unit #	Distance-1 way	HES Unit #	Distance-1 way	HES Unit #	Distance-1 way	HES Unit #	Distance-1 way
10248065	60 mile	10722398	60 mile	10872429	60 mile	11139330	60 mile
11259885	60 mile	11360883	60 mile				
Job Hours							
Date	On Location Hours	Operating Hours	Date	On Location Hours	Operating Hours	Date	Operating Hours
12/18/2011	8	1.25					
TOTAL		Total is the sum of each column separately					
Job				Job Times			
Formation Name				Date	Time	Time Zone	
Formation Depth (MD)	Top	0	Bottom	1450	Called Out	18 - Dec - 2011	02:30
Form Type	BHST			On Location	18 - Dec - 2011	06:30	MST
Job depth MD	1450. ft	Job Depth TVD	1450. ft	Job Started	18 - Dec - 2011	12:23	MST
Water Depth	Wk Ht Above Floor			4. ft	Job Completed	18 - Dec - 2011	13:27
Perforation Depth (MD)	From	To			Departed Loc	18 - Dec - 2011	14:30
Well Data							
Description	New / Used	Max pressure psig	Size in	ID in	Weight lbm/ft	Thread	Grade
13 1/2" Open Hole				13.5			
9 5/8" Surface Casing	New		9.625	9.001	32.3		H-40
Sales/Rental/3 <sup>rd</sup> Party (HES)							
Description	Qty	Qty uom	Depth	Supplier			
PLUG,CMTG,TOP,9 5/8,HWE,8.16 MIN/9.06 MA	1	EA					
Tools and Accessories							
Type	Size	Qty	Make	Depth	Type	Size	Qty
Guide Shoe					Packer		
Float Shoe					Bridge Plug		
Float Collar					Retainer		
Insert Float							
Stage Tool							
Miscellaneous Materials							
Gelling Agt		Conc		Surfactant		Conc	
Treatment Fld		Conc		Inhibitor		Conc	
				Acid Type		Qty	
				Sand Type		Size	

Fluid Data									
Stage/Plug #: 1									
Fluid #	Stage Type	Fluid Name	Qty	Qty uom	Mixing Density lbm/gal	Yield ft <sup>3</sup> /sk	Mix Fluid Gal/sk	Rate bbl/min	Total Mix Fluid Gal/sk
1	Fresh Water		20.00	bbl	8.33	.0	.0	4	
2	VersaCem Lead Cement	VERSACEM (TM) SYSTEM (452010)	215.0	sacks	12.3	2.38	13.75	8	13.75
	13.75 Gal	FRESH WATER							
3	VersaCem Tail Cement	VERSACEM (TM) SYSTEM (452010)	160.0	sacks	12.8	2.11	11.75	8	11.75
	11.75 Gal	FRESH WATER							
4	Displacement Fluid		110.00	bbl	8.34	.0	.0	10	
Calculated Values		Pressures		Volumes					
Displacement	110	Shut In: Instant		Lost Returns	0	Cement Slurry	151.22	Pad	
Top Of Cement	SURFACE	5 Min		Cement Returns	18	Actual Displacement	110	Treatment	
Frac Gradient		15 Min		Spacers	20	Load and Breakdown		Total Job	283.22
Rates									
Circulating	RIG	Mixing	8	Displacement	10	Avg. Job	9		
Cement Left In Pipe	Amount	35.26 ft	Reason	Shoe Joint					
Frac Ring # 1 @	ID	Frac ring # 2 @	ID	Frac Ring # 3 @	ID	Frac Ring # 4 @	ID		
The Information Stated Herein Is Correct				Customer Representative Signature					



*The Road to Excellence Starts with Safety*

Sold To #: 300721		Ship To #: 2891541		Quote #:		Sales Order #: 9069459		
Customer: WILLIAMS PRODUCTION RMT INC - EBUS				Customer Rep: Wilson, W.C.				
Well Name: SG			Well #: 44-22			API/UWI #: 05-045-07260		
Field: GRAND VALLEY		City (SAP): PARACHUTE		County/Parish: Garfield			State: Colorado	
Legal Description:								
Lat: N 39.417 deg. OR N 39 deg. 25 min. 2.852 secs.				Long: W 108.089 deg. OR W -109 deg. 54 min. 40.23 secs.				
Contractor: H&P Drilling			Rig/Platform Name/Num: H&P 280					
Job Purpose: Cement Surface Casing						Ticket Amount:		
Well Type: Development Well			Job Type: Cement Surface Casing					
Sales Person: SCOTT, KYLE			Srv Supervisor: NICKLE, RYON			MBU ID Emp #: 454759		

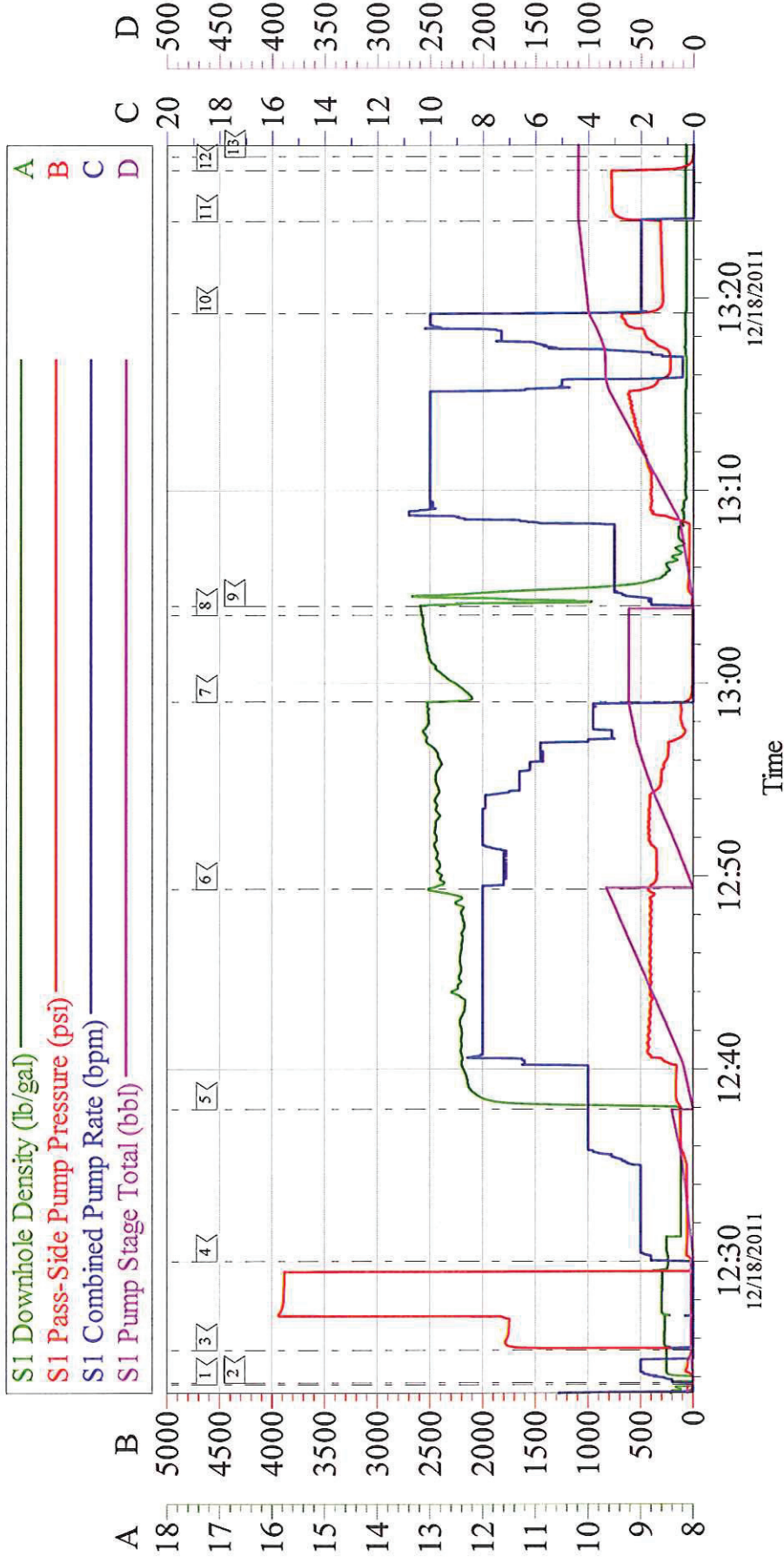
Activity Description	Date/Time	Cht #	Rate bbl/min	Volume bbl		Pressure psig		Comments
				Stage	Total	Tubing	Casing	
Arrive at Location from Other Job or Site	12/18/2011 06:30							RIG PULLING DRILL PIPE
Assessment Of Location Safety Meeting	12/18/2011 06:35							ATTENDED BY ALL HES CREW
Other	12/18/2011 08:14							SPOT EQUIPEMENT; 1 CEMENTERS PICKUP F-550, 1 ELITE PUMPING UNIT, 1 660 BULK TRUCK, 1 400 BODY LOAD. BODY LOAD BLOWN INTO SILO
Pre-Rig Up Safety Meeting	12/18/2011 10:50							ATTENDED BY ALL HES CREW
Rig-Up Equipment	12/18/2011 11:00							
Pre-Job Safety Meeting	12/18/2011 12:05							ATTENDED BY ALL HES CREW, RIG CREW AND COMPANY REP
Start Job	12/18/2011 12:23							TP-1435.8' , TD- 1450' , SJ- 35.26' , LJ- 30' , MW , CASING 1327.32' 9.625" 32.3# H-40 73.18' 9.625" 36# J-55, HOLE- 13.5"
Other	12/18/2011 12:23		2	2			100	FILL LINES; FRESH WATER
Test Lines	12/18/2011 12:25							PRESSURED UP TO 3945 PSI, PRESSURE DROPPED TO 3890 PSI OVER 2 MIN
Pump Spacer 1	12/18/2011 12:30		4	20			144	FRESH WATER
Pump Lead Cement	12/18/2011 12:37		8				441	215 SKS; 12.3 #/GAL, 2.38 FT3 / SK, 13.75 GAL / SK

Activity Description	Date/Time	Cht #	Rate bbl/min	Volume bbl		Pressure psig		Comments
				Stage	Total	Tubing	Casing	
Pump Tail Cement	12/18/2011 12:49		8	60.12			421	160 SKS; 12.8 #/GAL, 2.11 FT3 / SK, 11.75 GAL / SK
Shutdown	12/18/2011 12:59							
Drop Top Plug	12/18/2011 13:03							PLUG LAUNCHED, DRILLER VERIFIED PLUG LAUNCHED
Pump Displacement	12/18/2011 13:04		10	100			760	FRESH WATER, SLOWED RATE TO 1 BBL / MIN AT 80 BBLS AWAY TO ALLOW RIG TO CATCH UP WITH MUD PUMP, RETURNED TO 10 BBLS / MIN AT 90 BBLS AWAY
Slow Rate	12/18/2011 13:19		2	10			337	
Bump Plug	12/18/2011 13:24						337	PLUG LANDED
Check Floats	12/18/2011 13:26						801	FLOATS HELD, 1 BBL RETURNED
End Job	12/18/2011 13:27							GOOD CIRCULATION DURING JOB, 18 BBLS CEMENT TO SURFACE, PIPE WAS NOT MOVED THROUGHOUT JOB
Post-Job Safety Meeting (Pre Rig-Down)	12/18/2011 13:30							ATTENDED BY ALL HES CREW
Rig-Down Equipment	12/18/2011 13:40							
Depart Location Safety Meeting	12/18/2011 14:45							ATTENDED BY ALL HES CREW
Crew Leave Location	12/18/2011 15:00							THANK YOU FOR USING HALLIBURTON CEMENT, RYON NICKLE AND CREW



# WILLIAMS-SG 44-22

## SURFACE



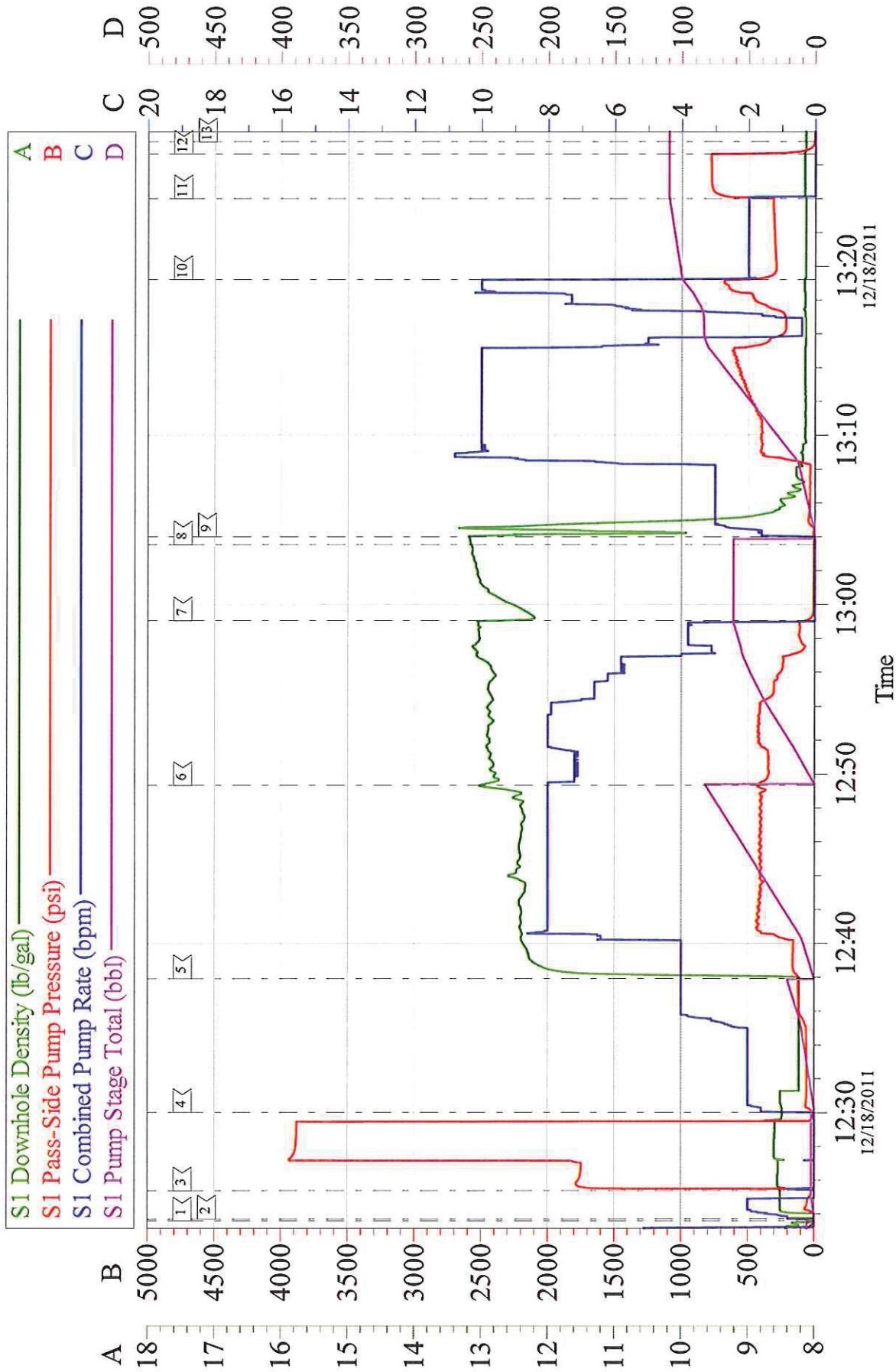
Customer: WILLIAMS PRODUCTION RMT INC - EBUS  
Well Description: SG 44-22  
Company Rep: WC WILSON

Job Date: 18-Dec-2011  
Job Type: SURFACE  
Cement Supervisor: RYON NICKLE

Sales Order #: 9069459  
ADC Used: YES  
Elite #/Operator: #7 / BEN ROSE & ERIC CARTER

# WILLIAMS-SG 44-22

## SURFACE



Customer:	WILLIAMS PRODUCTION RMT INC - EBUS	Job Date:	18-Dec-2011	Sales Order #:	9069459
Well Description:	SG 44-22	Job Type:	SURFACE	ADC Used:	YES
Company Rep:	WC WILSON	Cement Supervisor:	RYON NICKLE	Elite #/Operator:	#7 / BEN ROSE & ERIC CARTER