

HALLIBURTON

WILLIAMS PRODUCTION RMT INC - EBUS

**SG 431-27
GRAND VALLEY
Garfield County , Colorado**

**Cement Surface Casing
12-Oct-2011**

Post Job Report

The Road to Excellence Starts with Safety

Sold To #: 300721	Ship To #: 2881945	Quote #:	Sales Order #: 8513098
Customer: WILLIAMS PRODUCTION RMT INC - EBUS		Customer Rep: Oaks, Rick	
Well Name: SG	Well #: 431-27	API/UWI #:	
Field: GRAND VALLEY	City (SAP): PARACHUTE	County/Parish: Garfield	State: Colorado
Contractor: H&P 278	Rig/Platform Name/Num: H&P 278		
Job Purpose: Cement Surface Casing			
Well Type: Development Well		Job Type: Cement Surface Casing	
Sales Person: KOHL, KYLE		Srvc Supervisor: LEIST, JAMES	MBU ID Emp #: 362787

Job Personnel

HES Emp Name	Exp Hrs	Emp #	HES Emp Name	Exp Hrs	Emp #	HES Emp Name	Exp Hrs	Emp #
EICKHOFF, ROBERT Edward	2	495311	LEIST, JAMES R	2	362787	SALAZAR, PAUL Omar	2	445614
SMITH, CHRISTOPHER Scott	2	452619						

Equipment

HES Unit #	Distance-1 way	HES Unit #	Distance-1 way	HES Unit #	Distance-1 way	HES Unit #	Distance-1 way
10567589C	60 mile	10784064	60 mile	10856958	60 mile	10995027	60 mile
11259882	60 mile						

Job Hours

Date	On Location Hours	Operating Hours	Date	On Location Hours	Operating Hours	Date	On Location Hours	Operating Hours
10-12-11	7	0	10-13-11	3	2			
TOTAL			Total is the sum of each column separately					

Job

Job Times

Formation Name	Formation Depth (MD)	Top	Bottom	Called Out	Date	Time	Time Zone
				On Location	12 - Oct - 2011	12:00	MST
Form Type			BHST	Job Started	12 - Oct - 2011	16:30	MST
Job depth MD	1167. ft		Job Depth TVD	Job Started	13 - Oct - 2011	01:22	MST
Water Depth			Wk Ht Above Floor	Job Completed	13 - Oct - 2011	02:24	MST
Perforation Depth (MD)	From		To	Departed Loc	13 - Oct - 2011	03:30	MST

Well Data

Description	New / Used	Max pressure psig	Size in	ID in	Weight lbm/ft	Thread	Grade	Top MD ft	Bottom MD ft	Top TVD ft	Bottom TVD ft
Sales/Rental/3 rd Party (HES)											

Description	Qty	Qty uom	Depth	Supplier
PLUG,CMTG, TOP, 9 5/8, HWE, 8.16 MIN/9.06 MA	1	EA		

Tools and Accessories

Type	Size	Qty	Make	Depth	Type	Size	Qty	Make	Depth	Type	Size	Qty	Make
Guide Shoe					Packer					Top Plug	9.625	1	
Float Shoe					Bridge Plug					Bottom Plug			
Float Collar					Retainer					SSR plug set			
Insert Float										Plug Container	9.625	1	
Stage Tool										Centralizers			

Miscellaneous Materials

Gelling Agt	Conc	Surfactant	Conc	Acid Type	Qty	Conc	%
Treatment Fld	Conc	Inhibitor	Conc	Sand Type	Size	Qty	

Fluid Data

Stage/Plug #: 1										
Fluid #	Stage Type	Fluid Name	Qty	Qty uom	Mixing Density lbm/gal	Yield ft ³ /sk	Mix Fluid Gal/sk	Rate bbl/min	Total Mix Fluid Gal/sk	

Stage/Plug #: 1									
Fluid #	Stage Type	Fluid Name	Qty	Qty uom	Mixing Density lbm/gal	Yield ft ³ /sk	Mix Fluid Gal/sk	Rate bbl/min	Total Mix Fluid Gal/sk
1	Water Spacer		20.00	bbl	8.34	.0	.0	4	
2	Lead Cement	VERSACEM (TM) SYSTEM (452010)	160.0	sacks	12.3	2.38	13.75	8	13.75
3	Tail Cement	VERSACEM (TM) SYSTEM (452010)	160.0	sacks	12.8	2.11	11.75	8	11.75
4	Displacement Fluid		88.00	bbl	8.34	.0	.0	10	
Calculated Values		Pressures		Volumes					
Displacement	88	Shut In: Instant		Lost Returns	0	Cement Slurry	127	Pad	
Top Of Cement	SURFACE	5 Min		Cement Returns	35	Actual Displacement	88	Treatment	
Frac Gradient		15 Min		Spacers	20	Load and Breakdown		Total Job	235
Rates									
Circulating	11	Mixing		8	Displacement	10	Avg. Job		
Cement Left In Pipe	Amount	44.26 ft	Reason	Shoe Joint					
Frac Ring # 1 @	ID	Frac ring # 2 @	ID	Frac Ring # 3 @	ID	Frac Ring # 4 @	ID		
The Information Stated Herein Is Correct				Customer Representative Signature					

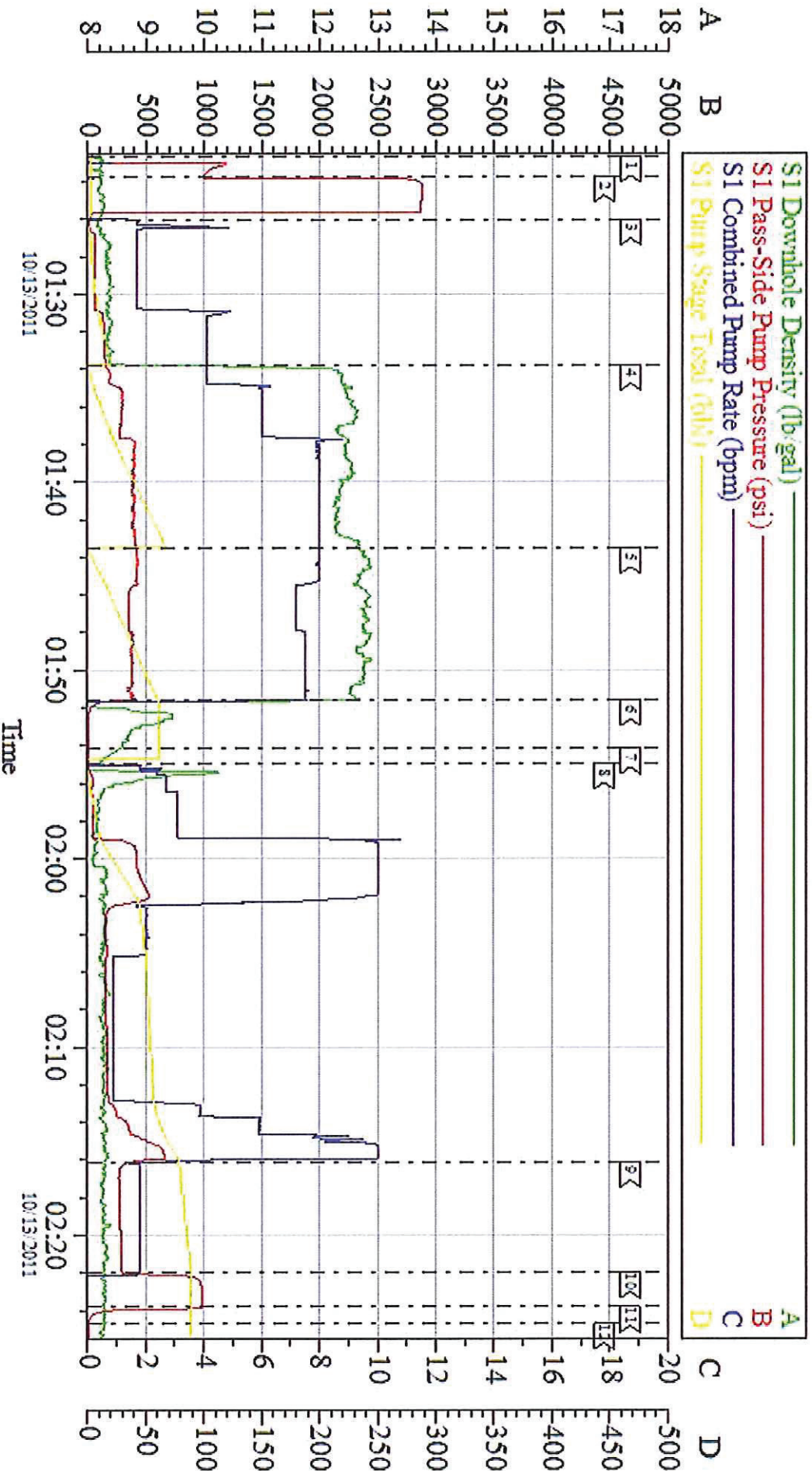
The Road to Excellence Starts with Safety

Sold To #: 300721	Ship To #: 2881945	Quote #:	Sales Order #: 8513098
Customer: WILLIAMS PRODUCTION RMT INC - EBUS		Customer Rep: Oaks, Rick	
Well Name: SG	Well #: 431-27	API/UWI #:	
Field: GRAND VALLEY	City (SAP): PARACHUTE	County/Parish: Garfield	State: Colorado
Legal Description:			
Lat: N 0 deg. OR N 0 deg. 0 min. 0 secs.		Long: E 0 deg. OR E 0 deg. 0 min. 0 secs.	
Contractor: H&P 278	Rig/Platform Name/Num: H&P 278		
Job Purpose: Cement Surface Casing			Ticket Amount:
Well Type: Development Well		Job Type: Cement Surface Casing	
Sales Person: KOHL, KYLE	Srvc Supervisor: LEIST, JAMES	MBU ID Emp #: 362787	

Activity Description	Date/Time	Cht #	Rate bbl/min	Volume bbl		Pressure psig		Comments
				Stage	Total	Tubing	Casing	
Call Out	10/12/2011 12:00							
Pre-Convoy Safety Meeting	10/12/2011 14:00							WITH ALL HES PERSONNEL
Arrive At Loc	10/12/2011 16:30							RIG PULLING PIPE
Pre-Rig Up Safety Meeting	10/12/2011 23:30							WITH ALL ON HES PERSONNEL
Rig-Up Completed	10/13/2011 00:30							RIG CIRULATED FOR 1.5 HOURS PRIOR TO CMT JOB WITH 425 PSI @ 11 BPM, YP-24, PV-28, TEMP-94
Pre-Job Safety Meeting	10/13/2011 01:00							WITH ALL ON LOCATION PERSONNEL
Start Job	10/13/2011 01:22							TD 1205', TP 1167.3', SJ 44.26', OH 13.5", CSG 9.625" 32.3#, MUD 10.0 PPG
Pressure Test	10/13/2011 01:23							2880 PSI HIGH PRESSURE TEST, ALL LINES HELD PSI
Pump Spacer	10/13/2011 01:26		4	20			135.0	FRESH WATER
Pump Lead Cement	10/13/2011 01:33		8	67			390.0	160 SKS, 12.3 PPG, 2.38 FT3/SK, 13.75
Pump Tail Cement	10/13/2011 01:43		7	60			370.0	160 SKS, 12.8 PPG, 2.11 FT3/SK, 11.75GAL/SK
Shutdown	10/13/2011 01:51							TO DROP TOP PLUG
Drop Top Plug	10/13/2011 01:54							COMP. REP. VERIFIED PLUG WENT, WASH UP ON TOP OF PLUG

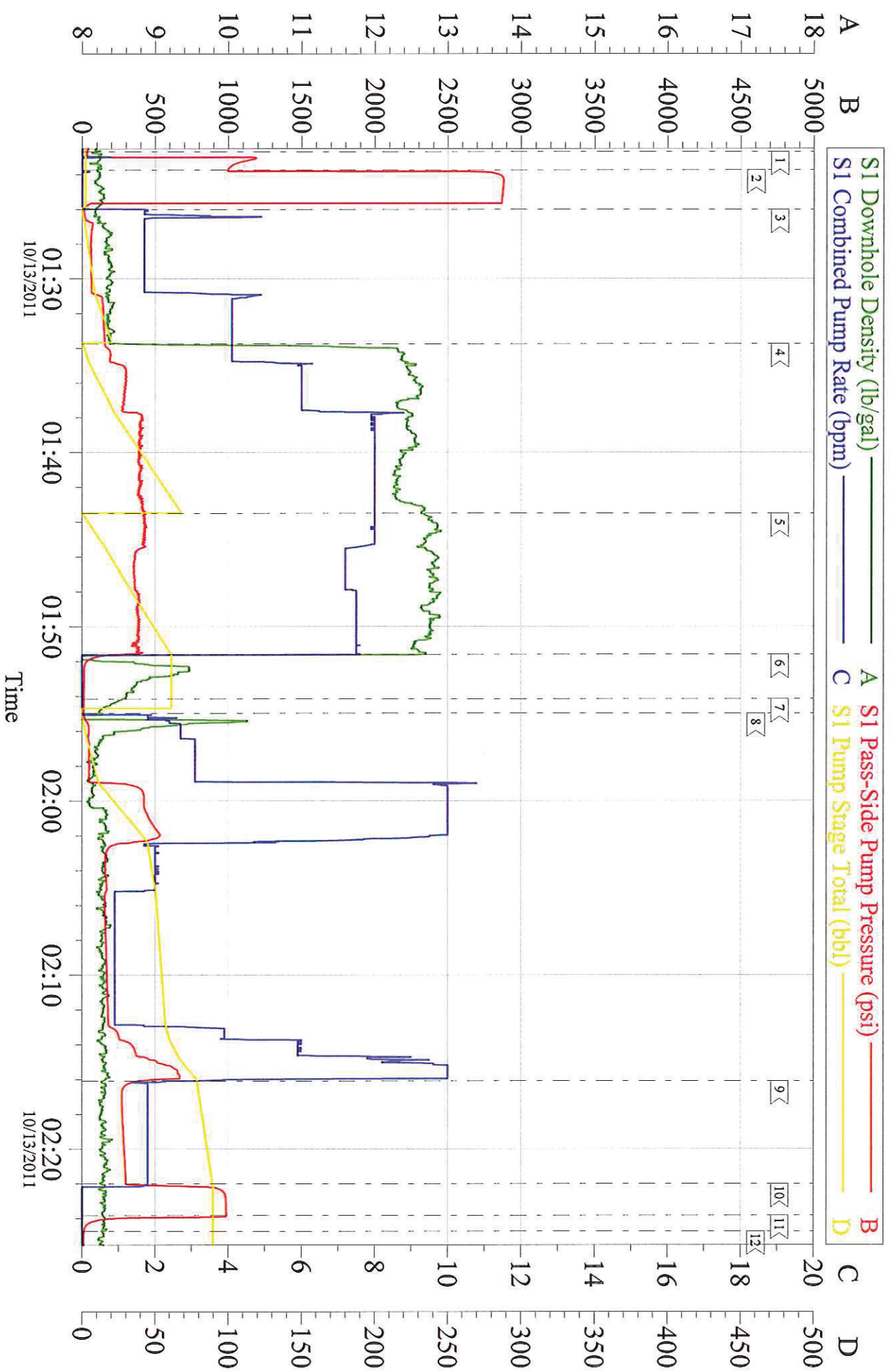
Activity Description	Date/Time	Cht #	Rate bbl/min	Volume bbl		Pressure psig		Comments
				Stage	Total	Tubing	Casing	
Pump Displacement	10/13/2011 01:54		10	88			570.0	FRESH WATER, 35 BBLs CMT TO SURFACE. HAD TO SLOW RATE RIG PUMP WOULD NOT KEEP UP WITH RETURNS
Slow Rate	10/13/2011 02:16		2	77			270.0	TO BUMP PLUG
Bump Plug	10/13/2011 02:22		2	88			295.0	PLUG BUMPED
Check Floats	10/13/2011 02:23						960.0	FLOATS HELD
End Job	10/13/2011 02:24							
Pre-Rig Down Safety Meeting	10/13/2011 02:30							WITH ALL HES PERSONNEL
Rig-Down Completed	10/13/2011 03:20							
Pre-Convoy Safety Meeting	10/13/2011 04:00							WITH ALL HES PERSONNEL
Comment	10/13/2011 04:00							THANKYOU FOR USING HALLIBURTON CEMENT, JAMES LEIST AND CREW

WILLIAMS PRODUCTION 9.625 SURFACE CASING



Customer: WILLIAMS PRODUCTION RMT INC - EBUS	Job Date: 13-Oct-2011	Sales Order #: S513098
Well Description: SG 431-27	Job Type: SURFACE	ADC Used: YES
Company Rep: RICK OAKS	Cement Supervisor: JAMES LEIST	Elite #: 3 PAUL SALAZAR

WILLIAMS PRODUCTION 9.625 SURFACE CASING



Customer:	WILLIAMS PRODUCTION RMT INC - EBUS	Job Date:	13-Oct-2011	Sales Order #:	8513098
Well Description:	SG 431-27	Job Type:	SURFACE	ADC Used:	YES
Company Rep:	RICK OAKS	Cement Supervisor:	JAMES LEIST	Elite #:	PAUL SALAZAR