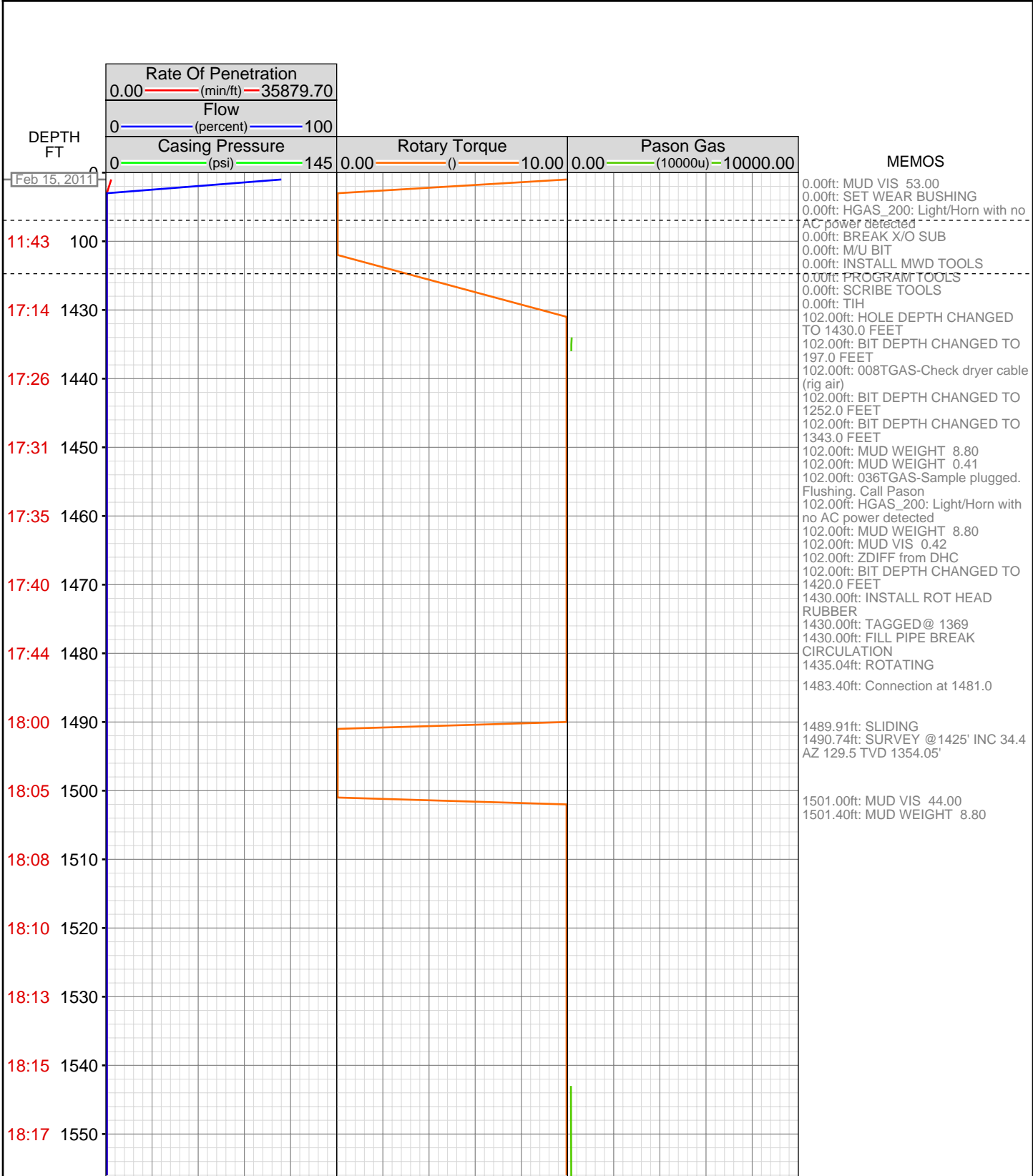


DataHub EDR Log

Fri Feb 25, 2011 10:38:41
Well Dossier 1297742038
Marilyn Tucker

OPERATOR: EnCana Oil & Gas (USA), Inc.	CONTRACTOR: Patterson-UTI Drilling Company
WELL: NPMF 11A-16 H17 696	UNIQUE WELL ID: 05-045-18702-00
FIELD:	SPUD DATE: Feb 15, 2011 17:30
LOCATION: Qtr:SENE,Sec:17,Twp:6S,Rng:96W,Meridian	RELEASE DATE: Feb 22, 2011 19:00
COUNTRY: USA	
RIG: Pat-UTI 303	



18:19 1560
18:23 1570
18:43 1580
18:46 1590
18:48 1600
18:49 1610
18:51 1620
18:52 1630
18:54 1640
18:56 1650
18:57 1660
19:17 1670
19:19 1680
19:21 1690
19:23 1700
19:24 1710
19:26 1720
19:27 1730
19:29 1740
19:30 1750
19:45 1760
19:47 1770

1572.74ft: Connection at 1572.6
1572.74ft: SLIDING
1573.00ft: ZWOB from SideKick sk-06-03-3103
1573.75ft: ZDiffPressure from SideKick sk-06-03-3103
1584.00ft: IN TALLY: HOLE DEPTH SET TO 1572.6
1584.00ft: ZDIFF from DHC
1589.00ft: 008TGAS-Check dryer cable (rig air)
1591.78ft: SURVEY @1517' INC 36.3 AZ 132.1 TVD 1429.09'

1665.00ft: ZWOB from DHC
1669.01ft: SURVEY 1614' INC 39.6 AZ 130.4 TVD 1505.57'
1676.00ft: HOOKLOAD WAS RECALIBRATED
1676.90ft: Connection at 1664.2
1677.00ft: HOOKLOAD WAS RECALIBRATED
1678.00ft: MUD VIS 46.00
1678.00ft: MUD WEIGHT 8.80
1678.00ft: HOOK LOAD THRESHOLD RECALIBRATED TO 35
1678.00ft: HOOKLOAD WAS RECALIBRATED
1678.00ft: ZDiffPressure from SideKick sk-06-03-3103
1678.00ft: ZWOB from SideKick sk-06-03-3103
1679.00ft: IN TALLY: HOLE DEPTH SET TO 1664.2

1766.00ft: IN TALLY: HOLE DEPTH SET TO 1755.7
1766.34ft: SURVEY @1700' JNC 41.4 AZ 130.5 TVD 1570.96'
1766.34ft: Connection at 1755.7

19:49 1780
19:51 1790
19:53 1800
19:54 1810
19:56 1820
19:58 1830
20:00 1840
20:02 1850
20:14 1860
20:16 1870
20:18 1880
20:19 1890
20:22 1900
20:24 1910
20:26 1920
20:29 1930
20:32 1940
20:45 1950
20:48 1960
20:49 1970
20:51 1980
20:52 1990

1849.56ft: SURVEY @1792' JNC 41.9
AZ 129.7 TVD 1639.71'
1856.00ft: ZWOB from SideKick
sk-06-03-3103
1856.57ft: Connection at 1847.3
1857.00ft: ZDIFF from DHC
1858.00ft: IN TALLY: HOLE DEPTH
SET TO 1847.3

1947.00ft: MUD VIS 48.00
1947.00ft: MUD WEIGHT 8.85
1947.67ft: SURVEY @1883' INC 42.1
AZ 129.3 TVD 1707.19'
1947.67ft: Connection at 1939.0
1949.00ft: IN TALLY: HOLE DEPTH
SET TO 1939.0

20:54 2000
20:56 2010
20:58 2020
20:59 2030
21:09 2040
21:13 2050
21:15 2060
21:17 2070
21:19 2080
21:22 2090
21:24 2100
21:26 2110
21:28 2120
21:45 2130
21:47 2140
21:50 2150
21:52 2160
21:54 2170
21:56 2180
21:57 2190
22:00 2200
22:02 2210

2020.00ft: HGAS_200: Light/Horn with no AC power detected

2037.92ft: SURVEY @1975 INC 42.7
AZ 128.7 TVD 1775.13'
2040.00ft: Connection at 2030.5
2040.00ft: IN TALLY: HOLE DEPTH SET TO 2030.5

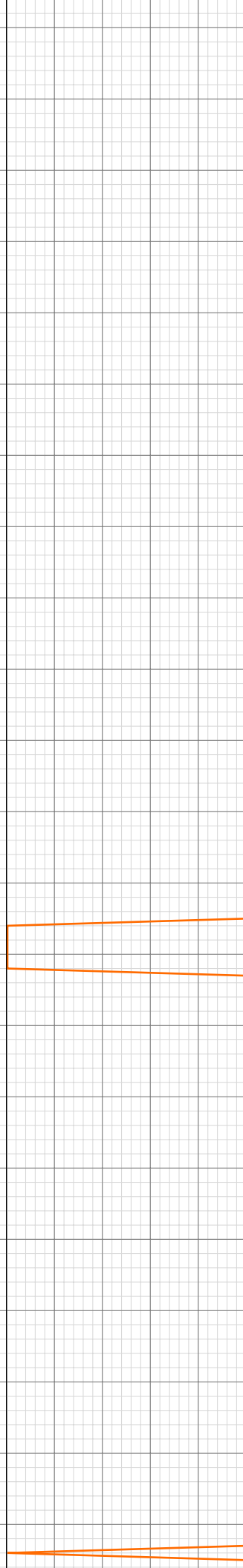
2109.49ft: HGAS_200: Light/Horn with no AC power detected

2123.59ft: SLIDING

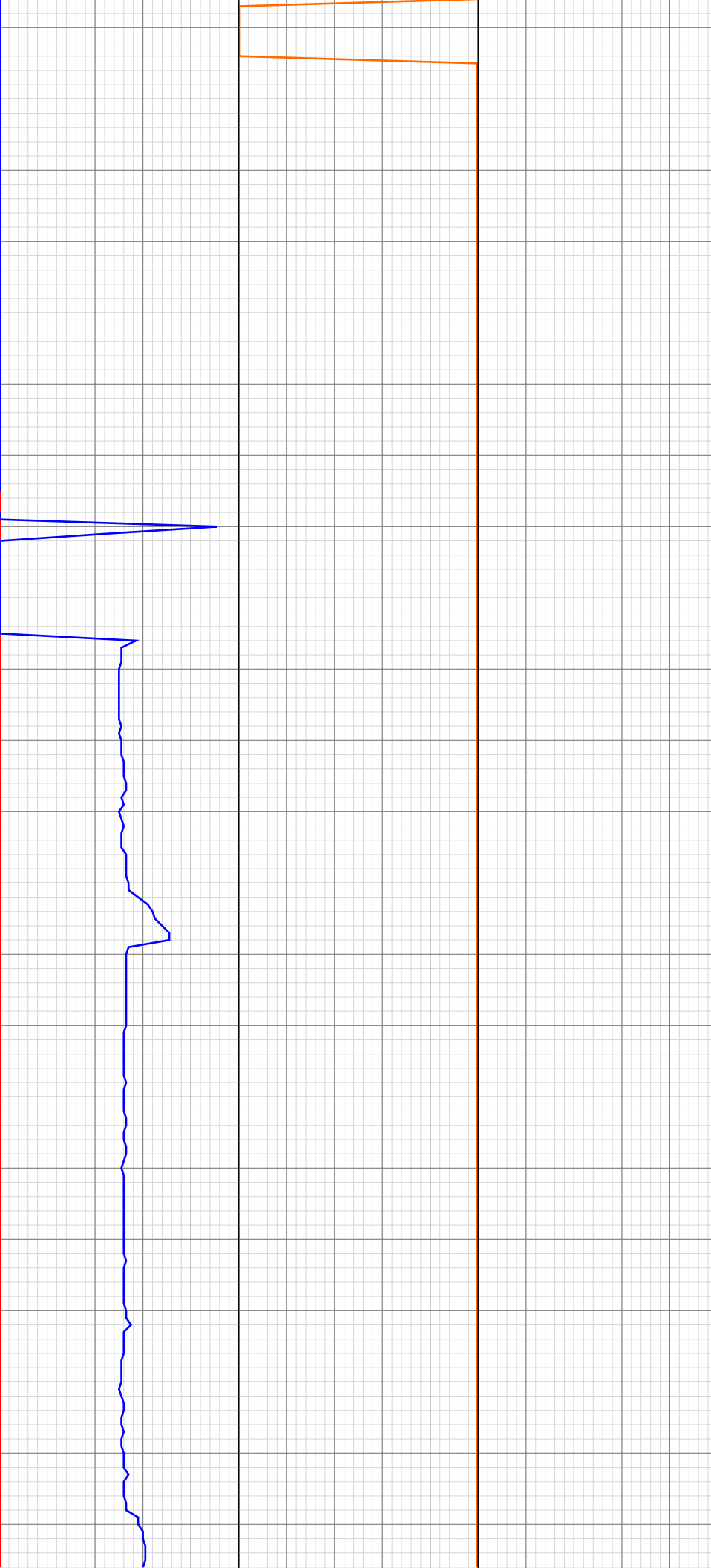
2130.01ft: SURVEY @2066' INC 43.3
AZ 127.6 TVD 1841.68'
2131.00ft: DEPTH RECALIBRATED TO 0.0207119733

2140.69ft: ROTATING
2142.00ft: IN TALLY: HOLE DEPTH SET TO 2122.0
2142.98ft: Connection at 2122.0

2215.00ft: MUD VIS 45.00
2215.00ft: MUD WEIGHT 8.90
2216.00ft: HGAS_200: Light/Horn with no AC power detected



22:16 2220
22:19 2230
22:21 2240
22:24 2250
22:26 2260
22:28 2270
22:30 2280
22:32 2290
22:34 2300
22:45 2310
22:47 2320
22:50 2330
22:54 2340
22:57 2350
23:00 2360
23:03 2370
23:05 2380
23:07 2390
23:10 2400
23:22 2410
23:25 2420
23:27 2430



2217.37ft: SURVEY @2158' INC 42.7
AZ 128.6 TVD 1908.97'
2217.37ft: Connection at 2213.6
2218.00ft: ZWOB from SideKick
sk-06-03-3103
2219.00ft: IN TALLY: HOLE DEPTH
SET TO 2213.6

2240.00ft: ZWOB from SideKick
sk-06-03-3103

2306.00ft: ZWOB from DHC
2306.08ft: Connection at 2305.1
2306.08ft: SURVEY @2250 INC 42.6
AZ 130.9 TVD 1976.64'

2321.00ft: 022TGAS-Trap needs
service
2322.00ft: 046TGAS-Analyzer air
pressure = zero, check air supply.
Standby

2382.00ft: MUD VIS 46.00
2382.00ft: MUD WEIGHT 9.00

2401.00ft: 021TGAS 03090332
SW0.30 HW30.00 - 89 days on
2401.00ft: ZWOB from DHC
2401.15ft: Connection at 2396.7
2401.15ft: SURVEY @2341' INC 42.8
AZ 129.9 TVD 2043.52'
2401.15ft: 008TGAS-Check dryer
cable (rig air)

23:29 2440
23:31 2450
23:33 2460
23:36 2470
23:38 2480
23:40 2490
23:52 2500
23:55 2510
23:57 2520
23:59 2530
Feb 16, 2011
00:01 2540
00:04 2550
00:06 2560
00:08 2570
00:20 2580
00:23 2590
00:27 2600
00:29 2610
00:31 2620
00:33 2630
00:35 2640
00:37 2650

2466.00ft: 042TGAS-Check dryer
cable (unplugged?)
2466.00ft: 022TGAS-Trap needs
service

2493.00ft: 021TGAS 05121609
SW0.30 HW30.00 - 0 days on
2493.00ft: 008TGAS-Check dryer
cable (rig air)
2493.00ft: ZDIFF from DHC
2493.98ft: SURVEY @2433' INC 42.3
AZ 129.5 TVD 2111.29'
2493.98ft: Connection at 2488.3
2494.00ft: IN TALLY: HOLE DEPTH
SET TO 2488.3

2511.00ft: MUD VIS 50.00
2511.00ft: MUD WEIGHT 8.95

2559.00ft: 036TGAS-Sample plugged.
Flushing. Call Pason

2581.85ft: Connection at 2579.9
2581.85ft: SURVEY @2524' INC 41.5
AZ 130.6 TVD 2179.30'
2583.00ft: IN TALLY: HOLE DEPTH
SET TO 2579.9

00:40 2660
00:43 2670
00:54 2680
00:56 2690
00:58 2700
01:00 2710
01:03 2720
01:05 2730
01:08 2740
01:13 2750
01:16 2760
01:26 2770
01:28 2780
01:31 2790
01:33 2800
01:35 2810
01:38 2820
01:41 2830
01:44 2840
01:46 2850
01:48 2860
02:02 2870



2672.00ft: ZDIFF from DHC
2672.00ft: ZWOB from DHC
2672.49ft: Connection at 2671.5
SURVEY @2616' INC 40.6 AZ 128.4
TVD 2248.41'

2752.00ft: MUD VIS 52.00
2753.00ft: MUD WEIGHT 8.95

2767.27ft: Connection at 2763.1
2768.87ft: SURVEY @2708' INC
38.9 AZ 128.5 TVD 2319.14'

2861.95ft: SURVEY @2799' INC 38.3
AZ 128.7 TVD 2390.26' Connection at
2854.7
2864.00ft: IN TALLY: HOLE DEPTH
SET TO 2854.7

02:04 2880
02:06 2890
02:08 2900
02:11 2910
02:14 2920
02:17 2930
02:19 2940
02:31 2950
02:35 2960
02:39 2970
02:42 2980
02:46 2990
02:50 3000
02:53 3010
02:55 3020
02:57 3030
03:00 3040
03:12 3050
03:16 3060
03:19 3070
03:21 3080
03:24 3090

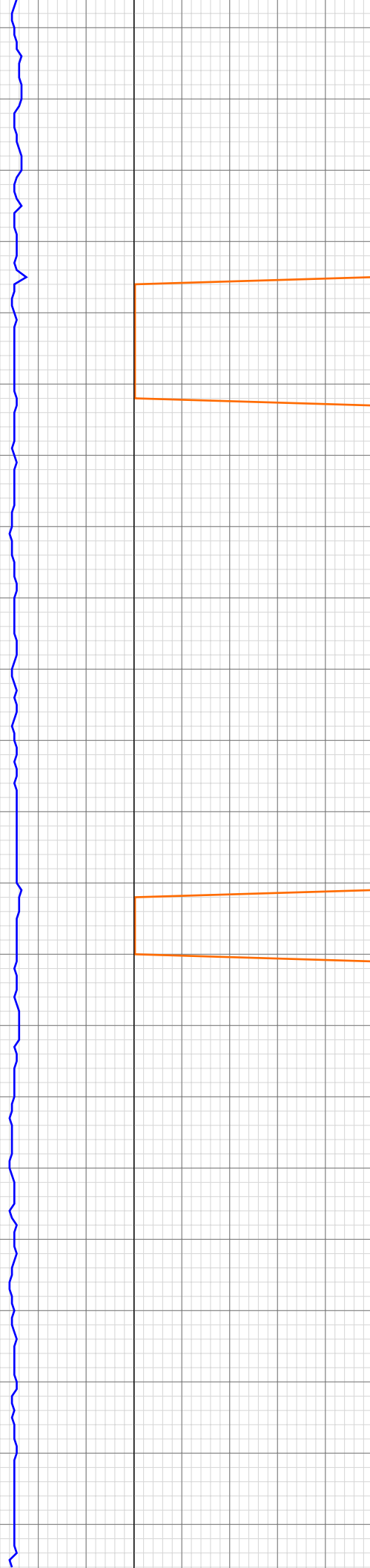


2919.00ft: MUD VIS 53.00
2919.00ft: MUD WEIGHT 8.95

2946.98ft: SURVEY @2891' INC 37.6
AZ 128.1 TVD 2390.26
2947.00ft: ZWOB from DHC
2947.25ft: Connection at 2946.2

3042.09ft: Connection at 3037.5
3042.09ft: SURVEY @2982' INC 37.8
AZ 127.7 TVD 2534.81'

03:27 3100
03:31 3110
03:35 3120
03:40 3130
04:05 3140
04:10 3150
04:14 3160
04:17 3170
04:24 3180
04:29 3190
04:34 3200
04:37 3210
04:39 3220
05:04 3230
05:08 3240
05:13 3250
05:17 3260
05:20 3270
05:24 3280
05:26 3290
05:28 3300
05:31 3310



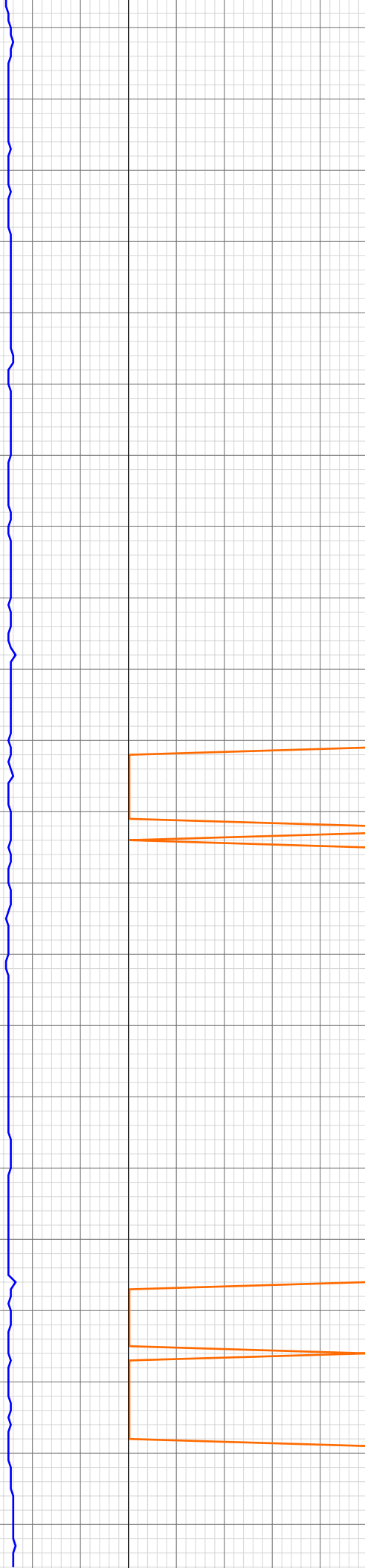
3134.00ft: ZDIFF from DHC
3134.68ft: Connection at 3129.0
3134.82ft: SLIDING
3135.71ft: SURVEY @3074 INC 36.3
AZ 128.3 TVD 2608.23'

3154.00ft: ZDIFF from DHC
3154.25ft: ROTATING
3157.00ft: MUD VIS 53.00
3157.00ft: MUD WEIGHT 9.00

3228.00ft: MUD VIS 54.00
3228.00ft: MUD WEIGHT 9.00
3228.00ft: IN TALLY: HOLE DEPTH
SET TO 3220.6
3228.71ft: SURVEY @3165' INC 36.8
AZ 131.6 TVD 2681.33'
3228.71ft: Connection at 3220.6
3228.71ft: SPR'S
3228.71ft: ZDIFF from DHC

3313.62ft: Connection at 3312.3
3313.62ft: ROTATING

05:42 3320
05:45 3330
05:48 3340
05:52 3350
05:55 3360
06:00 3370
06:04 3380
06:08 3390
06:12 3400
06:37 3410
06:41 3420
06:50 3430
06:55 3440
06:57 3450
07:00 3460
07:03 3470
07:06 3480
07:09 3490
07:32 3500
07:37 3510
07:43 3520
07:45 3530



3315.72ft: SURVEY @ 3257 INC 36.4
AZI 132.7 TVD 2755.20

3323.00ft: 008TGAS-Check dryer
cable (rig air)

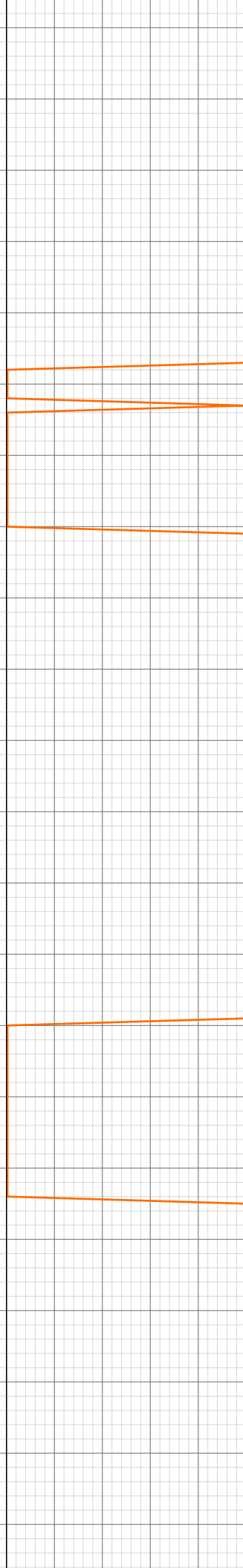
3402.99ft: MUD VIS 0.53
3402.99ft: MUD WEIGHT 9.10
3406.99ft: 036TGAS-Sample plugged.
Flushing. Call Pason
3407.41ft: SURVEY @3348 INC 35.7
AZI 130.3 TVD 2828.78 ROTATING
3408.01ft: ZERO ALL PUMPS from
SideKick sk-06-03-3103
3408.01ft: ZDiffPressure from
SideKick sk-06-03-3103
3408.01ft: ZWOB from SideKick
sk-06-03-3103
3408.89ft: Connection at 3403.7
3415.78ft: PUMP SWEEP
3420.01ft: ZERO ALL PUMPS from
SideKick sk-05-05-1268
3420.05ft: SLIDING
3420.05ft: SLIDING

3439.70ft: PUMP SWEEP ROTATING

3449.02ft: ZERO ALL PUMPS from
SideKick sk-05-05-1268

3495.11ft: Connection at 3495.1
3495.11ft: SURVEY @ 3440 INC 33.4
AZI 132.5 TVD 2904.55
3495.11ft: SLIDING
3496.00ft: ZDiffPressure from
SideKick sk-06-03-3103
3502.00ft: MUD WEIGHT 9.10
3502.33ft: MUD VIS 0.52
3504.00ft: IN TALLY: HOLE DEPTH
SET TO 3495.1
3504.00ft: ZWOB from SideKick
sk-06-03-3103
3504.00ft: ZDiffPressure from
SideKick sk-06-03-3103
3516.01ft: TRANSFERRED 0.00
3518.77ft: ROTATING

07:48 3540
07:53 3550
07:56 3560
07:58 3570
08:00 3580
08:23 3590
08:29 3600
08:33 3610
08:42 3620
08:45 3630
08:47 3640
08:49 3650
08:52 3660
08:55 3670
09:10 3680
09:15 3690
09:19 3700
09:28 3710
09:31 3720
09:34 3730
09:37 3740
09:40 3750



3539.99ft: TRANSFERRED 32.00

3586.55ft: IN TALLY: HOLE DEPTH SET TO 3586.6
3586.55ft: Connection at 3586.6
3586.81ft: SURVEY @ 3531 INC 31.5 AZI 132.3
3586.81ft: SLIDING
3589.01ft: MUD VIS 0.48
3589.01ft: MUD WEIGHT 9.20
3589.01ft: ZDiffPressure from SideKick sk-06-03-3103
3589.01ft: ZWOB from SideKick sk-06-03-3103

3610.01ft: ZDiffPressure from SideKick sk-06-03-3103
3610.01ft: ZWOB from SideKick sk-06-03-3103
3610.01ft: ZDiffPressure from SideKick sk-06-03-3103
3610.47ft: ROTATING

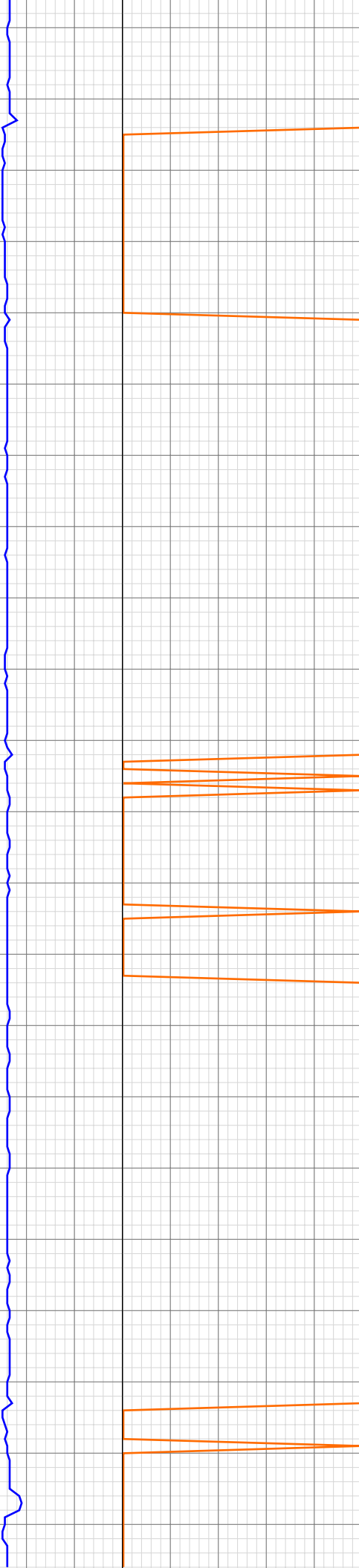
3654.00ft: ZERO ALL PUMPS from SideKick sk-05-05-1268

3678.08ft: Connection at 3678.1
3678.08ft: SURVEY @ 3623 INC 28.2 AZI 134.5 TVD 3061.12
3678.12ft: SLIDING
3681.00ft: IN TALLY: HOLE DEPTH SET TO 3678.1
3681.00ft: MUD VIS 0.52
3681.00ft: MUD WEIGHT 9.25
3681.00ft: ZWOB from SideKick sk-06-03-3103
3681.00ft: ZDiffPressure from SideKick sk-06-03-3103

3704.00ft: ZDiffPressure from SideKick sk-06-03-3103
3704.00ft: ZWOB from SideKick sk-06-03-3103
3704.07ft: ROTATING
3706.79ft: PUMP SWEEP

3723.00ft: ZERO ALL PUMPS from SideKick sk-05-05-1268

09:44 3760
09:46 3770
10:04 3780
10:09 3790
10:13 3800
10:21 3810
10:24 3820
10:27 3830
10:30 3840
10:32 3850
10:34 3860
10:57 3870
11:03 3880
11:08 3890
11:18 3900
11:20 3910
11:23 3920
11:25 3930
11:27 3940
11:29 3950
11:48 3960
11:53 3970



3772.87ft: Connection at 3769.5
3773.00ft: MUD VIS 0.52
3773.00ft: MUD WEIGHT 9.25
3773.00ft: ZWOB from SideKick sk-06-03-3103
3773.00ft: ZDiffPressure from SideKick sk-06-03-3103
3773.88ft: SLIDING
3773.88ft: ZDiffPressure from SideKick sk-06-03-3103
3774.02ft: ZWOB from SideKick sk-06-03-3103

3796.46ft: SURVEY @ 3714 INC 25.9
AZI 132.6 TVD 3142.16
3800.00ft: ZDiffPressure from SideKick sk-06-03-3103
3800.00ft: ZWOB from SideKick sk-06-03-3103
3800.00ft: ZDiffPressure from SideKick sk-06-03-3103
3800.43ft: ROTATING

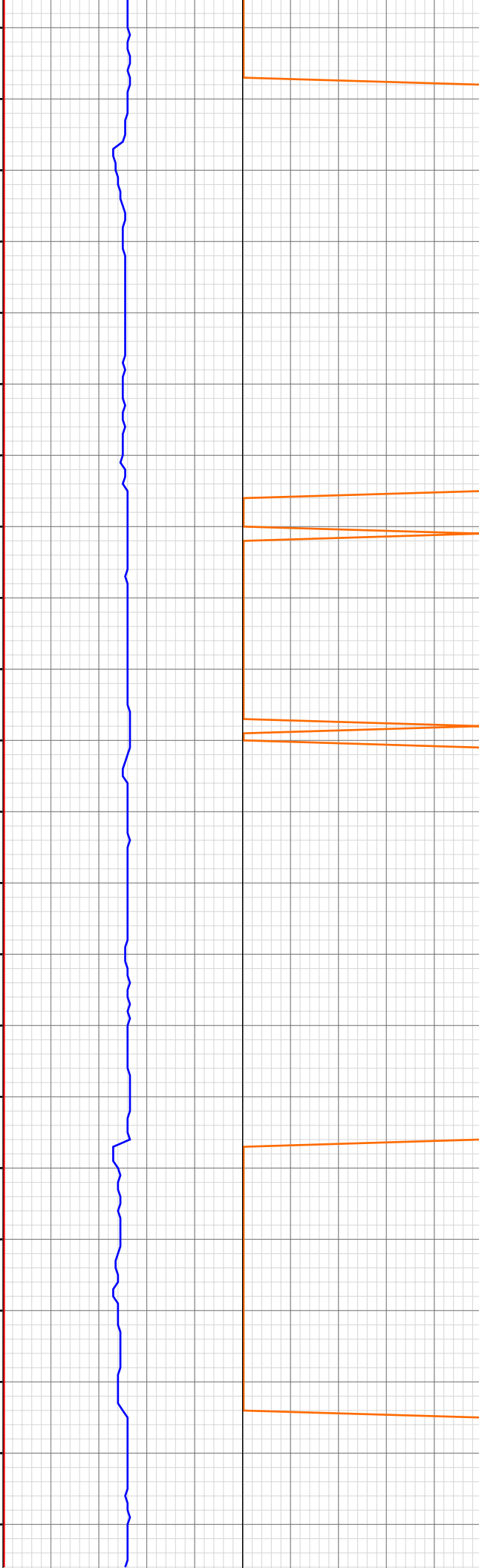
3861.15ft: Connection at 3861.2
3861.15ft: SURVEY @ 3806 INC 24.2
AZI 129.9 TVD 3225.51
3861.15ft: SLIDING
3861.15ft: ZWOB from SideKick sk-06-03-3103
3868.01ft: IN TALLY: HOLE DEPTH SET TO 3861.2
3868.01ft: ZDiffPressure from SideKick sk-06-03-3103
3868.01ft: ZDiffPressure from SideKick sk-06-03-3103
3868.01ft: ZWOB from SideKick sk-06-03-3103

3887.99ft: MUD VIS 0.53
3889.01ft: MUD WEIGHT 9.25
3893.01ft: ZDiffPressure from SideKick sk-06-03-3103
3893.01ft: ZWOB from SideKick sk-06-03-3103
3893.21ft: PUMP SWEEP
3895.01ft: ZERO ALL PUMPS from SideKick sk-05-05-1268

3924.02ft: TRANSFERRED 0.00

3952.69ft: Connection at 3952.7
3952.69ft: SURVEY @ 3897 INC 20.7
AZI 130.6 TVD 3309.6
3953.77ft: SLIDING
3954.99ft: IN TALLY: HOLE DEPTH SET TO 3952.7
3954.99ft: TRANSFERRED 30.00
3954.99ft: 008TGAS-Check dryer cable (rig air)
3954.99ft: ZDiffPressure from SideKick sk-06-03-3103
3954.99ft: ZWOB from SideKick sk-06-03-3103
3954.99ft: ZDiffPressure from SideKick sk-06-03-3103
3954.99ft: ZWOB from SideKick sk-06-03-3103

11:58 3980
12:10 3990
12:12 4000
12:15 4010
12:18 4020
12:22 4030
12:25 4040
12:45 4050
12:50 4060
12:55 4070
13:07 4080
13:10 4090
13:12 4100
13:15 4110
13:17 4120
13:20 4130
13:41 4140
13:45 4150
13:49 4160
13:53 4170
14:01 4180
14:05 4190



3983.01ft: MUD VIS 0.52
3983.01ft: MUD VIS 0.52
3983.01ft: MUD WEIGHT 9.50
3985.53ft: ROTATING
3987.01ft: ZWOB from SideKick sk-06-03-3103
3987.01ft: ZWOB from SideKick sk-06-03-3103
3987.01ft: ZDiffPressure from SideKick sk-06-03-3103
3987.01ft: ZDiffPressure from SideKick sk-06-03-3103

4018.37ft: PUMP OUT CELLAR

4044.32ft: Connection at 4044.3
4044.32ft: SLIDING
4047.01ft: IN TALLY: HOLE DEPTH SET TO 4044.3
4047.01ft: ZWOB from SideKick sk-06-03-3103
4047.01ft: ZDiffPressure from SideKick sk-06-03-3103
4047.01ft: ZWOB from SideKick sk-06-03-3103
4047.01ft: ZDiffPressure from SideKick sk-06-03-3103
4049.61ft: SURVEY @ 3989 INC 17.0 AZI 132.2 TVD 3396.65
4056.99ft: 036TGAS-Sample plugged. Flushing. Call Pason

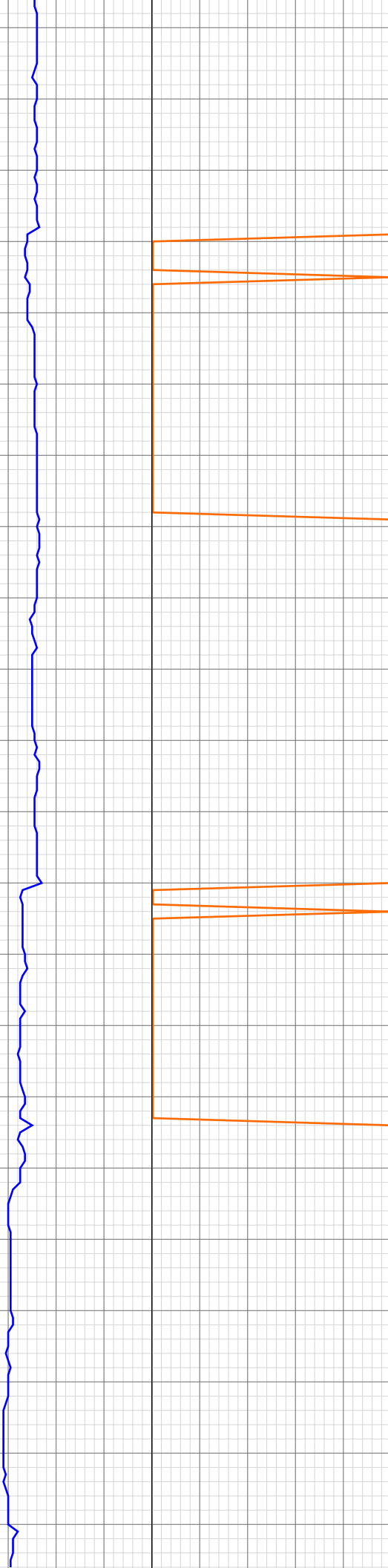
4074.02ft: MUD VIS 0.53
4074.02ft: MUD WEIGHT 9.30
4078.05ft: ROTATING
4079.99ft: ZDiffPressure from SideKick sk-06-03-3103
4079.99ft: ZWOB from SideKick sk-06-03-3103
4086.48ft: PUMP SWEEP

4092.13ft: ZERO ALL PUMPS from SideKick sk-05-05-1268

4135.93ft: IN TALLY: HOLE DEPTH SET TO 4135.9
4135.93ft: Connection at 4135.9
4135.93ft: SLIDING
4135.99ft: ZDiffPressure from SideKick sk-06-03-3103
4137.99ft: ZWOB from SideKick sk-06-03-3103
4137.99ft: ZDiffPressure from SideKick sk-06-03-3103
4137.99ft: ZWOB from SideKick sk-06-03-3103
4142.62ft: SURVEY @ 4080 INC 14.1 AZI 128.8 TVD 3484.31

4169.19ft: ROTATING
4174.02ft: ZDiffPressure from SideKick sk-06-03-3103
4174.02ft: ZWOB from SideKick sk-06-03-3103
4174.87ft: PUMP SWEEP
4177.00ft: MUD VIS 0.53
4177.00ft: MUD WEIGHT 9.30
4183.01ft: ZERO ALL PUMPS from SideKick sk-05-05-1268

14:09 4200
14:13 4210
14:16 4220
14:38 4230
14:44 4240
14:48 4250
14:53 4260
15:06 4270
15:12 4280
15:16 4290
15:19 4300
15:21 4310
16:17 4320
16:22 4330
16:26 4340
16:30 4350
16:50 4360
16:53 4370
16:57 4380
17:06 4390
17:13 4400
17:22 4410



4227.43ft: Connection at 4227.4
4227.43ft: SURVEY @ 4172 INC 10.0
AZI 122.6 TVD 3574.27
4227.99ft: ZWOB from SideKick
sk-06-03-3103
4228.74ft: SLIDING
4228.74ft: ZDiffPressure from
SideKick sk-06-03-3103
4229.99ft: IN TALLY: HOLE DEPTH
SET TO 4227.4
4229.99ft: ZWOB from SideKick
sk-06-03-3103

4245.01ft: TRANSFERRED 0.00

4256.99ft: TRANSFERRED 30.00
4266.99ft: MUD VIS 0.48
4266.99ft: MUD WEIGHT 9.40
4267.72ft: ROTATING
4268.01ft: ZDiffPressure from
SideKick sk-06-03-3103
4268.01ft: ZWOB from SideKick
sk-06-03-3103
4268.01ft: ZWOB from SideKick
sk-06-03-3103
4268.27ft: PUMP OUT CELLAR

4319.06ft: RIG SERVICE
4319.06ft: Connection at 4319.1
4324.02ft: IN TALLY: HOLE DEPTH
SET TO 4319.1
4324.02ft: MUD VIS 0.52
4324.02ft: MUD WEIGHT 9.40
4324.02ft: ZWOB from SideKick
sk-06-03-3103
4324.02ft: ZDiffPressure from
SideKick sk-06-03-3103
4324.02ft: ZWOB from SideKick
sk-06-03-3103
4324.02ft: ZDiffPressure from
SideKick sk-06-03-3103

4352.99ft: ZDiffPressure from
SideKick sk-06-03-3103
4352.99ft: ZWOB from SideKick
sk-06-03-3103
4355.15ft: PUMP SWEEP
4360.99ft: ZERO ALL PUMPS from
SideKick sk-06-03-3868

4381.00ft: ZWOB from SideKick
sk-06-03-3103
4381.00ft: ZDiffPressure from
SideKick sk-06-03-3103
4381.00ft: MUD VIS 0.53
4381.00ft: MUD WEIGHT 9.40
4381.40ft: FORMATION CHANG

4410.50ft: Connection at 4410.5
4410.50ft: SURVEY @4355 INC 2.4
AZI 143 TVD 3756.20
4410.50ft: ZWOB from SideKick
sk-06-03-3103
4411.71ft: ROTATING
4414.01ft: IN TALLY: HOLE DEPTH

17:52 4420
18:06 4430
18:19 4440
18:28 4450
18:40 4460
18:43 4470
18:47 4480
18:50 4490
18:52 4500
19:12 4510
19:14 4520
19:17 4530
19:25 4540
19:27 4550
19:29 4560
19:32 4570
19:35 4580
19:37 4590
19:50 4600
19:52 4610
19:55 4620
19:59 4630



SET TO 4410.5
4414.01ft: ZDiffPressure from
SideKick sk-06-03-3103
4414.01ft: 008TGAS-Check dryer
cable (rig air)

4446.52ft: 52/9.4

4458.01ft: ZERO ALL PUMPS from
SideKick sk-05-05-1268

4464.17ft: PICK UP DRILLING
RATES

4480.84ft: ZERO ALL PUMPS from
SideKick sk-05-05-1268

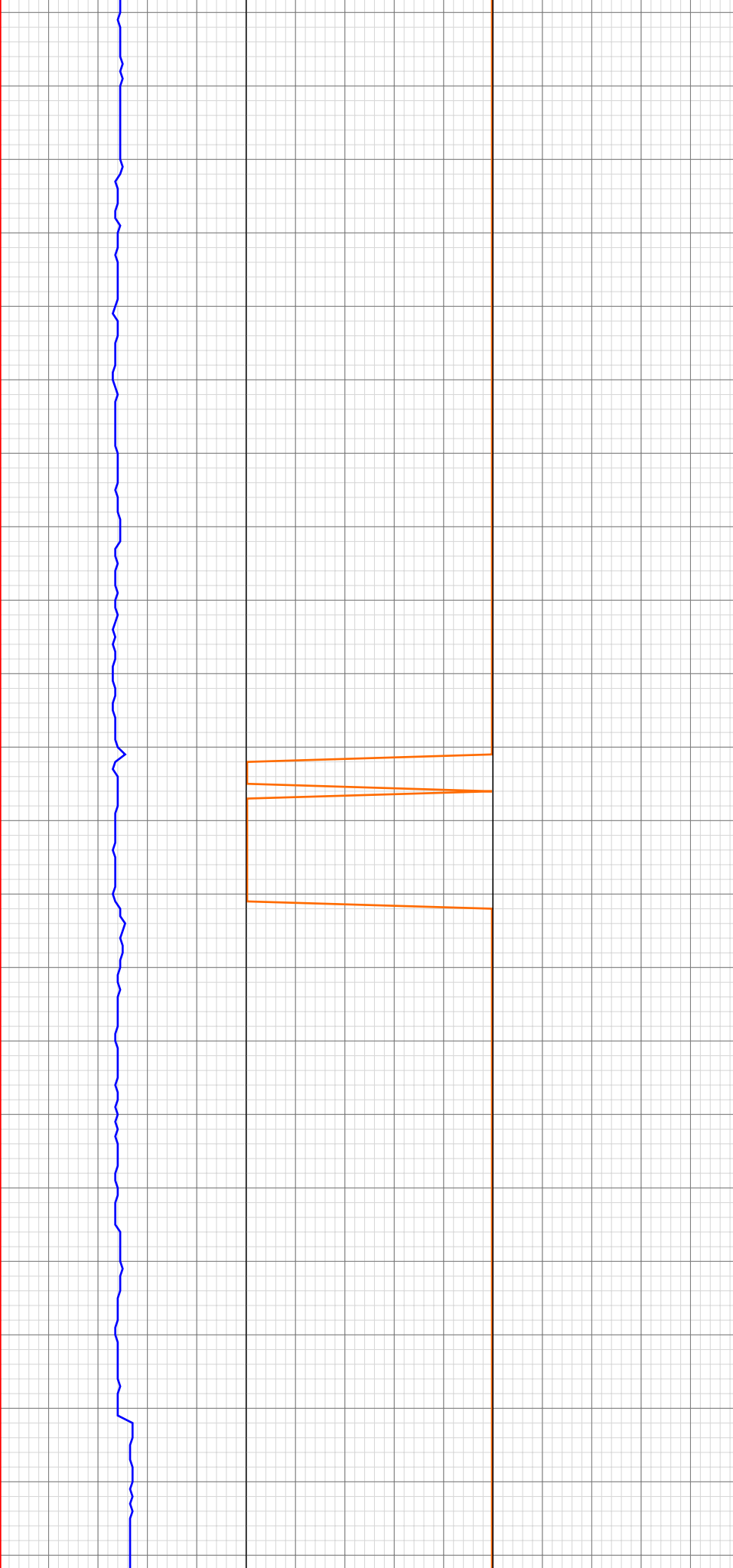
4503.28ft: SURVEY @ 4447 INC. 2.1
AZ. 254.9
4504.00ft: IN TALLY: HOLE DEPTH
SET TO 4502.2
4504.00ft: 036TGAS-Sample plugged.
Flushing. Call Pason
4504.00ft: ZDiffPressure from
SideKick sk-06-03-3103
4504.40ft: TVD 3848.13
4504.40ft: Connection at 4502.2
4504.40ft: B.O.P DRILL 1 MIN. 20
SEC.

4535.01ft: MUD VIS 54.00
4535.01ft: MUD WEIGHT 9.20

4593.80ft: Connection at 4593.8
4593.80ft: SURVEY @ 4538 INC. 2.3
AZ. 140.1 TVD 3939.06
4593.80ft: ZWOB from SideKick
sk-06-03-3103
4599.02ft: IN TALLY: HOLE DEPTH
SET TO 4593.8
4599.02ft: ZDiffPressure from
SideKick sk-06-03-3103

4633.01ft: MUD VIS 54.00
4633.01ft: MUD WEIGHT 9.25

22:01 4860
22:20 4870
22:25 4880
22:30 4890
22:32 4900
22:36 4910
22:39 4920
22:44 4930
23:02 4940
23:07 4950
23:12 4960
23:40 4970
23:54 4980
Feb 17, 2011
00:05 4990
00:10 5000
00:16 5010
00:20 5020
00:25 5030
00:30 5040
00:35 5050
04:08 5060
04:13 5070



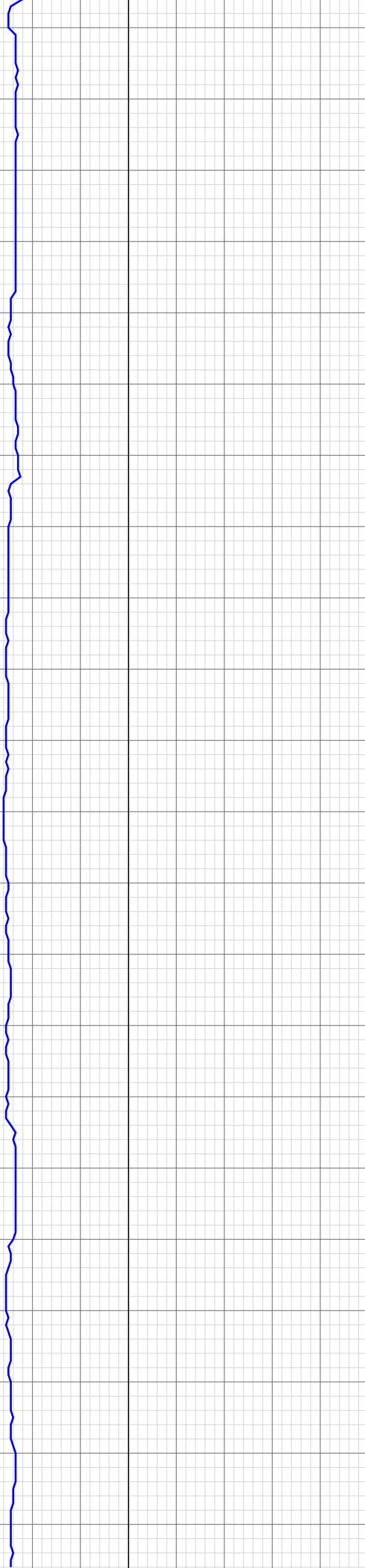
4862.53ft: 53/9.4 PVT-637
4868.01ft: IN TALLY: HOLE DEPTH SET TO 4868.2
4868.01ft: ZWOB from SideKick sk-06-03-3103
4868.21ft: SURVEY @ 4813 INC. 1.5 AZ. 156.7 TVD. 4213.88 Connection at 4868.2
4868.21ft: ZDiffPressure from SideKick sk-06-03-3103

4952.79ft: Connection at 4959.8
4959.81ft: SURVEY @ 4904 INC. 2.1 AZ. 165.9 TVD. 4304.84
4960.01ft: IN TALLY: HOLE DEPTH SET TO 4959.8
4960.01ft: MUD VIS 53.00
4960.01ft: MUD WEIGHT 0.99
4960.01ft: MUD WEIGHT 9.40
4960.01ft: ZDiffPressure from SideKick sk-06-03-3103
4972.01ft: 021TGAS 05121609 SW0.30 HW30.00 - 1 days on
4972.01ft: 008TGAS-Check dryer cable (rig air)

4981.00ft: ZERO ALL PUMPS from SideKick sk-05-05-1268

5051.25ft: SURVEY @ 4996 INC. 0.3 AZ. 94.5 TVD. 4396.82
5051.25ft: FLOW CHECK
5051.25ft: FLOW CHECK
5051.25ft: Connection at 5051.3
5051.54ft: MUD WEIGHT 9.45
5052.00ft: IN TALLY: HOLE DEPTH SET TO 5051.3
5052.00ft: MUD VIS 54.00
5052.00ft: MUD WEIGHT 9.45
5052.00ft: 002TGAS-Manual zero
5052.00ft: 003TGAS-Manual flush
5052.00ft: ZERO ALL PUMPS from SideKick sk-05-05-1268
5052.00ft: 036TGAS-Sample plugged. Flushing. Call Pason
5052.00ft: BIT DEPTH CHANGED TO 4593.0 FEET
5052.00ft: HOOK LOAD LOW RECALIBRATED
5052.00ft: HOOK LOAD THRESHOLD RECALIBRATED TO 39
5052.00ft: BIT DEPTH CHANGED TO 3495.0 FEET
5052.00ft: ZERO ALL PUMPS from SideKick sk-06-03-3103
5052.00ft: BIT DEPTH CHANGED TO 4959.0 FEET
5054.00ft: IN TALLY: HOLE DEPTH SET TO 5051.3
5054.00ft: ZDiffPressure from SideKick sk-06-03-3103
5054.00ft: ZWOB from SideKick sk-06-03-3103
5054.00ft: ZWOB from SideKick sk-06-03-3103

04:18 5080
04:22 5090
04:27 5100
04:32 5110
04:38 5120
04:45 5130
04:50 5140
05:08 5150
05:13 5160
05:16 5170
05:21 5180
05:26 5190
05:30 5200
05:34 5210
05:39 5220
05:47 5230
06:21 5240
06:26 5250
06:33 5260
06:40 5270
06:47 5280
06:55 5290



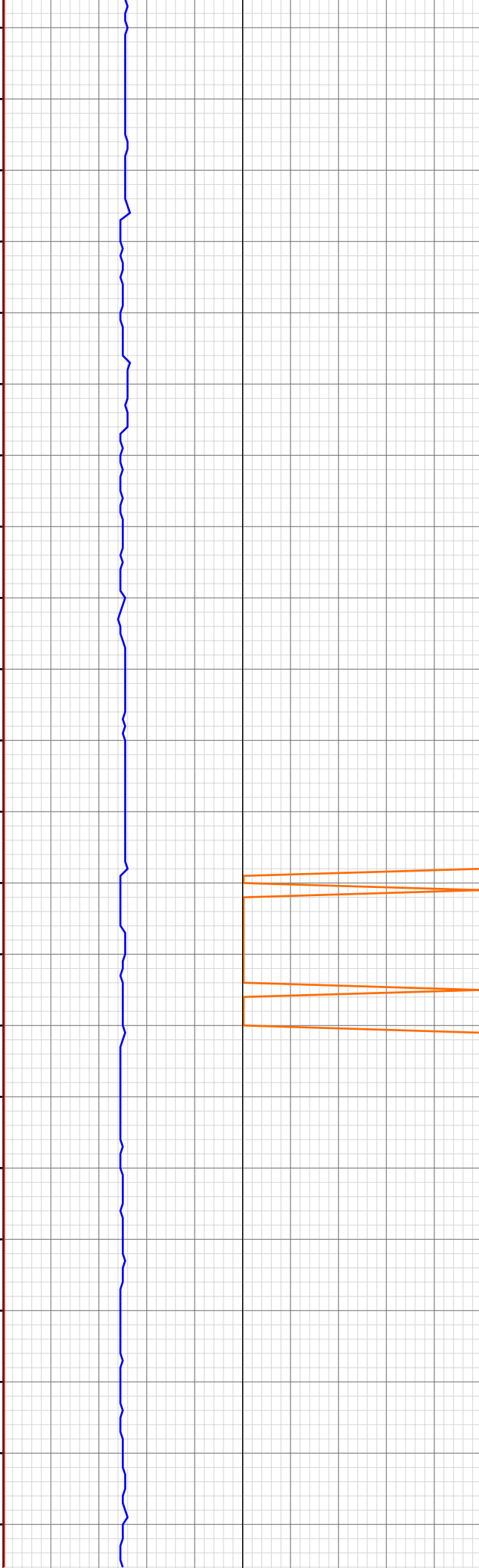
5054.00ft: MUD VIS 52.00
5064.99ft: ZERO ALL PUMPS from SideKick sk-05-05-1268

5120.01ft: 012TGAS-Analyzer air pressure low, check air supply. Standby
5121.00ft: 022TGAS-Trap needs service
5121.00ft: 046TGAS-Analyzer air pressure = zero, check air supply. Standby
5127.99ft: 042TGAS-Check dryer cable (unplugged?)
5141.99ft: IN TALLY: HOLE DEPTH SET TO 5142.7
5142.72ft: SURVEY @ 5087 INC. 0.2 AZ. 272.7 TVD. 4487.82
5142.72ft: ZDiffPressure from SideKick sk-06-03-3103
5144.00ft: MUD VIS 52.00
5144.00ft: MUD WEIGHT 9.50
5144.59ft: Connection at 5142.7
5150.85ft: 003TGAS-Manual flush

5225.98ft: 008TGAS-Check dryer cable (rig air)
5233.99ft: IN TALLY: HOLE DEPTH SET TO 5234.2
5233.99ft: MUD VIS 0.52
5233.99ft: MUD WEIGHT 9.90
5233.99ft: ZWOB from SideKick sk-06-03-3103
5233.99ft: ZDiffPressure from SideKick sk-06-03-3103
5234.25ft: Connection at 5234.2
5234.25ft: SURVEY @ 5179 INC .2 AZI 280.5 TVD 4579.81 ROTATING
5235.99ft: ZERO ALL PUMPS from SideKick sk-05-05-1268
5241.83ft: PUMP SWEEP

5293.01ft: 003TGAS-Manual flush
5293.01ft: 003TGAS-Manual flush

07:02 5300
07:09 5310
07:17 5320
07:49 5330
08:02 5340
08:10 5350
08:20 5360
08:31 5370
08:39 5380
08:46 5390
08:51 5400
08:57 5410
09:22 5420
09:33 5430
09:43 5440
09:47 5450
09:51 5460
09:55 5470
09:59 5480
10:04 5490
10:07 5500
10:28 5510



5312.34ft: B.O.P. DRILL 2MIN 10SEC
5325.00ft: MUD VIS 0.50
5325.00ft: MUD WEIGHT 9.85
5325.00ft: 036TGAS-Sample plugged.
Flushing. Call Pason
5325.00ft: ZDiffPressure from
SideKick sk-06-03-3103
5325.00ft: ZWOB from SideKick
sk-06-03-3103
5325.85ft: IN TALLY: HOLE DEPTH
SET TO 5325.8
5325.85ft: Connection at 5325.8
5325.85ft: SURVEY @ 5770 inc .7 azi
239.2 tvd 4670.81
5325.85ft: ROTATING
5330.15ft: PUMP SWEEP
5333.01ft: ZERO ALL PUMPS from
SideKick sk-05-05-1268
5333.99ft: ZWOB from SideKick
sk-06-03-3103
5333.99ft: ZDiffPressure from
SideKick sk-06-03-3103
5339.01ft: HGAS_007: LOCATION1
LEL Sensor disconnected, Press Mute
to acknowledge
5339.01ft: MUD VIS 0.54
5339.01ft: MUD WEIGHT 9.75

5391.99ft: 021TGAS 05121646
SWO.28 HW25.00 - 8 days on
5391.99ft: 008TGAS-Check dryer
cable (rig air)

5416.99ft: 036TGAS-Sample plugged.
Flushing. Call Pason
5416.99ft: ZWOB from SideKick
sk-06-03-3103
5416.99ft: ZDiffPressure from
SideKick sk-06-03-3103
5416.99ft: ZWOB from SideKick
sk-06-03-3103
5417.32ft: IN TALLY: HOLE DEPTH
SET TO 5417.3
5417.32ft: Connection at 5417.3
5417.32ft: SLIDING
5417.32ft: ZDiffPressure from
SideKick sk-06-03-3103
5418.01ft: MUD VIS 0.51
5418.01ft: MUD WEIGHT 9.80
5439.99ft: ZWOB from SideKick
sk-06-03-3103
5439.99ft: ZDiffPressure from
SideKick sk-06-03-3103
5439.99ft: ZWOB from SideKick
sk-06-03-3103
5440.09ft: ROTATING

5454.00ft: ZERO ALL PUMPS from
SideKick sk-05-05-1268

5462.99ft: 003TGAS-Manual flush

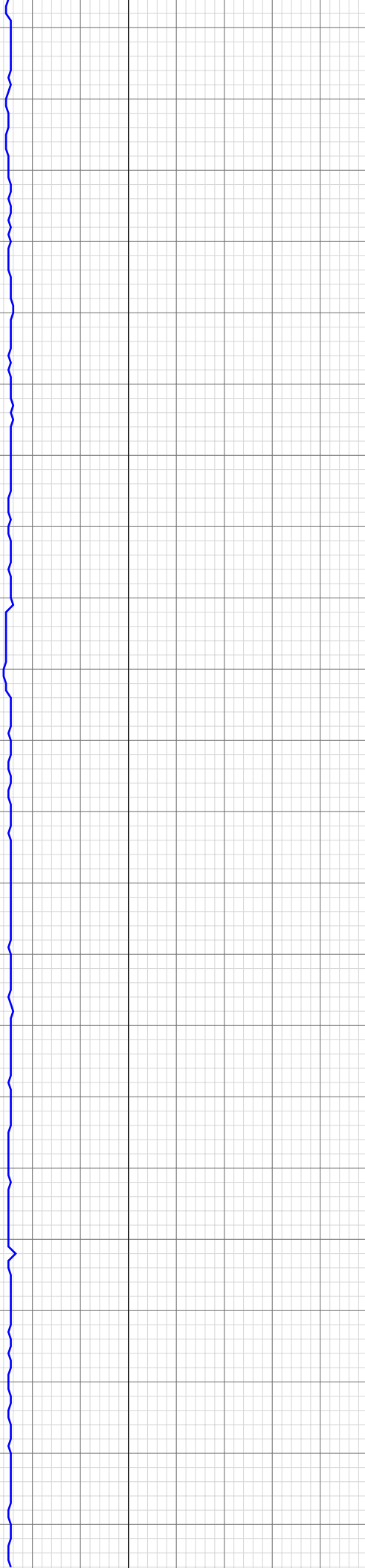
5470.01ft: 002TGAS-Manual zero

5475.00ft: MUD VIS 0.50
5475.98ft: MUD WEIGHT 9.80

5481.59ft: PUMP SWEEP
5485.01ft: ZERO ALL PUMPS from
SideKick sk-05-05-1268

5508.73ft: Connection at 5508.7
5508.73ft: SURVEY @ 5453 inc .6 azi
34.5 tvd 4853.80 ROTATING
5508.73ft: ZDiffPressure from
SideKick sk-06-03-3103
5508.99ft: ZWOB from SideKick
sk-06-03-3103
5510.99ft: IN TALLY: HOLE DEPTH
SET TO 5508.7

10:34 5520
10:40 5530
10:44 5540
10:48 5550
10:53 5560
10:56 5570
11:02 5580
11:06 5590
11:12 5600
11:39 5610
11:50 5620
11:59 5630
12:04 5640
12:09 5650
12:14 5660
12:27 5670
12:32 5680
12:38 5690
13:01 5700
13:09 5710
13:14 5720
13:19 5730



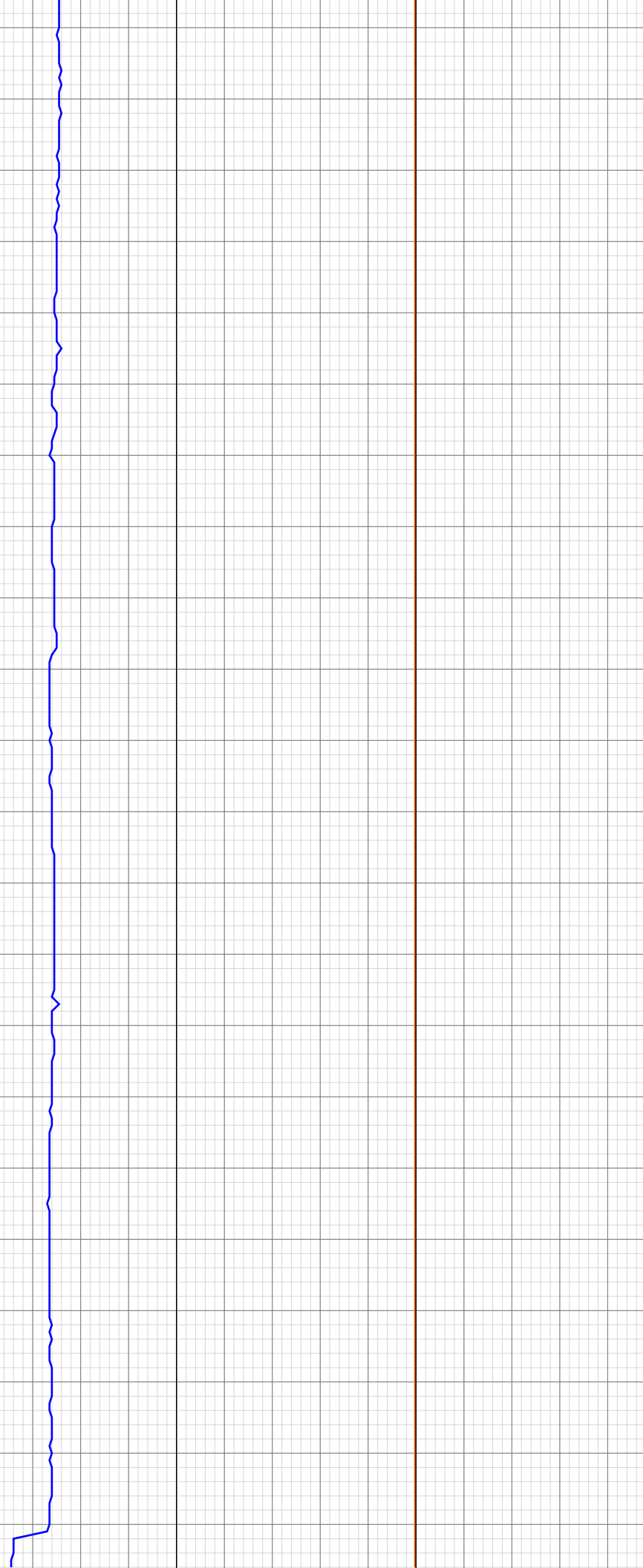
5510.99ft: ZWOB from SideKick
sk-06-03-3103
5510.99ft: ZDiffPressure from
SideKick sk-06-03-3103

5577.99ft: MUD WEIGHT 9.80
5578.02ft: MUD VIS 0.52
5579.99ft: 002TGAS-Manual zero
5580.45ft: 003TGAS-Manual flush
5596.00ft: LAG CALCULATION
PARAMETERS RESET @ DHC
5600.13ft: Connection at 5600.1
5600.13ft: SURVEY @ 5545 INC .8
AZI 28.5 TVD 4945.79 ROTATING
5600.13ft: ZWOB from SideKick
sk-06-03-3103
5600.13ft: ZWOB from SideKick
sk-06-03-3103
5602.99ft: IN TALLY: HOLE DEPTH
SET TO 5600.1
5602.99ft: ZDiffPressure from
SideKick sk-06-03-3103
5602.99ft: ZWOB from SideKick
sk-06-03-3103
5602.99ft: ZDiffPressure from
SideKick sk-06-03-3103
5602.99ft: ZDiffPressure from
SideKick sk-06-03-3103
5602.99ft: ZWOB from SideKick
sk-06-03-3103
5602.99ft: ZDiffPressure from
SideKick sk-06-03-3103
5612.99ft: ZWOB from SideKick
sk-06-03-3103
5612.99ft: ZDiffPressure from
SideKick sk-06-03-3103
5612.99ft: ZDiffPressure from
SideKick sk-06-03-3103
5612.99ft: ZWOB from SideKick
sk-06-03-3103
5612.99ft: ZWOB from SideKick
sk-06-03-3103
5633.99ft: MUD WEIGHT 9.90
5634.09ft: MUD VIS 0.51

5664.99ft: ZDiffPressure from
SideKick sk-06-03-3103
5664.99ft: ZWOB from SideKick
sk-06-03-3103
5664.99ft: ZDiffPressure from
SideKick sk-06-03-3103
5691.01ft: ZWOB from SideKick
sk-06-03-3103
5691.01ft: ZDiffPressure from
SideKick sk-06-03-3103
5691.01ft: ZWOB from SideKick
sk-06-03-3103
5691.01ft: ZDiffPressure from
SideKick sk-06-03-3103
5691.01ft: ZWOB from SideKick
sk-06-03-3103
5691.63ft: Connection at 5691.6
5691.63ft: SURVEY @ 5636 INC .8
AZI 2.6 TVD 5036.78 ROTATING
5693.01ft: IN TALLY: HOLE DEPTH
SET TO 5691.6
5696.62ft: PUMP SWEEP
5699.02ft: ZERO ALL PUMPS from
SideKick sk-05-05-1268

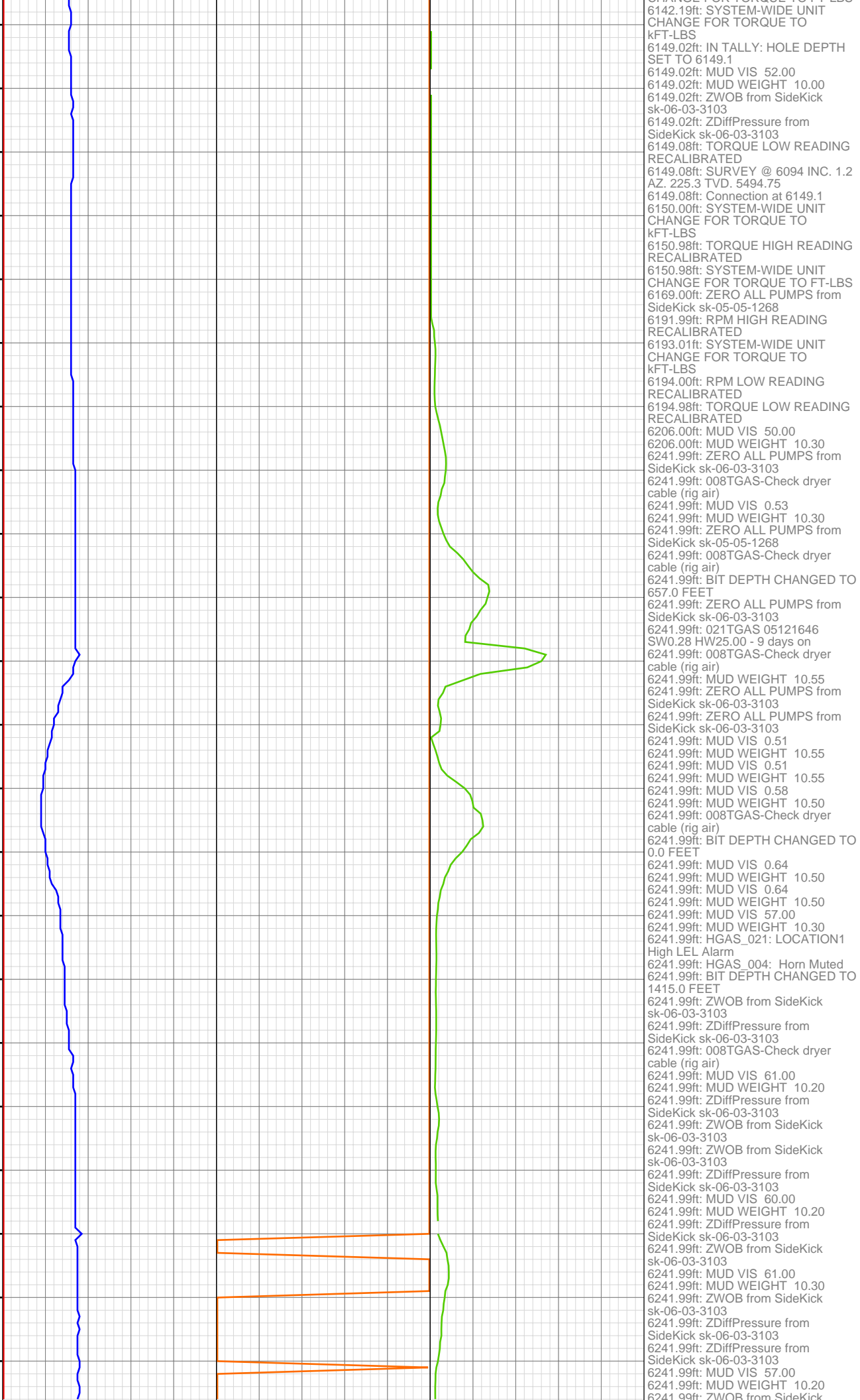
5716.99ft: MUD VIS 0.51
5717.75ft: MUD WEIGHT 9.95

13:26 5740
13:33 5750
13:39 5760
13:44 5770
13:47 5780
14:11 5790
14:16 5800
14:21 5810
14:26 5820
14:32 5830
14:37 5840
14:42 5850
14:47 5860
14:52 5870
15:36 5880
15:42 5890
15:47 5900
15:55 5910
16:00 5920
16:05 5930
16:09 5940
16:13 5950



5783.20ft: Connection at 5783.2
5783.20ft: SURVEY @ 5728 INC .2
AZI 359.6 TVD 5128.78 ROTATING
5783.99ft: IN TALLY: HOLE DEPTH
SET TO 5783.2
5783.99ft: MUD VIS 0.51
5783.99ft: MUD WEIGHT 10.10
5783.99ft: ZWOB from SideKick
sk-06-03-3103
5783.99ft: ZDiffPressure from
SideKick sk-06-03-3103
5783.99ft: ZDiffPressure from
SideKick sk-06-03-3103
5783.99ft: ZWOB from SideKick
sk-06-03-3103
5791.99ft: ZERO ALL PUMPS from
SideKick sk-05-05-1268
5801.57ft: PUMP OUT CELLAR
5858.01ft: 008TGAS-Check dryer
cable (rig air)
5875.98ft: 036TGAS-Sample plugged.
Flushing. Call Pason
5875.98ft: MUD VIS 0.51
5875.98ft: MUD WEIGHT 9.90
5875.98ft: ZWOB from SideKick
sk-06-03-3103
5875.98ft: ZDiffPressure from
SideKick sk-06-03-3103
5875.98ft: ZDiffPressure from
SideKick sk-06-03-3103
5875.98ft: ZWOB from SideKick
sk-06-03-3103
5876.12ft: SURVEY @ 5819 INC .5
AZI 213.1
5876.12ft: Connection at 5874.7
5950.49ft: PUMP SWEEP
5950.98ft: MUD VIS 0.51
5952.00ft: MUD WEIGHT 9.95
5956.99ft: 003TGAS-Manual flush
5958.01ft: 002TGAS-Manual zero
5958.01ft: 003TGAS-Manual flush
5958.01ft: ZERO ALL PUMPS from
SideKick sk-06-03-3868
5960.01ft: ZWOB from SideKick
sk-06-03-3103
5960.01ft: ZDiffPressure from
SideKick sk-06-03-3103
5966.14ft: IN TALLY: HOLE DEPTH
SET TO 5966.1
5966.14ft: Connection at 5966.1
5966.14ft: SYSTEM-WIDE UNIT
CHANGE FOR TORQUE TO
kFT-LBS
5966.14ft: SURVEY @ 5911 INC. 0.8
AZ 241.0 TVD. 5311.77
5966.99ft: SYSTEM-WIDE UNIT
CHANGE FOR TORQUE TO FT-LBS
5968.01ft: SYSTEM-WIDE UNIT
CHANGE FOR TORQUE TO AMPS
5969.46ft: SYSTEM-WIDE UNIT
CHANGE FOR TORQUE TO Nm
5970.01ft: ZWOB from SideKick
sk-06-03-3103
5970.01ft: ZDiffPressure from
SideKick sk-06-03-3103
5970.01ft: ZWOB from SideKick
sk-06-03-3103
5985.01ft: MUD VIS 0.51
5985.01ft: MUD WEIGHT 10.00
6004.00ft: 022TGAS-Trap needs
service
6005.32ft: 012TGAS-Analyzer air
pressure low, check air supply.
Standby
6006.99ft: 043TGAS-Check trap cable
(unplugged?)
6057.48ft: Connection at 6057.5
6057.48ft: SURVEY @ 6002 INC. 0.7
AZ 237.1 TVD. 5402.76
6058.01ft: IN TALLY: HOLE DEPTH
SET TO 6057.5
6058.01ft: ZWOB from SideKick
sk-06-03-3103
6058.01ft: ZDiffPressure from
SideKick sk-06-03-3103
6058.01ft: ZWOB from SideKick
sk-06-03-3103
6077.00ft: MUD VIS 50.00
6077.00ft: MUD WEIGHT 10.00
6108.99ft: ZERO ALL PUMPS from
SideKick sk-05-05-1268
6141.99ft: TORQUE LOW READING
RECALIBRATED
6141.99ft: TORQUE HIGH READING
RECALIBRATED
6141.99ft: SYSTEM-WIDE UNIT
CHANGE FOR TORQUE TO FT-LBS

16:19 5960
16:29 5970
16:55 5980
17:01 5990
17:06 6000
17:11 6010
17:16 6020
17:23 6030
17:29 6040
17:34 6050
17:57 6060
18:09 6070
18:17 6080
18:22 6090
18:27 6100
18:32 6110
18:37 6120
18:46 6130
18:54 6140
19:22 6150
19:27 6160
19:33 6170



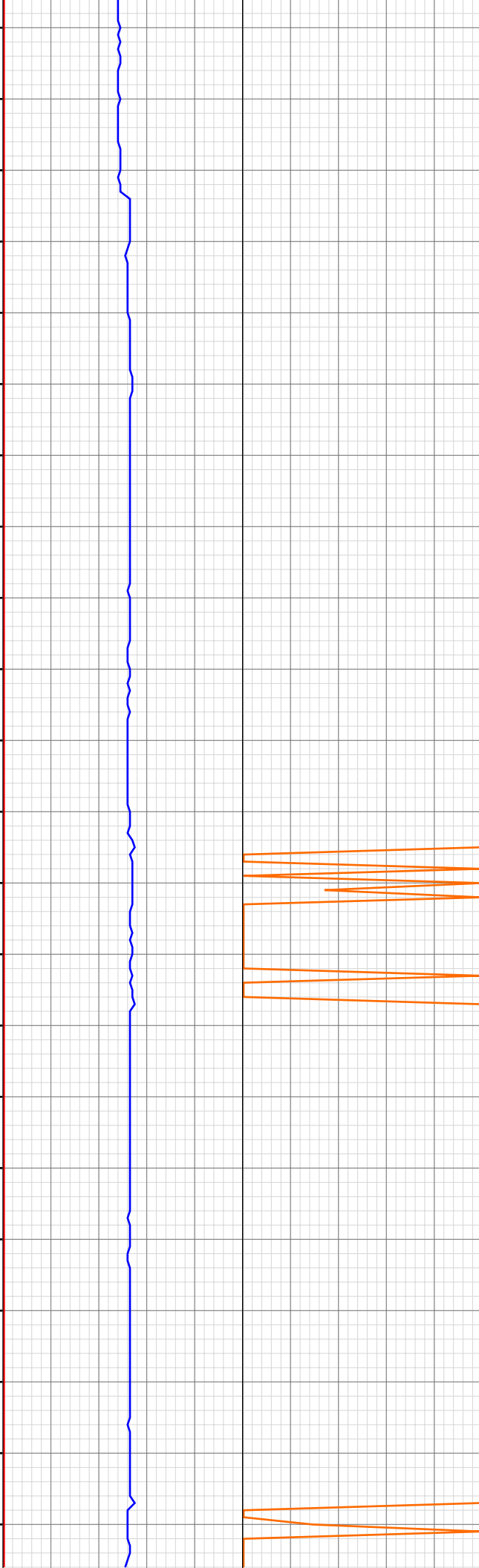
6142.19ft: SYSTEM-WIDE UNIT
CHANGE FOR TORQUE TO
kFT-LBS
6149.02ft: IN TALLY: HOLE DEPTH
SET TO 6149.1
6149.02ft: MUD VIS 52.00
6149.02ft: MUD WEIGHT 10.00
6149.02ft: ZWOB from SideKick
sk-06-03-3103
6149.02ft: ZDiffPressure from
SideKick sk-06-03-3103
6149.08ft: TORQUE LOW READING
RECALIBRATED
6149.08ft: SURVEY @ 6094 INC. 1.2
AZ. 225.3 TVD. 5494.75
6149.08ft: Connection at 6149.1
6150.00ft: SYSTEM-WIDE UNIT
CHANGE FOR TORQUE TO
kFT-LBS
6150.98ft: TORQUE HIGH READING
RECALIBRATED
6150.98ft: SYSTEM-WIDE UNIT
CHANGE FOR TORQUE TO FT-LBS
6169.00ft: ZERO ALL PUMPS from
SideKick sk-05-05-1268
6191.99ft: RPM HIGH READING
RECALIBRATED
6193.01ft: SYSTEM-WIDE UNIT
CHANGE FOR TORQUE TO
kFT-LBS
6194.00ft: RPM LOW READING
RECALIBRATED
6194.98ft: TORQUE LOW READING
RECALIBRATED
6206.00ft: MUD VIS 50.00
6206.00ft: MUD WEIGHT 10.30
6241.99ft: ZERO ALL PUMPS from
SideKick sk-06-03-3103
6241.99ft: 008TGAS-Check dryer
cable (rig air)
6241.99ft: MUD VIS 0.53
6241.99ft: MUD WEIGHT 10.30
6241.99ft: ZERO ALL PUMPS from
SideKick sk-05-05-1268
6241.99ft: 008TGAS-Check dryer
cable (rig air)
6241.99ft: BIT DEPTH CHANGED TO
657.0 FEET
6241.99ft: ZERO ALL PUMPS from
SideKick sk-06-03-3103
6241.99ft: 021TGAS 05121646
SWO.28 HW25.00 - 9 days on
6241.99ft: 008TGAS-Check dryer
cable (rig air)
6241.99ft: MUD WEIGHT 10.55
6241.99ft: ZERO ALL PUMPS from
SideKick sk-06-03-3103
6241.99ft: ZERO ALL PUMPS from
SideKick sk-06-03-3103
6241.99ft: MUD VIS 0.51
6241.99ft: MUD WEIGHT 10.55
6241.99ft: MUD VIS 0.51
6241.99ft: MUD WEIGHT 10.55
6241.99ft: MUD VIS 0.58
6241.99ft: MUD WEIGHT 10.50
6241.99ft: 008TGAS-Check dryer
cable (rig air)
6241.99ft: BIT DEPTH CHANGED TO
0.0 FEET
6241.99ft: MUD VIS 0.64
6241.99ft: MUD WEIGHT 10.50
6241.99ft: MUD VIS 0.64
6241.99ft: MUD WEIGHT 10.50
6241.99ft: MUD VIS 57.00
6241.99ft: MUD WEIGHT 10.30
6241.99ft: HGAS_021: LOCATION1
High LEL Alarm
6241.99ft: HGAS_004: Horn Muted
6241.99ft: BIT DEPTH CHANGED TO
1415.0 FEET
6241.99ft: ZWOB from SideKick
sk-06-03-3103
6241.99ft: ZDiffPressure from
SideKick sk-06-03-3103
6241.99ft: 008TGAS-Check dryer
cable (rig air)
6241.99ft: MUD VIS 61.00
6241.99ft: MUD WEIGHT 10.20
6241.99ft: ZDiffPressure from
SideKick sk-06-03-3103
6241.99ft: ZWOB from SideKick
sk-06-03-3103
6241.99ft: ZDiffPressure from
SideKick sk-06-03-3103
6241.99ft: MUD VIS 60.00
6241.99ft: MUD WEIGHT 10.20
6241.99ft: ZDiffPressure from
SideKick sk-06-03-3103
6241.99ft: ZWOB from SideKick
sk-06-03-3103
6241.99ft: ZDiffPressure from
SideKick sk-06-03-3103
6241.99ft: MUD VIS 61.00
6241.99ft: MUD WEIGHT 10.30
6241.99ft: ZWOB from SideKick
sk-06-03-3103
6241.99ft: ZDiffPressure from
SideKick sk-06-03-3103
6241.99ft: MUD VIS 57.00
6241.99ft: MUD WEIGHT 10.20
6241.99ft: ZWOB from SideKick

19:39 6180
19:45 6190
19:59 6200
20:07 6210
20:22 6220
20:30 6230
20:37 6240
04:37 6250
04:37 6260
04:42 6270
04:46 6280
04:50 6290
04:55 6300
04:59 6310
05:04 6320
05:08 6330
05:35 6340
05:40 6350
05:45 6360
05:50 6370
05:58 6380
06:21 6390



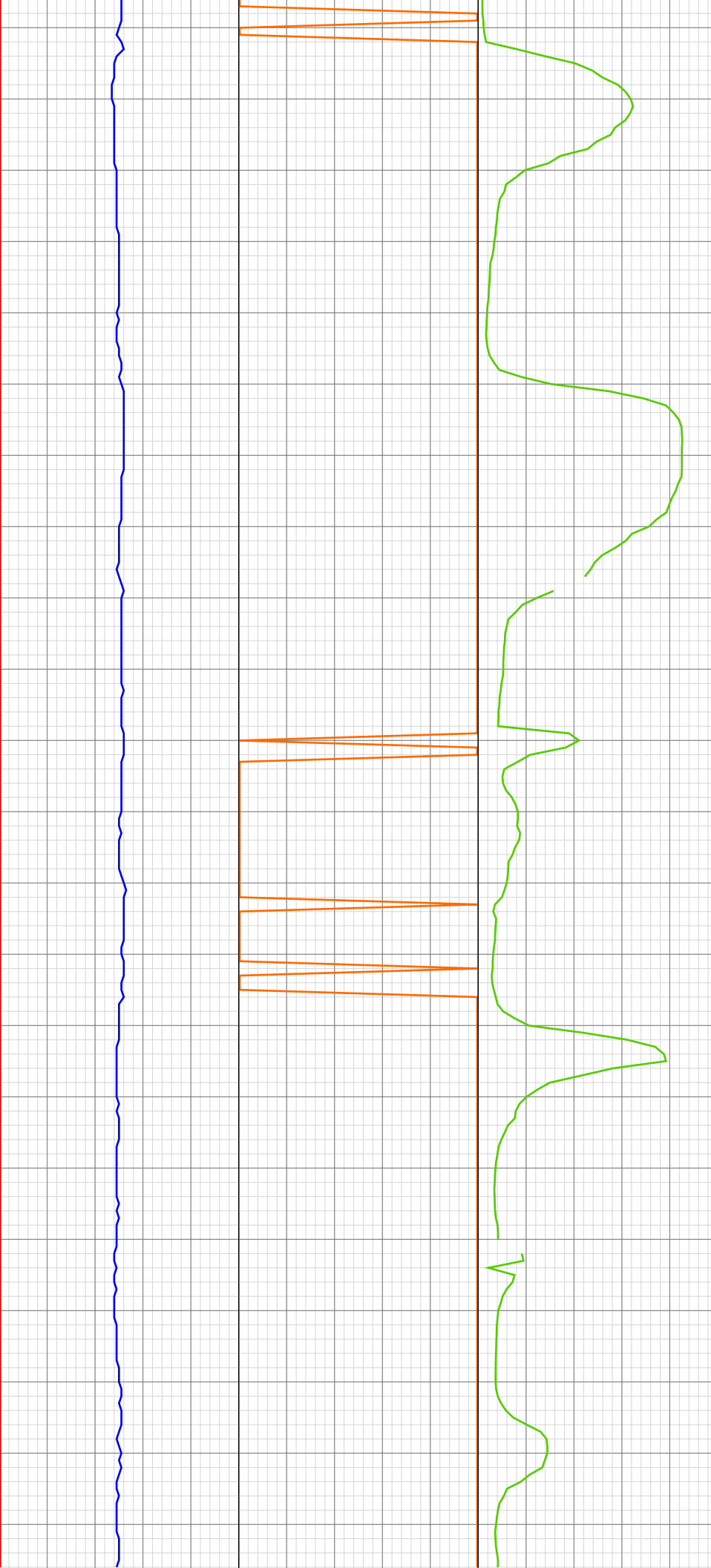
sk-06-03-3103
6241.99ft: ZDiffPressure from SideKick sk-06-03-3103
6241.99ft: MUD VIS 67.00
6241.99ft: MUD WEIGHT 10.30
6241.99ft: ZWOB from SideKick sk-06-03-3103
6241.99ft: ZDiffPressure from SideKick sk-06-03-3103
6241.99ft: ZDiffPressure from SideKick sk-06-03-3103
6241.99ft: ZWOB from SideKick sk-06-03-3103
6241.99ft: MUD VIS 0.60
6241.99ft: ZWOB from SideKick sk-06-03-3103
6241.99ft: ZDiffPressure from SideKick sk-06-03-3103
6241.99ft: ZWOB from SideKick sk-06-03-3103
6241.99ft: MUD VIS 61.00
6241.99ft: MUD WEIGHT 10.20
6241.99ft: ZERO ALL PUMPS from SideKick sk-05-05-1268
6241.99ft: MUD VIS 60.00
6241.99ft: ZWOB from SideKick sk-06-03-3103
6241.99ft: ZERO ALL PUMPS from SideKick sk-05-05-1268
6241.99ft: MUD VIS 0.64
6241.99ft: MUD WEIGHT 10.30
6241.99ft: MUD VIS 0.63
6241.99ft: MUD WEIGHT 10.35
6241.99ft: 021TGAS 05121646 SW0.28 HW25.00 - 10 days on
6241.99ft: 008TGAS-Check dryer cable (rig air)
6241.99ft: BIT DEPTH CHANGED TO 1277.0 FEET
6241.99ft: BIT DEPTH CHANGED TO 2142.0 FEET
6241.99ft: ZERO ALL PUMPS from SideKick sk-06-03-3103
6241.99ft: MUD WEIGHT 10.30
6241.99ft: ZERO ALL PUMPS from SideKick sk-06-03-3103
6241.99ft: HGAS_004: Horn Muted
6241.99ft: HGAS_023: LOCATION2 Low LEL Alarm
6241.99ft: HGAS_004: Horn Muted
6241.99ft: BIT DEPTH CHANGED TO 6078.0 FEET
6241.99ft: BIT DEPTH CHANGED TO 6017.0 FEET
6241.99ft: ZERO ALL PUMPS from SideKick sk-06-03-3103
6241.99ft: 008TGAS-Check dryer cable (rig air)
6241.99ft: MUD VIS 0.65
6241.99ft: MUD WEIGHT 10.65
6241.99ft: BIT DEPTH CHANGED TO 6108.0 FEET
6241.99ft: ZERO ALL PUMPS from SideKick sk-06-03-3103
6241.99ft: ZWOB from SideKick sk-06-03-3103
6241.99ft: ZDiffPressure from SideKick sk-06-03-3103
6241.99ft: ZDiffPressure from SideKick sk-06-03-3103
6241.99ft: ZDiffPressure from SideKick sk-06-03-3103
6241.99ft: ZWOB from SideKick sk-06-03-3103
6241.99ft: MUD VIS 0.60
6241.99ft: MUD WEIGHT 10.30
6241.99ft: MUD VIS 0.55
6241.99ft: MUD WEIGHT 10.30
6241.99ft: IN TALLY: HOLE DEPTH SET TO 6261.2
6241.99ft: MUD VIS 54.00
6241.99ft: MUD WEIGHT 10.20
6241.99ft: ZWOB from SideKick sk-06-03-3103
6241.99ft: ZDiffPressure from SideKick sk-06-03-3103
6241.99ft: ZERO ALL PUMPS from SideKick sk-06-03-3103
6241.99ft: ZERO ALL PUMPS from SideKick sk-05-05-1268
6241.99ft: 008TGAS-Check dryer cable (rig air)
6241.99ft: MUD VIS 56.00
6241.99ft: MUD WEIGHT 10.30
6241.99ft: BIT DEPTH CHANGED TO 563.0 FEET
6241.99ft: BIT DEPTH CHANGED TO 1389.0 FEET
6241.99ft: ZERO ALL PUMPS from SideKick sk-06-03-3103
6241.99ft: MUD VIS 56.00
6241.99ft: 008TGAS-Check dryer cable (rig air)
6241.99ft: ZERO ALL PUMPS from SideKick sk-06-03-3103
6241.99ft: BIT DEPTH CHANGED TO

06:47 6400
06:54 6410
07:00 6420
07:38 6430
07:43 6440
07:48 6450
07:53 6460
07:57 6470
08:02 6480
08:07 6490
08:13 6500
08:19 6510
08:49 6520
09:03 6530
09:30 6540
09:35 6550
09:39 6560
09:44 6570
09:50 6580
09:55 6590
10:01 6600
10:31 6610



5874.0 FEET
6241.99ft: BIT DEPTH CHANGED TO 6240.0 FEET
6241.99ft: ZERO ALL PUMPS from SideKick sk-06-03-3103
6241.99ft: ZDiffPressure from SideKick sk-06-03-3103
6241.99ft: ZWOB from SideKick sk-06-03-3103
6242.06ft: SURVEY @ 6185 INC. 1.2 AZ. 209.7 TVD. 5585.73
6242.06ft: MIX LCM
6242.06ft: BLOW DOWN TOP DRIVE
6242.06ft: FLOW CHECK
6242.06ft: PUMP OUT CELLAR
6242.06ft: FLOW CHECK
6242.06ft: PUMP OUT CELLAR
6242.06ft: FLOW CHECK
6242.06ft: TRANSFERED 70 BBL
6242.06ft: REAM STAND 10
6242.06ft: ZERO ALL PUMPS from SideKick sk-06-03-3103
6242.06ft: REAM @1526
6242.06ft: ZERO ALL PUMPS from SideKick sk-06-03-3103
6242.06ft: MUD VIS 0.51
6242.06ft: T.O.O.H. 100% TIE OFF BB,AB,BW
6242.06ft: PUMP OUT CELLAR
6242.06ft: PUMP OUT CELLAR
6242.06ft: 100% TIE OFF BB, TB, BW
6242.06ft: PUMP OUT CELLAR
6242.06ft: TEST LEL TEST LEL
6242.06ft: TAGE @ 1462
6242.06ft: ZWOB from SideKick sk-06-03-3103
6242.06ft: MUD WEIGHT 10.30
6242.06ft: FILL PILL TANK
6242.06ft: PUMP OUT CELLAR
6242.06ft: ZWOB from SideKick sk-06-03-3103
6242.06ft: MUD WEIGHT 10.20
6242.06ft: 100% TIE OFF BB, TB, MD, BW
6242.06ft: FIN. C.O.M. BB
6242.06ft: ROTATING RUBBER
6242.06ft: T.I.H.
6242.06ft: 100% TIE OFF BB, TB, BW
6242.06ft: ROTATING RUBBER
6242.06ft: REAM 2371'
6242.06ft: MUD VIS 0.58
6242.06ft: REAM 2544'
6242.06ft: PUMP OUT CELLAR
6242.06ft: REAM 2966
6242.06ft: HGAS_021: LOCATION1 High LEL Alarm
6242.06ft: Connection at 6169.8
6242.06ft: FLOW CHECK
6242.06ft: NO FLOW
6261.68ft: FLOW CHECK
6261.68ft: FLOW CHECK
6261.68ft: BIT DEPTH CHANGED TO 2579.0 FEET
6261.68ft: STN.22 WASHED
6261.68ft: MUD WEIGHT 10.20
6261.68ft: FILL PIPE
6271.00ft: ZERO ALL PUMPS from SideKick sk-05-05-1268
6295.01ft: MUD VIS 60.00
6295.01ft: MUD WEIGHT 10.50
6332.09ft: SURVEY @ 6277 INC. 1.3 AZ. 220.0
6332.09ft: Connection at 6332.1
6332.09ft: ZWOB from SideKick sk-06-03-3103
6333.01ft: IN TALLY: HOLE DEPTH SET TO 6332.1
6333.01ft: ZDiffPressure from SideKick sk-06-03-3103
6389.01ft: ZWOB from SideKick sk-06-03-3103
6389.01ft: ZDiffPressure from SideKick sk-06-03-3103
6389.21ft: PUMP OUT CELLAR
6391.01ft: ZWOB from SideKick sk-06-03-3103
6391.01ft: ZDiffPressure from SideKick sk-06-03-3103
6391.01ft: MUD VIS 0.60
6391.99ft: MUD WEIGHT 10.60
6393.01ft: ZWOB from SideKick sk-06-03-3103
6393.01ft: ZDiffPressure from SideKick sk-06-03-3103
6423.00ft: IN TALLY: HOLE DEPTH SET TO 6423.5
6423.00ft: ZWOB from SideKick sk-06-03-3103
6423.00ft: ZDiffPressure from SideKick sk-06-03-3103
6423.46ft: Connection at 6423.5
6423.46ft: SURVEY @ 6368 inc 1.8 azi 235.7 tvd 5768.68 ROTATING
6424.02ft: MUD VIS 0.52
6424.02ft: MUD WEIGHT 10.50
6514.01ft: ZWOB from SideKick sk-06-03-3103
6514.01ft: ZDiffPressure from SideKick sk-06-03-3103
6514.86ft: Connection at 6514.9
6514.86ft: SURVEY @ 6459 INC 2.1 AZI 236.6 SLIDING
6514.86ft: ZWOB from SideKick

10:46 6620
11:19 6630
11:26 6640
11:31 6650
11:36 6660
11:41 6670
11:47 6680
11:52 6690
12:18 6700
12:24 6710
12:33 6720
12:46 6730
13:02 6740
13:21 6750
13:39 6760
13:47 6770
13:55 6780
14:07 6790
14:34 6800
14:39 6810
14:45 6820
14:52 6830

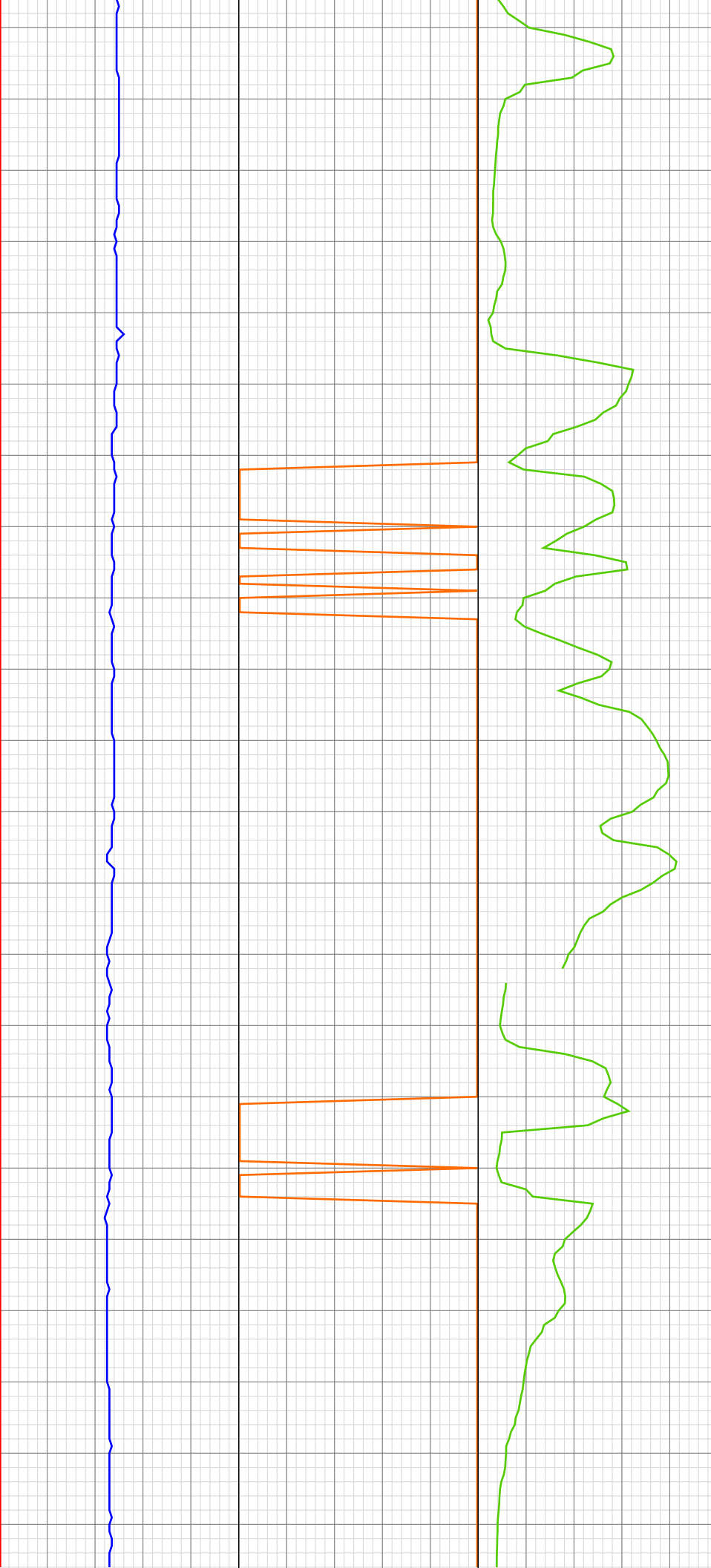


sk-06-03-3103
6516.01ft: MUD VIS 0.51
6516.01ft: MUD WEIGHT 10.50
6516.01ft: IN TALLY: HOLE DEPTH SET TO 6514.9
6525.98ft: 021TGAS 05121646 SW0.28 HW25.00 - 11 days on
6525.98ft: 008TGAS-Check dryer cable (rig air)
6535.01ft: MUD WEIGHT 10.60
6535.47ft: MUD VIS 0.50
6535.99ft: ZWOB from SideKick sk-06-03-3103
6535.99ft: ZDiffPressure from SideKick sk-06-03-3103
6535.99ft: ZERO ALL PUMPS from SideKick sk-05-05-1268
6535.99ft: ZWOB from SideKick sk-06-03-3103
6540.16ft: PUMP SWEEP
6599.02ft: MUD VIS 0.51
6600.00ft: MUD WEIGHT 10.50
6606.37ft: Connection at 6606.4 C.O.M. OK
6606.37ft: SLIDING
6606.37ft: SURVEY @ 6551 INC 1.4 AZI 241.3
6608.99ft: IN TALLY: HOLE DEPTH SET TO 6606.4
6608.99ft: ZDiffPressure from SideKick sk-06-03-3103
6608.99ft: ZWOB from SideKick sk-06-03-3103
6608.99ft: ZWOB from SideKick sk-06-03-3103
6608.99ft: ZDiffPressure from SideKick sk-06-03-3103
6621.85ft: ROTATING
6622.01ft: MUD VIS 0.54
6622.01ft: MUD WEIGHT 10.50
6622.01ft: ZWOB from SideKick sk-06-03-3103
6622.01ft: ZDiffPressure from SideKick sk-06-03-3103
6629.72ft: PUMP SWEEP
6633.99ft: ZERO ALL PUMPS from SideKick sk-05-05-1268
6698.00ft: MUD VIS 0.50
6698.00ft: MUD WEIGHT 10.50
6698.00ft: ZWOB from SideKick sk-06-03-3103
6698.06ft: Connection at 6698.1
6698.06ft: SURVEY @ 6643 inc 1.8 azi 224.9 tvd 6043.54
6698.06ft: ZDiffPressure from SideKick sk-06-03-3103
6700.00ft: IN TALLY: HOLE DEPTH SET TO 6698.1
6718.01ft: ZDiffPressure from SideKick sk-06-03-3103
6718.01ft: ZWOB from SideKick sk-06-03-3103
6718.90ft: SLIDING
6737.01ft: MUD WEIGHT 10.40
6737.34ft: MUD VIS 0.48
6741.99ft: ZWOB from SideKick sk-06-03-3103

6754.99ft: ZDiffPressure from SideKick sk-06-03-3103
6754.99ft: ZDiffPressure from SideKick sk-06-03-3103
6754.99ft: ZWOB from SideKick sk-06-03-3103

6783.99ft: MUD WEIGHT 10.50
6784.35ft: MUD VIS 0.50
6789.01ft: IN TALLY: HOLE DEPTH SET TO 6789.7
6789.01ft: ZDiffPressure from SideKick sk-06-03-3103
6789.01ft: ZWOB from SideKick sk-06-03-3103
6789.67ft: Connection at 6789.7
6789.67ft: SURVEY @ 6734 INC 1.5 AZI 230.9 TVD 6134.51 ROTATING

14:57 6840
15:03 6850
15:09 6860
15:17 6870
15:25 6880
15:49 6890
15:57 6900
16:15 6910
16:45 6920
17:05 6930
17:11 6940
17:15 6950
17:23 6960
17:29 6970
18:07 6980
18:15 6990
18:33 7000
18:57 7010
19:03 7020
19:08 7030
19:15 7040
19:20 7050



6841.01ft: 008TGAS-Check dryer cable (rig air)
6843.01ft: MUD VIS 0.48
6844.00ft: MUD WEIGHT 10.60

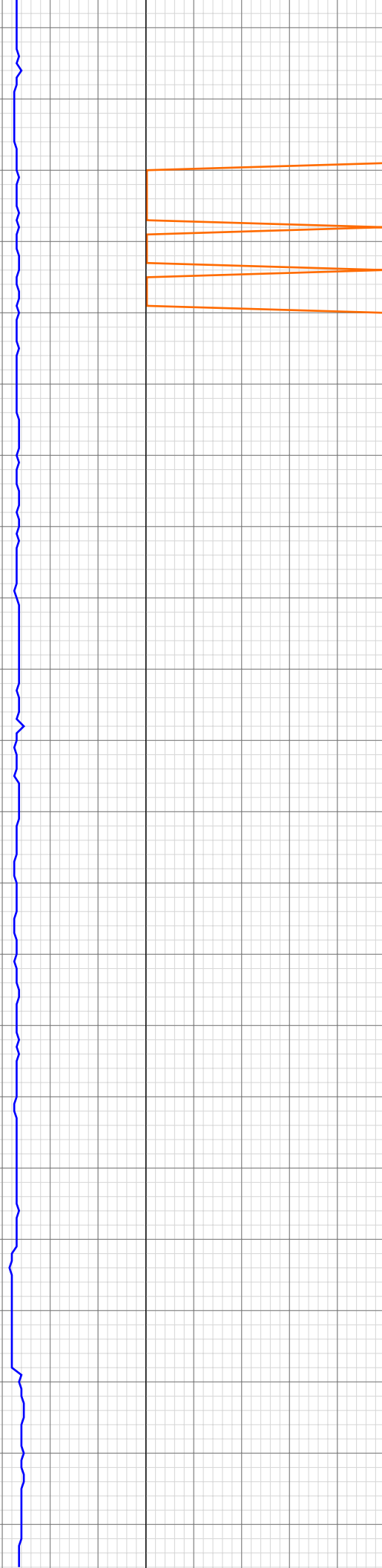
6881.43ft: Connection at 6881.4
6881.43ft: SURVEY @ 6826 INC 1.5 AZI 238.6 TVD 6226.48
6881.99ft: IN TALLY: HOLE DEPTH SET TO 6881.4
6881.99ft: ZDiffPressure from SideKick sk-06-03-3103
6881.99ft: ZWOB from SideKick sk-06-03-3103
6887.93ft: PUMP SWEEP
6898.00ft: ZERO ALL PUMPS from SideKick sk-05-05-1268
6900.00ft: ZDiffPressure from SideKick sk-06-03-3103
6900.00ft: ZWOB from SideKick sk-06-03-3103
6900.00ft: ZDiffPressure from SideKick sk-06-03-3103
6900.59ft: SLIDING
6900.59ft: SLIDING
6912.99ft: MUD WEIGHT 10.60
6913.45ft: MUD VIS 0.50
6914.01ft: ZDiffPressure from SideKick sk-06-03-3103
6923.00ft: ZWOB from SideKick sk-06-03-3103
6923.00ft: ZDiffPressure from SideKick sk-06-03-3103
6923.00ft: MUD VIS 0.50
6923.00ft: MUD WEIGHT 10.50
6923.75ft: ROTATING

6973.00ft: IN TALLY: HOLE DEPTH SET TO 6973.1
6973.00ft: ZWOB from SideKick sk-06-03-3103
6973.00ft: ZDiffPressure from SideKick sk-06-03-3103
6973.06ft: Connection at 6973.1
6973.06ft: SURVEY @ 6918 INC. 1.3 AZ. 247.4 TVD. 6318.45

6989.01ft: MUD VIS 50.00
6989.01ft: MUD WEIGHT 10.40
6992.45ft: SLIDING
6994.00ft: ZDIFF from DHC
7002.99ft: ROTATING
7004.00ft: ZWOB from SideKick sk-06-03-3103
7004.00ft: ZDiffPressure from SideKick sk-06-03-3103
7004.17ft: ZERO ALL PUMPS from SideKick sk-05-05-1268
7004.17ft: PUMP SWEEP
7004.17ft: FILL PILL TANK

7048.00ft: MUD WEIGHT 10.40
7048.59ft: MUD VIS 48.00

19:23 7060
19:41 7070
19:50 7080
20:18 7090
20:42 7100
20:46 7110
20:54 7120
20:59 7130
21:04 7140
21:10 7150
21:31 7160
21:40 7170
21:56 7180
22:08 7190
22:16 7200
22:24 7210
22:34 7220
22:43 7230
23:05 7240
23:27 7250
23:33 7260
23:41 7270



7064.70ft: SURVEY @ 7009 INC. 1.3
AZ. 270.1 TVD. 6409.42
7064.70ft: Connection at 7064.7
7064.99ft: IN TALLY: HOLE DEPTH
SET TO 7064.7
7064.99ft: ZWOB from SideKick
sk-06-03-3103
7064.99ft: ZDiffPressure from
SideKick sk-06-03-3103
7079.69ft: SLIDING
7087.01ft: MUD VIS 48.00
7087.01ft: MUD WEIGHT 10.40
7104.99ft: ZERO ALL PUMPS from
SideKick sk-05-05-1268
7112.43ft: PUMP SWEEP
7125.98ft: 008TGAS-Check dryer
cable (rig air)
7141.01ft: MUD VIS 50.00
7141.01ft: MUD WEIGHT 10.40
7156.43ft: Connection at 7156.4
7156.43ft: SURVEY @ 7101 INC. 1.4
AZ. 295.1 TVD. 6501.4
7156.99ft: IN TALLY: HOLE DEPTH
SET TO 7156.4
7156.99ft: ZDiffPressure from
SideKick sk-06-03-3103
7175.00ft: ZERO ALL PUMPS from
SideKick sk-05-05-1268
7175.00ft: ZDiffPressure from
SideKick sk-06-03-3103
7181.33ft: FILL PILL TANK
7191.01ft: TRANSFERRED 50.00
7219.69ft: SLOW FOR FORMATION
7231.00ft: ZWOB from SideKick
sk-06-03-3103
7231.00ft: ZDiffPressure from
SideKick sk-06-03-3103
7231.00ft: MUD VIS 47.00
7231.00ft: MUD WEIGHT 10.40
7235.99ft: MUD VIS 54.00
7237.01ft: MUD WEIGHT 10.40
7248.00ft: IN TALLY: HOLE DEPTH
SET TO 7248.0
7248.00ft: Connection at 7248.0
7248.00ft: SURVEY @ 7192 INC. 2.1
AZ. 285.7 TVD. 6592.36
7248.00ft: ZDiffPressure from
SideKick sk-06-03-3103
7248.00ft: ZWOB from SideKick
sk-06-03-3103

23:52 7280
Feb 21, 2011
00:10 7300
00:15 7310
00:19 7320
00:23 7330
00:51 7340
00:57 7350
01:04 7360
01:11 7370
01:19 7380
01:27 7390
01:33 7400
01:39 7410
01:50 7420
01:56 7430
02:20 7440
02:25 7450
02:29 7460
02:33 7470
02:42 7480
02:49 7490

7277.00ft: ZERO ALL PUMPS from SideKick sk-05-05-1268
7280.25ft: PUMP SWEEP

7289.01ft: MUD VIS 54.00
7289.01ft: MUD WEIGHT 10.40

7295.01ft: MUD VIS 56.00
7295.01ft: MUD WEIGHT 10.30

7339.01ft: ZWOB from SideKick sk-06-03-3103
7339.01ft: ZDiffPressure from SideKick sk-06-03-3103
7339.50ft: IN TALLY: HOLE DEPTH SET TO 7339.5
7339.50ft: Connection at 7339.5
7339.50ft: SURVEY @ 7284 INC. 1.9 AZ. 307.9 TVD. 6684.30

7356.00ft: MUD VIS 60.00
7356.00ft: MUD WEIGHT 10.40

7366.01ft: MUD WEIGHT 10.40
7366.80ft: MUD VIS 0.57
7424.02ft: ZERO ALL PUMPS from SideKick sk-05-05-1268
7431.14ft: IN TALLY: HOLE DEPTH SET TO 7431.1
7431.14ft: Connection at 7431.1
7431.14ft: SURVEY @ 7376 INC. 1.5 AZ. 311.8 TVD. 6776.26
7431.99ft: MUD VIS 61.00
7431.99ft: MUD WEIGHT 10.50
7431.99ft: ZDiffPressure from SideKick sk-06-03-3103
7502.00ft: 008TGAS-Check dryer cable (rig air)
7506.99ft: MUD VIS 57.00
7506.99ft: MUD WEIGHT 10.50
7522.01ft: IN TALLY: HOLE DEPTH SET TO 7522.8
7522.01ft: ZWOB from SideKick sk-06-03-3103
7522.01ft: ZDiffPressure from SideKick sk-06-03-3103
7522.77ft: SPR
7522.77ft: SURVEY @ 7467 INC. 1.6 AZ. 308.8 TVD. 6867.23
7522.77ft: Connection at 7522.8
7537.01ft: ZERO ALL PUMPS from SideKick sk-05-05-1268
7541.96ft: PUMP SWEEP
7542.95ft: FILL PILL TANK
7614.50ft: SURVEY @ 7559 INC. 1.7 AZ. 303.8 TVD. 6959.19
7614.50ft: ZDiffPressure from SideKick sk-06-03-3103
7614.50ft: Connection at 7614.5
7616.99ft: MUD VIS 54.00
7616.99ft: MUD WEIGHT 10.50
7616.99ft: IN TALLY: HOLE DEPTH SET TO 7614.5
7616.99ft: ZDiffPressure from SideKick sk-06-03-3103
7623.00ft: MUD VIS 62.00
7623.00ft: MUD WEIGHT 10.60
7685.01ft: ZDiffPressure from SideKick sk-06-03-3103
7685.24ft: SLOW FOR FORMATION
7685.24ft: ZDiffPressure from SideKick sk-06-03-3103
7685.99ft: MUD VIS 0.56
7685.99ft: MUD WEIGHT 10.60
7695.18ft: PUMP OUT CELLAR
7700.79ft: TEST LEL
7702.00ft: HGAS_004: Horn Muted
7702.46ft: HGAS_020: LOCATION1 Low LEL Alarm
7702.99ft: HGAS_023: LOCATION2 Low LEL Alarm
7702.99ft: HGAS_004: Horn Muted
7704.76ft: LEL OPERATIONAL
7706.14ft: Connection at 7706.1
7706.14ft: SURVEY @ 7651 INC. 1.8 AZ. 312.9 TVD. 7051.15
7706.14ft: TEST C.O.M. OK
7706.99ft: IN TALLY: HOLE DEPTH SET TO 7706.1
7706.99ft: MUD VIS 0.51
7706.99ft: MUD WEIGHT 10.60

02:55 7500
03:05 7510
03:12 7520
03:43 7530
03:50 7540
03:59 7550
04:08 7560
04:13 7570
04:19 7580
04:23 7590
04:26 7600
04:30 7610
04:58 7620
05:25 7630
05:34 7640
05:43 7650
05:48 7660
05:50 7670
05:59 7680
06:25 7690
06:56 7700
07:55 7710



7707.74ft: ZDiffPressure from SideKick sk-06-03-3103
7710.01ft: BIT DEPTH CHANGED TO 7726.0 FEET
7710.99ft: MUD WEIGHT 10.60
7711.81ft: MUD VIS 0.52
7725.98ft: HOLE DEPTH CHANGED TO 7709.0 FEET
7737.01ft: 021TGAS 05121646 SW0.28 HW25.00 - 12 days on
7737.01ft: 008TGAS-Check dryer cable (rig air)
7737.01ft: ZWOB from SideKick sk-06-03-3103
7737.01ft: ZDiffPressure from SideKick sk-06-03-3103
7737.50ft: RIG SERVICE
7747.01ft: MUD VIS 0.50
7748.00ft: MUD WEIGHT 10.60
7763.45ft: PUMP SWEEP
7764.01ft: ZERO ALL PUMPS from SideKick sk-05-05-1268
7795.01ft: MUD WEIGHT 10.60
7795.57ft: MUD VIS 0.50
7797.01ft: IN TALLY: HOLE DEPTH SET TO 7797.8
7797.01ft: ZWOB from SideKick sk-06-03-3103
7797.01ft: ZDiffPressure from SideKick sk-06-03-3103
7797.77ft: Connection at 7797.8
7829.99ft: ZERO ALL PUMPS from SideKick sk-05-05-1268
7829.99ft: MUD VIS 0.50
7829.99ft: MUD WEIGHT 10.60
7829.99ft: ZERO ALL PUMPS from SideKick sk-06-03-3103
7829.99ft: 008TGAS-Check dryer cable (rig air)
7829.99ft: BIT DEPTH CHANGED TO 2213.6 FEET
7829.99ft: BIT DEPTH CHANGED TO 4593.0 FEET
7829.99ft: MUD VIS 0.52
7829.99ft: MUD WEIGHT 10.65
7829.99ft: BIT DEPTH CHANGED TO 5874.7 FEET
7829.99ft: BIT DEPTH CHANGED TO 7797.0 FEET
7829.99ft: ZERO ALL PUMPS from SideKick sk-06-03-3103
7829.99ft: ZERO ALL PUMPS from SideKick sk-06-03-3103
7829.99ft: MUD VIS 53.00
7829.99ft: MUD WEIGHT 10.40
7829.99ft: ZERO ALL PUMPS from SideKick sk-05-05-1268
7829.99ft: MUD VIS 95.00
7829.99ft: MUD WEIGHT 10.50
7829.99ft: ZERO ALL PUMPS from SideKick sk-05-05-1268
7829.99ft: MUD VIS 54.00
7829.99ft: MUD WEIGHT 10.50
7829.99ft: MUD VIS 10.00
7829.99ft: MUD WEIGHT 10.50
7829.99ft: MUD VIS 55.00
7829.99ft: HGAS_005: System Test Performed: No Faults Detected
7829.99ft: HGAS_005: System Test Performed: No Faults Detected
7829.99ft: 008TGAS-Check dryer cable (rig air)
7829.99ft: MUD VIS 53.00
7829.99ft: MUD WEIGHT 10.50
7829.99ft: MUD VIS 54.00
7829.99ft: MUD WEIGHT 10.40
7829.99ft: ZERO ALL PUMPS from SideKick sk-05-05-1268
7829.99ft: BIT DEPTH CHANGED TO 0.0 FEET
7829.99ft: MUD VIS 52.00
7829.99ft: MUD WEIGHT 10.50
7829.99ft: 008TGAS-Check dryer cable (rig air)
7829.99ft: BIT DEPTH CHANGED TO 614.0 FEET
7829.99ft: ZERO ALL PUMPS from SideKick sk-06-03-3103
7829.99ft: BIT DEPTH CHANGED TO 1603.0 FEET
7829.99ft: MUD VIS 0.53
7829.99ft: MUD WEIGHT 10.50
7829.99ft: ZERO ALL PUMPS from SideKick sk-06-03-3103
7829.99ft: ZERO ALL PUMPS from SideKick sk-06-03-3103
7829.99ft: BIT DEPTH CHANGED TO 3154.3 FEET
7829.99ft: 021TGAS 05121646 SW0.28 HW25.00 - 13 days on
7829.99ft: 008TGAS-Check dryer cable (rig air)
7829.99ft: MUD VIS 0.53
7829.99ft: MUD WEIGHT 10.60
7829.99ft: BIT DEPTH CHANGED TO 4596.0 FEET
7829.99ft: ZERO ALL PUMPS from SideKick sk-06-03-3103
7829.99ft: ZERO ALL PUMPS from SideKick sk-06-03-3103
7829.99ft: MUD VIS 0.53
7829.99ft: MUD WEIGHT 10.60

08:16 7720
08:25 7730
09:14 7740
09:23 7750
09:32 7760
09:42 7770
09:52 7780
09:59 7790
10:23 7800
10:32 7810
10:44 7820
7830
7840



7829.99ft: ZERO ALL PUMPS from SideKick sk-06-03-3103
7829.99ft: ZERO ALL PUMPS from SideKick sk-06-03-3103
7829.99ft: BIT DEPTH CHANGED TO 6018.9 FEET
7829.99ft: MUD VIS 0.51
7829.99ft: MUD WEIGHT 10.60
7829.99ft: ZERO ALL PUMPS from SideKick sk-06-03-3103
7829.99ft: ZERO ALL PUMPS from SideKick sk-06-03-3103
7829.99ft: BIT DEPTH CHANGED TO 7028.0 FEET
7829.99ft: MUD VIS 0.51
7829.99ft: 008TGAS-Check dryer cable (rig air)
7829.99ft: BIT DEPTH CHANGED TO 7827.1 FEET
7829.99ft: ZERO ALL PUMPS from SideKick sk-06-03-3103
7829.99ft: ZERO ALL PUMPS from SideKick sk-06-03-3103
7829.99ft: TRANSFERRED 0.00
7829.99ft: TRANSFERRED 0.00
7829.99ft: TRANSFERRED 50.00
7829.99ft: TRANSFERRED 0.65
7829.99ft: ATTEMPTED TO ZERO TOTAL STROKES ATTEMPTED TO SET HOLE DEPTH TO 0.00 feet
7830.22ft: PUMP SWEEP
7830.22ft: 100% TIE OFF BB,AB,BW
7830.22ft: PUMPING SLUG
7830.22ft: PUMP OUT CELLAR
7830.22ft: FLOW CHECK PUMP OUT CELLAR
7830.22ft: PUMP OUT CELLAR
7830.22ft: PUMP OUT CELLAR
7830.22ft: FLOW CHECK PUMP OUT CELLAR
7830.22ft: FLOW CHECK
7830.22ft: NO FLOW T.I.H.
7830.22ft: 100% TIE OFF BB,BW,SC
7830.22ft: FLOW CHECK
7830.22ft: PUMP OUT CELLAR
7830.22ft: MUD VIS 57.00
7830.22ft: PUMP OUT CELLAR
7830.22ft: MUD WEIGHT 10.20
7830.22ft: HGAS_005: System Test Performed: No Faults Detected
7830.22ft: HGAS_005: System Test Performed: No Faults Detected
7830.22ft: FLOW CHECK
7830.22ft: PUMP OUT CELLAR
7830.22ft: FLOW CHECK
7830.22ft: PUMP OUT CELLAR
7830.22ft: PUMP OUT CELLAR
7830.22ft: PUMP OUT CELLAR
7830.22ft: FILL PIPE
7830.22ft: PUMP OUT CELLAR
7830.22ft: FILL PIPE
7830.22ft: PUMP OUT CELLAR
7830.22ft: FILL PIPE
7830.22ft: FILL PIPE
7830.22ft: FILL PIPE
7830.22ft: MUD WEIGHT 10.60
7830.22ft: FILL PIPE
7830.22ft: PUMP OUT CELLAR
7830.22ft: TRANSFERRED 100.00
7830.22ft: TRANSFERRED 0.00
7830.22ft: FLUSH FLOW LINE