

# LEGEND:

- Proposed Location



# ACCESS ROAD MAP: A TOPO

**Quicksilver Resources, Inc.**

**PIRTLAW PARTNERS, LTD. 32-09**

NW1/4 NE1/4  
SECTION 9, T6N R87W, 6TH P.M.  
ROUTT COUNTY, COLORADO

1335.6' FNL 2385.1' FEL

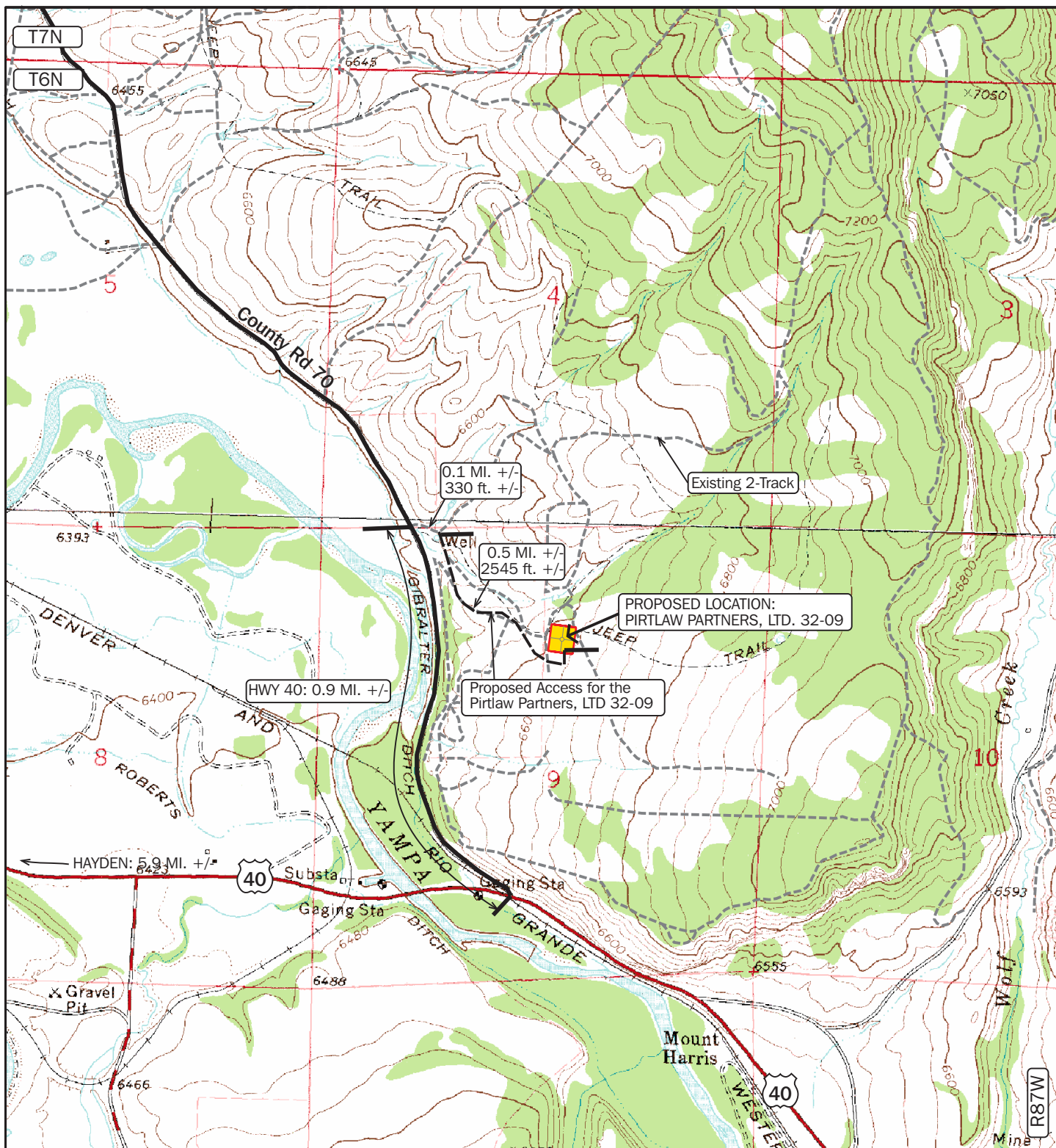
**DOWLING LAND SURVEYORS, LLC**  
P.O. BOX 954

HAYDEN, COLORADO 81639

(970) 276-3613

dowling@plotz.biz

SCALE	DRG	DATE	FILE
		11/08/11	FH11PG12



# LEGEND:

- Existing County Road
- Existing 2-Track
- Proposed Access Road

# ACCESS ROAD MAP: B TOPO



Quicksilver Resources, Inc.

PIRTLAW PARTNERS, LTD. 32-09

NW1/4 NE1/4  
SECTION 9, T6N R87W, 6TH P.M.  
ROUTT COUNTY, COLORADO

1335.6' FNL 2385.1' FEL

DOWLING LAND SURVEYORS, LLC

P.O. BOX 954  
HAYDEN, COLORADO 81639  
(970) 276-3613  
dowling@plotz.biz

SCALE	DRG	DATE	FILE
		11/08/11	FH11PG13