

PHOTO: REFERENCE POINT

CAMERA LOOKING: NORTH

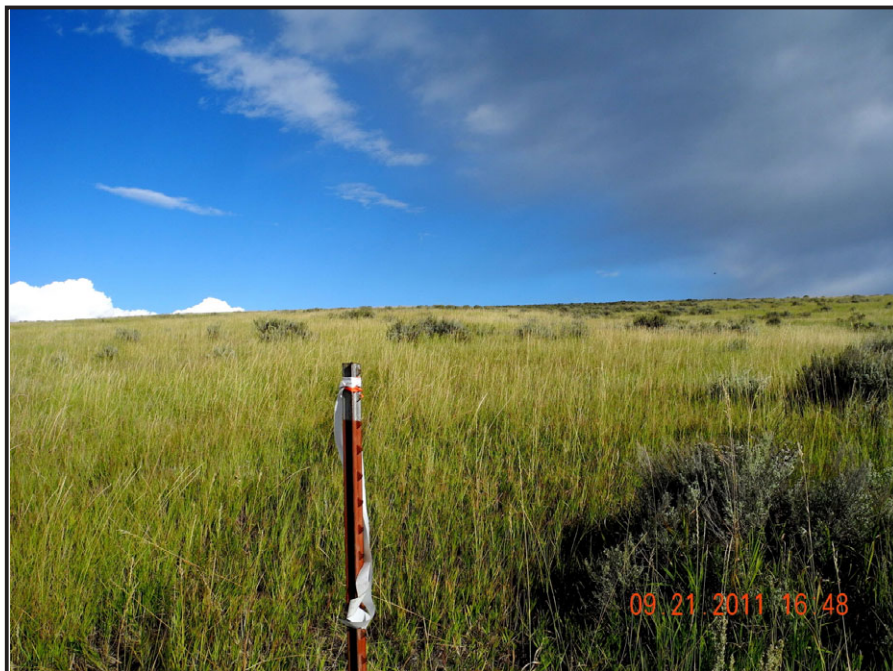


PHOTO: REFERENCE POINT

CAMERA LOOKING: EAST

LEGEND:

REFERENCE POINT PHOTOS :PHOTO REF1

Quicksilver Resources, Inc.

PIRTLAW PARTNERS, LTD. 32-09

**W1/2 NE1/4
SECTION 9, T6N R87W, 6TH P.M.
ROUTT COUNTY, COLORADO**

1335.6' FNL 2385.1' FEL

DOWLING LAND SURVEYORS,LLC
P.O. BOX 954
HAYDEN, COLORADO 81639
(970) 276-3613
dowling@plotz.biz

SCALE	DRG	DATE	FILE
		11/08/11	FH11refph



PHOTO: REFERENCE POINT

CAMERA LOOKING: SOUTH



PHOTO: REFERENCE POINT

CAMERA LOOKING: WEST

LEGEND:

REFERENCE POINT PHOTOS :PHOTO REF1

Quicksilver Resources, Inc.

PIRTLAW PARTNERS, LTD. 32-09

W1/2 NE1/4
SECTION 9, T6N R87W, 6TH P.M.
ROUTT COUNTY, COLORADO

1335.6' FNL 2385.1' FEL

DOWLING LAND SURVEYORS, LLC
P.O. BOX 954
HAYDEN, COLORADO 81639
(970) 276-3613
dowling@plotz.biz

SCALE	DRG	DATE	FILE
		11/08/11	FH11refph